

Multi-Band SMD ANTENNA

- RFPCA350500NNTB003
- For Multi-Band Working Frequency

FEATURES

- Light weight and low profile : 35.0 X 5.0 X 3.0 mm³

APPLICATIONS


- Multi-Band RF Applications
- Wireless, HomeRF, Medical, Automotive

ELECTRICAL CHARACTERISTICS

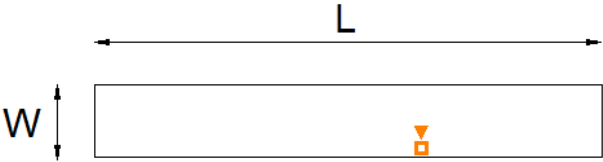

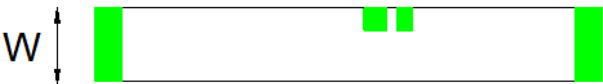
Item	Specification
Working Frequency Range	698 ~ 960 MHz / 1710 ~ 2690 MHz
Gain	2.17 dBi / 3.63 dBi
VSWR	3.0 max.
Polarization	Linear
Feed Impedance	50Ω
Operating Temperature	-40 ~ +85 °C

*Note 1. Central Frequency should be defined after customers' application approval.

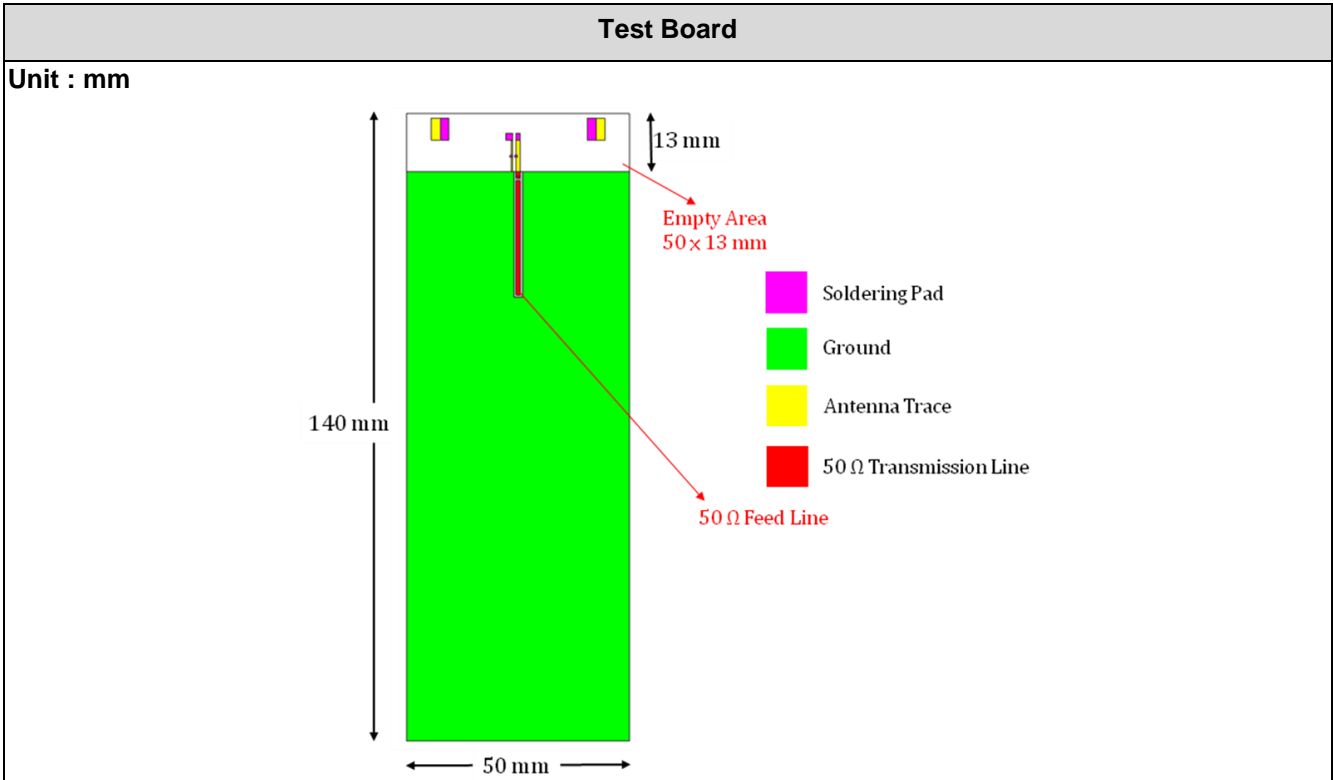
CONSTRUCTION

Figure	PIN	Connection
 <p>BOTTOM View</p>	1	Feeding
	2	Soldering Pad
	3	Soldering Pad
	4	Soldering Pad

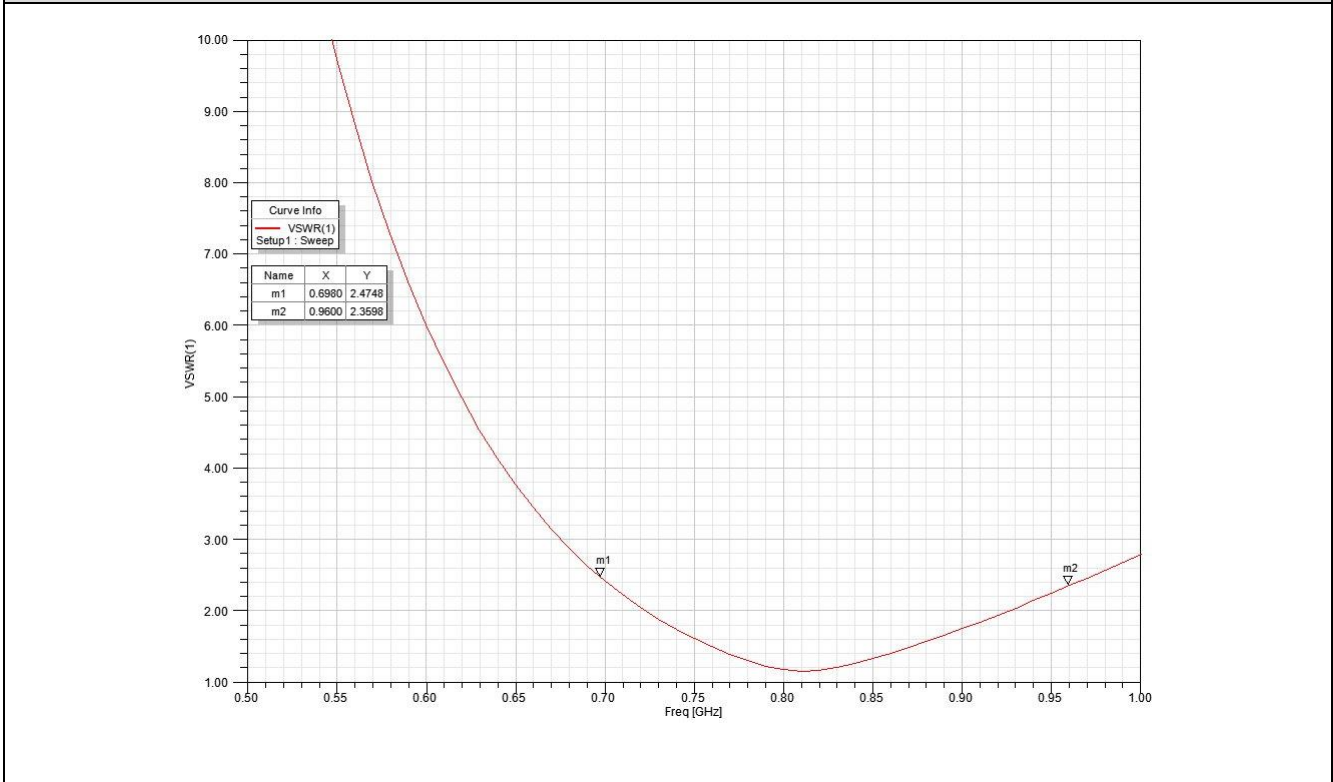
DIMENSION

Figure	Symbol	Dimension (mm)
 <p>TOP View</p>	L	35.0 ± 0.20
 <p>SIDE View</p>	W	5.0 ± 0.20
 <p>BOTTOM View</p>	T	3.0 ± 0.20

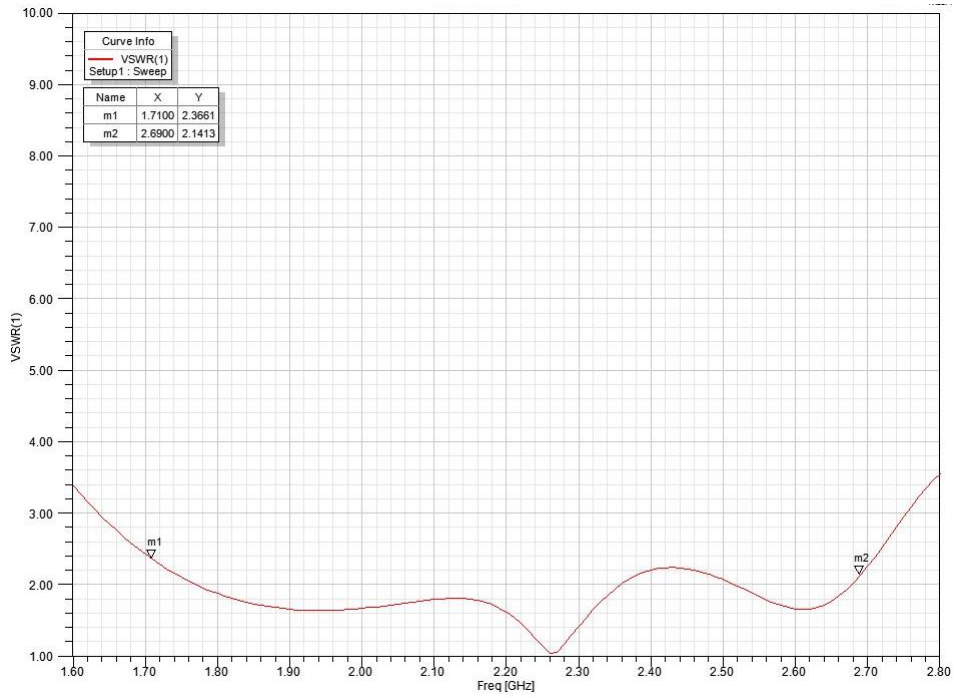
TEST BOARD



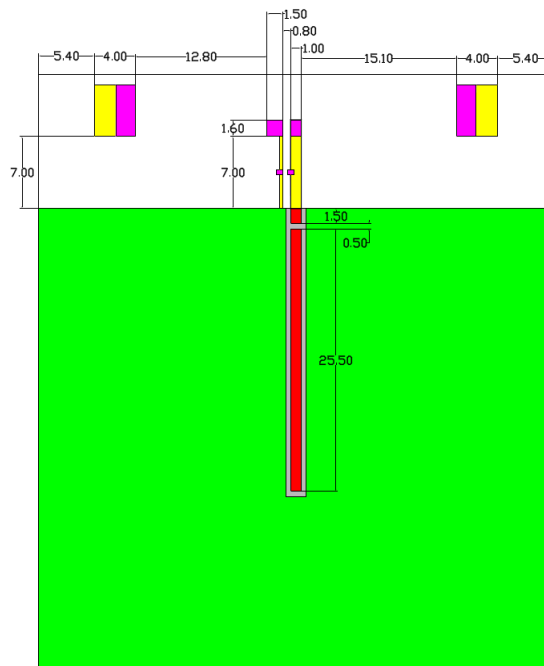
Antenna VSWR on Test Board



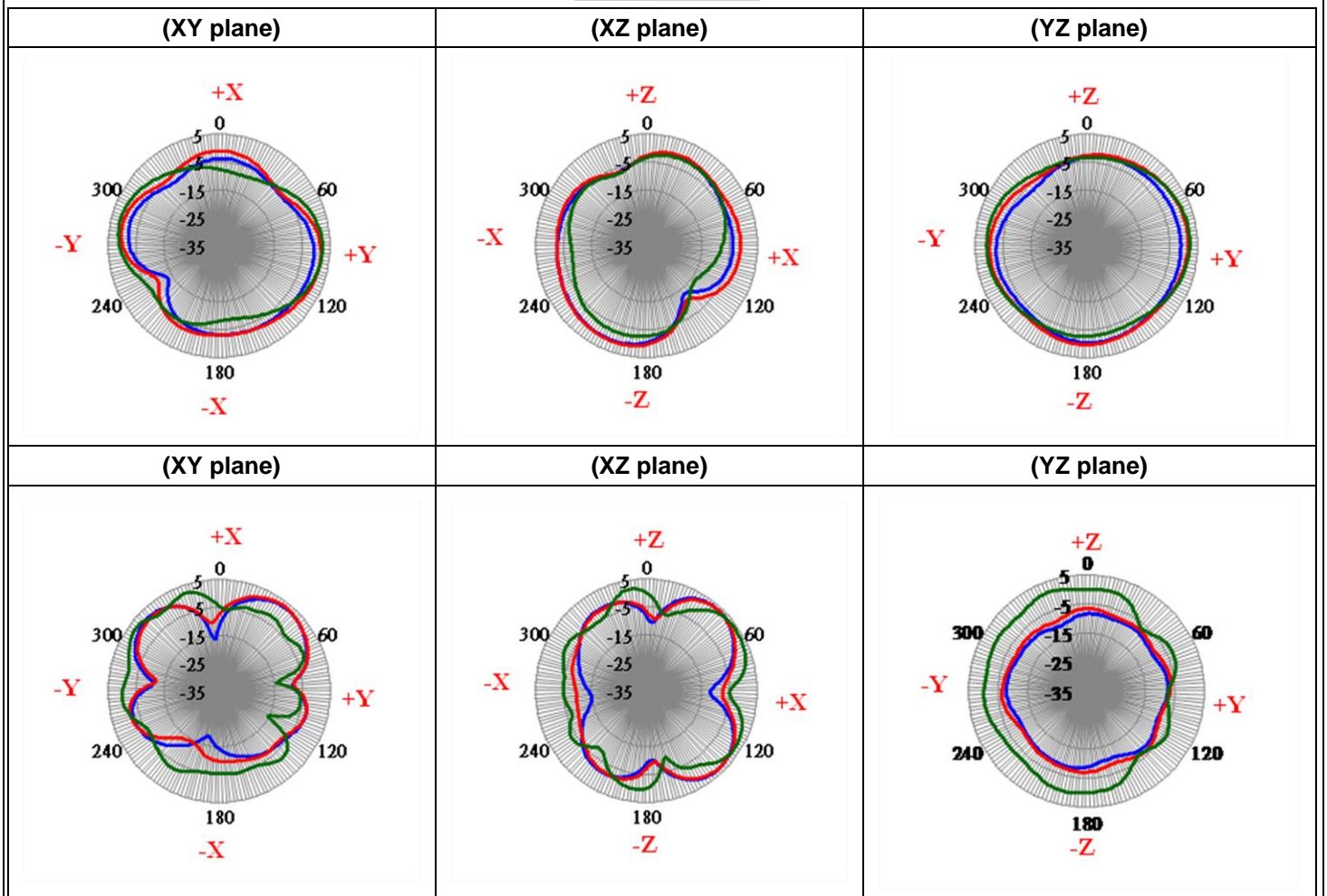
Antenna VSWR on Test Board



SOLDER LAND PATTERN DESIGN



RADIATION PATTERN



CONTACT INFORMATION

For more information, please contact with
Walsin Technology Corporation.

Tel : 886-3-475-8711

Fax : 886-3-475-5197

E mail : info@passivecomponent.com

Web Site : http://www.passivecomponent.com

Specification subject to change without prior notice