

User Manual

+ Setting up your new BixinKey device as a personal wallet

0. Before start

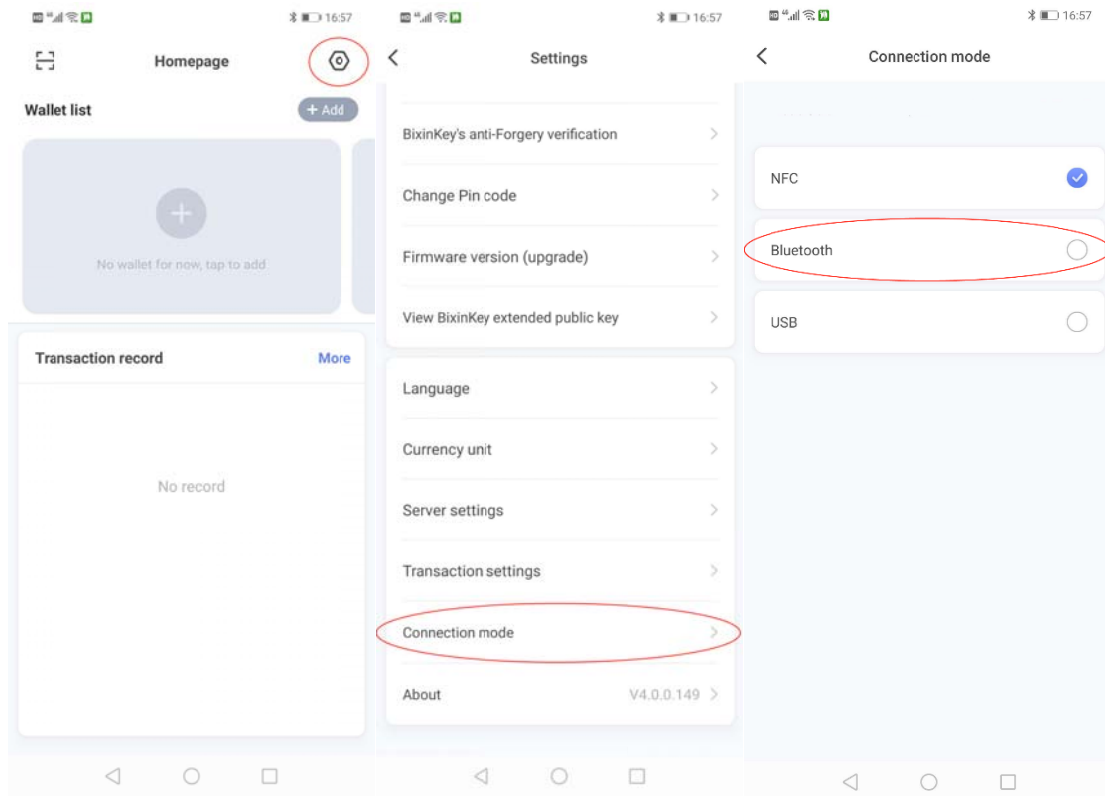
Mobile devices need support for NFC/Bluetooth. PC devices, visit <https://key.bixin.com> to get the client.



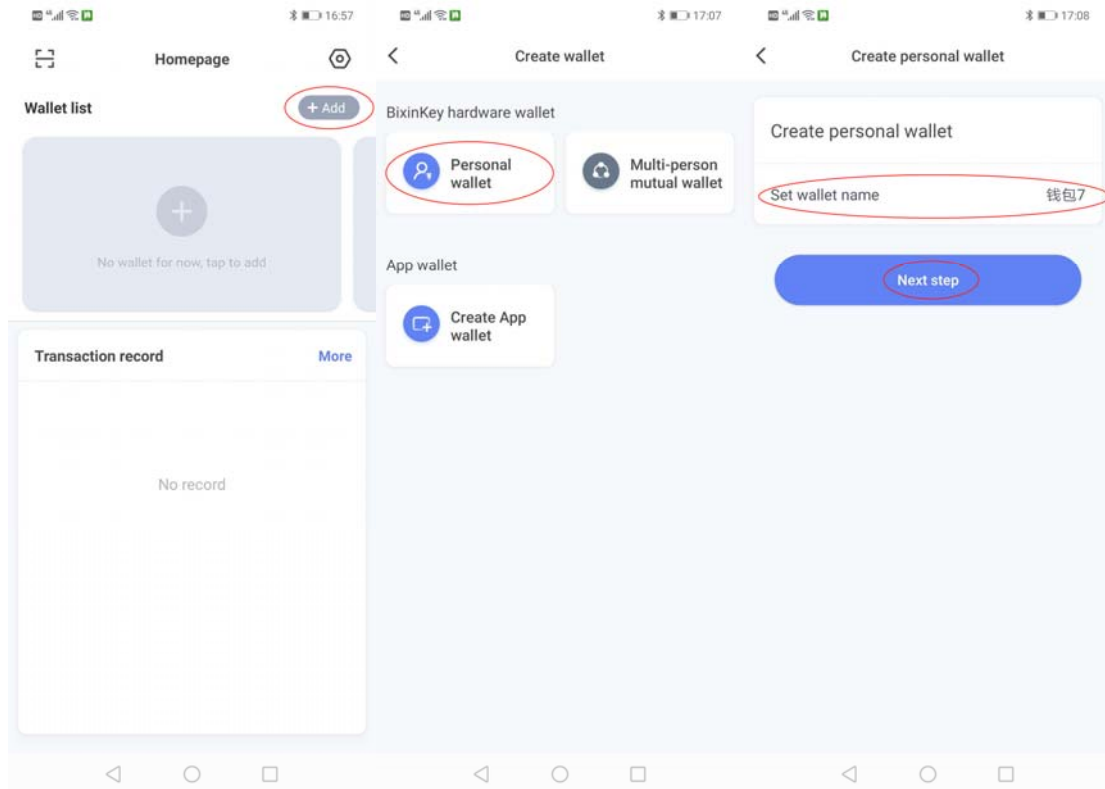
1. Scan QR code and launch Bixin application in an Android or iOS phone.



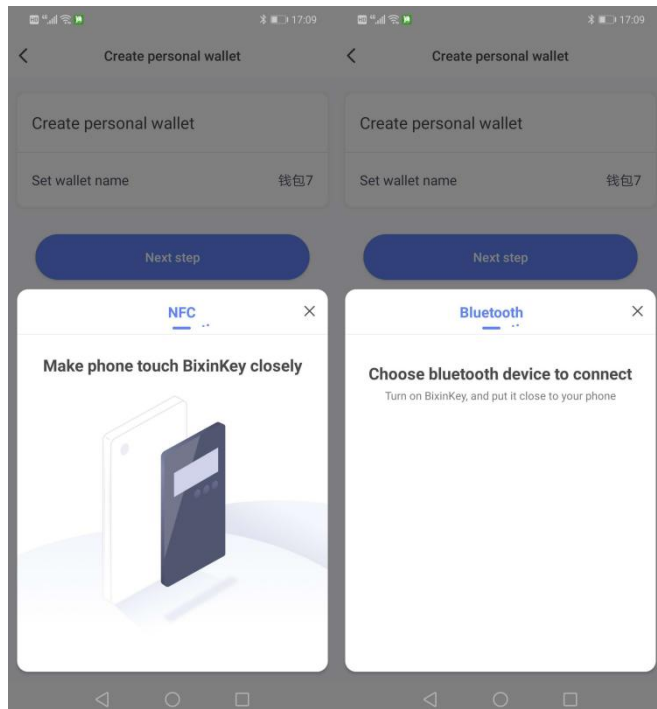
2. Make sure which of the following communications you would like to use: NFC (default), Bluetooth or USB. If you choose the Bluetooth connection, click the gear icon in the upper right corner of the application. Then click “Connection mode” and select “Bluetooth”.



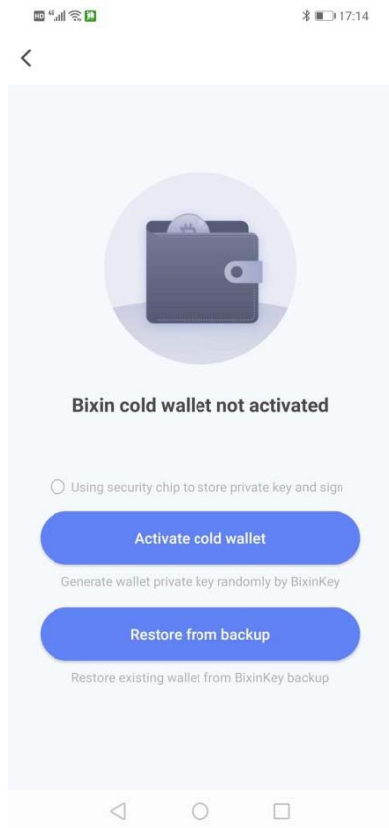
3. Click “Add” in the upper right corner of the application. Select “Personal wallet”, enter a wallet name or leave it as defaulted name, then click “Next step”.



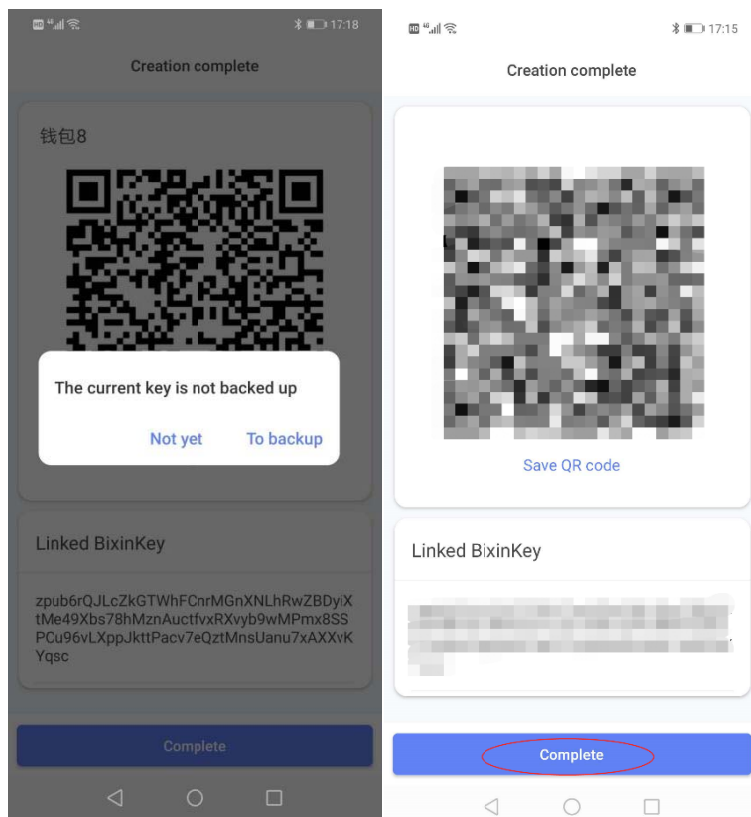
4. Put your BixinKey device near your phone or touch the back of your phone. Pair your device through bluetooth.



5. Select “Activate cold wallet”. You can choose whether to use the security chip to store private key or not.



6. Back up your BixinKey device now or skip it. Click “Complete” to finish creating process.



+ Other operations on BixinKey device



4. How to charge your device

Use an USB cable to connect your BixinKey to a PC or a mobile phone charger.



FCC Statement:

Any Changes or modifications not expressly approved by the party responsible for compliance could void the user's authority to operate the equipment.

This device complies with part 15 of the FCC Rules. Operation is subject to the following two conditions:

- (1) This device may not cause harmful interference, and
- (2) This device must accept any interference received, including interference that may cause undesired operation.

RF warning for Portable device:

The device has been evaluated to meet general RF exposure requirement. The device can be used in portable exposure condition without restriction.