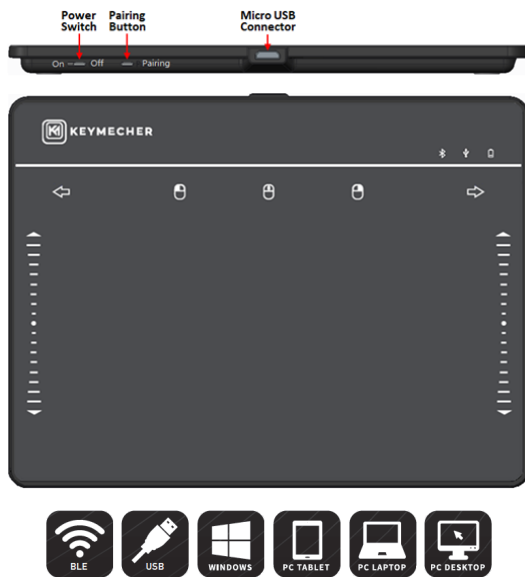


MANO – 720 UB

Model: PL-620UB

Windows Precision Touchpad User Manual



Designed for Windows 10 and 7

Note:

1. The Bluetooth-L.E interface is only support to Windows 10 and 11.
2. This touchpad is programmed with Windows Precision Touchpad Protocol to support touchpad features to Windows 10 and 11.
3. **Warning! Please don't install extra Bluetooth driver to Windows 10 and 11.**
4. Please charge device's battery completely before using the first time.

- Page 1 -

Introductions

MANO-720 UB provides Bluetooth and USB interfaces for wireless and wired connection to Windows 7, 10 and 11; it supports the Windows precision touchpad protocol to meet the specifications of Windows touchpad, it also integrates mouse button and scroll functions for user can manipulate touchpad and mouse features simultaneously in all applications.

Features

- . Compatible with Microsoft Windows Precision Touchpad Protocol.
- . Support Bluetooth and USB interfaces.
- . Bluetooth connection distance can up to 10 meters or above.
- . Ergonomics designed housing to reduces wrist joint injuries effectively .
- . Integrates mouse and touchpad features together.
- . Light indicators to display status of mouse button and device connection.
- . Built-in rechargeable lithium-ion battery can recharge than 300 time.

Specifications

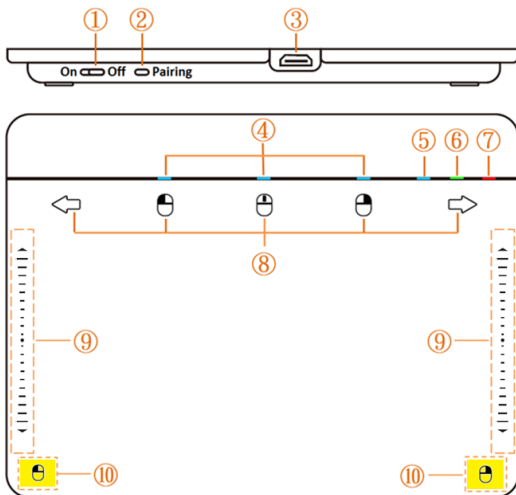
- . Support Microsoft Windows 10,11's Precision Touchpad Protocol
- . Dimensions: 162.5mm x 123.0mm x 6.1~ 9.3mm
- . Touch-Area: 7.0 Inch (Diagonal Length Dimensions)
- . Interfaces: Bluetooth BLE V5.0 and USB V2.0
- . Power Consumption: 20mA^{±10%} @Bluetooth, 30mA^{±10%} @USB
- . System Support: Windows 7, 10 and 11
- . Weight: 122 gm.

Note:

The first time you use this touchpad, it is recommended for you to go to the Windows 10, 11 touchpad settings page to learn the default gesture functions and instructions. In this settings page, you can change the cursor speed and the scroll speed to match your operating habits. About others feature settings please refer to the touchpad settings page in Windows 10/11. Please refer to page 5 and 6.

- Page 2 -

Operations

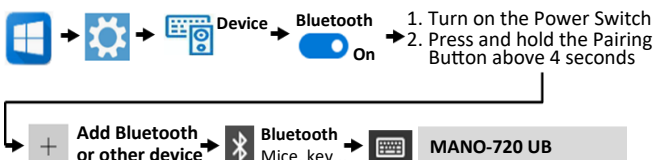


① Power Switch

Turn power switch to off, touchpad can use USB to connect to a host. Turn power switch to on, touchpad can use Bluetooth to connect to a Windows 10/11 host.

② Pairing Button

Follow below steps to pair Bluetooth to a Windows 10/11 host:



- Page 3 -

③ Micro-USB Plug:

- . Used for USB cable to connect to a Windows host.
- . Used for input USB power to charge device's battery.

④ Mouse Button Indicator

Light is on when a mouse button below is in pressed.

⑤ Bluetooth Indicator

- . Blue light is on when touchpad is connected to a host via Bluetooth.
- . Blue light is flash when touchpad is waiting for Bluetooth pairing.

⑥ USB Indicator

Green light is on when touchpad is connected to a host via USB

⑦ Battery Status Indicator

- . Red light is flash when touchpad's battery power is in low.
- . Green light is on when touchpad's battery is in charging.

⑧ Mouse Button Shortcut

Mouse Button shortcut can operated only by 1-finger tap.

Tap a shortcut to make its button to pressed, re-tap it to release.

⑨ Edge Scroll

Put a finger on Edge Scroll, then sliding up/down to operate roll function.

⑩ Mouse Button Zone

The low-corner 2 zones are used for mouse left and right buttons function.

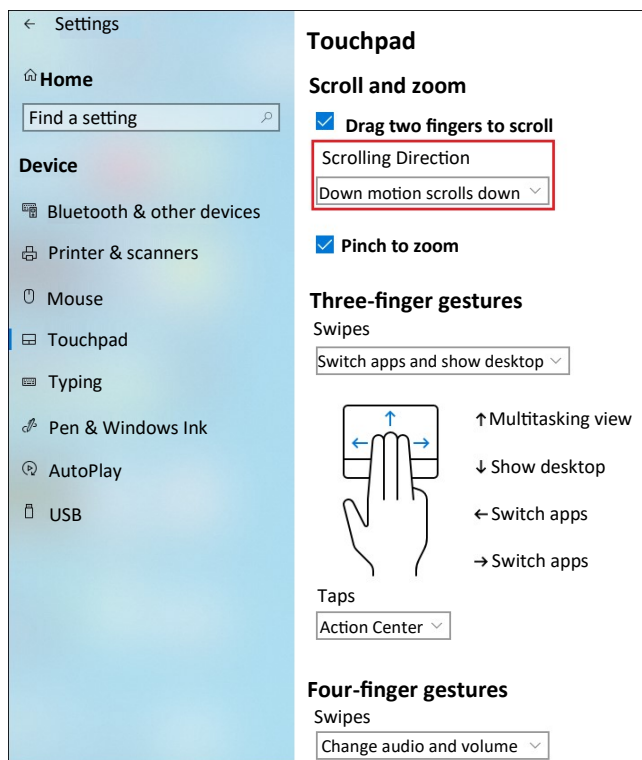
Note:

- . Shortcut function is disabled when gesture or cursor moving is operating.
- . Tap or gesture operation will make all of mouse button to release.
- . Press pairing button above 4 seconds can do the Bluetooth pairing operation.
- . After idle for 15 seconds, all of pressed mouse button will to release.
- . In Bluetooth connection, touchpad will into sleep mode after idle for 15 minutes.
- . Sliding a finger on touch-area a few seconds can wake touchpad up.

- Page 4 -

Windows 10 Touchpad Settings

Follow below steps can go to the touchpad setting page, and can redefine gesture function for your favorites.



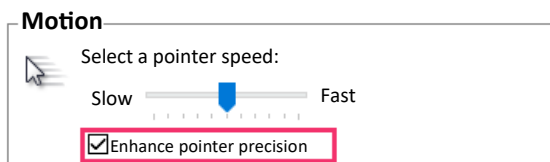
- Page 5 -

Windows 10 Touchpad Settings

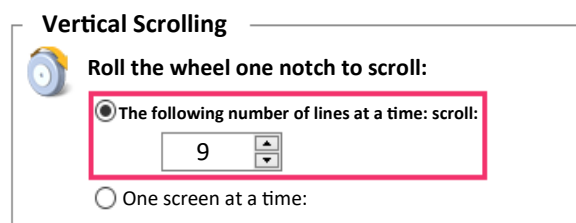
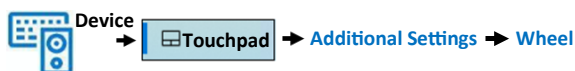
Change the cursor speed



Enhance pointer precision settings

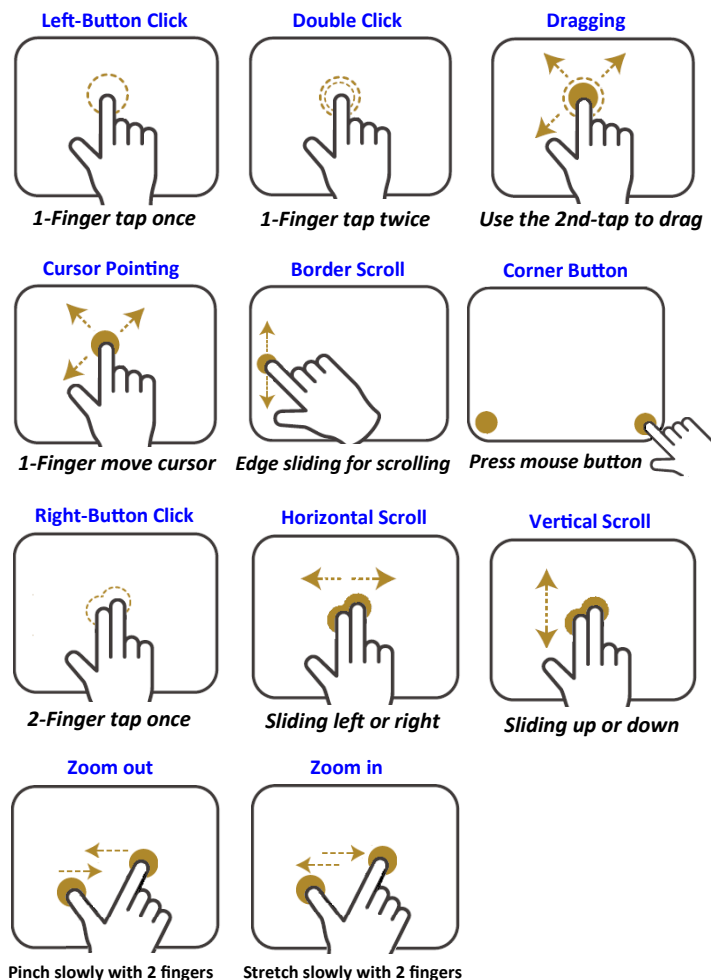


Speed up Border Scroll speed

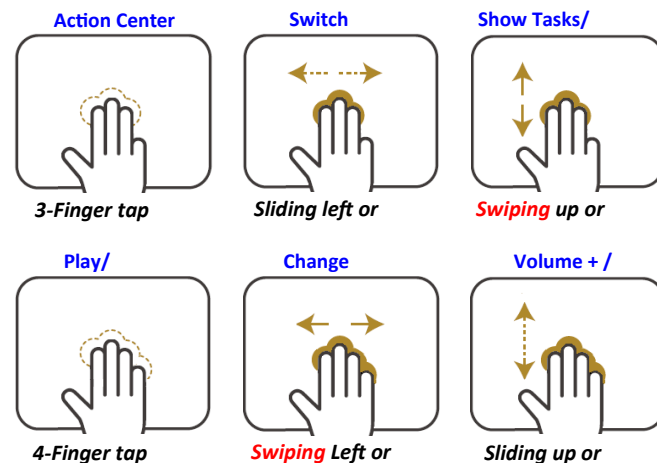


- Page 6 -

Gesture Function



- Page 7 -



Federal Communication Commission Interference Statement

This equipment has been tested and found to comply with the limits for a Class B digital device, pursuant to Part 15 of the FCC Rules. These limits are designed to provide reasonable protection against harmful interference in a residential installation.

This equipment generates uses and can radiate radio frequency energy and, if not installed and used in accordance with the instructions, may cause harmful interference to radio communications. However, there is no guarantee that interference will not occur in a particular installation. If this equipment does cause harmful interference to radio or television reception, which can be determined by turning the equipment off and on, the user is encouraged to try to correct the interference by one of the following measures:

- Reorient or relocate the receiving antenna.
- Increase the separation between the equipment and receiver.
- Connect the equipment into an outlet on a circuit different from that to which the receiver is connected.
- Consult the dealer or an experienced radio/TV technician for help.

FCC Caution: To assure continued compliance, any changes or modifications not expressly approved by the party responsible for compliance could void the user's authority to operate this equipment. (Example - use only shielded interface cables when connecting to computer or peripheral devices).

FCC Radiation Exposure Statement

This equipment complies with FCC RF radiation exposure limits set forth for an uncontrolled environment. This equipment should be installed and operated with a minimum distance of 0.5 centimeters between the radiator and your body. This transmitter must not be co-located or operating in conjunction with any other antenna or transmitter.

The antennas used for this transmitter must be installed to provide a separation distance of at least 0.5 cm from all persons and must not be co-located or operating in conjunction with any other antenna or transmitter.

This device complies with Part 15 of the FCC Rules. Operation is subject to the following two conditions:

- (1) This device may not cause harmful interference, and (2) This device must accept any interference received, including interference that may cause undesired operation.

- Page 8 -