

Antenna specification for Approval

Customer Name:	Shenzhen Zhenwei technology co.,LTD
Product Name:	2.4G/5.8G, Small folding antenna
Product Model:	HTX-002
Antenna type:	Small folding antenna

1. Electrical performance of Electrical factor

Frequency range of Frequency rang	2400-2500 MHz/ 5150-5800MHz
Input the impedance of Impedance	50Ω
Resident Bobbi VSWR	≤2
Polarization mode: Polarization	Vertical Vertical
Radiation direction is Radiation	omnidirectional Omni Antenna
Power capacity of Maximun power Input-watts	50W

2. Mechanical properties of the Mechanical perfor mance

2.1 Size: Dimension110±3mm

2.2 Joint Connector SMA-K

2.3 Cover material Radiomen material TPE, ABS

2.4 Cover color Radiomen color black

2.5 Operating temperature is Working temperature-20°C ~ 80°C

2.6 Storage temperature is Storage temperature-40°C ~ 85°C

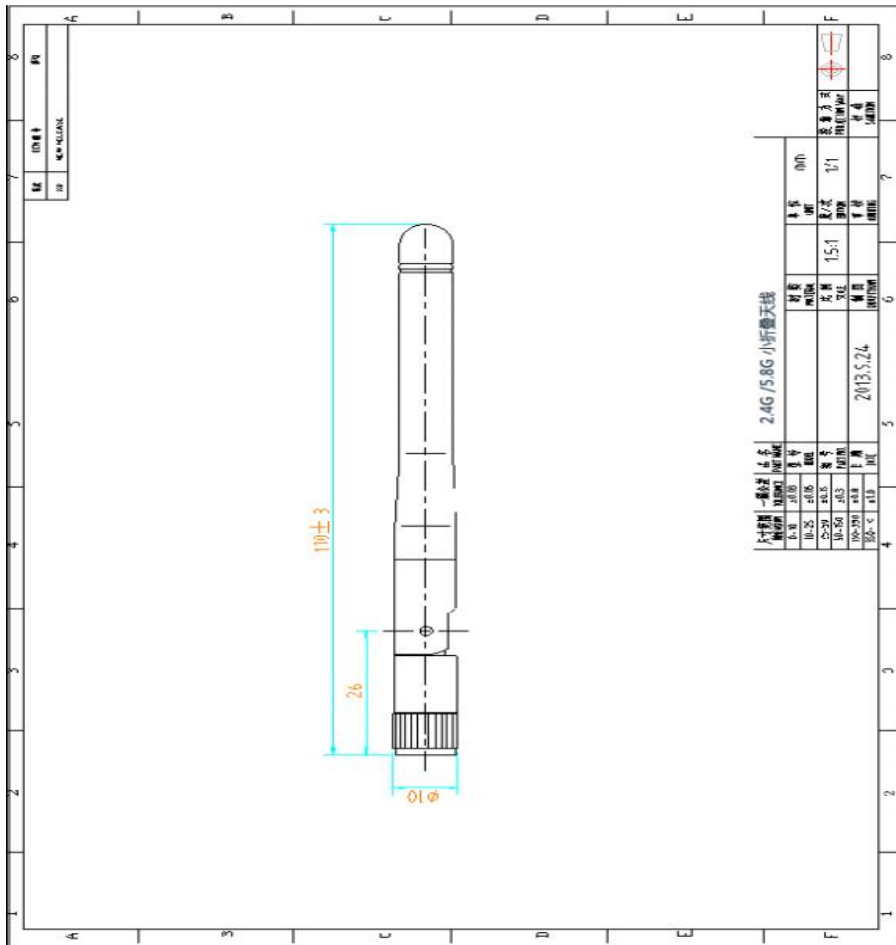
3. General specification

model	HTX-002
produce name	2.4G /5.8G antenna
major chipset	none
standards	IEEE802.11ax, IEEE802.11n,

4. Active gain test

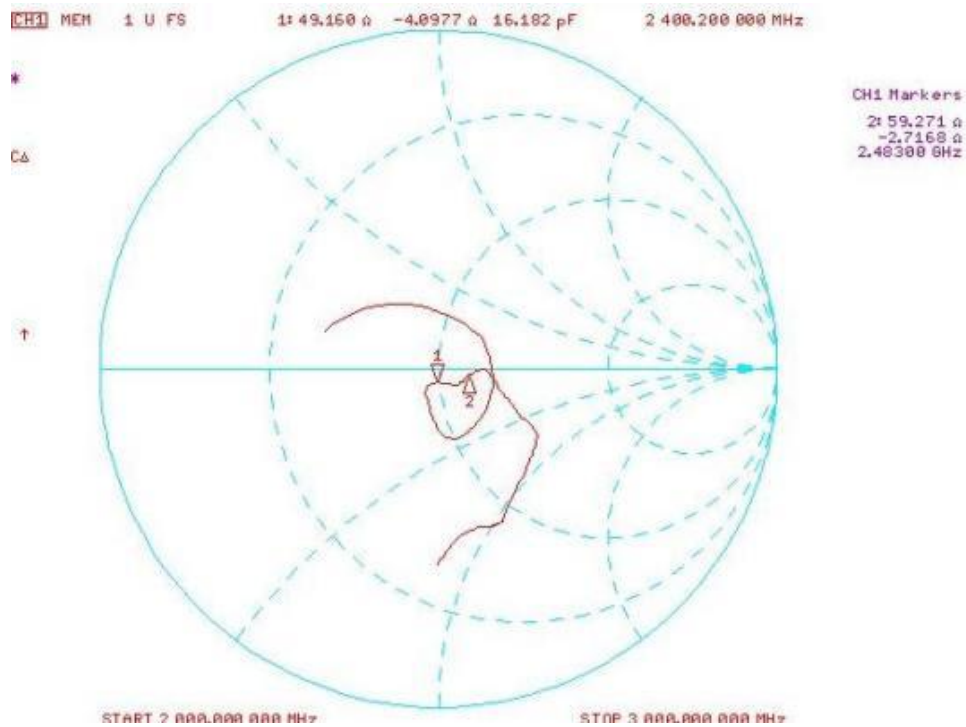
Freq (MHz)	Effi (%)	Effi (dB)	Gain (dBi)	Gain (dBd)	Freq (MHz)	Effi (%)	Effi (dB)	Gain (dBi)	Gain (dBd)
2400	47.06	-3.27	0.57	-1.58	5000	23.32	-6.32	-0.82	-2.97
2405	45.6	-3.41	0.36	-1.79	5050	26.74	-5.73	-0.56	-2.71
2410	49.46	-3.06	0.81	-1.34	5100	28.01	-5.53	-0.24	-2.39
2415	45.94	-3.38	0.44	-1.71	5150	31.95	-4.95	0.34	-1.81
2420	48.96	-3.1	0.76	-1.39	5200	34.45	-4.63	1.06	-1.09
2425	52.72	-2.78	1.07	-1.08	5250	43.87	-3.58	1.45	-0.7
2430	52.54	-2.79	1.05	-1.1	5300	46.46	-3.33	1.73	-0.42
2435	52.67	-2.78	1.01	-1.14	5350	48.73	-3.12	2.24	0.09
2440	54.42	-2.64	1.09	-1.06	5400	48.1	-3.18	2.51	0.36
2445	55.15	-2.58	1.09	-1.06	5450	43.31	-3.63	1.8	-0.35
2450	51.83	-2.85	0.68	-1.47	5500	43.9	-3.58	1.88	-0.27
2455	55.4	-2.56	0.98	-1.17	5550	35.27	-4.53	1.07	-1.08
2460	52.21	-2.82	0.72	-1.43	5600	24.47	-6.11	0.48	-1.67
2465	51.49	-2.88	0.76	-1.39	5650	23.92	-6.21	0.22	-1.93
2470	49.3	-3.07	0.55	-1.6	5700	22.03	-6.57	-0.16	-2.31
2475	53.32	-2.73	0.92	-1.23	5750	20.32	-6.92	-0.92	-3.07
2480	54.14	-2.66	0.98	-1.17	5800	19.69	-7.06	-0.97	-3.12
2485	53.75	-2.7	0.92	-1.23	5850	22.56	-6.47	-0.57	-2.72
2490	59.49	-2.26	1.4	-0.75	5900	19.45	-7.11	-0.47	-2.62
2495	56.31	-2.49	1.23	-0.92					
2500	55.03	-2.59	1.15	-1					

5. Drawing, Drawings

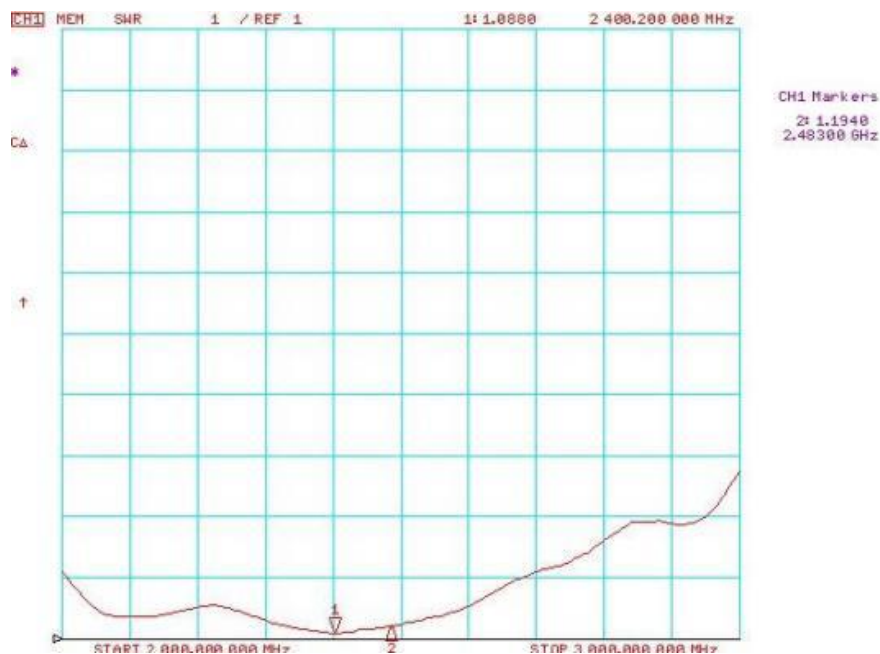


6. performance testing

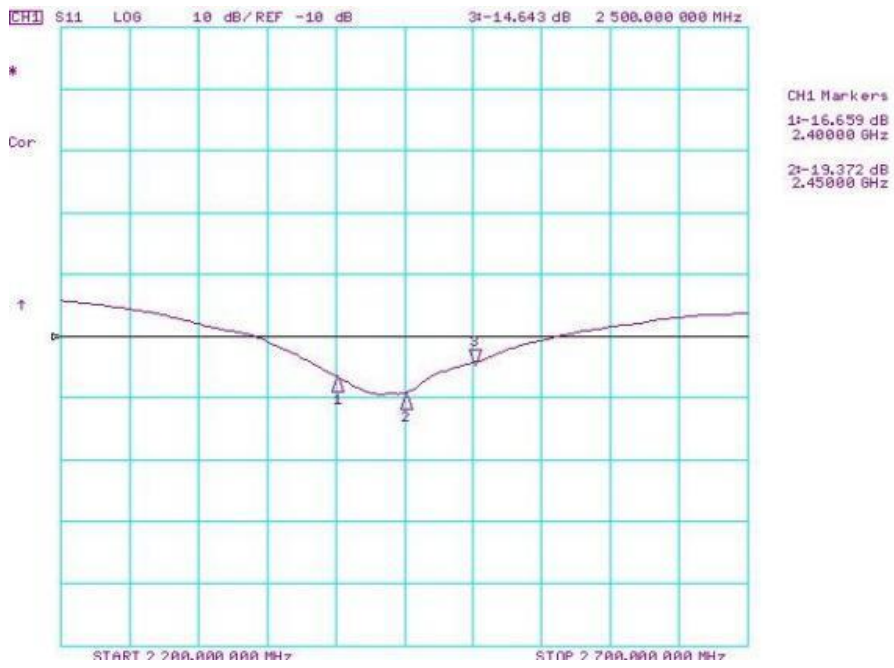
6.1 Impedance diagram of SMITH



6.2 Resident graph VSWR



6.3 Loss diagram RETURN LOSS



7. 3D PATTERN

