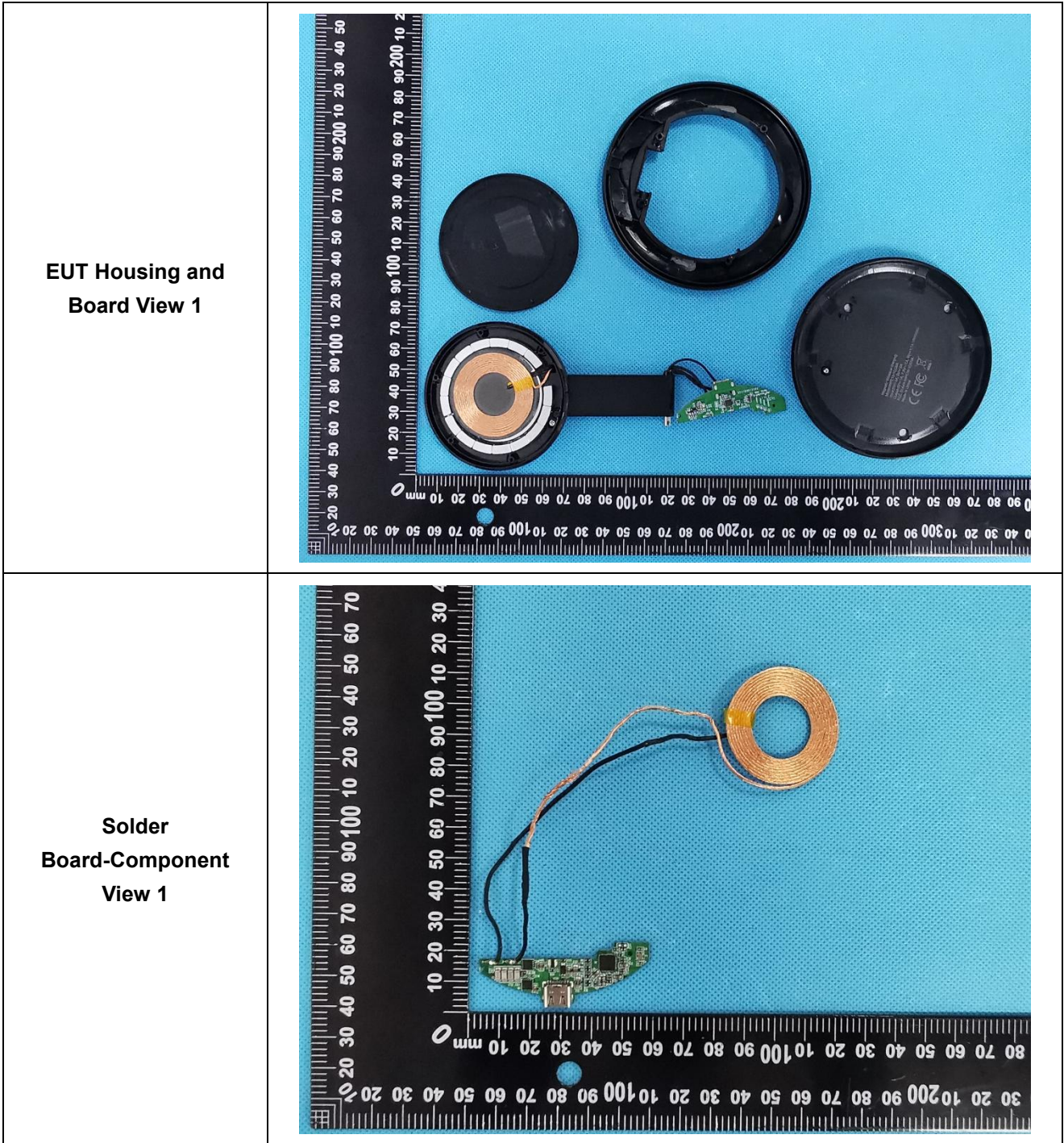
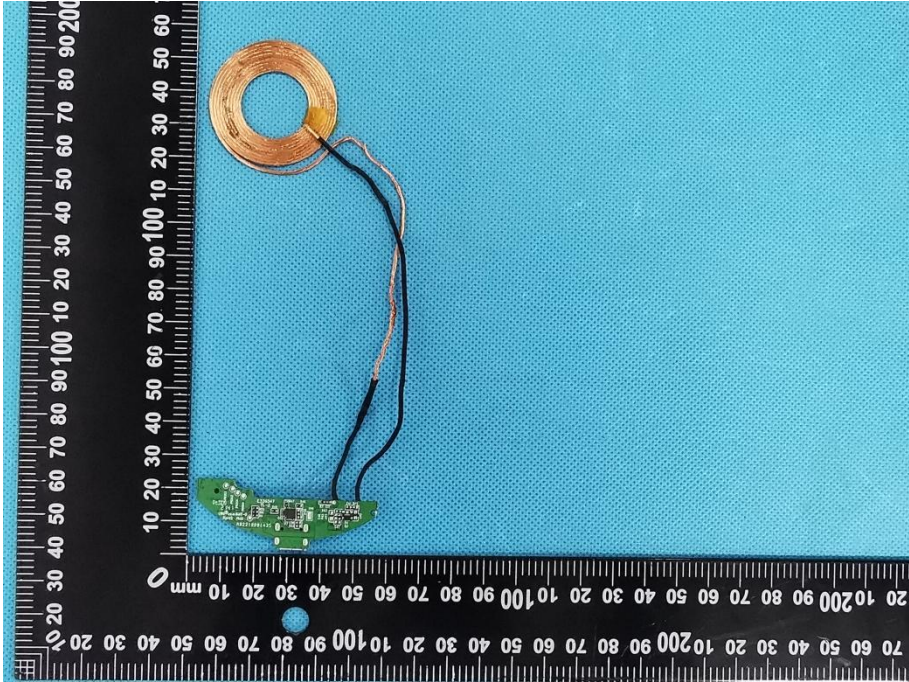
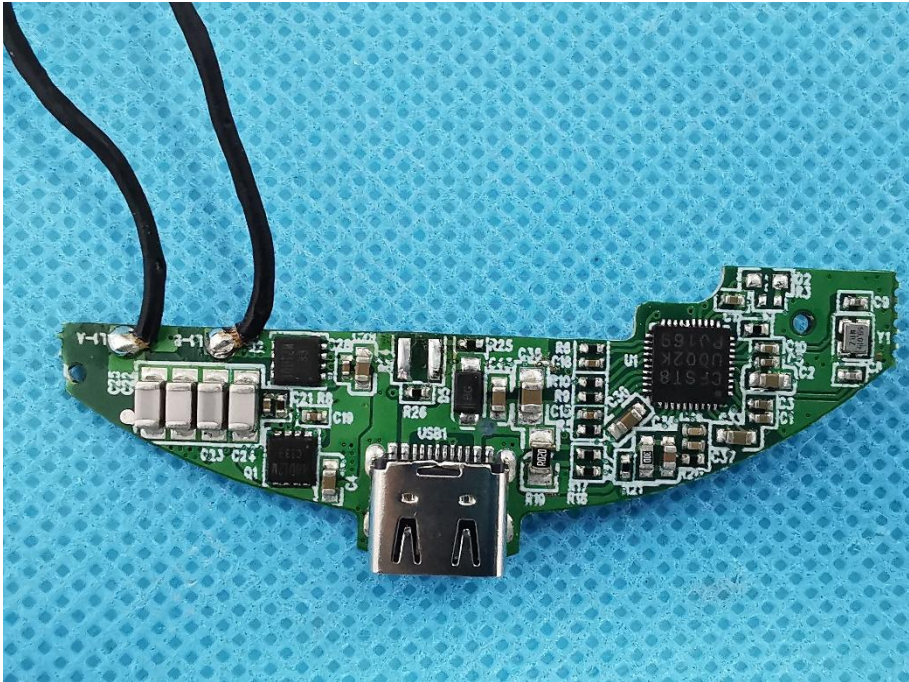
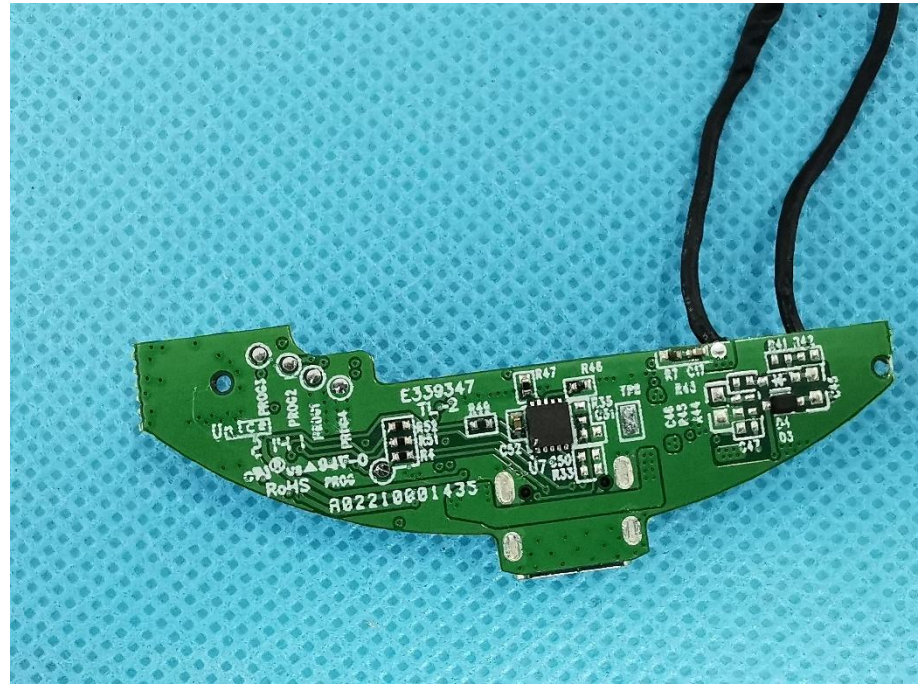


EXHIBIT 3 - EUT INTERNAL PHOTOGRAPHS



<p>Solder Board-Component View 2</p>	 <p>A photograph of a green solder board component with a circular copper antenna. The component is placed on a blue textured surface. A black ruler with white markings is positioned vertically to the left and horizontally below the component for scale. The ruler shows measurements in millimeters and centimeters.</p>
<p>Solder Board-Component View 3</p>	 <p>A close-up photograph of the green solder board component. The board is populated with various electronic components, including a large black integrated circuit (IC) labeled 'U1', several resistors (R1-R25), capacitors (C1-C10), and other smaller components. A USB connector is visible at the bottom of the board. Two black wires are soldered to the top of the board.</p>

Solder
Board-Component
View 4



Antenna View

