

蓝牙天线规格书

BT Antenna Product Approval

Shenzhen Geekbuy E-commerce Co., LTD.
Warehouse 101H, No. 49 Wuhe Avenue, Wuhe Community Bantian Street, Longgang District,
Shenzhen 518129, China

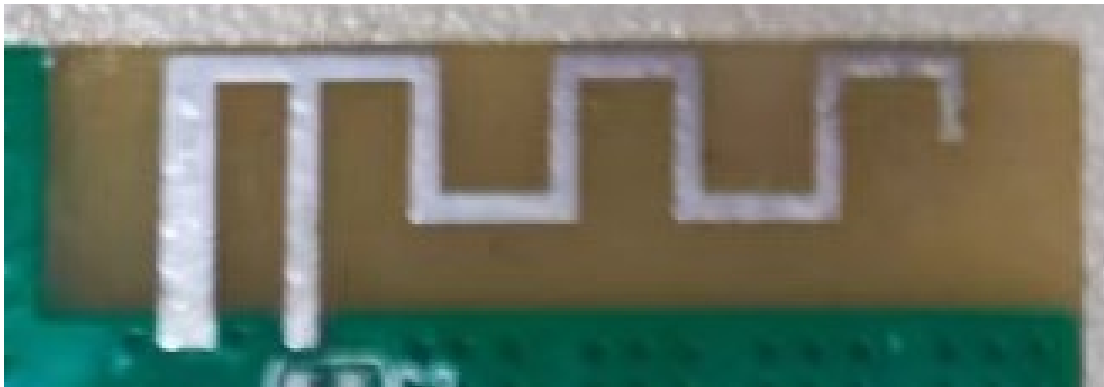
Date: 2023.06.18

一、Antenna Introduction

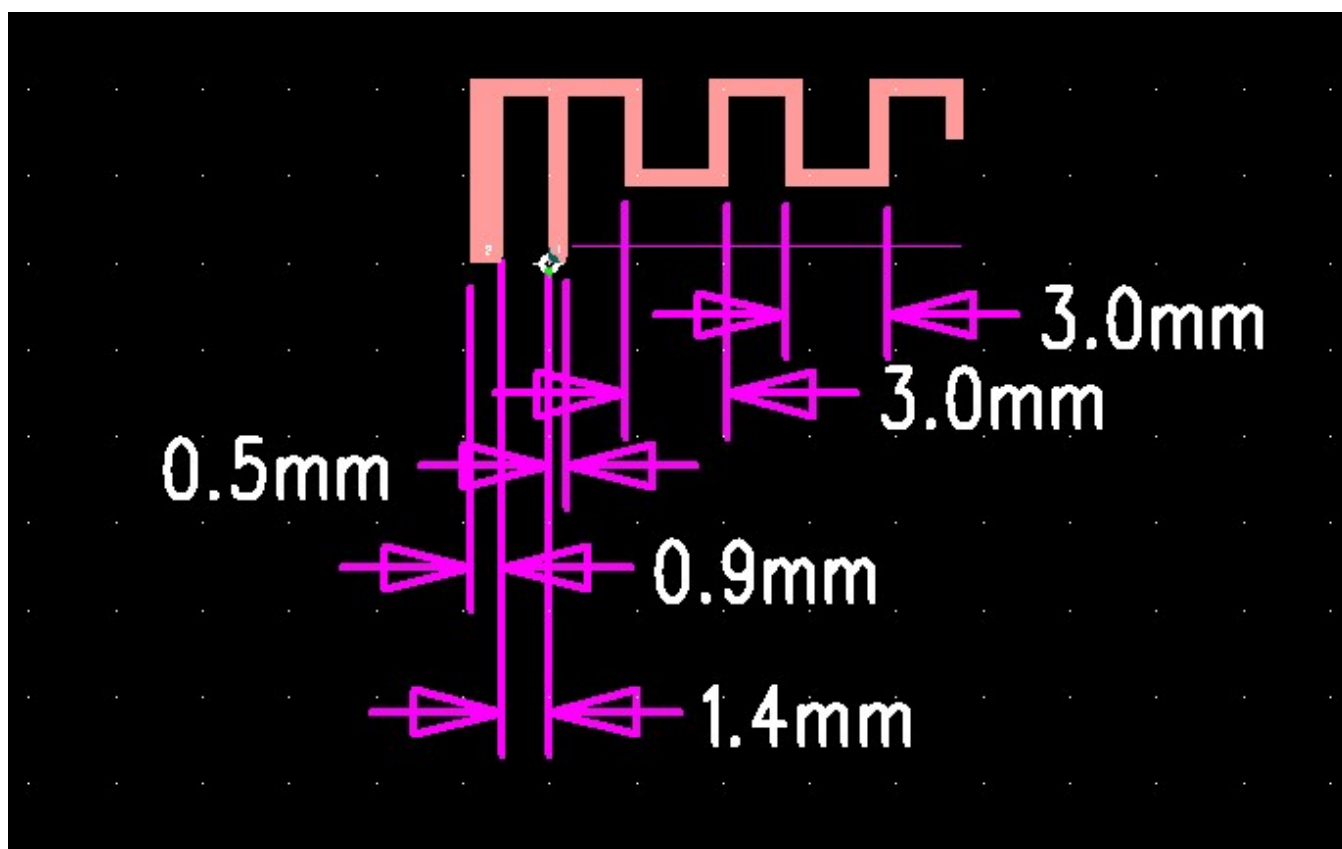
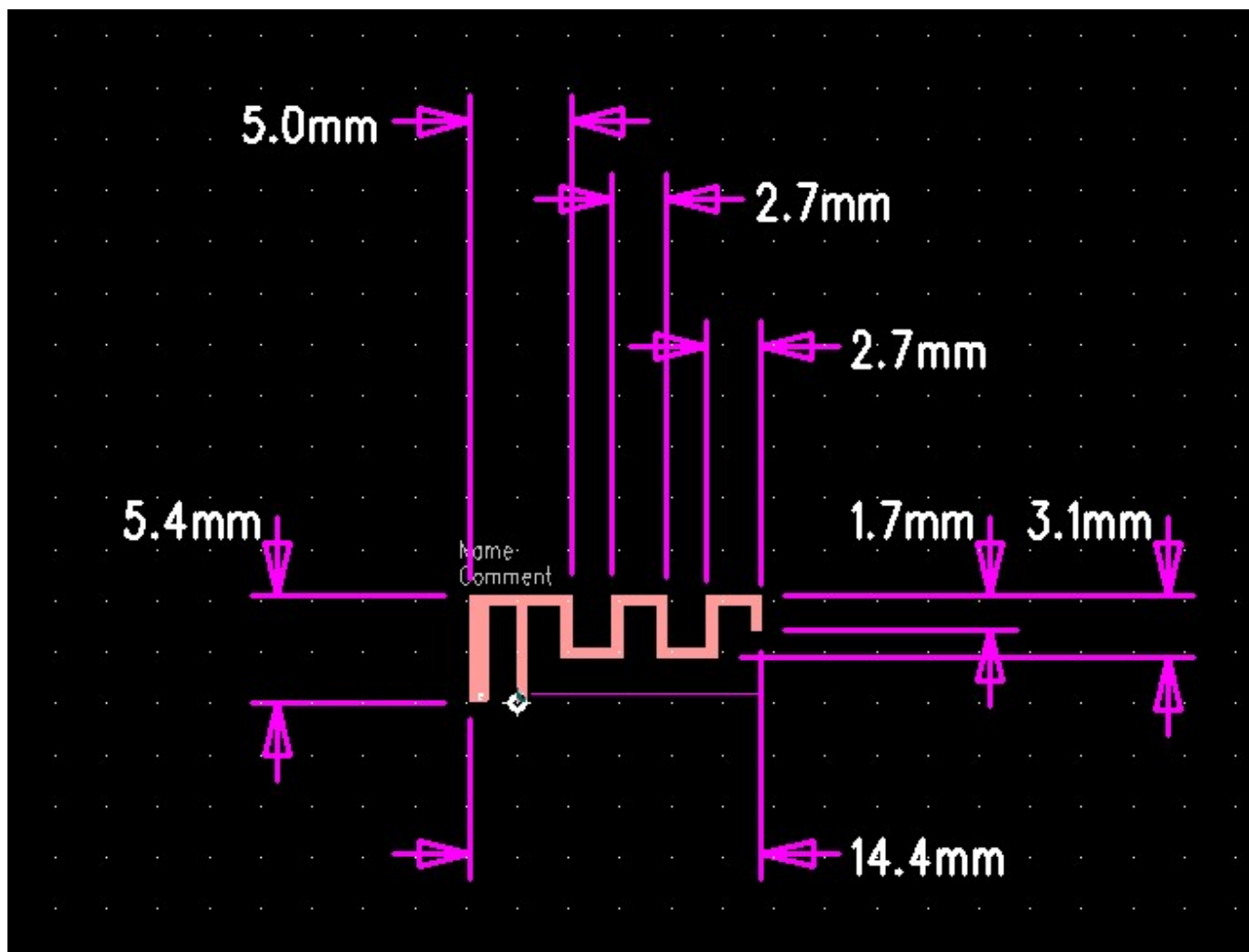
The Bluetooth antenna is directly mounted on a PCB board using copper plating and tin spraying technology. The copper foil thickness is 1OZ, and the board is made of FR-4 material with a thickness of 1.2mm

二、Antenna shape

1、Physical Picture



2、SIZE: 14.4mm * 5.4mm



三、Antenna parameters

The operating frequency of Bluetooth antenna is 2402-2480MHz, which generates resonance in this frequency band.

The following table shows the main parameters of the antenna

PCB ANTENNA	
Frequency (MHz)	2402 ~ 2480 MHz
VSWR	≤ 1.92
Impedance	50 Ohm Nominal
Return Loss	-10 dB Max
Radiation	Omn-directional
Gain (Peak)	-0.347 dBi
Polarization	Linear, Vertical
Admitted Power	2W
Connector	Tin

四、Antenna Test report

Spectrum Detector: PK

Test Date : 2013/6/18

Test By: Andy

Temperature : 28°C

Test Result: PASS

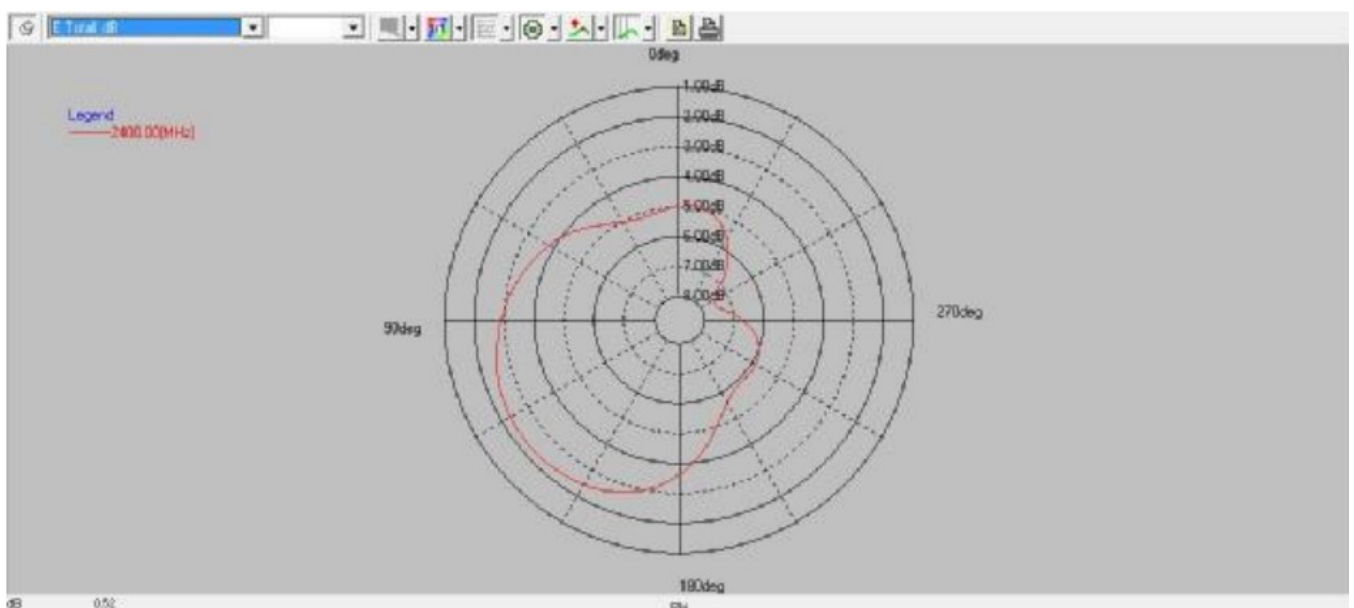
Humidity : 55 %

Modulation: GFSK

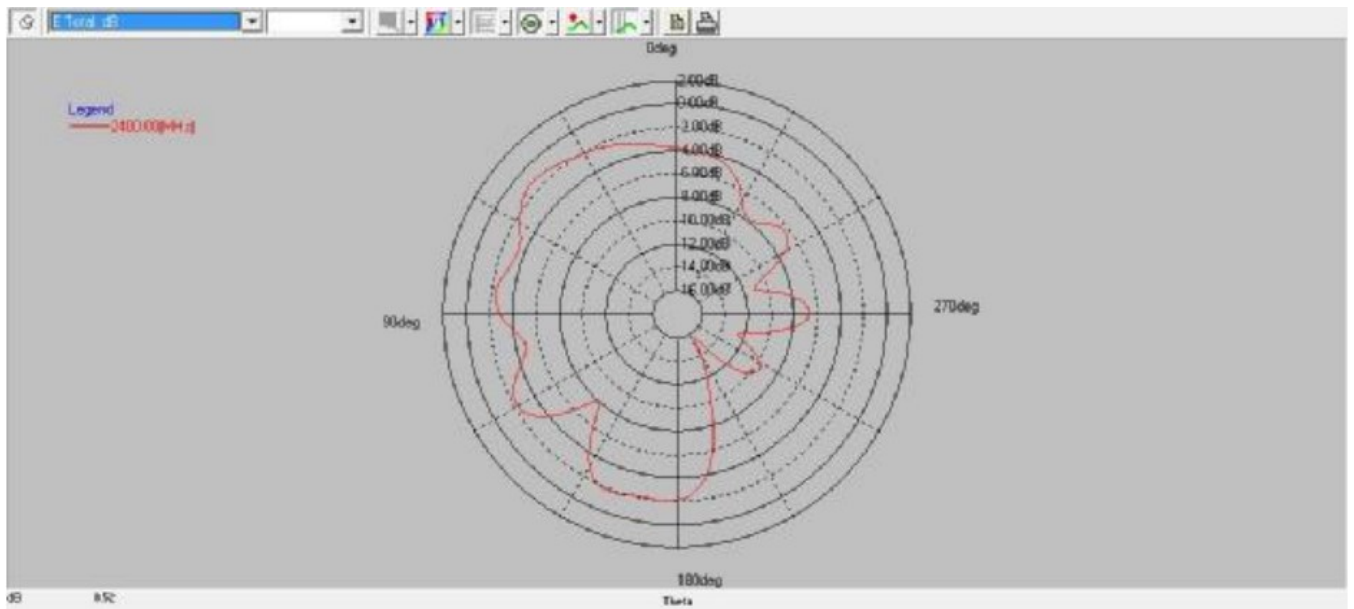
Antenna Gain:

Frequency VNA : (MHz)	E Total. dB(dB)
2400MHz	-0.347483
2410MHz	-0.502625
2420MHz	-0.772879
2430MHz	-0.955555
2440MHz	-1.23072
2450MHz	-1.94066
2460MHz	-1.90725
2470MHz	-2.01968
2480MHz	-2.30721
2490MHz	-2.28333
2500MHz	-2.8728

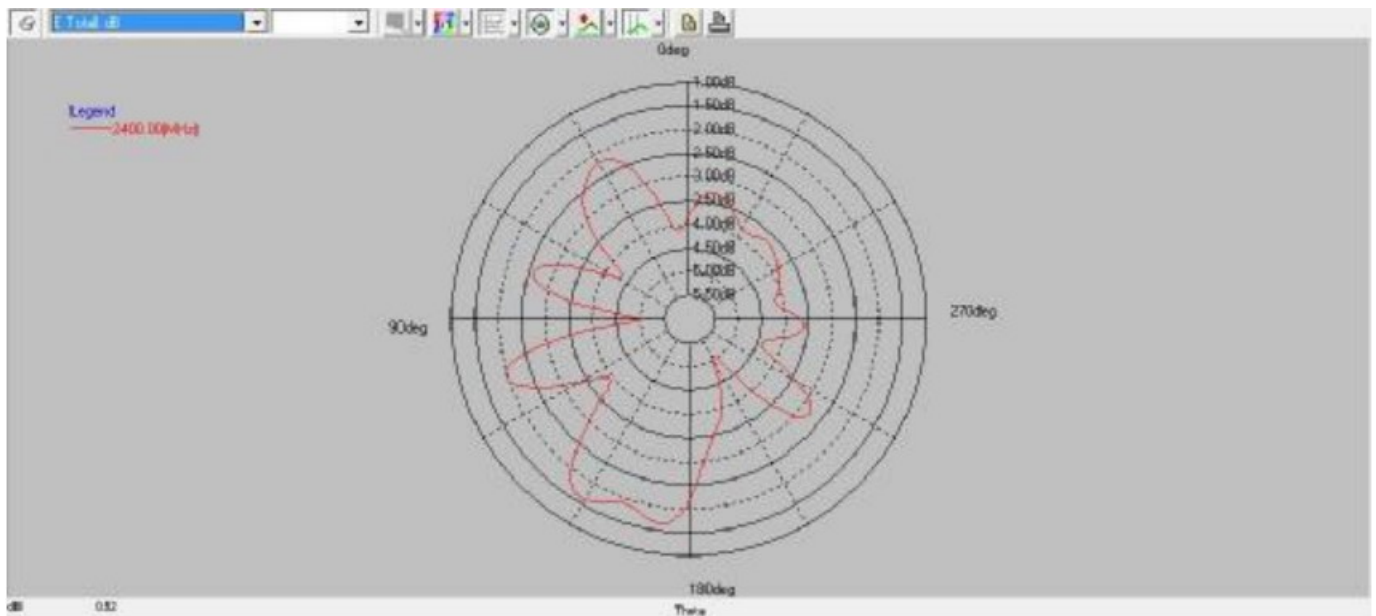
五、2D Plots



PHI 0



PHI 90



THETA 90

六、VSWR:

