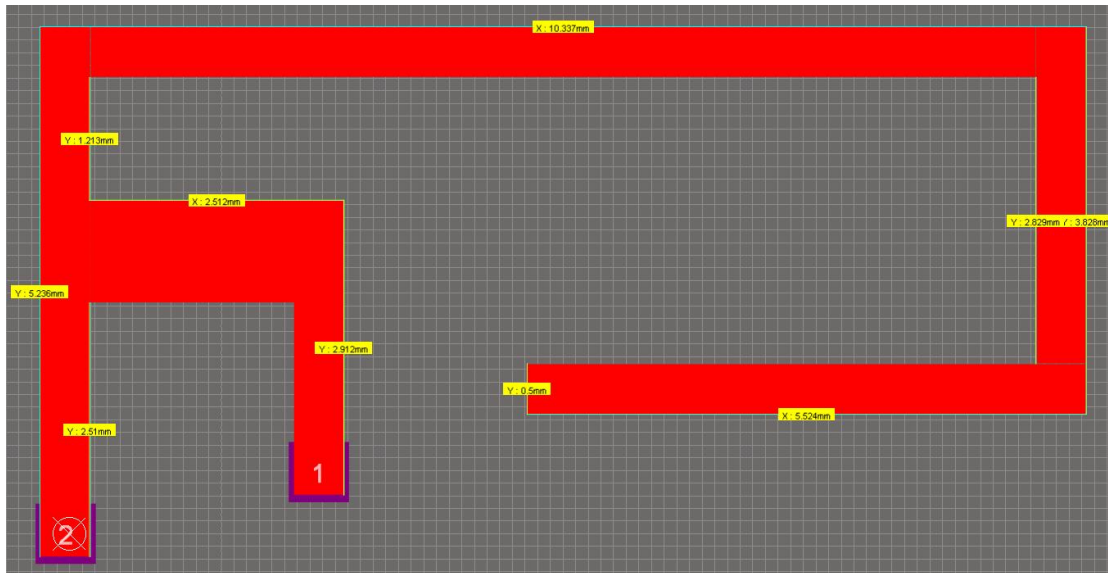


Antenna specification

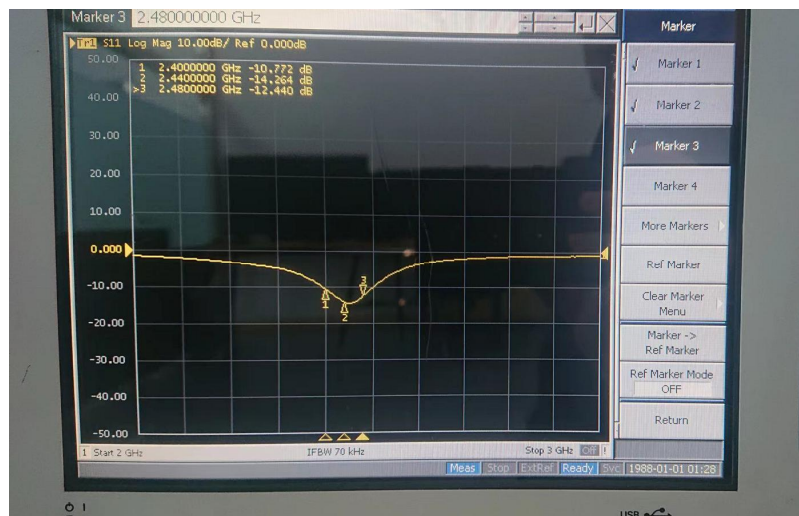
1. Antenna describe

天線形式 Antenna form	Pcb Antenna
頻率範圍 Frequency range	2.4 ~ 2.5Ghz
增益 Gain	1.5dBi
駐波比係數 VSWR	<2. 5
輸入阻抗 Input Impedance	50 ± 5Ω

2. Antenna Layout and Implementation



3. S11



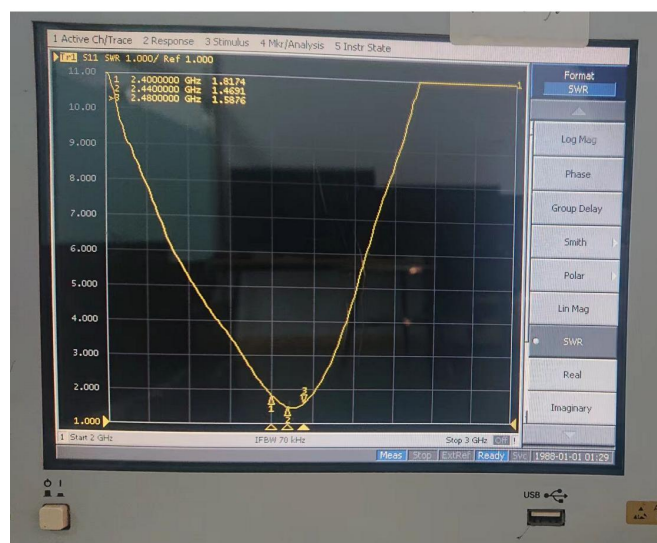
備註：調試後實測結果

Fosc=2.4Ghz, S11=-10.727dB

Fosc=2.44Ghz, S11=-14.264dB

Fosc=2.48Ghz, S11=-12.44dB

4. VSWR

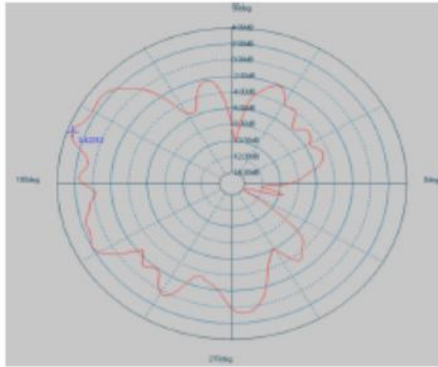


備註：調試後測試結果 VSWR<2.5

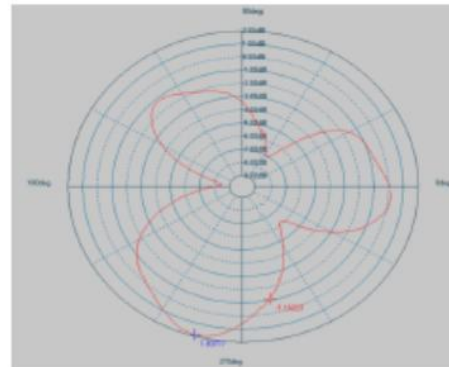
5. Radiation pattern

辐射方向图 Radiation patterns

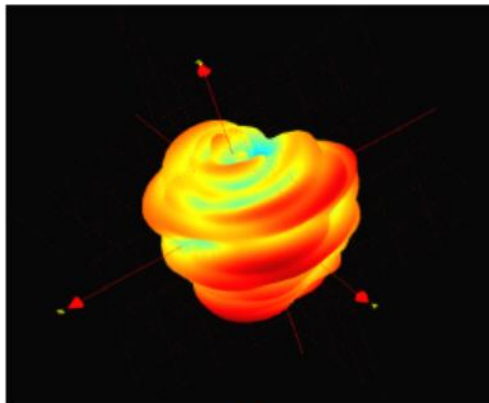
Frequency=2450 MHz



A



B



C

- A. $\Phi = 0^\circ$
- B. $\Theta = 90^\circ$ -3dB beamwidth 67.29deg
- C. 3D Graph

2450 MHz 时天线辐射方向图