

AW12-HP User Manual

Assured Wireless Corporation

16885 W. Bernardo Dr

Suite 300

San Diego CA 92127

USA

858-859-2942

info@assured-wireless.com

Index

1.	About this Manual.....	3
2.	Product Overview.....	3
3.	How to use it	3
	3.1 picture both top and bottom side.....	3
	3.2 power on device	4
4.	Contact information.....	4

1. About this Manual

The content of this User Manual has been made as accurate as possible. However, due to continual product improvements, specifications and other information are subject to change without notice.

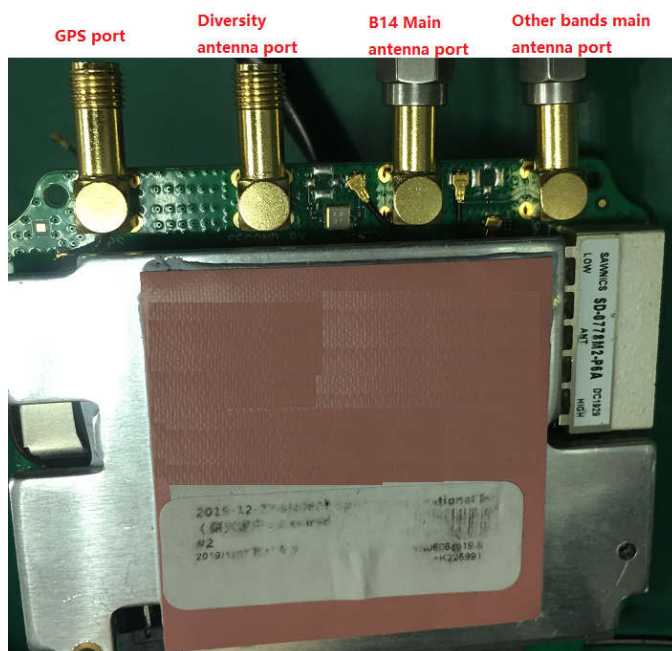
2. Product Overview

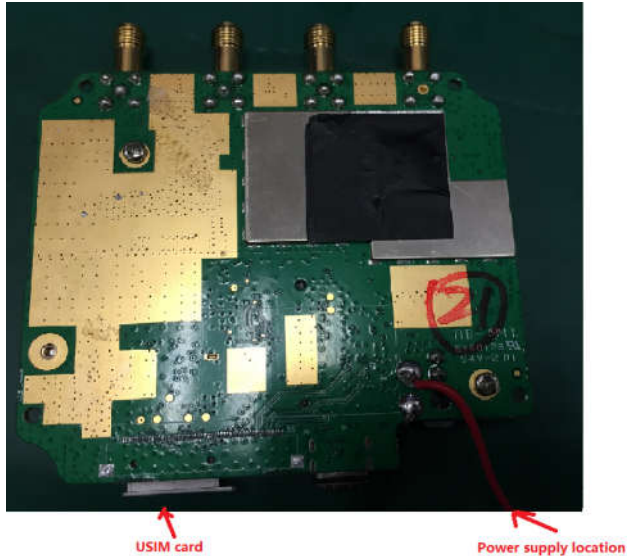
AW12-HP supports B14 power class1 transmit power of 31dBm and supports other AT&T bands in the US market. Main features are the followings

- 1) Cellular bands: AT&T band: B2/B4/B5/B12/B14/B29/B30/B66; WCDMA Band: B2/4/5
- 2) Based on Quectel EM12-AW NGFF module, supports LTE cat12.
- 3) B14 power class1 of 31dBm transmit power, the max TX power in other bands are power class3 of 23dBm.
- 4) RF performance match 3GPP standard.
- 5) Power supply is from 5V to 12V by additional power port.
- 6) Support GPS function.

3. How to use it

3.1 picture both top and bottom side





3.2 power on device

- 1) Insert USIM card
- 2) Connect antennas according above pictures
- 3) Add power, please note that input power voltage range is 5V to 12V, and recommend input power voltage is 12V
- 4) The device will connect internet automatically

4. Contact information

Assured Wireless Corporation

Address: 16885 W. Bernardo Dr., suite 300, San Diego CA 92127 USA

Phone: 858-859-2942

Email: info@assured-wireless.com

Website: <http://www.assured-wireless.com>

Federal Communications Commission (FCC) Statement

15.21

You are cautioned that changes or modifications not expressly approved by the part responsible for compliance could void the user's authority to operate the equipment.

15.105(b)

This equipment has been tested and found to comply with the limits for a Class B digital device, pursuant to part 15 of the FCC rules. These limits are designed to provide reasonable protection against harmful interference in a residential installation. This

AW12-HP User Manual

equipment generates, uses and can radiate radio frequency energy and, if not installed and used in accordance with the instructions, may cause harmful interference to radio communications. However, there is no guarantee that interference will not occur in a particular installation. If this equipment does cause harmful interference to radio or television reception, which can be determined by turning the equipment off and on, the user is encouraged to try to correct the interference by one or more of the following measures:

- Reorient or relocate the receiving antenna.
- Increase the separation between the equipment and receiver.
- Connect the equipment into an outlet on a circuit different from that to which the receiver is connected.
- Consult the dealer or an experienced radio/TV technician for help.

This device complies with Part 15 of the FCC Rules. Operation is subject to the following two conditions:

- 1) this device may not cause harmful interference
- 2) this device must accept any interference received, including interference that may cause undesired operation of the device.

Any changes or modifications not expressly approved by the party responsible for compliance could void the user's authority to operate this equipment. This transmitter must not be co-located or operating in conjunction with any other antenna or transmitter.

FCC RF Radiation Exposure Statement:

To comply with the FCC RF exposure compliance requirements, this device and its antenna must not be co-located or operating in conjunction with any other antenna or transmitter.

This equipment complies with FCC radiation exposure limits set forth for an uncontrolled environment. This equipment should be installed and operated with minimum distance 20 cm between the radiator & your body.

End Product Labeling:

This module is designed to comply with the FCC statement, **FCC ID : 2AUZ8AW12HP**

The host system using this module, should have label in a visible area indicated the following texts:

"Contains **FCC ID: 2AUZ8AW12HP** ".

The FCC ID can be used only when all FCC compliance requirements are met.

Manual Information to the End User

The OEM integrator has to be aware not to provide information to the end user regarding how to install or remove this RF module in the user's manual of the end product which integrates this module.

The end user manual shall include all required regulatory information/warning as shown in

this manual.

Antenna Installation

- 1) The antenna must be installed such that 20 cm is maintained between the antenna and users,
- 2) The transmitter module may not be co-located with any other transmitter or antenna.
- 3) Only antennas of the same type and with equal or less gains as shown below may be used with this module. Other types of antennas and/or higher gain antennas may require additional authorization for operation.

Antenna type	LTE Band2	LTE Band4	LTE Band5	LTE Band12	LTE Band14
External	9.0dBi	6.0dBi	10.0dBi	1.0dBi	1.0dBi

Antenna type	LTE Band30	LTE Band66
External	6.0dBi	6.0dBi

In the event that these conditions cannot be met (for example certain laptop configurations or co-location with another transmitter), then the FCC authorization is no longer considered valid and the FCC ID cannot be used on the final product. In these circumstances, the OEM integrator will be responsible for re-evaluating the end product (including the transmitter) and obtaining a separate FCC authorization.