



TEST REPORT

APPLICANT : Realme Chongqing Mobile
: Telecommunications Corp., Ltd.

PRODUCT NAME : Mobile Phone

MODEL NAME : RMX3941

BRAND NAME : realme

FCC ID : 2AUYFRMX3941

STANDARD(S) : FCC 47 CFR Part 2 (2.1093)
IEEE 1528-2013

RECEIPT DATE : 2024-10-16

TEST DATE : 2024-10-23 to 2024-11-09

ISSUE DATE : 2024-11-11



Edited by: Xie Yiyun
Xie Yiyun (Rapporteur)

Approved by: Gan Yueming
Gan Yueming (Supervisor)

NOTE: This document is issued by Shenzhen Morlab Communications Technology Co., the test report shall not be reproduced except in full without prior written permission of the company. The test results apply only to the particular sample(s) tested and to the specific tests carried out which is available on request for validation and information confirmed at our website.





DIRECTORY

- 1. SAR Results Summary 5
- 2. Technical Information 6
 - 2.1. Applicant and Manufacturer Information 6
 - 2.2. Equipment under Test (EUT) Description 6
 - 2.3. Environment of Test Site/Conditions 8
- 3. Specific Absorption Rate (SAR) 9
 - 3.1. Introduction 9
 - 3.2. SAR Definition 9
- 4. RF Exposure Limits 10
 - 4.1. Uncontrolled Environment 10
 - 4.2. Controlled Environment 10
- 5. Applied Reference Documents 11
- 6. SAR Measurement System 12
 - 6.1. E-Field Probe 13
 - 6.2. Data Acquisition Electronics (DAE) 14
 - 6.3. Robot 14
 - 6.4. Measurement Server 15
 - 6.5. Light Beam Unit 15
 - 6.6. Phantom 15
 - 6.7. Device Holder 16
 - 6.8. Data Storage and Evaluation 17
 - 6.9. Test Equipment List 19
- 7. Tissue Simulating Liquids 21
- 8. SAR System Verification 24
 - 8.1. Purpose of System Performance Check 24
 - 8.2. System Setup 24



8.3. Validation Results 25

9. EUT Testing Position 28

9.1. Handset Reference Points 28

9.2. Positioning for Cheek / Touch 29

9.3. Positioning for Ear / 15° Tilt 29

9.4. SAR Evaluation near the Mouth/Jaw Regions of the Phantom 30

9.5. Body-worn Configurations 30

9.6. Hotspot Mode Exposure Position Conditions 31

10. Measurement Procedures 32

10.1. Spatial Peak SAR Evaluation 32

10.2. Power Reference Measurement 33

10.3. Area Scan Procedures 33

10.4. Zoom Scan Procedures 33

10.5. SAR Averaged Methods 34

10.6. Power Drift Monitoring 34

11. SAR Test Procedure 35

11.1. General Scan Requirements 35

11.2. Test Procedure 36

11.3. Description of Interpolation/Extrapolation Scheme 36

11.4. Wireless Router 36

12. SAR Test Configuration 38

13. Conducted Power List 50

14. Hotspot Mode Evaluation Procedure 50

15. Block Diagram of the Tests to be Performed 52

15.1. Head 52

15.2. Body 53

16. Test Results List 54

16.1. Test Guidance 54



16.2. Head SAR Data 58

16.3. Body SAR Data 67

16.4. Repeated SAR Assessment 75

16.5. Extremity SAR Assessment 77

17. Simultaneous Transmission Evaluation 78

17.1. Simultaneous Transmission Consideration 78

17.2. Simultaneous Transmission Analysis 79

18. Uncertainty Assessment 85

Annex A General Information 86

Annex B Test Setup Photos

Annex C Plots of System Performance Check

Annex D Plots of Maximum SAR Test Results

Annex E Conducted Power

Annex F DASY Calibration Certificate

Changed History		
Version	Date	Reason for Change
1.0	2024-11-11	First edition



1. SAR Results Summary

The maximum results of Specific Absorption Rate (SAR) found during test as bellows:

<Highest Reported SAR Summary>

Frequency Band		Highest SAR Summary			
		Head (Gap 0mm)	Body-worn (Gap 10mm)	Hotspot (Gap 10mm)	Extremity (Gap 0mm)
		1g SAR (W/kg)			10g SAR (W/kg)
GSM	GSM850	0.962	0.328	0.328	N/A
	GSM1900	1.121	0.618	0.972	N/A
WCDMA	WCDMA II	1.038	0.432	0.809	N/A
	WCDMA IV	0.967	0.959	1.117	N/A
	WCDMA V	1.189	0.384	0.384	N/A
LTE	LTE Band 2	0.975	0.501	0.739	N/A
	LTE Band 5	0.883	0.271	0.271	N/A
	LTE Band 7	1.053	0.744	1.041	N/A
	LTE Band 13	0.748	0.232	0.232	N/A
	LTE Band 26	1.070	0.364	0.364	N/A
	LTE Band 38	0.975	0.515	0.729	N/A
	LTE Band 41	0.988	0.528	0.691	N/A
WLAN	2.4GHz WLAN	0.509	0.148	0.148	N/A
	5GHz WLAN	1.153	0.614	1.140	0.754
2.4GHz Band	Bluetooth	N/A	0.021	0.021	N/A

Highest Simultaneous Transmission SAR _{1g} (W/Kg):	1.573	Limit (W/kg): 1.6
---	-------	-------------------

Note:

1. This device is in compliance with Specific Absorption Rate (SAR) for general population or uncontrolled exposure limits (1.6W/kg as averaged over any 1 gram of tissue; specified in FCC 47 CFR Part 1 (1.1310) and IEEE C95.1-1991), and had been tested in accordance with the measurement methods and procedures specified in IEEE 1528-2013 and FCC KDB publications.
2. For FDD-LTE Band 4 is fully covered by FDD-LTE Band 66, therefore only FDD-LTE Band 66 was tested.
3. When the test result is a critical value, we will use the measurement uncertainty give the judgment result based on the 95% confidence intervals.



2. Technical Information

Note: Provide by applicant.

2.1. Applicant and Manufacturer Information

Applicant:	Realme Chongqing Mobile Telecommunications Corp., Ltd.
Applicant Address:	No.178 Yulong Avenue, Yufengshan, Yubei District, Chongqing, China
Manufacturer:	Realme Chongqing Mobile Telecommunications Corp., Ltd.
Manufacturer Address:	No.178 Yulong Avenue, Yufengshan, Yubei District, Chongqing, China

2.2. Equipment under Test (EUT) Description

Product Name:	Mobile Phone
EUT No.:	8#, 11#, 12#
Hardware Version:	11
Software Version:	realme UI 5.0
Frequency Bands:	GSM 850: 824 MHz ~ 849 MHz GSM 1900: 1850 MHz ~ 1910 MHz WCDMA Band II: 1850 MHz ~ 1910 MHz WCDMA Band IV: 1710 MHz ~ 1755 MHz WCDMA Band V: 824 MHz ~ 849 MHz LTE Band 2: 1850 MHz ~ 1910 MHz LTE Band 4: 1710 MHz ~ 1755 MHz LTE Band 5: 824 MHz ~ 849 MHz LTE Band 7: 2500 MHz ~ 2570 MHz LTE Band 13: 777 MHz ~ 787 MHz LTE Band 26: 814 MHz ~ 849 MHz LTE Band 38: 2570 MHz ~ 2620 MHz LTE Band 41: 2535 MHz ~ 2655 MHz LTE Band 66: 1710 MHz ~ 1780 MHz WLAN 2.4GHz: 2412 MHz ~ 2462 MHz WLAN 5.2GHz: 5180 MHz ~ 5240 MHz WLAN 5.3GHz: 5260 MHz ~ 5320 MHz WLAN 5.5GHz: 5500 MHz ~ 5700 MHz WLAN 5.8GHz: 5745 MHz ~ 5825 MHz Bluetooth: 2402 MHz ~ 2480 MHz NFC: 13.56 MHz



Modulation Mode:	GSM/GPRS: GMSK EDGE: 8PSK WCDMA: QPSK, 16QAM LTE: QPSK, 16QAM, 64QAM 802.11b: DSSS 802.11a/g/n-HT20/HT40/ac-VHT20/40/80: OFDM BR+EDR: GFSK (1Mbps), $\pi/4$ -DQPSK (2Mbps), 8-DPSK (3Mbps) Bluetooth LE: GFSK(1Mbps) NFC: ASK	
Multi-slot Class:	GPRS: Multi-slot Class12 EDGE: Multi-slot Class 12	
Operation Class:	Class B	
VoLTE Mode:	Support	
Hotspot Mode:	Support (5G WLAN only for B1 & B4)	
Transmit Type:	WWAN: 2Tx/2Rx WLAN: 1Tx/1Rx	
Antenna Type:	WWAN: Inverted F Antenna WLAN: Inverted F Antenna Bluetooth: Inverted F Antenna NFC: Loop Antenna	
SIM Cards Description:	SIM 1	GSM+WCDMA+LTE
	SIM 2	GSM+WCDMA+LTE

Note: For more detailed description, please refer to specification or user manual supplied by the applicant and/or manufacturer.



2.3. Environment of Test Site/Conditions

Normal Temperature (NT):	20-25 °C
Relative Humidity:	30-75 %

During SAR test, EUT is in Traffic Mode (Channel Allocated) at Normal Voltage Condition. A communication link is set up with a System Simulator (SS) by air link, and a call is established.

The EUT shall use its internal transmitter. The antenna(s), battery and accessories shall be those specified by the Factory. The EUT battery must be fully charged and checked periodically during the test to ascertain uniform power output. If a wireless link is used, the antenna connected to the output of the base station simulator shall be placed at least 50 cm away from the handset.

The signal transmitted by the simulator to the antenna feeding point shall be lower than the output power level of the handset by at least 35 dB.

3. Specific Absorption Rate (SAR)

3.1. Introduction

SAR is related to the rate at which energy is absorbed per unit mass in an object exposed to a radio field. The SAR distribution in a biological body is complicated and is usually carried out by experimental techniques or numerical modeling. The standard recommends limits for two tiers of groups, occupational or controlled and general population or uncontrolled, based on a person's awareness and ability to exercise control over his or her exposure. In general, occupational or controlled exposure limits are Middle than the limits for general population or uncontrolled.

3.2. SAR Definition

The SAR definition is the time derivative (rate) of the incremental energy (dW) absorbed by(dissipated in) an incremental mass (dm) contained in a volume element (dv) of a given density. (ρ). The equation description is as below:

$$\text{SAR} = \frac{d}{dt} \left(\frac{dW}{dm} \right) = \frac{d}{dt} \left(\frac{dW}{\rho dv} \right)$$

SAR is expressed in units of Watts per kilogram (W/kg).

SAR measurement can be either related to the temperature elevation in tissue by,

$$\text{SAR} = C \left(\frac{\delta T}{\delta t} \right)$$

Where C is the specific head capacity, δT is the temperature rise and δt the exposure duration, or related to the electrical field in the tissue by

$$\text{SAR} = \frac{\sigma |E|^2}{\rho}$$

Where σ is the conductivity of the tissue, ρ is the mass density of the tissue and $|E|$ is the rmselectrical field strength.

However for evaluating SAR of low power transmitter, electrical field measurement is typically applied.



4. RF Exposure Limits

4.1. Uncontrolled Environment

Uncontrolled Environments are defined as locations where there is the exposure of individuals who have no knowledge or control of their exposure. The general population/uncontrolled exposure limits are applicable to situations in which the general public may be exposed or in which persons who are exposed as a consequence of their employment may not be made fully aware of the potential for exposure or cannot exercise control over their exposure. Members of the general public would come under this category when exposure is not employment-related; for example, in the case of a wireless transmitter that exposes persons in its vicinity.

4.2. Controlled Environment

Controlled Environments are defined as locations where there is exposure that may be incurred by persons who are aware of the potential for exposure, (i.e. as a result of employment or occupation). In general, occupational/controlled exposure limits are applicable to situations in which persons are exposed as a consequence of their employment, who have been made fully aware of the potential for exposure and can exercise control over their exposure. The exposure category is also applicable when the exposure is of a transient nature due to incidental passage through a location where the exposure levels may be higher than the general population/uncontrolled limits, but the exposed person is fully aware of the potential for exposure and can exercise control over his or her exposure by leaving the area or by some other appropriate means.

Limits for General Population/Uncontrolled Exposure (W/kg)

Type Exposure	Uncontrolled Environment Limit
Spatial Peak SAR (1g cube tissue for head and trunk)	1.6 W/kg
Spatial Peak SAR (10g cube tissue for limbs)	4.0 W/kg
Spatial Peak SAR (1g cube tissue for whole body)	0.08 W/kg

Note:

1. Occupational/Uncontrolled Environments are defined as locations where there is exposure that may be incurred by people who are aware of the potential for exposure (i.e. as a result of employment or occupation).
2. Whole-Body SAR is averaged over the entire body, partial-body SAR is averaged over any 1gram of tissue defined as a tissue volume in the shape of a cube. SAR for hands, wrists, feet and ankles is averaged over any 10 grams of tissue defined as a tissue volume in the shape of a cube.



5. Applied Reference Documents

Leading reference documents for testing:

Identity	Document Title	Method Determination /Remark
FCC 47 CFR Part 2(2.1093)	Radio Frequency Radiation Exposure Evaluation: Portable Devices	No deviation
IEEE 1528-2013	IEEE Recommended Practice for Determining the Peak Spatial-Average Specific Absorption Rate (SAR) in the Human Head from Wireless Communications Devices: Measurement Techniques	No deviation
KDB 447498 D01v06	General RF Exposure Guidance	No deviation
KDB 248227 D01v02r02	SAR Measurement Procedures for 802.11 Transmitters	No deviation
KDB 865664 D01v01r04	SAR Measurement 100 MHz to 6 GHz	No deviation
KDB 865664 D02v01r02	RF Exposure Reporting	No deviation
KDB 648474 D04v01r03	Handset SAR	No deviation
KDB 941225 D01v03r01	3G SAR MEAUREMENT PROCEDURES	No deviation
KDB 941225 D05v02r05	SAR Evaluation Consideration for LTE Devices	No deviation
KDB 941225 D06v02r01	SAR Evaluation Procedures For Portable Devices With Wireless Router Capabilities	No deviation
Note 1: Additions to, deviation, or exclusions from the method shall be judged in the "method determination" column of add, deviate or exclude from the specific method shall be explained in the "Remark" of the above table.		

6. SAR Measurement System

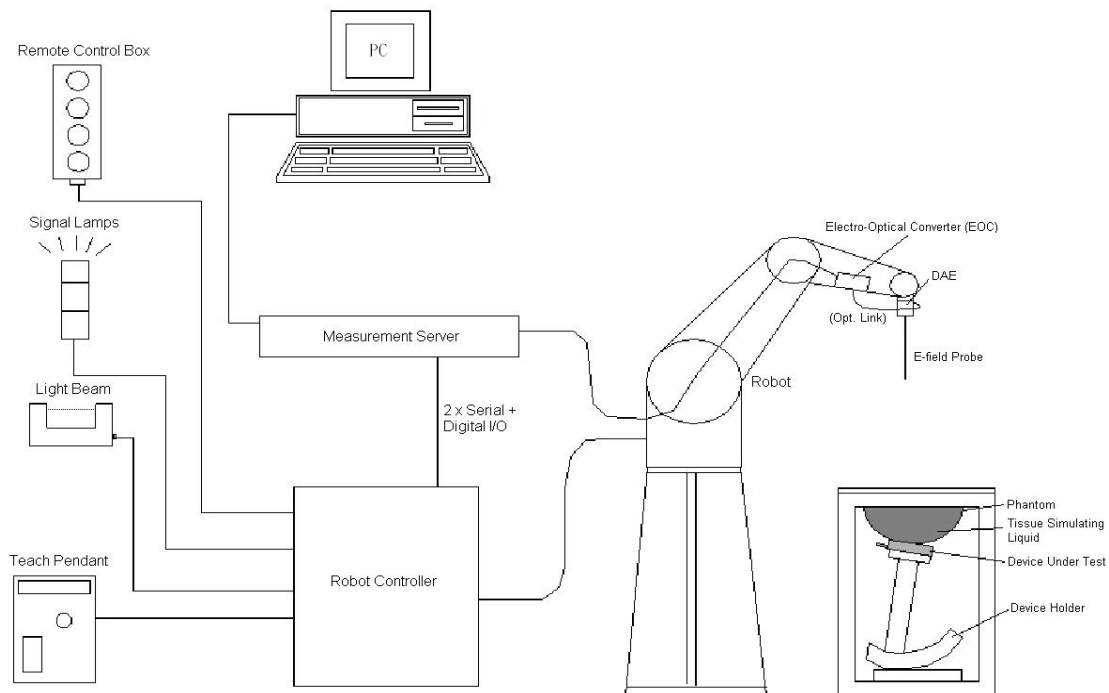


Fig 6.1 SPEAG DASY System Configurations

The DASY system for performance compliance tests is illustrated above graphically. This system consists of the following items:

- A standard high precision 6-axis robot with controller, a teach pendant and software.
- A data acquisition electronic (DAE) attached to the robot arm extension.
- A dosimetric probe equipped with an optical surface detector system.
- The electro-optical converter (ECO) performs the conversion between optical and electrical signals
- A measurement server performs the time critical tasks such as signal filtering, control of the robot operation and fast movement interrupts.
- A probe alignment unit which improves the accuracy of the probe positioning.
- A computer operating Windows XP.
- DASY software.
- Remote control with teach pendant and additional circuitry for robot safety such as warning lamps, etc.
- The SAM twin phantom.
- A device holder.
- Tissue simulating liquid.
- Dipole for evaluating the proper functioning of the system.
- Some of the components are described in details in the following sub-sections.

6.1. E-Field Probe

The SAR measurement is conducted with the dosimetric probe (manufactured by SPEAG). The probe is specially designed and calibrated for use in liquid with high permittivity. The dosimetric probe has special calibration in liquid at different frequency. This probe has a built in optical surface detection system to prevent from collision with phantom.

➤ E-Field Probe Specification

<ES3DV3 Probe>


Construction	Symmetrical design with triangular core Built-in optical fiber for surface detection system. Built-in shielding against static charges. PEEK enclosure material (resistant to organic solvents, e.g., DGBE)	
Frequency	10 MHz to 3 GHz; Linearity: ± 0.2 dB	
Directivity	± 0.2 dB in HSL (rotation around probe axis) ± 0.4 dB in HSL (rotation normal to probe axis)	
Dynamic Range	5 μ W/g to 100 mW/g; Linearity: ± 0.2 dB	
Dimensions	Overall length: 330 mm (Tip: 16 mm) Tip diameter: 6.8 mm (Body: 12 mm) Distance from probe tip to dipole centers: 2.7 mm	

Fig 6.2 Photo of ES3DV3

<EX3DV4 Probe>


Construction	Symmetrical design with triangular core Built-in shielding against static charges PEEK enclosure material (resistant to organic solvents, e.g., DGBE)	
Frequency	10 MHz to 6 GHz; Linearity: ± 0.2 dB	
Directivity	± 0.3 dB in HSL (rotation around probe axis) ± 0.5 dB in tissue material (rotation normal to probe axis)	
Dynamic Range	10 μ W/g to 100 mW/g; Linearity: ± 0.2 dB	
Dimensions	Overall length: 330 mm (Tip: 20 mm) Tip diameter: 2.5 mm (Body: 12 mm) Typical distance from probe tip to dipole centers: 1 mm	

Fig 6.3 Photo of EX3DV4

➤ E-Field Probe Calibration

Each probe needs to be calibrated according to a dosimetric assessment procedure with accuracy better than $\pm 10\%$. The spherical isotropy shall be evaluated and within ± 0.25 dB. The sensitivity parameters (NormX, NormY, and NormZ), the diode compression parameter (DCP) and the conversion factor (ConvF) of the probe are tested. The calibration data can be referred to appendix C of this report.

6.2. Data Acquisition Electronics (DAE)

The data acquisition electronics (DAE) consists of a highly sensitive electrometer-grade preamplifier with auto-zeroing, a channel and gain-switching multiplexer, a fast 16 bit AD-converter and a command decoder and control logic unit. AD-converter and a command decoder and control logic unit. Transmission to the measurement server is accomplished through an optical downlink for data and status information as well as an optical uplink for commands and the clock. The input impedance of the DAE is 200M Ω ; the inputs are symmetrical and floating. Common mode rejection is above 80 dB.



Fig 6.4 Photo of DAE

6.3. Robot

The SPEAG DASY system uses the high precision robots (DASY4: RX90BL; DASY5: TX90XL) type from Stäubli SA (France). For the 6-axis controller system, the robot controller version (DASY4: CS7MB; DASY5: CS8c) from Stäubli is used. The Stäubli robot series have many features that are important for our application:

High precision (repeatability ± 0.035 mm)

High reliability (industrial design)

Jerk-free straight movements

Low ELF interference (the closed metallic construction shields against motor control fields)



Fig 6.5 Photo of DASY5

6.4. Measurement Server

The measurement server is based on a PC/104 CPU board with CPU (DASY4: 166 MHz, Intel Pentium; DASY5: 400 MHz, Intel Celeron), chip disk (DASY4: 32 MB; DASY5: 128 MB), RAM (DASY4: 64 MB, DASY5: 128 MB). The necessary circuits for communication with the DAE electronic box, as well as the 16 bit AD converter system for optical detection and digital I/O interface are contained on the DASY I/O board, which is directly connected to the PC/104 bus of the CPU board. The measurement server performs all the real-time data evaluation for field measurements and surface detection, controls robot movements and handles safety operations.



Fig 6.6 Photo of Server for DASY5

6.5. Light Beam Unit

The light beam switch allows automatic "tooling" of the probe. During the process, the actual position of the probe tip with respect to the robot arm is measured, as well as the probe length and the horizontal probe offset. The software then corrects all movements, such that the robot coordinates are valid for the probe tip.

The repeatability of this process is better than 0.1 mm. If a position has been taught with an aligned probe, the same position will be reached with another aligned probe within 0.1 mm, even if the other probe has different dimensions. During probe rotations, the probe tip will keep its actual position.



Fig. 6.7 Photo of Light Beam

6.6. Phantom

<SAM Twin Phantom>

Shell Thickness	2 ± 0.2 mm (sagging: <1%) Center ear point: 6 ± 0.2 mm
Filling Volume	Approx. 25 liters
Dimensions	Length: 1000 mm; Width: 500 mm; Height: adjustable feet
Measurement Areas	Left Head, Right Head, Flat Phantom



Fig. 6.8 Photo of SAM Phantom

The bottom plate contains three pair of bolts for locking the device holder. The device holder positions are adjusted to the standard measurement positions in the three sections. A white cover is provided to tap the phantom during off-periods to prevent water evaporation and changes in the liquid parameters. On the phantom top, three reference markers are provided to identify the phantom position with respect to the robot.

6.7. Device Holder

<Device Holder for SAM Twin Phantom>

The SAR in the phantom is approximately inversely proportional to the square of the distance between the source and the liquid surface. For a source at 5 mm distance, a positioning uncertainty of ± 0.5 mm would produce a SAR uncertainty of ± 20 %. Accurate device positioning is therefore crucial for accurate and repeatable measurements. The positions in which the devices must be measured are defined by the standards.

The DASY device holder is designed to cope with different positions given in the standard. It has two scales for the device rotation (with respect to the body axis) and the device inclination (with respect to the line between the ear reference points). The rotation center for both scales is the ear reference point (EPR). Thus the device needs no repositioning when changing the angles.

The DASY device holder is constructed of low-loss POM material having the following dielectric parameters: relative permittivity $\epsilon = 3$ and loss tangent $\delta = 0.02$. The amount of dielectric material has been reduced in the closest vicinity of the device, since measurements have suggested that the influence of the clamp on the test results could thus be lowered.

<Laptop Extension Kit>

The extension is lightweight and made of POM, acrylic glass and foam. It fits easily on the upper part of the mounting device in place of the phone positioned. The extension is fully compatible with the SAM Twin and ELI phantoms.



Fig 6.9 Device Holder

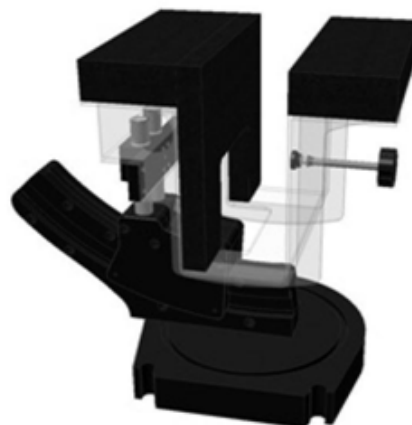


Fig 6.10 Laptop Extension Kit



6.8. Data Storage and Evaluation

➤ Data Storage

The DASY software stores the assessed data from the data acquisition electronics as raw data (in microvolt readings from the probe sensors), together with all the necessary software parameters for the data evaluation (probe calibration data, liquid parameters and device frequency and modulation data) in measurement files. The post-processing software evaluates the desired unit and format for output each time the data is visualized or exported. This allows verification of the complete software setup even after the measurement and allows correction of erroneous parameter settings. For example, if a measurement has been performed with an incorrect crest factor parameter in the device setup, the parameter can be corrected afterwards and the data can be reevaluated.

The measured data can be visualized or exported in different units or formats, depending on the selected probe type (e.g., [V/m], [A/m], [mW/g]). Some of these units are not available in certain situations or give meaningless results, e.g., a SAR-output in a non-lose media, will always be zero. Raw data can also be exported to perform the evaluation with other software packages.

➤ Data Evaluation

The DASY post-processing software (SEMCAD) automatically executes the following procedures to calculate the field units from the microvolt readings at the probe connector. The parameters used in the evaluation are stored in the configuration modules of the software.

Probe parameters:	- Sensitivity	$\text{Norm}_i, a_{i0}, a_{i1}, a_{i2}$
	- Conversion factor	ConvF_i
	- Diode compression point	dcpi
Device parameters:	- Frequency	f
	- Crest factor	cf
Media parameters:	- Conductivity	σ
	- Density	ρ

These parameters must be set correctly in the software. They can be found in the component documents or they can be imported into the software from the configuration files issued for the DASY components. In the direct measuring mode of the multi-meter option, the parameters of the actual system setup are used. In the scan visualization and export modes, the parameters stored in the corresponding document files are used.

The first step of the evaluation is a linearization of the filtered input signal to account for the compression characteristics of the detector diode. The compensation depends on the input signal, the diode type and the DC-transmission factor from the diode to the evaluation electronics. If the



exciting field is pulsed, the crest factor of the signal must be known to correctly compensate for peak power.

The formula for each channel can be given as:

$$V_i = U_i + U_i^2 \times \frac{cf}{dcp_i}$$

With V_i = compensated signal of channel i , ($i = x, y, z$)
 U_i = input signal of channel i , ($i = x, y, z$)
 cf = crest factor of exciting field (DASY parameter)
 dcp_i = diode compression point (DASY parameter)

From the compensated input signals, the primary field data for each channel can be evaluated:

$$\text{E-field Probes: } E_i = \sqrt{\frac{V_i}{\text{Norm}_i \times \text{ConvF}}}$$

$$\text{H-field Probes: } H_i = \sqrt{V_i} \times \frac{a_{i0} + a_{i1} + a_{i2} f^2}{f}$$

With V_i = compensated signal of channel i , ($i = x, y, z$)
 Norm_i = sensor sensitivity of channel i , ($i = x, y, z$), $\mu\text{V}/(\text{V}/\text{m})^2$ for E-field
 Probes ConvF = sensitivity enhancement in solution
 a_{ij} = sensor sensitivity factors for H-field probes
 f = carrier frequency [GHz]
 E_i = electric field strength of channel i in V/m
 H_i = magnetic field strength of channel i in A/m

The RSS value of the field components gives the total field strength (Hermitian magnitude):

$$E_{\text{tot}} = \sqrt{E_x^2 + E_y^2 + E_z^2}$$

The primary field data are used to calculate the derived field units.

$$\text{SAR} = E_{\text{tot}}^2 \times \frac{\sigma}{\rho \times 1000}$$

with SAR = local specific absorption rate in mW/g

E_{tot} = total field strength in V/m

σ = conductivity in [mho/m] or [Siemens/m]

ρ = equivalent tissue density in g/cm^3

Note that the density is set to 1, to account for actual head tissue density rather than the density of the tissue simulating liquid.



6.9. Test Equipment List

Manufacturer	Name of Equipment	Type/Model	Serial No./ SW Version	Calibration	
				Last Cal.	Due Date
SPEAG	750MHz System Validation Kit	D750V3	1223	2022.08.22	2025.08.21
SPEAG	900MHz System Validation Kit	D900V2	1d064	2021.12.17	2024.12.16
SPEAG	1800MHz System Validation Kit	D1800V2	2d158	2021.12.17	2024.12.16
SPEAG	2000MHz System Validation Kit	D2000V2	1050	2021.12.18	2024.12.17
SPEAG	2450MHz System Validation Kit	D2450V2	805	2021.12.17	2024.12.16
SPEAG	2600MHz System Validation Kit	D2600V2	1198	2022.08.17	2025.08.16
SPEAG	5000MHz System Validation Kit	D5GHzV2	1176	2021.12.19	2024.12.18
SPEAG	DOSIMETRIC ASSESSMENT SYSTEM Software	DASY52	52.10.4.1527	NCR	NCR
SPEAG	Dosimetric E-Field Probe	EX3DV4	7608	2024.03.21	2025.03.20
SPEAG	Data Acquisition Electronics	DAE4	1643	2024.03.27	2025.03.26
SPEAG	SAM Twin Phantom 2	QD000P40CC	TP-1464	NCR	NCR
SPEAG	Phone Positioner	N/A	N/A	NCR	NCR
R&S	Network Emulator	CMW500	165755	2024.01.25	2025.01.24
Anritsu	Network Emulator	MT8820C	6201274521	2024.01.25	2025.01.24
Agilent	Network Analyzer	E5071B	MY42404762	2024.01.25	2025.01.24
SPEAG	Dielectric Assessment KIT	DAK-3.5	1279	2024.03.18	2025.03.17
mini-circuits	Amplifier	ZHL-42W+	608501717	NCR	NCR
mini-circuits	Amplifier	ZVE-8G+	754401735	NCR	NCR
Agilent	Signal Generator	N5182B	MY53050509	2024.09.11	2025.09.10
R&S	Power Sensor	NRP8S	103215	2024.01.25	2025.01.24
Agilent	Power Meter	E4416A	MY45102093	2024.09.11	2025.09.10
R&S	Power Sensor	NRP8S	103240	2024.01.25	2025.01.24
Anritsu	Power Meter	E4418B	GB43318055	2024.05.30	2025.05.29
Agilent	Dual Directional Coupler	778D	50422	NA	NA
MCL	Attenuation	351-218-010	N/A	NA	NA
R&S	Spectrum Analyzer	N9030A	MY54170556	2024.09.18	2025.09.17
KTJ	Thermo meter	TA298	N/A	2023.11.22	2024.11.21
SPEAG	Tissue Simulating Liquids	HBBL600-10000V6		24H	

Note:

1. The calibration certificate of DASY can be referred to appendix F of this report.
2. The Insertion Loss calibration of Dual Directional Coupler and Attenuator were characterized via



the network analyzer and compensated during system check.

3. The dielectric probe kit was calibrated via the network analyzer, with the specified procedure (calibrated in pure water) and calibration kit (standard) short circuit, before the dielectric measurement. The specific procedure and calibration kit are provided by Speag.
4. In system check we need to monitor the level on the power meter, and adjust the power amplifier level to have precise power level to the dipole; the measured SAR will be normalized to 1W input power according to the ratio of 1W to the input power to the dipole. For system check, the calibration of the power amplifier is deemed not critically required for correct measurement; the power meter is critical and we do have calibration for it.
5. Attenuator insertion loss is calibrated by the network Analyzer, which the calibration is valid, before system check.
6. N.C.R means No Calibration Requirement.

7. Tissue Simulating Liquids

For SAR measurement of the field distribution inside the phantom, the phantom must be filled with homogeneous tissue simulating liquid to a depth of at least 15cm. For head SAR testing, the liquid height from the ear reference point (ERP) of the phantom to the liquid top surface is larger than 15cm. For body SAR testing, the liquid height from the center of the flat phantom to the liquid top surface is larger than 15cm, which is shown in Fig. 7.1. For body SAR testing, the liquid height from the center of the flat phantom to the liquid top surface is larger than 15 cm, which is shown in Fig. 7.2. The nominal dielectric values of the tissue simulating liquids in the phantom and the tolerance of 5% are listed in below table.

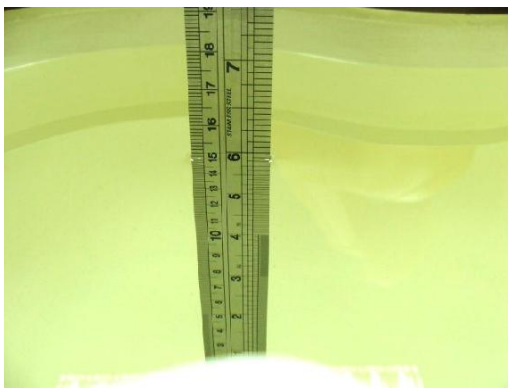


Fig 7.1 Photo of Liquid Height for Head SAR



Fig 7.2 Photo of Liquid Height for Body SAR

The following table gives the recipes for tissue simulating liquids

Frequency (MHz)	Water (%)	Sugar (%)	Cellulose (%)	Salt (%)	Preventol (%)	DGBE (%)	Conductivity (σ)	Permittivity (ϵ_r)
Head								
750	41.1	57.0	0.2	1.4	0.2	0	0.89	41.9
835	40.3	57.9	0.2	1.4	0.2	0	0.90	41.5
1800,1900,2000	55.2	0	0	0.3	0	44.5	1.40	40.0
2450	55.0	0	0	0	0	45.0	1.80	39.2
2600	54.8	0	0	0.1	0	45.1	1.96	39.0
Body								
750	51.7	47.2	0	0.9	0.1	0	0.96	55.5
835	50.8	48.2	0	0.9	0.1	0	0.97	55.2
1800,1900,2000	70.2	0	0	0.4	0	29.4	1.52	53.3
2450	68.6	0	0	0	0	31.4	1.95	52.7
2600	68.1	0	0	0.1	0	31.8	2.16	52.5

Simulating Liquid for 5GHz, Manufactured by SPEAG.

Ingredients	(% by weight)
Water	64~78%
Mineral oil	11~18%
Emulsifiers	9~15%
Additives and Salt	2~3%



Note: Please refer to the validation results for dielectric parameters of each frequency band. The dielectric properties of the tissue simulating liquids were verified prior to the SAR evaluation using a SPEAG Dielectric Assessment KIT and an Agilent Network Analyzer.

Table 1: Dielectric Performance of Tissue Simulating Liquid

Frequency (MHz)	Tissue Type	Liquid Temp. (°C)	Conductivity (σ)	Conductivity Target (σ)	Delta (σ) (%)	Limit (%)	Date
750	HSL	22.5	0.911	0.89	2.36	±5	2024.10.23
900	HSL	22.3	0.975	0.97	0.52	±5	2024.10.24
900	HSL	22.2	0.966	0.97	-0.41	±5	2024.10.26
900	HSL	22.3	0.963	0.97	-0.72	±5	2024.11.09
1800	HSL	22.2	1.394	1.40	-0.43	±5	2024.10.25
1800	HSL	22.4	1.403	1.40	0.21	±5	2024.10.27
1800	HSL	22.5	1.386	1.40	-1.00	±5	2024.11.03
2000	HSL	22.3	1.431	1.40	2.21	±5	2024.10.28
2450	HSL	22.2	1.855	1.80	3.06	±5	2024.11.01
2600	HSL	22.6	1.985	1.96	1.28	±5	2024.11.02
2600	HSL	22.2	1.990	1.96	1.53	±5	2024.11.05
2600	HSL	22.4	1.984	1.96	1.22	±5	2024.11.07
5250	HSL	22.3	4.721	4.71	0.23	±5	2024.11.04
5600	HSL	22.5	5.033	5.07	-0.73	±5	2024.11.06
5750	HSL	22.1	5.074	5.22	-2.80	±5	2024.11.08
Frequency (MHz)	Tissue Type	Liquid Temp. (°C)	Permittivity (ϵ_r)	Permittivity Target (ϵ_r)	Delta (ϵ_r) (%)	Limit (%)	Date
750	HSL	22.5	41.210	41.90	-1.65	±5	2024.10.23
900	HSL	22.3	40.601	41.50	-2.17	±5	2024.10.24
900	HSL	22.2	41.033	41.50	-1.13	±5	2024.10.26
900	HSL	22.3	40.613	41.50	-2.14	±5	2024.11.09
1800	HSL	22.2	40.403	40.00	1.01	±5	2024.10.25
1800	HSL	22.4	40.622	40.00	1.56	±5	2024.10.27
1800	HSL	22.5	40.362	40.00	0.91	±5	2024.11.03
2000	HSL	22.3	39.755	40.00	-0.61	±5	2024.10.28
2450	HSL	22.2	39.431	39.20	0.59	±5	2024.11.01
2600	HSL	22.6	38.299	39.00	-1.80	±5	2024.11.02
2600	HSL	22.2	38.402	39.00	-1.53	±5	2024.11.05
2600	HSL	22.4	38.287	39.00	-1.83	±5	2024.11.07
5250	HSL	22.3	35.309	35.95	-1.78	±5	2024.11.04



REPORT No.: SZ24090043S01

5600	HSL	22.5	34.618	35.50	-2.48	±5	2024.11.06
5750	HSL	22.1	34.472	35.35	-2.48	±5	2024.11.08

8. SAR System Verification

Each DASY system is equipped with one or more system validation kits. These units, together with the predefined measurement procedures within the DASY software, enable the user to conduct the system performance check and system validation. System validation kit includes a dipole, tripod holder to fix it underneath the flat phantom and a corresponding distance holder.

8.1. Purpose of System Performance Check

The system performance check verifies that the system operates within its specifications. System and operator errors can be detected and corrected. It is recommended that the system performance check be performed prior to any usage of the system in order to guarantee reproducible results. The system performance check uses normal SAR measurements in a simplified setup with a well characterized source. This setup was selected to give a high sensitivity to all parameters that might fail or vary over time. The system check does not intend to replace the calibration of the components, but indicates situations where the system uncertainty is exceeded due to drift or failure.

8.2. System Setup

The output power on dipole port must be calibrated to 24 dBm (250 mW) before dipole is connected. In the simplified setup for system evaluation, the DUT is replaced by a calibrated dipole and the power source is replaced by a continuous wave which comes from a signal generator. The calibrated dipole must be placed beneath the flat phantom section of the SAM twin phantom with the correct distance holder. The distance holder should touch the phantom surface with a light pressure at the reference marking and be oriented parallel to the long side of the phantom. The system check verifies that the system operates within its specifications. It is performed daily or before every SAR measurement. The system check uses normal SAR measurements in the flat section of the phantom with a matched dipole at a specified distance. The system verification setup is shown as below.



Fig 8.1 Photo of Dipole Setup

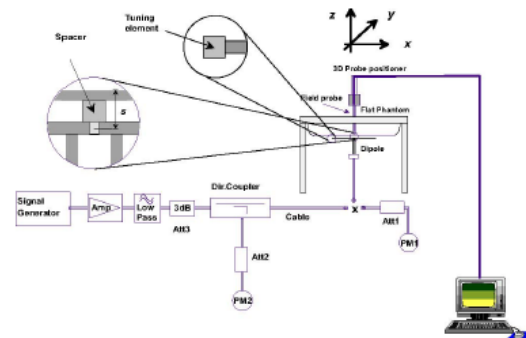


Fig 8.2 System Setup for System Evaluation



8.3. Validation Results

After system check testing, the SAR result will be normalized to 1W forward input power and compared with the reference SAR value derived from validation dipole certificate report. The deviation of system check should be within 10%.

<Validation Setup>

Frequency (MHz)	Tissue Type	Input Power (mW)	Dipole S/N	Probe S/N	DAE S/N
750	HSL	250	D750V3-1223	7608	1643
900	HSL	250	D900V2-1d064	7608	1643
1800	HSL	250	D1800V2-2d158	7608	1643
2000	HSL	250	D2000V2-1050	7608	1643
2450	HSL	250	D2450V2-805	7608	1643
2600	HSL	250	D2600V2-1198	7608	1643
5250	HSL	100	D5GHzV2-1176-5250	7608	1643
5600	HSL	100	D5GHzV2-1176-5600	7608	1643
5750	HSL	100	D5GHzV2-1176-5750	7608	1643

<System Validation>

Frequency (MHz)	Tissue Type	Conductivity (σ)	Permittivity (ϵ_r)	CW Signal Validation		
				Sensitivity	Probe Linearity	Probe Isotropy
750	HSL	0.851	42.43	PASS	PASS	PASS
835	HSL	0.898	41.88	PASS	PASS	PASS
1750	HSL	1.386	39.91	PASS	PASS	PASS
1800	HSL	1.449	41.26	PASS	PASS	PASS
1900	HSL	1.435	39.65	PASS	PASS	PASS
2000	HSL	1.451	39.42	PASS	PASS	PASS
2300	HSL	1.764	38.99	PASS	PASS	PASS
2450	HSL	1.863	38.85	PASS	PASS	PASS
2600	HSL	1.973	38.58	PASS	PASS	PASS
3400	HSL	2.88	38.10	PASS	PASS	PASS
3500	HSL	2.91	37.90	PASS	PASS	PASS
3700	HSL	3.05	37.70	PASS	PASS	PASS
3900	HSL	3.15	37.50	PASS	PASS	PASS
4100	HSL	3.25	37.20	PASS	PASS	PASS
4200	HSL	3.34	37.00	PASS	PASS	PASS
4400	HSL	3.58	36.70	PASS	PASS	PASS



4600	HSL	3.70	36.60	PASS	PASS	PASS
4800	HSL	3.82	36.40	PASS	PASS	PASS
4900	HSL	3.96	36.20	PASS	PASS	PASS
5250	HSL	4.528	35.32	PASS	PASS	PASS
5600	HSL	4.905	34.89	PASS	PASS	PASS
5750	HSL	5.077	34.28	PASS	PASS	PASS

Frequency (MHz)	Tissue Type	Conductivity (σ)	Permittivity (ϵ_r)	Modulation Signal Validation		
				Mod. Type	Duty Factor	PAR
750	HSL	0.851	42.43	N/A	N/A	N/A
835	HSL	0.898	41.88	GMSK	PASS	N/A
1750	HSL	1.386	39.91	N/A	N/A	N/A
1800	HSL	1.449	41.26	N/A	N/A	N/A
1900	HSL	1.435	39.65	GMSK	PASS	N/A
2000	HSL	1.451	39.42	GMSK	PASS	N/A
2300	HSL	1.764	38.99	OFDM	PASS	PASS
2450	HSL	1.863	38.85	OFDM	PASS	PASS
2600	HSL	1.973	38.58	TDD	PASS	N/A
3400	HSL	2.88	38.10	OFDM	PASS	PASS
3500	HSL	2.91	37.90	OFDM	PASS	PASS
3700	HSL	3.05	37.70	OFDM	PASS	PASS
3900	HSL	3.15	37.50	OFDM	PASS	PASS
4100	HSL	3.25	37.20	OFDM	PASS	PASS
4200	HSL	3.34	37.00	OFDM	PASS	PASS
4400	HSL	3.58	36.70	OFDM	PASS	PASS
4600	HSL	3.70	36.60	OFDM	PASS	PASS
4800	HSL	3.82	36.40	OFDM	PASS	PASS
4900	HSL	3.96	36.20	OFDM	PASS	PASS
5250	HSL	4.528	35.32	OFDM	N/A	PASS
5600	HSL	4.905	34.89	OFDM	N/A	PASS
5750	HSL	5.077	34.28	OFDM	N/A	PASS



<Validation Results>

Date	Frequency (MHz)	Tissue Type	Input Power (mW)	Measured 1g SAR (W/kg)	Targeted 1g SAR (W/kg)	Normalized 1g SAR (W/kg)	Deviation (%)
2024.10.23	750	HSL	250	2.05	8.54	8.2	-3.98
2024.10.24	900	HSL	250	2.89	11.20	11.56	3.21
2024.10.26	900	HSL	250	2.78	11.20	11.12	-0.71
2024.11.09	900	HSL	250	2.88	11.20	11.52	2.86
2024.10.25	1800	HSL	250	10.33	39.20	41.32	5.41
2024.10.27	1800	HSL	250	10.09	39.20	40.36	2.96
2024.11.03	1800	HSL	250	10.07	39.20	40.28	2.76
2024.10.28	2000	HSL	250	10.46	41.60	41.84	0.58
2024.11.01	2450	HSL	250	13.76	52.30	55.04	5.24
2024.11.02	2600	HSL	250	14.77	57.00	59.08	3.65
2024.11.05	2600	HSL	250	14.69	57.00	58.76	3.09
2024.11.07	2600	HSL	250	14.73	57.00	58.92	3.37
2024.11.04	5250	HSL	100	7.79	76.70	77.9	1.56
2024.11.06	5600	HSL	100	8.58	80.80	85.8	6.19
2024.11.08	5750	HSL	100	8.35	78.70	83.5	6.10

Date	Frequency (MHz)	Tissue Type	Input Power (mW)	Measured 10g SAR (W/kg)	Targeted 10g SAR (W/kg)	Normalized 10g SAR (W/kg)	Deviation (%)
2024.10.23	750	HSL	250	1.39	5.57	5.56	-0.18
2024.10.24	900	HSL	250	1.89	7.19	7.56	5.15
2024.10.26	900	HSL	250	1.74	7.19	6.96	-3.20
2024.11.09	900	HSL	250	1.84	7.19	7.36	2.36
2024.10.25	1800	HSL	250	5.15	20.10	20.6	2.49
2024.10.27	1800	HSL	250	5.33	20.10	21.32	6.07
2024.11.03	1800	HSL	250	5.24	20.10	20.96	4.28
2024.10.28	2000	HSL	250	5.24	20.70	20.96	1.26
2024.11.01	2450	HSL	250	5.63	23.90	22.52	-5.77
2024.11.02	2600	HSL	250	6.82	25.70	27.28	6.15
2024.11.05	2600	HSL	250	6.87	25.70	27.48	6.93
2024.11.07	2600	HSL	250	6.79	25.70	27.16	5.68
2024.11.04	5250	HSL	100	2.32	22.10	23.2	4.98
2024.11.06	5600	HSL	100	2.46	23.30	24.6	5.58
2024.11.08	5750	HSL	100	2.41	22.50	24.1	7.11

Note: System checks the specific test data please see Annex C.

9. EUT Testing Position

This EUT was tested in ten different positions. They are right cheek/right tilted/left cheek/left tilted for head, Front/Back/Right/Left/Top/Bottom of the EUT with phantom 10 mm gap, as illustrated below, please refer to Appendix B for the test setup photos.

9.1. Handset Reference Points

The vertical centre line passes through two points on the front side of the handset – the midpoint of the width w_t of the handset at the level of the acoustic output, and the midpoint of the width w_b of the bottom of the handset.

The horizontal line is perpendicular to the vertical centre line and passes the center of the acoustic output. The horizontal line is also tangential to the handset at point A.

The two lines intersect at point A. Note that for many handsets, point A coincides with the center of the acoustic output; however, the acoustic output may be located elsewhere on the horizontal line. Also note that the vertical centre line is not necessarily parallel to the front face of the handset, especially for clamshell handsets, handsets with flip covers, and other irregularly shaped handsets.



Fig. 9.1 Illustration for Cheek Position

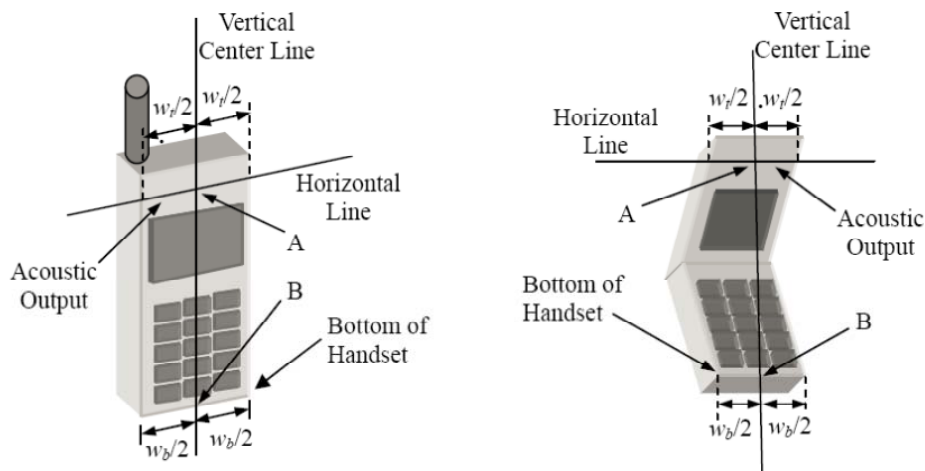


Fig. 9.2 Illustration for Handset Vertical and Horizontal Reference Lines

9.2. Positioning for Cheek / Touch

To position the device with the vertical center line of the body of the device and the horizontal line crossing the center piece in a plane parallel to the sagittal plane of the phantom. While maintaining the device in this plane, align the vertical center line with the reference plane containing the three ear and mouth reference point (M: Mouth, RE: Right Ear and LE: Left Ear) and align the center of the ear piece with the line RE-LE.

To move the device towards the phantom with the ear piece aligned with the line LE-RE until the phone touched the ear. While maintaining the device in the reference plane and maintaining the phone contact with the ear, move the bottom of the phone until any point on the front side is in contact with the cheek of the phantom or until contact with the ear is lost (see below figure)

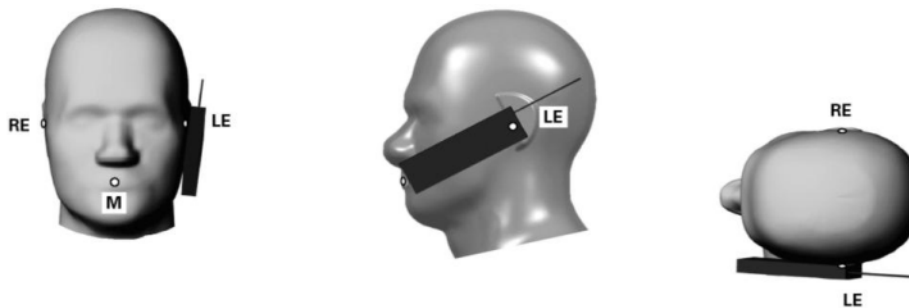


Fig 9.3 Illustration for Cheek Position

9.3. Positioning for Ear / 15° Tilt

To position the device in the “cheek” position described above. While maintaining the device the reference plane described above and pivoting against the ear, moves it outward away from the mouth by an angle of 15 degrees or until contact with the ear is lost (see figure below).

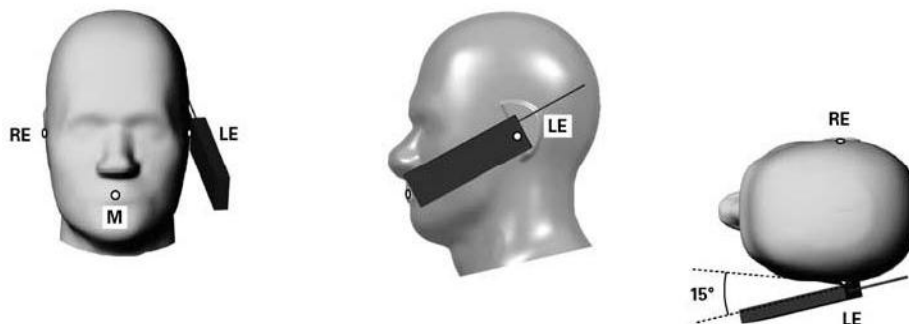


Fig 9.4 Illustration for Tilted Position

9.4. SAR Evaluation near the Mouth/Jaw Regions of the Phantom

Antennas located near the bottom of a phone may require SAR measurements around the mouth and jaw regions of the SAM head phantom. This typically applies to clam-shell style phones that are generally longer in the unfolded normal use positions or to certain older style long rectangular phones.

Under these circumstances, the following procedures apply, adopted from the FCC guidance on SAR handsets document FCC KDB Publication 648474 D04v01r03. The SAR required in these regions of SAM should be measured using a flat phantom. The phone should be positioned with a separation distance of 4 mm between the ear reference point (ERP) and the outer surface of the flat phantom shell. While maintaining this distance at the ERP location, the low (bottom) edge of the phone should be lowered from the phantom to establish the same separation distance between the peak SAR locations identified by the truncated partial SAR distribution measured with the SAM phantom. The distance from the peak SAR location to the phone is determined by the straight line passing perpendicularly through the phantom surface. When it is not feasible to maintain 4 mm separation at the ERP while also establishing the required separation at the peak SAR location, the top edge of the phone will be allowed to touch the phantom with a separation < 4 mm at the ERP. The phone should not be tilted to the left or right while placed in this inclined position to the flat phantom.

9.5. Body-worn Configurations

The body-worn configurations shall be tested with the supplied accessories (belt-clips, holsters, etc.) attached to the device in normal use configuration.

For body-worn and other configurations a flat phantom shall be used which is comprised of material with electrical properties similar to the corresponding tissues.

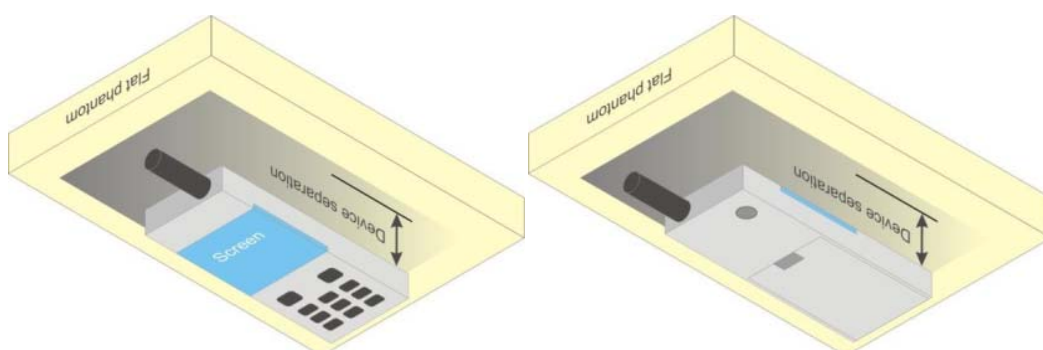


Fig 9.5 Illustration for Body Worn Position

9.6. Hotspot Mode Exposure Position Conditions

For handsets that support hotspot mode operations, with wireless router capabilities and various web browsing functions, the relevant hand and body exposure conditions are tested according to the hotspot SAR procedures in KDB 941225. A test separation distance of 10 mm is required between the phantom and all surfaces and edges with a transmitting antenna located within 25 mm from that surface or edge. When the form factor of a handset is smaller than 9 cm x 5 cm, a test separation distance of 5 mm (instead of 10 mm) is required for testing hotspot mode. When the separation distance required for body-worn accessory testing is larger than or equal to that tested for hotspot mode, in the same wireless mode and for the same surface of the phone, the hotspot mode SAR data may be used to support body-worn accessory SAR compliance for that particular configuration (surface).

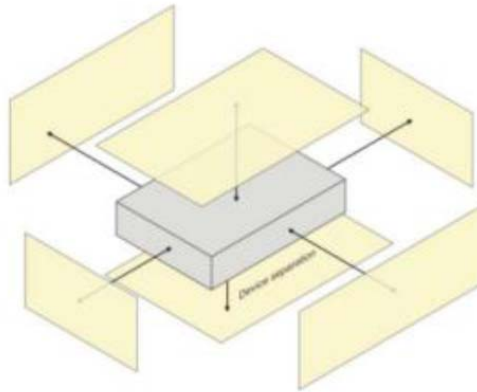


Fig 9.6 Illustration for Hotspot Position

10. Measurement Procedures

The measurement procedures are as follows:

<Conducted power measurement>

- (a) For WWAN power measurement, use base station simulator to configure EUT WWAN transmission in conducted connection with RF cable, at maximum power in each supported wireless interface and frequency band.
- (b) Read the WWAN RF power level from the base station simulator.
- (c) For WLAN/BT power measurement, use engineering software to configure EUT WLAN/BT continuously transmission, at maximum RF power in each supported wireless interface and frequency band.
- (d) Connect EUT RF port through RF cable to the power meter, and measure WLAN/BT output power.

<SAR measurement>

- (a) Use base station simulator to configure EUT WWAN transmission in radiated connection, and engineering software to configure EUT WLAN/BT continuously transmission, at maximum RF power, in the highest power channel.
- (b) Place the EUT in the positions as Appendix D demonstrates.
- (c) Set scan area, grid size and other setting on the DASY software.
- (d) Measure SAR results for the highest power channel on each testing position.
- (e) Find out the largest SAR result on these testing positions of each band.
- (f) Measure SAR results for other channels in worst SAR testing position if the reported SAR of highest power channel is larger than 0.8 W/kg.

According to the test standard, the recommended procedure for assessing the peak spatial-average SAR value consists of the following steps:

- (a) Power reference measurement.
- (b) Area scan.
- (c) Zoom scan.
- (d) Power drift measurement.

10.1. Spatial Peak SAR Evaluation

The procedure for spatial peak SAR evaluation has been implemented according to the test standard. It can be conducted for 1g and 10g, as well as for user-specific masses. The DASY software includes all numerical procedures necessary to evaluate the spatial peak SAR value.

The base for the evaluation is a "cube" measurement. The measured volume must include the 1g and 10g cubes with the highest averaged SAR values. For that purpose, the center of the measured volume is aligned to the interpolated peak SAR value of a previously performed area scan.



The entire evaluation of the spatial peak values is performed within the post-processing engine (SEMCAD). The system always gives the maximum values for the 1g and 10g cubes. The algorithm to find the cube with highest averaged SAR is divided into the following stages:

- (a) Extraction of the measured data (grid and values) from the Zoom Scan.
- (b) Calculation of the SAR value at every measurement point based on all stored data (A/D values and measurement parameters).
- (c) Generation of a high-resolution mesh within the measured volume.
- (d) Interpolation of all measured values from the measurement grid to the high-resolution grid.
- (e) Extrapolation of the entire 3-D field distribution to the phantom surface over the distance from sensor to surface.
- (f) Calculation of the averaged SAR within masses of 1g and 10g.

10.2. Power Reference Measurement

The Power Reference Measurement and Power Drift Measurements are for monitoring the power drift of the device under test in the batch process. The minimum distance of probe sensors to surface determines the closest measurement point to phantom surface. This distance cannot be smaller than the distance of sensor calibration points to probe tip as defined in the probe properties.

10.3. Area Scan Procedures

Area scans are defined prior to the measurement process being executed with a user defined variable spacing between each measurement point (integral) allowing low uncertainty measurements to be conducted. Scans defined for FCC applications utilize a 10mm² step integral, with 1mm interpolation used to locate the peak SAR area used for zoom scan assessments.

When an Area Scan has measured all reachable points, it computes the field maxima founding the scanned area, within a range of the global maximum. The range (in dB) is specified in the standards for compliance testing. For example, a 2 dB range is required in IEEE1528-2003.

10.4. Zoom Scan Procedures

Zoom Scans are used to assess the peak spatial SAR values within a cubic averaging volume containing 1 g and 10 g of simulated tissue. A density of 1000 kg/m³ is used to represent the head and body tissue density and not the phantom liquid density, in order to be consistent with the definition of the liquid dielectric properties, i.e. the side length of the 1g cube is 10mm, with the side



length of the 10 g cube 21,5mm. The zoom scan integer steps can be user defined so as to reduce uncertainty, but normal practice for typical test applications utilize a physical step of 5x5x7 (8mmx8mmx5mm) providing a volume of 32mm in the X & Y axis, and 30mm in the Z axis.

10.5. SAR Averaged Methods

In DASYS, the interpolation and extrapolation are both based on the modified Quadratic Sheppard's method. The interpolation scheme combines a least-square fitted function method and a weighted average method which are the two basic types of computational interpolation and approximation.

Extrapolation routines are used to obtain SAR values between the lowest measurement points and the inner phantom surface. The extrapolation distance is determined by the surface detection distance and the probe sensor offset. The uncertainty increases with the extrapolation distance. To keep the uncertainty within 1% for the 1 g and 10 g cubes, the extrapolation distance should not be larger than 5 mm.

10.6. Power Drift Monitoring

All SAR testing is under the DUT install full charged battery and transmit maximum output power. In DASYS measurement software, the power reference measurement and power drift measurement procedures are used for monitoring the power drift of DUT during SAR test. Both these procedures measure the field at a specified reference position before and after the SAR testing. The software will calculate the field difference in dB. If the power drift more than 5%, the SAR will be retested.

11. SAR Test Procedure

11.1. General Scan Requirements

Probe boundary effect error compensation is required for measurements with the probe tip closer than half a probe tip diameter to the phantom surface. Both the probe tip diameter and sensor offset distance must satisfy measurement protocols; to ensure probe boundary effect errors are minimized and the higher fields closest to the phantom surface can be correctly measured and extrapolated to the phantom surface for computing 1-g SAR. Tolerances of the post-processing algorithms must be verified by the test laboratory for the scan resolutions used in the SAR measurements, according to the reference distribution functions specified in IEEE Std. 1528-2013.

		≤ 3 GHz	> 3 GHz
Maximum distance from closest measurement point (geometric center of probe sensors) to phantom surface		5 mm \pm 1 mm	$\frac{1}{2} \cdot \delta \cdot \ln(2)$ mm \pm 0.5 mm
Maximum probe angle from probe axis to phantom surface normal at the measurement location		$30^\circ \pm 1^\circ$	$20^\circ \pm 1^\circ$
Maximum area scan spatial resolution: Δx_{Area} , Δy_{Area}		≤ 2 GHz: ≤ 15 mm 2 – 3 GHz: ≤ 12 mm	3 – 4 GHz: ≤ 12 mm 4 – 6 GHz: ≤ 10 mm
		When the x or y dimension of the test device, in the measurement plane orientation, is smaller than the above, the measurement resolution must be \leq the corresponding x or y dimension of the test device with at least one measurement point on the test device.	
Maximum zoom scan spatial resolution: Δx_{Zoom} , Δy_{Zoom}		≤ 2 GHz: ≤ 8 mm 2 – 3 GHz: ≤ 5 mm*	3 – 4 GHz: ≤ 5 mm* 4 – 6 GHz: ≤ 4 mm*
Maximum zoom scan spatial resolution, normal to phantom surface	uniform grid: $\Delta z_{Zoom}(n)$	≤ 5 mm	3 – 4 GHz: ≤ 4 mm 4 – 5 GHz: ≤ 3 mm 5 – 6 GHz: ≤ 2 mm
	graded grid $\Delta z_{Zoom}(1)$: between 1 st two points closest to phantom surface	≤ 4 mm	3 – 4 GHz: ≤ 3 mm 4 – 5 GHz: ≤ 2.5 mm 5 – 6 GHz: ≤ 2 mm
	$\Delta z_{Zoom}(n>1)$: between subsequent points	$\leq 1.5 \cdot \Delta z_{Zoom}(n-1)$ mm	
Minimum zoom scan volume	x, y, z	≥ 30 mm	3 – 4 GHz: ≥ 28 mm 4 – 5 GHz: ≥ 25 mm 5 – 6 GHz: ≥ 22 mm
Note: δ is the penetration depth of a plane-wave at normal incidence to the tissue medium; see IEEE Std 1528-2013 for details. * When zoom scan is required and the <i>reported</i> SAR from the <i>area scan based 1-g SAR estimation</i> procedures of KDB Publication 447498 is ≤ 1.4 W/kg, ≤ 8 mm, ≤ 7 mm and ≤ 5 mm zoom scan resolution may be applied, respectively, for 2 GHz to 3 GHz, 3 GHz to 4 GHz and 4 GHz to 6 GHz.			

11.2. Test Procedure

The Following steps are used for each test position

1. Establish a call with the maximum output power with a base station simulator. The connection between the mobile and the base station simulator is established via air interface.
2. Measurement of the local E-field value at a fixed location. This value serves as a reference value for calculating a possible power drift.
3. Measurement of the SAR distribution with a grid of 8 to 16mm * 8 to 16 mm and a constant distance to the inner surface of the phantom. Since the sensors cannot directly measure at the inner phantom surface, the values between the sensors and the inner phantom surface are extrapolated. With these values the area of the maximum SAR is calculated by an interpolation scheme.
4. Around this point, a cube of 30 * 30 * 30 mm or 32 * 32 * 32 mm is assessed by measuring 5 or 8 * 5 or 8*4 or 5 mm. With these data, the peak spatial-average SAR value can be calculated.

11.3. Description of Interpolation/Extrapolation Scheme

The local SAR inside the phantom is measured using small dipole sensing elements inside a probe body. The probe tip must not be in contact with the phantom surface in order to minimize measurements errors, but the highest local SAR will occur at the surface of the phantom.

An extrapolation is using to determinate this highest local SAR values. The extrapolation is based on a fourth-order least-square polynomial fit of measured data. The local SAR value is then extrapolated from the liquid surface with a 1mm step.

The measurements have to be performed over a limited time (due to the duration of the battery) so the step of measurement is high. It could vary between 5 and 8 mm. To obtain an accurate assessment of the maximum SAR averaged over 10 grams and 1 gram requires a very fine resolution in the three dimensional scanned data array.

11.4. Wireless Router

Some battery-operated handsets have the capability to transmit and receive user through simultaneous transmission of WIFI simultaneously with a separate licensed transmitter. The FCC has provided guidance in FCC KDB Publication 941225 D06 v02r01 where SAR test considerations for handsets ($L \times W \geq 9 \text{ cm} \times 5 \text{ cm}$) are based on a composite test separation distance of 10 from the front, back and edges of the device containing transmitting antennas within 2.5cm of their edges,



determined from general mixed use conditions for this type of devices. Since the hotspot SAR results may overlap with the body-worn accessory SAR requirements, the more conservative configurations can be considered, thus excluding some body-worn accessory SAR tests.

When the user enables the personal wireless router functions for the handset, actual operations include simultaneous transmission of both the WIFI transmitter and another licensed transmitter. Both transmitters often do not transmit at the same transmitting frequency and thus cannot be evaluated for SAR under actual use conditions due to the limitations of the SAR assessment probes. Therefore, SAR must be evaluated for each frequency transmission and mode separately and spatially summed with the WIFI transmitter according to FCC KDB Publication 447498 D01v06 publication procedures. The "Portable Hotspot" feature on the handset was NOT activated during SAR assessments, to ensure the SAR measurements were evaluated for a single transmission frequency RF signal at a time.



12. SAR Test Configuration

<GSM Mode>

A summary of these settings are illustrated below:

For GSM850 frequency band, the power control is set to 5 for GSM/GPRS mode (GSMK-CS1) and set to 8 for EDGE mode (MCS5); For GSM1900 frequency band, the power control is set to 0 for GSM/GPRS mode (GSMK-CS1) and set to 2 for EDGE mode (MCS5).

1. Per KDB 447498 D01v06, the maximum output power channel is used for SAR testing and for further SAR test reduction.
2. Per KDB 941225 D01v03r01, SAR test reduction for GSM / GPRS / EDGE modes is determined by the source-based time-averaged output power including tune-up tolerance. The mode with highest specified time-averaged output power should be tested for SAR compliance in the applicable exposure conditions. For modes with the same specified maximum output power and tolerance, the higher number time-slot configuration should be tested. Therefore, the GPRS (4Tx slots) for GSM850/GSM1900 is considered as the primary mode.
3. Other configurations of GSM / GPRS / EDGE are considered as secondary modes.

Timeslot consignations:

Remark:				
1. The frame-averaged power is linearly reported the maximum burst averaged power over 8 time slots. The calculated method is shown as below: The duty cycle "x" of different time slots as below: 1 TX slot is 1/8, 2 TX slots is 2/8, 3 TX slots is 3/8 and 4 TX slots is 4/8 Based on the calculation formula: Frame-averaged power = Burst averaged power + 10 log (x) So, Frame-averaged power (1 TX slot) = Burst averaged power (1 TX slot) – 9.03 Frame-averaged power (2 TX slots) = Burst averaged power (2 TX slots) – 6.02 Frame-averaged power (3 TX slots) = Burst averaged power (3 TX slots) – 4.26 Frame-averaged power (4 TX slots) = Burst averaged power (4 TX slots) – 3.01				
2. CS1 coding scheme was used in GPRS conducted power measurements and SAR testing, MCS5 coding scheme was used in EGPRS conducted power measurements and SAR testing (if necessary).				
No. of Slots:	Slot 1	Slot 2	Slot 3	Slot 4
Slot Consignation:	1Up 4Down	2Up 3Down	3Up 2Down	4Up 1Down
Duty Cycle:	1:8.3	1:4.15	1:2.77	1:2.08
Correct Factor:	-9.03dB	-6.02dB	-4.26dB	-3.01dB



<WCDMA Mode>

Summary of UMTS conducted power measurement:

1. The 3G SAR test reduction procedure is applied, when the maximum output power and tune-up tolerance specified for production units in a secondary mode is $\leq \frac{1}{4}$ dB higher than the primary mode, SAR measurement is not required for the secondary mode.
2. The following tests were conducted according to the test requirements outlines in 3GPP TS 34.121 specification.
3. The procedures in KDB 941225 D01v03r01 are applied for 3GPP Rel. 6 HSPA to configure the device in the required sub-test mode(s) to determine SAR test exclusion.
4. For HSPA+ devices supporting 16 QAM in the uplink, power measurements procedure is according to the configurations in Table C.11.1.4 of 3GPP TS 34.121-1.
5. Per KDB 941225 D01v03r01, RMC 12.2kbps setting is used to evaluate SAR. The maximum output power and tune-up tolerance specified for production units in HSDPA / HSUPA / DC-HSDPA / HSPA+ is $\leq \frac{1}{4}$ dB higher than RMC 12.2Kbps or when the highest reported SAR of the RMC12.2Kbps is scaled by the ratio of specified maximum output power and tune-up tolerance of HSDPA / HSUPA / DC-HSDPA / HSPA+ to RMC12.2Kbps and the adjusted SAR is ≤ 1.2 W/kg, SAR measurement is not required for HSDPA / HSUPA / DC-HSDPA / HSPA+, and according to the following RF output power, the output power results of the secondary modes (HSDPA / HSUPA / DC-HSDPA / HSPA+) are less than $\frac{1}{4}$ dB higher than the primary modes; therefore, SAR measurement is not required for HSDPA / HSUPA / DC-HSDPA / HSPA+.
6. A fixed level power reduction is applied for WCDMA Band II when handset open Hotspot mode, the power reduction triggered.

HSDPA Setup Configuration

Sub-test	β_c	β_a	β_a (SF)	β_c/β_a	$\beta_{hs}^{(1)}$	CM (dB) ⁽²⁾
1	2/15	15/15	64	2/15	4/15	0.0
2	12/15 ⁽³⁾	15/15 ⁽³⁾	64	12/15 ⁽³⁾	24/15	1.0
3	15/15	8/15	64	15/8	30/15	1.5
4	15/15	4/15	64	15/4	30/15	1.5

Note 1: $\Delta_{ACK}, \Delta_{NACK}$ and $\Delta_{CQI} = 8 \Leftrightarrow A_{hs} = \beta_{hs}/\beta_c = 30/15 \Leftrightarrow \beta_{hs} = 30/15 * \beta_c$
 Note 2: CM = 1 for $\beta_c/\beta_a = 12/15, \beta_{hs}/\beta_c = 24/15$.
 Note 3: For subtest 2 the β_c/β_a ratio of 12/15 for the TFC during the measurement period (TF1, TF0) is achieved by setting the signaled gain factors for the reference TFC (TF1, TF1) to $\beta_c = 11/15$ and $\beta_a = 15/15$.

HSUPA Setup Configuration

Sub-test	β_c	β_d	β_d (SF)	β_c/β_d	$\beta_{hs}^{(1)}$	β_{ec}	β_{ed}	β_{ed} (SF)	β_{ed} (codes)	CM ⁽²⁾ (dB)	MPR (dB)	AG ⁽⁴⁾ Index	E-TFCI
1	11/15 ⁽³⁾	15/15 ⁽³⁾	64	11/15 ⁽³⁾	22/15	209/225	1039/225	4	1	1.0	0.0	20	75
2	6/15	15/15	64	6/15	12/15	12/15	94/75	4	1	3.0	2.0	12	67
3	15/15	9/15	64	15/9	30/15	30/15	β_{ed1} : 47/15 β_{ed2} : 47/15	4	2	2.0	1.0	15	92
4	2/15	15/15	64	2/15	4/15	2/15	56/75	4	1	3.0	2.0	17	71
5	15/15 ⁽⁴⁾	15/15 ⁽⁴⁾	64	15/15 ⁽⁴⁾	30/15	24/15	134/15	4	1	1.0	0.0	21	81

Note 1: Δ_{ACK} , Δ_{NACK} and $\Delta_{CQI} = 8 \Leftrightarrow A_{hs} = \beta_{hs}/\beta_c = 30/15 \Leftrightarrow \beta_{hs} = 30/15 * \beta_c$.

Note 2: CM = 1 for $\beta_c/\beta_d = 12/15$, $\beta_{hs}/\beta_c = 24/15$. For all other combinations of DPDCH, DPCCH, HS-DPCCH, E-DPDCH and E-DPCCH the MPR is based on the relative CM difference.

Note 3: For subtest 1 the β_c/β_d ratio of 11/15 for the TFC during the measurement period (TF1, TF0) is achieved by setting the signaled gain factors for the reference TFC (TF1, TF0) to $\beta_c = 10/15$ and $\beta_d = 15/15$.

Note 4: For subtest 5 the β_c/β_d ratio of 15/15 for the TFC during the measurement period (TF1, TF0) is achieved by setting the signaled gain factors for the reference TFC (TF1, TF0) to $\beta_c = 14/15$ and $\beta_d = 15/15$.

Note 5: Testing UE using E-DPDCH Physical Layer category 1 Sub-test 3 is not required according to TS 25.306 Table 5.1g.

Note 6: β_{ed} cannot be set directly; it is set by Absolute Grant Value.

HSPA+ 3GPP release 7 (uplink category 7) 16QAM, Setup Configuration:
Table C.11.1.4: β values for transmitter characteristics tests with HS-DPCCH and E-DCH with 16QAM

Sub-test	β_c (Note 3)	β_d	β_{hs} (Note 1)	β_{ec}	β_{ed} (2xSF2) (Note 4)	β_{ed} (2xSF4) (Note 4)	CM (dB) (Note 2)	MPR (dB) (Note 2)	AG Index (Note 4)	E-TFCI (Note 5)	E-TFCI (boost)
1	1	0	30/15	30/15	β_{ed1} : 30/15 β_{ed2} : 30/15	β_{ed3} : 24/15 β_{ed4} : 24/15	3.5	2.5	14	105	105

Note 1: Δ_{ACK} , Δ_{NACK} and $\Delta_{CQI} = 30/15$ with $\beta_{hs} = 30/15 * \beta_c$.

Note 2: CM = 3.5 and the MPR is based on the relative CM difference, MPR = MAX(CM-1,0).

Note 3: DPDCH is not configured, therefore the β_c is set to 1 and $\beta_d = 0$ by default.

Note 4: β_{ed} can not be set directly; it is set by Absolute Grant Value.

Note 5: All the sub-tests require the UE to transmit 2SF2+2SF4 16QAM EDCH and they apply for UE using E-DPDCH category 7. E-DCH TTI is set to 2ms TTI and E-DCH table index = 2. To support these E-DCH configurations DPDCH is not allocated. The UE is signaled to use the extrapolation algorithm.

**DC-HSDPA Setup Configuration**

The following tests were completed according to procedures in section 7.3.13 of 3GPP TS34.108 v9.5.0. A summary of these settings are illustrated below:

Downlink Physical Channels are set as per 3GPP TS34.121-1 v9.0.0 E.5.

Table E.5.0: Levels for HSDPA connection setup

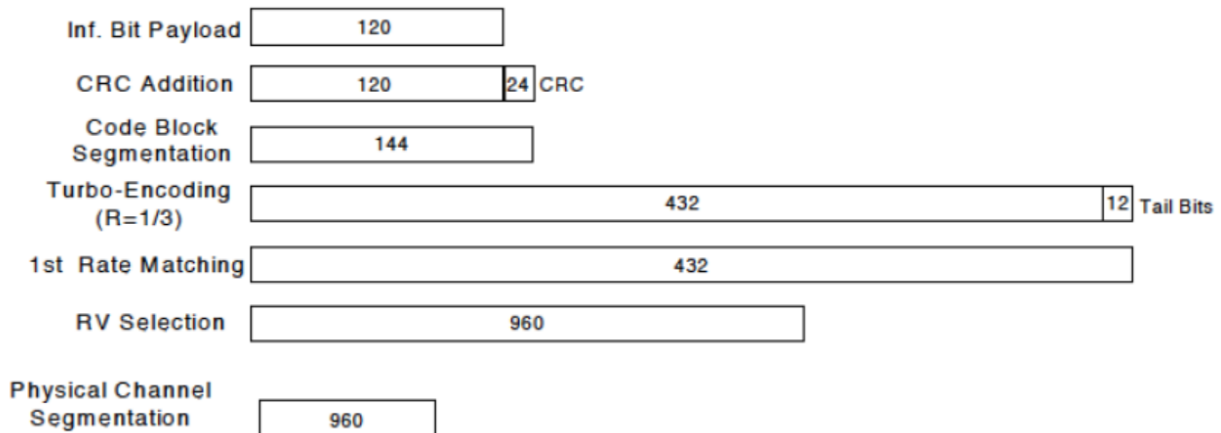
Parameter During Connection setup	Unit	Value
P-CPICH_Ec/lor	dB	-10
P-CCPCH and SCH_Ec/lor	dB	-12
PICH_Ec/lor	dB	-15
HS-PDSCH	dB	off
HS-SCCH_1	dB	off
DPCH_Ec/lor	dB	-5
OCNS_Ec/lor	dB	-3.1

Call is set up as per 3GPP TS34.108 v9.5.0 sub clause 7.3.13

The configurations of the fixed reference channels for HSDPA RF tests are described in 3GPP TS 34.121, annex C for FDD and 3GPP TS 34.122.

Table C.8.1.12: Fixed Reference Channel H-Set 12

Parameter	Unit	Value
Nominal Avg. Inf. Bit Rate	kbps	60
inter-TTI Distance	TTI's	1
Number of HARQ Processes	Processes	6
Information Bit Payload (N_{INF})	Bits	120
Number Code Blocks	Blocks	1
Binary Channel Bits Per TTI	Bits	960
Total Available SML's in UE	SML's	19200
Number of SML's per HARQ Proc.	SML's	3200
Coding Rate		0.15
Number of Physical Channel Codes	Codes	1
Modulation		QPSK
Note 1: The RMC is intended to be used for DC-HSDPA mode and both cells shall transmit with identical parameters as listed in the table. Note 2: Maximum number of transmission is limited to 1, i.e., retransmission is not allowed. The redundancy and constellation version 0 shall be used.		


Figure C.8.19: Coding rate for Fixed reference Channel H-Set 12 (QPSK)



<CDMA Mode>

1xEV-DO Rev. B

Call box setup procedure

1xEV-DO Release B

1> CMW 500 Signal Generator > 1xEV-DO Taskbar Enable

2> CMW 500 1xEV-DO Signaling Configuration Window >

3> 1xEV-DO Signaling On Window:

Under Access Network Control:

Band Class: BC0: US Cellular

RF Channel: 31

1xEV-DO Power: -70 dBm

4> 1xEV-DO Signaling Configuration Window

Under RF Frequency Band / Channel: Enter Ch. Frequency

- Under Carrier Configuration: RF Frequency
For Two Carriers: Low Channel (1013)

	<u>RF Channel</u>	<u>RF Channel Offset</u>
Carrier [0]	31	0
Carrier [1]	1013	982

- Under Carrier Configuration: RF Pilot
- | | <u>Carrier Sector</u> | <u>Active on AN</u> | <u>Assigned to AT</u> |
|-----------|-----------------------|---------------------|-----------------------|
| Pilot [0] | C0/S0 | ✓ | ✓ |
| | CA/S1 | ✓ | ✓ |

For Three Carriers: Low Channel (1013)

	<u>RF Channel</u>	<u>RF Channel Offset</u>
Carrier [0]	72	0
Carrier [1]	31	-41
Carrier [2]	1013	941

- Under Carrier Configuration: RF Pilot
- | | <u>Carrier Sector</u> | <u>Active on AN</u> | <u>Assigned to AT</u> |
|-----------|-----------------------|---------------------|-----------------------|
| Pilot [0] | C0/S0 | ✓ | ✓ |
| Pilot [1] | C1/S1 | ✓ | ✓ |
| Pilot [2] | C2/S2 | ✓ | ✓ |



<LTE Mode>

LTE Target MPR level

The device implements maximum power reduction per 3GPP 36.101 requirements where the MPR target is as below table. The MPR settings are implemented configured into firmware and cannot be disabled by the end user or LTE carrier network.

Modulation	Channel bandwidth / Transmission bandwidth configuration [RB]						MPR	3GPP
	1.4	3.0	5	10	15	20	Target	MPR
	MHz	MHz	MHz	MHz	MHz	MHz	(dB)	(dB)
QPSK	> 5	> 4	> 8	> 12	> 16	> 18	1	≤ 1
16 QAM	≤ 5	≤ 4	≤ 8	≤ 12	≤ 16	≤ 18	1	≤ 1
64 QAM	> 5	> 4	> 8	> 12	> 16	> 18	2	≤ 2

Note: The measurement result showed some difference from the target MPR level, due to expected 0.5dB measurement tolerance

LTE Bands

LTE Bands	Channel bandwidth / Transmission bandwidth configuration [RB]					
	1.4	3.0	5	10	15	20
	MHz	MHz	MHz	MHz	MHz	MHz
2	√	√	√	√	√	√
4	√	√	√	√	√	√
5	√	√	√	√	N/A	N/A
7	N/A	N/A	√	√	√	√
13	N/A	N/A	√	√	N/A	N/A
26	√	√	√	√	√	N/A
38	N/A	N/A	√	√	√	√
41	N/A	N/A	√	√	√	√
66	√	√	√	√	√	√

Note:

1. Per KDB 941225 D05v02r05, when a properly configured base station simulator is used for the SAR and power measurements, spectrum plots for each RB allocation and offset configuration is not required.
2. Per KDB 941225 D05v02r05, start with the largest channel bandwidth and measure SAR for QPSK with 1 RB allocation, using the RB offset and required test channel combination with the highest maximum output power for RB offsets at the upper edge, middle and lower edge of each required test channel.
3. Per KDB 941225 D05v02r05, 50% RB allocation for QPSK SAR testing follows 1RB QPSK allocation procedure.
4. Per KDB 941225 D05v02r05, for QPSK with 100% RB allocation, SAR is not required when the highest maximum output power for 100 % RB allocation is less than the highest maximum output



power in 50% and 1 RB allocations and the highest reported SAR for 1 RB and 50% RB allocation are ≤ 0.8 W/kg. Otherwise, SAR is measured for the highest output power channel; and if the reported SAR is > 1.45 W/kg, the remaining required test channels must also be tested.

5. Per KDB 941225 D05v02r05, 16QAM/64QAM output power for each RB allocation configuration is $>$ not $\frac{1}{2}$ dB higher than the same configuration in QPSK and the reported SAR for the QPSK configuration is ≤ 1.45 W/kg; Per KDB941225 D05v02r05, 16QAM/64QAM SAR testing is not required.
6. Per KDB 941225 D05v02r05, smaller bandwidth output power for each RB allocation configuration is $>$ not $\frac{1}{2}$ Db higher than the same configuration in the largest supported bandwidth, and the reported SAR for the largest supported band width is ≤ 1.45 W/kg; Per KDB 941225 D05v02r05, smaller bandwidth SAR testing is not required.
7. For LTE B4 / B5 / B7 / B17 the maximum bandwidth does not support three non-overlapping channels, per KDB941225 D05v02r05, when a device supports overlapping channel assignment in a channel bandwidth configuration, the middle channel of the group of overlapping channels should be selected for testing.
8. LTE band 2 / 12 SAR test was covered by Band 25 / 17; according to April 2015 TCB workshop, SAR test for overlapping LTE bands can be reduced if
 - a. The maximum output power, including tolerance, for the smaller band is \leq the larger band to qualify for the SAR test exclusion.
 - b. The channel bandwidth and other operating parameters for the smaller band are fully supported by the larger band.
9. According to 2017 TCB workshop, for 64 QAM and 16 QAM should be verified by checking the signal constellation with a call box to avoid incorrect maximum power levels due to MPR and other requirements associated with signal modulation, and the following figure is taken from the "Fundamental Measurement >> Modulation Analysis >> constellation" mode of the device connect to the CMW500 base station, therefore, the device 64QAM and 16QAM signal modulation are correct. Identify if Maximum Power Reduction (MPR) is optional or mandatory, i.e. built-in by design: only mandatory MPR may be considered during SAR testing, when the maximum output power is permanently limited by the MPR implemented within the UE; and only for the applicable RB (resource block) configurations specified in LTE standards: b) A-MPR (additional MPR) must be disabled.
10. Per KDB 447498 D01v06, the reported SAR is the measured SAR value adjusted for maximum tune-up tolerance.
 - a. Tune-up scaling Factor = tune-up limit power (mW) / EUT RF power (mW), where tune-up limit is the maximum rated power among all production units.
 - b. For SAR testing of WLAN signal with non-100% duty cycle, the measured SAR is scaled-up by the duty cycle scaling factor which is equal to "1/(duty cycle)"
 - c. For WWAN: Reported SAR(W/kg)= Measured SAR(W/kg)*Tune-up Scaling Factor
 - d. For WLAN/Bluetooth: Reported SAR(W/kg)= Measured SAR(W/kg)* Duty Cycle scaling



factor * Tune-up scaling factor

- e. For TDD LTE SAR measurement, the duty cycle 1:1.59 (62.9 %) was used perform testing and considering the theoretical duty cycle of 63.3% for extended cyclic prefix in the uplink, and the theoretical duty cycle of 62.9% for normal cyclic prefix in uplink, a scaling factor of extended cyclic prefix $63.3\%/62.9\% = 1.006$ is applied to scale-up the measured SAR result. The Reported TDD LTE SAR = measured SAR (W/kg)* Tune-up Scaling Factor* scaling factor for extended cyclic prefix.
11. Per KDB 447498 D01v06, for each exposure position, testing of other required channels within the operating mode of a frequency band is not required when the reported 1-g or 10-g SAR for the mid-band or highest output power channel is: ≤ 0.8 W/kg or 2.0 W/kg, for 1-g or 10-g respectively, when the transmission band is ≤ 100 MHz ≤ 0.6 W/kg or 1.5 W/kg, for 1-g or 10-g respectively, when the transmission band is between 100 MHz and 200 MHz ≤ 0.4 W/kg or 1.0 W/kg, for 1-g or 10-g respectively, when the transmission band is ≥ 200 MHz
12. Per KDB 865664 D01v01r04, for each frequency band, repeated SAR measurement is required only when the measured SAR is ≥ 0.8 W/kg.
13. Per KDB 648474 D04v01r03, when the reported SAR for a body-worn accessory measured without a headset connected to the handset is ≤ 1.2 W/kg, SAR testing with a headset connected to the handset is not required.

<WLAN 2.4GHz>

1. SAR is measured for 2.4 GHz 802.11b DSSS using either the fixed test position or, when applicable, the initial test position procedure. SAR test reduction is determined according to the following:
 - a. When the reported SAR of the highest measured maximum output power channel for the exposure configuration is ≤ 0.8 W/kg, no further SAR testing is required for 802.11b DSSS in that exposure configuration.
 - b. When the reported SAR is > 0.8 W/kg, SAR is required for that position using the next highest measured output power channel. When any reported SAR is > 1.2 W/kg, SAR is required for the third channel; i.e., all channels require testing.
2. 2.4 GHz 802.11 g/n OFDM are additionally evaluated for SAR if the highest reported SAR for 802.11b, adjusted by the ratio of the OFDM to DSSS specified maximum output power, is > 1.2 W/kg. When SAR is required for OFDM modes in 2.4 GHz band, the Initial Test configuration Procedures should be followed.
3. For held-to-ear and hotspot operations, the initial test position procedures were applied. The test position with the highest extrapolated peak SAR will be used as the initial test position. When reported SAR for the initial test position is ≤ 0.4 W/kg, no additional testing for the remaining test positions was required. Otherwise, SAR is evaluated at the subsequent highest peak SAR positions until the reported SAR result is ≤ 0.8 W/kg or all test positions are measured.
4. Justification for test configurations for WLAN per KDB Publication 248227 D02DR02-41929 for



2.4 GHz WI-FI single transmission chain operations, the highest measured maximum output power channel for DSSS was selected for SAR measurement. SAR for OFDM modes (2.4 GHz 802.11g/n) was not required due to the maximum allowed powers and the highest reported DSSS SAR.

5. A fixed level power reduction is applied for WiFi when handset operates "held to the body" condition or "held to the ear" condition, the power reduction triggered by audio receiver detection and call establish status.
6. Per KDB 248227 D01v02r02, In the 2.4 GHz band, separate SAR procedures are applied to DSSS and OFDM configurations to simplify DSSS test requirements. SAR is not required for the following 2.4 GHz OFDM conditions:
 - a. When KDB Publication 447498 SAR test exclusion applies to the OFDM configuration.
 - b. When the highest reported SAR for DSSS is adjusted by the ratio of OFDM to DSSS specified maximum output power and the adjusted SAR is ≤ 1.2 W/kg.

<WLAN 5GHz>

A) U-NII-1 and U-NII-2A Bands

For devices that operate in only one of the U-NII-1 and U-NII-2A bands, the normally required SAR procedures for OFDM configurations are applied. For devices that operate in both U-NII bands using the same transmitter and antenna(s), SAR test reduction is determined according to the following:

1. When the same maximum output power is specified for both bands, begin SAR measurement in U-NII-2A band by applying the OFDM SAR requirements. If the highest reported SAR for a test configuration is ≤ 1.2 W/kg, SAR is not required for U-NII-1 band for that configuration (802.11 mode and exposure condition); otherwise, both bands are tested independently for SAR.
2. When different maximum output power is specified for the bands, begin SAR measurement in the band with higher specified maximum output power. The highest reported SAR for the tested configuration is adjusted by the ratio of lower to higher specified maximum output power for the two bands. When the adjusted SAR is ≤ 1.2 W/kg, SAR is not required for the band with lower maximum output power in that test configuration; otherwise, both bands are tested independently for SAR.
3. The two U-NII bands may be aggregated to support a 160 MHz channel on channel number 50.
4. Without additional testing, the maximum output power for this is limited to the lower of the maximum output power certified for the two bands. When SAR measurement is required for at least one of the bands and the highest reported SAR adjusted by the ratio of specified maximum output power of aggregated to standalone band is > 1.2 W/kg, SAR is required for the 160 MHz channel. This procedure does not apply to an aggregated band with maximum output higher than the standalone band(s); the aggregated band must be tested independently for SAR. SAR is not required when the 160 MHz channel is operating at a reduced maximum power and also qualifies for SAR test exclusion.

B) U-NII-2C and U-NII-3 Bands



The frequency range covered by these bands is 380 MHz (5.47 – 5.85 GHz), which requires a minimum of at least two SAR probe calibration frequency points to support SAR measurements. when Terminal Doppler Weather Radar (TDWR) restriction applies, all channels that operate at 5.60 – 5.65 GHz must be included to apply the SAR test reduction and measurement procedures. When the same transmitter and antenna(s) are used for U-NII-2C band and U-NII-3 band or 5.8 GHz band of §15.247, the bands may be aggregated to enable additional channels with 20, 40 or 80 MHz bandwidth to span across the band gap, as illustrated in Appendix B. The maximum output power for the additional band gap channels is limited to the lower of those certified for the bands. Unless band gap channels are permanently disabled, they must be considered for SAR testing. The frequency range covered by these bands is 380 MHz (5.47 – 5.85 GHz), which requires a minimum of at least two SAR probe calibration frequency points to support SAR measurements. To maintain SAR measurement accuracy and to facilitate test reduction, the channels in U-NII-2C band above 5.65 GHz may be grouped with the 5.8 GHz channels in U-NII-3 or §15.247 band to enable two SAR probe calibration frequency points to cover the bands, including the band gap channels. When band gap channels are supported and the bands are not aggregated for SAR testing, band gap channels must be considered independently in each band according to the normally required OFDM SAR measurement and probe calibration frequency points requirements.

C) OFDM Transmission Mode SAR Test Configuration and Channel Selection Requirements

The initial test configuration for 5 GHz OFDM transmission modes is determined by the 802.11 configuration with the highest maximum output power specified for production units, including tune-up tolerance, in each standalone and aggregated frequency band. SAR for the initial test configuration is measured using the highest maximum output power channel determined by the default power measurement procedures. When multiple configurations in a frequency band have the same specified maximum output power, the initial test configuration is determined according to the following steps applied sequentially.

1. The largest channel bandwidth configuration is selected among the multiple configurations with the same specified maximum output power.
2. If multiple configurations have the same specified maximum output power and largest channel bandwidth, the lowest order modulation among the largest channel bandwidth configurations is selected.
3. If multiple configurations have the same specified maximum output power, largest channel bandwidth and lowest order modulation, the lowest data rate configuration among these configurations is selected.
4. When multiple transmission modes (802.11a/g/n/ac) have the same specified maximum output power, largest channel bandwidth, lowest order modulation and lowest data rate, the lowest order 802.11 mode is selected; i.e., 802.11a is chosen over 802.11n then 802.11ac or 802.11g is chosen over 802.11n. After an initial test configuration is determined, if multiple test channels have the same measured maximum output power, the channel chosen for SAR measurement is



determined according to the following. These channel selection procedures apply to both the initial test configuration and subsequent test configuration(s), with respect to the default power measurement procedures or additional power measurements required for further SAR test reduction. The same procedures also apply to subsequent highest output power channel(s) selection.

5. The channel closest to mid-band frequency is selected for SAR measurement.
6. For channels with equal separation from mid-band frequency; for example, high and low channels or two mid-band channels, the higher frequency (number) channel is selected for SAR measurement.

D) SAR Test Requirements for OFDM configurations

When SAR measurement is required for 802.11 a/n/ac OFDM configurations, each standalone and frequency aggregated band is considered separately for SAR test reduction. When the same transmitter and antenna(s) are used for U-NII-1 and U-NII-2A bands, additional SAR test reduction V applies. When band gap channels between U-NII-2C band and 5.8 GHz U-NII-3 or §15.247 band are supported, the highest maximum output power transmission mode configuration and maximum output power channel across the bands must be used to determine SAR test reduction, according to the initial test configuration and subsequent test configuration requirements. In applying the initial test configuration and subsequent test configuration procedures, the 802.11 transmission configuration with the highest specified maximum output power and the channel within a test configuration with the highest measured maximum output power should be clearly distinguished to apply the procedures.

13. Conducted Power List

Remark: The output power of GSM/WCDMA/LTE/WLAN/Bluetooth refers to the annex E of this report.

14. Hotspot Mode Evaluation Procedure

➤ EUT Antenna Location

The location of antenna was recorded in annex B
ANT 0: TX/PRX: GSM 850/1900, WCDMA Band II/IV/V, LTE Band 2/4/5/7/13/26/38/41/66
ANT 1: TX/DRX: GSM 850/1900, WCDMA Band II/IV/V, LTE Band 2/4/5/7/13/26/38/41/66
ANT 3: GPS
ANT 4: WLAN 2.4GHz/5 GHz, Bluetooth
ANT 5: NFC

➤ EUT Antenna Distance

Antenna Location	Front	Back	Left	Right	Top	Bottom
ANT 0	<5mm	<5mm	<5mm	<5mm	>25mm	<5mm
ANT 1	<5mm	<5mm	<5mm	>25mm	<5mm	>25mm
ANT 4	<5mm	<5mm	>25mm	<25mm	<5mm	>25mm

➤ Hotspot Evaluation

Assessment	Hotspot Side for SAR Test Distance: 10mm					
Antennas	Front	Back	Left	Right	Top	Bottom
ANT 0	Yes	Yes	Yes	Yes	No	Yes
ANT 1	Yes	Yes	Yes	No	Yes	No
ANT 4	Yes	Yes	No	Yes	Yes	No

Note :

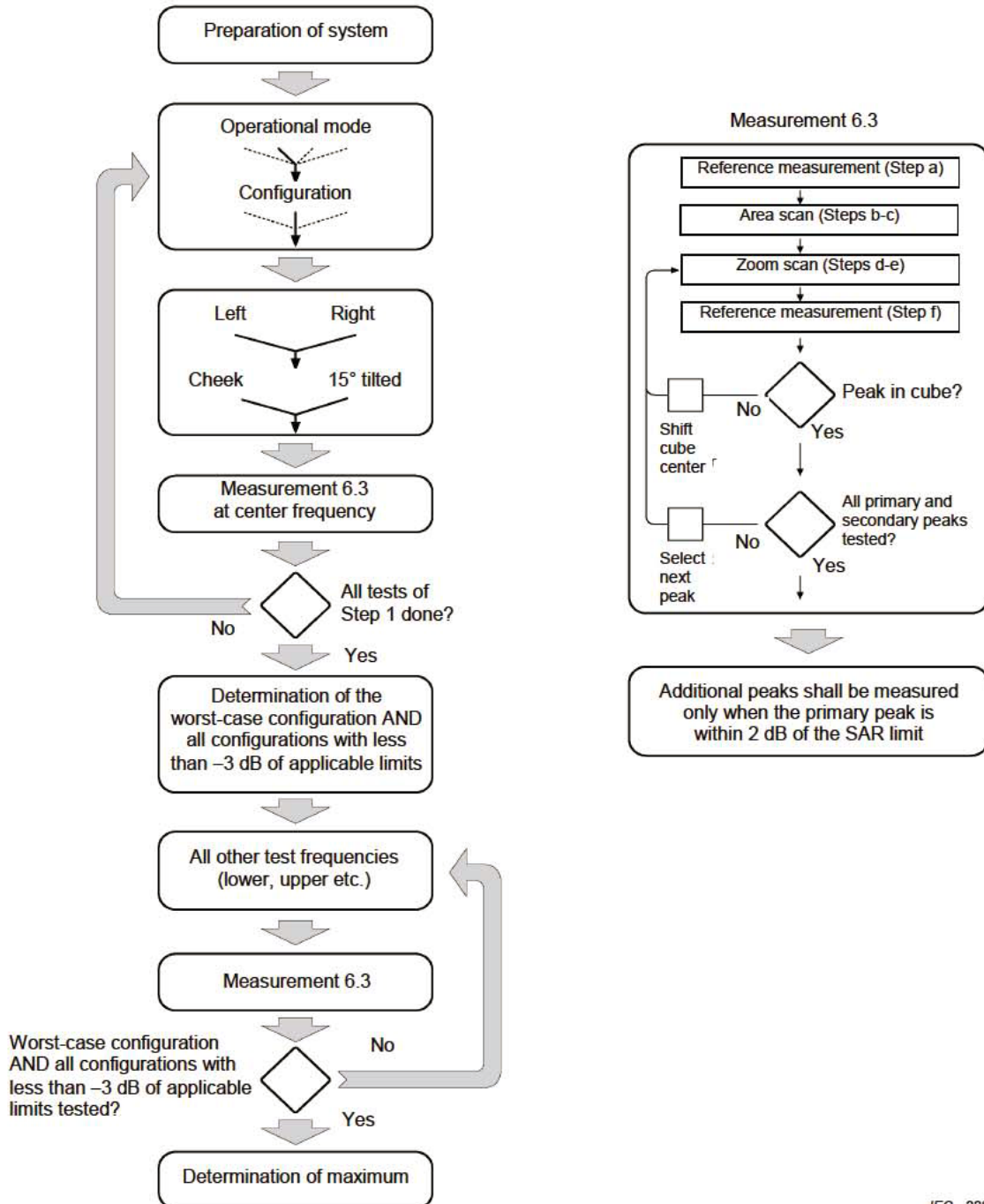


REPORT No.: SZ24090043S01

1. The SAR evaluation procedures for Portable Devices with Wireless Router function is according to KDB 941225 D06 Hotspot SAR v02r01.
2. Head/Body-worn/Hotspot mode SAR assessments are required.
3. Referring to KDB 941225 D06, when the overall device length and width are $\geq 9\text{cm} \times 5\text{cm}$, the test distance is 10 mm. SAR must be measured for all sides and surfaces with a transmitting antenna located within 25mm from that surface or edge.

15. Block Diagram of the Tests to be Performed

15.1. Head



IEC 228/05

15.2. Body

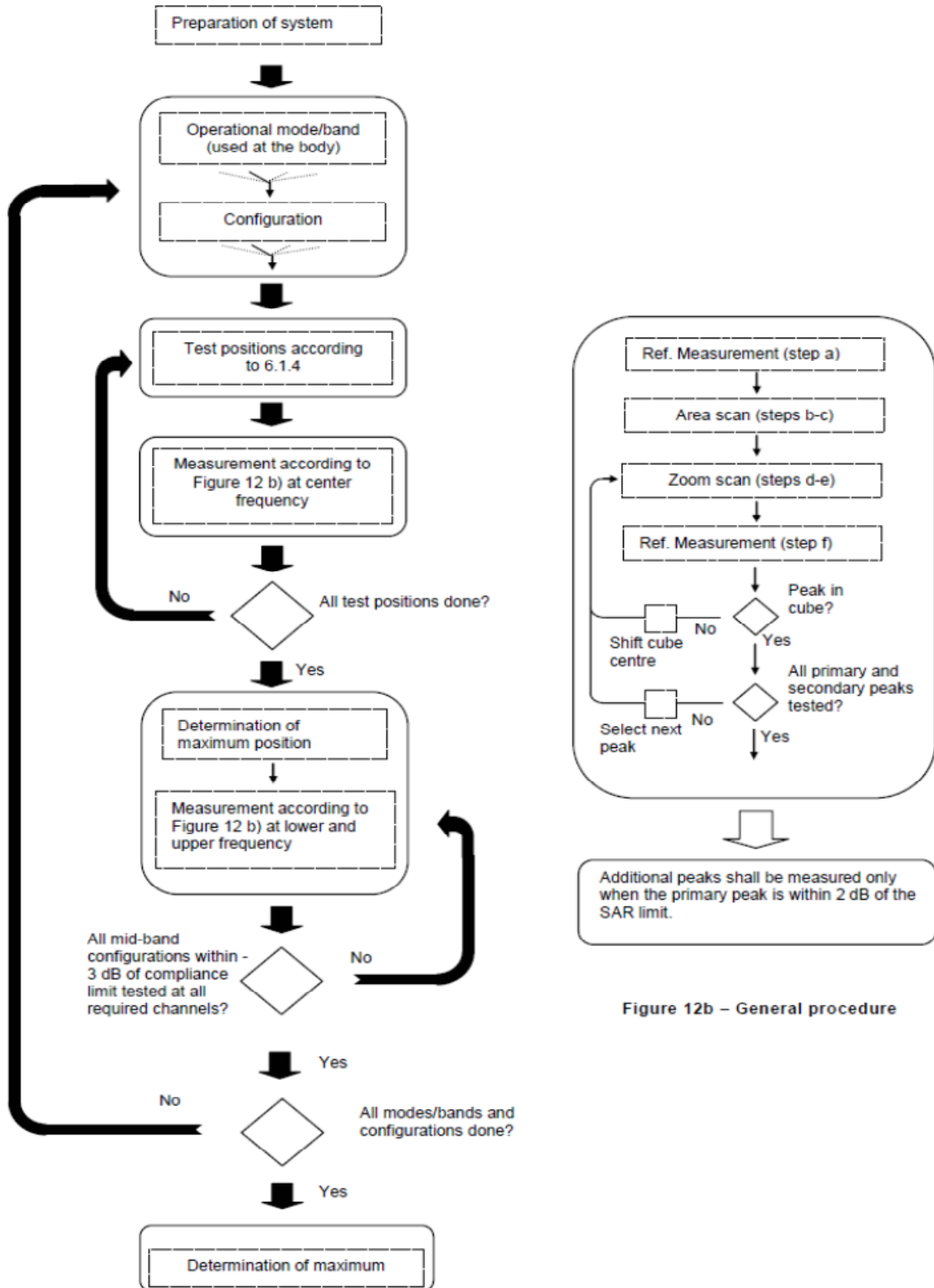


Figure 12b – General procedure

16. Test Results List

16.1. Test Guidance

1. Per KDB 447498 D01v06, the reported SAR is the measured SAR value adjusted for maximum tune-up tolerance.
 - a. Tune-up scaling Factor = tune-up limit power (mW) / EUT RF power (mW), where tune-up limit is the maximum rated power among all production units.
 - b. For SAR testing of WLAN signal with non-100% duty cycle, the measured SAR is scaled-up by the duty cycle scaling factor which is equal to "1 / (duty cycle)".
 - c. For WWAN: Reported SAR (W/kg) = Measured SAR (W/kg) * Tune-up Scaling Factor.
 - d. For WLAN/Bluetooth: Reported SAR (W/kg) = Measured SAR (W/kg) * Duty Cycle scaling factor * Tune-up scaling factor.
2. Per KDB 447498 D01v06, for each exposure position, testing of other required channels within the operating mode of a frequency band is not required when the *reported* 1-g or 10-g SAR for the mid-band or highest output power channel is:
 - a. ≤ 0.8 W/kg or 2.0 W/kg, for 1-g or 10-g respectively, when the transmission band is ≤ 100 MHz
 - b. ≤ 0.6 W/kg or 1.5 W/kg, for 1-g or 10-g respectively, when the transmission band is between 100 MHz and 200 MHz
 - c. ≤ 0.4 W/kg or 1.0 W/kg, for 1-g or 10-g respectively, when the transmission band is ≥ 200 MHz
3. Per KDB 865664 D01v01r04, for each frequency band, repeated SAR measurement is required only when the measured SAR is ≥ 0.8 W/kg.
4. Per KDB 648474 D04v01r03, when the reported SAR for a body-worn accessory measured without a headset connected to the handset is ≤ 1.2 W/kg, SAR testing with a headset connected to the handset is not required.
5. Per KDB648474 D04v01r03, for smart phones with a display diagonal dimension > 15.0 cm or an overall diagonal dimension > 16.0 cm, when hotspot mode applies, 10-g extremity SAR is required only for the surfaces and edges with hotspot mode 1-g reported SAR > 1.2 W/kg, however, when power reduction applies to hotspot mode the measured SAR must be scaled to the maximum output power, including tolerance, allowed for tablet modes to compare with the 1.2 W/kg SAR test reduction threshold.
6. Per KDB248227 D01v02r02, a Wi-Fi device must be configured to transmit continuously at the required data rate, channel bandwidth and signal modulation, using the highest transmission duty factor supported by the test mode tools for SAR measurement. The test frequencies established using test mode must correspond to the actual channel frequencies required for operations in the U.S. When 802.11 frame gaps are accounted for in the transmission, a maximum transmission duty factor of 92 - 96% is typically achievable in most test mode configurations. A minimum transmission duty factor of 85% is required to avoid certain hardware and device implementation issues related to wide range SAR scaling. In addition, a periodic



transmission duty factor is required for current generation SAR systems to measure SAR correctly. Unless it is permitted by specific KDB procedures or continuous transmission is specifically restricted by the device, the reported SAR must be scaled to 100% transmission duty factor to determine compliance at the maximum tune-up tolerance limit. When a device is not capable of sustaining continuous transmission or the output can become nonlinear, and it is limited by hardware design and unable to transmit at higher than 85% duty factor, a periodic duty factor within 15% of the maximum duty factor the device is capable of transmitting should be used. The reported SAR must be scaled to the maximum transmission duty factor to determine compliance. Descriptions of the procedures applied to establish the specific duty factor used for SAR testing are required in SAR reports to support the test results.

7. The maximum power of NFC is less than 1mW per the manual, therefore it is not required for RF exposure.
8. This device will select corresponding conducted power automatically in different using conditions.
 - a. TX power switching between upper and lower antennas is realized through DPDT switch.
 - b. The power back off of head and body SAR is realized by monitoring the opening and closing of receiver (the receiver opening and calls the power back off parameter of head SAR, and the receiver closed and calls the power back off parameter of body SAR).
 - c. Single and simultaneous transmission of cellular SAR: during cellular operation, it is realized by monitoring WiFi connection and non connection (WiFi connection, call the power back off parameter of cellular SAR simultaneous transmission, WiFi disconnection, call the power back off parameter of single transmission SAR).
 - d. Single and simultaneous transmission of WiFi SAR: when WiFi is connected, it is realized by monitoring whether the RF modem works or not (when the modem works, call the WiFi SAR simultaneous transmission SAR power back off parameter; when the modem does not work, call the WiFi SAR single transmission SAR power back off parameter).
9. The power level applied as below:

Transmission Condition	Wireless System	Antenna	Head	Body
Standalone	GSM850	ANT 0	Full Power	Full Power
		ANT 1	Full Power	Full Power
	GSM1900	ANT 0	Full Power	Full Power
		ANT 1	Reduced Power Level 1	Reduced Power Level 4
	WCDMA II	ANT 0	Full Power	Full Power
		ANT 1	Reduced Power Level 1	Reduced Power Level 4
	WCDMA IV	ANT 0	Full Power	Reduced Power Level 3
		ANT 1	Reduced Power Level 1	Reduced Power Level 4
	WCDMA V	ANT 0	Full Power	Full Power



	LTE Band 2	ANT 1	Full Power	Full Power
		ANT 0	Full Power	Full Power
	LTE Band 5	ANT 1	Reduced Power Level 1	Reduced Power Level 4
		ANT 0	Full Power	Full Power
	LTE Band 7	ANT 1	Full Power	Full Power
		ANT 0	Full Power	Reduced Power Level 3
	LTE Band 13	ANT 1	Reduced Power Level 1	Reduced Power Level 4
		ANT 0	Full Power	Full Power
	LTE Band 26	ANT 1	Full Power	Full Power
		ANT 0	Full Power	Full Power
	LTE Band 38	ANT 1	Full Power	Full Power
		ANT 0	Reduced Power Level 1	Full Power
	LTE Band 41	ANT 1	Full Power	Full Power
		ANT 0	Reduced Power Level 1	Full Power
	LTE Band 66	ANT 1	Full Power	Reduced Power Level 3
		ANT 0	Reduced Power Level 1	Reduced Power Level 4
	WLAN2.4G	ANT 4	Full Power	Full Power
	WLAN5.2G	ANT 4	Full Power	Full Power
WLAN5.3G	ANT 4	Reduced Power Level 2	Full Power	
WLAN5.5G	ANT 4	Full Power	Full Power	
WLAN5.8G	ANT 4	Full Power	Full Power	
Bluetooth	ANT 4	Full Power	Full Power	

Transmission Condition	Wireless System	Antenna	Head	Body
Simultaneous	GSM850	ANT 0	Full Power	Full Power
		ANT 1	Full Power	Full Power
	GSM1900	ANT 0	Full Power	Full Power
		ANT 1	Reduced Power Level 1	Reduced Power Level 4
	WCDMA II	ANT 0	Full Power	Full Power
		ANT 1	Reduced Power Level 1	Reduced Power Level 4
	WCDMA IV	ANT 0	Full Power	Reduced Power Level 3
		ANT 1	Reduced Power Level 1	Reduced Power Level 4
	WCDMA V	ANT 0	Full Power	Full Power



		ANT 1	Full Power	Full Power
LTE Band 2		ANT 0	Full Power	Full Power
		ANT 1	Reduced Power Level 1	Reduced Power Level 4
LTE Band 5		ANT 0	Full Power	Full Power
		ANT 1	Full Power	Full Power
LTE Band 7		ANT 0	Full Power	Reduced Power Level 3
		ANT 1	Reduced Power Level 1	Reduced Power Level 4
LTE Band 13		ANT 0	Full Power	Full Power
		ANT 1	Full Power	Full Power
LTE Band 26		ANT 0	Full Power	Full Power
		ANT 1	Full Power	Full Power
LTE Band 38		ANT 0	Full Power	Full Power
		ANT 1	Reduced Power Level 1	Full Power
LTE Band 41		ANT 0	Full Power	Full Power
		ANT 1	Reduced Power Level 1	Full Power
LTE Band 66		ANT 0	Full Power	Reduced Power Level 3
		ANT 1	Reduced Power Level 1	Reduced Power Level 4
WLAN2.4G		ANT 4	Full Power	Full Power
WLAN5.2G		ANT 4	Full Power	Full Power
WLAN5.3G		ANT 4	Reduced Power Level 5	Full Power
WLAN5.5G		ANT 4	Full Power	Full Power
WLAN5.8G		ANT 4	Full Power	Reduced Power Level 6
Bluetooth		ANT 4	Full Power	Full Power



16.2. Head SAR Data

➤ GSM Head SAR

Plot No.	Band/Mode	Test Position	CH.	Ave. Power (dBm)	Tune-up Limit (dBm)	Tune-up Scaling Factor	Meas. SAR _{1g} (W/kg)	Reported SAR _{1g} (W/kg)
Full Power (ANT 1)								
1#	GPRS 850(4 TX slots)	Right Cheek	189	27.17	28.00	1.211	0.795	0.962
	GPRS 850(4 TX slots)	Right Tilt	189	27.17	28.00	1.211	0.687	0.832
	GPRS 850(4 TX slots)	Left Cheek	189	27.17	28.00	1.211	0.524	0.634
	GPRS 850(4 TX slots)	Left Tilt	189	27.17	28.00	1.211	0.470	0.569
	GPRS 850(4 TX slots)	Right Cheek	128	27.05	28.00	1.245	0.761	0.947
	GPRS 850(4 TX slots)	Right Cheek	251	27.16	28.00	1.213	0.759	0.921
Full Power (ANT 0)								
	GPRS 850(4 TX slots)	Right Cheek	189	27.17	28.00	1.211	0.161	0.195
	GPRS 850(4 TX slots)	Right Tilt	189	27.17	28.00	1.211	0.076	0.092
	GPRS 850(4 TX slots)	Left Cheek	189	27.17	28.00	1.211	0.138	0.167
	GPRS 850(4 TX slots)	Left Tilt	189	27.17	28.00	1.211	0.066	0.080
Reduced Power Level 1 (ANT 1)								
	GPRS 1900(4 TX slots)	Right Cheek	810	20.80	22.00	1.318	0.761	1.003
2#	GPRS 1900(4 TX slots)	Right Tilt	810	20.80	22.00	1.318	0.850	1.121
	GPRS 1900(4 TX slots)	Left Cheek	810	20.80	22.00	1.318	0.335	0.442
	GPRS 1900(4 TX slots)	Left Tilt	810	20.80	22.00	1.318	0.393	0.518
	GPRS 1900(4 TX slots)	Right Cheek	512	20.74	22.00	1.337	0.719	0.961
	GPRS 1900(4 TX slots)	Right Cheek	661	20.78	22.00	1.324	0.745	0.987
	GPRS 1900(4 TX slots)	Right Tilt	512	20.74	22.00	1.337	0.801	1.071
	GPRS 1900(4 TX slots)	Right Tilt	661	20.78	22.00	1.324	0.826	1.094
Full Power (ANT 0)								
	GPRS 1900(4 TX slots)	Right Cheek	810	24.10	25.00	1.230	0.032	0.040
	GPRS 1900(4 TX slots)	Right Tilt	810	24.10	25.00	1.230	0.027	0.033
	GPRS 1900(4 TX slots)	Left Cheek	810	24.10	25.00	1.230	0.082	0.100
	GPRS 1900(4 TX slots)	Left Tilt	810	24.10	25.00	1.230	0.028	0.035



➤ **WCDMA Head SAR**

Plot No.	Band/Mode	Test Position	CH.	Ave. Power (dBm)	Tune-up Limit (dBm)	Tune-up Scaling Factor	Meas. SAR _{1g} (W/kg)	Reported SAR _{1g} (W/kg)
Reduced Power Level 1 (ANT 1)								
	Band II/RMC 12.2Kbps	Right Cheek	9400	17.58	18.50	1.236	0.547	0.676
	Band II/RMC 12.2Kbps	Right Tilt	9400	17.58	18.50	1.236	0.747	0.923
	Band II/RMC 12.2Kbps	Left Cheek	9400	17.58	18.50	1.236	0.314	0.388
	Band II/RMC 12.2Kbps	Left Tilt	9400	17.58	18.50	1.236	0.369	0.456
	Band II/RMC 12.2Kbps	Right Tilt	9262	17.50	18.50	1.259	0.672	0.846
3#	Band II/RMC 12.2Kbps	Right Tilt	9538	17.55	18.50	1.245	0.834	1.038
Full Power (ANT 0)								
	Band II/RMC 12.2Kbps	Right Cheek	9400	22.88	24.00	1.294	0.059	0.077
	Band II/RMC 12.2Kbps	Right Tilt	9400	22.88	24.00	1.294	0.042	0.054
	Band II/RMC 12.2Kbps	Left Cheek	9400	22.88	24.00	1.294	0.106	0.137
	Band II/RMC 12.2Kbps	Left Tilt	9400	22.88	24.00	1.294	0.044	0.057
Reduced Power Level 1 (ANT 1)								
	Band IV/RMC 12.2Kbps	Right Cheek	1413	17.80	18.50	1.175	0.446	0.524
	Band IV/RMC 12.2Kbps	Right Tilt	1413	17.80	18.50	1.175	0.794	0.933
	Band IV/RMC 12.2Kbps	Left Cheek	1413	17.80	18.50	1.175	0.430	0.505
	Band IV/RMC 12.2Kbps	Left Tilt	1413	17.80	18.50	1.175	0.420	0.493
4#	Band IV/RMC 12.2Kbps	Right Tilt	1312	17.72	18.50	1.197	0.808	0.967
	Band IV/RMC 12.2Kbps	Right Tilt	1513	17.76	18.50	1.186	0.799	0.947
Full Power (ANT 0)								
	Band IV/RMC 12.2Kbps	Right Cheek	1413	23.00	24.00	1.259	0.141	0.178
	Band IV/RMC 12.2Kbps	Right Tilt	1413	23.00	24.00	1.259	0.045	0.057
	Band IV/RMC 12.2Kbps	Left Cheek	1413	23.00	24.00	1.259	0.077	0.097
	Band IV/RMC 12.2Kbps	Left Tilt	1413	23.00	24.00	1.259	0.059	0.074
Full Power (ANT 1)								
5#	Band V/RMC 12.2Kbps	Right Cheek	4182	23.40	24.50	1.288	0.923	1.189
	Band V/RMC 12.2Kbps	Right Tilt	4182	23.40	24.50	1.288	0.740	0.953
	Band V/RMC 12.2Kbps	Left Cheek	4182	23.40	24.50	1.288	0.449	0.578
	Band V/RMC 12.2Kbps	Left Tilt	4182	23.40	24.50	1.288	0.481	0.620
	Band V/RMC 12.2Kbps	Right Cheek	4132	23.34	24.50	1.306	0.664	0.867
	Band V/RMC 12.2Kbps	Right Cheek	4233	23.37	24.50	1.297	0.805	1.044
	Band V/RMC 12.2Kbps	Right Tilt	4132	23.34	24.50	1.306	0.681	0.890
	Band V/RMC 12.2Kbps	Right Tilt	4233	23.37	24.50	1.297	0.757	0.982
Full Power (ANT 0)								
	Band V/RMC 12.2Kbps	Right Cheek	4182	23.40	24.50	1.288	0.163	0.210



	Band V/RMC 12.2Kbps	Right Tilt	4182	23.40	24.50	1.288	0.062	0.080
	Band V/RMC 12.2Kbps	Left Cheek	4182	23.40	24.50	1.288	0.129	0.166
	Band V/RMC 12.2Kbps	Left Tilt	4182	23.40	24.50	1.288	0.061	0.078

➤ **LTE QPSK Head SAR**

Plot No.	Band/Mode	Test Position	CH.	Ave. Power (dBm)	Tune-up Limit (dBm)	Tune-up Scaling Factor	Meas. SAR _{1g} (W/kg)	Reported SAR _{1g} (W/kg)
Reduced Power Level 1 (ANT 1)								
	LTE Band 2/1RB#0 20M	Right Cheek	18900	17.95	19.00	1.274	0.471	0.600
	LTE Band 2/1RB#0 20M	Right Tilt	18900	17.95	19.00	1.274	0.732	0.932
	LTE Band 2/1RB#0 20M	Left Cheek	18900	17.95	19.00	1.274	0.119	0.152
	LTE Band 2/1RB#0 20M	Left Tilt	18900	17.95	19.00	1.274	0.357	0.455
	LTE Band 2/1RB#0 20M	Right Tilt	18700	17.88	19.00	1.294	0.747	0.967
6#	LTE Band 2/1RB#0 20M	Right Tilt	19100	17.86	19.00	1.300	0.750	0.975
	LTE Band 2/50RB#0 20M	Right Cheek	18900	17.05	18.00	1.245	0.498	0.620
	LTE Band 2/50RB#0 20M	Right Tilt	18900	17.05	18.00	1.245	0.776	0.966
	LTE Band 2/50RB#0 20M	Left Cheek	18900	17.05	18.00	1.245	0.111	0.138
	LTE Band 2/50RB#0 20M	Left Tilt	18900	17.05	18.00	1.245	0.376	0.468
	LTE Band 2/50RB#0 20M	Right Tilt	18700	16.98	18.00	1.265	0.713	0.902
	LTE Band 2/50RB#0 20M	Right Tilt	19100	17.00	18.00	1.259	0.739	0.930
	LTE Band 2/100RB#0 20M	Right Tilt	18900	16.95	18.00	1.274	0.681	0.867
Full Power (ANT 0)								
	LTE Band 2/1RB#0 20M	Right Cheek	18900	22.25	23.50	1.334	0.045	0.060
	LTE Band 2/1RB#0 20M	Right Tilt	18900	22.25	23.50	1.334	0.027	0.037
	LTE Band 2/1RB#0 20M	Left Cheek	18900	22.25	23.50	1.334	0.079	0.105
	LTE Band 2/1RB#0 20M	Left Tilt	18900	22.25	23.50	1.334	0.049	0.065
	LTE Band 2/50RB#0 20M	Right Cheek	18900	21.35	22.50	1.303	0.042	0.054
	LTE Band 2/50RB#0 20M	Right Tilt	18900	21.35	22.50	1.303	0.020	0.026
	LTE Band 2/50RB#0 20M	Left Cheek	18900	21.35	22.50	1.303	0.062	0.081
	LTE Band 2/50RB#0 20M	Left Tilt	18900	21.35	22.50	1.303	0.037	0.048
Full Power (ANT 1)								
7#	LTE Band 5/1RB#0 10M	Right Cheek	20525	23.61	24.50	1.227	0.719	0.883
	LTE Band 5/1RB#0 10M	Right Tilt	20525	23.61	24.50	1.227	0.503	0.617
	LTE Band 5/1RB#0 10M	Left Cheek	20525	23.61	24.50	1.227	0.429	0.527
	LTE Band 5/1RB#0 10M	Left Tilt	20525	23.61	24.50	1.227	0.398	0.489
	LTE Band 5/1RB#0 10M	Right Cheek	20450	23.56	24.50	1.242	0.533	0.662
	LTE Band 5/1RB#0 10M	Right Cheek	20600	23.60	24.50	1.230	0.624	0.768
	LTE Band 5/25RB#0 10M	Right Cheek	20600	22.87	24.00	1.297	0.663	0.860



	LTE Band 5/25RB#0 10M	Right Tilt	20600	22.87	24.00	1.297	0.490	0.636
	LTE Band 5/25RB#0 10M	Left Cheek	20600	22.87	24.00	1.297	0.378	0.490
	LTE Band 5/25RB#0 10M	Left Tilt	20600	22.87	24.00	1.297	0.343	0.445
	LTE Band 5/25RB#0 10M	Right Cheek	20450	22.82	24.00	1.312	0.495	0.650
	LTE Band 5/25RB#0 10M	Right Cheek	20525	22.83	24.00	1.309	0.599	0.784
	LTE Band 5/50RB#0 10M	Right Cheek	20525	22.77	24.00	1.327	0.503	0.668
Full Power (ANT 0)								
	LTE Band 5/1RB#0 10M	Right Cheek	20525	23.61	24.50	1.227	0.245	0.301
	LTE Band 5/1RB#0 10M	Right Tilt	20525	23.61	24.50	1.227	0.152	0.186
	LTE Band 5/1RB#0 10M	Left Cheek	20525	23.61	24.50	1.227	0.195	0.239
	LTE Band 5/1RB#0 10M	Left Tilt	20525	23.61	24.50	1.227	0.150	0.184
	LTE Band 5/25RB#0 10M	Right Cheek	20600	22.87	24.50	1.455	0.217	0.316
	LTE Band 5/25RB#0 10M	Right Tilt	20600	22.87	24.50	1.455	0.148	0.215
	LTE Band 5/25RB#0 10M	Left Cheek	20600	22.87	24.50	1.455	0.177	0.258
	LTE Band 5/25RB#0 10M	Left Tilt	20600	22.87	24.50	1.455	0.139	0.203
Reduced Power Level 1 (ANT 1)								
	LTE Band 7/1RB#0 20M	Right Cheek	20850	17.13	18.00	1.222	0.743	0.908
	LTE Band 7/1RB#0 20M	Right Tilt	20850	17.13	18.00	1.222	0.772	0.943
	LTE Band 7/1RB#0 20M	Left Cheek	20850	17.13	18.00	1.222	0.240	0.293
	LTE Band 7/1RB#0 20M	Left Tilt	20850	17.13	18.00	1.222	0.236	0.288
	LTE Band 7/1RB#0 20M	Right Cheek	21100	17.04	18.00	1.247	0.706	0.881
	LTE Band 7/1RB#0 20M	Right Cheek	21350	17.06	18.00	1.242	0.691	0.858
	LTE Band 7/1RB#0 20M	Right Tilt	21100	17.04	18.00	1.247	0.811	1.012
	LTE Band 7/1RB#0 20M	Right Tilt	21350	17.06	18.00	1.242	0.761	0.945
	LTE Band 7/50RB#0 20M	Right Cheek	20850	16.15	17.00	1.216	0.747	0.908
8#	LTE Band 7/50RB#0 20M	Right Tilt	20850	16.15	17.00	1.216	0.866	1.053
	LTE Band 7/50RB#0 20M	Left Cheek	20850	16.15	17.00	1.216	0.258	0.314
	LTE Band 7/50RB#0 20M	Left Tilt	20850	16.15	17.00	1.216	0.278	0.338
	LTE Band 7/50RB#0 20M	Right Cheek	21100	16.06	17.00	1.242	0.790	0.981
	LTE Band 7/50RB#0 20M	Right Cheek	21350	16.14	17.00	1.219	0.733	0.894
	LTE Band 7/50RB#0 20M	Right Tilt	21100	16.06	17.00	1.242	0.842	1.045
	LTE Band 7/50RB#0 20M	Right Tilt	21350	16.14	17.00	1.219	0.829	1.011
	LTE Band 7/100RB#0 20M	Right Tilt	21100	16.12	17.00	1.225	0.712	0.872
Full Power (ANT 0)								
	LTE Band 7/1RB#0 20M	Right Cheek	20850	22.33	23.50	1.309	0.070	0.092
	LTE Band 7/1RB#0 20M	Right Tilt	20850	22.33	23.50	1.309	0.046	0.060
	LTE Band 7/1RB#0 20M	Left Cheek	20850	22.33	23.50	1.309	0.202	0.264
	LTE Band 7/1RB#0 20M	Left Tilt	20850	22.33	23.50	1.309	0.095	0.124



	LTE Band 7/50RB#0 20M	Right Cheek	20850	21.35	22.50	1.303	0.062	0.081
	LTE Band 7/50RB#0 20M	Right Tilt	20850	21.35	22.50	1.303	0.041	0.053
	LTE Band 7/50RB#0 20M	Left Cheek	20850	21.35	22.50	1.303	0.163	0.212
	LTE Band 7/50RB#0 20M	Left Tilt	20850	21.35	22.50	1.303	0.074	0.096
Full Power (ANT 1)								
9#	LTE Band 13/1RB#0 10M	Right Cheek	23230	23.32	24.50	1.312	0.570	0.748
	LTE Band 13/1RB#0 10M	Right Tilt	23230	23.32	24.50	1.312	0.457	0.600
	LTE Band 13/1RB#0 10M	Left Cheek	23230	23.32	24.50	1.312	0.377	0.495
	LTE Band 13/1RB#0 10M	Left Tilt	23230	23.32	24.50	1.312	0.330	0.433
	LTE Band 13/25RB#0 10M	Right Cheek	23230	22.26	23.50	1.330	0.497	0.661
	LTE Band 13/25RB#0 10M	Right Tilt	23230	22.26	23.50	1.330	0.388	0.516
	LTE Band 13/25RB#0 10M	Left Cheek	23230	22.26	23.50	1.330	0.319	0.424
	LTE Band 13/25RB#0 10M	Left Tilt	23230	22.26	23.50	1.330	0.271	0.361
Full Power (ANT 0)								
	LTE Band 13/1RB#0 10M	Right Cheek	23230	23.32	24.50	1.312	0.122	0.160
	LTE Band 13/1RB#0 10M	Right Tilt	23230	23.32	24.50	1.312	0.058	0.075
	LTE Band 13/1RB#0 10M	Left Cheek	23230	23.32	24.50	1.312	0.076	0.100
	LTE Band 13/1RB#0 10M	Left Tilt	23230	23.32	24.50	1.312	0.047	0.062
	LTE Band 13/25RB#0 10M	Right Cheek	23230	22.26	23.50	1.330	0.097	0.129
	LTE Band 13/25RB#0 10M	Right Tilt	23230	22.26	23.50	1.330	0.046	0.061
	LTE Band 13/25RB#0 10M	Left Cheek	23230	22.26	23.50	1.330	0.062	0.083
	LTE Band 13/25RB#0 10M	Left Tilt	23230	22.26	23.50	1.330	0.038	0.050
Full Power (ANT 1)								
10#	LTE Band 26/1RB#0 15M	Right Cheek	26965	23.22	24.50	1.343	0.797	1.070
	LTE Band 26/1RB#0 15M	Right Tilt	26965	23.22	24.50	1.343	0.593	0.796
	LTE Band 26/1RB#0 15M	Left Cheek	26965	23.22	24.50	1.343	0.519	0.697
	LTE Band 26/1RB#0 15M	Left Tilt	26965	23.22	24.50	1.343	0.488	0.655
	LTE Band 26/1RB#0 15M	Right Cheek	26765	23.14	24.50	1.368	0.623	0.852
	LTE Band 26/1RB#0 15M	Right Cheek	26865	23.19	24.50	1.352	0.714	0.965
	LTE Band 26/36RB#0 15M	Right Cheek	26965	22.58	23.50	1.236	0.753	0.931
	LTE Band 26/36RB#0 15M	Right Tilt	26965	22.58	23.50	1.236	0.580	0.717
	LTE Band 26/36RB#0 15M	Left Cheek	26965	22.58	23.50	1.236	0.468	0.578
	LTE Band 26/36RB#0 15M	Left Tilt	26965	22.58	23.50	1.236	0.433	0.535
	LTE Band 26/36RB#0 15M	Right Cheek	26765	22.52	23.50	1.253	0.585	0.733
	LTE Band 26/36RB#0 15M	Right Cheek	26865	22.56	23.50	1.242	0.689	0.855
	LTE Band 26/72RB#0 15M	Right Cheek	26765	22.49	23.50	1.262	0.689	0.869
Full Power (ANT 0)								
	LTE Band 26/1RB#0 15M	Right Cheek	26965	23.22	24.50	1.343	0.155	0.208



	LTE Band 26/1RB#0 15M	Right Tilt	26965	23.22	24.50	1.343	0.062	0.083
	LTE Band 26/1RB#0 15M	Left Cheek	26965	23.22	24.50	1.343	0.105	0.141
	LTE Band 26/1RB#0 15M	Left Tilt	26965	23.22	24.50	1.343	0.060	0.080
	LTE Band 26/36RB#0 15M	Right Cheek	26965	22.58	23.50	1.236	0.127	0.157
	LTE Band 26/36RB#0 15M	Right Tilt	26965	22.58	23.50	1.236	0.058	0.072
	LTE Band 26/36RB#0 15M	Left Cheek	26965	22.58	23.50	1.236	0.087	0.108
	LTE Band 26/36RB#0 15M	Left Tilt	26965	22.58	23.50	1.236	0.049	0.061
Reduced Power Level 1 (ANT 1)								
	LTE Band 38/1RB#0 20M	Right Cheek	38000	19.95	21.00	1.274	0.727	0.931
	LTE Band 38/1RB#0 20M	Right Tilt	38000	19.95	21.00	1.274	0.725	0.929
	LTE Band 38/1RB#0 20M	Left Cheek	38000	19.95	21.00	1.274	0.194	0.249
	LTE Band 38/1RB#0 20M	Left Tilt	38000	19.95	21.00	1.274	0.600	0.769
	LTE Band 38/1RB#0 20M	Right Cheek	37850	19.89	21.00	1.291	0.621	0.807
	LTE Band 38/1RB#0 20M	Right Cheek	38150	19.90	21.00	1.288	0.614	0.796
	LTE Band 38/1RB#0 20M	Right Tilt	37850	19.89	21.00	1.291	0.597	0.775
	LTE Band 38/1RB#0 20M	Right Tilt	38150	19.90	21.00	1.288	0.595	0.771
11#	LTE Band 38/50RB#0 20M	Right Cheek	38000	19.14	20.00	1.219	0.795	0.975
	LTE Band 38/50RB#0 20M	Right Tilt	38000	19.14	20.00	1.219	0.741	0.909
	LTE Band 38/50RB#0 20M	Left Cheek	38000	19.14	20.00	1.219	0.217	0.266
	LTE Band 38/50RB#0 20M	Left Tilt	38000	19.14	20.00	1.219	0.652	0.800
	LTE Band 38/50RB#0 20M	Right Cheek	37850	19.09	20.00	1.233	0.772	0.958
	LTE Band 38/50RB#0 20M	Right Cheek	38150	19.12	20.00	1.225	0.750	0.924
	LTE Band 38/50RB#0 20M	Right Tilt	37850	19.09	20.00	1.233	0.680	0.844
	LTE Band 38/50RB#0 20M	Right Tilt	38150	19.12	20.00	1.225	0.708	0.872
	LTE Band 38/100RB#0 20M	Right Cheek	38000	19.08	20.00	1.236	0.716	0.890
Full Power (ANT 0)								
	LTE Band 38/1RB#0 20M	Right Cheek	38000	22.76	24.00	1.330	0.031	0.041
	LTE Band 38/1RB#0 20M	Right Tilt	38000	22.76	24.00	1.330	0.043	0.058
	LTE Band 38/1RB#0 20M	Left Cheek	38000	22.76	24.00	1.330	0.137	0.183
	LTE Band 38/1RB#0 20M	Left Tilt	38000	22.76	24.00	1.330	0.061	0.082
	LTE Band 38/50RB#0 20M	Right Cheek	38000	22.24	23.00	1.191	0.024	0.028
	LTE Band 38/50RB#0 20M	Right Tilt	38000	22.24	23.00	1.191	0.036	0.043
	LTE Band 38/50RB#0 20M	Left Cheek	38000	22.24	23.00	1.191	0.116	0.139
	LTE Band 38/50RB#0 20M	Left Tilt	38000	22.24	23.00	1.191	0.054	0.065
Reduced Power Level 1 (ANT 1)								
	LTE Band 41/1RB#0 20M	Right Cheek	40140	19.45	20.50	1.274	0.654	0.838
	LTE Band 41/1RB#0 20M	Right Tilt	40140	19.45	20.50	1.274	0.637	0.816



	LTE Band 41/1RB#0 20M	Left Cheek	40140	19.45	20.50	1.274	0.180	0.231
	LTE Band 41/1RB#0 20M	Left Tilt	40140	19.45	20.50	1.274	0.170	0.218
	LTE Band 41/1RB#0 20M	Right Cheek	40390	19.39	20.50	1.291	0.704	0.914
	LTE Band 41/1RB#0 20M	Right Cheek	40640	19.41	20.50	1.285	0.740	0.957
12#	LTE Band 41/1RB#0 20M	Right Cheek	40890	19.37	20.50	1.297	0.757	0.988
	LTE Band 41/1RB#0 20M	Right Cheek	41140	19.38	20.50	1.294	0.739	0.962
	LTE Band 41/1RB#0 20M	Right Tilt	40390	19.39	20.50	1.291	0.632	0.821
	LTE Band 41/1RB#0 20M	Right Tilt	40640	19.41	20.50	1.285	0.622	0.804
	LTE Band 41/1RB#0 20M	Right Tilt	40890	19.37	20.50	1.297	0.607	0.792
	LTE Band 41/1RB#0 20M	Right Tilt	41140	19.38	20.50	1.294	0.597	0.777
	LTE Band 41/50RB#0 20M	Right Cheek	40140	19.14	20.00	1.219	0.701	0.860
	LTE Band 41/50RB#0 20M	Right Tilt	40140	19.14	20.00	1.219	0.620	0.760
	LTE Band 41/50RB#0 20M	Left Cheek	40140	19.14	20.00	1.219	0.186	0.228
	LTE Band 41/50RB#0 20M	Left Tilt	40140	19.14	20.00	1.219	0.191	0.234
	LTE Band 41/50RB#0 20M	Right Cheek	40390	19.09	20.00	1.233	0.648	0.803
	LTE Band 41/50RB#0 20M	Right Cheek	40640	19.10	20.00	1.230	0.625	0.774
	LTE Band 41/50RB#0 20M	Right Cheek	40890	19.11	20.00	1.227	0.696	0.860
	LTE Band 41/50RB#0 20M	Right Cheek	41140	19.02	20.00	1.253	0.680	0.857
	LTE Band 41/100RB#0 20M	Right Cheek	40140	18.81	20.00	1.315	0.628	0.831
Full Power (ANT 0)								
	LTE Band 41/1RB#0 20M	Right Cheek	40140	22.95	24.00	1.274	0.033	0.042
	LTE Band 41/1RB#0 20M	Right Tilt	40140	22.95	24.00	1.274	0.038	0.048
	LTE Band 41/1RB#0 20M	Left Cheek	40140	22.95	24.00	1.274	0.129	0.165
	LTE Band 41/1RB#0 20M	Left Tilt	40140	22.95	24.00	1.274	0.054	0.069
	LTE Band 41/50RB#0 20M	Right Cheek	40640	22.64	24.00	1.368	0.028	0.039
	LTE Band 41/50RB#0 20M	Right Tilt	40640	22.64	24.00	1.368	0.031	0.042
	LTE Band 41/50RB#0 20M	Left Cheek	40640	22.64	24.00	1.368	0.109	0.150
	LTE Band 41/50RB#0 20M	Left Tilt	40640	22.64	24.00	1.368	0.050	0.069
Reduced Power Level 1 (ANT 1)								
	LTE Band 66/1RB#0 20M	Right Cheek	132322	18.06	19.00	1.242	0.858	1.065
	LTE Band 66/1RB#0 20M	Right Tilt	132322	18.06	19.00	1.242	0.867	1.077
	LTE Band 66/1RB#0 20M	Left Cheek	132322	18.06	19.00	1.242	0.459	0.570
	LTE Band 66/1RB#0 20M	Left Tilt	132322	18.06	19.00	1.242	0.528	0.656
	LTE Band 66/1RB#0 20M	Right Cheek	132072	18.05	19.00	1.245	0.832	1.035
	LTE Band 66/1RB#0 20M	Right Cheek	132572	18.04	19.00	1.247	0.767	0.957
	LTE Band 66/1RB#0 20M	Right Tilt	132072	18.05	19.00	1.245	0.832	1.035
	LTE Band 66/1RB#0 20M	Right Tilt	132572	18.04	19.00	1.247	0.847	1.057



	LTE Band 66/50RB#0 20M	Right Cheek	132322	17.65	18.50	1.216	0.887	1.079
13#	LTE Band 66/50RB#0 20M	Right Tilt	132322	17.65	18.50	1.216	0.964	1.172
	LTE Band 66/50RB#0 20M	Left Cheek	132322	17.65	18.50	1.216	0.513	0.624
	LTE Band 66/50RB#0 20M	Left Tilt	132322	17.65	18.50	1.216	0.580	0.705
	LTE Band 66/50RB#0 20M	Right Cheek	132072	17.60	18.50	1.230	0.858	1.056
	LTE Band 66/50RB#0 20M	Right Cheek	132572	17.53	18.50	1.250	0.768	0.960
	LTE Band 66/50RB#0 20M	Right Tilt	132072	17.60	18.50	1.230	0.893	1.099
	LTE Band 66/50RB#0 20M	Right Tilt	132572	17.53	18.50	1.250	0.885	1.106
	LTE Band 66/100RB#0 20M	Right Tilt	132322	17.51	18.50	1.256	0.792	0.995
Full Power (ANT 0)								
	LTE Band 66/1RB#0 20M	Right Cheek	132322	22.76	24.00	1.330	0.133	0.177
	LTE Band 66/1RB#0 20M	Right Tilt	132322	22.76	24.00	1.330	0.058	0.077
	LTE Band 66/1RB#0 20M	Left Cheek	132322	22.76	24.00	1.330	0.067	0.089
	LTE Band 66/1RB#0 20M	Left Tilt	132322	22.76	24.00	1.330	0.041	0.055
	LTE Band 66/50RB#0 20M	Right Cheek	132322	22.35	24.00	1.462	0.128	0.187
	LTE Band 66/50RB#0 20M	Right Tilt	132322	22.35	24.00	1.462	0.051	0.075
	LTE Band 66/50RB#0 20M	Left Cheek	132322	22.35	24.00	1.462	0.065	0.095
	LTE Band 66/50RB#0 20M	Left Tilt	132322	22.35	24.00	1.462	0.040	0.058

➤ **WLAN Head SAR**

Plot No.	Band/Mode	Test Position	CH.	Ave. Power (dBm)	Tune-up Limit (dBm)	Tune-up Scaling Factor	Meas. SAR _{1g} (W/kg)	Reported SAR _{1g} (W/kg)
Full Power (ANT 4)								
	WLAN2.4GHz/802.11b	Right Cheek	6	15.90	17.00	1.288	0.273	0.353
	WLAN2.4GHz/802.11b	Right Tilt	6	15.90	17.00	1.288	0.209	0.271
14#	WLAN2.4GHz/802.11b	Left Cheek	6	15.90	17.00	1.288	0.393	0.509
	WLAN2.4GHz/802.11b	Left Tilt	6	15.90	17.00	1.288	0.298	0.386
Full Power (ANT 4)								
	WLAN5.2GHz/802.11n20	Right Cheek	44	16.41	17.50	1.285	0.172	0.229
	WLAN5.2GHz/802.11n20	Right Tilt	44	16.41	17.50	1.285	0.082	0.109
15#	WLAN5.2GHz/802.11n20	Left Cheek	44	16.41	17.50	1.285	0.506	0.675
	WLAN5.2GHz/802.11n20	Left Tilt	44	16.41	17.50	1.285	0.206	0.275
Reduced Power Level 2 (ANT 4)								
	WLAN5.3GHz/802.11ac20	Right Cheek	52	18.40	19.50	1.288	0.347	0.460
	WLAN5.3GHz/802.11ac20	Right Tilt	52	18.40	19.50	1.288	0.252	0.334
16#	WLAN5.3GHz/802.11ac20	Left Cheek	52	18.40	19.50	1.288	0.869	1.153
	WLAN5.3GHz/802.11ac20	Left Tilt	52	18.40	19.50	1.288	0.437	0.580



	WLAN5.3GHz/802.11ac20	Left Cheek	60	17.07	18.00	1.239	0.602	0.774
	WLAN5.3GHz/802.11ac20	Left Cheek	64	14.09	15.00	1.233	0.459	0.583
Reduced Power Level 5 for Simultaneous Transmission (ANT 4)								
	WLAN5.3GHz/802.11ac20	Right Cheek	52	16.40	17.50	1.288	0.232	0.308
	WLAN5.3GHz/802.11ac20	Right Tilt	52	16.40	17.50	1.288	0.152	0.202
	WLAN5.3GHz/802.11ac20	Left Cheek	52	16.40	17.50	1.288	0.391	0.519
	WLAN5.3GHz/802.11ac20	Left Tilt	52	16.40	17.50	1.288	0.437	0.580
Full Power (ANT 4)								
	WLAN5.5GHz/802.11ac20	Right Cheek	116	19.46	20.50	1.271	0.236	0.309
	WLAN5.5GHz/802.11ac20	Right Tilt	116	19.46	20.50	1.271	0.173	0.226
17#	WLAN5.5GHz/802.11ac20	Left Cheek	116	19.46	20.50	1.271	0.601	0.787
	WLAN5.5GHz/802.11ac20	Left Tilt	116	19.46	20.50	1.271	0.181	0.237
Full Power (ANT 4)								
	WLAN5.5GHz/802.11ac20	Right Cheek	149	18.65	19.50	1.216	0.100	0.126
	WLAN5.5GHz/802.11ac20	Right Tilt	149	18.65	19.50	1.216	0.057	0.072
18#	WLAN5.5GHz/802.11ac20	Left Cheek	149	18.65	19.50	1.216	0.598	0.755
	WLAN5.5GHz/802.11ac20	Left Tilt	149	18.65	19.50	1.216	0.172	0.217

Note:

1. Per KDB 447498 D01v06, for each exposure position, if the highest output power channel Reported SAR ≤ 0.8 W/kg, other channels SAR testing is not necessary.
2. Per KDB 865664 D01v01r04, for each frequency band, repeated SAR measurement is required when the measured SAR is ≥ 0.8 W/kg.
3. Per KDB 941225 D05v02r05, 100% RB allocation SAR measurement is not required when the highest reported SAR for 1 RB and 50% RB allocation are ≤ 0.8 W/kg.
4. Per KDB 248227 D01v02r02, for 802.11b DSSS , when the reported SAR of the highest measured maximum output power channel for the exposure configuration is ≤ 0.8 W/kg, no further SAR testing is required in that exposure configuration.
5. Per KDB 248227 D01v02r02, OFDM SAR is not required when the highest reported SAR for DSSS is adjusted by the ratio of OFDM to DSSS specified maximum output power and the adjusted SAR is ≤ 1.2 W/kg.
6. According to KDB 865664 D02v01r02, SAR plot is required for the highest measured SAR in each exposure configuration, wireless mode and frequency band combination.
7. For TDD-LTE, the reported SAR should be scaled with the duty cycle scaling factor 1.006.
8. The 2.4G WLAN reported 1g SAR (W/kg) should be scaled with the duty cycle scaling factor 1.005, WLAN 5.2G 802.11n20 with 1.038, WLAN 5.3G 802.11ac20 with 1.030 (CH 52 & 64) & 1.038 (CH 60), WLAN 5.5G 802.11ac20 with 1.030 and WLAN 5.8G 802.11ac20 with 1.038 (CH 149).



16.3. Body SAR Data

➤ **GSM Body SAR**

Plot No.	Band/Mode	Test Position	CH.	Ave. Power (dBm)	Tune-up Limit (dBm)	Tune-up Scaling Factor	Meas. SAR _{1g} (W/kg)	Reported SAR _{1g} (W/kg)
Full Power (ANT 1)								
	GPRS 850(4 TX slots)	Front Side	189	27.17	28.00	1.211	0.131	0.159
	GPRS 850(4 TX slots)	Back Side	189	27.17	28.00	1.211	0.201	0.243
	GPRS 850(4 TX slots)	Left Side	189	27.17	28.00	1.211	0.080	0.097
	GPRS 850(4 TX slots)	Top Side	189	27.17	28.00	1.211	0.149	0.180
Full Power (ANT 0)								
	GPRS 850(4 TX slots)	Front Side	189	27.17	28.00	1.211	0.160	0.194
19#	GPRS 850(4 TX slots)	Back Side	189	27.17	28.00	1.211	0.271	0.328
	GPRS 850(4 TX slots)	Left Side	189	27.17	28.00	1.211	0.061	0.074
	GPRS 850(4 TX slots)	Right Side	189	27.17	28.00	1.211	0.154	0.186
	GPRS 850(4 TX slots)	Bottom Side	189	27.17	28.00	1.211	0.228	0.276
Reduced Power Level 4 (ANT 1)								
	GPRS 1900(4 TX slots)	Front Side	810	23.60	24.50	1.230	0.255	0.314
20#	GPRS 1900(4 TX slots)	Back Side	810	23.60	24.50	1.230	0.502	0.618
	GPRS 1900(4 TX slots)	Left Side	810	23.60	24.50	1.230	0.364	0.448
21#	GPRS 1900(4 TX slots)	Top Side	810	23.60	24.50	1.230	0.790	0.972
	GPRS 1900(4 TX slots)	Top Side	512	23.54	24.50	1.247	0.664	0.828
	GPRS 1900(4 TX slots)	Top Side	661	23.58	24.50	1.236	0.738	0.912
Full Power (ANT 0)								
	GPRS 1900(4 TX slots)	Front Side	810	24.10	25.00	1.230	0.141	0.173
	GPRS 1900(4 TX slots)	Back Side	810	24.10	25.00	1.230	0.276	0.340
	GPRS 1900(4 TX slots)	Left Side	810	24.10	25.00	1.230	0.094	0.116
	GPRS 1900(4 TX slots)	Right Side	810	24.10	25.00	1.230	0.079	0.097
	GPRS 1900(4 TX slots)	Bottom Side	810	24.10	25.00	1.230	0.203	0.250

➤ **WCDMA Body SAR**

Plot No.	Band/Mode	Test Position	CH.	Ave. Power (dBm)	Tune-up Limit (dBm)	Tune-up Scaling Factor	Meas. SAR _{1g} (W/kg)	Reported SAR _{1g} (W/kg)
Reduced Power Level 4 (ANT 1)								
	Band II/RMC 12.2Kbps	Front Side	9400	19.38	20.50	1.294	0.295	0.382
22#	Band II/RMC 12.2Kbps	Back Side	9400	19.38	20.50	1.294	0.334	0.432
	Band II/RMC 12.2Kbps	Left Side	9400	19.38	20.50	1.294	0.135	0.175



	Band II/RMC 12.2Kbps	Top Side	9400	19.38	20.50	1.294	0.618	0.800
	Band II/RMC 12.2Kbps	Top Side	9262	19.30	20.50	1.318	0.608	0.802
23#	Band II/RMC 12.2Kbps	Top Side	9538	19.35	20.50	1.303	0.621	0.809
Full Power (ANT 0)								
	Band II/RMC 12.2Kbps	Front Side	9400	22.88	24.00	1.294	0.281	0.364
	Band II/RMC 12.2Kbps	Back Side	9400	22.88	24.00	1.294	0.316	0.409
	Band II/RMC 12.2Kbps	Left Side	9400	22.88	24.00	1.294	0.160	0.207
	Band II/RMC 12.2Kbps	Right Side	9400	22.88	24.00	1.294	0.055	0.071
	Band II/RMC 12.2Kbps	Bottom Side	9400	22.88	24.00	1.294	0.390	0.505
Reduced Power Level 4 (ANT 1)								
	Band IV/RMC 12.2Kbps	Front Side	1413	22.00	23.00	1.259	0.555	0.699
	Band IV/RMC 12.2Kbps	Back Side	1413	22.00	23.00	1.259	0.717	0.903
	Band IV/RMC 12.2Kbps	Left Side	1413	22.00	23.00	1.259	0.168	0.211
	Band IV/RMC 12.2Kbps	Top Side	1413	22.00	23.00	1.259	0.709	0.893
24#	Band IV/RMC 12.2Kbps	Back Side	1312	21.92	23.00	1.282	0.748	0.959
	Band IV/RMC 12.2Kbps	Back Side	1513	21.96	23.00	1.271	0.729	0.926
	Band IV/RMC 12.2Kbps	Top Side	1312	21.92	23.00	1.282	0.721	0.925
	Band IV/RMC 12.2Kbps	Top Side	1513	21.96	23.00	1.271	0.685	0.870
Reduced Power Level 3 (ANT 0)								
	Band IV/RMC 12.2Kbps	Front Side	1413	22.50	23.50	1.259	0.354	0.446
	Band IV/RMC 12.2Kbps	Back Side	1413	22.50	23.50	1.259	0.441	0.555
	Band IV/RMC 12.2Kbps	Left Side	1413	22.50	23.50	1.259	0.186	0.234
	Band IV/RMC 12.2Kbps	Right Side	1413	22.50	23.50	1.259	0.088	0.111
	Band IV/RMC 12.2Kbps	Bottom Side	1413	22.50	23.50	1.259	0.806	1.015
	Band IV/RMC 12.2Kbps	Bottom Side	1312	22.42	23.50	1.282	0.856	1.098
25#	Band IV/RMC 12.2Kbps	Bottom Side	1513	22.46	23.50	1.271	0.879	1.117
Full Power (ANT 1)								
	Band V/RMC 12.2Kbps	Front Side	4182	23.40	24.50	1.288	0.131	0.169
	Band V/RMC 12.2Kbps	Back Side	4182	23.40	24.50	1.288	0.189	0.243
	Band V/RMC 12.2Kbps	Left Side	4182	23.40	24.50	1.288	0.070	0.090
	Band V/RMC 12.2Kbps	Top Side	4182	23.40	24.50	1.288	0.168	0.216
Full Power (ANT 0)								
	Band V/RMC 12.2Kbps	Front Side	4182	23.40	24.50	1.288	0.152	0.196
26#	Band V/RMC 12.2Kbps	Back Side	4182	23.40	24.50	1.288	0.298	0.384
	Band V/RMC 12.2Kbps	Left Side	4182	23.40	24.50	1.288	0.063	0.081
	Band V/RMC 12.2Kbps	Right Side	4182	23.40	24.50	1.288	0.145	0.187
	Band V/RMC 12.2Kbps	Bottom Side	4182	23.40	24.50	1.288	0.222	0.286



➤ LTE QPSK Body SAR

Plot No.	Band/Mode	Test Position	CH.	Ave. Power (dBm)	Tune-up Limit (dBm)	Tune-up Scaling Factor	Meas. SAR _{1g} (W/kg)	Reported SAR _{1g} (W/kg)
Reduced Power Level 4 (ANT 1)								
	LTE Band 2/1RB#0 20M	Front Side	18900	19.55	20.50	1.245	0.180	0.224
	LTE Band 2/1RB#0 20M	Back Side	18900	19.55	20.50	1.245	0.250	0.311
	LTE Band 2/1RB#0 20M	Left Side	18900	19.55	20.50	1.245	0.113	0.141
27#	LTE Band 2/1RB#0 20M	Top Side	18900	19.55	20.50	1.245	0.594	0.739
	LTE Band 2/50RB#0 20M	Front Side	18900	18.65	19.50	1.216	0.137	0.166
	LTE Band 2/50RB#0 20M	Back Side	18900	18.65	19.50	1.216	0.190	0.231
	LTE Band 2/50RB#0 20M	Left Side	18900	18.65	19.50	1.216	0.086	0.104
	LTE Band 2/50RB#0 20M	Top Side	18900	18.65	19.50	1.216	0.500	0.608
Full Power (ANT 0)								
	LTE Band 2/1RB#0 20M	Front Side	18900	22.25	23.50	1.334	0.220	0.293
28#	LTE Band 2/1RB#0 20M	Back Side	18900	22.25	23.50	1.334	0.376	0.501
	LTE Band 2/1RB#0 20M	Left Side	18900	22.25	23.50	1.334	0.145	0.193
	LTE Band 2/1RB#0 20M	Right Side	18900	22.25	23.50	1.334	0.043	0.057
	LTE Band 2/1RB#0 20M	Bottom Side	18900	22.25	23.50	1.334	0.473	0.631
	LTE Band 2/50RB#0 20M	Front Side	18900	21.35	22.50	1.303	0.173	0.225
	LTE Band 2/50RB#0 20M	Back Side	18900	21.35	22.50	1.303	0.248	0.323
	LTE Band 2/50RB#0 20M	Left Side	18900	21.35	22.50	1.303	0.115	0.150
	LTE Band 2/50RB#0 20M	Right Side	18900	21.35	22.50	1.303	0.040	0.052
	LTE Band 2/50RB#0 20M	Bottom Side	18900	21.35	22.50	1.303	0.327	0.426
Full Power (ANT 1)								
	LTE Band 5/1RB#0 10M	Front Side	20525	23.61	24.50	1.227	0.205	0.252
29#	LTE Band 5/1RB#0 10M	Back Side	20525	23.61	24.50	1.227	0.221	0.271
	LTE Band 5/1RB#0 10M	Left Side	20525	23.61	24.50	1.227	0.148	0.182
	LTE Band 5/1RB#0 10M	Top Side	20450	23.61	24.50	1.227	0.215	0.264
	LTE Band 5/25RB#0 10M	Front Side	20600	22.87	24.00	1.297	0.183	0.237
	LTE Band 5/25RB#0 10M	Back Side	20600	22.87	24.00	1.297	0.200	0.259
	LTE Band 5/25RB#0 10M	Left Side	20600	22.87	24.00	1.297	0.142	0.184
	LTE Band 5/25RB#0 10M	Top Side	20600	22.87	24.00	1.297	0.193	0.250
Full Power (ANT 0)								
	LTE Band 5/1RB#0 10M	Front Side	20525	23.61	24.50	1.227	0.183	0.225
	LTE Band 5/1RB#0 10M	Back Side	20525	23.61	24.50	1.227	0.203	0.249
	LTE Band 5/1RB#0 10M	Left Side	20525	23.61	24.50	1.227	0.166	0.204
	LTE Band 5/1RB#0 10M	Right Side	20525	23.61	24.50	1.227	0.180	0.221
	LTE Band 5/1RB#0 10M	Bottom Side	20525	23.61	24.50	1.227	0.220	0.270



	LTE Band 5/25RB#0 10M	Front Side	20600	22.87	24.00	1.297	0.185	0.240
	LTE Band 5/25RB#0 10M	Back Side	20600	22.87	24.00	1.297	0.196	0.254
	LTE Band 5/25RB#0 10M	Left Side	20600	22.87	24.00	1.297	0.135	0.175
	LTE Band 5/25RB#0 10M	Right Side	20600	22.87	24.00	1.297	0.194	0.252
	LTE Band 5/25RB#0 10M	Bottom Side	20600	22.87	24.00	1.297	0.170	0.221
Reduced Power Level 4 (ANT 1)								
	LTE Band 7/1RB#0 20M	Front Side	20850	20.83	21.50	1.167	0.423	0.494
30#	LTE Band 7/1RB#0 20M	Back Side	20850	20.83	21.50	1.167	0.638	0.744
	LTE Band 7/1RB#0 20M	Left Side	20850	20.83	21.50	1.167	0.546	0.637
31#	LTE Band 7/1RB#0 20M	Top Side	20850	20.83	21.50	1.167	0.892	1.041
	LTE Band 7/1RB#0 20M	Top Side	21100	20.74	21.50	1.191	0.853	1.016
	LTE Band 7/1RB#0 20M	Top Side	21350	20.76	21.50	1.186	0.747	0.886
	LTE Band 7/50RB#0 20M	Front Side	20850	19.85	20.50	1.161	0.398	0.462
	LTE Band 7/50RB#0 20M	Back Side	20850	19.85	20.50	1.161	0.576	0.669
	LTE Band 7/50RB#0 20M	Left Side	20850	19.85	20.50	1.161	0.482	0.560
	LTE Band 7/50RB#0 20M	Top Side	20850	19.85	20.50	1.161	0.789	0.916
	LTE Band 7/50RB#0 20M	Top Side	21100	19.76	20.50	1.186	0.701	0.831
	LTE Band 7/50RB#0 20M	Top Side	21350	19.84	20.50	1.164	0.619	0.721
	LTE Band 7/100RB#0 20M	Top Side	20850	19.73	20.50	1.194	0.705	0.842
Reduced Power Level 3 (ANT 0)								
	LTE Band 7/1RB#0 20M	Front Side	20850	21.73	22.50	1.194	0.282	0.337
	LTE Band 7/1RB#0 20M	Back Side	20850	21.73	22.50	1.194	0.562	0.671
	LTE Band 7/1RB#0 20M	Left Side	20850	21.73	22.50	1.194	0.395	0.472
	LTE Band 7/1RB#0 20M	Right Side	20850	21.73	22.50	1.194	0.056	0.067
	LTE Band 7/1RB#0 20M	Bottom Side	20850	21.73	22.50	1.194	0.493	0.589
	LTE Band 7/50RB#0 20M	Front Side	20850	20.85	21.50	1.161	0.229	0.266
	LTE Band 7/50RB#0 20M	Back Side	20850	20.85	21.50	1.161	0.398	0.462
	LTE Band 7/50RB#0 20M	Left Side	20850	20.85	21.50	1.161	0.332	0.386
	LTE Band 7/50RB#0 20M	Right Side	20850	20.85	21.50	1.161	0.058	0.067
	LTE Band 7/50RB#0 20M	Bottom Side	20850	20.85	21.50	1.161	0.295	0.343
Full Power (ANT 1)								
	LTE Band 13/1RB#0 10M	Front Side	23230	23.32	24.50	1.312	0.087	0.114
32#	LTE Band 13/1RB#0 10M	Back Side	23230	23.32	24.50	1.312	0.177	0.232
	LTE Band 13/1RB#0 10M	Left Side	23230	23.32	24.50	1.312	0.089	0.117
	LTE Band 13/1RB#0 10M	Top Side	23230	23.32	24.50	1.312	0.101	0.133
	LTE Band 13/25RB#0 10M	Front Side	23230	22.26	23.50	1.330	0.075	0.100
	LTE Band 13/25RB#0 10M	Back Side	23230	22.26	23.50	1.330	0.118	0.157
	LTE Band 13/25RB#0 10M	Left Side	23230	22.26	23.50	1.330	0.071	0.094



	LTE Band 13/25RB#0 10M	Top Side	23230	22.26	23.50	1.330	0.079	0.105
Full Power (ANT 0)								
	LTE Band 13/1RB#0 10M	Front Side	23230	23.32	24.50	1.312	0.113	0.148
	LTE Band 13/1RB#0 10M	Back Side	23230	23.32	24.50	1.312	0.148	0.194
	LTE Band 13/1RB#0 10M	Left Side	23230	23.32	24.50	1.312	0.069	0.091
	LTE Band 13/1RB#0 10M	Right Side	23230	23.32	24.50	1.312	0.171	0.224
	LTE Band 13/1RB#0 10M	Bottom Side	23230	23.32	24.50	1.312	0.164	0.215
	LTE Band 13/25RB#0 10M	Front Side	23230	22.26	23.50	1.330	0.091	0.121
	LTE Band 13/25RB#0 10M	Back Side	23230	22.26	23.50	1.330	0.119	0.158
	LTE Band 13/25RB#0 10M	Left Side	23230	22.26	23.50	1.330	0.052	0.069
	LTE Band 13/25RB#0 10M	Right Side	23230	22.26	23.50	1.330	0.133	0.177
	LTE Band 13/25RB#0 10M	Bottom Side	23230	22.26	23.50	1.330	0.132	0.176
Full Power (ANT 1)								
	LTE Band 26/1RB#0 15M	Front Side	26965	23.22	24.50	1.343	0.115	0.154
33#	LTE Band 26/1RB#0 15M	Back Side	26965	23.22	24.50	1.343	0.271	0.364
	LTE Band 26/1RB#0 15M	Left Side	26965	23.22	24.50	1.343	0.058	0.078
	LTE Band 26/1RB#0 15M	Top Side	26965	23.22	24.50	1.343	0.125	0.168
	LTE Band 26/36RB#0 15M	Front Side	26965	22.58	23.50	1.236	0.093	0.115
	LTE Band 26/36RB#0 15M	Back Side	26965	22.58	23.50	1.236	0.178	0.220
	LTE Band 26/36RB#0 15M	Left Side	26965	22.58	23.50	1.236	0.052	0.064
	LTE Band 26/36RB#0 15M	Top Side	26965	22.58	23.50	1.236	0.103	0.127
Full Power (ANT 0)								
	LTE Band 26/1RB#0 15M	Front Side	26965	23.22	24.50	1.343	0.093	0.125
	LTE Band 26/1RB#0 15M	Back Side	26965	23.22	24.50	1.343	0.254	0.341
	LTE Band 26/1RB#0 15M	Left Side	26965	23.22	24.50	1.343	0.076	0.102
	LTE Band 26/1RB#0 15M	Right Side	26965	23.22	24.50	1.343	0.090	0.121
	LTE Band 26/1RB#0 15M	Bottom Side	26965	23.22	24.50	1.343	0.130	0.175
	LTE Band 26/36RB#0 15M	Front Side	26965	22.58	23.50	1.236	0.095	0.117
	LTE Band 26/36RB#0 15M	Back Side	26965	22.58	23.50	1.236	0.126	0.156
	LTE Band 26/36RB#0 15M	Left Side	26965	22.58	23.50	1.236	0.045	0.056
	LTE Band 26/36RB#0 15M	Right Side	26965	22.58	23.50	1.236	0.104	0.129
	LTE Band 26/36RB#0 15M	Bottom Side	26965	22.58	23.50	1.236	0.124	0.153
Full Power (ANT 1)								
	LTE Band 38/1RB#0 20M	Front Side	38000	22.76	24.00	1.330	0.126	0.169
34#	LTE Band 38/1RB#0 20M	Back Side	38000	22.76	24.00	1.330	0.385	0.515
	LTE Band 38/1RB#0 20M	Left Side	38000	22.76	24.00	1.330	0.155	0.207
35#	LTE Band 38/1RB#0 20M	Top Side	38000	22.76	24.00	1.330	0.545	0.729
	LTE Band 38/50RB#0 20M	Front Side	38000	22.24	23.00	1.191	0.116	0.139



	LTE Band 38/50RB#0 20M	Back Side	38000	22.24	23.00	1.191	0.321	0.385
	LTE Band 38/50RB#0 20M	Left Side	38000	22.24	23.00	1.191	0.103	0.123
	LTE Band 38/50RB#0 20M	Top Side	38000	22.24	23.00	1.191	0.102	0.122
Full Power (ANT 0)								
	LTE Band 38/1RB#0 20M	Front Side	38000	22.76	24.00	1.330	0.074	0.099
	LTE Band 38/1RB#0 20M	Back Side	38000	22.76	24.00	1.330	0.291	0.389
	LTE Band 38/1RB#0 20M	Left Side	38000	22.76	24.00	1.330	0.066	0.088
	LTE Band 38/1RB#0 20M	Right Side	38000	22.76	24.00	1.330	0.062	0.083
	LTE Band 38/1RB#0 20M	Bottom Side	38000	22.76	24.00	1.330	0.270	0.361
	LTE Band 38/50RB#0 20M	Front Side	38000	22.24	23.00	1.191	0.080	0.096
	LTE Band 38/50RB#0 20M	Back Side	38000	22.24	23.00	1.191	0.149	0.179
	LTE Band 38/50RB#0 20M	Left Side	38000	22.24	23.00	1.191	0.101	0.121
	LTE Band 38/50RB#0 20M	Right Side	38000	22.24	23.00	1.191	0.059	0.071
	LTE Band 38/50RB#0 20M	Bottom Side	38000	22.24	23.00	1.191	0.122	0.146
Full Power (ANT 1)								
	LTE Band 41/1RB#0 20M	Front Side	40140	22.95	24.00	1.274	0.210	0.269
36#	LTE Band 41/1RB#0 20M	Back Side	40140	22.95	24.00	1.274	0.412	0.528
	LTE Band 41/1RB#0 20M	Left Side	40140	22.95	24.00	1.274	0.245	0.314
37#	LTE Band 41/1RB#0 20M	Top Side	40140	22.95	24.00	1.274	0.539	0.691
	LTE Band 41/50RB#0 20M	Front Side	40640	22.64	24.00	1.368	0.166	0.227
	LTE Band 41/50RB#0 20M	Back Side	40640	22.64	24.00	1.368	0.250	0.3642
	LTE Band 41/50RB#0 20M	Left Side	40640	22.64	24.00	1.368	0.193	0.264
	LTE Band 41/50RB#0 20M	Top Side	40640	22.64	24.00	1.368	0.282	0.386
Full Power (ANT 0)								
	LTE Band 41/1RB#0 20M	Front Side	40140	22.95	24.00	1.274	0.144	0.184
	LTE Band 41/1RB#0 20M	Back Side	40140	22.95	24.00	1.274	0.281	0.360
	LTE Band 41/1RB#0 20M	Left Side	40140	22.95	24.00	1.274	0.243	0.311
	LTE Band 41/1RB#0 20M	Right Side	40140	22.95	24.00	1.274	0.055	0.070
	LTE Band 41/1RB#0 20M	Bottom Side	40140	22.95	24.00	1.274	0.248	0.318
	LTE Band 41/50RB#0 20M	Front Side	40640	22.64	24.00	1.368	0.120	0.165
	LTE Band 41/50RB#0 20M	Back Side	40640	22.64	24.00	1.368	0.226	0.311
	LTE Band 41/50RB#0 20M	Left Side	40640	22.64	24.00	1.368	0.181	0.249
	LTE Band 41/50RB#0 20M	Right Side	40640	22.64	24.00	1.368	0.037	0.051
	LTE Band 41/50RB#0 20M	Bottom Side	40640	22.64	24.00	1.368	0.179	0.246
Reduced Power Level 4 (ANT 1)								
	LTE Band 66/1RB#0 20M	Front Side	132322	21.89	22.50	1.151	0.227	0.261
	LTE Band 66/1RB#0 20M	Back Side	132322	21.89	22.50	1.151	0.253	0.291
	LTE Band 66/1RB#0 20M	Left Side	132322	21.89	22.50	1.151	0.064	0.074



	LTE Band 66/1RB#0 20M	Top Side	132322	21.89	22.50	1.151	0.333	0.383
	LTE Band 66/50RB#0 20M	Front Side	132322	21.19	22.00	1.205	0.246	0.296
	LTE Band 66/50RB#0 20M	Back Side	132322	21.19	22.00	1.205	0.420	0.506
	LTE Band 66/50RB#0 20M	Left Side	132322	21.19	22.00	1.205	0.076	0.092
	LTE Band 66/50RB#0 20M	Top Side	132322	21.19	22.00	1.205	0.461	0.556
Reduced Power Level 3 (ANT 0)								
	LTE Band 66/1RB#0 20M	Front Side	132322	22.26	23.50	1.330	0.205	0.273
38#	LTE Band 66/1RB#0 20M	Back Side	132322	22.26	23.50	1.330	0.688	0.915
	LTE Band 66/1RB#0 20M	Left Side	132322	22.26	23.50	1.330	0.116	0.154
	LTE Band 66/1RB#0 20M	Right Side	132322	22.26	23.50	1.330	0.060	0.080
39#	LTE Band 66/1RB#0 20M	Bottom Side	132322	22.26	23.50	1.330	0.729	0.970
	LTE Band 66/1RB#0 20M	Back Side	132072	22.25	23.50	1.334	0.647	0.863
	LTE Band 66/1RB#0 20M	Back Side	132572	22.24	23.50	1.337	0.671	0.897
	LTE Band 66/1RB#0 20M	Bottom Side	132072	22.25	23.50	1.334	0.718	0.957
	LTE Band 66/1RB#0 20M	Bottom Side	132572	22.24	23.50	1.337	0.682	0.912
	LTE Band 66/50RB#0 20M	Front Side	132322	21.85	22.50	1.161	0.235	0.273
	LTE Band 66/50RB#0 20M	Back Side	132322	21.85	22.50	1.161	0.336	0.390
	LTE Band 66/50RB#0 20M	Left Side	132322	21.85	22.50	1.161	0.115	0.134
	LTE Band 66/50RB#0 20M	Right Side	132322	21.85	22.50	1.161	0.083	0.096
	LTE Band 66/50RB#0 20M	Bottom Side	132322	21.85	22.50	1.161	0.797	0.926
	LTE Band 66/50RB#0 20M	Bottom Side	132072	21.80	22.50	1.175	0.699	0.821
	LTE Band 66/50RB#0 20M	Bottom Side	132572	21.73	22.50	1.194	0.726	0.867
	LTE Band 66/100RB#0 20M	Bottom Side	132322	21.71	22.50	1.199	0.710	0.852

➤ **WLAN Body SAR**

Plot No.	Band/Mode	Test Position	CH.	Ave. Power (dBm)	Tune-up Limit (dBm)	Tune-up Scaling Factor	Meas. SAR _{1g} (W/kg)	Reported SAR _{1g} (W/kg)
Full Power (ANT 4)								
	WLAN2.4GHz/802.11b	Front Side	6	15.90	17.00	1.288	0.064	0.083
40#	WLAN2.4GHz/802.11b	Back Side	6	15.90	17.00	1.288	0.114	0.148
	WLAN2.4GHz/802.11b	Right Side	6	15.90	17.00	1.288	0.059	0.076
	WLAN2.4GHz/802.11b	Top Side	6	15.90	17.00	1.288	0.058	0.075
Full Power (ANT 4)								
	WLAN5.2GHz/802.11n20	Front Side	44	16.41	17.50	1.285	0.131	0.175
41#	WLAN5.2GHz/802.11n20	Back Side	44	16.41	17.50	1.285	0.148	0.197
42#	WLAN5.2GHz/802.11n20	Right Side	44	16.41	17.50	1.285	0.235	0.314
	WLAN5.2GHz/802.11n20	Top Side	44	16.41	17.50	1.285	0.058	0.077



Full Power (ANT 4)								
	WLAN5.3GHz/802.11ac20	Front Side	52	19.40	20.50	1.288	0.188	0.249
43#	WLAN5.3GHz/802.11ac20	Back Side	52	19.40	20.50	1.288	0.238	0.316
Full Power (ANT 4)								
	WLAN5.5GHz/802.11ac20	Front Side	116	19.46	20.50	1.271	0.210	0.275
44#	WLAN5.5GHz/802.11ac20	Back Side	116	19.46	20.50	1.271	0.469	0.614
Full Power (ANT 4)								
	WLAN5.8GHz/802.11ac20	Front Side	149	18.65	19.50	1.216	0.174	0.220
45#	WLAN5.8GHz/802.11ac20	Back Side	149	18.65	19.50	1.216	0.207	0.261
46#	WLAN5.8GHz/802.11ac20	Right Side	149	18.65	19.50	1.216	0.903	1.140
	WLAN5.8GHz/802.11ac20	Top Side	149	18.65	19.50	1.216	0.101	0.128
	WLAN5.8GHz/802.11ac20	Right Side	157	18.37	19.00	1.156	0.344	0.410
	WLAN5.8GHz/802.11ac20	Right Side	165	18.43	19.00	1.140	0.427	0.502
Reduced Power Level 6 for Simultaneous Transmission (ANT 4)								
	WLAN5.8GHz/802.11ac20	Front Side	149	16.65	17.50	1.216	0.100	0.126
	WLAN5.8GHz/802.11ac20	Back Side	149	16.65	17.50	1.216	0.112	0.141
	WLAN5.8GHz/802.11ac20	Right Side	149	16.65	17.50	1.216	0.430	0.543
	WLAN5.8GHz/802.11ac20	Top Side	149	16.65	17.50	1.216	0.101	0.128
Full Power (ANT 4)								
	Bluetooth/DH5	Front Side	78	11.92	13.00	1.282	0.010	0.014
47#	Bluetooth/DH5	Back Side	78	11.92	13.00	1.282	0.015	0.021
	Bluetooth/DH5	Right Side	78	11.92	13.00	1.282	0.009	0.012
	Bluetooth/DH5	Top Side	78	11.92	13.00	1.282	0.014	0.019

Note:

1. For TDD-LTE, the reported SAR should be scaled with the duty cycle scaling factor 1.006.
2. The 2.4G WLAN reported 1g SAR (W/kg) should be scaled with the duty cycle scaling factor 1.005, WLAN 5.2G 802.11n20 with 1.038, WLAN 5.3G 802.11ac20 with 1.030 (CH 52 & 64) & 1.038 (CH 60), WLAN 5.5G 802.11ac20 with 1.030 and WLAN 5.8G 802.11ac20 with 1.038(CH 149) & 1.031(CH 157 & 165).
3. According to 2016 Oct. TCB workshop for Bluetooth SAR consideration and the theoretical duty cycle is 83.3%, therefore the actual duty cycle will be scaled up to the theoretical value of Bluetooth reported SAR calculation. The duty cycle of Bluetooth is 77.07 %, Therefore the duty cycle scaling factor 1.081 should be used to calculating the reported SAR.



16.4. Repeated SAR Assessment

➤ General Note

In accordance with published RF Exposure KDB procedure 865664 D01 SAR measurement 100 MHz to 6 GHz. These additional measurements are repeated after the completion of all measurements requiring the same head or body tissue-equivalent medium in a frequency band. The test device should be returned to ambient conditions (normal room temperature) with the battery fully charged before it is re-mounted on the device holder for the repeated measurement(s) to minimize any unexpected variations in the repeated results.

1. Repeated measurement is not required when the original highest measured SAR is < 0.80 W/kg;
2. When the original highest measured SAR is ≥ 0.80 W/kg, repeat that measurement once.
3. Perform a second repeated measurement only if the ratio of largest to smallest SAR for the original and first repeated measurements is > 1.20 or when the original or repeated measurement is ≥ 1.45 W/kg ($\sim 10\%$ from the 1-g SAR limit).
4. Perform a third repeated measurement only if the original, first or second repeated measurement is ≥ 1.5 W/kg and the ratio of largest to smallest SAR for the original, first and second repeated measurements is > 1.20 .

➤ Test Results

Plot No.	Band/Mode	Test Position	CH.	Ave. Power (dBm)	Tune-up Limit (dBm)	Tune-up Scaling Factor	Meas. SAR _{1g} (W/kg)	Reported SAR _{1g} (W/kg)
Reduced Power Level 1 (ANT 1)								
OR.	GPRS 1900(4 TX slots)	Right Tilt	810	20.80	22.00	1.318	0.850	1.121
1 st	GPRS 1900(4 TX slots)	Right Tilt	810	20.80	22.00	1.318	0.819	1.080
Reduced Power Level 1 (ANT 1)								
OR.	Band II/RMC 12.2Kbps	Right Tilt	9538	17.55	18.50	1.245	0.834	1.038
1 st	Band II/RMC 12.2Kbps	Right Tilt	9538	17.55	18.50	1.245	0.811	1.009
Reduced Power Level 1 (ANT 1)								
OR.	Band IV/RMC 12.2Kbps	Right Tilt	1312	17.72	18.50	1.197	0.808	0.967
1 st	Band IV/RMC 12.2Kbps	Right Tilt	1312	17.72	18.50	1.197	0.752	0.900
Full Power (ANT 1)								
OR.	Band V/RMC 12.2Kbps	Right Cheek	4182	23.40	24.50	1.288	0.923	1.189
1 st	Band V/RMC 12.2Kbps	Right Cheek	4182	23.40	24.50	1.288	0.859	1.107
Reduced Power Level 1 (ANT 1)								
OR.	LTE Band 7/50RB#0 20M	Right Tilt	20850	16.15	17.00	1.216	0.866	1.053
1 st	LTE Band 7/50RB#0 20M	Right Tilt	20850	16.15	17.00	1.216	0.824	1.002
Reduced Power Level 1 (ANT 1)								
OR.	LTE Band 66/50RB#0 20M	Right Tilt	132322	17.65	18.50	1.216	0.964	1.172



1 st	LTE Band 66/50RB#0 20M	Right Tilt	132322	17.65	18.50	1.216	0.802	0.975
Reduced Power Level 2 (ANT 4)								
OR.	WLAN5.3GHz/802.11ac20	Left Cheek	52	18.40	19.50	1.288	0.869	1.153
1 st	WLAN5.3GHz/802.11ac20	Left Cheek	52	18.40	19.50	1.288	0.815	1.081
Reduced Power Level 3 (ANT 0)								
OR.	Band IV/RMC 12.2Kbps	Bottom Side	1513	22.46	23.50	1.271	0.879	1.117
1 st	Band IV/RMC 12.2Kbps	Bottom Side	1513	22.46	23.50	1.271	0.854	1.085
Reduced Power Level 4 (ANT 1)								
OR.	LTE Band 7/50RB#0 20M	Top Side	20850	20.83	21.50	1.167	0.892	1.041
1 st	LTE Band 7/50RB#0 20M	Top Side	20850	20.83	21.50	1.167	0.875	1.021



16.5. Extremity SAR Assessment

➤ General Guidance

1. According to KDB 648747 D04v01r03 The UMPC mini-tablet procedures must also be applied to test the SAR of all surfaces and edges with an antenna located at ≤ 25 mm from that surface or edge, in direct contact with a flat phantom, for 10-g extremity SAR according to the body-equivalent tissue dielectric parameters in KDB Publication 865664 D01 to address interactive hand use exposure conditions.
2. When hotspot mode applies, 10-g extremity SAR is required only for the surfaces and edges with hotspot mode 1-g reported SAR > 1.2 W/kg.
3. According to the user manual, the EUT diagonal size is greater than 16cm, therefore the 0mm extremity SAR of WLAN 5GHz is required. There are two types of antennas in this device, only the worst antenna was tested the extremity SAR in this report.

➤ Test Results

Plot No.	Band/Mode	Test Position	CH.	Ave. Power (dBm)	Tune-up Limit (dBm)	Tune-up Scaling Factor	Meas. SAR _{10g} (W/kg)	Reported SAR _{10g} (W/kg)
Full Power (ANT 4)								
48#	WLAN5.3GHz/802.11ac20	Front Side	52	19.40	20.50	1.288	0.317	0.421
	WLAN5.3GHz/802.11ac20	Back Side	52	19.40	20.50	1.288	0.259	0.344
Full Power (ANT 4)								
49#	WLAN5.5GHz/802.11ac20	Front Side	116	19.46	20.50	1.271	0.576	0.754
	WLAN5.5GHz/802.11ac20	Back Side	116	19.46	20.50	1.271	0.362	0.474

Note: The 5.3G WLAN 802.11ac20 reported 10g SAR (W/kg) should be scaled with the duty cycle scaling factor 1.030 (CH52) and 5.5G WLAN 802.11ac20 with 1.030.



17. Simultaneous Transmission Evaluation

17.1. Simultaneous Transmission Consideration

No.	Simultaneous Transmission Consideration	Head	Body-Worn	Hotspot
1	WWAN+WLAN 2.4GHz	Yes	Yes	Yes
2	WWAN+WLAN 5.2GHz/5.8GHz	Yes	Yes	Yes
3	WWAN+WLAN 5.3GHz/5.5GHz	Yes	Yes	No
4	WWAN+Bluetooth	No	Yes	Yes

Note:

1. When the user enables the personal wireless router functions for the handset, actual operations include simultaneous transmission of the WWAN and WLAN transmitters. The "Portable Hotspot" feature on the handset was NOT activated, to ensure the SAR measurements were evaluated for a single transmission frequency RF signal.
2. The hotspot SAR result may overlap with the body-worn accessory SAR requirements, per KDB 941225 D06, the more conservative configurations can be considered, thus excluding some unnecessary body-worn accessory SAR tests.
3. Simultaneous Transmission SAR evaluation is not required for BT and WLAN, because the software mechanism have been incorporated to guarantee that the WLAN and Bluetooth transmitters would not simultaneously operate.
4. Per KDB 447498D01v06, simultaneous transmission SAR evaluation procedures is as followed:
Step 1: If sum of 1 g SAR < 1.6 W/kg, Simultaneous SAR measurement is not required.
Step 2: If sum of 1 g SAR > 1.6 W/kg, ratio of SAR to peak separation distance for pair of transmitters calculated.
Step 3: If the ratio of SAR to peak separation distance is ≤ 0.04 , Simultaneous SAR measurement is not required.
Step 4: If the ratio of SAR to peak separation distance is > 0.04 , Simultaneous SAR measurement is required and simultaneous transmission SAR value is calculated.
(The ratio is determined by: $(SAR1 + SAR2) \wedge 1.5/Ri \leq 0.04$,
Ri is the separation distance between the peak SAR locations for the antenna pair in mm.
5. This device does not support the combination of WWAN+WLAN 2.4GHz+WLAN 5GHz.

17.2. Simultaneous Transmission Analysis

➤ Head Simultaneous Transmission for WWAN+WLAN 2.4GHz/5GHz

WWAN Band	Exposure Position	1	2	3	1+2 Summed 1g SAR (W/kg)	1+3 Summed 1g SAR (W/kg)
		WWAN	2.4GHz WLAN	5GHz WLAN		
		1g SAR (W/kg)	1g SAR (W/kg)	1g SAR (W/kg)		
GSM 850	Right Cheek	0.962	0.353	0.309	1.315	1.271
	Right Tilt	0.832	0.271	0.226	1.103	1.058
	Left Cheek	0.634	0.509	0.787	1.143	1.421
	Left Tilt	0.569	0.386	0.580	0.955	1.149
GSM 1900	Right Cheek	1.003	0.353	0.309	1.356	1.312
	Right Tilt	1.121	0.271	0.226	1.392	1.347
	Left Cheek	0.442	0.509	0.787	0.951	1.229
	Left Tilt	0.518	0.386	0.580	0.904	1.098
WCDMA II	Right Cheek	0.676	0.353	0.309	1.029	0.985
	Right Tilt	1.038	0.271	0.226	1.309	1.264
	Left Cheek	0.388	0.509	0.787	0.897	1.175
	Left Tilt	0.456	0.386	0.580	0.842	1.036
WCDMA IV	Right Cheek	0.524	0.353	0.309	0.877	0.833
	Right Tilt	0.967	0.271	0.226	1.238	1.193
	Left Cheek	0.505	0.509	0.787	1.014	1.292
	Left Tilt	0.493	0.386	0.580	0.879	1.073
WCDMA V	Right Cheek	1.189	0.353	0.309	1.542	1.498
	Right Tilt	0.982	0.271	0.226	1.253	1.208
	Left Cheek	0.578	0.509	0.787	1.087	1.365
	Left Tilt	0.620	0.386	0.580	1.006	1.200
LTE Band 2	Right Cheek	0.620	0.353	0.309	0.973	0.929
	Right Tilt	0.975	0.271	0.226	1.246	1.201
	Left Cheek	0.152	0.509	0.787	0.661	0.939
	Left Tilt	0.468	0.386	0.580	0.854	1.048
LTE Band 5	Right Cheek	0.883	0.353	0.309	1.236	1.192
	Right Tilt	0.636	0.271	0.226	0.907	0.862
	Left Cheek	0.527	0.509	0.787	1.036	1.314
	Left Tilt	0.489	0.386	0.580	0.875	1.069
LTE Band 7	Right Cheek	0.981	0.353	0.309	1.334	1.290
	Right Tilt	1.053	0.271	0.226	1.324	1.279
	Left Cheek	0.314	0.509	0.787	0.823	1.101
	Left Tilt	0.338	0.386	0.580	0.724	0.918
LTE Band 13	Right Cheek	0.748	0.353	0.309	1.101	1.057



	Right Tilt	0.600	0.271	0.226	0.871	0.826
	Left Cheek	0.495	0.509	0.787	1.004	1.282
	Left Tilt	0.433	0.386	0.580	0.819	1.013
LTE Band 26	Right Cheek	1.070	0.353	0.309	1.423	1.379
	Right Tilt	0.796	0.271	0.226	1.067	1.022
	Left Cheek	0.697	0.509	0.787	1.206	1.484
	Left Tilt	0.655	0.386	0.580	1.041	1.235
LTE Band 38	Right Cheek	0.975	0.353	0.309	1.328	1.284
	Right Tilt	0.929	0.271	0.226	1.200	1.155
	Left Cheek	0.266	0.509	0.787	0.775	1.053
	Left Tilt	0.800	0.386	0.580	1.186	1.380
LTE Band 41	Right Cheek	0.988	0.353	0.309	1.341	1.297
	Right Tilt	0.821	0.271	0.226	1.092	1.047
	Left Cheek	0.231	0.509	0.787	0.740	1.018
	Left Tilt	0.234	0.386	0.580	0.620	0.814
LTE Band 66/4	Right Cheek	1.079	0.353	0.309	1.432	1.388
	Right Tilt	1.172	0.271	0.226	1.443	1.398
	Left Cheek	0.624	0.509	0.787	1.133	1.411
	Left Tilt	0.705	0.386	0.580	1.091	1.285

➤ **Body Simultaneous Transmission for WWAN+WLAN 2.4GHz/5GHz**

WWAN Band	Exposure Position	1	2	3	1+2 Summed 1g SAR (W/kg)	1+3 Summed 1g SAR (W/kg)
		WWAN	2.4GHz WLAN	5GHz WLAN		
		1g SAR (W/kg)	1g SAR (W/kg)	1g SAR (W/kg)		
GSM 850	Front Side	0.194	0.083	0.275	0.277	0.469
	Back Side	0.328	0.148	0.614	0.476	0.942
	Left Side	0.097	/	/	0.097	0.097
	Right Side	0.186	0.076	0.543	0.262	0.729
	Top Side	0.180	0.075	0.128	0.255	0.308
	Bottom Side	0.276	/	/	0.276	0.276
GSM 1900	Front Side	0.314	0.083	0.275	0.397	0.589
	Back Side	0.618	0.148	0.614	0.766	1.232
	Left Side	0.448	/	/	0.448	0.448
	Right Side	0.097	0.076	0.543	0.173	0.640
	Top Side	0.972	0.075	0.128	1.047	1.100
	Bottom Side	0.250	/	/	0.250	0.250
WCDMA II	Front Side	0.382	0.083	0.275	0.465	0.657
	Back Side	0.432	0.148	0.614	0.580	1.046
	Left Side	0.207	/	/	0.207	0.207
	Right Side	0.071	0.076	0.543	0.147	0.614



	Top Side	0.809	0.075	0.128	0.884	0.937	
	Bottom Side	0.505	/	/	0.505	0.505	
WCDMA IV	Front Side	0.699	0.083	0.275	0.782	0.974	
	Back Side	0.959	0.148	0.614	1.107	1.573	
	Left Side	0.234	/	/	0.234	0.234	
	Right Side	0.111	0.076	0.543	0.187	0.654	
	Top Side	0.925	0.075	0.128	1.000	1.053	
	Bottom Side	1.117	/	/	1.117	1.117	
	WCDMA V	Front Side	0.196	0.083	0.275	0.279	0.471
		Back Side	0.384	0.148	0.614	0.532	0.998
Left Side		0.090	/	/	0.090	0.090	
Right Side		0.187	0.076	0.543	0.263	0.730	
Top Side		0.216	0.075	0.128	0.291	0.344	
Bottom Side		0.286	/	/	0.286	0.286	
LTE Band 2	Front Side	0.293	0.083	0.275	0.376	0.568	
	Back Side	0.501	0.148	0.614	0.649	1.115	
	Left Side	0.193	/	/	0.193	0.193	
	Right Side	0.057	0.076	0.543	0.133	0.600	
	Top Side	0.739	0.075	0.128	0.814	0.867	
	Bottom Side	0.631	/	/	0.631	0.631	
LTE Band 5	Front Side	0.252	0.083	0.275	0.335	0.527	
	Back Side	0.271	0.148	0.614	0.419	0.885	
	Left Side	0.204	/	/	0.204	0.204	
	Right Side	0.252	0.076	0.543	0.328	0.795	
	Top Side	0.267	0.075	0.128	0.342	0.395	
	Bottom Side	0.270	/	/	0.270	0.270	
LTE Band 7	Front Side	0.494	0.083	0.275	0.577	0.769	
	Back Side	0.744	0.148	0.614	0.892	1.358	
	Left Side	0.637	/	/	0.637	0.637	
	Right Side	0.067	0.076	0.543	0.143	0.610	
	Top Side	1.041	0.075	0.128	1.116	1.169	
	Bottom Side	0.589	/	/	0.589	0.589	
LTE Band 13	Front Side	0.148	0.083	0.275	0.231	0.423	
	Back Side	0.232	0.148	0.614	0.380	0.846	
	Left Side	0.117	/	/	0.117	0.117	
	Right Side	0.224	0.076	0.543	0.300	0.767	
	Top Side	0.133	0.075	0.128	0.208	0.261	
	Bottom Side	0.215	/	/	0.215	0.215	
LTE Band 26	Front Side	0.154	0.083	0.275	0.237	0.429	
	Back Side	0.364	0.148	0.614	0.512	0.978	
	Left Side	0.102	/	/	0.102	0.102	



	Right Side	0.129	0.076	0.543	0.205	0.672
	Top Side	0.168	0.075	0.128	0.243	0.296
	Bottom Side	0.175	/	/	0.175	0.175
LTE Band 38	Front Side	0.169	0.083	0.275	0.252	0.444
	Back Side	0.515	0.148	0.614	0.663	1.129
	Left Side	0.207	/	/	0.207	0.207
	Right Side	0.083	0.076	0.543	0.159	0.626
	Top Side	0.729	0.075	0.128	0.804	0.857
	Bottom Side	0.361	/	/	0.361	0.361
LTE Band 41	Front Side	0.269	0.083	0.275	0.352	0.544
	Back Side	0.528	0.148	0.614	0.676	1.142
	Left Side	0.314	/	/	0.314	0.314
	Right Side	0.070	0.076	0.543	0.146	0.613
	Top Side	0.691	0.075	0.128	0.766	0.819
	Bottom Side	0.318	/	/	0.318	0.318
LTE Band 66/4	Front Side	0.296	0.083	0.275	0.379	0.571
	Back Side	0.915	0.148	0.614	1.063	1.529
	Left Side	0.154	/	/	0.154	0.154
	Right Side	0.096	0.076	0.543	0.172	0.639
	Top Side	0.556	0.075	0.128	0.631	0.684
	Bottom Side	0.970	/	/	0.970	0.970

➤ **Body Simultaneous Transmission for WWAN+Bluetooth**

WWAN Band	Exposure Position	1	2	1+2 Summed 1g SAR (W/kg)
		WWAN	Bluetooth	
		1g SAR (W/kg)	1g SAR (W/kg)	
GSM 850	Front Side	0.194	0.014	0.208
	Back Side	0.328	0.021	0.349
	Left Side	0.097	/	0.097
	Right Side	0.186	0.012	0.198
	Top Side	0.180	0.019	0.199
	Bottom Side	0.276	/	0.276
GSM 1900	Front Side	0.314	0.014	0.328
	Back Side	0.618	0.021	0.639
	Left Side	0.448	/	0.448
	Right Side	0.097	0.012	0.109
	Top Side	0.972	0.019	0.991
	Bottom Side	0.250	/	0.250
WCDMA II	Front Side	0.382	0.014	0.396
	Back Side	0.432	0.021	0.453



	Left Side	0.207	/	0.207
	Right Side	0.071	0.012	0.083
	Top Side	0.809	0.019	0.828
	Bottom Side	0.505	/	0.505
WCDMA IV	Front Side	0.699	0.014	0.713
	Back Side	0.959	0.021	0.980
	Left Side	0.234	/	0.234
	Right Side	0.111	0.012	0.123
	Top Side	0.925	0.019	0.944
	Bottom Side	1.117	/	1.117
WCDMA V	Front Side	0.196	0.014	0.210
	Back Side	0.384	0.021	0.405
	Left Side	0.090	/	0.090
	Right Side	0.187	0.012	0.199
	Top Side	0.216	0.019	0.235
	Bottom Side	0.286	/	0.286
LTE Band 2	Front Side	0.293	0.014	0.307
	Back Side	0.501	0.021	0.522
	Left Side	0.193	/	0.193
	Right Side	0.057	0.012	0.069
	Top Side	0.739	0.019	0.758
	Bottom Side	0.631	/	0.631
LTE Band 5	Front Side	0.252	0.014	0.266
	Back Side	0.271	0.021	0.292
	Left Side	0.204	/	0.204
	Right Side	0.252	0.012	0.264
	Top Side	0.267	0.019	0.286
	Bottom Side	0.270	/	0.270
LTE Band 7	Front Side	0.494	0.014	0.508
	Back Side	0.744	0.021	0.765
	Left Side	0.637	/	0.637
	Right Side	0.067	0.012	0.079
	Top Side	1.041	0.019	1.060
	Bottom Side	0.589	/	0.589
LTE Band 13	Front Side	0.148	0.014	0.162
	Back Side	0.232	0.021	0.253
	Left Side	0.117	/	0.117
	Right Side	0.224	0.012	0.236
	Top Side	0.133	0.019	0.152
	Bottom Side	0.215	/	0.215
LTE Band 26	Front Side	0.154	0.014	0.168



	Back Side	0.364	0.021	0.385
	Left Side	0.102	/	0.102
	Right Side	0.129	0.012	0.141
	Top Side	0.168	0.019	0.187
	Bottom Side	0.175	/	0.175
LTE Band 38	Front Side	0.169	0.014	0.183
	Back Side	0.515	0.021	0.536
	Left Side	0.207	/	0.207
	Right Side	0.083	0.012	0.095
	Top Side	0.729	0.019	0.748
	Bottom Side	0.361	/	0.361
LTE Band 41	Front Side	0.269	0.014	0.283
	Back Side	0.528	0.021	0.549
	Left Side	0.314	/	0.314
	Right Side	0.070	0.012	0.082
	Top Side	0.691	0.019	0.710
	Bottom Side	0.318	/	0.318
LTE Band 66/4	Front Side	0.296	0.014	0.310
	Back Side	0.915	0.021	0.936
	Left Side	0.154	/	0.154
	Right Side	0.096	0.012	0.108
	Top Side	0.556	0.019	0.575
	Bottom Side	0.970	/	0.970



18. Uncertainty Assessment

According to KDB 865664 D01 SAR measurement 100 MHz to 6GHz, when the highest measured 1-g SAR is less than 1.5 W/kg and 10-g extremity SAR less than 3.75 W/kg, the expanded SAR measurement uncertainty must be less than 30% with a confidence interval of $k=2$. When these conditions are met, extensive SAR measurement uncertainty analysis described in IEEE 1528-2013 is not required in the SAR report and submitted for equipment approval. For this device, both the 1-g SAR is less than 1.5 W/kg and 10-g extremity SAR less than 3.75 W/kg. Therefore the measurement uncertainty table is not required in this report.



Annex A General Information

1. Identification of the Responsible Testing Laboratory

Laboratory Name:	Shenzhen Morlab Communications Technology Co., Ltd.
Laboratory Address:	FL.3, Building A, FeiYang Science Park, No.8 LongChang Road, Block 67, BaoAn District, ShenZhen, Guangdong Province, P. R. China
Telephone:	+86 755 36698555
Facsimile:	+86 755 36698525

2. Identification of the Responsible Testing Location

Name:	Shenzhen Morlab Communications Technology Co., Ltd.
Address:	FL.3, Building A, FeiYang Science Park, No.8 LongChang Road, Block 67, BaoAn District, ShenZhen, Guangdong Province, P. R. China

3. Facilities and Accreditations

The FCC designation number is CN1192, the test firm registration number is 226174.

Note:

The main report is end here and the other Annex (B,C,D,E,F) will be submitted separately.

***** END OF MAIN REPORT *****