

**Meas.87 Body Plane with Bask Side 10mm on 39 Channel in Bluetooth mode with Antenna 13**

**Device under Test Properties**

Model, Manufacturer	Dimensions [mm]	DUT Type
Device,	165.0 x 75.0 x 8.0	Phone

**Exposure Conditions**

Phantom Section, TSL	Position, Test Distance [mm]	Band	Group, UID	Frequency [MHz], Channel Number	Conversion Factor	TSL Conductivity [S/m]	TSL Permittivity	Ambient Temperature [°C]	Liquid Temperature [°C]
Flat, HSL	BACK, 10.00	ISM, 2.4 GHz Band	Bluetooth, 10032-CAA	2441.0, 39	7.47	1.82	38.2	22.2	21.9

**Hardware Setup**

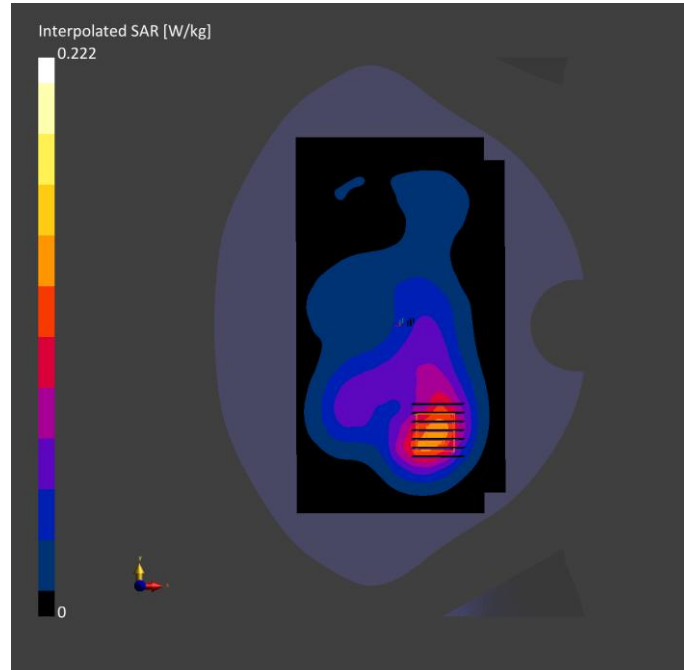
Phantom	TSL, Measured Date	Probe, Calibration Date	DAE, Calibration Date
Twin-SAM V5.0 (30deg probe tilt) - 1859	HBBL-600-10000 2024-03-07	EX3DV4 - SN7607, 2023-07-04	DAE4 Sn878, 2023-03-23

**Scan Setup**

	Area Scan	Zoom Scan
Grid Extents [mm]	120.0 x 216.0	30.0 x 30.0 x 30.0
Grid Steps [mm]	12.0 x 12.0	5.0 x 5.0 x 5.0
Sensor Surface [mm]	3.0	1.4
Graded Grid	Yes	Yes
Grading Ratio	1.5	1.5
MAIA	Y	Y
Surface	VMS + 6p	VMS + 6p
Detection		
Scan Method	Measured	Measured

**Measurement Results**

	Area Scan	Zoom Scan
Date	2024-03-07	2024-03-07
psSAR1g [W/kg]	0.058	0.060
psSAR10g [W/kg]	0.029	0.030
Power Drift [dB]	-0.07	0.03
Power Scaling	Disabled	Disabled
Scaling Factor [dB]		
TSL Correction	No correction	No correction
M2/M1 [%]		50.8
Dist 3dB Peak [mm]		13.6



**Meas.88 Body Plane with Top Edge 0mm on 39 Channel in Bluetooth mode with Antenna 13**

**Device under Test Properties**

Model, Manufacturer	Dimensions [mm]	DUT Type
Device,	165.0 x 75.0 x 8.0	Phone

**Exposure Conditions**

Phantom Section, TSL	Position, Test Distance [mm]	Band	Group, UID	Frequency [MHz], Channel Number	Conversion Factor	TSL Conductivity [S/m]	TSL Permittivity	Ambient Temperature [°C]	Liquid Temperature [°C]
Flat, HSL	EDGE, TOP, 0.00	ISM, 2.4 GHz Band	Bluetooth, 10032-CAA	2441.0, 39	7.47	1.82	38.2	22.2	21.9

**Hardware Setup**

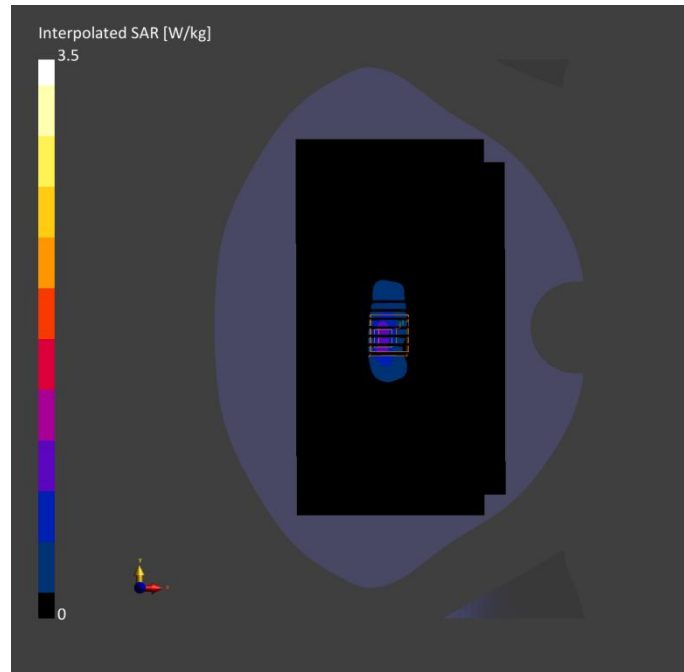
Phantom	TSL, Measured Date	Probe, Calibration Date	DAE, Calibration Date
Twin-SAM V5.0 (30deg probe tilt) - 1859	HBBL-600-10000 2024-03-07	EX3DV4 - SN7607, 2023-07-04	DAE4 Sn878, 2023-03-23

**Scan Setup**

	Area Scan	Zoom Scan
Grid Extents [mm]	120.0 x 216.0	30.0 x 30.0 x 30.0
Grid Steps [mm]	12.0 x 12.0	5.0 x 5.0 x 5.0
Sensor Surface [mm]	3.0	1.4
Graded Grid	Yes	Yes
Grading Ratio	1.5	1.5
MAIA	N/A	N/A
Surface Detection	VMS + 6p	VMS + 6p
Scan Method	Measured	Measured

**Measurement Results**

	Area Scan	Zoom Scan
Date	2024-03-07	2024-03-07
psSAR1g [W/kg]	0.791	1.20
psSAR10g [W/kg]	0.348	0.396
Power Drift [dB]	0.01	0.11
Power Scaling	Disabled	Disabled
Scaling Factor [dB]		
TSL Correction	No correction	No correction
M2/M1 [%]		25.3
Dist 3dB Peak [mm]		4.0



## **ANNEX D EUT EXTERNAL PHOTOS**

Please refer the document “BL-SZ2410450-AW.pdf”.

## **ANNEX E SAR TEST SETUP PHOTOS**

Please refer the document “BL-SZ2410450-AS.pdf”.

## **ANNEX F CALIBRATION REPORT**

Please refer the document “BL-SZ2410450-AC.pdf”.

## Statement

1. The laboratory guarantees the scientificity, accuracy and impartiality of the test, and is responsible for all the information in the report, except the information provided by the customer. The customer is responsible for the impact of the information provided on the validity of the results.
2. The report without China inspection body and laboratory Mandatory Approval (CMA) mark has no effect of proving to the society.
3. For the report with CNAS mark or A2LA mark, the items marked with "☆" are not within the accredited scope.
4. This report is invalid if it is altered, without the signature of the testing and approval personnel, or without the "inspection and testing dedicated stamp" or test report stamp.
5. The test data and results are only valid for the tested samples provided by the customer.
6. This report shall not be partially reproduced without the written permission of the laboratory.
7. Any objection shall be raised to the laboratory within 30 days after receiving the report.

--END OF REPORT--