

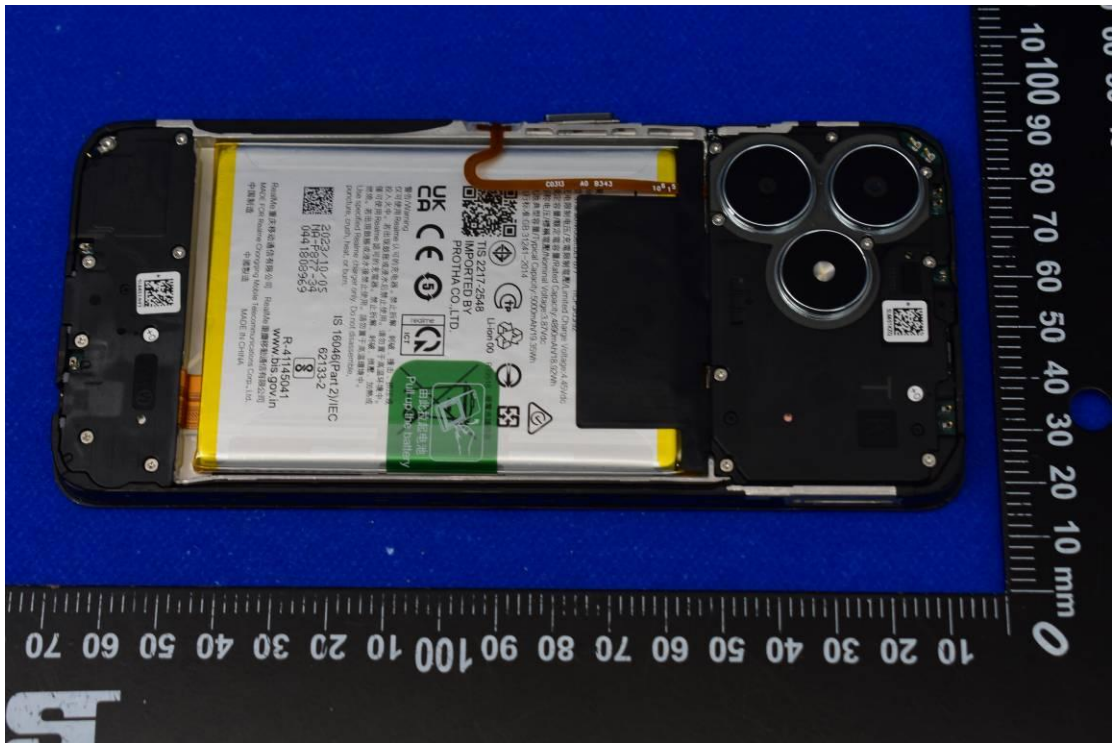
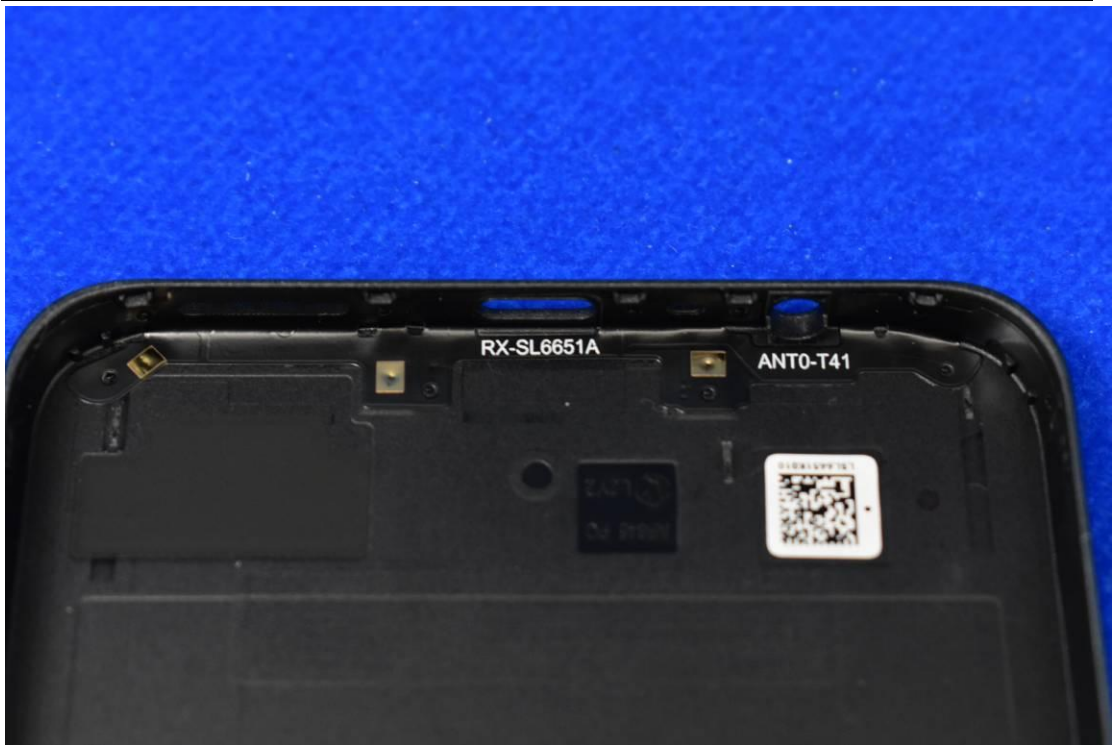
FCC ID: 2AUYFRMX3834

## Internal Photos

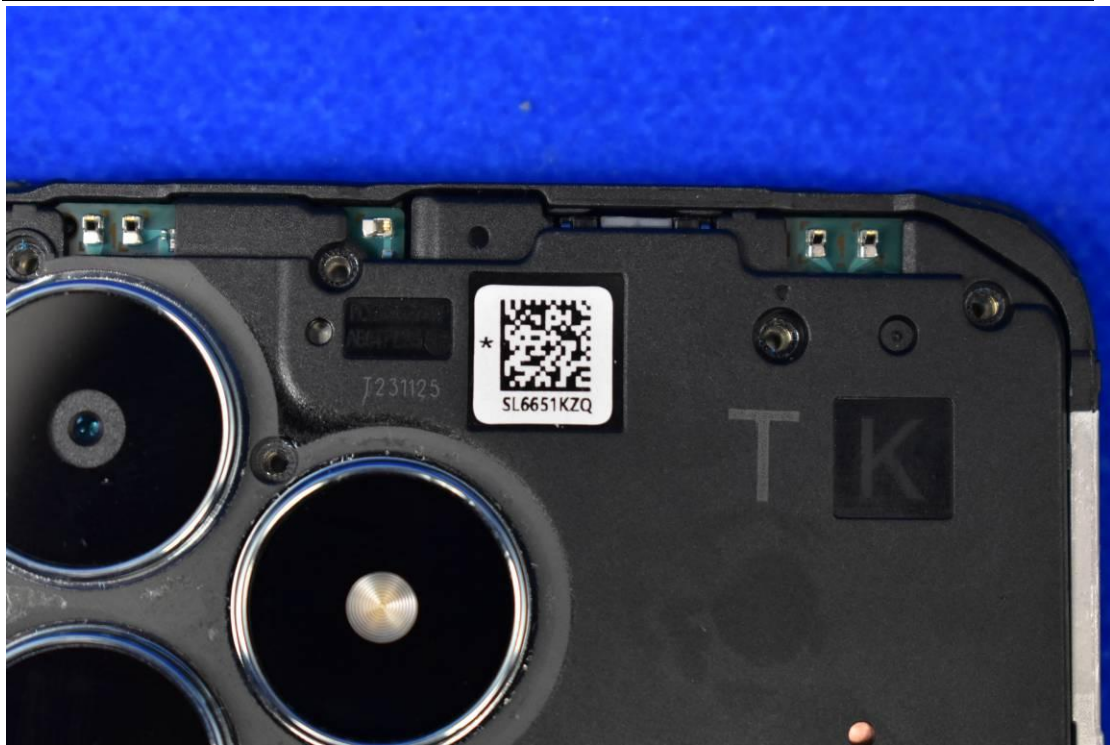
### 1. EUT uncover view

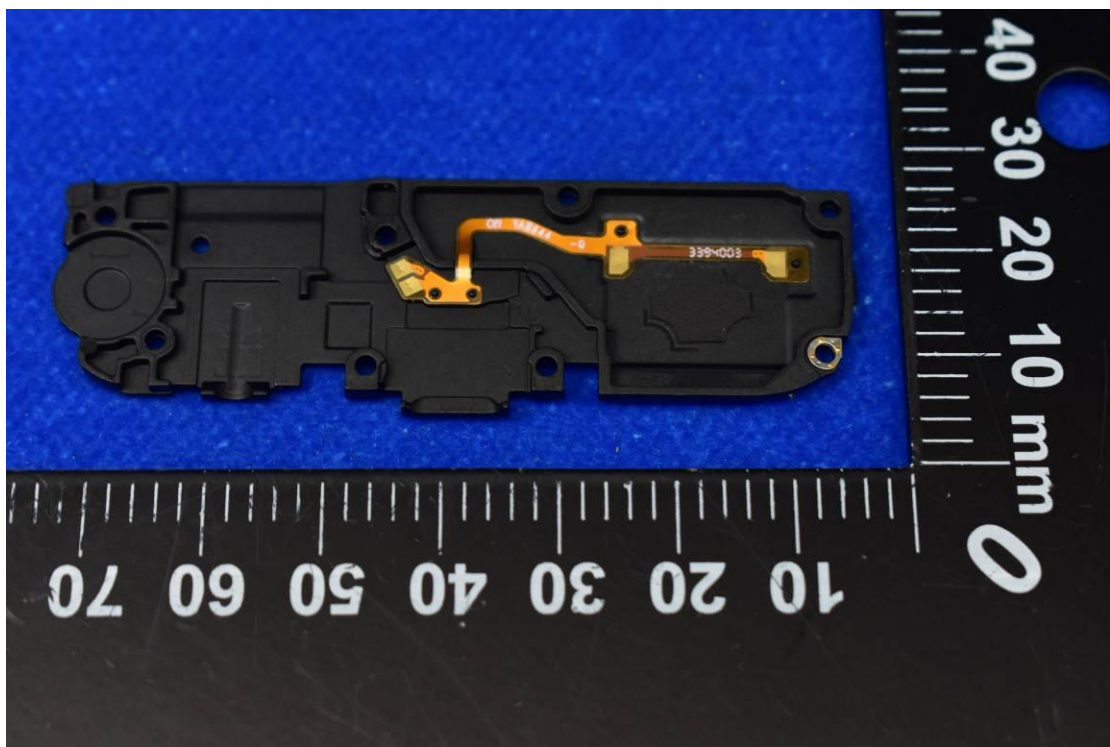
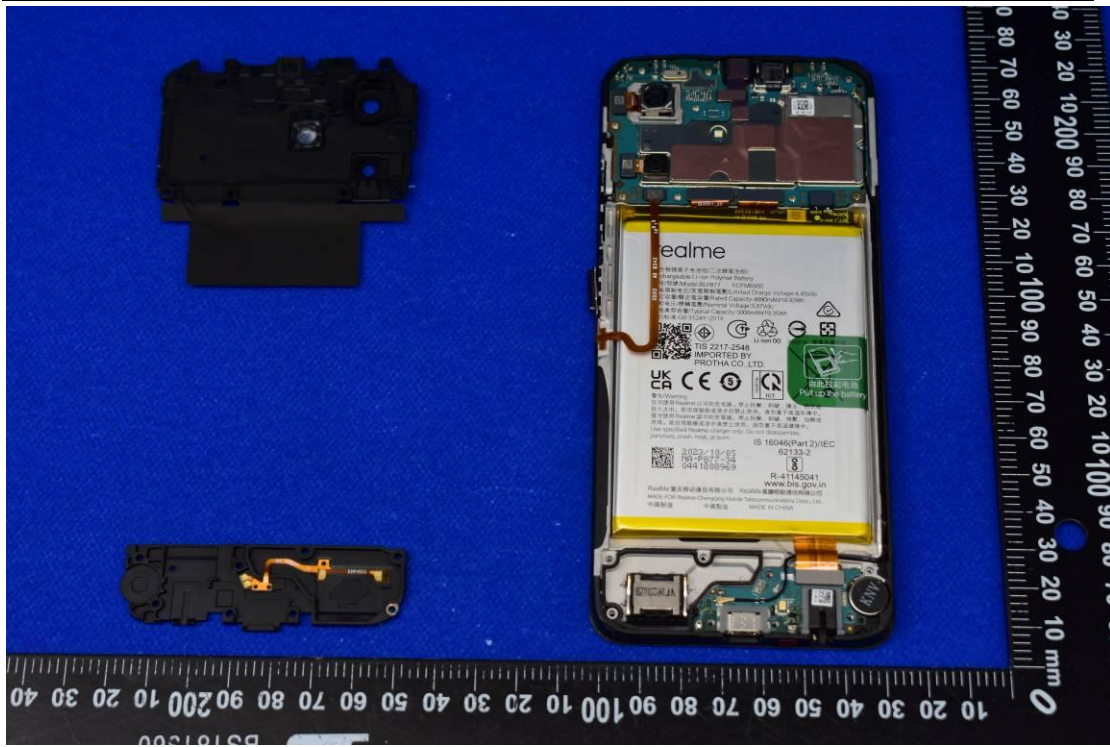






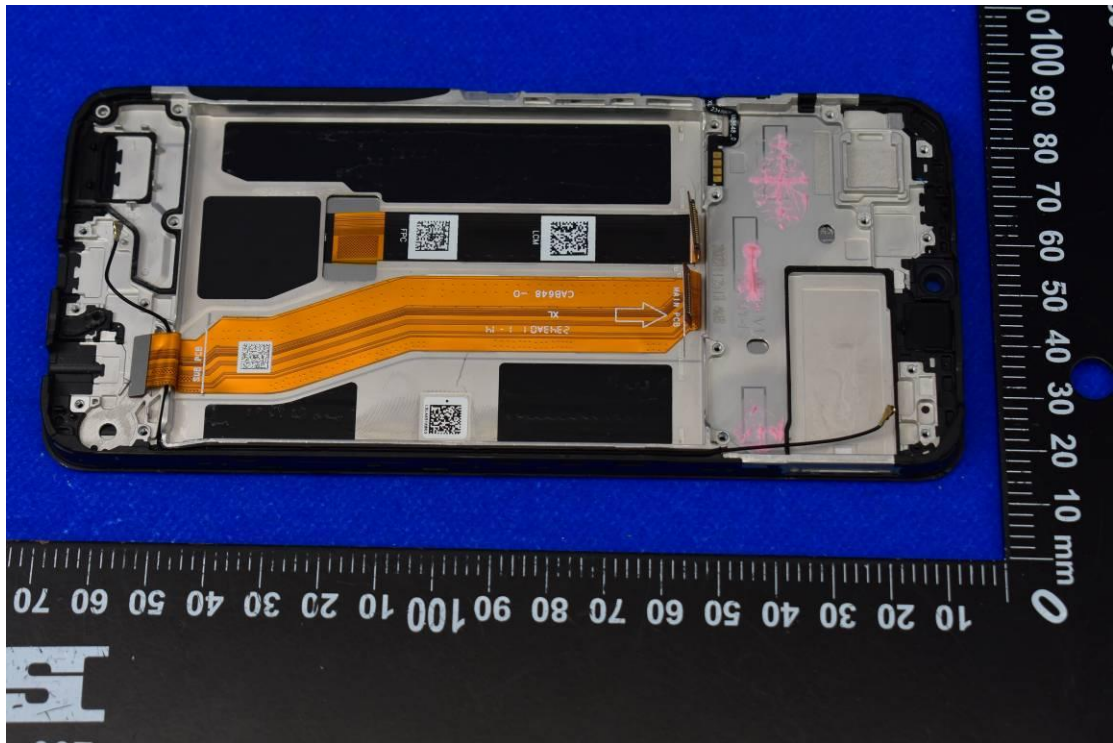
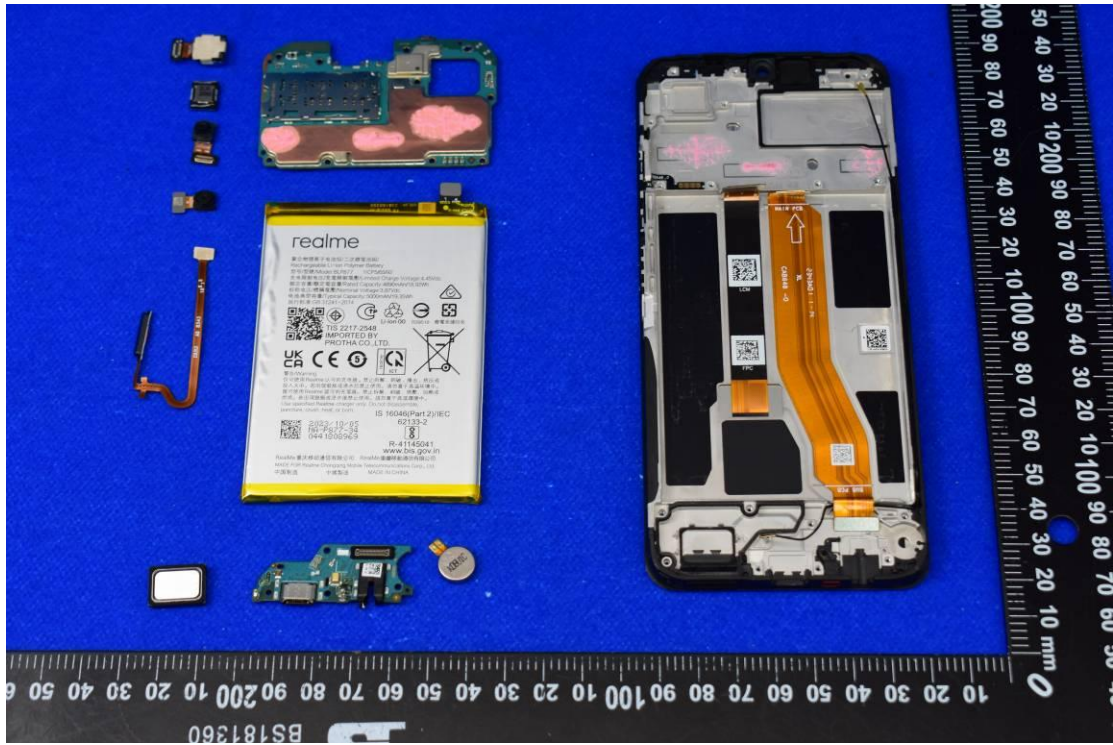




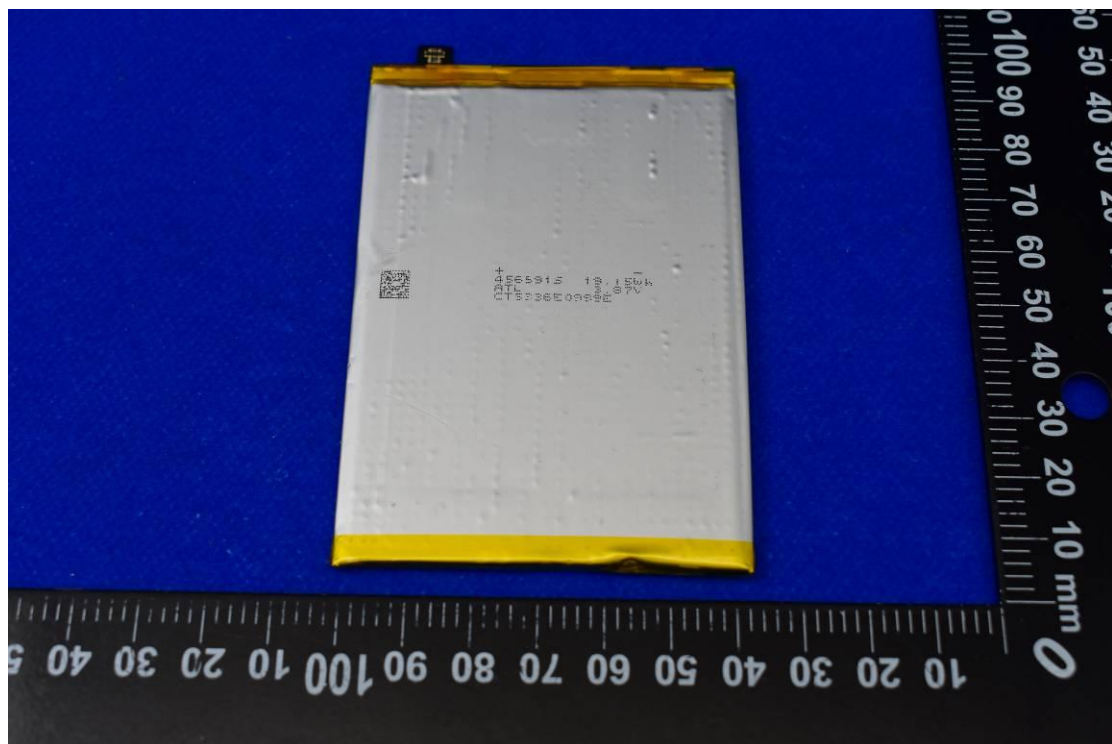














realme

聚合物锂离子电池组/二次锂电池组/  
Rechargeable Li-ion Polymer Battery  
型号/型號/Model: BLP877 11CP5/65/92  
充电限制电压/充電限制電壓/Limited Charge Voltage: 4.45Vdc  
额定容量/額定電容量/Rated Capacity: 4890mAh/18.92Wh  
标称电压/標稱電壓/Nominal Voltage: 3.87Vdc  
电池典型容量/Typical Capacity: 5000mAh/19.35Wh  
执行标准: GB 31241-2014



TIS 2217-2548  
IMPORTED BY  
PROTHA CO., LTD.

Li-ion 00 R39518 廢電池請回收



警告/Warning

仅可使用 Realme 认可的充电器。禁止拆解、刺破、撞击、挤压或投入火中。若出现鼓胀或浸水后禁止使用。请勿置于高温环境中。  
僅可使用 Realme 認可的充電器。禁止拆解、刺破、擠壓、加熱或燃燒。若出現鼓脹或浸水後禁止使用。請勿置於高溫環境中。  
Use specified Realme charger only. Do not disassemble, puncture, crush, heat, or burn.

IS 16046(Part 2)/IEC  
62133-2



2023/10/05  
NA-P877-34  
0441808969

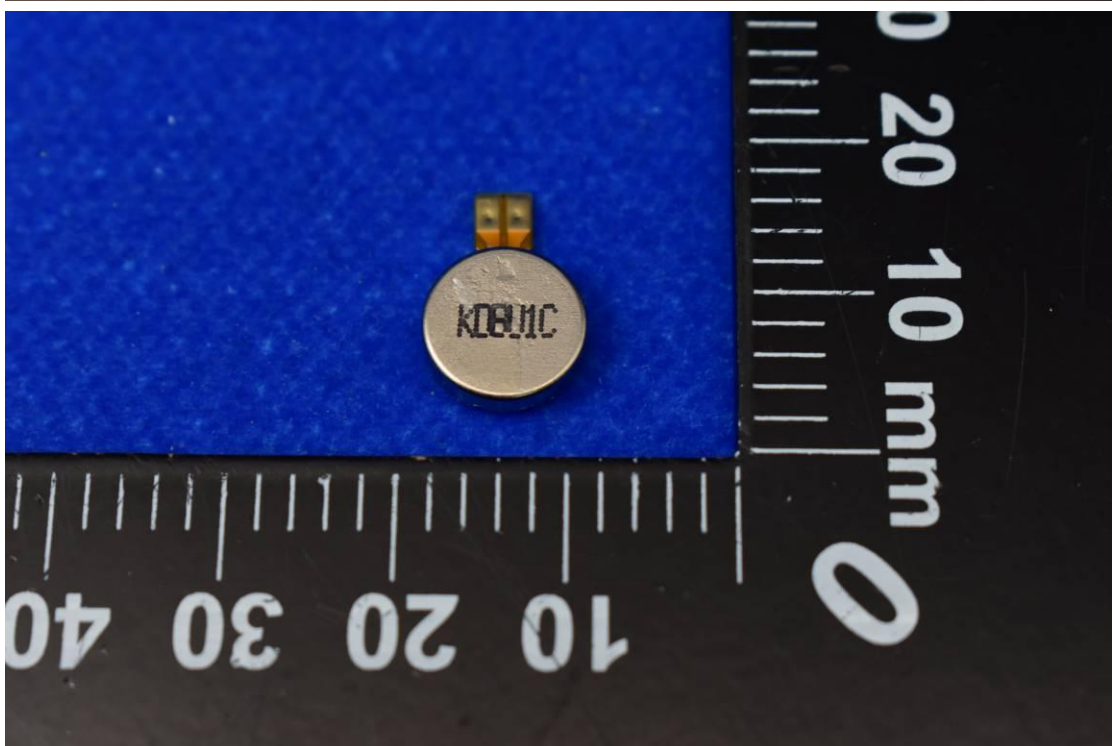


R-41145041  
[www.bis.gov.in](http://www.bis.gov.in)

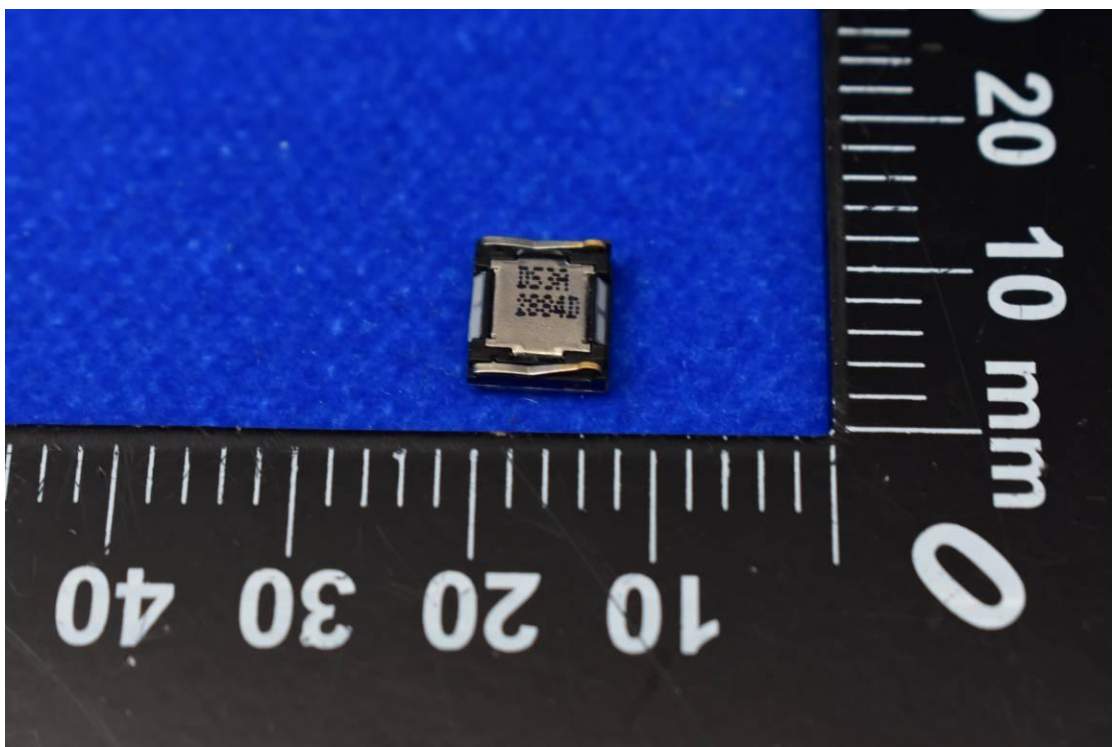
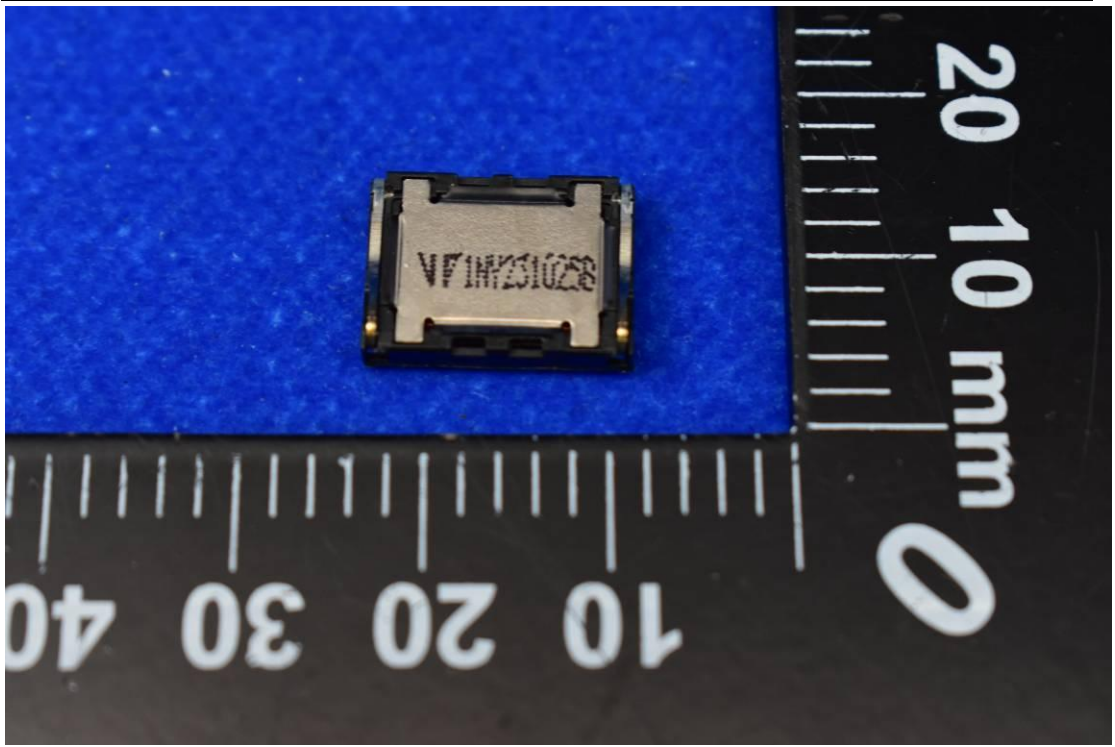
RealMe 重庆移动通信有限公司 RealMe 重慶移動通信有限公司  
MADE FOR Realme Chongqing Mobile Telecommunications Corp., Ltd.  
中国制造 中國製造 MADE IN CHINA

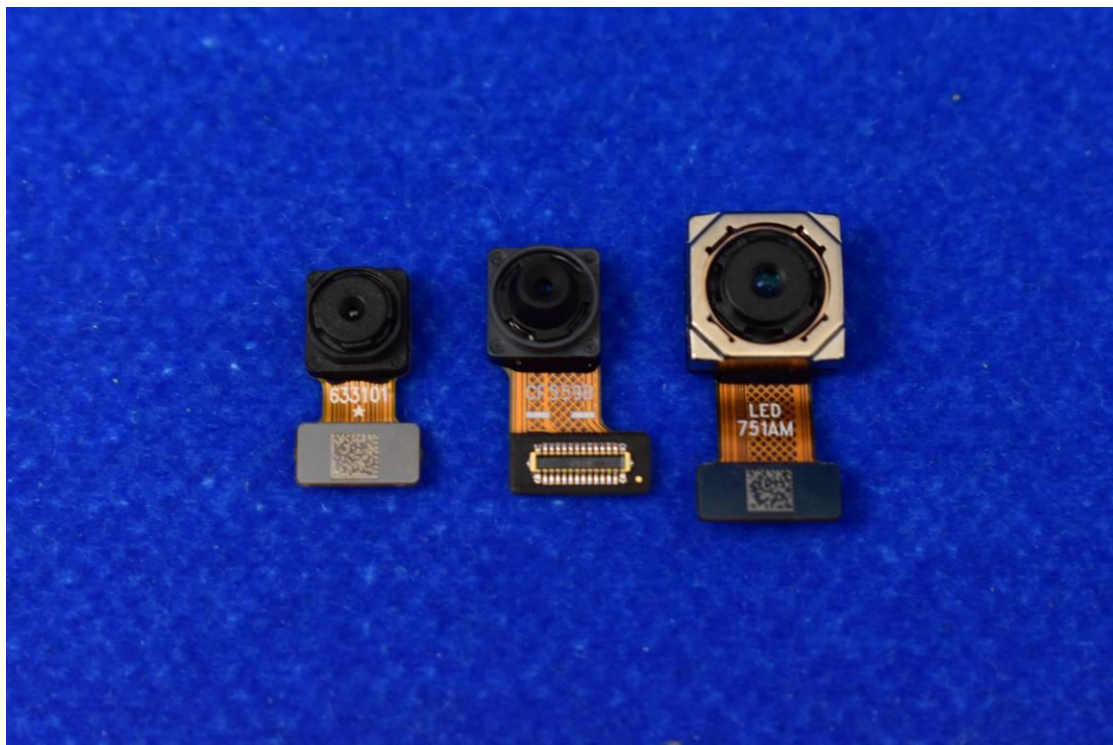
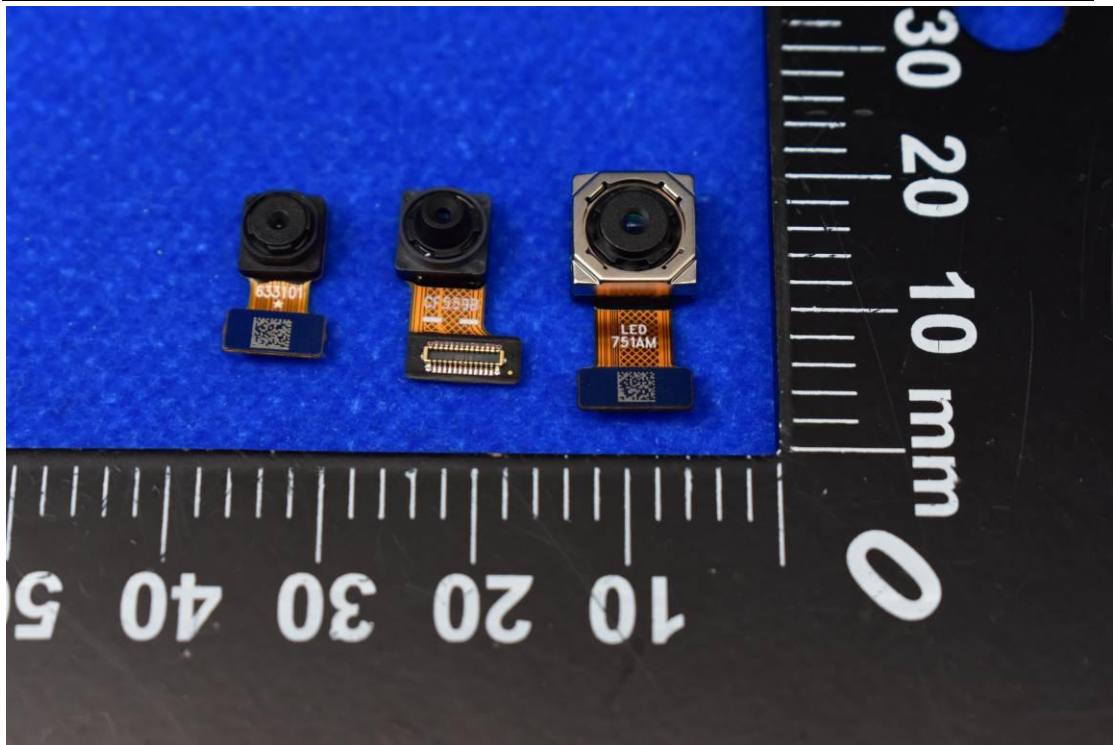


4565915 10.1.15  
BTL  
CT503667 030000

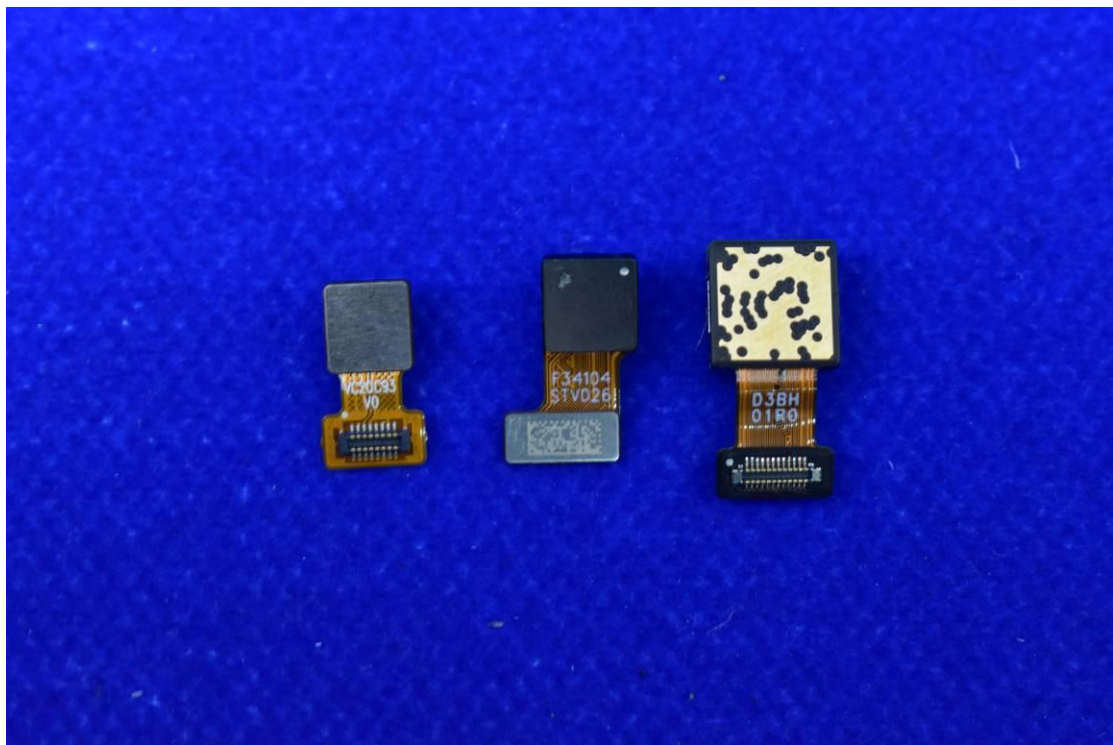
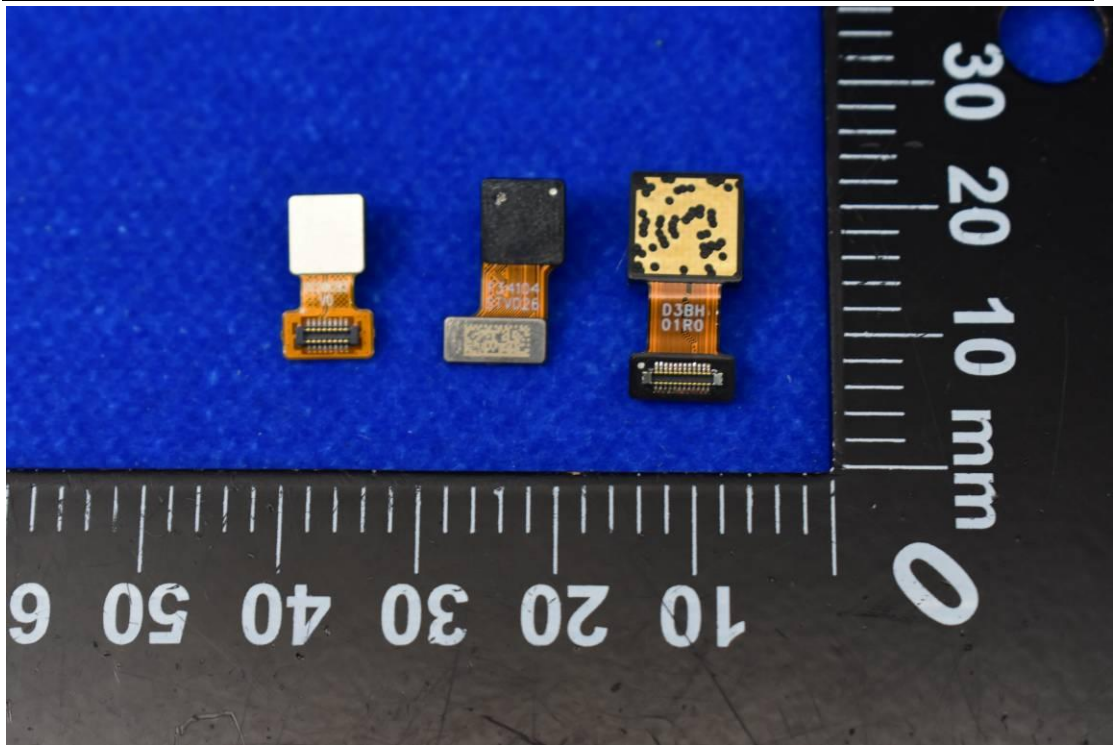


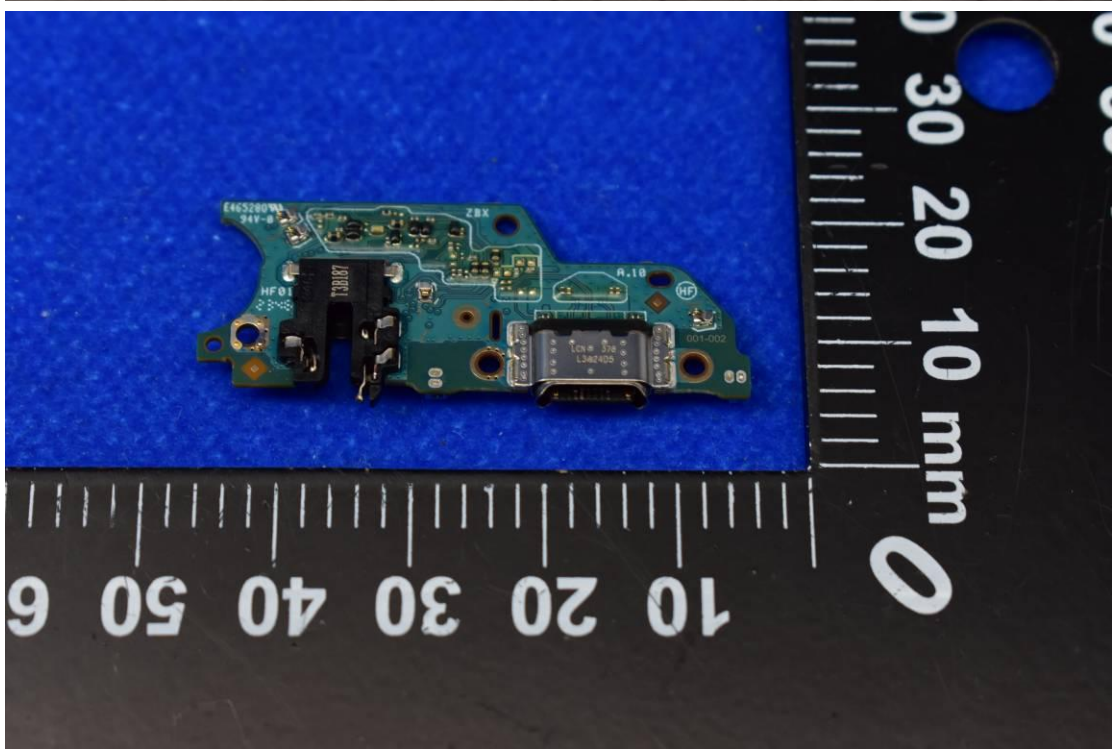
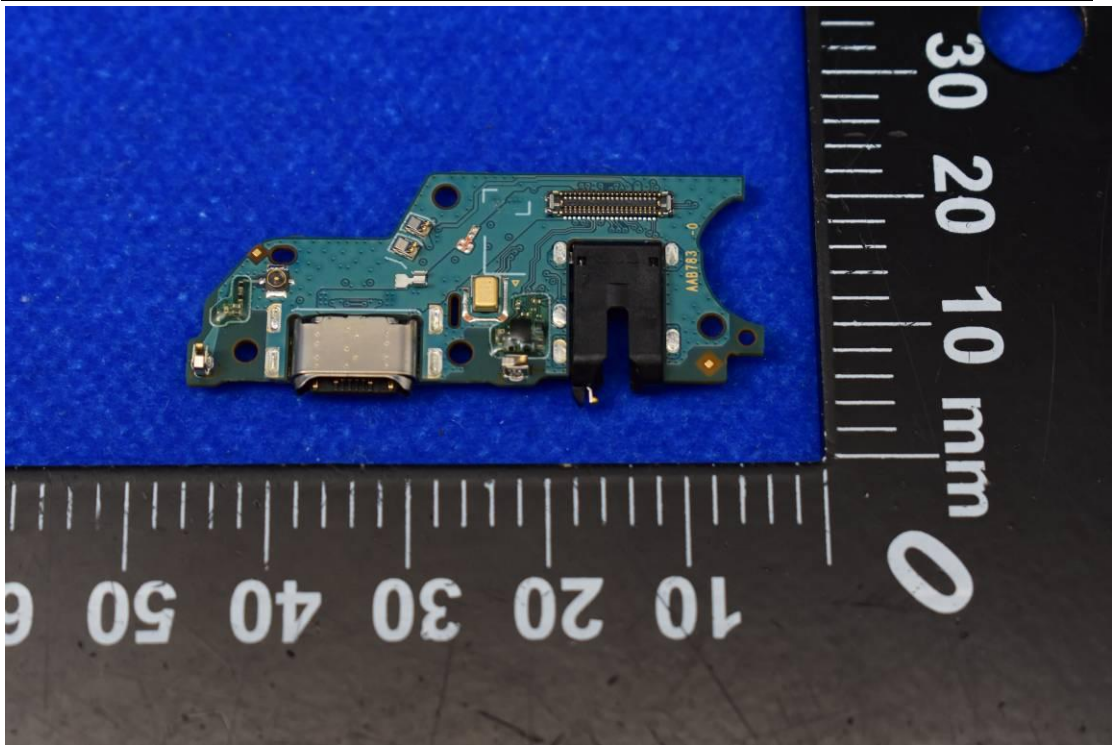




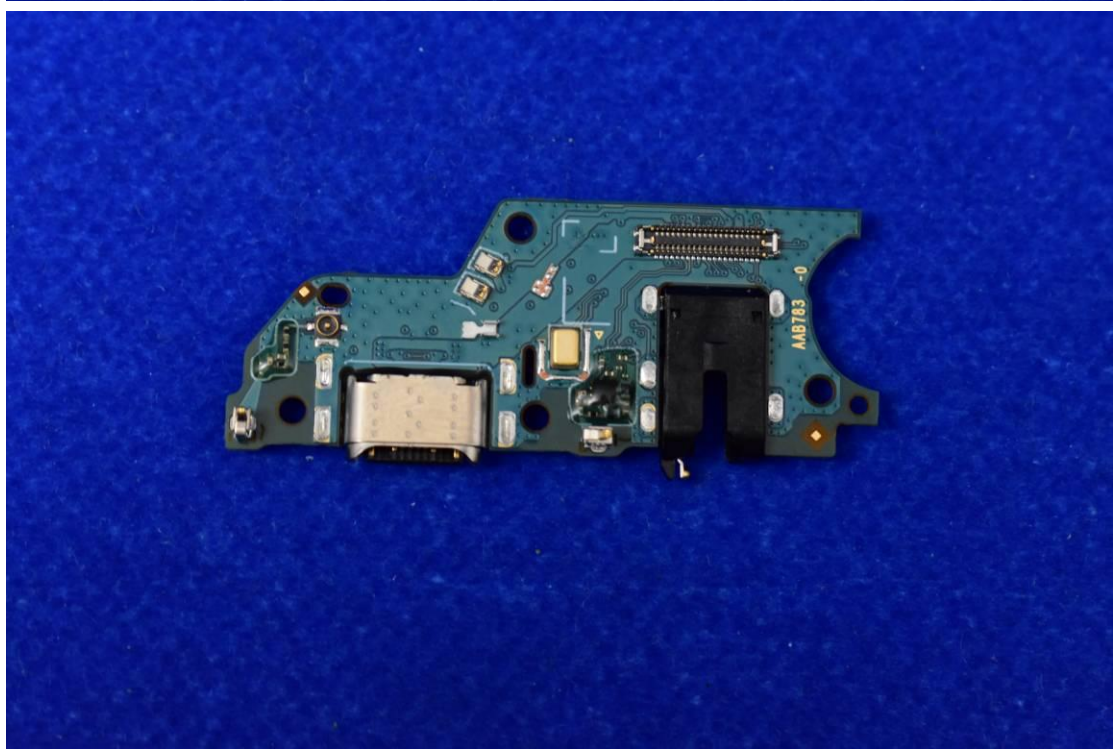
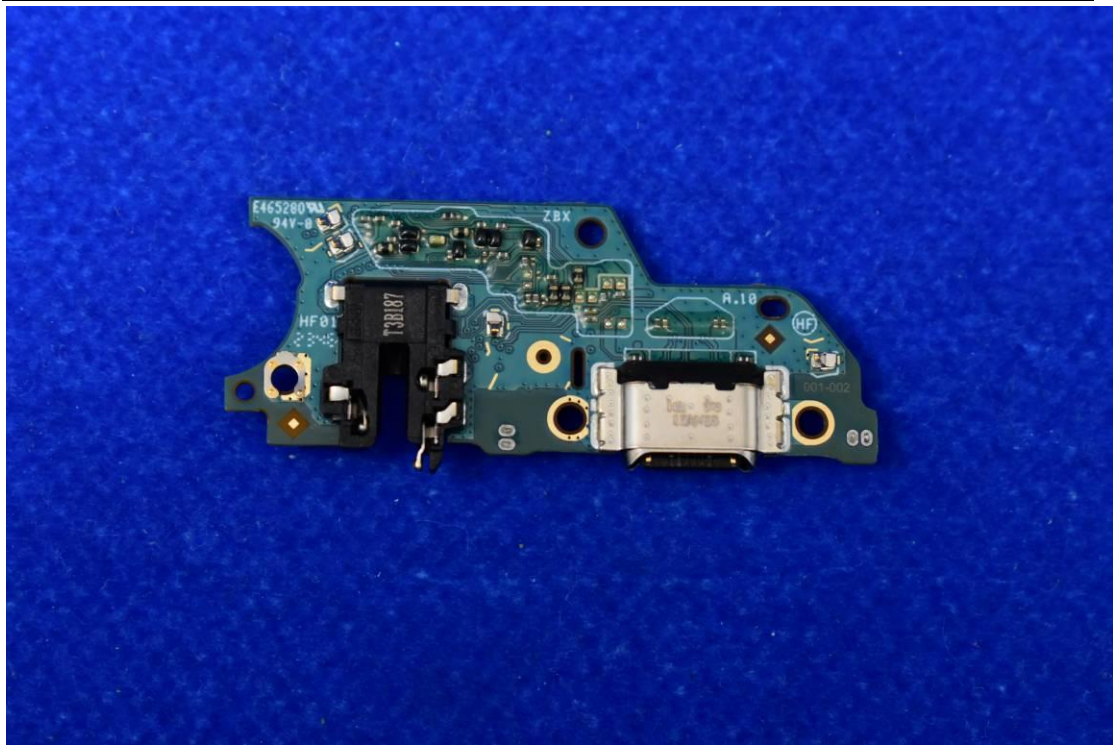


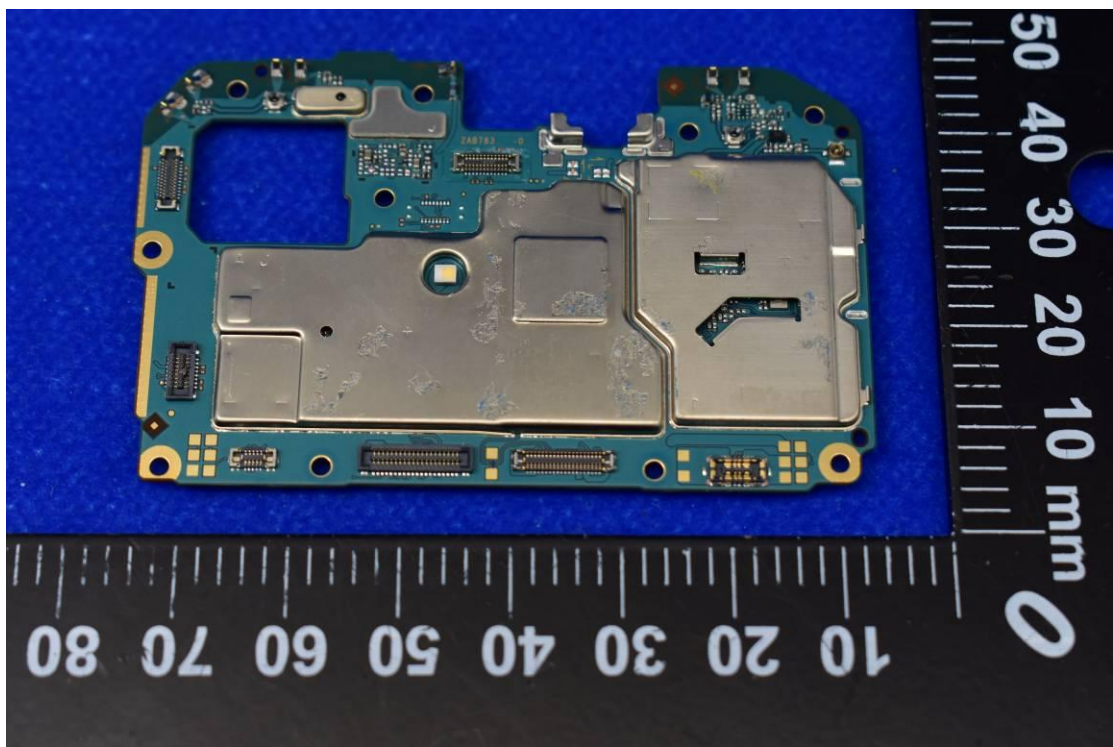
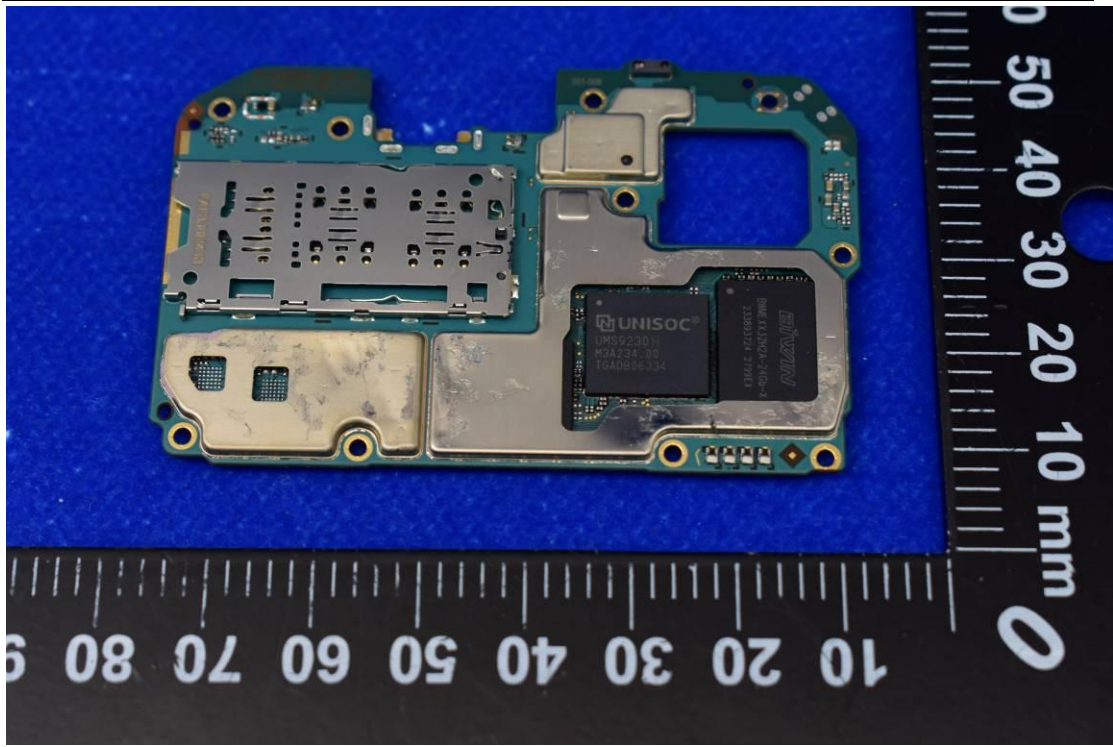




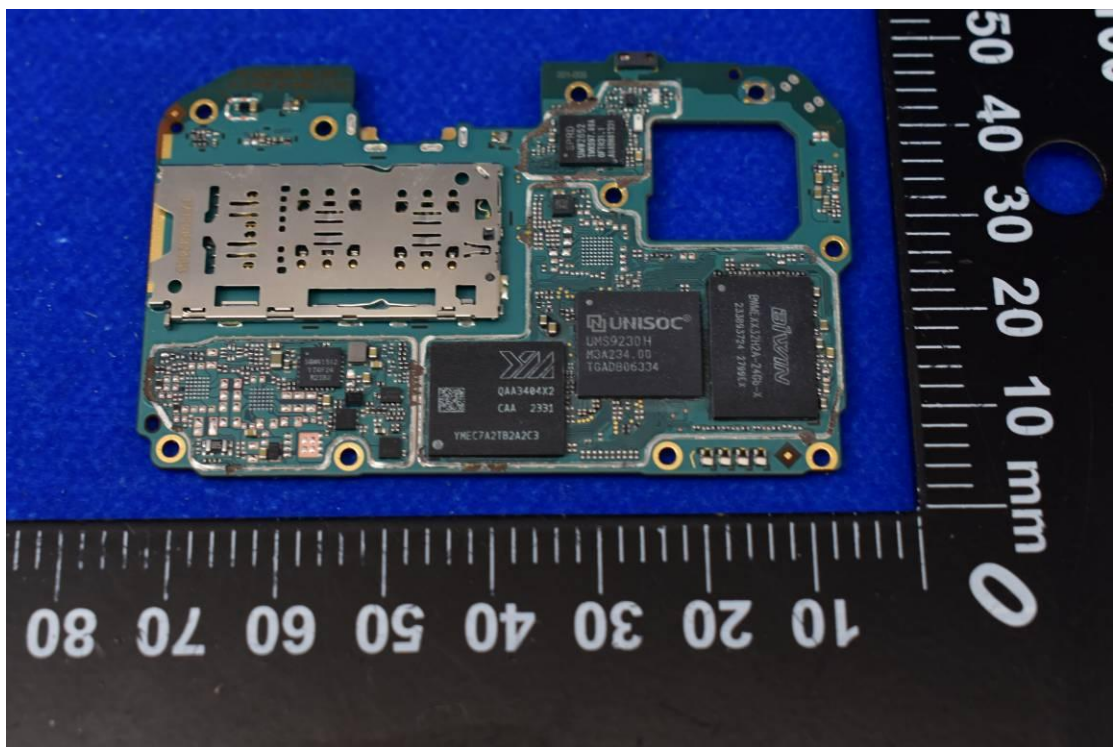
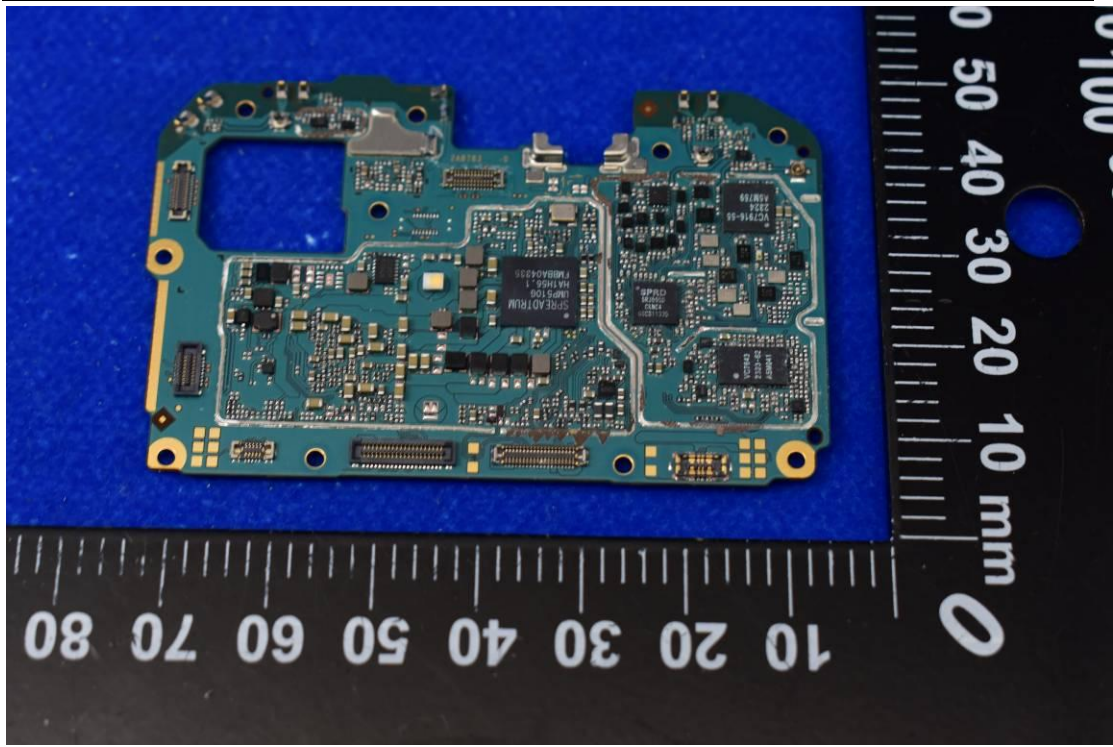


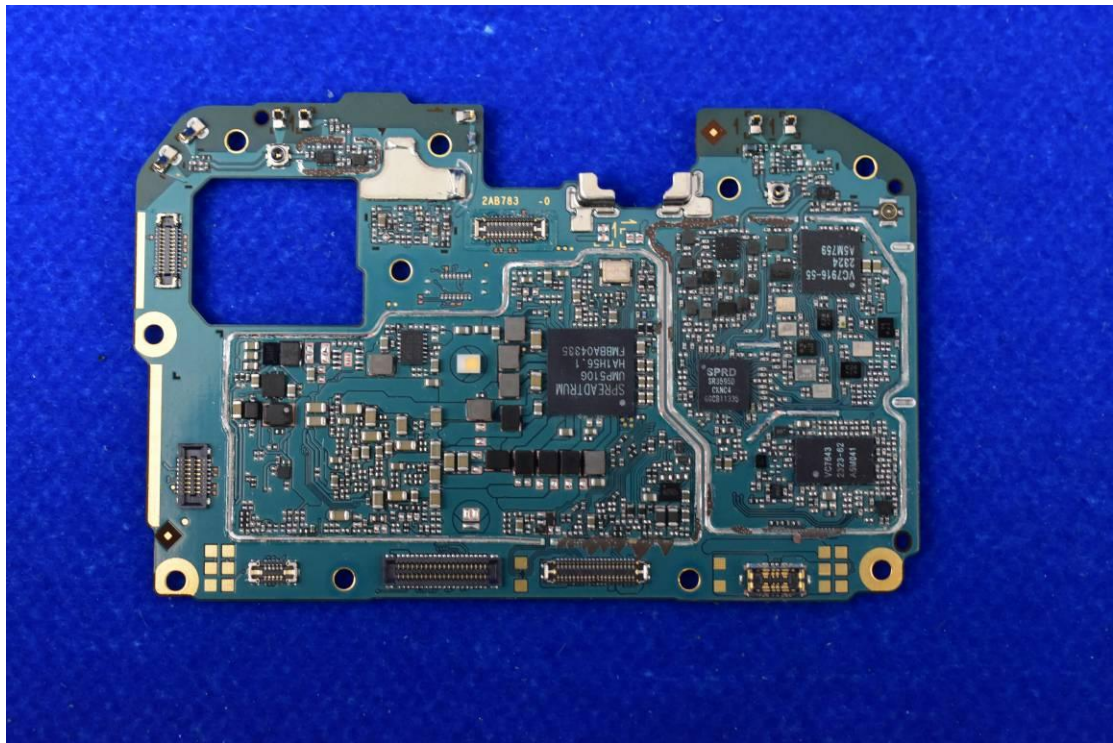
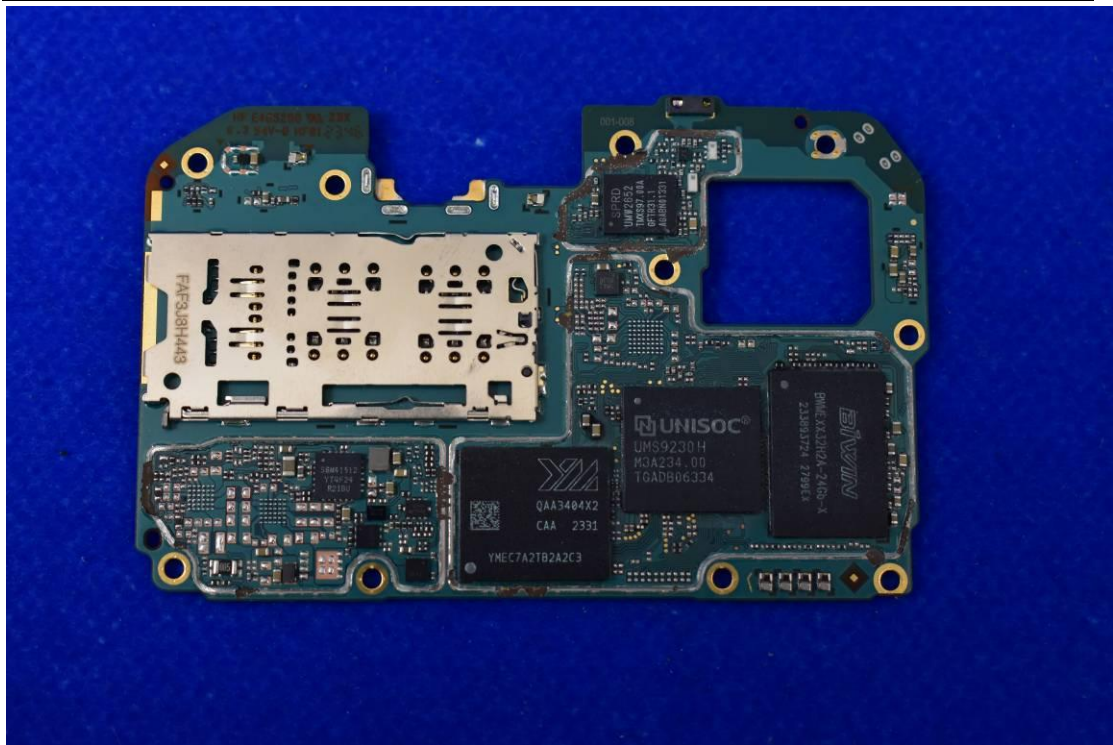














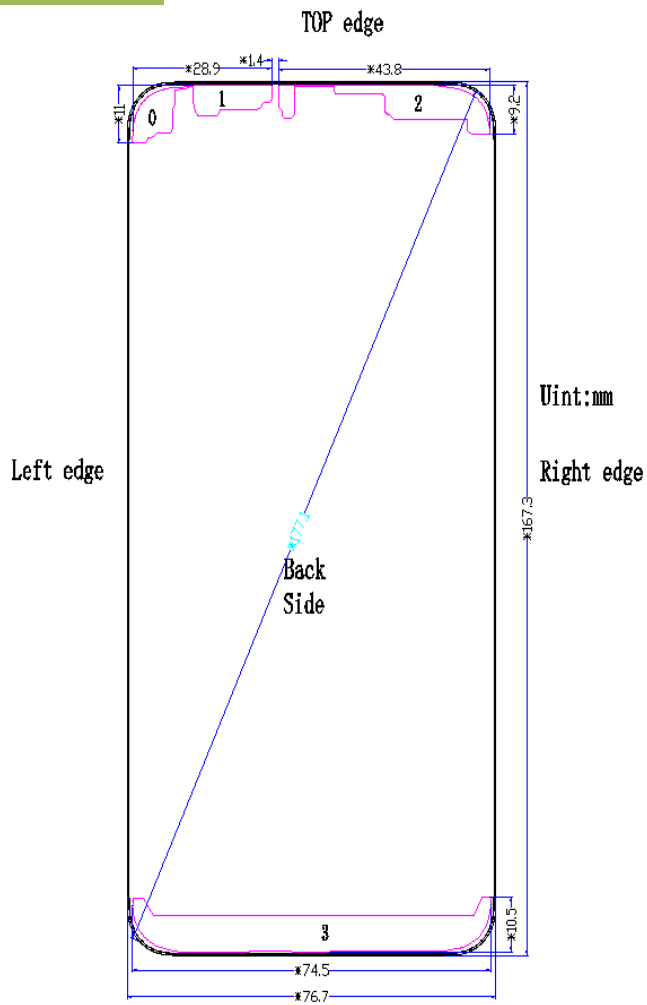
## 2. Antenna view



ANT0:WiFi 2.4G+5G+BT

ANT1:GPS

ANT2:  
Upper antenna:  
GSM: 850/900/1800/1900MHz  
WCDMA: Bands 1/2/4/5/8  
FDD-LTE: Bands  
1/2/3/4/5/7/8/13/20/28/66  
TD-LTE: Bands 38/40/41 (2535-  
2655MHz)



ANT3:  
Lower antenna:  
GSM: 850/900/1800/1900MHz  
WCDMA: Bands 1/2/4/5/8  
FDD-LTE: Bands  
1/2/3/4/5/7/8/13/20/28/66  
TD-LTE: Bands 38/40/41 (2535-  
2655MHz)