



REPORT No.: SZ23040012S01

Annex D Plots of Maximum SAR Test Results

GSM850_GPRS(2 TX slots)_Right Cheek_Ch189_Ant 2

Communication System: UID 0, GSM850(class 10) (0); Frequency: 836.4 MHz; Duty Cycle: 1:4.15
Medium: HSL_900 Medium parameters used: $f = 836.4$ MHz; $\sigma = 0.958$ S/m; $\epsilon_r = 40.843$; $\rho = 1000$ kg/m³
Ambient Temperature : 23.2 °C; Liquid Temperature : 22.1 °C

DASY5 Configuration:

- Probe: EX3DV4 - SN7608; ConvF(10.45, 10.45, 10.45) @ 836.4 MHz; Calibrated: 2023.3.15
- Sensor-Surface: 2mm (Mechanical Surface Detection)
- Electronics: DAE4 Sn480; Calibrated: 2022.6.22
- Phantom: SAM 2; Type: QD000P40CC; Serial: TP:1464
- Measurement SW: DASY52, Version 52.10 (4); SEMCAD X Version 14.6.14 (7501)

Ch189/Area Scan (71x81x1): Interpolated grid: dx=1.500 mm, dy=1.500 mm

Maximum value of SAR (interpolated) = 1.29 W/kg

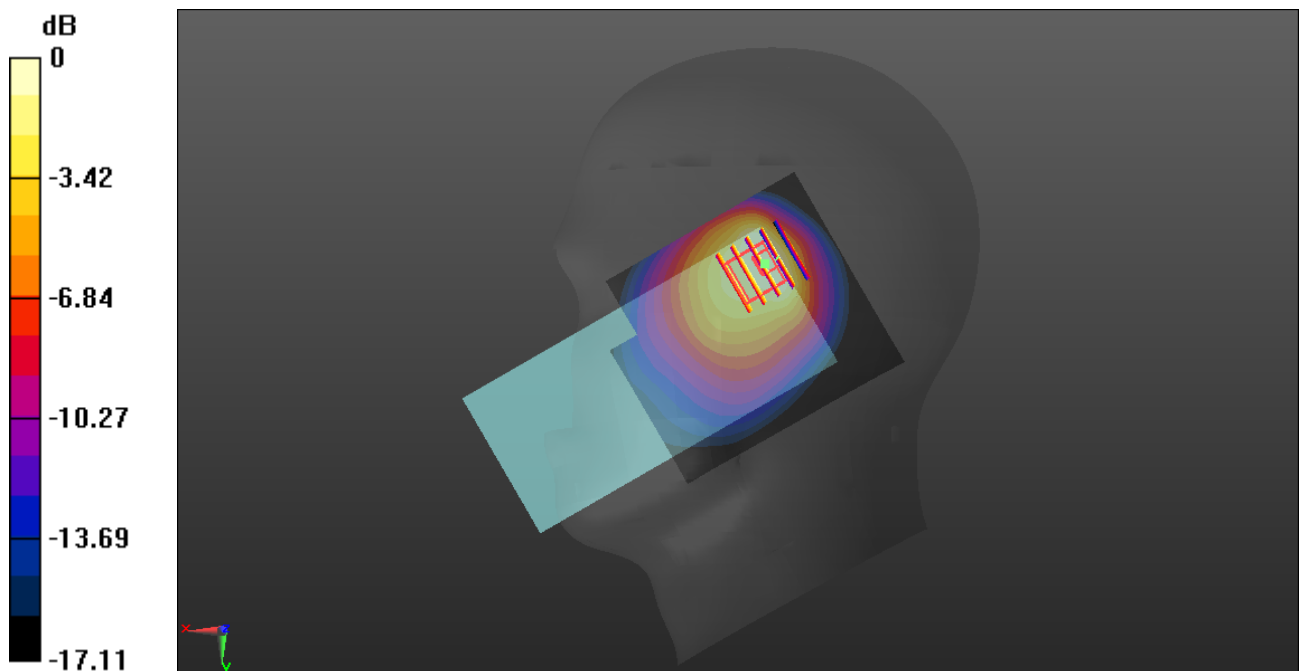
Ch189/Zoom Scan (5x5x7)/Cube 0: Measurement grid: dx=8mm, dy=8mm, dz=5mm

Reference Value = 21.42 V/m; Power Drift = 0.04 dB

Peak SAR (extrapolated) = 1.53 W/kg

SAR(1 g) = 0.733 W/kg; SAR(10 g) = 0.466 W/kg

Maximum value of SAR (measured) = 0.951 W/kg



0 dB = 0.951 W/kg

GSM1900_GPRS(3 TX slots)_Right Tilt_Ch661_Ant 2

Communication System: UID 0, GSM1900(class 11) (0); Frequency: 1880 MHz; Duty Cycle: 1:2.77

Medium: HSL_1800 Medium parameters used: $f = 1880$ MHz; $\sigma = 1.321$ S/m; $\epsilon_r = 39.882$; $\rho = 1000$ kg/m³

Ambient Temperature : 23.2 °C; Liquid Temperature : 22.1 °C

DASY5 Configuration:

- Probe: EX3DV4 - SN7608; ConvF(8.11, 8.11, 8.11) @ 1880 MHz; Calibrated: 2023.3.15
- Sensor-Surface: 2mm (Mechanical Surface Detection)
- Electronics: DAE4 Sn480; Calibrated: 2022.6.22
- Phantom: SAM 2; Type: QD000P40CC; Serial: TP:1464
- Measurement SW: DASY52, Version 52.10 (4); SEMCAD X Version 14.6.14 (7501)

Ch661/Area Scan (71x81x1): Interpolated grid: dx=1.500 mm, dy=1.500 mm

Maximum value of SAR (interpolated) = 0.513 W/kg

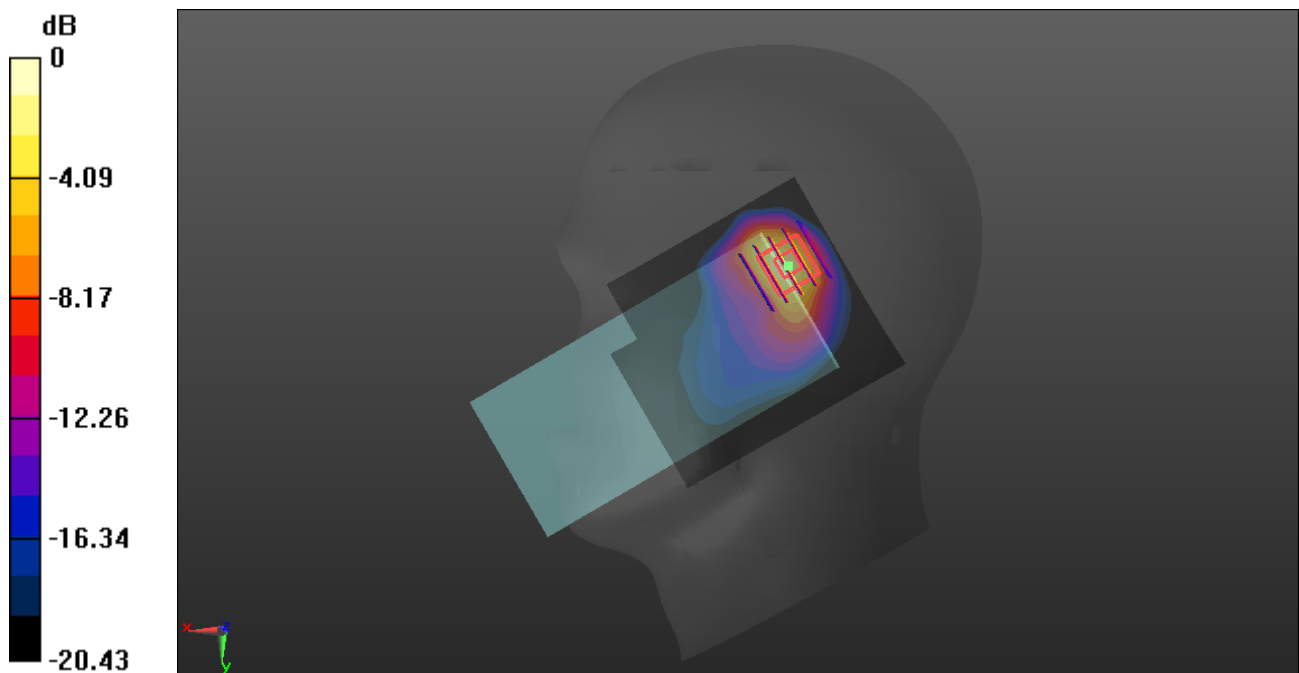
Ch661/Zoom Scan (5x5x7)/Cube 0: Measurement grid: dx=8mm, dy=8mm, dz=5mm

Reference Value = 11.03 V/m; Power Drift = 0.15 dB

Peak SAR (extrapolated) = 0.827 W/kg

SAR(1 g) = 0.402 W/kg; SAR(10 g) = 0.178 W/kg

Maximum value of SAR (measured) = 0.666 W/kg



0 dB = 0.666 W/kg

WCDMA Band II_RMC 12.2Kbps_Right Tilt_Ch9400_Ant 2

Communication System: UID 0, UMTS-FDD (0); Frequency: 1880 MHz; Duty Cycle: 1:1

Medium: HSL_1800 Medium parameters used: $f = 1880$ MHz; $\sigma = 1.366$ S/m; $\epsilon_r = 40.167$; $\rho = 1000$ kg/m³

Ambient Temperature : 23.2 °C; Liquid Temperature : 22.1 °C

DASY5 Configuration:

- Probe: EX3DV4 - SN7608; ConvF(8.11, 8.11, 8.11) @ 1880 MHz; Calibrated: 2023.3.15
- Sensor-Surface: 2mm (Mechanical Surface Detection)
- Electronics: DAE4 Sn480; Calibrated: 2022.6.22
- Phantom: SAM 2; Type: QD000P40CC; Serial: TP:1464
- Measurement SW: DASY52, Version 52.10 (4); SEMCAD X Version 14.6.14 (7501)

Ch9400/Area Scan (71x81x1): Interpolated grid: dx=1.500 mm, dy=1.500 mm

Maximum value of SAR (interpolated) = 0.555 W/kg

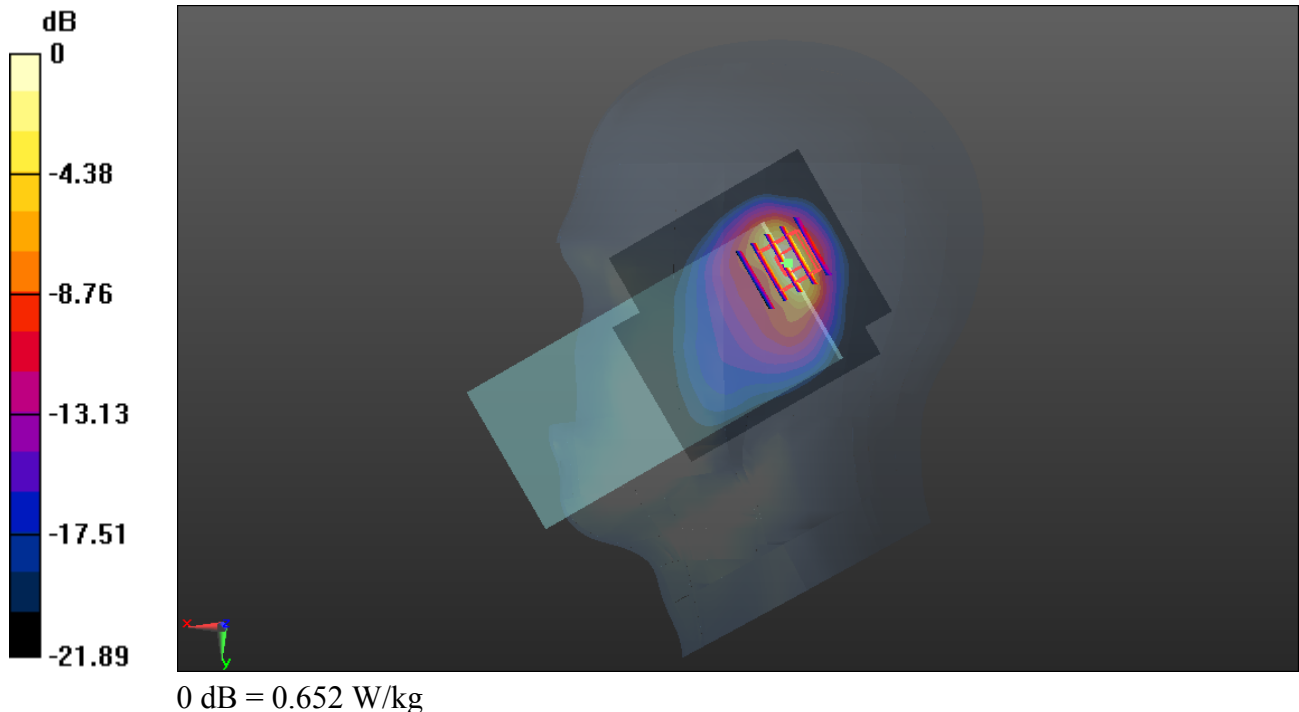
Ch9400/Zoom Scan (5x5x7)/Cube 0: Measurement grid: dx=8mm, dy=8mm, dz=5mm

Reference Value = 11.08 V/m; Power Drift = 0.05 dB

Peak SAR (extrapolated) = 0.884 W/kg

SAR(1 g) = 0.368 W/kg; SAR(10 g) = 0.165 W/kg

Maximum value of SAR (measured) = 0.652 W/kg



WCDMA Band IV_RMC 12.2Kbps_Right Tilt_Ch1413_Ant 2

Communication System: UID 0, UMTS-FDD (0); Frequency: 1732.6 MHz; Duty Cycle: 1:1
Medium: HSL_1800 Medium parameters used: $f = 1733$ MHz; $\sigma = 1.366$ S/m; $\epsilon_r = 41.367$; $\rho = 1000$ kg/m³
Ambient Temperature : 23.2 °C; Liquid Temperature : 22.1 °C

DASY5 Configuration:

- Probe: EX3DV4 - SN7608; ConvF(8.4, 8.4, 8.4) @ 1732.6 MHz; Calibrated: 2023.3.15
- Sensor-Surface: 2mm (Mechanical Surface Detection)
- Electronics: DAE4 Sn480; Calibrated: 2022.6.22
- Phantom: SAM 2; Type: QD000P40CC; Serial: TP:1464
- Measurement SW: DASY52, Version 52.10 (4); SEMCAD X Version 14.6.14 (7501)

Ch1413/Area Scan (71x81x1): Interpolated grid: dx=1.500 mm, dy=1.500 mm

Maximum value of SAR (interpolated) = 0.389 W/kg

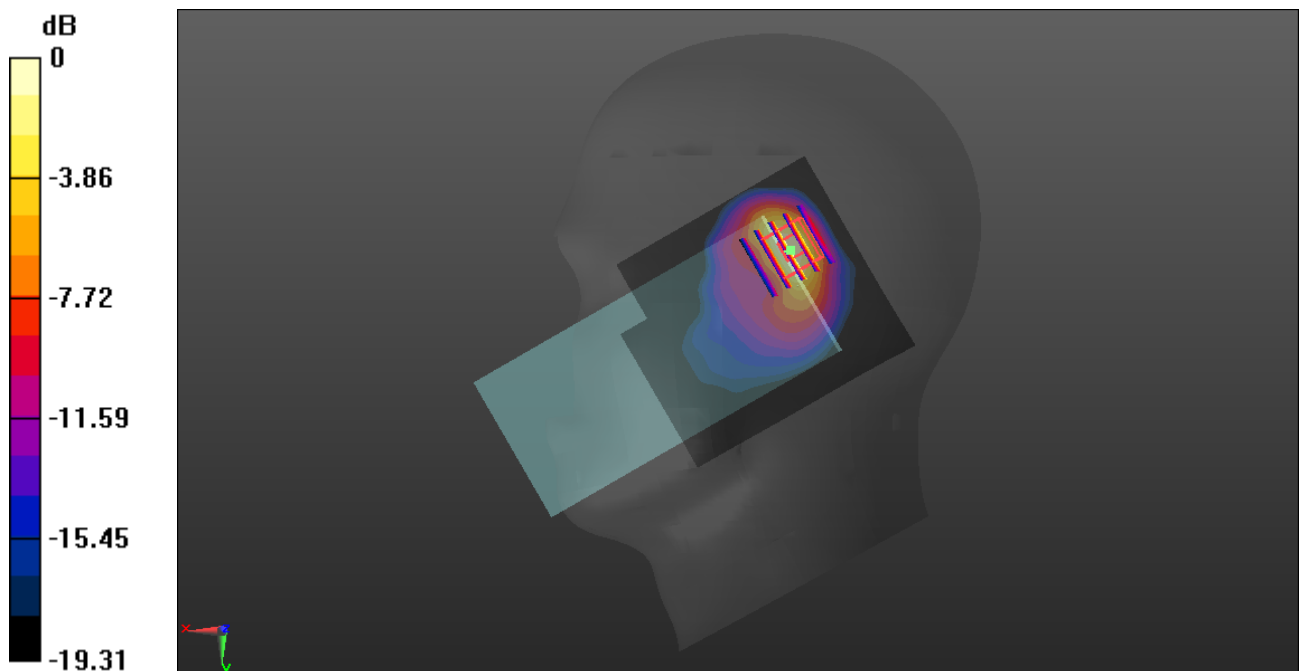
Ch1413/Zoom Scan (5x5x7)/Cube 0: Measurement grid: dx=8mm, dy=8mm, dz=5mm

Reference Value = 8.710 V/m; Power Drift = 0.07 dB

Peak SAR (extrapolated) = 0.503 W/kg

SAR(1 g) = 0.247 W/kg; SAR(10 g) = 0.112 W/kg

Maximum value of SAR (measured) = 0.391 W/kg



0 dB = 0.391 W/kg

WCDMA Band V_RMC 12.2Kbps_Right Cheek_Ch4182_Ant 2

Communication System: UID 0, UMTS-FDD (0); Frequency: 836.4 MHz; Duty Cycle: 1:1

Medium: HSL_900 Medium parameters used: $f = 836.4$ MHz; $\sigma = 0.958$ S/m; $\epsilon_r = 40.843$; $\rho = 1000$ kg/m³

Ambient Temperature : 23.2 °C; Liquid Temperature : 22.1 °C

DASY5 Configuration:

- Probe: EX3DV4 - SN7608; ConvF(10.45, 10.45, 10.45) @ 836.4 MHz; Calibrated: 2023.3.15
- Sensor-Surface: 2mm (Mechanical Surface Detection)
- Electronics: DAE4 Sn480; Calibrated: 2022.6.22
- Phantom: SAM 2; Type: QD000P40CC; Serial: TP:1464
- Measurement SW: DASY52, Version 52.10 (4); SEMCAD X Version 14.6.14 (7501)

Ch4182/Area Scan (71x81x1): Interpolated grid: dx=1.500 mm, dy=1.500 mm

Maximum value of SAR (interpolated) = 1.41 W/kg

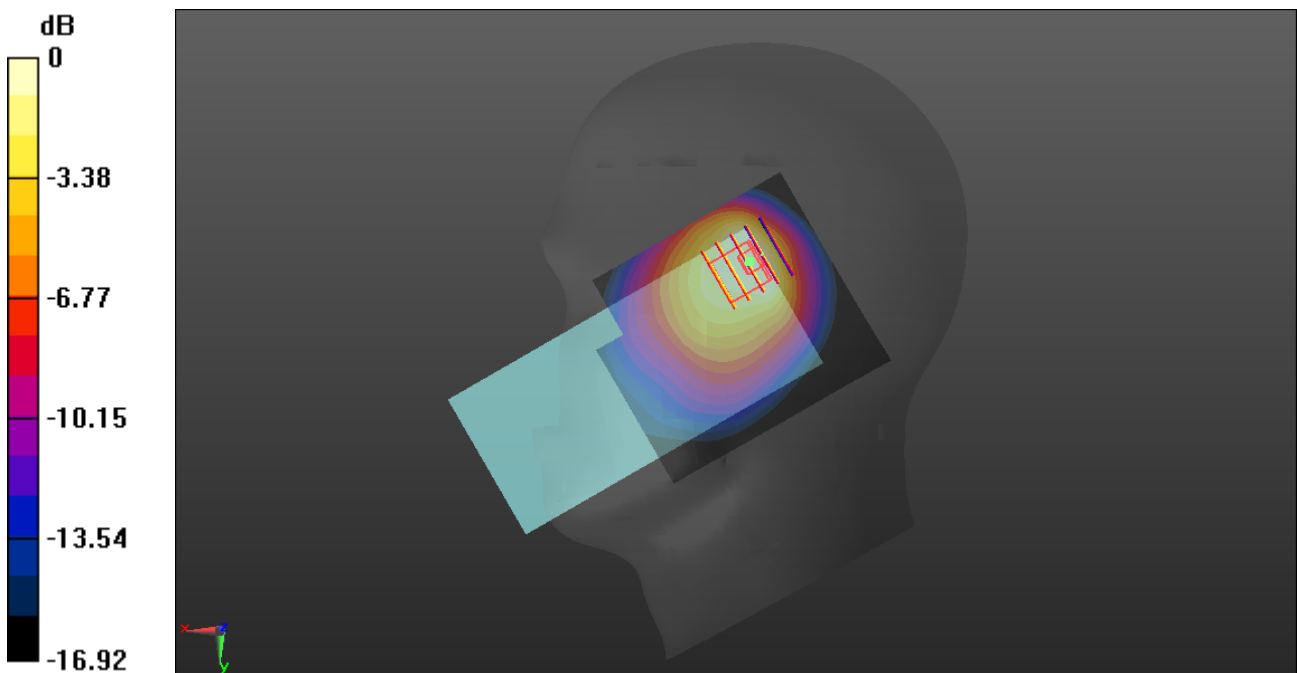
Ch4182/Zoom Scan (5x5x7)/Cube 0: Measurement grid: dx=8mm, dy=8mm, dz=5mm

Reference Value = 22.36 V/m; Power Drift = -0.07 dB

Peak SAR (extrapolated) = 1.67 W/kg

SAR(1 g) = 0.787 W/kg; SAR(10 g) = 0.513 W/kg

Maximum value of SAR (measured) = 1.04 W/kg



0 dB = 1.04 W/kg

LTE Band 2_20MHz_QPSK_1RB_0Offset_Right Cheek_Ch18900_Ant 2

Communication System: UID 0, LTE (0); Frequency: 1880 MHz; Duty Cycle: 1:1

Medium: HSL_1800 Medium parameters used: $f = 1880$ MHz; $\sigma = 1.321$ S/m; $\epsilon_r = 39.882$; $\rho = 1000$ kg/m³

Ambient Temperature : 23.2 °C; Liquid Temperature : 22.1 °C

DASY5 Configuration:

- Probe: EX3DV4 - SN7608; ConvF(8.11, 8.11, 8.11) @ 1880 MHz; Calibrated: 2023.3.15
- Sensor-Surface: 2mm (Mechanical Surface Detection)
- Electronics: DAE4 Sn480; Calibrated: 2022.6.22
- Phantom: SAM 2; Type: QD000P40CC; Serial: TP:1464
- Measurement SW: DASY52, Version 52.10 (4); SEMCAD X Version 14.6.14 (7501)

Ch18900/Area Scan (71x81x1): Interpolated grid: dx=1.500 mm, dy=1.500 mm

Maximum value of SAR (interpolated) = 0.690 W/kg

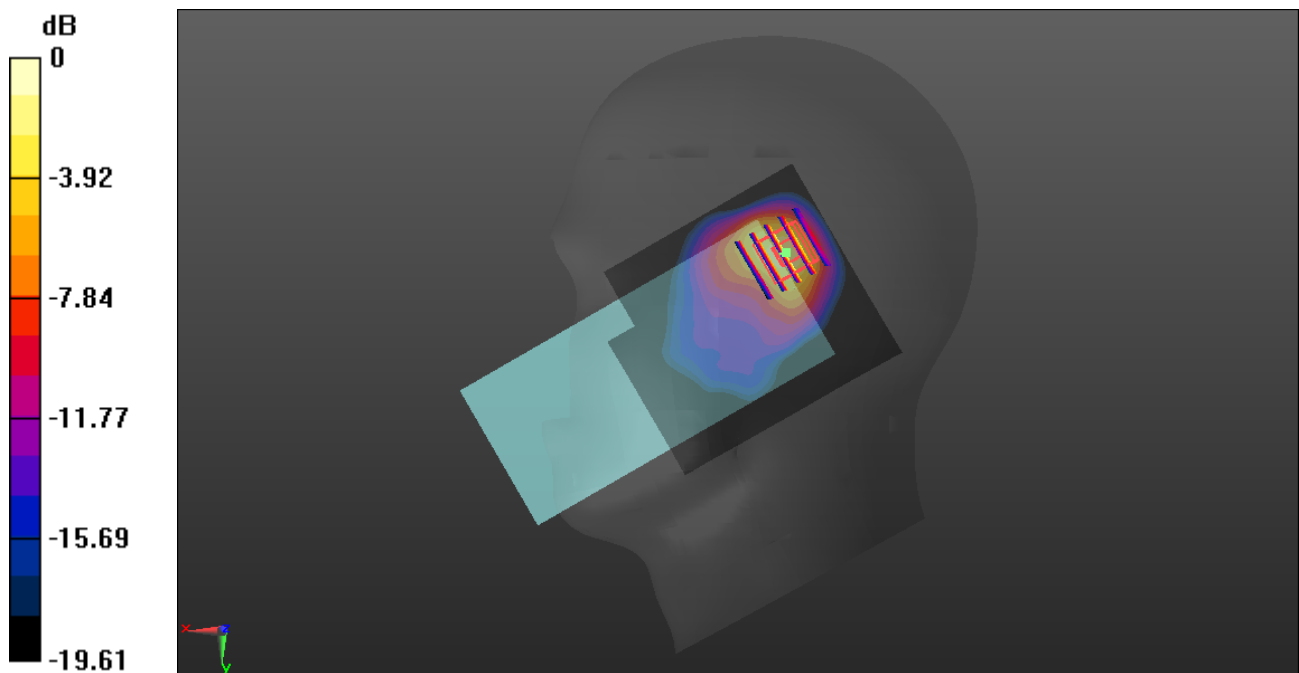
Ch18900/Zoom Scan (5x5x7)/Cube 0: Measurement grid: dx=8mm, dy=8mm, dz=5mm

Reference Value = 13.73 V/m; Power Drift = -0.09 dB

Peak SAR (extrapolated) = 1.16 W/kg

SAR(1 g) = 0.566 W/kg; SAR(10 g) = 0.256 W/kg

Maximum value of SAR (measured) = 0.931 W/kg



0 dB = 0.931 W/kg

LTE Band 5_10MHz_QPSK_1RB_0Offset_Right Cheek_Ch20525_Ant 2

Communication System: UID 0, LTE (0); Frequency: 836.5 MHz; Duty Cycle: 1:1

Medium: HSL_900 Medium parameters used: $f = 836.5$ MHz; $\sigma = 0.958$ S/m; $\epsilon_r = 40.846$; $\rho = 1000$ kg/m³

Ambient Temperature : 23.2 °C; Liquid Temperature : 22.1 °C

DASY5 Configuration:

- Probe: EX3DV4 - SN7608; ConvF(10.45, 10.45, 10.45) @ 836.5 MHz; Calibrated: 2023.3.15
- Sensor-Surface: 2mm (Mechanical Surface Detection)
- Electronics: DAE4 Sn480; Calibrated: 2022.6.22
- Phantom: SAM 2; Type: QD000P40CC; Serial: TP:1464
- Measurement SW: DASY52, Version 52.10 (4); SEMCAD X Version 14.6.14 (7501)

Ch20525/Area Scan (71x81x1): Interpolated grid: dx=1.500 mm, dy=1.500 mm

Maximum value of SAR (interpolated) = 1.45 W/kg

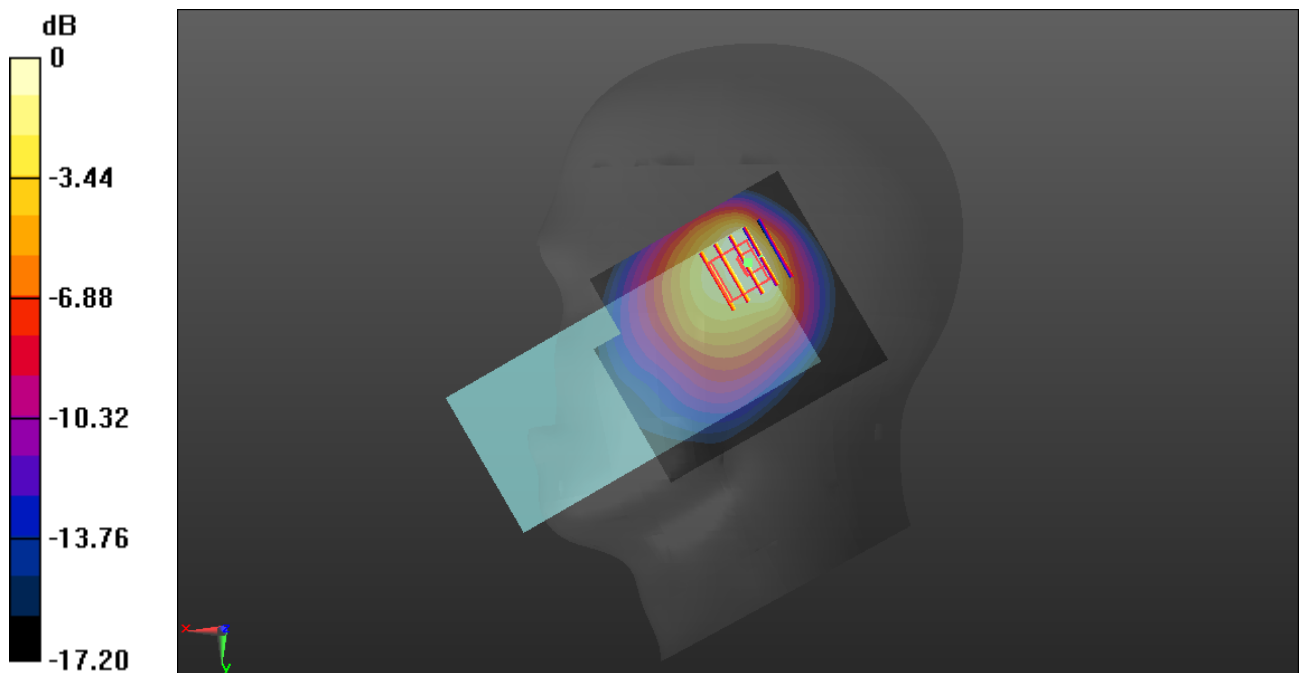
Ch20525/Zoom Scan (5x5x7)/Cube 0: Measurement grid: dx=8mm, dy=8mm, dz=5mm

Reference Value = 23.50 V/m; Power Drift = -0.04 dB

Peak SAR (extrapolated) = 1.79 W/kg

SAR(1 g) = 0.806 W/kg; SAR(10 g) = 0.509 W/kg

Maximum value of SAR (measured) = 1.07 W/kg



0 dB = 1.07 W/kg

LTE Band 7_20MHz_QPSK_1RB_0Offset_Right Cheek_Ch21100_Ant 2

Communication System: UID 0, LTE (0); Frequency: 2535 MHz; Duty Cycle: 1:1

Medium: HSL_2600 Medium parameters used: $f = 2535$ MHz; $\sigma = 1.911$ S/m; $\epsilon_r = 38.489$; $\rho = 1000$ kg/m³

Ambient Temperature : 23.2 °C; Liquid Temperature : 22.3 °C

DASY5 Configuration:

- Probe: EX3DV4 - SN7608; ConvF(7.34, 7.34, 7.34) @ 2535 MHz; Calibrated: 2023.3.15
- Sensor-Surface: 2mm (Mechanical Surface Detection)
- Electronics: DAE4 Sn480; Calibrated: 2022.6.22
- Phantom: SAM 2; Type: QD000P40CC; Serial: TP:1464
- Measurement SW: DASY52, Version 52.10 (4); SEMCAD X Version 14.6.14 (7501)

Ch21100/Area Scan (81x91x1): Interpolated grid: dx=1.200 mm, dy=1.200 mm

Maximum value of SAR (interpolated) = 0.763 W/kg

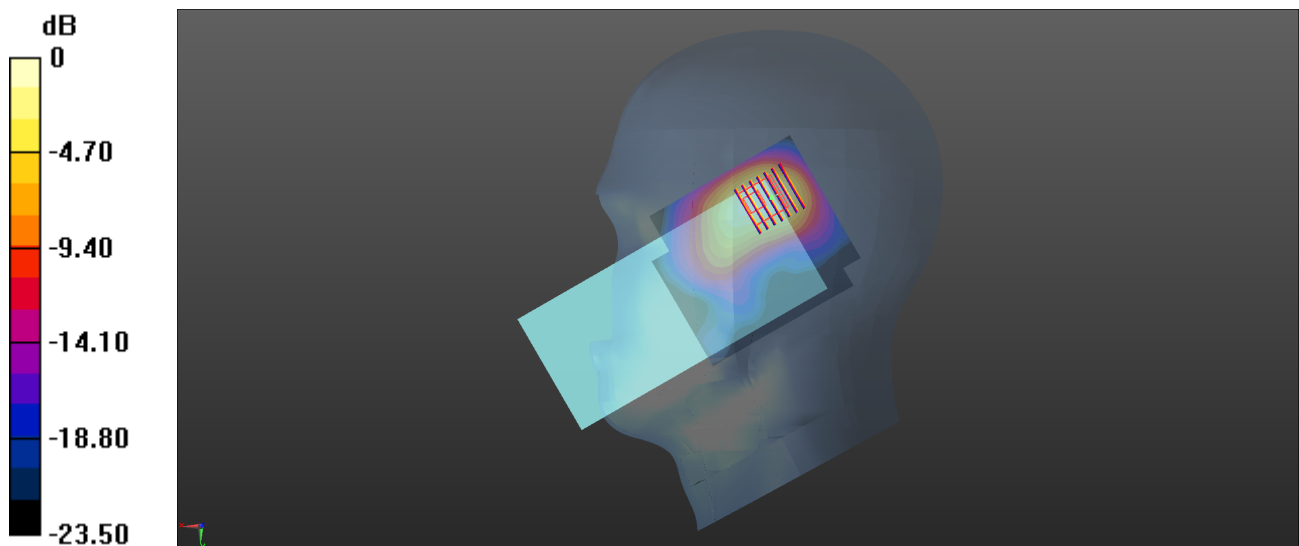
Ch21100/Zoom Scan (7x7x7)/Cube 0: Measurement grid: dx=5mm, dy=5mm, dz=5mm

Reference Value = 4.872 V/m; Power Drift = -0.05 dB

Peak SAR (extrapolated) = 1.02 W/kg

SAR(1 g) = 0.514 W/kg; SAR(10 g) = 0.223 W/kg

Maximum value of SAR (measured) = 0.752 W/kg



0 dB = 0.752 W/kg

LTE Band 13_10MHz_QPSK_1RB_0Offset_Right Cheek_Ch23230_Ant 2

Communication System: UID 0, LTE (0); Frequency: 782 MHz; Duty Cycle: 1:1

Medium: HSL_750 Medium parameters used: $f = 782$ MHz; $\sigma = 0.932$ S/m; $\epsilon_r = 40.959$; $\rho = 1000$ kg/m³

Ambient Temperature : 23.2 °C; Liquid Temperature : 22.1 °C

DASY5 Configuration:

- Probe: EX3DV4 - SN7608; ConvF(10.45, 10.45, 10.45) @ 782 MHz; Calibrated: 2023.3.15
- Sensor-Surface: 2mm (Mechanical Surface Detection)
- Electronics: DAE4 Sn480; Calibrated: 2022.6.22
- Phantom: SAM 2; Type: QD000P40CC; Serial: TP:1464
- Measurement SW: DASY52, Version 52.10 (4); SEMCAD X Version 14.6.14 (7501)

Ch23230/Area Scan (71x81x1): Interpolated grid: dx=1.500 mm, dy=1.500 mm

Maximum value of SAR (interpolated) = 1.37 W/kg

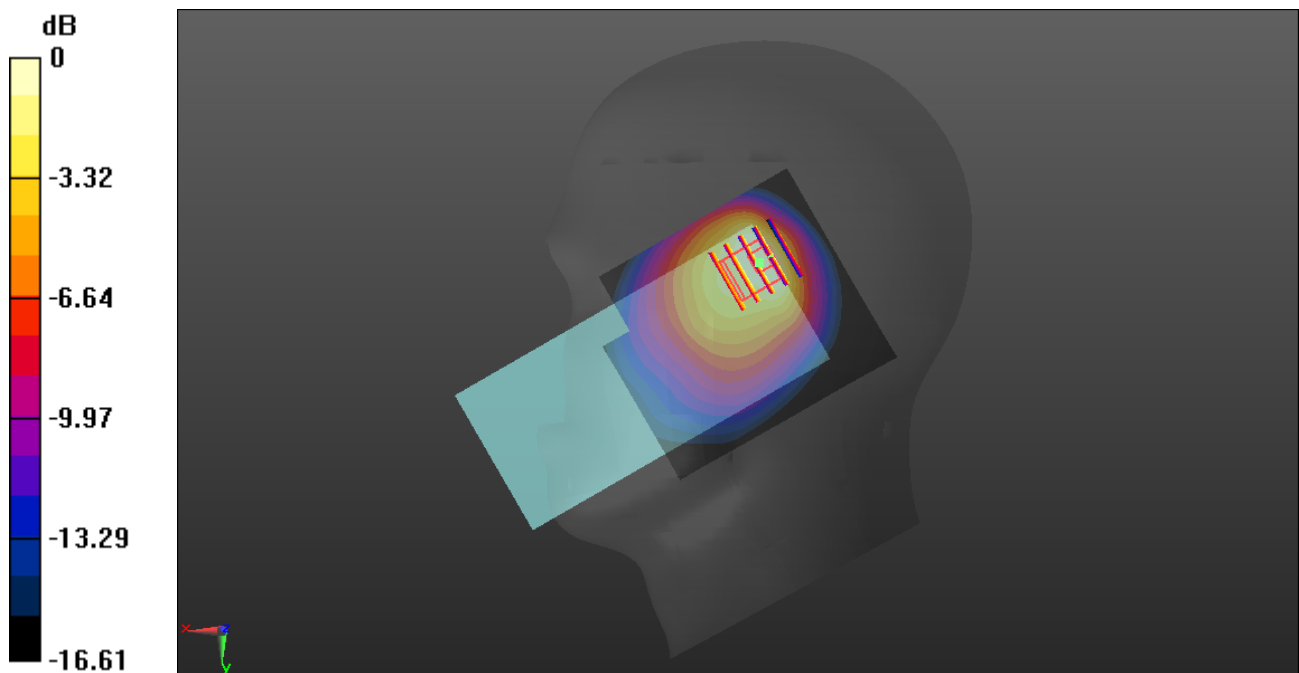
Ch23230/Zoom Scan (5x5x7)/Cube 0: Measurement grid: dx=8mm, dy=8mm, dz=5mm

Reference Value = 23.79 V/m; Power Drift = -0.07 dB

Peak SAR (extrapolated) = 1.70 W/kg

SAR(1 g) = 0.767 W/kg; SAR(10 g) = 0.480 W/kg

Maximum value of SAR (measured) = 1.06 W/kg



0 dB = 1.06 W/kg

LTE Band 38_20MHz_QPSK_1RB_0Offset_Right Cheek_Ch38000_Ant 2

Communication System: UID 0, LTE (0); Frequency: 2595 MHz; Duty Cycle: 1:1.59

Medium: HSL_2600 Medium parameters used: $f = 2595$ MHz; $\sigma = 1.98$ S/m; $\epsilon_r = 38.287$; $\rho = 1000$ kg/m³

Ambient Temperature : 23.2 °C; Liquid Temperature : 22.3 °C

DASY5 Configuration:

- Probe: EX3DV4 - SN7608; ConvF(7.34, 7.34, 7.34) @ 2595 MHz; Calibrated: 2023.3.15
- Sensor-Surface: 2mm (Mechanical Surface Detection)
- Electronics: DAE4 Sn480; Calibrated: 2022.6.22
- Phantom: SAM 2; Type: QD000P40CC; Serial: TP:1464
- Measurement SW: DASY52, Version 52.10 (4); SEMCAD X Version 14.6.14 (7501)

Ch38000/Area Scan (81x91x1): Interpolated grid: dx=1.200 mm, dy=1.200 mm

Maximum value of SAR (interpolated) = 0.803 W/kg

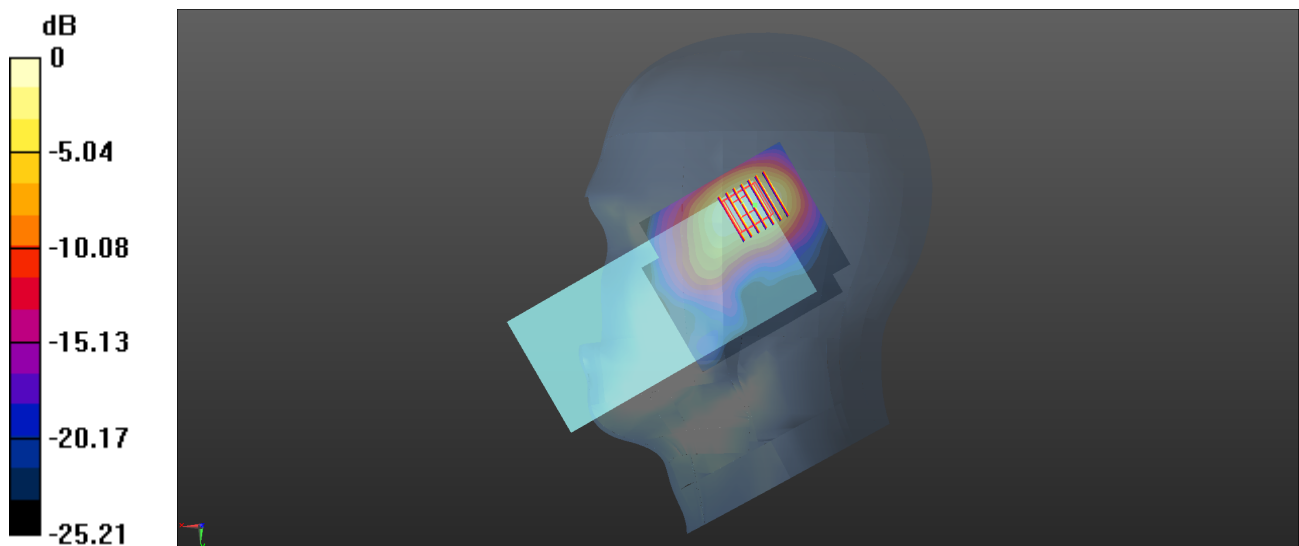
Ch38000/Zoom Scan (7x7x7)/Cube 0: Measurement grid: dx=5mm, dy=5mm, dz=5mm

Reference Value = 4.978 V/m; Power Drift = 0.08 dB

Peak SAR (extrapolated) = 1.07 W/kg

SAR(1 g) = 0.570 W/kg; SAR(10 g) = 0.281 W/kg

Maximum value of SAR (measured) = 0.799 W/kg



0 dB = 0.799 W/kg

LTE Band 40_10MHz_QPSK_1RB_0Offset_Right Tilt_Ch38750_Ant 2

Communication System: UID 0, LTE (0); Frequency: 2310 MHz; Duty Cycle: 1:1.59

Medium: HSL_2300 Medium parameters used: $f = 2310$ MHz; $\sigma = 1.66$ S/m; $\epsilon_r = 39.354$; $\rho = 1000$ kg/m³

Ambient Temperature : 23.2 °C; Liquid Temperature : 22.2 °C

DASY5 Configuration:

- Probe: EX3DV4 - SN7608; ConvF(7.85, 7.85, 7.85) @ 2310 MHz; Calibrated: 2023.3.15
- Sensor-Surface: 2mm (Mechanical Surface Detection)
- Electronics: DAE4 Sn480; Calibrated: 2022.6.22
- Phantom: SAM 2; Type: QD000P40CC; Serial: TP:1464
- Measurement SW: DASY52, Version 52.10 (4); SEMCAD X Version 14.6.14 (7501)

Ch38750/Area Scan (81x91x1): Interpolated grid: dx=1.200 mm, dy=1.200 mm

Maximum value of SAR (interpolated) = 0.503 W/kg

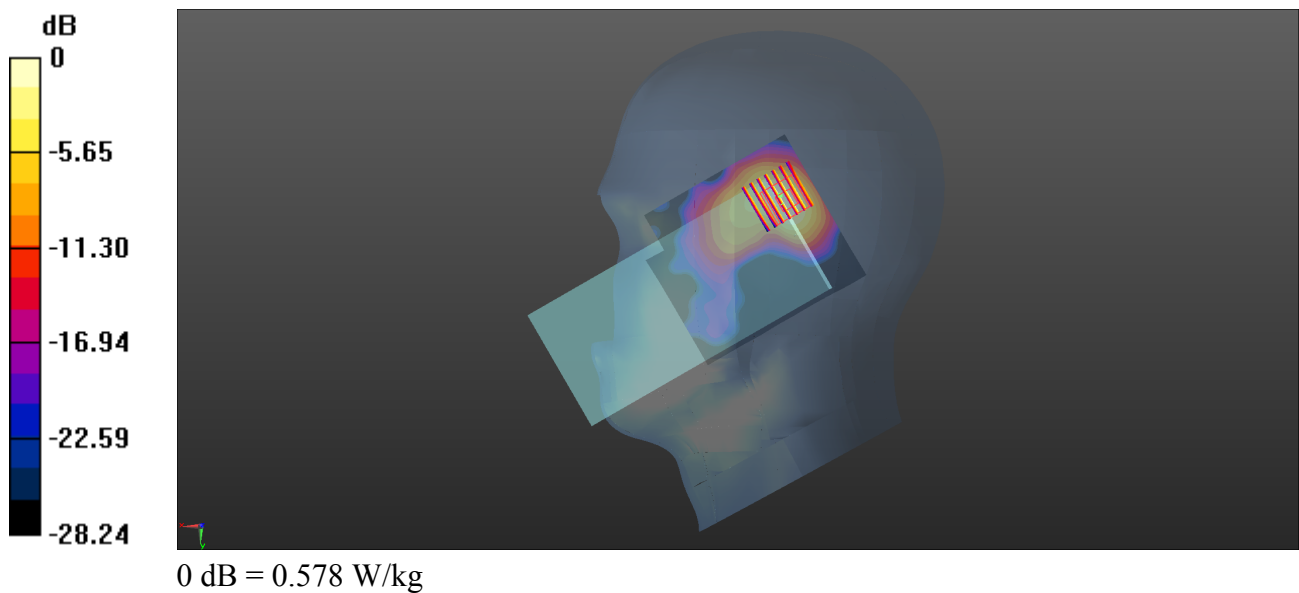
Ch38750/Zoom Scan (7x7x7)/Cube 0: Measurement grid: dx=5mm, dy=5mm, dz=5mm

Reference Value = 5.858 V/m; Power Drift = -0.15 dB

Peak SAR (extrapolated) = 0.864 W/kg

SAR(1 g) = 0.366 W/kg; SAR(10 g) = 0.155 W/kg

Maximum value of SAR (measured) = 0.578 W/kg



LTE Band 41_20MHz_QPSK_1RB_0Offset_Right Cheek_Ch40620_Ant 2

Communication System: UID 0, LTE (0); Frequency: 2593 MHz; Duty Cycle: 1:1.59

Medium: HSL_2600 Medium parameters used: $f = 2593$ MHz; $\sigma = 1.973$ S/m; $\epsilon_r = 38.214$; $\rho = 1000$ kg/m³

Ambient Temperature : 23.2 °C; Liquid Temperature : 22.3 °C

DASY5 Configuration:

- Probe: EX3DV4 - SN7608; ConvF(7.34, 7.34, 7.34) @ 2593 MHz; Calibrated: 2023.3.15
- Sensor-Surface: 2mm (Mechanical Surface Detection)
- Electronics: DAE4 Sn480; Calibrated: 2022.6.22
- Phantom: SAM 2; Type: QD000P40CC; Serial: TP:1464
- Measurement SW: DASY52, Version 52.10 (4); SEMCAD X Version 14.6.14 (7501)

Ch40620/Area Scan (81x91x1): Interpolated grid: dx=1.200 mm, dy=1.200 mm

Maximum value of SAR (interpolated) = 0.852 W/kg

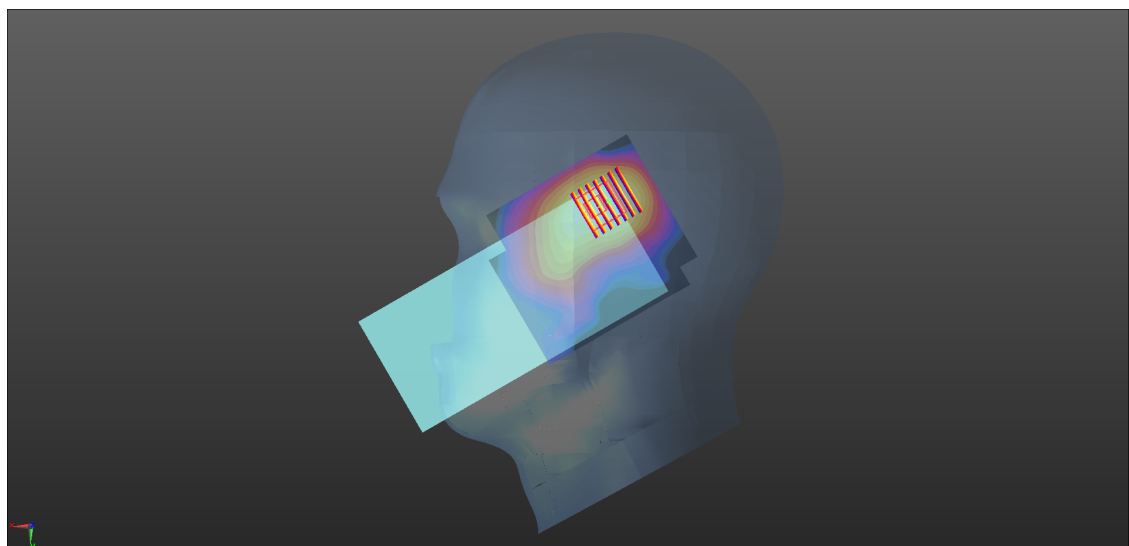
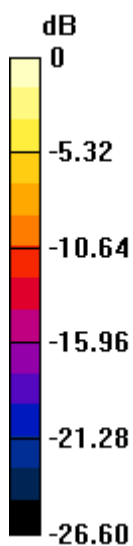
Ch40620/Zoom Scan (7x7x7)/Cube 0: Measurement grid: dx=5mm, dy=5mm, dz=5mm

Reference Value = 4.963 V/m; Power Drift = 0.02 dB

Peak SAR (extrapolated) = 0.991 W/kg

SAR(1 g) = 0.533 W/kg; SAR(10 g) = 0.261 W/kg

Maximum value of SAR (measured) = 0.763 W/kg



0 dB = 0.763 W/kg

LTE Band 66_20MHz_QPSK_1RB_0Offset_Right Cheek_Ch132322_Ant 2

Communication System: UID 0, LTE (0); Frequency: 1745 MHz; Duty Cycle: 1:1

Medium: HSL_1800 Medium parameters used: $f = 1745$ MHz; $\sigma = 1.382$ S/m; $\epsilon_r = 41.164$; $\rho = 1000$ kg/m³

Ambient Temperature : 23.2 °C; Liquid Temperature : 22.1 °C

DASY5 Configuration:

- Probe: EX3DV4 - SN7608; ConvF(8.4, 8.4, 8.4) @ 1745 MHz; Calibrated: 2023.3.15
- Sensor-Surface: 2mm (Mechanical Surface Detection)
- Electronics: DAE4 Sn480; Calibrated: 2022.6.22
- Phantom: SAM 2; Type: QD000P40CC; Serial: TP:1464
- Measurement SW: DASY52, Version 52.10 (4); SEMCAD X Version 14.6.14 (7501)

Ch132322/Area Scan (71x81x1): Interpolated grid: dx=1.500 mm, dy=1.500 mm

Maximum value of SAR (interpolated) = 0.286 W/kg

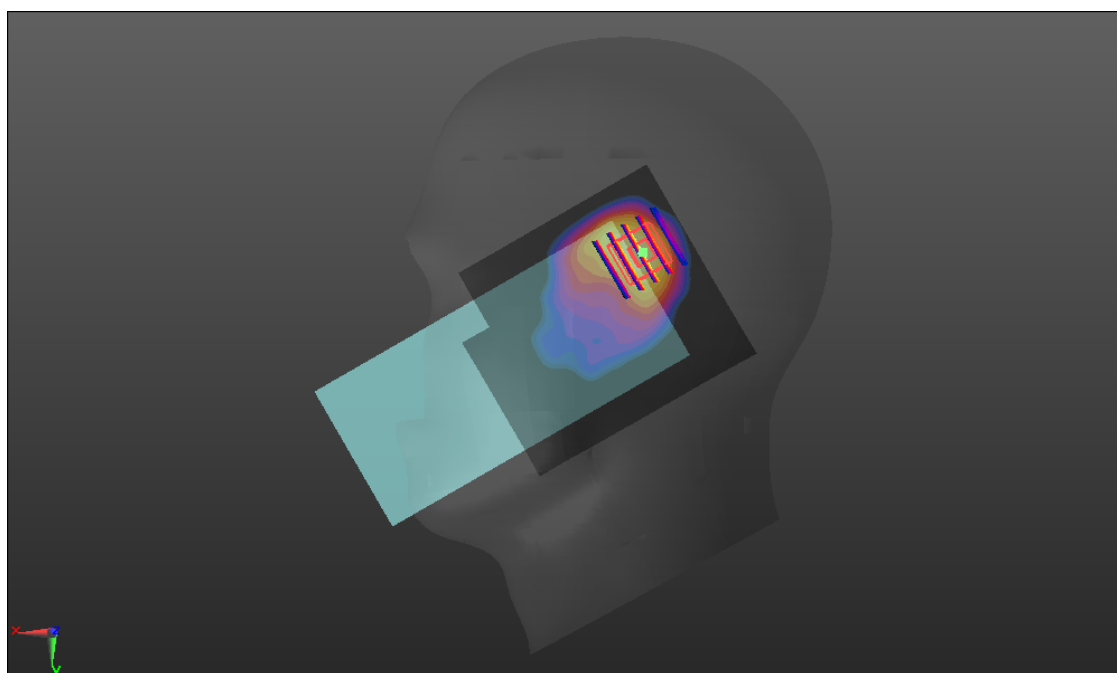
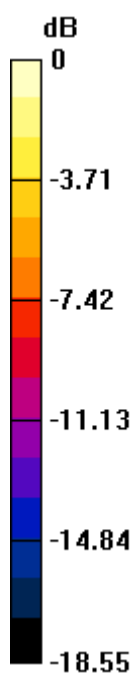
Ch132322/Zoom Scan (5x5x7)/Cube 0: Measurement grid: dx=8mm, dy=8mm, dz=5mm

Reference Value = 8.144 V/m; Power Drift = 0.01 dB

Peak SAR (extrapolated) = 0.445 W/kg

SAR(1 g) = 0.221 W/kg; SAR(10 g) = 0.103 W/kg

Maximum value of SAR (measured) = 0.354 W/kg



0 dB = 0.354 W/kg

WLAN 2.4GHz_802.11b 1Mbps_Left Cheek_Ch6

Communication System: UID 0, WLAN 2.4GHz 802.11b (0); Frequency: 2437 MHz; Duty Cycle: 1:1.005
Medium: HSL_2450 Medium parameters used: $f = 2437$ MHz; $\sigma = 1.802$ S/m; $\epsilon_r = 38.902$; $\rho = 1000$ kg/m³
Ambient Temperature : 23.2 °C; Liquid Temperature : 22.2 °C

DASY5 Configuration:

- Probe: EX3DV4 - SN7608; ConvF(7.6, 7.6, 7.6) @ 2437 MHz; Calibrated: 2023.3.15
- Sensor-Surface: 2mm (Mechanical Surface Detection)
- Electronics: DAE4 Sn480; Calibrated: 2022.6.22
- Phantom: SAM 2; Type: QD000P40CC; Serial: TP:1464
- Measurement SW: DASY52, Version 52.10 (4); SEMCAD X Version 14.6.14 (7501)

Ch6/Area Scan (81x91x1): Interpolated grid: dx=1.200 mm, dy=1.200 mm

Maximum value of SAR (interpolated) = 1.39 W/kg

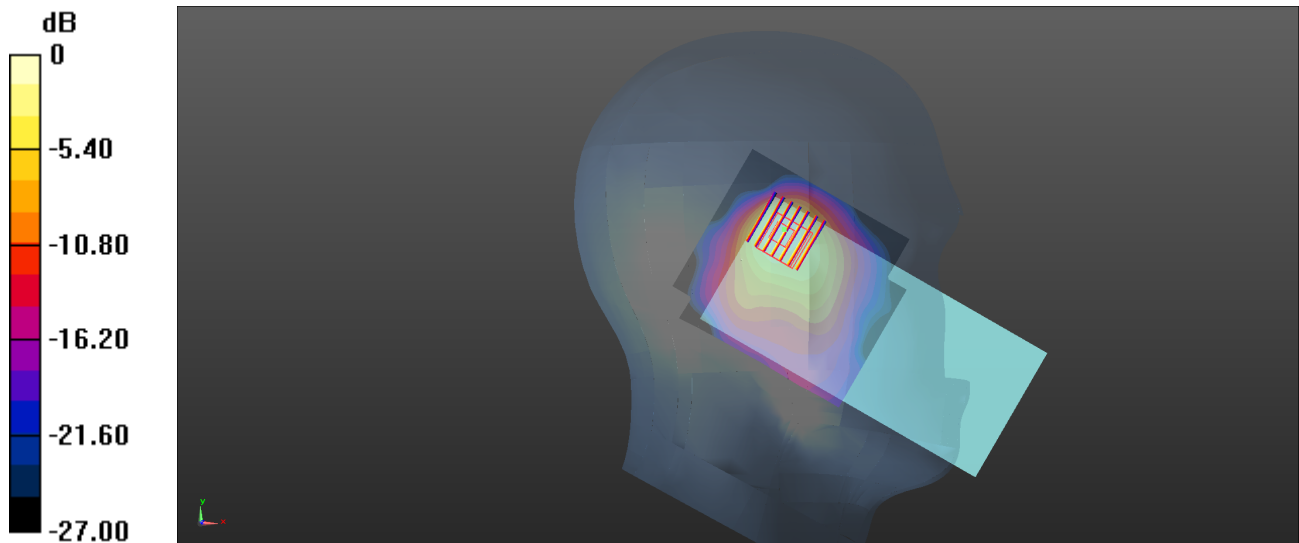
Ch6/Zoom Scan (7x7x7)/Cube 0: Measurement grid: dx=5mm, dy=5mm, dz=5mm

Reference Value = 9.085 V/m; Power Drift = 0.07 dB

Peak SAR (extrapolated) = 1.92 W/kg

SAR(1 g) = 0.879 W/kg; SAR(10 g) = 0.382 W/kg

Maximum value of SAR (measured) = 1.29 W/kg



0 dB = 1.29 W/kg

WLAN 5.2GHz_802.11ac-VHT20 MCS0_Left Tilt_Ch48

Communication System: UID 0, WLAN 5GHz (0); Frequency: 5240 MHz; Duty Cycle: 1:1.05

Medium: HSL_5250 Medium parameters used: $f = 5240$ MHz; $\sigma = 4.685$ S/m; $\epsilon_r = 36.07$; $\rho = 1000$ kg/m³

Ambient Temperature : 23.2 °C; Liquid Temperature : 22.3 °C

DASY5 Configuration:

- Probe: EX3DV4 - SN7608; ConvF(5.35, 5.35, 5.35) @ 5240 MHz; Calibrated: 2023.3.15
- Sensor-Surface: 2mm (Mechanical Surface Detection)
- Electronics: DAE4 Sn480; Calibrated: 2022.6.22
- Phantom: SAM 2; Type: QD000P40CC; Serial: TP:1464
- Measurement SW: DASY52, Version 52.10 (4); SEMCAD X Version 14.6.14 (7501)

Ch48/Area Scan (111x121x1): Interpolated grid: dx=1.000 mm, dy=1.000 mm

Maximum value of SAR (interpolated) = 1.56 W/kg

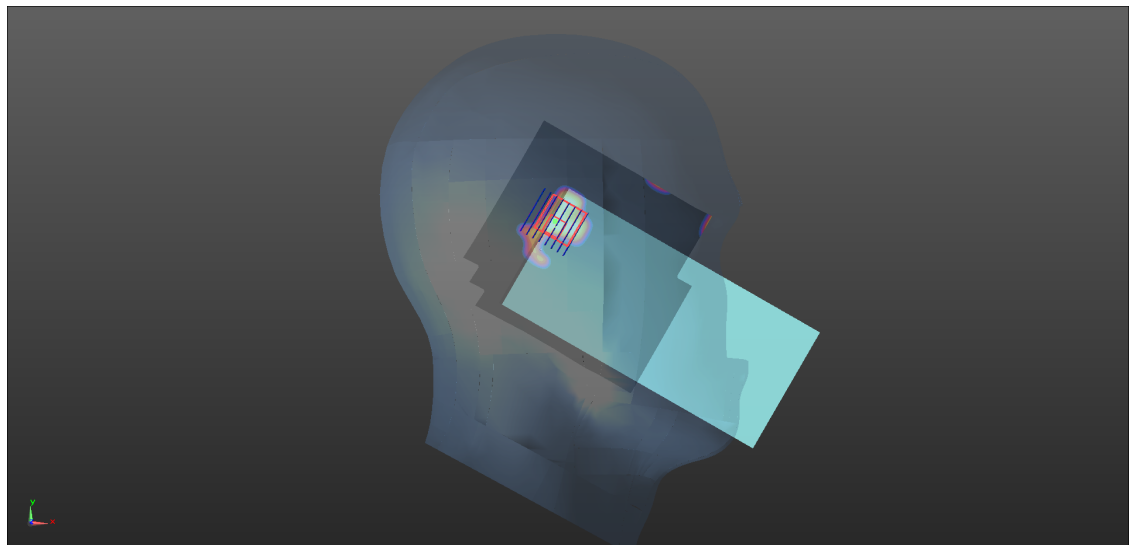
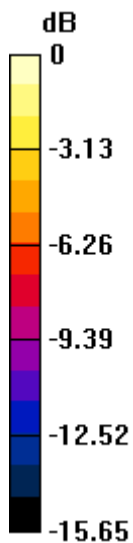
Ch48/Zoom Scan (8x8x15)/Cube 0: Measurement grid: dx=4mm, dy=4mm, dz=2mm

Reference Value = 4.505 V/m; Power Drift = 0.07 dB

Peak SAR (extrapolated) = 2.48 W/kg

SAR(1 g) = 0.540 W/kg; SAR(10 g) = 0.197 W/kg

Maximum value of SAR (measured) = 1.14 W/kg



0 dB = 1.14 W/kg

WLAN 5.3GHz_802.11ac-VHT20 MCS0_Left Tilt_Ch52

Communication System: UID 0, WLAN 5GHz (0); Frequency: 5260 MHz; Duty Cycle: 1:1.05

Medium: HSL_5250 Medium parameters used: $f = 5260$ MHz; $\sigma = 4.714$ S/m; $\epsilon_r = 36.032$; $\rho = 1000$ kg/m³

Ambient Temperature : 23.2 °C; Liquid Temperature : 22.3 °C

DASY5 Configuration:

- Probe: EX3DV4 - SN7608; ConvF(5.35, 5.35, 5.35) @ 5260 MHz; Calibrated: 2023.3.15
- Sensor-Surface: 2mm (Mechanical Surface Detection)
- Electronics: DAE4 Sn480; Calibrated: 2022.6.22
- Phantom: SAM 2; Type: QD000P40CC; Serial: TP:1464
- Measurement SW: DASY52, Version 52.10 (4); SEMCAD X Version 14.6.14 (7501)

Ch52/Area Scan (111x121x1): Interpolated grid: dx=1.000 mm, dy=1.000 mm

Maximum value of SAR (interpolated) = 1.31 W/kg

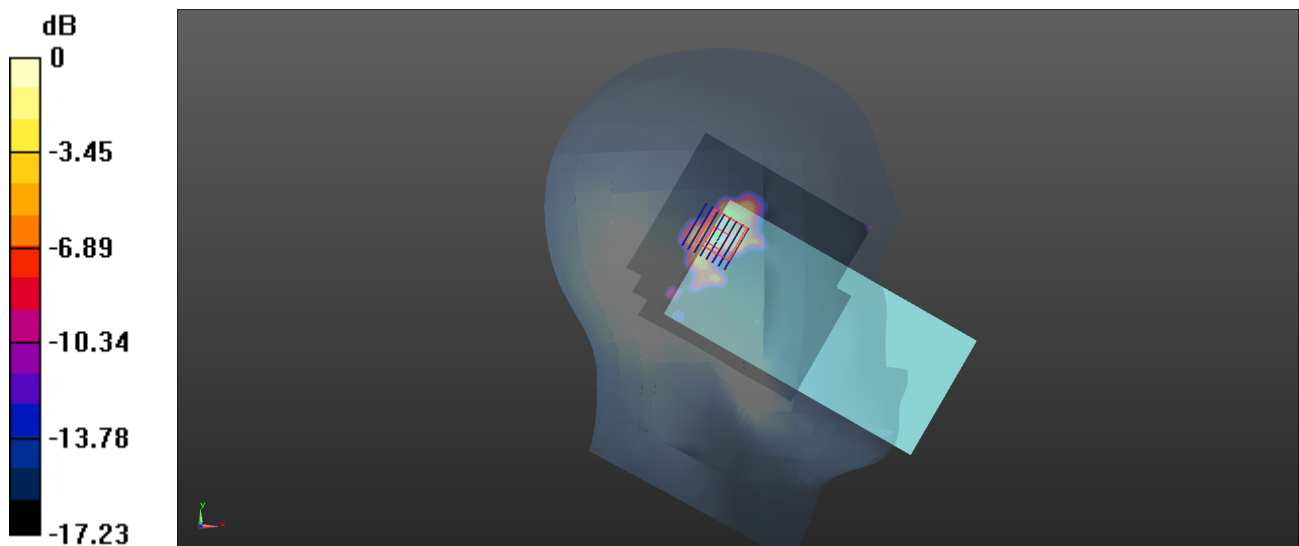
Ch52/Zoom Scan (8x8x15)/Cube 0: Measurement grid: dx=4mm, dy=4mm, dz=2mm

Reference Value = 5.186 V/m; Power Drift = -0.05 dB

Peak SAR (extrapolated) = 2.80 W/kg

SAR(1 g) = 0.653 W/kg; SAR(10 g) = 0.231 W/kg

Maximum value of SAR (measured) = 1.34 W/kg



0 dB = 1.34 W/kg

WLAN 5.5GHz_802.11n-HT20 MCS0_Left Tilt_Ch140

Communication System: UID 0, WLAN 5GHz (0); Frequency: 5700 MHz; Duty Cycle: 1:1.051

Medium: HSL_5600 Medium parameters used: $f = 5700$ MHz; $\sigma = 5.24$ S/m; $\epsilon_r = 35.248$; $\rho = 1000$ kg/m³

Ambient Temperature : 23.2 °C; Liquid Temperature : 22.3 °C

DASY5 Configuration:

- Probe: EX3DV4 - SN7608; ConvF(4.8, 4.8, 4.8) @ 5700 MHz; Calibrated: 2023.3.15
- Sensor-Surface: 2mm (Mechanical Surface Detection)
- Electronics: DAE4 Sn480; Calibrated: 2022.6.22
- Phantom: SAM 2; Type: QD000P40CC; Serial: TP:1464
- Measurement SW: DASY52, Version 52.10 (4); SEMCAD X Version 14.6.14 (7501)

Ch140/Area Scan (101x101x1): Interpolated grid: dx=1.000 mm, dy=1.000 mm

Maximum value of SAR (interpolated) = 2.04 W/kg

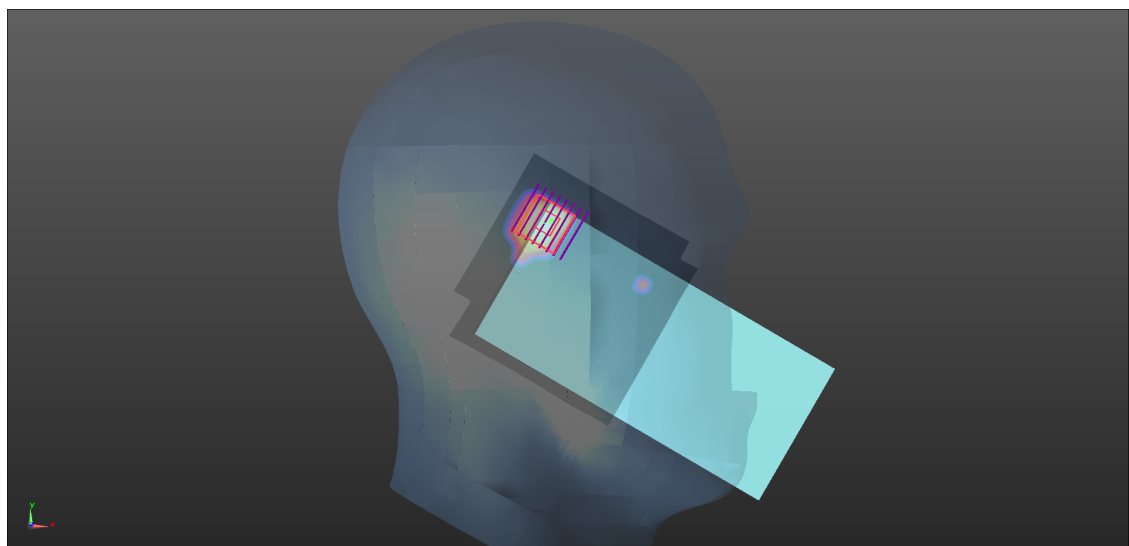
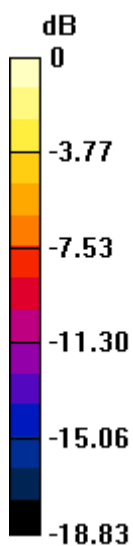
Ch140/Zoom Scan (8x8x15)/Cube 0: Measurement grid: dx=4mm, dy=4mm, dz=2mm

Reference Value = 4.039 V/m; Power Drift = 0.09 dB

Peak SAR (extrapolated) = 3.75 W/kg

SAR(1 g) = 0.692 W/kg; SAR(10 g) = 0.233 W/kg

Maximum value of SAR (measured) = 1.47 W/kg



0 dB = 1.47 W/kg

WLAN 5.8GHz_802.11ac-VHT20 MCS0_Left Tilt_Ch157

Communication System: UID 0, WLAN 5GHz (0); Frequency: 5785 MHz; Duty Cycle: 1:1.05

Medium: HSL_5750 Medium parameters used: $f = 5785$ MHz; $\sigma = 5.333$ S/m; $\epsilon_r = 35.097$; $\rho = 1000$ kg/m³

Ambient Temperature : 23.2 °C; Liquid Temperature : 22.3 °C

DASY5 Configuration:

- Probe: EX3DV4 - SN7608; ConvF(4.87, 4.87, 4.87) @ 5785 MHz; Calibrated: 2023.3.15
- Sensor-Surface: 2mm (Mechanical Surface Detection)
- Electronics: DAE4 Sn480; Calibrated: 2022.6.22
- Phantom: SAM 2; Type: QD000P40CC; Serial: TP:1464
- Measurement SW: DASY52, Version 52.10 (4); SEMCAD X Version 14.6.14 (7501)

Ch157/Area Scan (101x101x1): Interpolated grid: dx=1.000 mm, dy=1.000 mm

Maximum value of SAR (interpolated) = 1.46 W/kg

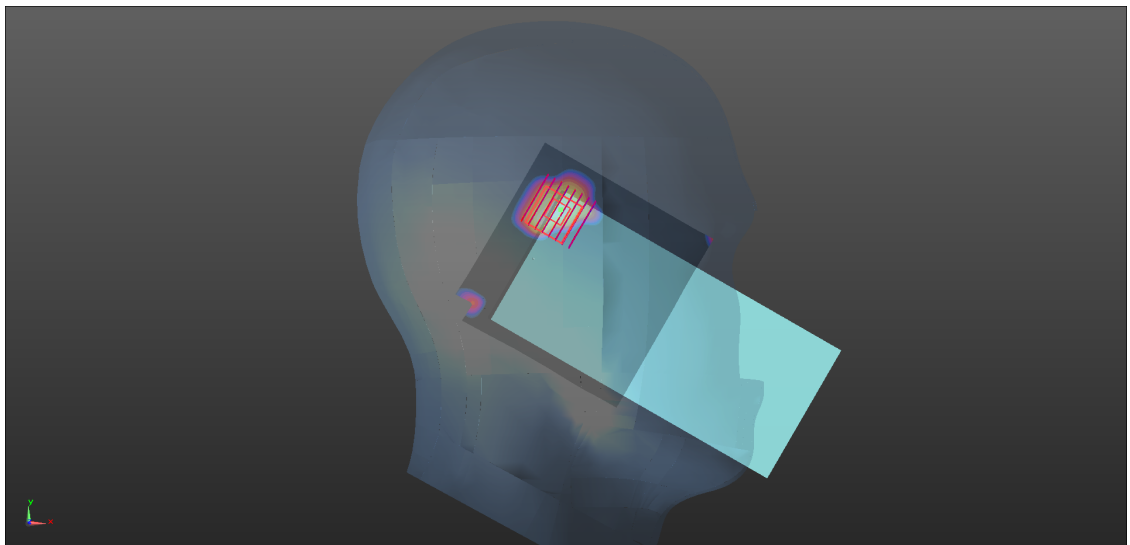
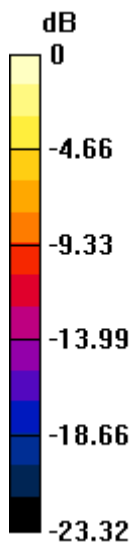
Ch157/Zoom Scan (8x8x15)/Cube 0: Measurement grid: dx=4mm, dy=4mm, dz=2mm

Reference Value = 3.897 V/m; Power Drift = 0.08 dB

Peak SAR (extrapolated) = 3.78 W/kg

SAR(1 g) = 0.706 W/kg; SAR(10 g) = 0.228 W/kg

Maximum value of SAR (measured) = 1.47 W/kg



0 dB = 1.47 W/kg

Bluetooth_DH5_Left Cheek_Ch0

Communication System: UID 0, Bluetooth (0); Frequency: 2402 MHz; Duty Cycle: 1:1.073

Medium: HSL_2450 Medium parameters used: $f = 2402$ MHz; $\sigma = 1.749$ S/m; $\epsilon_r = 38.922$; $\rho = 1000$ kg/m³

Ambient Temperature : 23.2 °C; Liquid Temperature : 22.2 °C

DASY5 Configuration:

- Probe: EX3DV4 - SN7608; ConvF(7.6, 7.6, 7.6) @ 2437 MHz; Calibrated: 2023.3.15
- Sensor-Surface: 2mm (Mechanical Surface Detection)
- Electronics: DAE4 Sn480; Calibrated: 2022.6.22
- Phantom: SAM 2; Type: QD000P40CC; Serial: TP:1464
- Measurement SW: DASY52, Version 52.10 (4); SEMCAD X Version 14.6.14 (7501)

Ch0/Area Scan (81x91x1): Interpolated grid: dx=1.200 mm, dy=1.200 mm

Maximum value of SAR (interpolated) = 0.194 W/kg

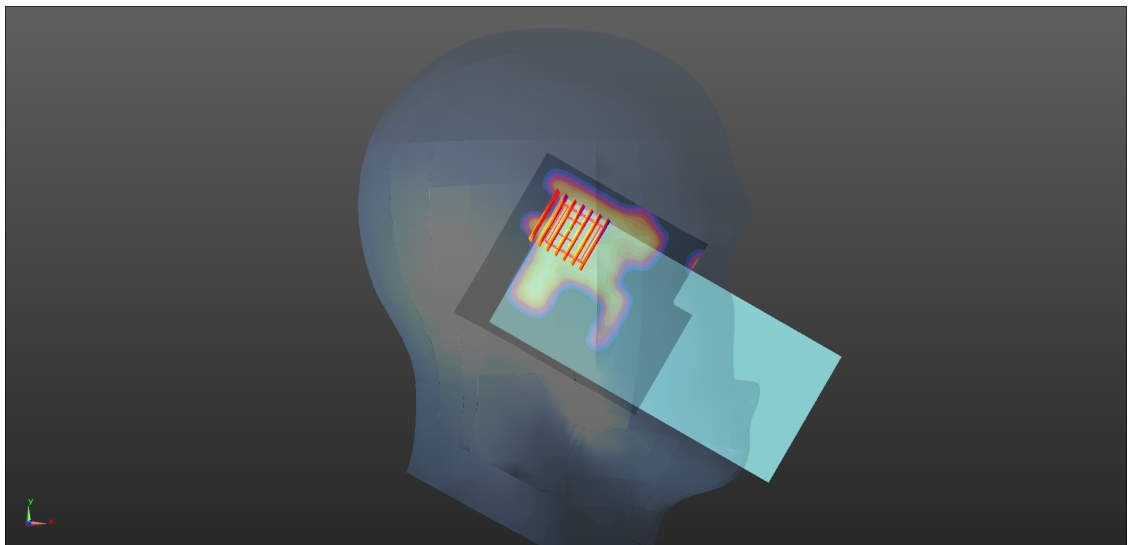
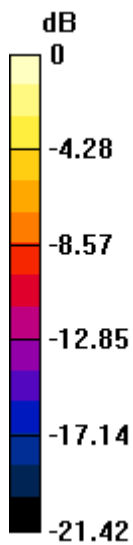
Ch0/Zoom Scan (7x7x7)/Cube 0: Measurement grid: dx=5mm, dy=5mm, dz=5mm

Reference Value = 4.235 V/m; Power Drift = 0.04 dB

Peak SAR (extrapolated) = 0.452 W/kg

SAR(1 g) = 0.115 W/kg; SAR(10 g) = 0.053 W/kg

Maximum value of SAR (measured) = 0.162 W/kg



0 dB = 0.162 W/kg

GSM850_GPRS(2 TX slots)_Back Side_10mm_Ch189_Ant 3

Communication System: UID 0, GSM850(class 10) (0); Frequency: 836.4 MHz; Duty Cycle: 1:4.15

Medium: HSL_900 Medium parameters used: $f = 836.4$ MHz; $\sigma = 0.958$ S/m; $\epsilon_r = 40.843$; $\rho = 1000$ kg/m³

Ambient Temperature : 23.2 °C; Liquid Temperature : 22.1 °C

DASY5 Configuration:

- Probe: EX3DV4 - SN7608; ConvF(10.45, 10.45, 10.45) @ 836.4 MHz; Calibrated: 2023.3.15
- Sensor-Surface: 2mm (Mechanical Surface Detection)
- Electronics: DAE4 Sn480; Calibrated: 2022.6.22
- Phantom: SAM 2; Type: QD000P40CC; Serial: TP:1464
- Measurement SW: DASY52, Version 52.10 (4); SEMCAD X Version 14.6.14 (7501)

Ch189/Area Scan (71x71x1): Interpolated grid: dx=1.500 mm, dy=1.500 mm

Maximum value of SAR (interpolated) = 0.396 W/kg

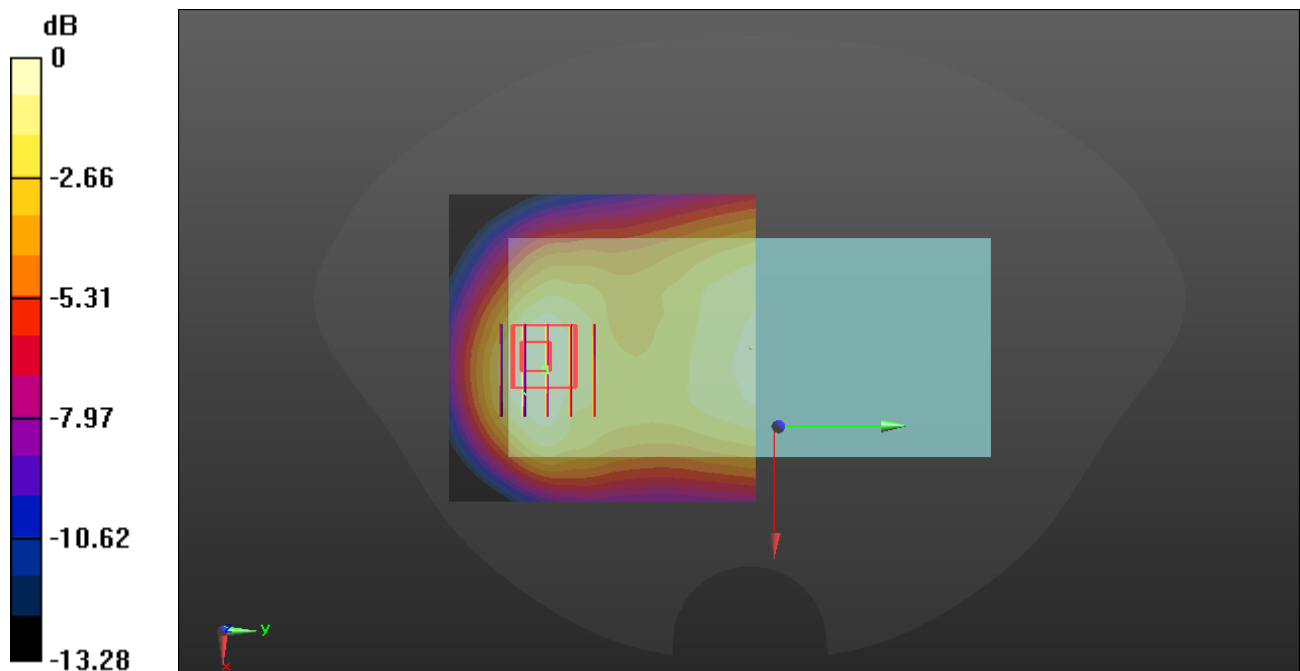
Ch189/Zoom Scan (5x5x7)/Cube 0: Measurement grid: dx=8mm, dy=8mm, dz=5mm

Reference Value = 17.83 V/m; Power Drift = -0.06 dB

Peak SAR (extrapolated) = 0.480 W/kg

SAR(1 g) = 0.286 W/kg; SAR(10 g) = 0.179 W/kg

Maximum value of SAR (measured) = 0.375 W/kg



0 dB = 0.375 W/kg

GSM1900_GPRS(3 TX slots)_Back Side_10mm_Ch661_Ant 3

Communication System: UID 0, PCS1900(class 11) (0); Frequency: 1880 MHz; Duty Cycle: 1:2.77

Medium: HSL_1800 Medium parameters used: $f = 1880$ MHz; $\sigma = 1.366$ S/m; $\epsilon_r = 40.167$; $\rho = 1000$ kg/m³

Ambient Temperature : 23.2 °C; Liquid Temperature : 22.1 °C

DASY5 Configuration:

- Probe: EX3DV4 - SN7608; ConvF(8.11, 8.11, 8.11) @ 1880 MHz; Calibrated: 2023.3.15
- Sensor-Surface: 2mm (Mechanical Surface Detection)
- Electronics: DAE4 Sn480; Calibrated: 2022.6.22
- Phantom: SAM 2; Type: QD000P40CC; Serial: TP:1464
- Measurement SW: DASY52, Version 52.10 (4); SEMCAD X Version 14.6.14 (7501)

Ch661/Area Scan (71x81x1): Interpolated grid: dx=1.500 mm, dy=1.500 mm

Maximum value of SAR (interpolated) = 0.784 W/kg

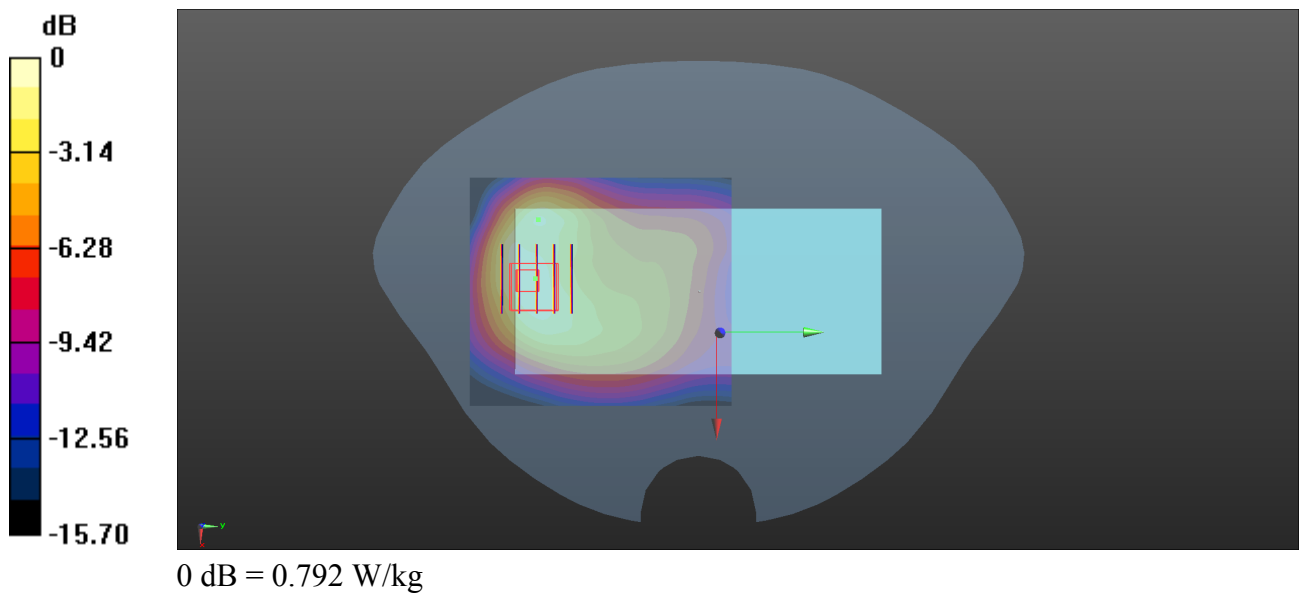
Ch661/Zoom Scan (5x5x7)/Cube 0: Measurement grid: dx=8mm, dy=8mm, dz=5mm

Reference Value = 10.29 V/m; Power Drift = 0.01 dB

Peak SAR (extrapolated) = 1.02 W/kg

SAR(1 g) = 0.653 W/kg; SAR(10 g) = 0.378 W/kg

Maximum value of SAR (measured) = 0.792 W/kg



GSM1900_GPRS(3 TX slots)_Bottom Side_10mm_Ch810_Ant 3

Communication System: UID 0, GSM1900(class 11) (0); Frequency: 1909.8 MHz; Duty Cycle: 1:2.77
Medium: HSL_2000 Medium parameters used: $f = 1910$ MHz; $\sigma = 1.322$ S/m; $\epsilon_r = 39.646$; $\rho = 1000$ kg/m³
Ambient Temperature : 23.2 °C; Liquid Temperature : 22.2 °C

DASY5 Configuration:

- Probe: EX3DV4 - SN7608; ConvF(8.11, 8.11, 8.11) @ 1909.8 MHz; Calibrated: 2023.3.15
- Sensor-Surface: 2mm (Mechanical Surface Detection)
- Electronics: DAE4 Sn480; Calibrated: 2022.6.22
- Phantom: SAM 2; Type: QD000P40CC; Serial: TP:1464
- Measurement SW: DASY52, Version 52.10 (4); SEMCAD X Version 14.6.14 (7501)

Ch810/Area Scan (41x71x1): Interpolated grid: dx=1.500 mm, dy=1.500 mm

Maximum value of SAR (interpolated) = 1.18 W/kg

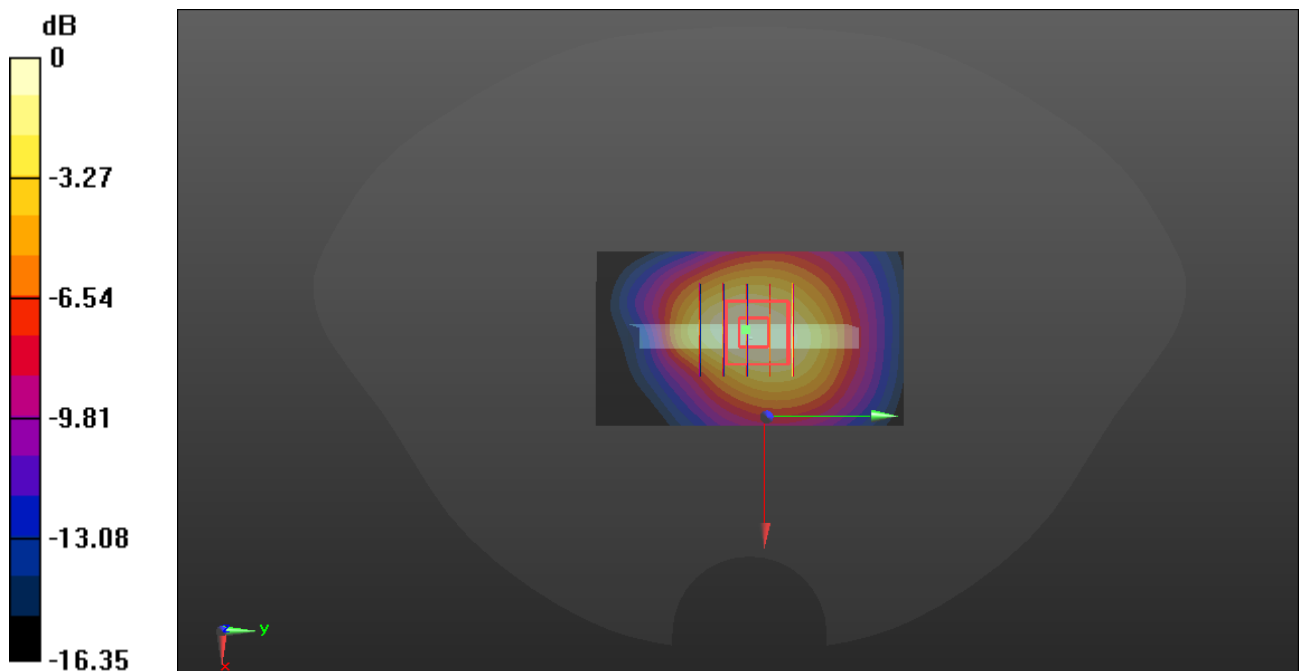
Ch810/Zoom Scan (5x5x7)/Cube 0: Measurement grid: dx=8mm, dy=8mm, dz=5mm

Reference Value = 26.49 V/m; Power Drift = -0.02 dB

Peak SAR (extrapolated) = 1.30 W/kg

SAR(1 g) = 0.807 W/kg; SAR(10 g) = 0.482 W/kg

Maximum value of SAR (measured) = 1.06 W/kg



0 dB = 1.06 W/kg

WCDMA Band II_RMC 12.2Kbps_Back Side_10mm_Ch9400_Ant 3

Communication System: UID 0, UMTS-FDD (0); Frequency: 1880 MHz; Duty Cycle: 1:1

Medium: HSL_1800 Medium parameters used: $f = 1880$ MHz; $\sigma = 1.366$ S/m; $\epsilon_r = 40.167$; $\rho = 1000$ kg/m³

Ambient Temperature : 23.2 °C; Liquid Temperature : 22.1 °C

DASY5 Configuration:

- Probe: EX3DV4 - SN7608; ConvF(8.11, 8.11, 8.11) @ 1880 MHz; Calibrated: 2023.3.15
- Sensor-Surface: 2mm (Mechanical Surface Detection)
- Electronics: DAE4 Sn480; Calibrated: 2022.6.22
- Phantom: SAM 2; Type: QD000P40CC; Serial: TP:1464
- Measurement SW: DASY52, Version 52.10 (4); SEMCAD X Version 14.6.14 (7501)

Ch9400/Area Scan (71x81x1): Interpolated grid: dx=1.500 mm, dy=1.500 mm

Maximum value of SAR (interpolated) = 0.686 W/kg

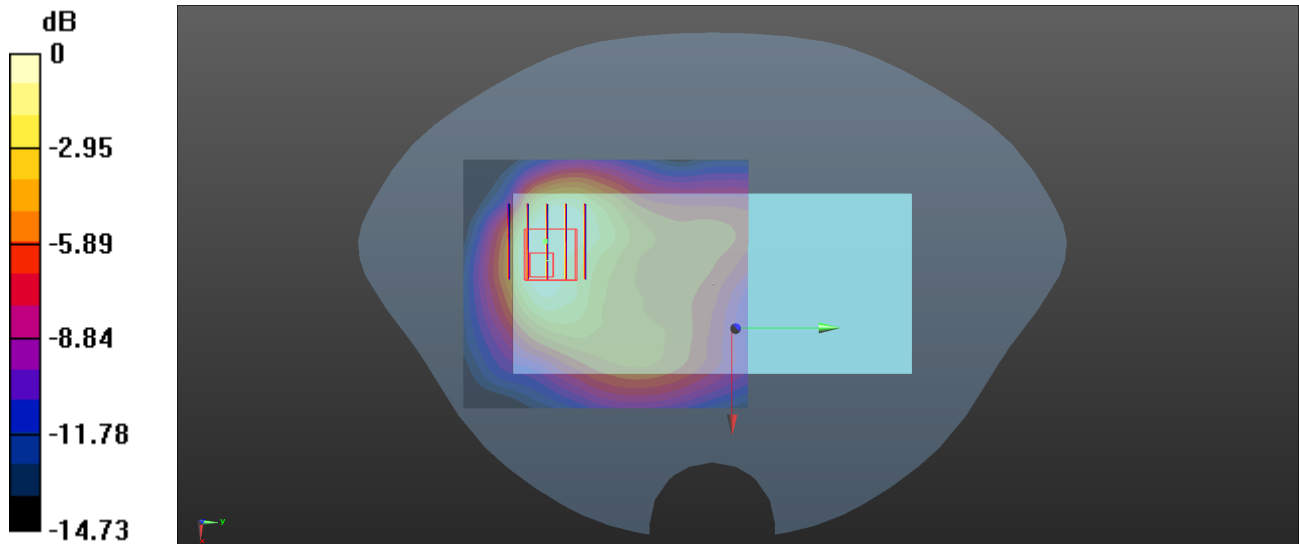
Ch9400/Zoom Scan (5x5x7)/Cube 0: Measurement grid: dx=8mm, dy=8mm, dz=5mm

Reference Value = 9.083 V/m; Power Drift = 0.03 dB

Peak SAR (extrapolated) = 0.704 W/kg

SAR(1 g) = 0.416 W/kg; SAR(10 g) = 0.250 W/kg

Maximum value of SAR (measured) = 0.536 W/kg



0 dB = 0.536 W/kg

WCDMA Band II_RMC 12.2Kbps_Bottom Side_10mm_Ch9538_Ant 3

Communication System: UID 0, UMTS-FDD (0); Frequency: 1907.6 MHz; Duty Cycle: 1:1

Medium: HSL_2000 Medium parameters used: $f = 1908$ MHz; $\sigma = 1.378$ S/m; $\epsilon_r = 39.922$; $\rho = 1000$ kg/m³

Ambient Temperature : 23.2 °C; Liquid Temperature : 22.2 °C

DASY5 Configuration:

- Probe: EX3DV4 - SN7608; ConvF(8.11, 8.11, 8.11) @ 1907.6 MHz; Calibrated: 2023.3.15
- Sensor-Surface: 2mm (Mechanical Surface Detection)
- Electronics: DAE4 Sn480; Calibrated: 2022.6.22
- Phantom: SAM 2; Type: QD000P40CC; Serial: TP:1464
- Measurement SW: DASY52, Version 52.10 (4); SEMCAD X Version 14.6.14 (7501)

Ch9538/Area Scan (41x81x1): Interpolated grid: dx=1.500 mm, dy=1.500 mm

Maximum value of SAR (interpolated) = 0.969 W/kg

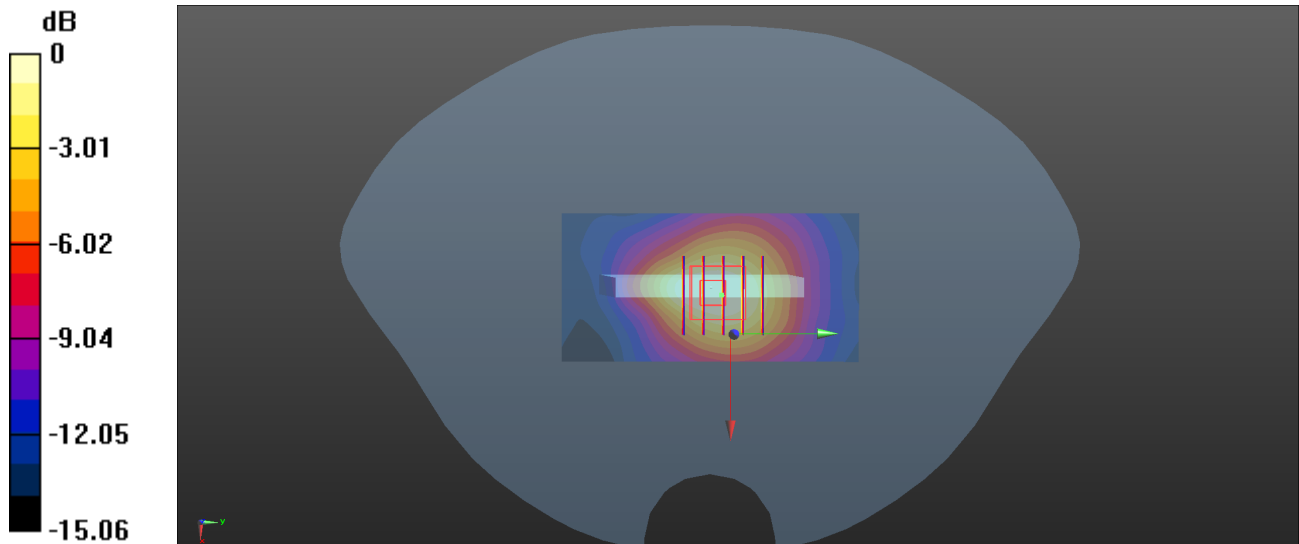
Ch9538/Zoom Scan (5x5x7)/Cube 0: Measurement grid: dx=8mm, dy=8mm, dz=5mm

Reference Value = 24.14 V/m; Power Drift = -0.03 dB

Peak SAR (extrapolated) = 1.12 W/kg

SAR(1 g) = 0.704 W/kg; SAR(10 g) = 0.418 W/kg

Maximum value of SAR (measured) = 0.911 W/kg



0 dB = 0.911 W/kg

WCDMA Band IV_RMC 12.2Kbps_Back Side_10mm_Ch1413_Ant 3

Communication System: UID 0, UMTS-FDD (0); Frequency: 1732.6 MHz; Duty Cycle: 1:1

Medium: HSL_1800 Medium parameters used: $f = 1733$ MHz; $\sigma = 1.412$ S/m; $\epsilon_r = 39.814$; $\rho = 1000$ kg/m³

Ambient Temperature : 23.2 °C; Liquid Temperature : 22.1 °C

DASY5 Configuration:

- Probe: EX3DV4 - SN7608; ConvF(8.4, 8.4, 8.4) @ 1732.6 MHz; Calibrated: 2023.3.15
- Sensor-Surface: 2mm (Mechanical Surface Detection)
- Electronics: DAE4 Sn480; Calibrated: 2022.6.22
- Phantom: SAM 2; Type: QD000P40CC; Serial: TP:1464
- Measurement SW: DASY52, Version 52.10 (4); SEMCAD X Version 14.6.14 (7501)

Ch1413/Area Scan (71x81x1): Interpolated grid: dx=1.500 mm, dy=1.500 mm

Maximum value of SAR (interpolated) = 0.530 W/kg

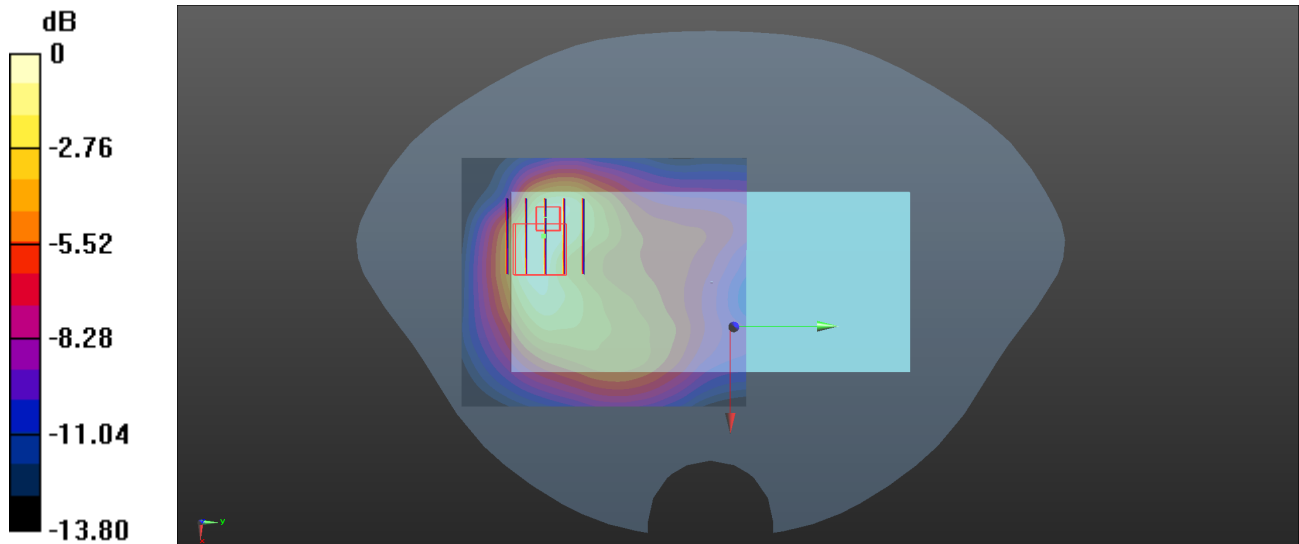
Ch1413/Zoom Scan (5x5x7)/Cube 0: Measurement grid: dx=8mm, dy=8mm, dz=5mm

Reference Value = 6.900 V/m; Power Drift = 0.15 dB

Peak SAR (extrapolated) = 0.593 W/kg

SAR(1 g) = 0.402 W/kg; SAR(10 g) = 0.245 W/kg

Maximum value of SAR (measured) = 0.456 W/kg



0 dB = 0.456 W/kg

WCDMA Band IV_RMC 12.2Kbps_Bottom Side_10mm_Ch1413_Ant 3

Communication System: UID 0, UMTS-FDD (0); Frequency: 1732.6 MHz; Duty Cycle: 1:1

Medium: HSL_1800 Medium parameters used: $f = 1733$ MHz; $\sigma = 1.366$ S/m; $\epsilon_r = 41.367$; $\rho = 1000$ kg/m³

Ambient Temperature : 23.2 °C; Liquid Temperature : 22.1 °C

DASY5 Configuration:

- Probe: EX3DV4 - SN7608; ConvF(8.4, 8.4, 8.4) @ 1732.6 MHz; Calibrated: 2023.3.15
- Sensor-Surface: 2mm (Mechanical Surface Detection)
- Electronics: DAE4 Sn480; Calibrated: 2022.6.22
- Phantom: SAM 2; Type: QD000P40CC; Serial: TP:1464
- Measurement SW: DASY52, Version 52.10 (4); SEMCAD X Version 14.6.14 (7501)

Ch1413/Area Scan (41x71x1): Interpolated grid: dx=1.500 mm, dy=1.500 mm

Maximum value of SAR (interpolated) = 1.19 W/kg

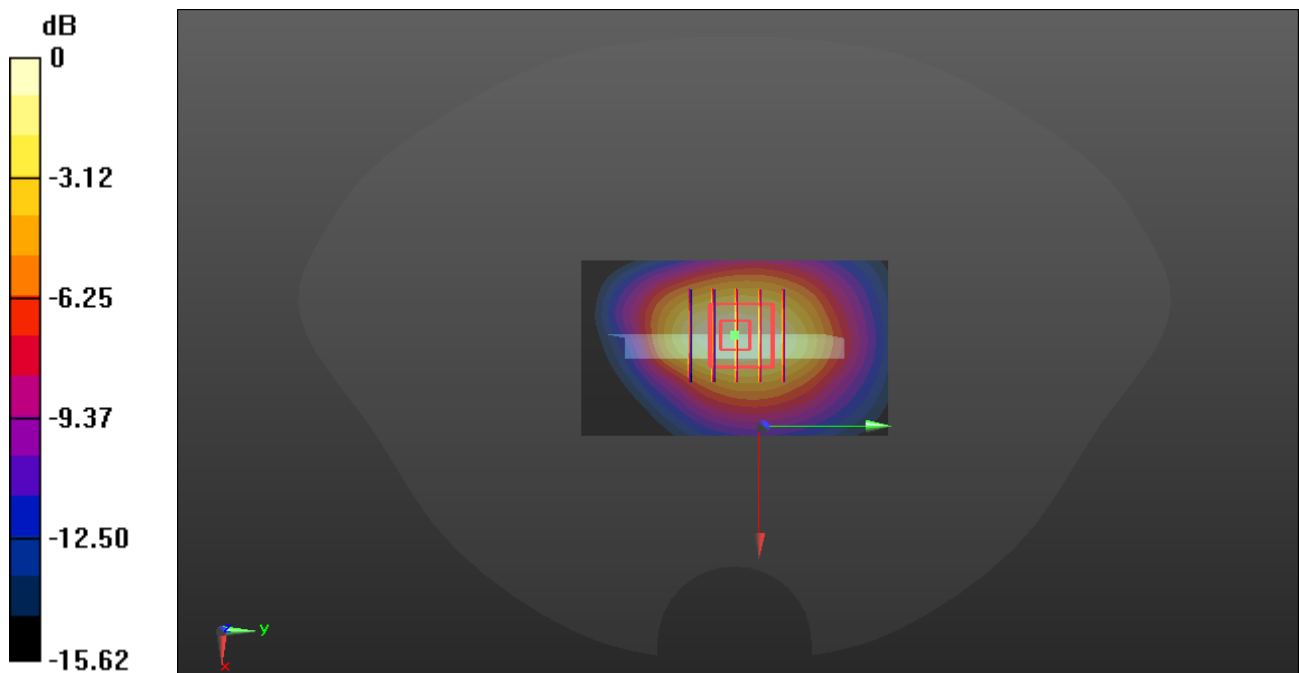
Ch1413/Zoom Scan (5x5x7)/Cube 0: Measurement grid: dx=8mm, dy=8mm, dz=5mm

Reference Value = 25.70 V/m; Power Drift = -0.05 dB

Peak SAR (extrapolated) = 1.30 W/kg

SAR(1 g) = 0.834 W/kg; SAR(10 g) = 0.499 W/kg

Maximum value of SAR (measured) = 1.09 W/kg



0 dB = 1.09 W/kg

WCDMA Band V_RMC 12.2Kbps_Back Side_10mm_Ch4182_Ant 3

Communication System: UID 0, UMTS-FDD (0); Frequency: 836.4 MHz; Duty Cycle: 1:1

Medium: HSL_900 Medium parameters used: $f = 836.4$ MHz; $\sigma = 0.958$ S/m; $\epsilon_r = 40.843$; $\rho = 1000$ kg/m³

Ambient Temperature : 23.2 °C; Liquid Temperature : 22.1 °C

DASY5 Configuration:

- Probe: EX3DV4 - SN7608; ConvF(10.45, 10.45, 10.45) @ 836.4 MHz; Calibrated: 2023.3.15
- Sensor-Surface: 2mm (Mechanical Surface Detection)
- Electronics: DAE4 Sn480; Calibrated: 2022.6.22
- Phantom: SAM 2; Type: QD000P40CC; Serial: TP:1464
- Measurement SW: DASY52, Version 52.10 (4); SEMCAD X Version 14.6.14 (7501)

Ch4182/Area Scan (71x71x1): Interpolated grid: dx=1.500 mm, dy=1.500 mm

Maximum value of SAR (interpolated) = 0.373 W/kg

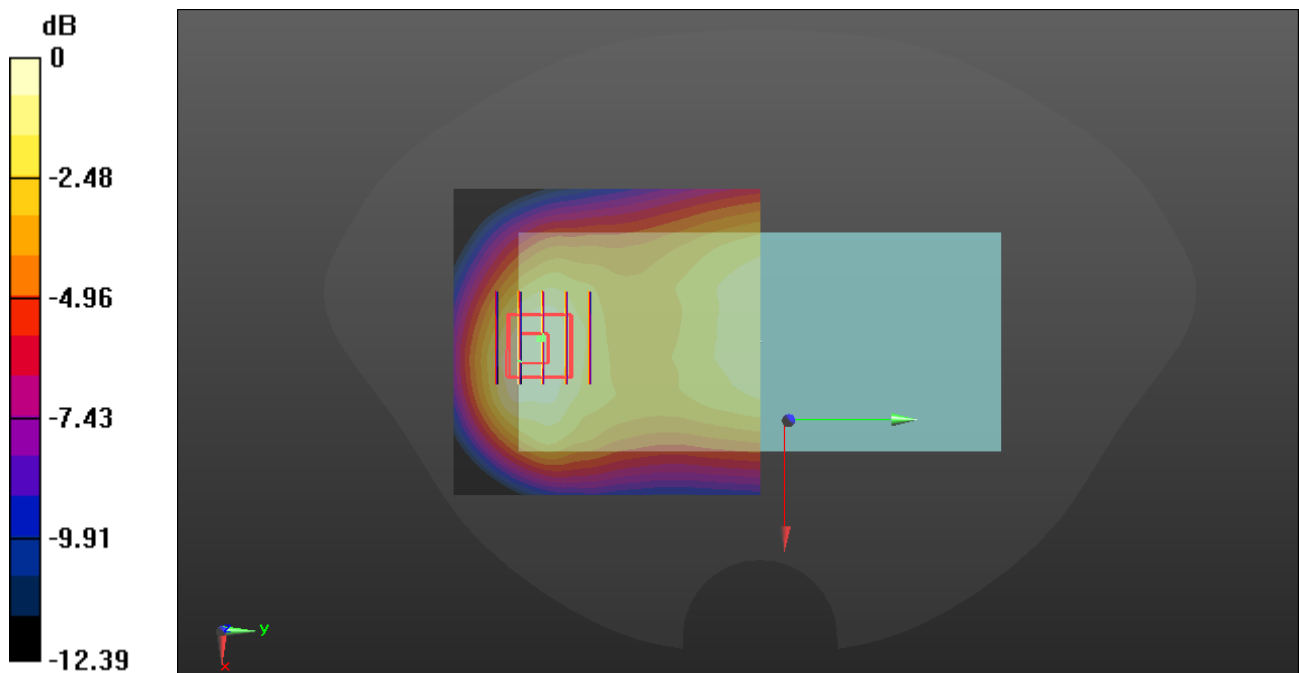
Ch4182/Zoom Scan (5x5x7)/Cube 0: Measurement grid: dx=8mm, dy=8mm, dz=5mm

Reference Value = 17.17 V/m; Power Drift = -0.05 dB

Peak SAR (extrapolated) = 0.481 W/kg

SAR(1 g) = 0.290 W/kg; SAR(10 g) = 0.181 W/kg

Maximum value of SAR (measured) = 0.374 W/kg



0 dB = 0.374 W/kg

LTE Band 2_20MHz_QPSK_1RB_0Offset_Back Side_10mm_Ch18900_Ant 3

Communication System: UID 0, LTE (0); Frequency: 1880 MHz; Duty Cycle: 1:1

Medium: HSL_1800 Medium parameters used: $f = 1880$ MHz; $\sigma = 1.366$ S/m; $\epsilon_r = 40.167$; $\rho = 1000$ kg/m³

Ambient Temperature : 23.2 °C; Liquid Temperature : 22.1 °C

DASY5 Configuration:

- Probe: EX3DV4 - SN7608; ConvF(8.11, 8.11, 8.11) @ 1880 MHz; Calibrated: 2023.3.15
- Sensor-Surface: 2mm (Mechanical Surface Detection)
- Electronics: DAE4 Sn480; Calibrated: 2022.6.22
- Phantom: SAM 2; Type: QD000P40CC; Serial: TP:1464
- Measurement SW: DASY52, Version 52.10 (4); SEMCAD X Version 14.6.14 (7501)

Ch18900/Area Scan (71x81x1): Interpolated grid: dx=1.500 mm, dy=1.500 mm

Maximum value of SAR (interpolated) = 0.615 W/kg

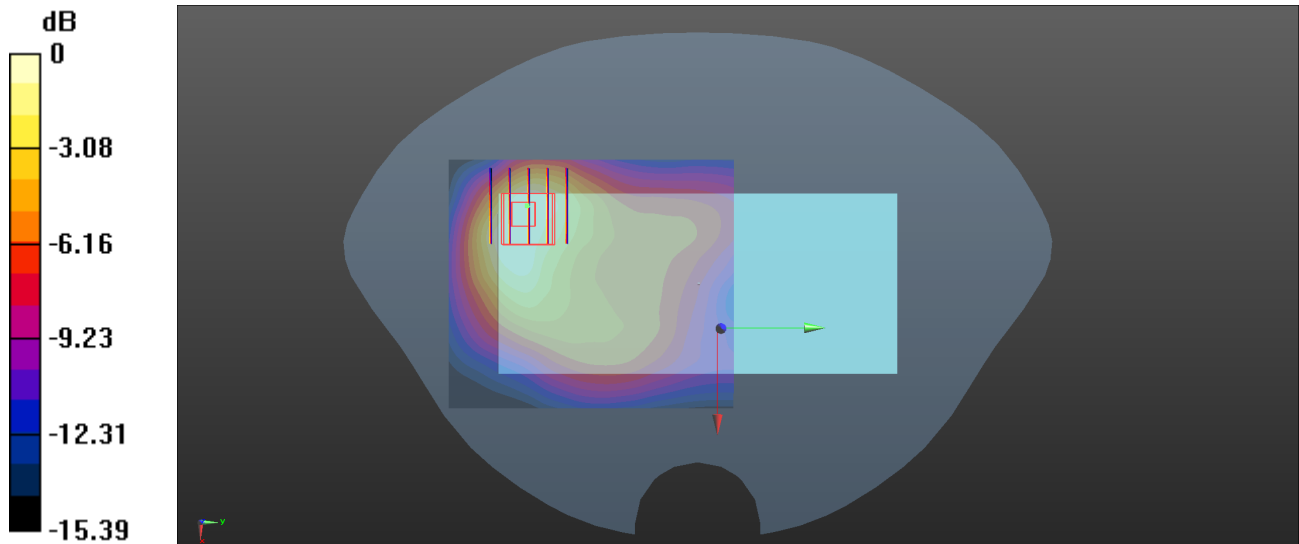
Ch18900/Zoom Scan (5x5x7)/Cube 0: Measurement grid: dx=8mm, dy=8mm, dz=5mm

Reference Value = 7.432 V/m; Power Drift = 0.11 dB

Peak SAR (extrapolated) = 0.720 W/kg

SAR(1 g) = 0.394 W/kg; SAR(10 g) = 0.234 W/kg

Maximum value of SAR (measured) = 0.548 W/kg



0 dB = 0.548 W/kg

LTE Band 2_20MHz_QPSK_1RB_0Offset_Bottom Side_10mm_Ch19100_Ant 3

Communication System: UID 0, LTE (0); Frequency: 1900 MHz; Duty Cycle: 1:1

Medium: HSL_2000 Medium parameters used: $f = 1900$ MHz; $\sigma = 1.319$ S/m; $\epsilon_r = 39.745$; $\rho = 1000$ kg/m³
Ambient Temperature : 23.2 °C ; Liquid Temperature : 22.2 °C

DASY5 Configuration:

- Probe: EX3DV4 - SN7608; ConvF(8.11, 8.11, 8.11) @ 1900 MHz; Calibrated: 2023.3.15
- Sensor-Surface: 2mm (Mechanical Surface Detection)
- Electronics: DAE4 Sn480; Calibrated: 2022.6.22
- Phantom: SAM 2; Type: QD000P40CC; Serial: TP:1464
- Measurement SW: DASY52, Version 52.10 (4); SEMCAD X Version 14.6.14 (7501)

Ch19100/Area Scan (41x71x1): Interpolated grid: dx=1.500 mm, dy=1.500 mm

Maximum value of SAR (interpolated) = 1.16 W/kg

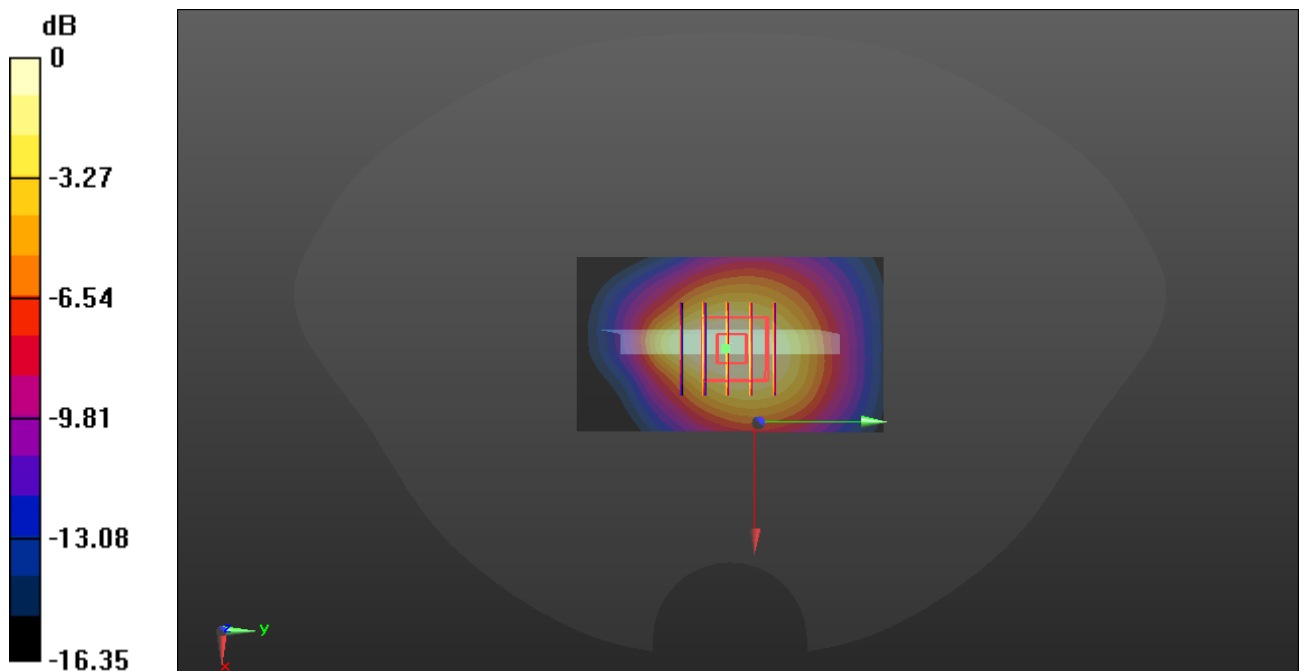
Ch19100/Zoom Scan (5x5x7)/Cube 0: Measurement grid: dx=8mm, dy=8mm, dz=5mm

Reference Value = 26.23 V/m; Power Drift = -0.08 dB

Peak SAR (extrapolated) = 1.19 W/kg

SAR(1 g) = 0.742 W/kg; SAR(10 g) = 0.443 W/kg

Maximum value of SAR (measured) = 0.971 W/kg



0 dB = 0.971 W/kg

LTE Band 5_10MHz_QPSK_1RB_0Offset_Back Side_10mm_Ch20525_Ant 3

Communication System: UID 0, LTE (0); Frequency: 836.5 MHz; Duty Cycle: 1:1

Medium: HSL_900 Medium parameters used: $f = 836.5$ MHz; $\sigma = 0.958$ S/m; $\epsilon_r = 40.846$; $\rho = 1000$ kg/m³

Ambient Temperature : 23.2 °C; Liquid Temperature : 22.1 °C

DASY5 Configuration:

- Probe: EX3DV4 - SN7608; ConvF(10.45, 10.45, 10.45) @ 836.5 MHz; Calibrated: 2023.3.15
- Sensor-Surface: 2mm (Mechanical Surface Detection)
- Electronics: DAE4 Sn480; Calibrated: 2022.6.22
- Phantom: SAM 2; Type: QD000P40CC; Serial: TP:1464
- Measurement SW: DASY52, Version 52.10 (4); SEMCAD X Version 14.6.14 (7501)

Ch20525/Area Scan (71x71x1): Interpolated grid: dx=1.500 mm, dy=1.500 mm

Maximum value of SAR (interpolated) = 0.424 W/kg

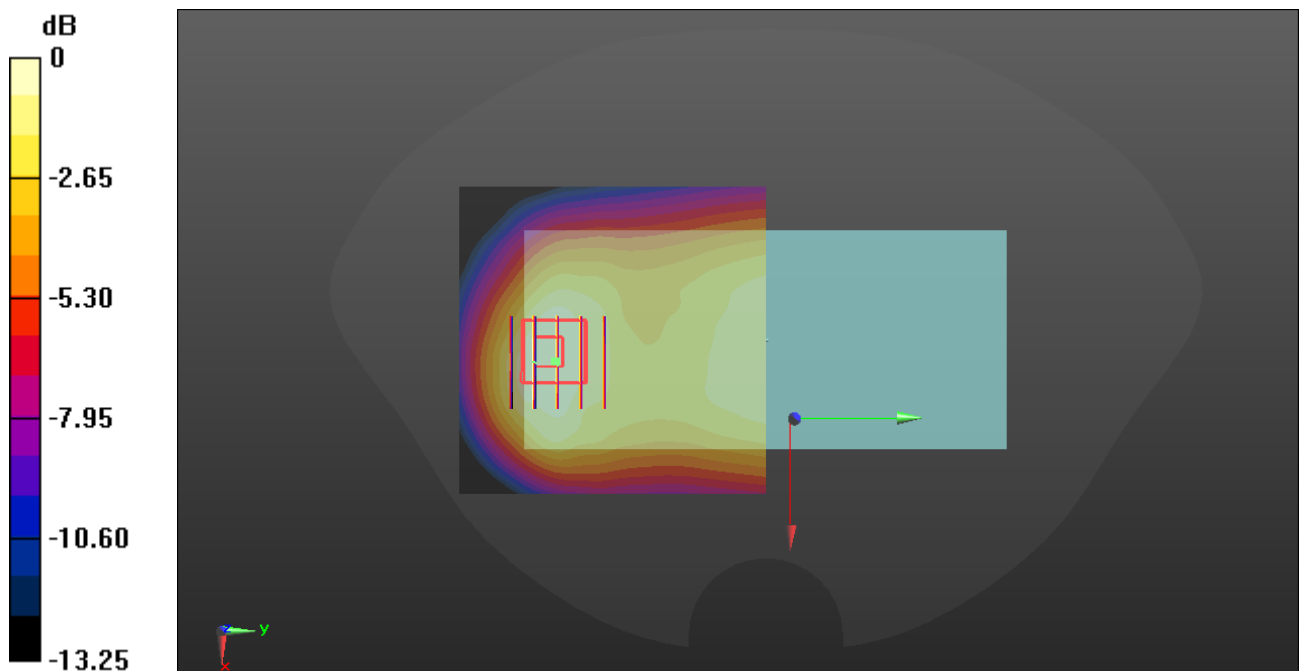
Ch20525/Zoom Scan (5x5x7)/Cube 0: Measurement grid: dx=8mm, dy=8mm, dz=5mm

Reference Value = 17.57 V/m; Power Drift = -0.03 dB

Peak SAR (extrapolated) = 0.497 W/kg

SAR(1 g) = 0.296 W/kg; SAR(10 g) = 0.185 W/kg

Maximum value of SAR (measured) = 0.387 W/kg



0 dB = 0.387 W/kg

LTE Band 7_20MHz_QPSK_1RB_0Offset_Back Side_10mm_Ch21100_Ant 3

Communication System: UID 0, LTE (0); Frequency: 2535 MHz; Duty Cycle: 1:1

Medium: HSL_2600 Medium parameters used: $f = 2535$ MHz; $\sigma = 1.911$ S/m; $\epsilon_r = 38.489$; $\rho = 1000$ kg/m³

Ambient Temperature : 23.2 °C; Liquid Temperature : 22.3 °C

DASY5 Configuration:

- Probe: EX3DV4 - SN7608; ConvF(7.34, 7.34, 7.34) @ 2535 MHz; Calibrated: 2023.3.15
- Sensor-Surface: 2mm (Mechanical Surface Detection)
- Electronics: DAE4 Sn480; Calibrated: 2022.6.22
- Phantom: SAM 2; Type: QD000P40CC; Serial: TP:1464
- Measurement SW: DASY52, Version 52.10 (4); SEMCAD X Version 14.6.14 (7501)

Ch21100/Area Scan (91x101x1): Interpolated grid: dx=1.200 mm, dy=1.200 mm

Maximum value of SAR (interpolated) = 0.589 W/kg

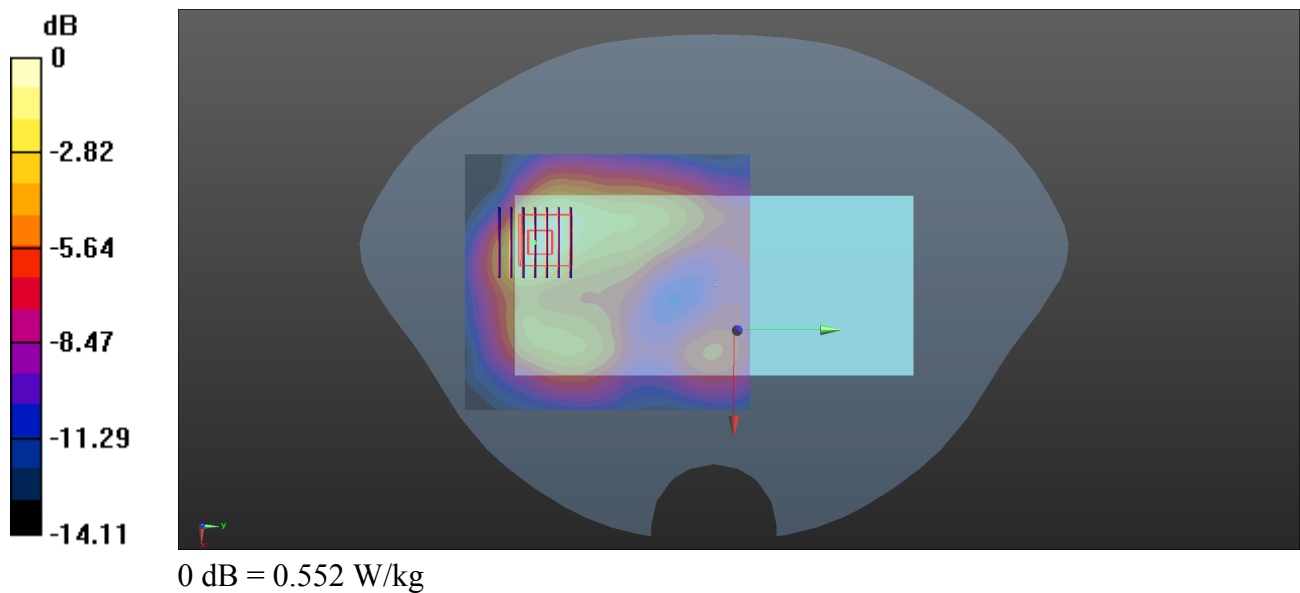
Ch21100/Zoom Scan (7x7x7)/Cube 0: Measurement grid: dx=5mm, dy=5mm, dz=5mm

Reference Value = 5.675 V/m; Power Drift = 0.11 dB

Peak SAR (extrapolated) = 0.714 W/kg

SAR(1 g) = 0.392 W/kg; SAR(10 g) = 0.211 W/kg

Maximum value of SAR (measured) = 0.552 W/kg



LTE Band 7_20MHz_QPSK_1RB_0Offset_Bottom Side_10mm_Ch21100_Ant 3

Communication System: UID 0, LTE (0); Frequency: 2535 MHz; Duty Cycle: 1:1

Medium: HSL_2600 Medium parameters used: $f = 2535$ MHz; $\sigma = 1.911$ S/m; $\epsilon_r = 38.489$; $\rho = 1000$ kg/m³

Ambient Temperature : 23.2 °C ; Liquid Temperature : 22.3 °C

DASY5 Configuration:

- Probe: EX3DV4 - SN7608; ConvF(7.34, 7.34, 7.34) @ 2535 MHz; Calibrated: 2023.3.15
- Sensor-Surface: 2mm (Mechanical Surface Detection)
- Electronics: DAE4 Sn480; Calibrated: 2022.6.22
- Phantom: SAM 2; Type: QD000P40CC; Serial: TP:1464
- Measurement SW: DASY52, Version 52.10 (4); SEMCAD X Version 14.6.14 (7501)

Ch21100/Area Scan (51x101x1): Interpolated grid: dx=1.200 mm, dy=1.200 mm

Maximum value of SAR (interpolated) = 0.693 W/kg

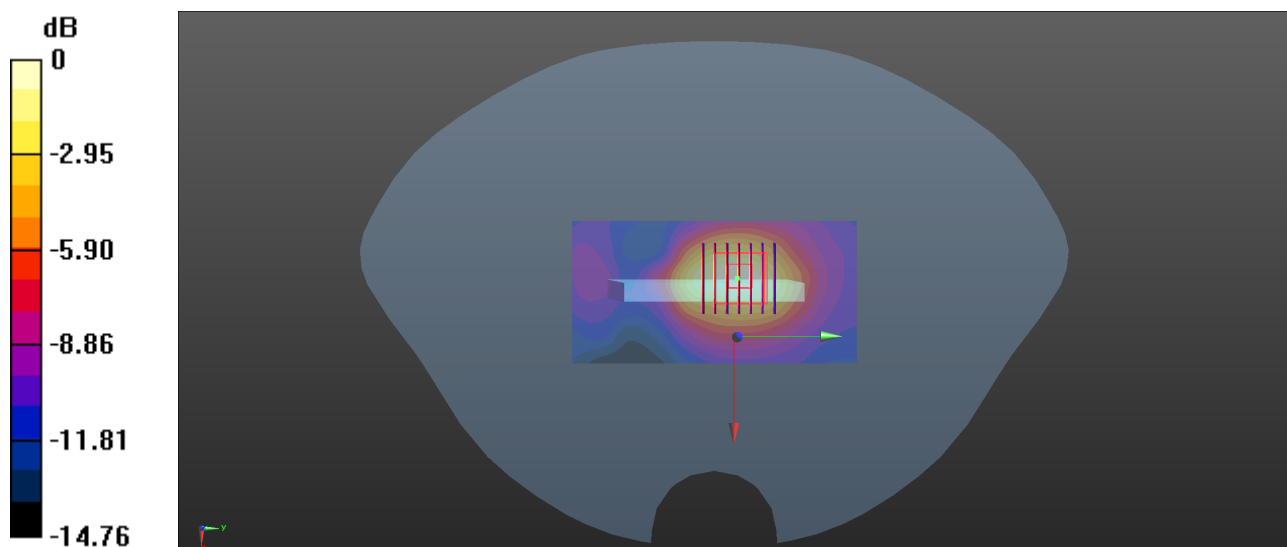
Ch21100/Zoom Scan (7x7x7)/Cube 0: Measurement grid: dx=5mm, dy=5mm, dz=5mm

Reference Value = 13.35 V/m; Power Drift = 0.04 dB

Peak SAR (extrapolated) = 0.894 W/kg

SAR(1 g) = 0.568 W/kg; SAR(10 g) = 0.300 W/kg

Maximum value of SAR (measured) = 0.690 W/kg



LTE Band 13_10MHz_QPSK_1RB_0Offset_Back Side_10mm_Ch23230_Ant 3

Communication System: UID 0, LTE (0); Frequency: 782 MHz; Duty Cycle: 1:1

Medium: HSL_750 Medium parameters used: $f = 782$ MHz; $\sigma = 0.938$ S/m; $\epsilon_r = 42.016$; $\rho = 1000$ kg/m³

Ambient Temperature : 23.2 °C; Liquid Temperature : 22.1 °C

DASY5 Configuration:

- Probe: EX3DV4 - SN7608; ConvF(10.45, 10.45, 10.45) @ 782 MHz; Calibrated: 2023.3.15
- Sensor-Surface: 2mm (Mechanical Surface Detection)
- Electronics: DAE4 Sn480; Calibrated: 2022.6.22
- Phantom: SAM 2; Type: QD000P40CC; Serial: TP:1464
- Measurement SW: DASY52, Version 52.10 (4); SEMCAD X Version 14.6.14 (7501)

Ch23230/Area Scan (71x121x1): Interpolated grid: dx=1.500 mm, dy=1.500 mm

Maximum value of SAR (interpolated) = 0.358 W/kg

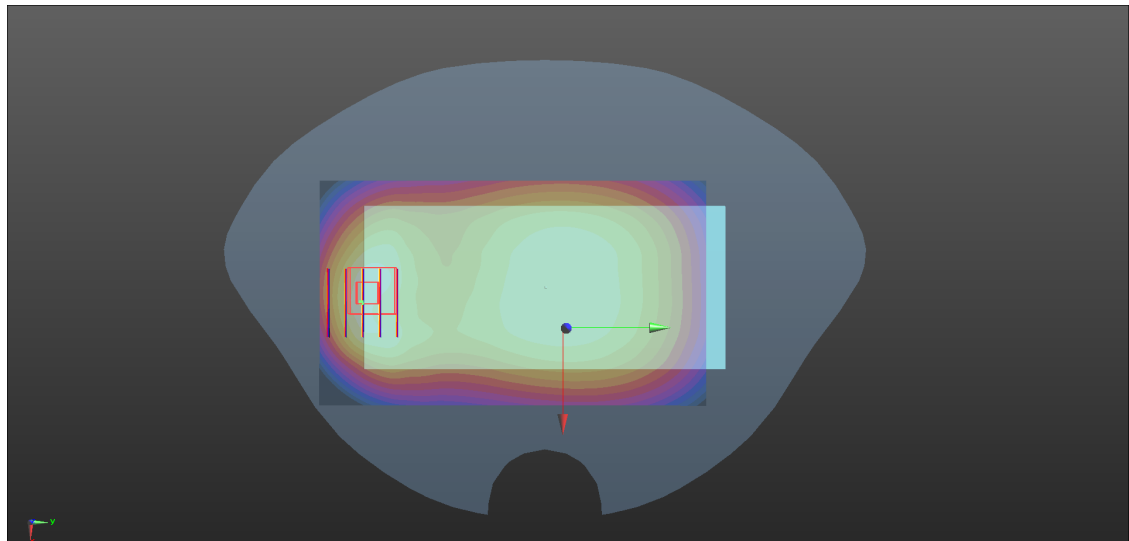
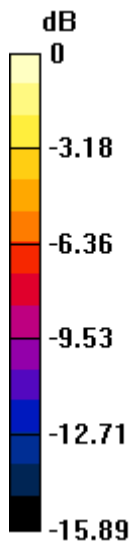
Ch23230/Zoom Scan (5x5x7)/Cube 0: Measurement grid: dx=8mm, dy=8mm, dz=5mm

Reference Value = 17.52 V/m; Power Drift = -0.04 dB

Peak SAR (extrapolated) = 0.515 W/kg

SAR(1 g) = 0.279 W/kg; SAR(10 g) = 0.164 W/kg

Maximum value of SAR (measured) = 0.387 W/kg



0 dB = 0.387 W/kg

LTE Band 38_20MHz_QPSK_1RB_0Offset_Back Side_10mm_Ch38000_Ant 2

Communication System: UID 0, LTE (0); Frequency: 2595 MHz; Duty Cycle: 1:1.59

Medium: HSL_2600 Medium parameters used: $f = 2595$ MHz; $\sigma = 1.98$ S/m; $\epsilon_r = 38.287$; $\rho = 1000$ kg/m³

Ambient Temperature : 23.2 °C; Liquid Temperature : 22.3 °C

DASY5 Configuration:

- Probe: EX3DV4 - SN7608; ConvF(7.34, 7.34, 7.34) @ 2595 MHz; Calibrated: 2023.3.15
- Sensor-Surface: 2mm (Mechanical Surface Detection)
- Electronics: DAE4 Sn480; Calibrated: 2022.6.22
- Phantom: SAM 2; Type: QD000P40CC; Serial: TP:1464
- Measurement SW: DASY52, Version 52.10 (4); SEMCAD X Version 14.6.14 (7501)

Ch38000/Area Scan (81x91x1): Interpolated grid: dx=1.200 mm, dy=1.200 mm

Maximum value of SAR (interpolated) = 0.538 W/kg

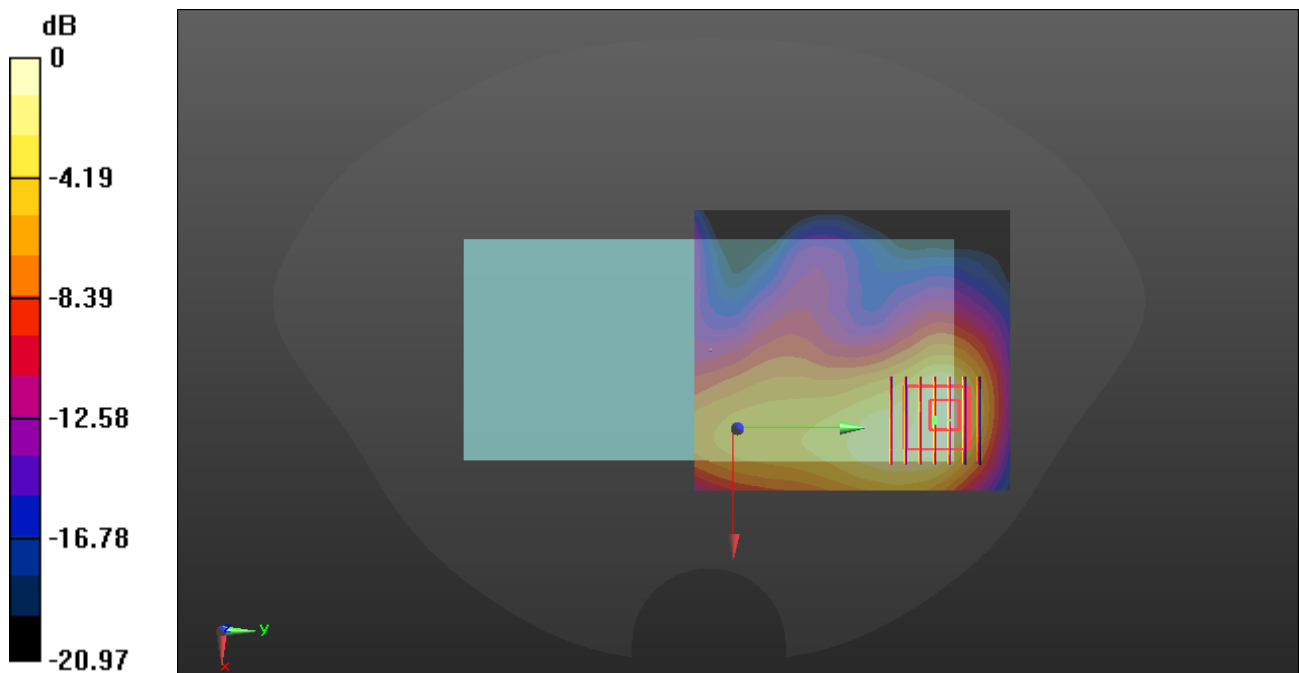
Ch38000/Zoom Scan (7x7x7)/Cube 0: Measurement grid: dx=5mm, dy=5mm, dz=5mm

Reference Value = 1.979 V/m; Power Drift = 0.05 dB

Peak SAR (extrapolated) = 0.702 W/kg

SAR(1 g) = 0.346 W/kg; SAR(10 g) = 0.170 W/kg

Maximum value of SAR (measured) = 0.519 W/kg



LTE Band 40_10MHz_QPSK_1RB_0Offset_Back Side_10mm_Ch39200_Ant 3

Communication System: UID 0, LTE (0); Frequency: 2390 MHz; Duty Cycle: 1:1.59

Medium: HSL_2300 Medium parameters used: $f = 2390$ MHz; $\sigma = 1.729$ S/m; $\epsilon_r = 38.909$; $\rho = 1000$ kg/m³

Ambient Temperature : 23.2 °C; Liquid Temperature : 22.2 °C

DASY5 Configuration:

- Probe: EX3DV4 - SN7608; ConvF(7.85, 7.85, 7.85) @ 2390 MHz; Calibrated: 2023.3.15
- Sensor-Surface: 2mm (Mechanical Surface Detection)
- Electronics: DAE4 Sn480; Calibrated: 2022.6.22
- Phantom: SAM 2; Type: QD000P40CC; Serial: TP:1464
- Measurement SW: DASY52, Version 52.10 (4); SEMCAD X Version 14.6.14 (7501)

Ch39200/Area Scan (91x101x1): Interpolated grid: dx=1.200 mm, dy=1.200 mm

Maximum value of SAR (interpolated) = 0.282 W/kg

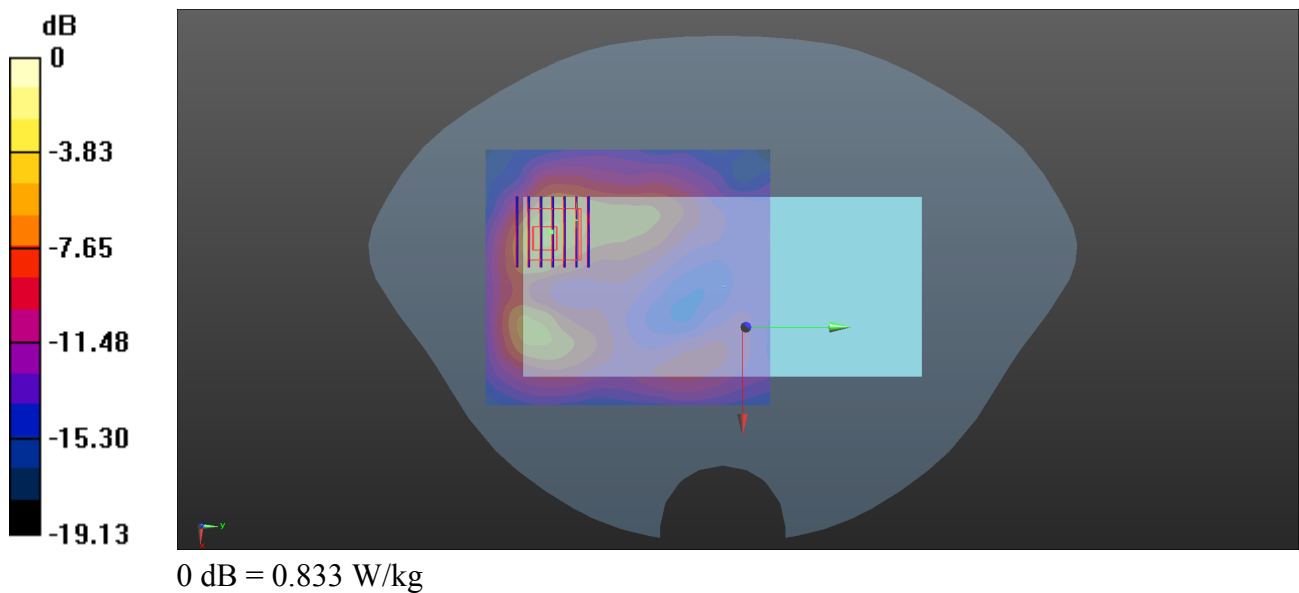
Ch39200/Zoom Scan (7x7x7)/Cube 0: Measurement grid: dx=5mm, dy=5mm, dz=5mm

Reference Value = 4.279 V/m; Power Drift = 0.07 dB

Peak SAR (extrapolated) = 0.833 W/kg

SAR(1 g) = 0.199 W/kg; SAR(10 g) = 0.108 W/kg

Maximum value of SAR (measured) = 0.833 W/kg



LTE Band 40_10MHz_QPSK_1RB_0Offset_Bottom Side_10mm_Ch39200_Ant 3

Communication System: UID 0, LTE (0); Frequency: 2355 MHz; Duty Cycle: 1:1.59

Medium: HSL_2300 Medium parameters used: $f = 2355$ MHz; $\sigma = 1.709$ S/m; $\epsilon_r = 39.181$; $\rho = 1000$ kg/m³

Ambient Temperature : 23.2 °C; Liquid Temperature : 22.2 °C

DASY5 Configuration:

- Probe: EX3DV4 - SN7608; ConvF(7.85, 7.85, 7.85) @ 2390 MHz; Calibrated: 2023.3.15
- Sensor-Surface: 2mm (Mechanical Surface Detection)
- Electronics: DAE4 Sn480; Calibrated: 2022.6.22
- Phantom: SAM 2; Type: QD000P40CC; Serial: TP:1464
- Measurement SW: DASY52, Version 52.10 (4); SEMCAD X Version 14.6.14 (7501)

Ch39200/Area Scan (51x101x1): Interpolated grid: dx=1.200 mm, dy=1.200 mm

Maximum value of SAR (interpolated) = 0.578 W/kg

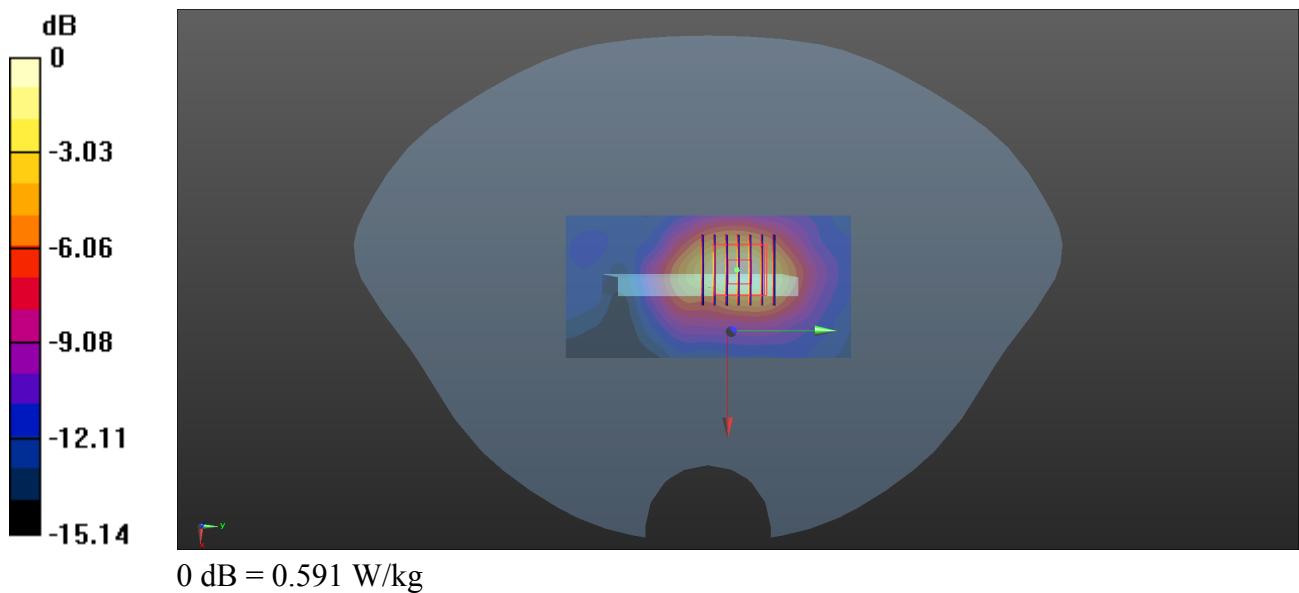
Ch39200/Zoom Scan (7x7x7)/Cube 0: Measurement grid: dx=5mm, dy=5mm, dz=5mm

Reference Value = 10.96 V/m; Power Drift = 0.10 dB

Peak SAR (extrapolated) = 0.761 W/kg

SAR(1 g) = 0.406 W/kg; SAR(10 g) = 0.207 W/kg

Maximum value of SAR (measured) = 0.591 W/kg



LTE Band 41_20MHz_QPSK_1RB_0Offset_Back Side_10mm_Ch40620_Ant 2

Communication System: UID 0, LTE (0); Frequency: 2593 MHz; Duty Cycle: 1:1.59

Medium: HSL_2600 Medium parameters used: $f = 2593$ MHz; $\sigma = 1.973$ S/m; $\epsilon_r = 38.214$; $\rho = 1000$ kg/m³

Ambient Temperature : 23.2 °C; Liquid Temperature : 22.3 °C

DASY5 Configuration:

- Probe: EX3DV4 - SN7608; ConvF(7.34, 7.34, 7.34) @ 2593 MHz; Calibrated: 2023.3.15
- Sensor-Surface: 2mm (Mechanical Surface Detection)
- Electronics: DAE4 Sn480; Calibrated: 2022.6.22
- Phantom: SAM 2; Type: QD000P40CC; Serial: TP:1464
- Measurement SW: DASY52, Version 52.10 (4); SEMCAD X Version 14.6.14 (7501)

Ch40620/Area Scan (91x101x1): Interpolated grid: dx=1.200 mm, dy=1.200 mm

Maximum value of SAR (interpolated) = 0.366 W/kg

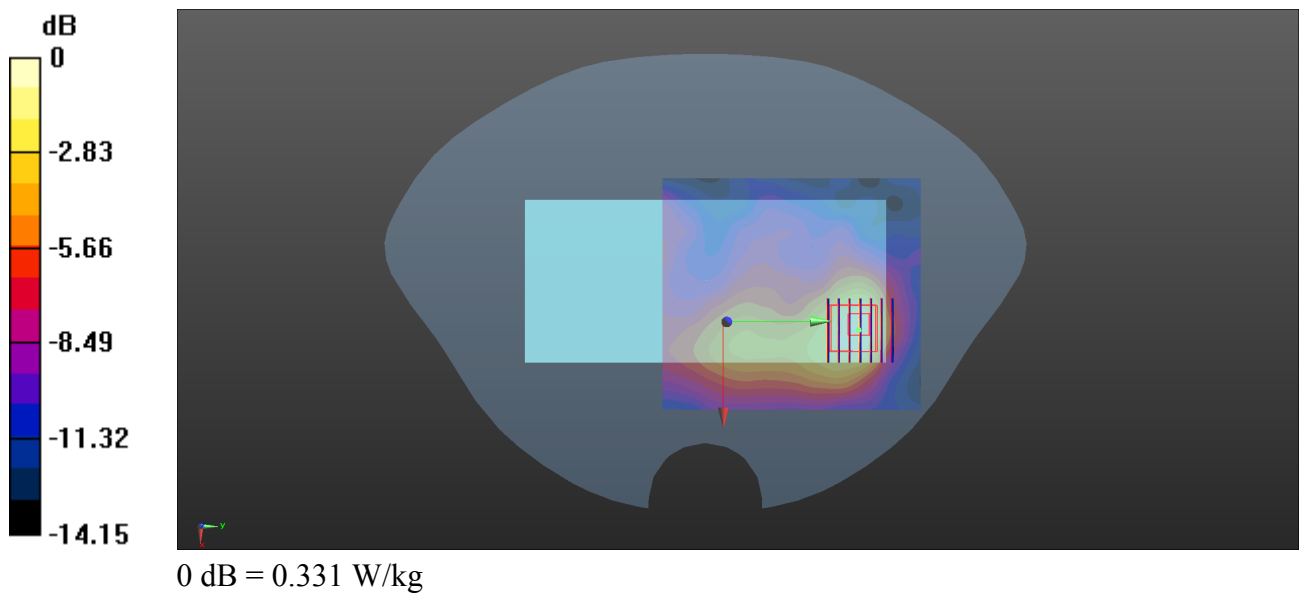
Ch40620/Zoom Scan (7x7x7)/Cube 0: Measurement grid: dx=5mm, dy=5mm, dz=5mm

Reference Value = 3.928 V/m; Power Drift = 0.14 dB

Peak SAR (extrapolated) = 0.453 W/kg

SAR(1 g) = 0.225 W/kg; SAR(10 g) = 0.119 W/kg

Maximum value of SAR (measured) = 0.331 W/kg



LTE Band 66_20MHz_QPSK_1RB_0Offset_Back Side_10mm_Ch132322_Ant 3

Communication System: UID 0, LTE (0); Frequency: 1745 MHz; Duty Cycle: 1:1

Medium: HSL_1800 Medium parameters used: $f = 1745$ MHz; $\sigma = 1.438$ S/m; $\epsilon_r = 39.567$; $\rho = 1000$ kg/m³

Ambient Temperature : 23.2 °C; Liquid Temperature : 22.1 °C

DASY5 Configuration:

- Probe: EX3DV4 - SN7608; ConvF(8.4, 8.4, 8.4) @ 1732.6 MHz; Calibrated: 2023.3.15
- Sensor-Surface: 2mm (Mechanical Surface Detection)
- Electronics: DAE4 Sn480; Calibrated: 2022.6.22
- Phantom: SAM 2; Type: QD000P40CC; Serial: TP:1464
- Measurement SW: DASY52, Version 52.10 (4); SEMCAD X Version 14.6.14 (7501)

Ch132322/Area Scan (71x81x1): Interpolated grid: dx=1.500 mm, dy=1.500 mm

Maximum value of SAR (interpolated) = 0.547 W/kg

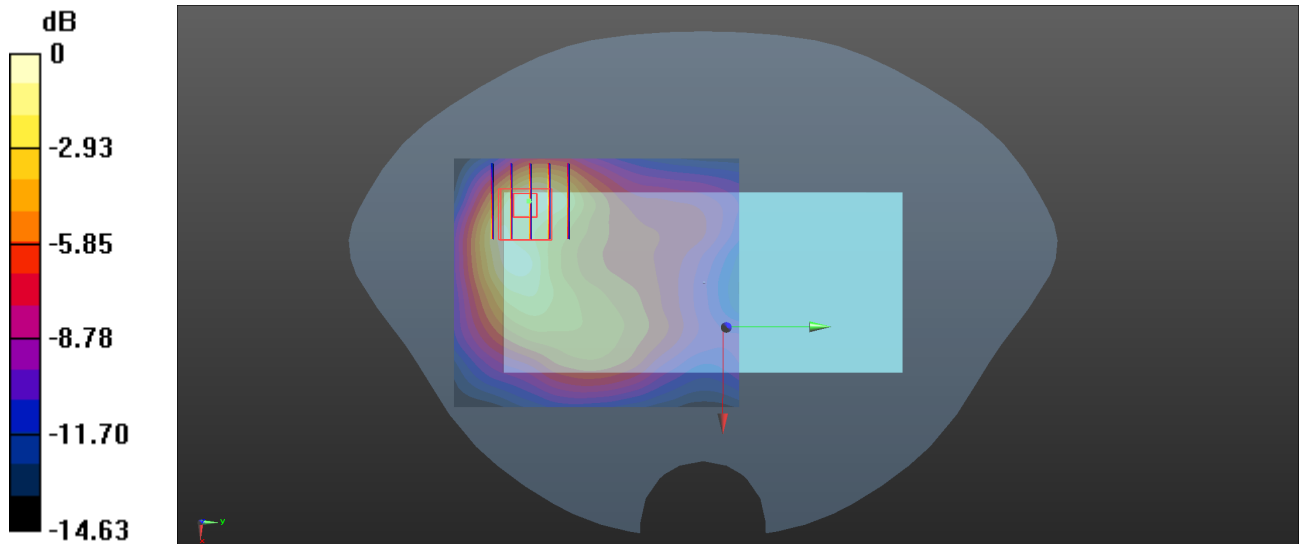
Ch132322/Zoom Scan (5x5x7)/Cube 0: Measurement grid: dx=8mm, dy=8mm, dz=5mm

Reference Value = 5.835 V/m; Power Drift = 0.06 dB

Peak SAR (extrapolated) = 0.688 W/kg

SAR(1 g) = 0.288 W/kg; SAR(10 g) = 0.186 W/Kg

Maximum value of SAR (measured) = 0.521 W/kg



0 dB = 0.521 W/kg

LTE Band 66_20MHz_QPSK_1RB_0Offset_Bottom Side_10mm_Ch132322_Ant 3

Communication System: UID 0, LTE (0); Frequency: 1745 MHz; Duty Cycle: 1:1

Medium: HSL_1800 Medium parameters used: $f = 1745$ MHz; $\sigma = 1.382$ S/m; $\epsilon_r = 41.164$; $\rho = 1000$ kg/m³

Ambient Temperature : 23.2 °C; Liquid Temperature : 22.1 °C

DASY5 Configuration:

- Probe: EX3DV4 - SN7608; ConvF(8.4, 8.4, 8.4) @ 1745 MHz; Calibrated: 2023.3.15
- Sensor-Surface: 2mm (Mechanical Surface Detection)
- Electronics: DAE4 Sn480; Calibrated: 2022.6.22
- Phantom: SAM 2; Type: QD000P40CC; Serial: TP:1464
- Measurement SW: DASY52, Version 52.10 (4); SEMCAD X Version 14.6.14 (7501)

Ch132322/Area Scan (41x71x1): Interpolated grid: dx=1.500 mm, dy=1.500 mm

Maximum value of SAR (interpolated) = 0.832 W/kg

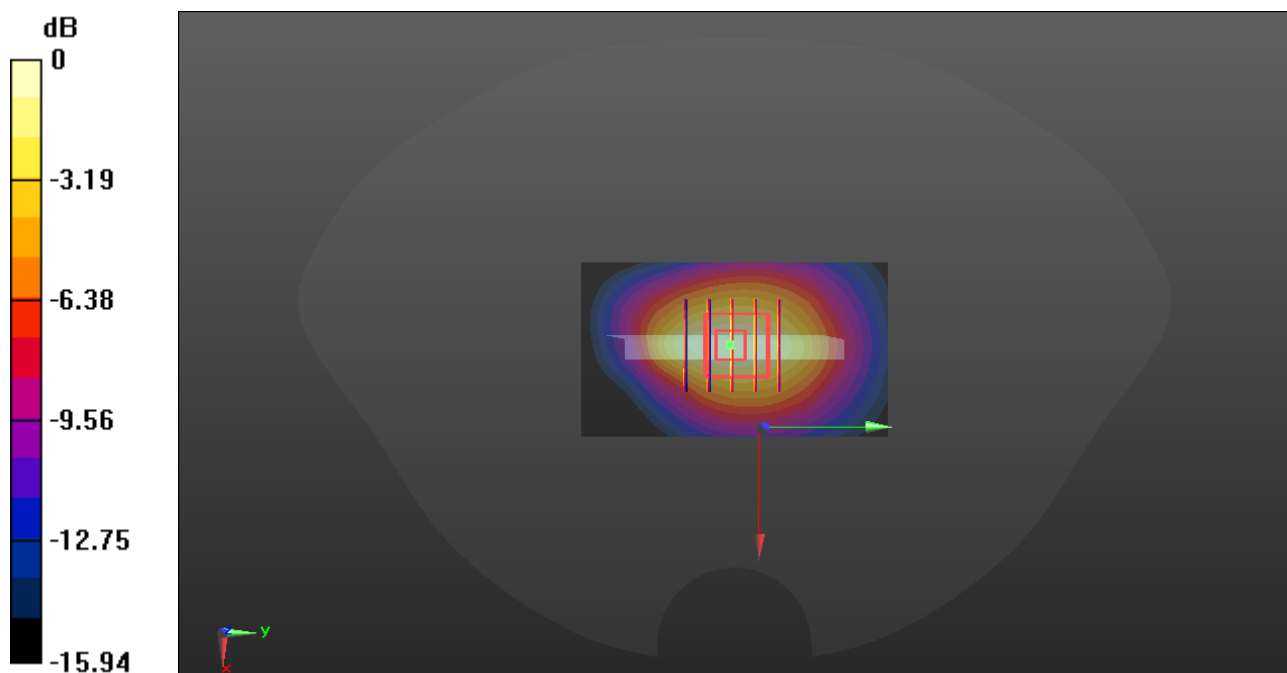
Ch132322/Zoom Scan (5x5x7)/Cube 0: Measurement grid: dx=8mm, dy=8mm, dz=5mm

Reference Value = 21.29 V/m; Power Drift = 0.14 dB

Peak SAR (extrapolated) = 0.951 W/kg

SAR(1 g) = 0.593 W/kg; SAR(10 g) = 0.354 W/kg

Maximum value of SAR (measured) = 0.782 W/kg



0 dB = 0.782 W/kg

WLAN 2.4GHz_802.11b 1Mbps_Back Side_10mm_Ch11

Communication System: UID 0, WLAN 2.4GHz 802.11b (0); Frequency: 2462 MHz; Duty Cycle: 1:1.005
Medium: HSL_2450 Medium parameters used: $f = 2462$ MHz; $\sigma = 1.826$ S/m; $\epsilon_r = 38.806$; $\rho = 1000$ kg/m³
Ambient Temperature : 23.2 °C; Liquid Temperature : 22.2 °C

DASY5 Configuration:

- Probe: EX3DV4 - SN7608; ConvF(7.6, 7.6, 7.6) @ 2462 MHz; Calibrated: 2023.3.15
- Sensor-Surface: 2mm (Mechanical Surface Detection)
- Electronics: DAE4 Sn480; Calibrated: 2022.6.22
- Phantom: SAM 2; Type: QD000P40CC; Serial: TP:1464
- Measurement SW: DASY52, Version 52.10 (4); SEMCAD X Version 14.6.14 (7501)

Ch11/Area Scan (91x101x1): Interpolated grid: dx=1.200 mm, dy=1.200 mm

Maximum value of SAR (interpolated) = 0.252 W/kg

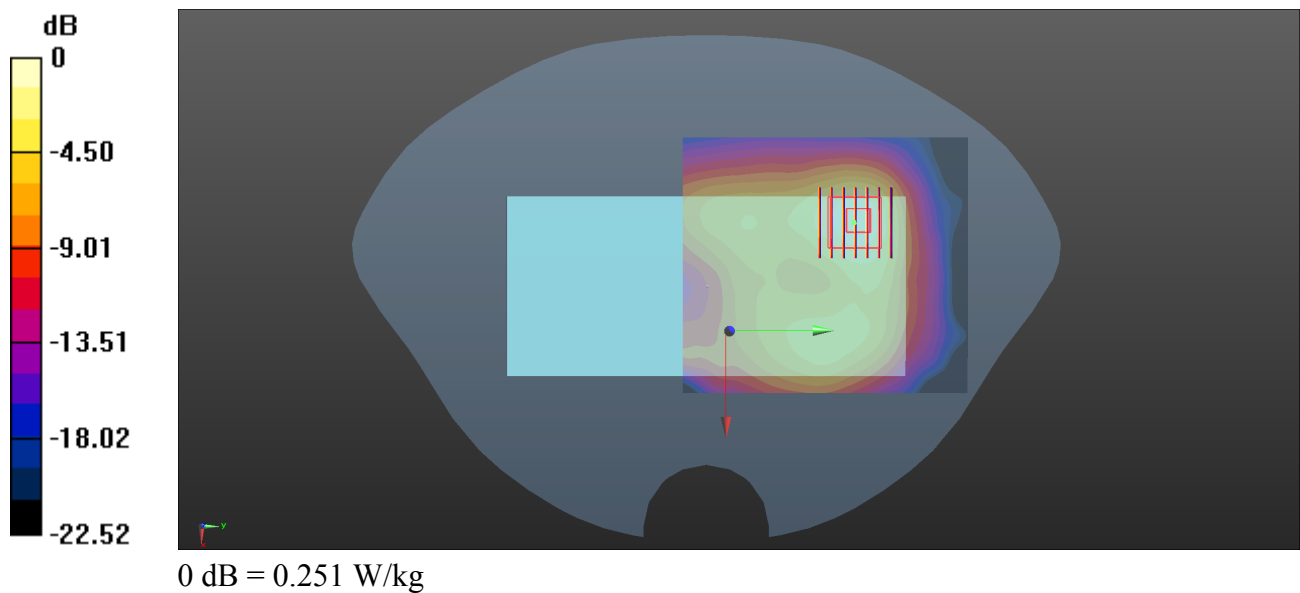
Ch11/Zoom Scan (7x7x7)/Cube 0: Measurement grid: dx=5mm, dy=5mm, dz=5mm

Reference Value = 2.485 V/m; Power Drift = 0.02 dB

Peak SAR (extrapolated) = 0.355 W/kg

SAR(1 g) = 0.171 W/kg; SAR(10 g) = 0.084 W/kg

Maximum value of SAR (measured) = 0.251 W/kg



WLAN 2.4GHz_802.11b 1Mbps_Top Side_10mm_Ch11

Communication System: UID 0, WLAN 2.4GHz 802.11b (0); Frequency: 2462 MHz; Duty Cycle: 1:1.005
Medium: HSL_2450 Medium parameters used: $f = 2462$ MHz; $\sigma = 1.826$ S/m; $\epsilon_r = 38.806$; $\rho = 1000$ kg/m³
Ambient Temperature : 23.2 °C; Liquid Temperature : 22.2 °C

DASY5 Configuration:

- Probe: EX3DV4 - SN7608; ConvF(7.6, 7.6, 7.6) @ 2462 MHz; Calibrated: 2023.3.15
- Sensor-Surface: 2mm (Mechanical Surface Detection)
- Electronics: DAE4 Sn480; Calibrated: 2022.6.22
- Phantom: SAM 2; Type: QD000P40CC; Serial: TP:1464
- Measurement SW: DASY52, Version 52.10 (4); SEMCAD X Version 14.6.14 (7501)

Ch11/Area Scan (51x101x1): Interpolated grid: dx=1.200 mm, dy=1.200 mm

Maximum value of SAR (interpolated) = 0.308 W/kg

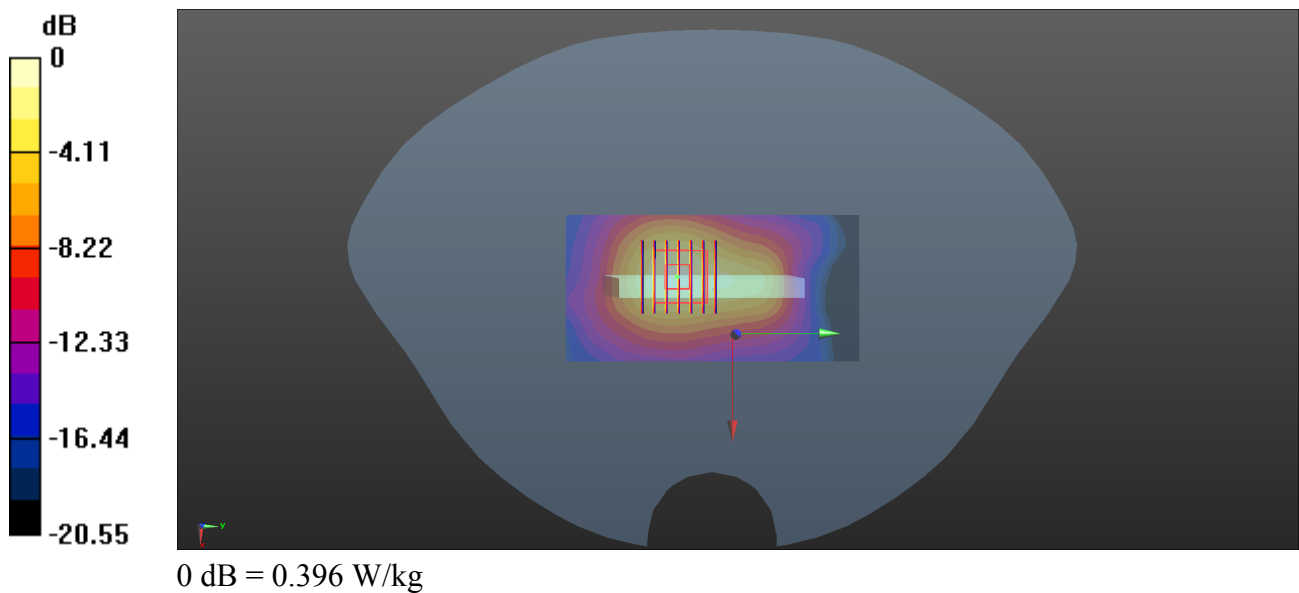
Ch11/Zoom Scan (7x7x7)/Cube 0: Measurement grid: dx=5mm, dy=5mm, dz=5mm

Reference Value = 10.24 V/m; Power Drift = 0.09 dB

Peak SAR (extrapolated) = 0.524 W/kg

SAR(1 g) = 0.271 W/kg; SAR(10 g) = 0.138 W/kg

Maximum value of SAR (measured) = 0.396 W/kg



WLAN 5.2GHz_802.11ac-VHT20 MCS0_Back Side_10mm_Ch48

Communication System: UID 0, WLAN 5GHz (0); Frequency: 5240 MHz; Duty Cycle: 1:1.05

Medium: HSL_5250 Medium parameters used: $f = 5240$ MHz; $\sigma = 4.685$ S/m; $\epsilon_r = 36.07$; $\rho = 1000$ kg/m³

Ambient Temperature : 23.2 °C; Liquid Temperature : 22.3 °C

DASY5 Configuration:

- Probe: EX3DV4 - SN7608; ConvF(5.35, 5.35, 5.35) @ 5240 MHz; Calibrated: 2023.3.15
- Sensor-Surface: 2mm (Mechanical Surface Detection)
- Electronics: DAE4 Sn480; Calibrated: 2022.6.22
- Phantom: SAM 2; Type: QD000P40CC; Serial: TP:1464
- Measurement SW: DASY52, Version 52.10 (4); SEMCAD X Version 14.6.14 (7501)

Ch48/Area Scan (101x101x1): Interpolated grid: dx=1.000 mm, dy=1.000 mm

Maximum value of SAR (interpolated) = 0.434 W/kg

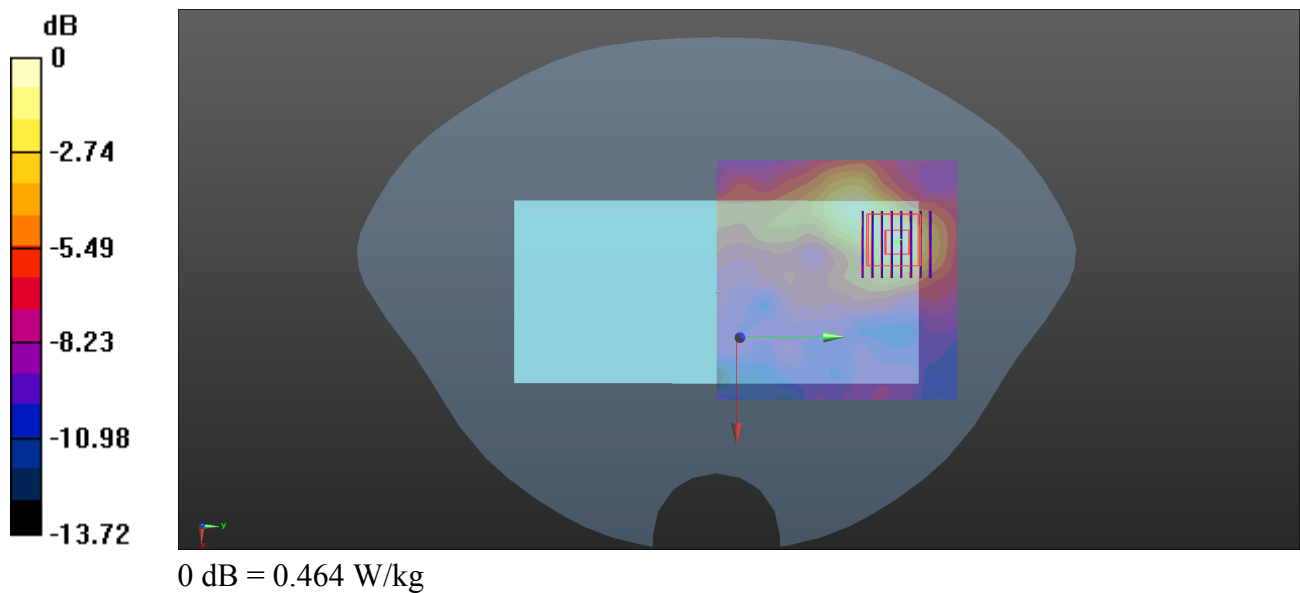
Ch48/Zoom Scan (8x8x15)/Cube 0: Measurement grid: dx=4mm, dy=4mm, dz=2mm

Reference Value = 3.507 V/m; Power Drift = 0.04 dB

Peak SAR (extrapolated) = 0.972 W/kg

SAR(1 g) = 0.271 W/kg; SAR(10 g) = 0.129 W/kg

Maximum value of SAR (measured) = 0.464 W/kg



WLAN 5.2GHz_802.11ac-VHT20 MCS0_Top Side_10mm_Ch36

Communication System: UID 0, WLAN 5GHz (0); Frequency: 5180 MHz; Duty Cycle: 1:1.05

Medium: HSL_5250 Medium parameters used: $f = 5180$ MHz; $\sigma = 4.621$ S/m; $\epsilon_r = 36.166$; $\rho = 1000$ kg/m³

Ambient Temperature : 23.2 °C; Liquid Temperature : 22.3 °C

DASY5 Configuration:

- Probe: EX3DV4 - SN7608; ConvF(5.35, 5.35, 5.35) @ 5240 MHz; Calibrated: 2023.3.15
- Sensor-Surface: 2mm (Mechanical Surface Detection)
- Electronics: DAE4 Sn480; Calibrated: 2022.6.22
- Phantom: SAM 2; Type: QD000P40CC; Serial: TP:1464
- Measurement SW: DASY52, Version 52.10 (4); SEMCAD X Version 14.6.14 (7501)

Ch36/Area Scan (41x101x1): Interpolated grid: dx=1.000 mm, dy=1.000 mm

Maximum value of SAR (interpolated) = 1.12 W/kg

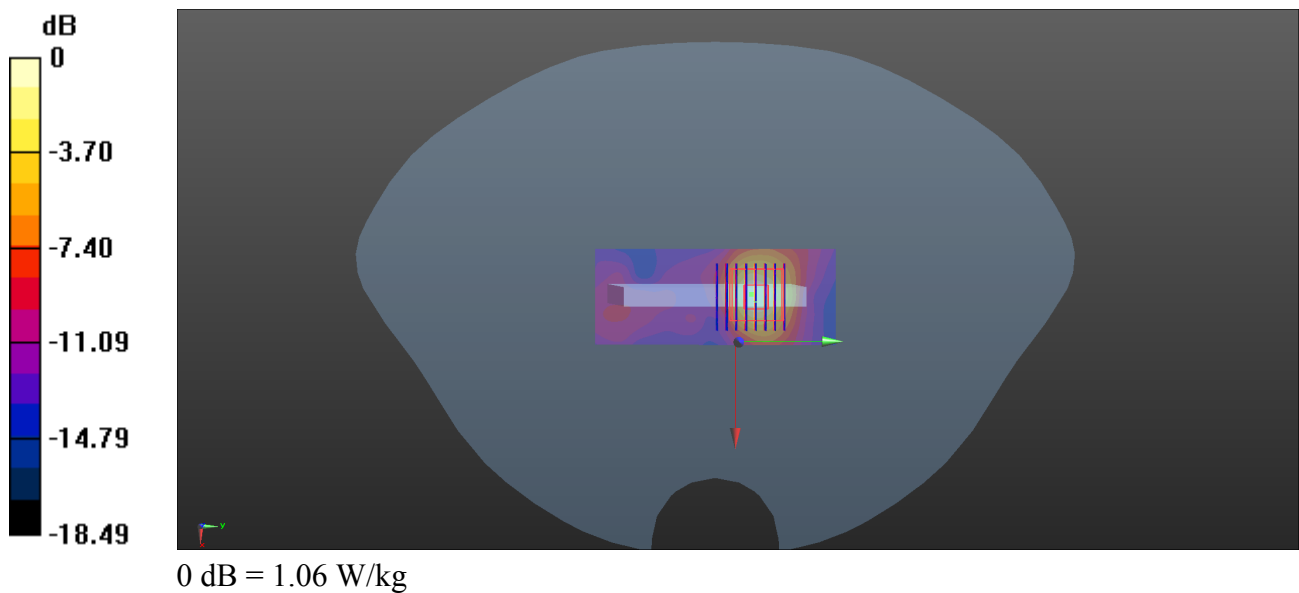
Ch36/Zoom Scan (8x8x15)/Cube 0: Measurement grid: dx=4mm, dy=4mm, dz=2mm

Reference Value = 4.494 V/m; Power Drift = -0.13 dB

Peak SAR (extrapolated) = 2.00 W/kg

SAR(1 g) = 0.581 W/kg; SAR(10 g) = 0.223 W/kg

Maximum value of SAR (measured) = 1.06 W/kg



WLAN 5.3GHz_802.11ac-VHT20 MCS0_Back Side_10mm_Ch60

Communication System: UID 0, WLAN 5GHz (0); Frequency: 5300 MHz; Duty Cycle: 1:1.05

Medium: HSL_5250 Medium parameters used: $f = 5300$ MHz; $\sigma = 4.76$ S/m; $\epsilon_r = 35.987$; $\rho = 1000$ kg/m³

Ambient Temperature : 23.2 °C; Liquid Temperature : 22.3 °C

DASY5 Configuration:

- Probe: EX3DV4 - SN7608; ConvF(5.35, 5.35, 5.35) @ 5300 MHz; Calibrated: 2023.3.15
- Sensor-Surface: 2mm (Mechanical Surface Detection)
- Electronics: DAE4 Sn480; Calibrated: 2022.6.22
- Phantom: SAM 2; Type: QD000P40CC; Serial: TP:1464
- Measurement SW: DASY52, Version 52.10 (4); SEMCAD X Version 14.6.14 (7501)

Ch60/Area Scan (101x101x1): Interpolated grid: dx=1.000 mm, dy=1.000 mm

Maximum value of SAR (interpolated) = 0.429 W/kg

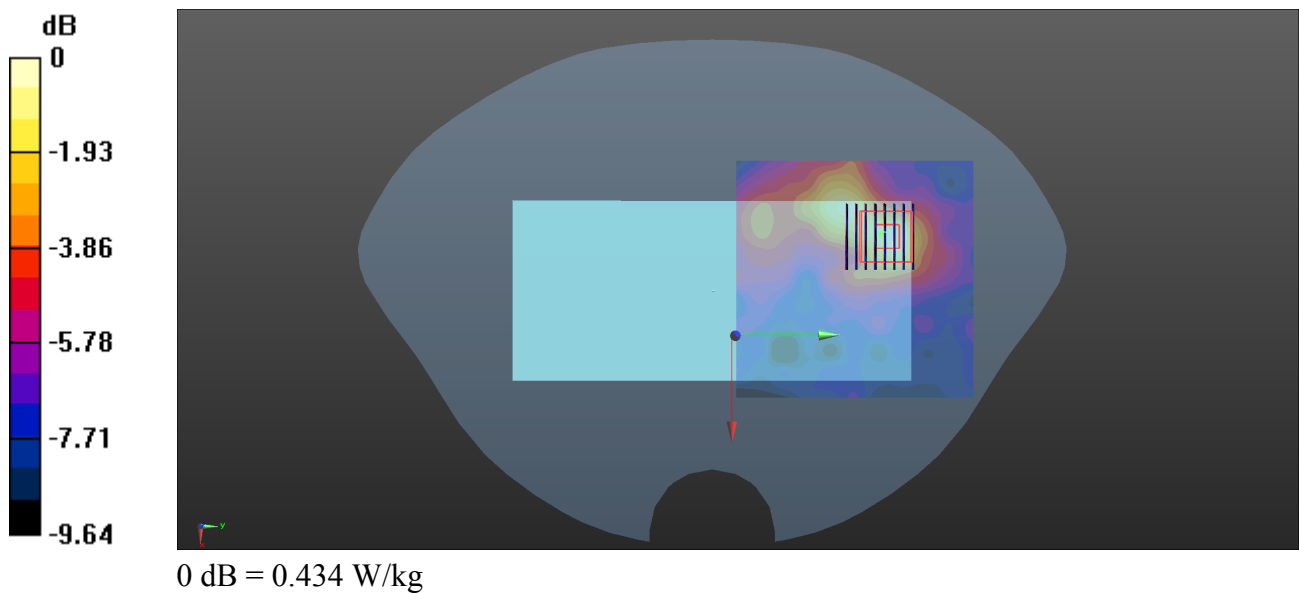
Ch60/Zoom Scan (8x8x15)/Cube 0: Measurement grid: dx=4mm, dy=4mm, dz=2mm

Reference Value = 4.003 V/m; Power Drift = 0.08 dB

Peak SAR (extrapolated) = 0.902 W/kg

SAR(1 g) = 0.254 W/kg; SAR(10 g) = 0.130 W/kg

Maximum value of SAR (measured) = 0.434 W/kg



WLAN 5.5GHz_802.11n-HT20 MCS0_Back Side_10mm_Ch120

Communication System: UID 0, WLAN 5GHz (0); Frequency: 5600 MHz; Duty Cycle: 1:1.051

Medium: HSL_5600 Medium parameters used: $f = 5600$ MHz; $\sigma = 5.125$ S/m; $\epsilon_r = 35.435$; $\rho = 1000$ kg/m³

Ambient Temperature : 23.2 °C; Liquid Temperature : 22.3 °C

DASY5 Configuration:

- Probe: EX3DV4 - SN7608; ConvF(4.8, 4.8, 4.8) @ 5700 MHz; Calibrated: 2023.3.15
- Sensor-Surface: 2mm (Mechanical Surface Detection)
- Electronics: DAE4 Sn480; Calibrated: 2022.6.22
- Phantom: SAM 2; Type: QD000P40CC; Serial: TP:1464
- Measurement SW: DASY52, Version 52.10 (4); SEMCAD X Version 14.6.14 (7501)

Ch120/Area Scan (101x101x1): Interpolated grid: dx=1.000 mm, dy=1.000 mm

Maximum value of SAR (interpolated) = 0.564 W/kg

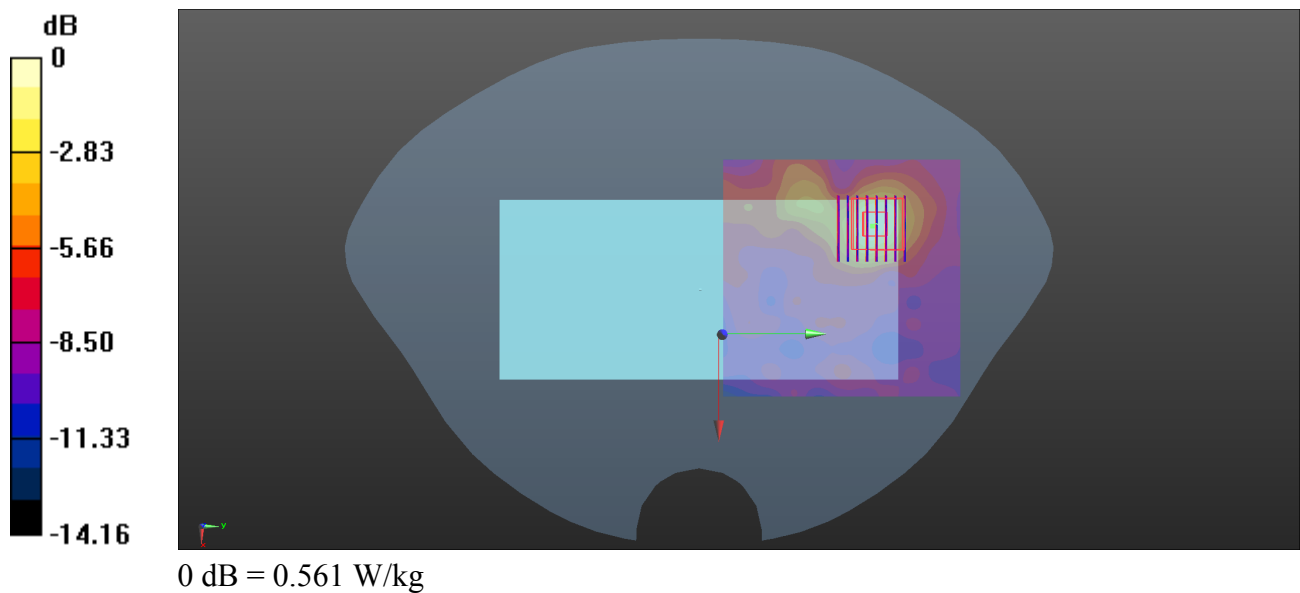
Ch120/Zoom Scan (8x8x15)/Cube 0: Measurement grid: dx=4mm, dy=4mm, dz=2mm

Reference Value = 2.562 V/m; Power Drift = 0.09 dB

Peak SAR (extrapolated) = 1.29 W/kg

SAR(1 g) = 0.321 W/kg; SAR(10 g) = 0.150 W/kg

Maximum value of SAR (measured) = 0.561 W/kg



WLAN 5.8GHz_802.11ac-VHT20 MCS0_Back Side_10mm_Ch149

Communication System: UID 0, WLAN 5GHz (0); Frequency: 5745 MHz; Duty Cycle: 1:1.05

Medium: HSL_5750 Medium parameters used: $f = 5745$ MHz; $\sigma = 5.291$ S/m; $\epsilon_r = 35.168$; $\rho = 1000$ kg/m³

Ambient Temperature : 23.2 °C; Liquid Temperature : 22.3 °C

DASY5 Configuration:

- Probe: EX3DV4 - SN7608; ConvF(4.87, 4.87, 4.87) @ 5785 MHz; Calibrated: 2023.3.15
- Sensor-Surface: 2mm (Mechanical Surface Detection)
- Electronics: DAE4 Sn480; Calibrated: 2022.6.22
- Phantom: SAM 2; Type: QD000P40CC; Serial: TP:1464
- Measurement SW: DASY52, Version 52.10 (4); SEMCAD X Version 14.6.14 (7501)

Ch149/Area Scan (101x101x1): Interpolated grid: dx=1.000 mm, dy=1.000 mm

Maximum value of SAR (interpolated) = 0.642 W/kg

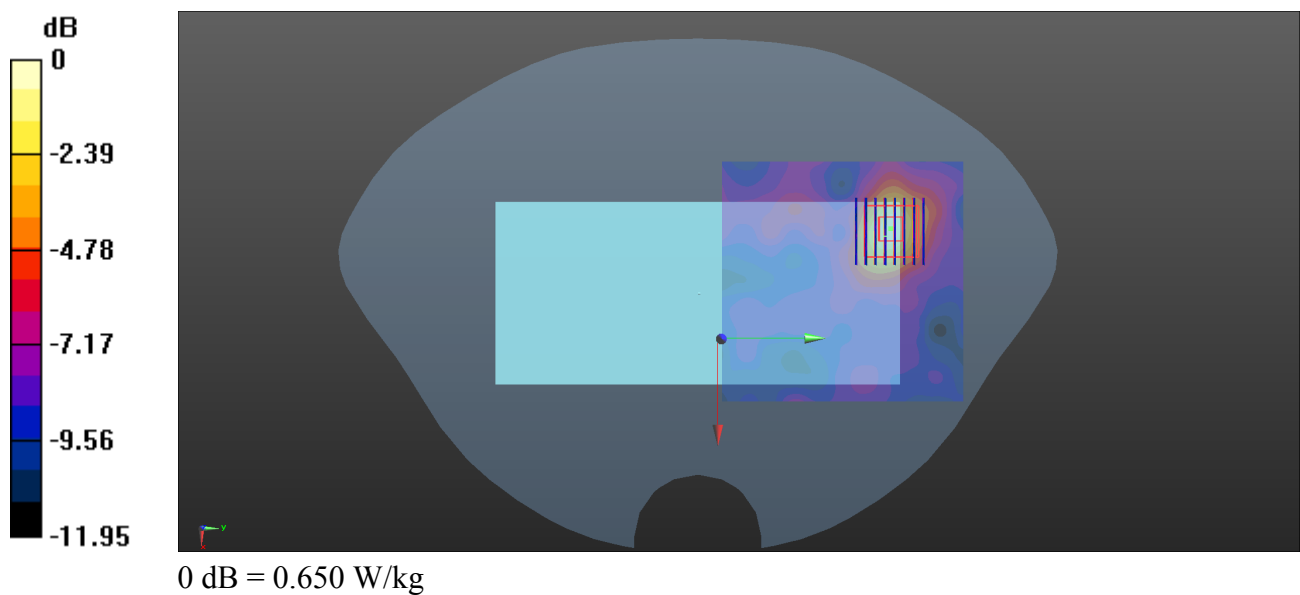
Ch149/Zoom Scan (8x8x15)/Cube 0: Measurement grid: dx=4mm, dy=4mm, dz=2mm

Reference Value = 3.907 V/m; Power Drift = -0.14 dB

Peak SAR (extrapolated) = 1.66 W/kg

SAR(1 g) = 0.393 W/kg; SAR(10 g) = 0.180 W/kg

Maximum value of SAR (measured) = 0.650 W/kg



WLAN 5.8GHz_802.11ac-VHT20 MCS0_Top Side_10mm_Ch157

Communication System: UID 0, WLAN 5GHz (0); Frequency: 5785 MHz; Duty Cycle: 1:1.05

Medium: HSL_5750 Medium parameters used: $f = 5785$ MHz; $\sigma = 5.333$ S/m; $\epsilon_r = 35.097$; $\rho = 1000$ kg/m³

Ambient Temperature : 23.2 °C; Liquid Temperature : 22.3 °C

DASY5 Configuration:

- Probe: EX3DV4 - SN7608; ConvF(4.87, 4.87, 4.87) @ 5785 MHz; Calibrated: 2023.3.15
- Sensor-Surface: 2mm (Mechanical Surface Detection)
- Electronics: DAE4 Sn480; Calibrated: 2022.6.22
- Phantom: SAM 2; Type: QD000P40CC; Serial: TP:1464
- Measurement SW: DASY52, Version 52.10 (4); SEMCAD X Version 14.6.14 (7501)

Ch157/Area Scan (41x101x1): Interpolated grid: dx=1.000 mm, dy=1.000 mm

Maximum value of SAR (interpolated) = 1.11 W/kg

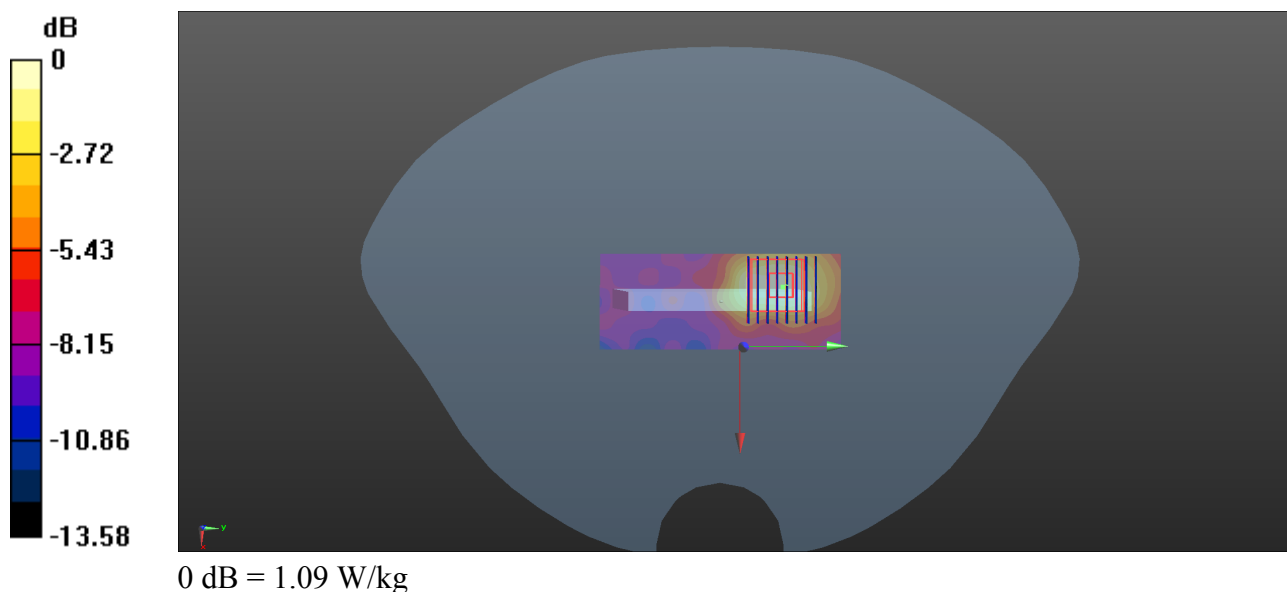
Ch157/Zoom Scan (8x8x15)/Cube 0: Measurement grid: dx=4mm, dy=4mm, dz=2mm

Reference Value = 6.167 V/m; Power Drift = 0.14 dB

Peak SAR (extrapolated) = 2.43 W/kg

SAR(1 g) = 0.623 W/kg; SAR(10 g) = 0.287 W/kg

Maximum value of SAR (measured) = 1.09 W/kg



Bluetooth_DH5_Front Side_10mm_Ch0

Communication System: UID 0, Bluetooth (0); Frequency: 2402 MHz; Duty Cycle: 1:1.073

Medium: HSL_2450 Medium parameters used: $f = 2402$ MHz; $\sigma = 1.749$ S/m; $\epsilon_r = 38.922$; $\rho = 1000$ kg/m³

Ambient Temperature : 23.2 °C; Liquid Temperature : 22.2 °C

DASY5 Configuration:

- Probe: EX3DV4 - SN7608; ConvF(7.6, 7.6, 7.6) @ 2402 MHz; Calibrated: 2023.3.15
- Sensor-Surface: 2mm (Mechanical Surface Detection)
- Electronics: DAE4 Sn480; Calibrated: 2022.6.22
- Phantom: SAM 2; Type: QD000P40CC; Serial: TP:1464
- Measurement SW: DASY52, Version 52.10 (4); SEMCAD X Version 14.6.14 (7501)

Ch0/Area Scan (81x91x1): Interpolated grid: dx=1.200 mm, dy=1.200 mm

Maximum value of SAR (interpolated) = 0.0616 W/kg

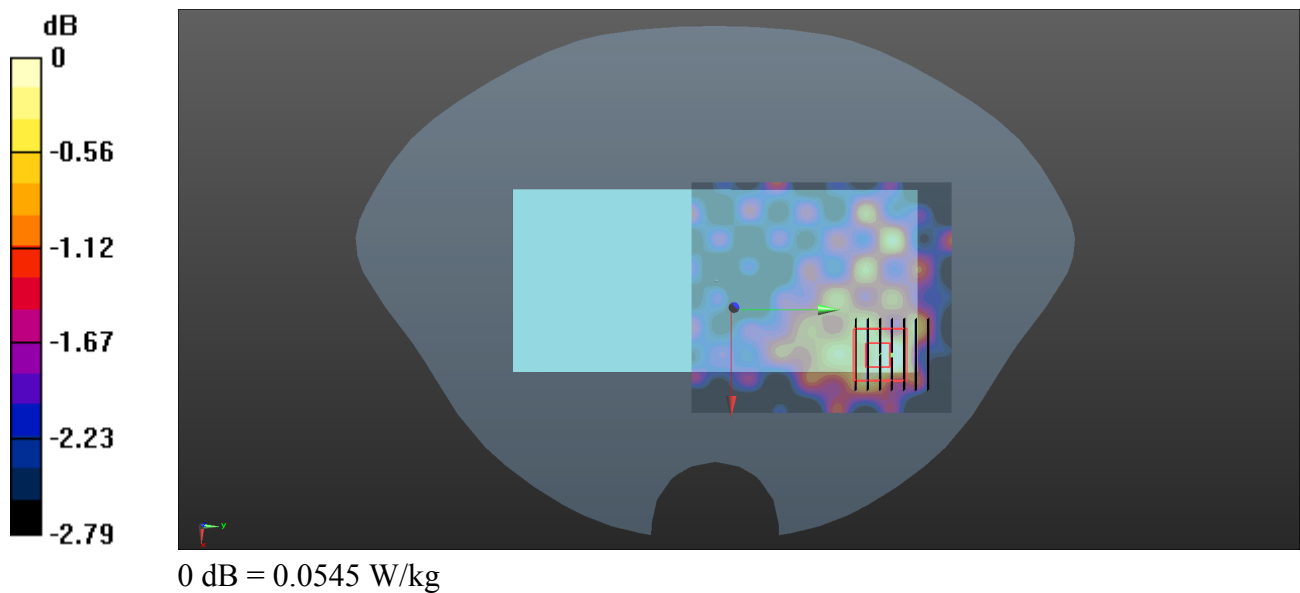
Ch0/Zoom Scan (7x7x7)/Cube 0: Measurement grid: dx=5mm, dy=5mm, dz=5mm

Reference Value = 3.341 V/m; Power Drift = -0.07 dB

Peak SAR (extrapolated) = 0.0740 W/kg

SAR(1 g) = 0.039 W/kg; SAR(10 g) = 0.027 W/kg

Maximum value of SAR (measured) = 0.0545 W/kg



Bluetooth_DH5_Top Side_10mm_Ch0

Communication System: UID 0, Bluetooth (0); Frequency: 2402 MHz; Duty Cycle: 1:1.073

Medium: HSL_2450 Medium parameters used: $f = 2402$ MHz; $\sigma = 1.749$ S/m; $\epsilon_r = 38.922$; $\rho = 1000$ kg/m³

Ambient Temperature : 23.2 °C; Liquid Temperature : 22.2 °C

DASY5 Configuration:

- Probe: EX3DV4 - SN7608; ConvF(7.6, 7.6, 7.6) @ 2402 MHz; Calibrated: 2023.3.15
- Sensor-Surface: 2mm (Mechanical Surface Detection)
- Electronics: DAE4 Sn480; Calibrated: 2022.6.22
- Phantom: SAM 2; Type: QD000P40CC; Serial: TP:1464
- Measurement SW: DASY52, Version 52.10 (4); SEMCAD X Version 14.6.14 (7501)

Ch0/Area Scan (41x91x1): Interpolated grid: dx=1.200 mm, dy=1.200 mm

Maximum value of SAR (interpolated) = 0.0629 W/kg

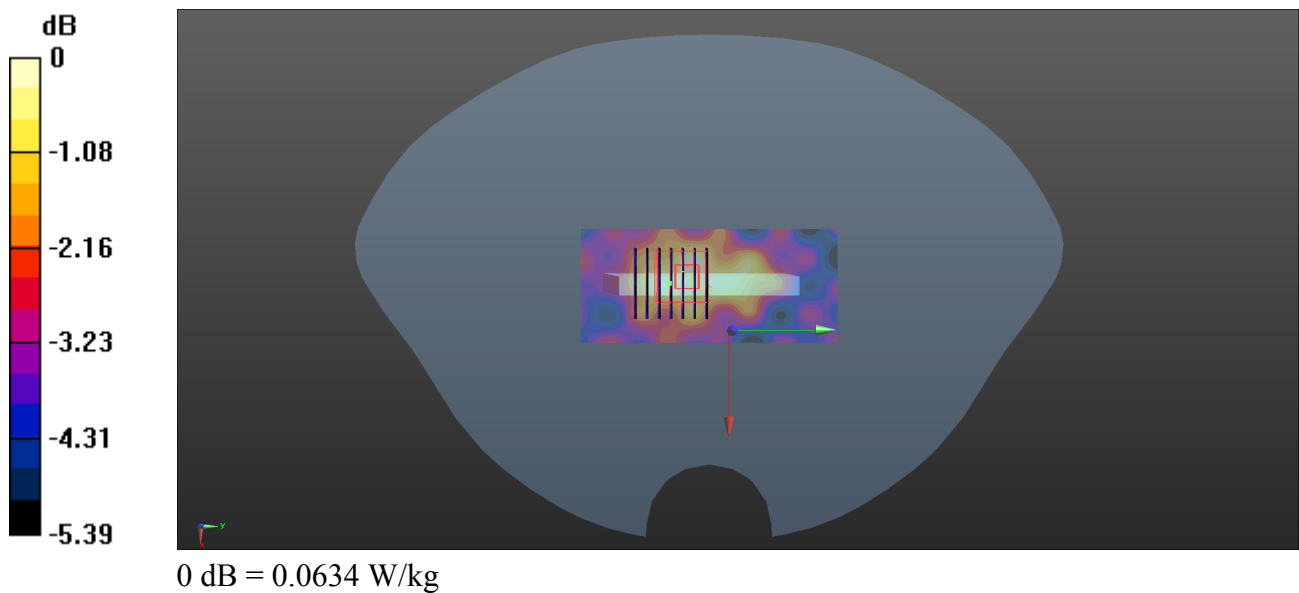
Ch0/Zoom Scan (7x7x7)/Cube 0: Measurement grid: dx=5mm, dy=5mm, dz=5mm

Reference Value = 5.484 V/m; Power Drift = -0.01 dB

Peak SAR (extrapolated) = 0.0860 W/kg

SAR(1 g) = 0.046 W/kg; SAR(10 g) = 0.032 W/kg

Maximum value of SAR (measured) = 0.0634 W/kg



WLAN 5.3GHz_802.11ac-VHT20 MCS0_Back Side_0mm_Ch60

Communication System: UID 0, WLAN 5GHz (0); Frequency: 5300 MHz; Duty Cycle: 1:1.05

Medium: HSL_5250 Medium parameters used: $f = 5300$ MHz; $\sigma = 4.76$ S/m; $\epsilon_r = 35.987$; $\rho = 1000$ kg/m³

Ambient Temperature : 23.2 °C; Liquid Temperature : 22.3 °C

DASY5 Configuration:

- Probe: EX3DV4 - SN7608; ConvF(5.35, 5.35, 5.35) @ 5300 MHz; Calibrated: 2023.3.15
- Sensor-Surface: 2mm (Mechanical Surface Detection)
- Electronics: DAE4 Sn480; Calibrated: 2022.6.22
- Phantom: SAM 2; Type: QD000P40CC; Serial: TP:1464
- Measurement SW: DASY52, Version 52.10 (4); SEMCAD X Version 14.6.14 (7501)

Ch60/Area Scan (101x101x1): Interpolated grid: dx=1.000 mm, dy=1.000 mm

Maximum value of SAR (interpolated) = 3.72 W/kg

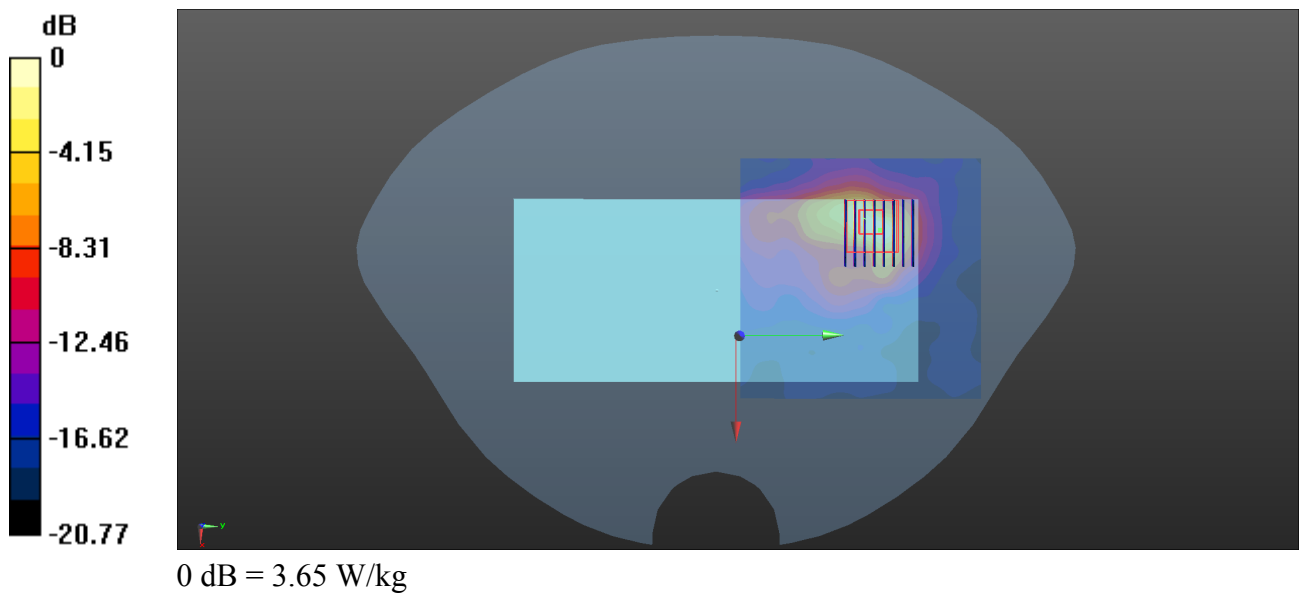
Ch60/Zoom Scan (8x8x15)/Cube 0: Measurement grid: dx=4mm, dy=4mm, dz=2mm

Reference Value = 4.014 V/m; Power Drift = 0.09 dB

Peak SAR (extrapolated) = 8.37 W/kg

SAR(1 g) = 1.83 W/kg; SAR(10 g) = 0.578 W/kg

Maximum value of SAR (measured) = 3.65 W/kg



WLAN 5.5GHz_802.11n-HT20 MCS0_Back Side_0mm_Ch120

Communication System: UID 0, WLAN 5GHz (0); Frequency: 5600 MHz; Duty Cycle: 1:1.051

Medium: HSL_5600 Medium parameters used: $f = 5600$ MHz; $\sigma = 5.125$ S/m; $\epsilon_r = 35.435$; $\rho = 1000$ kg/m³

Ambient Temperature : 23.2 °C; Liquid Temperature : 22.3 °C

DASY5 Configuration:

- Probe: EX3DV4 - SN7608; ConvF(4.8, 4.8, 4.8) @ 5600 MHz; Calibrated: 2023.3.15
- Sensor-Surface: 2mm (Mechanical Surface Detection)
- Electronics: DAE4 Sn480; Calibrated: 2022.6.22
- Phantom: SAM 2; Type: QD000P40CC; Serial: TP:1464
- Measurement SW: DASY52, Version 52.10 (4); SEMCAD X Version 14.6.14 (7501)

Ch120/Area Scan (101x101x1): Interpolated grid: dx=1.000 mm, dy=1.000 mm

Maximum value of SAR (interpolated) = 3.77 W/kg

Ch120/Zoom Scan (8x8x15)/Cube 0: Measurement grid: dx=4mm, dy=4mm, dz=2mm

Reference Value = 2.181 V/m; Power Drift = 0.02 dB

Peak SAR (extrapolated) = 12.8 W/kg

SAR(1 g) = 1.99 W/kg; SAR(10 g) = 0.542 W/kg

Maximum value of SAR (measured) = 4.56 W/kg

