



REPORT No.: SZ22070173S01

## Annex D Plots of Maximum SAR Test Results

## GSM850\_GPRS(2 TX slots)\_Right Cheek\_Ch189

Communication System: UID 0, GSM850(class 10) (0); Frequency: 836.4 MHz; Duty Cycle: 1:4.15  
Medium: HSL\_900 Medium parameters used:  $f = 836.4$  MHz;  $\sigma = 0.958$  S/m;  $\epsilon_r = 40.843$ ;  $\rho = 1000$  kg/m<sup>3</sup>

Ambient Temperature : 23.2 °C; Liquid Temperature : 22.2 °C

### DASY5 Configuration:

- Probe: EX3DV4 - SN7608; ConvF(9.81, 9.81, 9.81) @ 836.4 MHz; Calibrated: 2022.01.12
- Sensor-Surface: 2mm (Mechanical Surface Detection)
- Electronics: DAE4 Sn1643; Calibrated: 2021.12.30
- Phantom: Twin-SAM; Type: QD 000 P41 Ax; Serial: 2020
- Measurement SW: DASY52, Version 52.10 (4); SEMCAD X Version 14.6.14 (7483)

**Ch189/Area Scan (71x91x1):** Interpolated grid: dx=1.500 mm, dy=1.500 mm

Maximum value of SAR (interpolated) = 0.364 W/kg

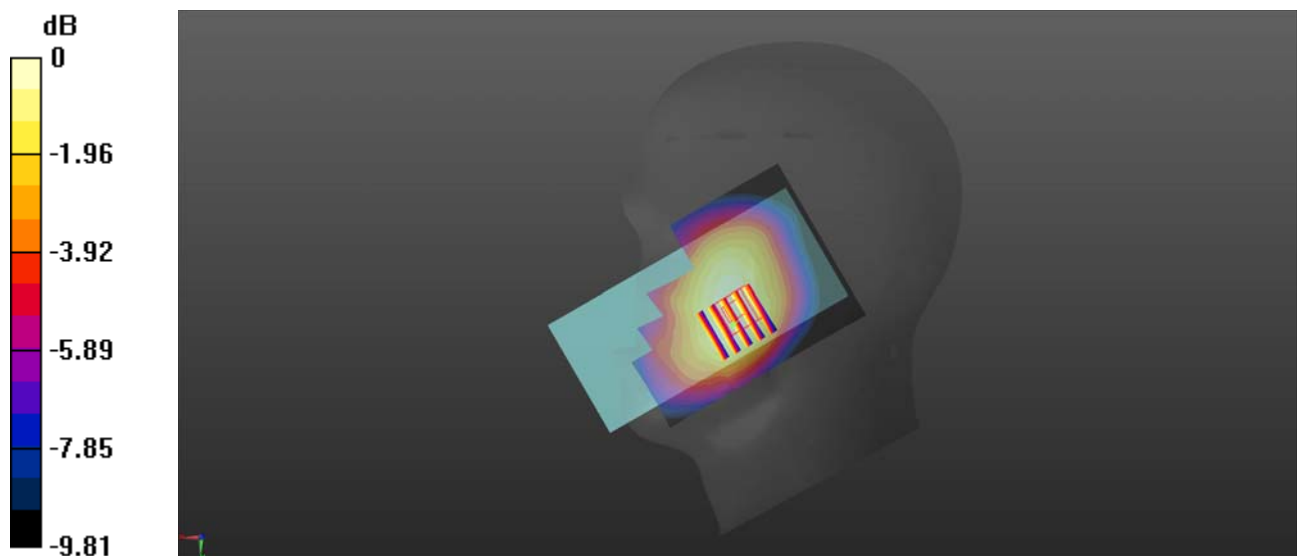
**Ch189/Zoom Scan (5x5x7)/Cube 0:** Measurement grid: dx=8mm, dy=8mm, dz=5mm

Reference Value = 5.362 V/m; Power Drift = 0.03 dB

Peak SAR (extrapolated) = 0.409 W/kg

**SAR(1 g) = 0.315 W/kg; SAR(10 g) = 0.237 W/kg**

Maximum value of SAR (measured) = 0.362 W/kg



0 dB = 0.362 W/kg

## GSM1900\_GPRS(2 TX slots)\_Right Cheek\_Ch661

Communication System: UID 0, GSM1900(Class 10) (0); Frequency: 1880 MHz; Duty Cycle: 1:4.15  
Medium: HSL\_2000 Medium parameters used:  $f = 1880$  MHz;  $\sigma = 1.321$  S/m;  $\epsilon_r = 39.882$ ;  $\rho = 1000$  kg/m<sup>3</sup>

Ambient Temperature : 23.2 °C; Liquid Temperature : 22.3 °C

### DASY5 Configuration:

- Probe: EX3DV4 - SN7608; ConvF(7.99, 7.99, 7.99) @ 1880 MHz; Calibrated: 2022.01.12
- Sensor-Surface: 2mm (Mechanical Surface Detection)
- Electronics: DAE4 Sn1643; Calibrated: 2021.12.30
- Phantom: Twin-SAM; Type: QD 000 P41 Ax; Serial: 2020
- Measurement SW: DASY52, Version 52.10 (4); SEMCAD X Version 14.6.14 (7483)

**Ch661/Area Scan (71x91x1):** Interpolated grid: dx=1.500 mm, dy=1.500 mm

Maximum value of SAR (interpolated) = 0.107 W/kg

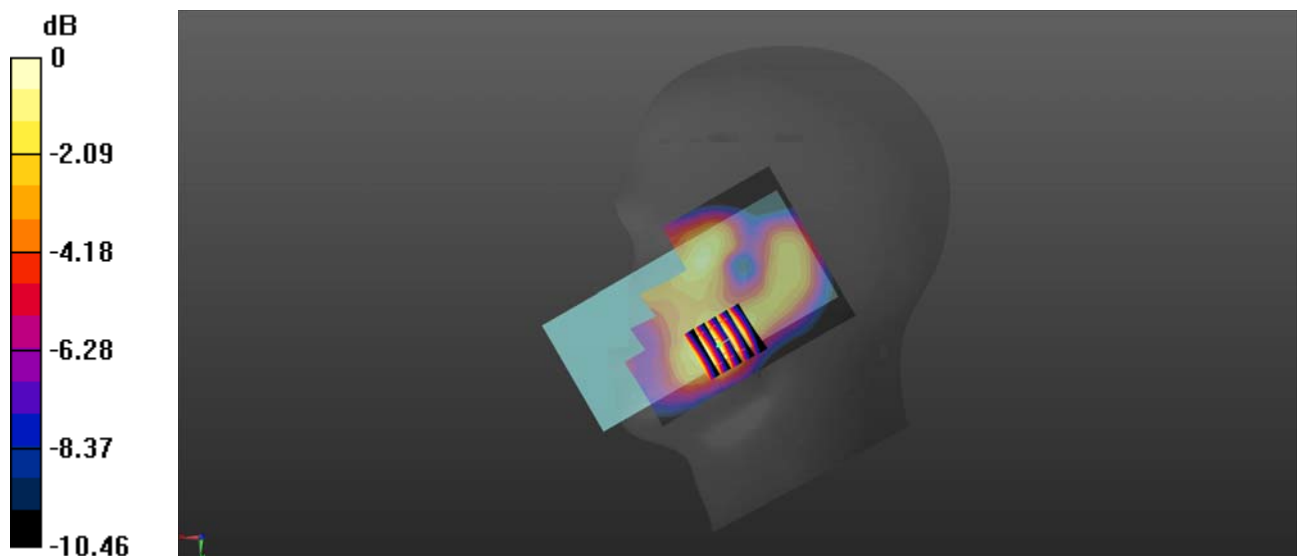
**Ch661/Zoom Scan (5x5x7)/Cube 0:** Measurement grid: dx=8mm, dy=8mm, dz=5mm

Reference Value = 5.023 V/m; Power Drift = 0.01 dB

Peak SAR (extrapolated) = 0.131 W/kg

**SAR(1 g) = 0.085 W/kg; SAR(10 g) = 0.053 W/kg**

Maximum value of SAR (measured) = 0.108 W/kg



0 dB = 0.108 W/kg

## WCDMA Band II\_RMC 12.2Kbps\_Right Cheek\_Ch9400

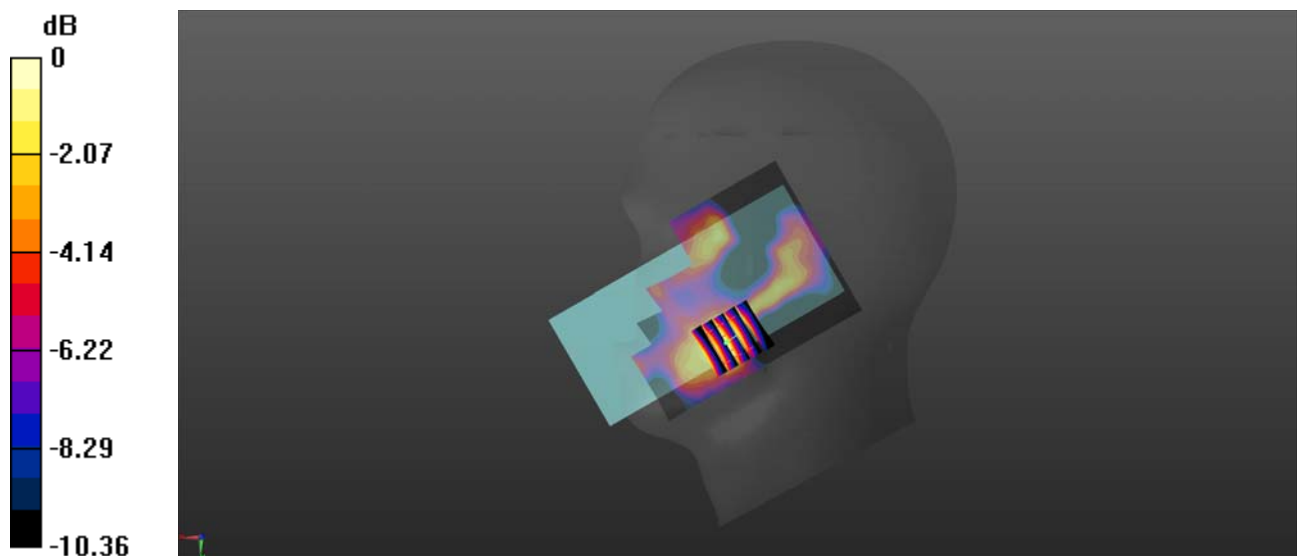
Communication System: UID 0, UMTS-FDD (0); Frequency: 1880 MHz; Duty Cycle: 1:1  
Medium: HSL\_2000 Medium parameters used:  $f = 1880$  MHz;  $\sigma = 1.321$  S/m;  $\epsilon_r = 39.882$ ;  $\rho = 1000$  kg/m<sup>3</sup>  
Ambient Temperature : 23.2 °C; Liquid Temperature : 22.3 °C

### DASY5 Configuration:

- Probe: EX3DV4 - SN7608; ConvF(7.99, 7.99, 7.99) @ 1880 MHz; Calibrated: 2022.01.12
- Sensor-Surface: 2mm (Mechanical Surface Detection)
- Electronics: DAE4 Sn1643; Calibrated: 2021.12.30
- Phantom: Twin-SAM; Type: QD 000 P41 Ax; Serial: 2020
- Measurement SW: DASY52, Version 52.10 (4); SEMCAD X Version 14.6.14 (7483)

**Ch9400/Area Scan (71x91x1):** Interpolated grid: dx=1.500 mm, dy=1.500 mm  
Maximum value of SAR (interpolated) = 0.0499 W/kg

**Ch9400/Zoom Scan (5x5x7)/Cube 0:** Measurement grid: dx=8mm, dy=8mm, dz=5mm  
Reference Value = 1.917 V/m; Power Drift = 0.02 dB  
Peak SAR (extrapolated) = 0.0470 W/kg  
**SAR(1 g) = 0.030 W/kg; SAR(10 g) = 0.018 W/kg**  
Maximum value of SAR (measured) = 0.0383 W/kg



0 dB = 0.0383 W/kg

## WCDMA Band IV\_RMC 12.2Kbps\_Right Cheek\_Ch1413

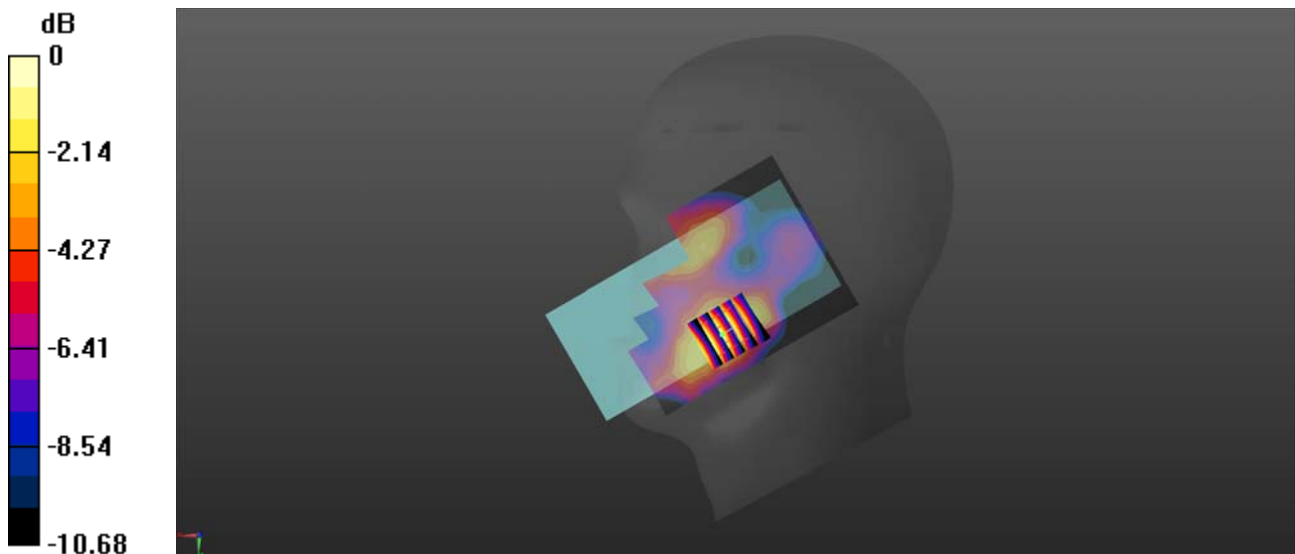
Communication System: UID 0, UMTS-FDD (0); Frequency: 1732.6 MHz; Duty Cycle: 1:1  
Medium: HSL\_1800 Medium parameters used:  $f = 1733$  MHz;  $\sigma = 1.366$  S/m;  $\epsilon_r = 41.367$ ;  $\rho = 1000$  kg/m<sup>3</sup>  
Ambient Temperature : 23.2 °C; Liquid Temperature : 22.2 °C

### DASY5 Configuration:

- Probe: EX3DV4 - SN7608; ConvF(8.26, 8.26, 8.26) @ 1732.6 MHz; Calibrated: 2022.01.12
- Sensor-Surface: 2mm (Mechanical Surface Detection)
- Electronics: DAE4 Sn1643; Calibrated: 2021.12.30
- Phantom: Twin-SAM; Type: QD 000 P41 Ax; Serial: 2020
- Measurement SW: DASY52, Version 52.10 (4); SEMCAD X Version 14.6.14 (7483)

**Ch1413/Area Scan (71x91x1):** Interpolated grid: dx=1.500 mm, dy=1.500 mm  
Maximum value of SAR (interpolated) = 0.0666 W/kg

**Ch1413/Zoom Scan (5x5x7)/Cube 0:** Measurement grid: dx=8mm, dy=8mm, dz=5mm  
Reference Value = 2.535 V/m; Power Drift = 0.03 dB  
Peak SAR (extrapolated) = 0.0800 W/kg  
**SAR(1 g) = 0.052 W/kg; SAR(10 g) = 0.033 W/kg**  
Maximum value of SAR (measured) = 0.0674 W/kg



0 dB = 0.0674 W/kg

## WCDMA Band V\_RMC 12.2Kbps\_Right Cheek\_Ch4182

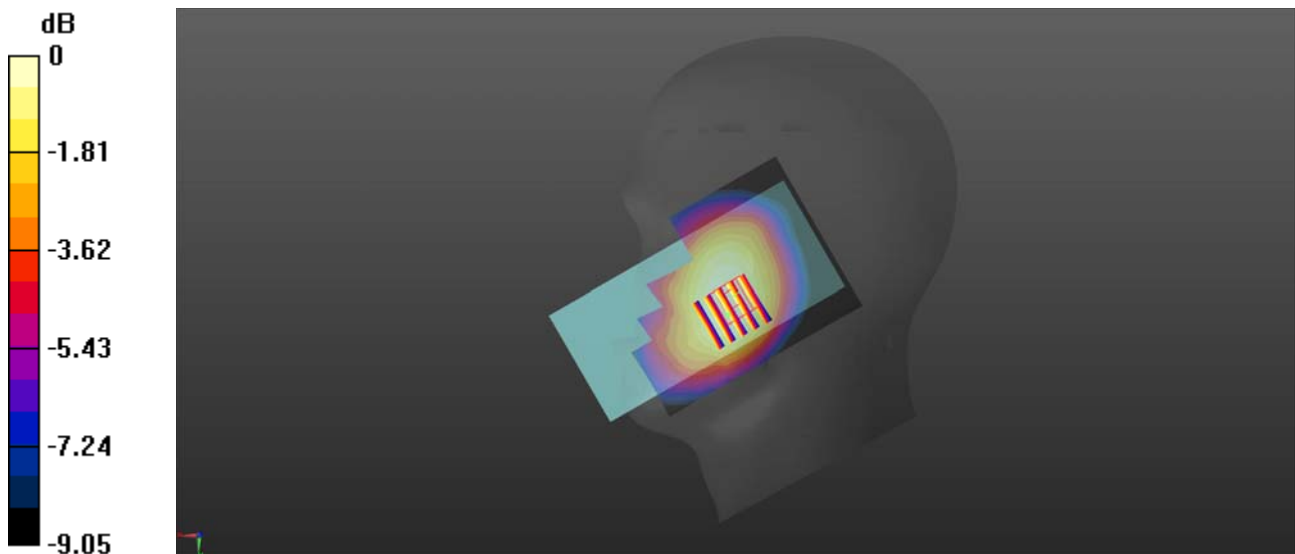
Communication System: UID 0, UMTS-FDD (0); Frequency: 836.4 MHz; Duty Cycle: 1:1  
Medium: HSL\_900 Medium parameters used:  $f = 836.4$  MHz;  $\sigma = 0.958$  S/m;  $\epsilon_r = 40.843$ ;  $\rho = 1000$  kg/m<sup>3</sup>  
Ambient Temperature : 23.2 °C; Liquid Temperature : 22.2 °C

### DASY5 Configuration:

- Probe: EX3DV4 - SN7608; ConvF(9.81, 9.81, 9.81) @ 836.4 MHz; Calibrated: 2022.01.12
- Sensor-Surface: 2mm (Mechanical Surface Detection)
- Electronics: DAE4 Sn1643; Calibrated: 2021.12.30
- Phantom: Twin-SAM; Type: QD 000 P41 Ax; Serial: 2020
- Measurement SW: DASY52, Version 52.10 (4); SEMCAD X Version 14.6.14 (7483)

**Ch4182/Area Scan (71x91x1):** Interpolated grid: dx=1.500 mm, dy=1.500 mm  
Maximum value of SAR (interpolated) = 0.223 W/kg

**Ch4182/Zoom Scan (5x5x7)/Cube 0:** Measurement grid: dx=8mm, dy=8mm, dz=5mm  
Reference Value = 3.313 V/m; Power Drift = 0.08 dB  
Peak SAR (extrapolated) = 0.236 W/kg  
**SAR(1 g) = 0.187 W/kg; SAR(10 g) = 0.144 W/kg**  
Maximum value of SAR (measured) = 0.212 W/kg



0 dB = 0.212 W/kg

## LTE Band 2\_20MHz\_QPSK\_1RB\_0Offset\_Right Cheek\_Ch18900

Communication System: UID 0, LTE (0); Frequency: 1880 MHz; Duty Cycle: 1:1

Medium: HSL\_2000 Medium parameters used:  $f = 1880$  MHz;  $\sigma = 1.321$  S/m;  $\epsilon_r = 39.882$ ;  $\rho = 1000$  kg/m<sup>3</sup>

Ambient Temperature : 23.2 °C; Liquid Temperature : 22.3 °C

DASY5 Configuration:

- Probe: EX3DV4 - SN7608; ConvF(7.99, 7.99, 7.99) @ 1880 MHz; Calibrated: 2022.01.12
- Sensor-Surface: 2mm (Mechanical Surface Detection)
- Electronics: DAE4 Sn1643; Calibrated: 2021.12.30
- Phantom: Twin-SAM; Type: QD 000 P41 Ax; Serial: 2020
- Measurement SW: DASY52, Version 52.10 (4); SEMCAD X Version 14.6.14 (7483)

**Ch18900/Area Scan (71x91x1):** Interpolated grid: dx=1.500 mm, dy=1.500 mm

Maximum value of SAR (interpolated) = 0.0451 W/kg

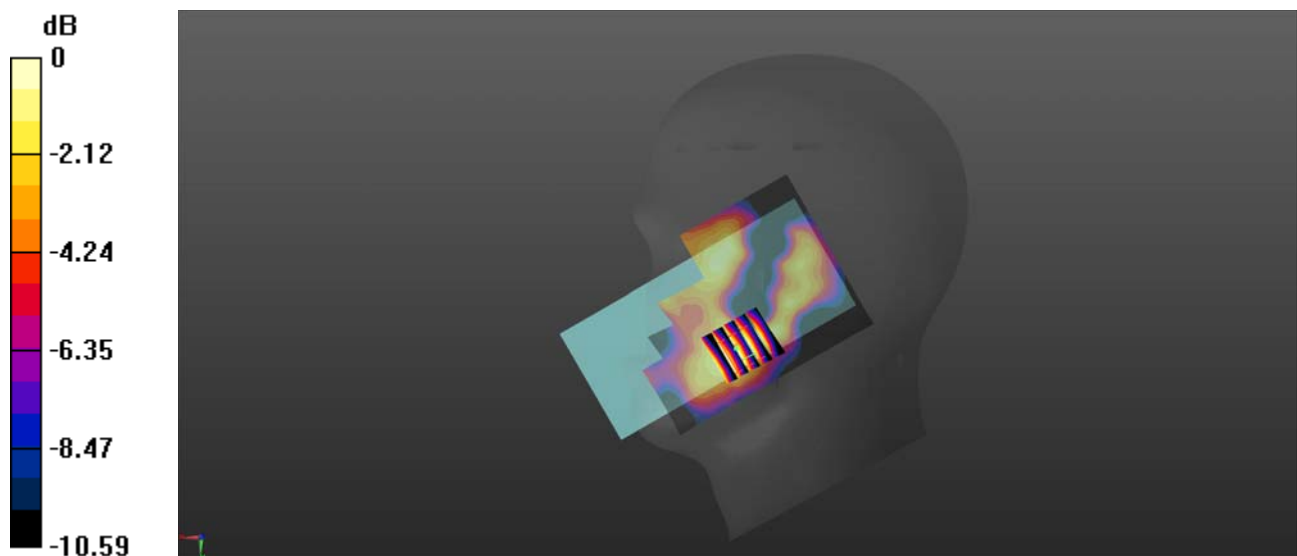
**Ch18900/Zoom Scan (5x5x7)/Cube 0:** Measurement grid: dx=8mm, dy=8mm, dz=5mm

Reference Value = 3.077 V/m; Power Drift = 0.02 dB

Peak SAR (extrapolated) = 0.0500 W/kg

**SAR(1 g) = 0.031 W/kg; SAR(10 g) = 0.019 W/kg**

Maximum value of SAR (measured) = 0.0381 W/kg



0 dB = 0.0381 W/kg

## LTE Band 4\_20MHz\_QPSK\_1RB\_0Offset\_Right Cheek\_Ch20175

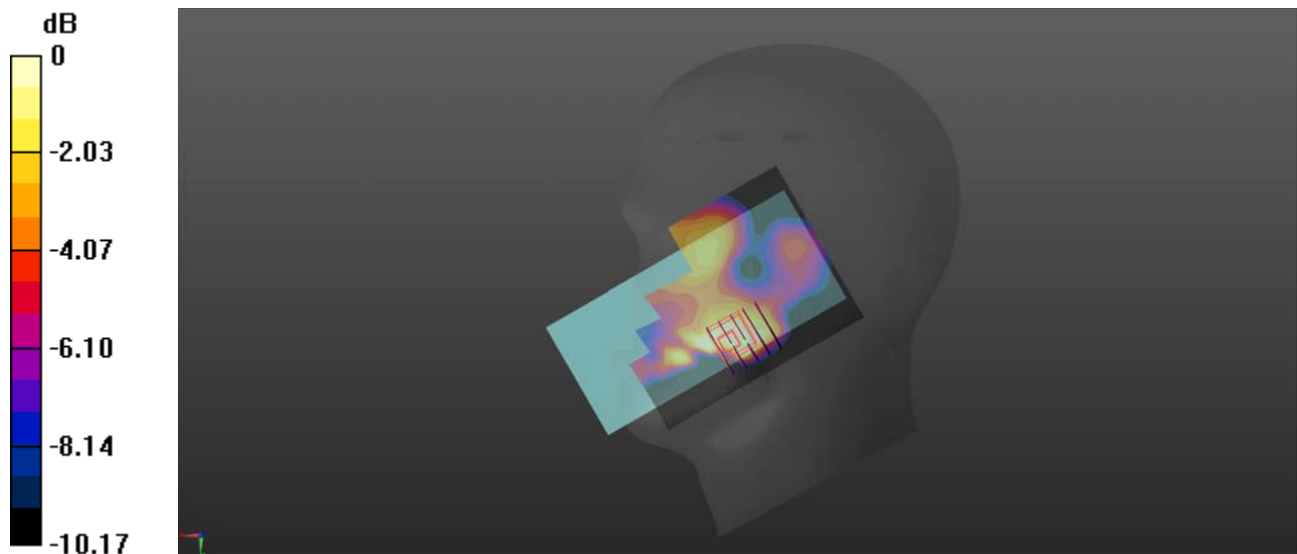
Communication System: UID 0, LTE (0); Frequency: 1732.5 MHz; Duty Cycle: 1:1  
Medium: HSL\_1800 Medium parameters used:  $f = 1733$  MHz;  $\sigma = 1.366$  S/m;  $\epsilon_r = 41.367$ ;  $\rho = 1000$  kg/m<sup>3</sup>  
Ambient Temperature : 23.2 °C; Liquid Temperature : 22.2 °C

### DASY5 Configuration:

- Probe: EX3DV4 - SN7608; ConvF(8.26, 8.26, 8.26) @ 1732.5 MHz; Calibrated: 2022.01.12
- Sensor-Surface: 2mm (Mechanical Surface Detection)
- Electronics: DAE4 Sn1643; Calibrated: 2021.12.30
- Phantom: Twin-SAM; Type: QD 000 P41 Ax; Serial: 2020
- Measurement SW: DASY52, Version 52.10 (4); SEMCAD X Version 14.6.14 (7483)

**Ch20175/Area Scan (71x91x1):** Interpolated grid: dx=1.500 mm, dy=1.500 mm  
Maximum value of SAR (interpolated) = 0.0829 W/kg

**Ch20175/Zoom Scan (5x5x7)/Cube 0:** Measurement grid: dx=8mm, dy=8mm, dz=5mm  
Reference Value = 2.767 V/m; Power Drift = 0.04 dB  
Peak SAR (extrapolated) = 0.0770 W/kg  
**SAR(1 g) = 0.052 W/kg; SAR(10 g) = 0.033 W/kg**  
Maximum value of SAR (measured) = 0.0628 W/kg



0 dB = 0.0628 W/kg



## LTE Band 5\_10MHz\_QPSK\_1RB\_0Offset\_Right Cheek\_Ch20525

Communication System: UID 0, LTE (0); Frequency: 836.5 MHz; Duty Cycle: 1:1

Medium: HSL\_900 Medium parameters used:  $f = 836.5$  MHz;  $\sigma = 0.958$  S/m;  $\epsilon_r = 40.846$ ;  $\rho = 1000$  kg/m<sup>3</sup>

Ambient Temperature : 23.2 °C; Liquid Temperature : 22.2 °C

DASY5 Configuration:

- Probe: EX3DV4 - SN7608; ConvF(9.81, 9.81, 9.81) @ 836.5 MHz; Calibrated: 2022.01.12
- Sensor-Surface: 2mm (Mechanical Surface Detection)
- Electronics: DAE4 Sn1643; Calibrated: 2021.12.30
- Phantom: Twin-SAM; Type: QD 000 P41 Ax; Serial: 2020
- Measurement SW: DASY52, Version 52.10 (4); SEMCAD X Version 14.6.14 (7483)

**Ch20525/Area Scan (71x91x1):** Interpolated grid: dx=1.500 mm, dy=1.500 mm

Maximum value of SAR (interpolated) = 0.226 W/kg

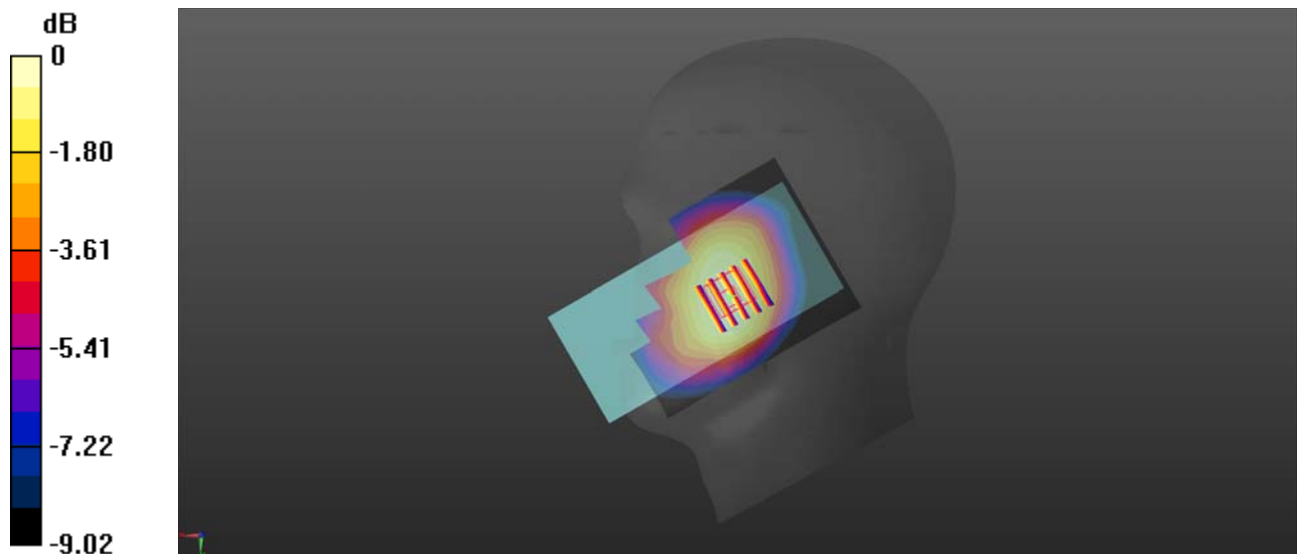
**Ch20525/Zoom Scan (5x5x7)/Cube 0:** Measurement grid: dx=8mm, dy=8mm, dz=5mm

Reference Value = 1.026 V/m; Power Drift = 0.07 dB

Peak SAR (extrapolated) = 0.255 W/kg

**SAR(1 g) = 0.200 W/kg; SAR(10 g) = 0.154 W/kg**

Maximum value of SAR (measured) = 0.231 W/kg



0 dB = 0.231 W/kg

## LTE Band 7\_20MHz\_QPSK\_1RB\_0Offset\_Right Cheek\_Ch21100

Communication System: UID 0, LTE (0); Frequency: 2535 MHz; Duty Cycle: 1:1

Medium: HSL\_2600 Medium parameters used:  $f = 2535$  MHz;  $\sigma = 1.911$  S/m;  $\epsilon_r = 38.489$ ;  $\rho = 1000$  kg/m<sup>3</sup>

Ambient Temperature : 23.2 °C; Liquid Temperature : 22.3 °C

DASY5 Configuration:

- Probe: EX3DV4 - SN7608; ConvF(7.42, 7.42, 7.42) @ 2535 MHz; Calibrated: 2022.01.12
- Sensor-Surface: 2mm (Mechanical Surface Detection)
- Electronics: DAE4 Sn1643; Calibrated: 2021.12.30
- Phantom: Twin-SAM; Type: QD 000 P41 Ax; Serial: 2020
- Measurement SW: DASY52, Version 52.10 (4); SEMCAD X Version 14.6.14 (7483)

**Ch21100/Area Scan (91x111x1):** Interpolated grid: dx=1.200 mm, dy=1.200 mm

Maximum value of SAR (interpolated) = 0.172 W/kg

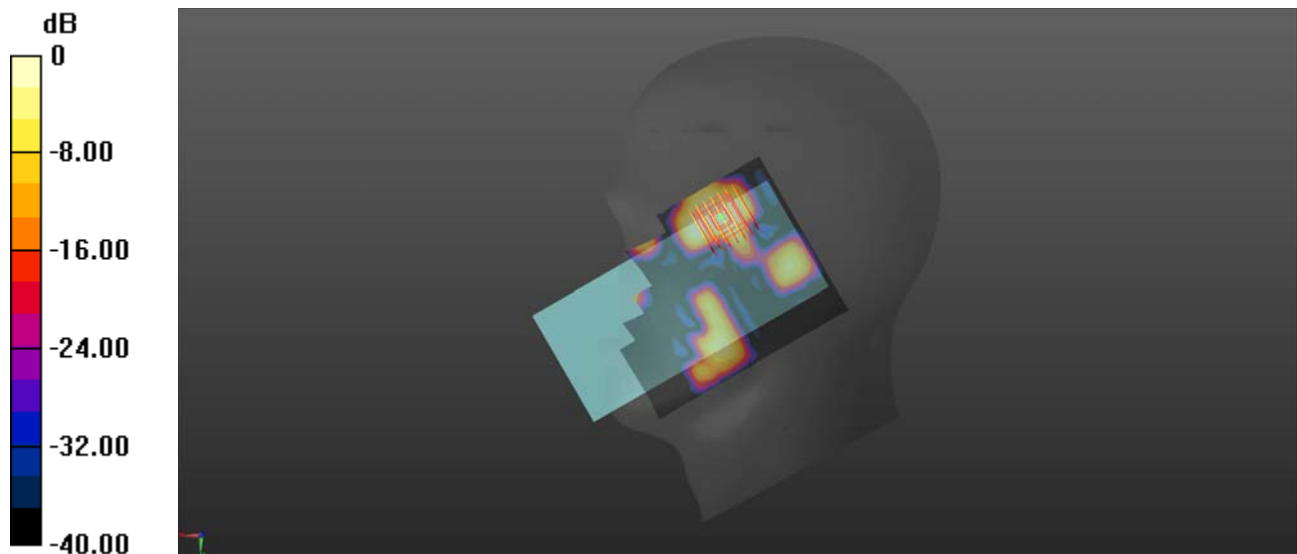
**Ch21100/Zoom Scan (7x7x7)/Cube 0:** Measurement grid: dx=5mm, dy=5mm, dz=5mm

Reference Value = 0 V/m; Power Drift = 0.07 dB

Peak SAR (extrapolated) = 0.188 W/kg

**SAR(1 g) = 0.080 W/kg; SAR(10 g) = 0.034 W/kg**

Maximum value of SAR (measured) = 0.125 W/kg



0 dB = 0.125 W/kg

## LTE Band 13\_10MHz\_QPSK\_1RB\_0Offset\_Right Cheek\_Ch23230

Communication System: UID 0, LTE (0); Frequency: 782 MHz; Duty Cycle: 1:1

Medium: HSL\_750 Medium parameters used:  $f = 782$  MHz;  $\sigma = 0.932$  S/m;  $\epsilon_r = 40.959$ ;  $\rho = 1000$  kg/m<sup>3</sup>

Ambient Temperature : 23.2 °C; Liquid Temperature : 22.2 °C

DASY5 Configuration:

- Probe: EX3DV4 - SN7608; ConvF(10.2, 10.2, 10.2) @ 782 MHz; Calibrated: 2022.01.12
- Sensor-Surface: 2mm (Mechanical Surface Detection)
- Electronics: DAE4 Sn1643; Calibrated: 2021.12.30
- Phantom: Twin-SAM; Type: QD 000 P41 Ax; Serial: 2020
- Measurement SW: DASY52, Version 52.10 (4); SEMCAD X Version 14.6.14 (7483)

**Ch23230/Area Scan (71x91x1):** Interpolated grid: dx=1.500 mm, dy=1.500 mm

Maximum value of SAR (interpolated) = 0.192 W/kg

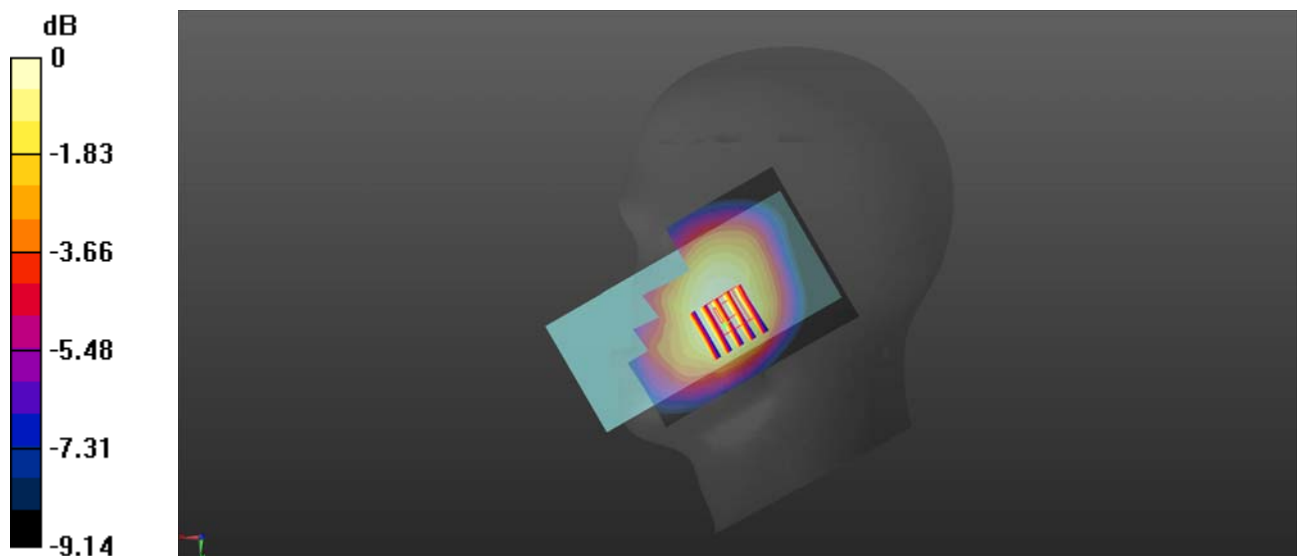
**Ch23230/Zoom Scan (5x5x7)/Cube 0:** Measurement grid: dx=8mm, dy=8mm, dz=5mm

Reference Value = 2.797 V/m; Power Drift = 0.03 dB

Peak SAR (extrapolated) = 0.205 W/kg

**SAR(1 g) = 0.161 W/kg; SAR(10 g) = 0.124 W/kg**

Maximum value of SAR (measured) = 0.182 W/kg



0 dB = 0.182 W/kg

## LTE Band 38\_20MHz\_QPSK\_1RB\_0Offset\_Right Cheek\_Ch38000

Communication System: UID 0, LTE (0); Frequency: 2595 MHz; Duty Cycle: 1:1.59

Medium: HSL\_2600 Medium parameters used:  $f = 2595$  MHz;  $\sigma = 1.98$  S/m;  $\epsilon_r = 38.287$ ;  $\rho = 1000$  kg/m<sup>3</sup>

Ambient Temperature : 23.2 °C; Liquid Temperature : 22.3 °C

DASY5 Configuration:

- Probe: EX3DV4 - SN7608; ConvF(7.08, 7.08, 7.08) @ 2595 MHz; Calibrated: 2022.01.12
- Sensor-Surface: 2mm (Mechanical Surface Detection)
- Electronics: DAE4 Sn1643; Calibrated: 2021.12.30
- Phantom: Twin-SAM; Type: QD 000 P41 Ax; Serial: 2020
- Measurement SW: DASY52, Version 52.10 (4); SEMCAD X Version 14.6.14 (7483)

**Ch38000/Area Scan (91x111x1):** Interpolated grid: dx=1.200 mm, dy=1.200 mm

Maximum value of SAR (interpolated) = 0.0597 W/kg

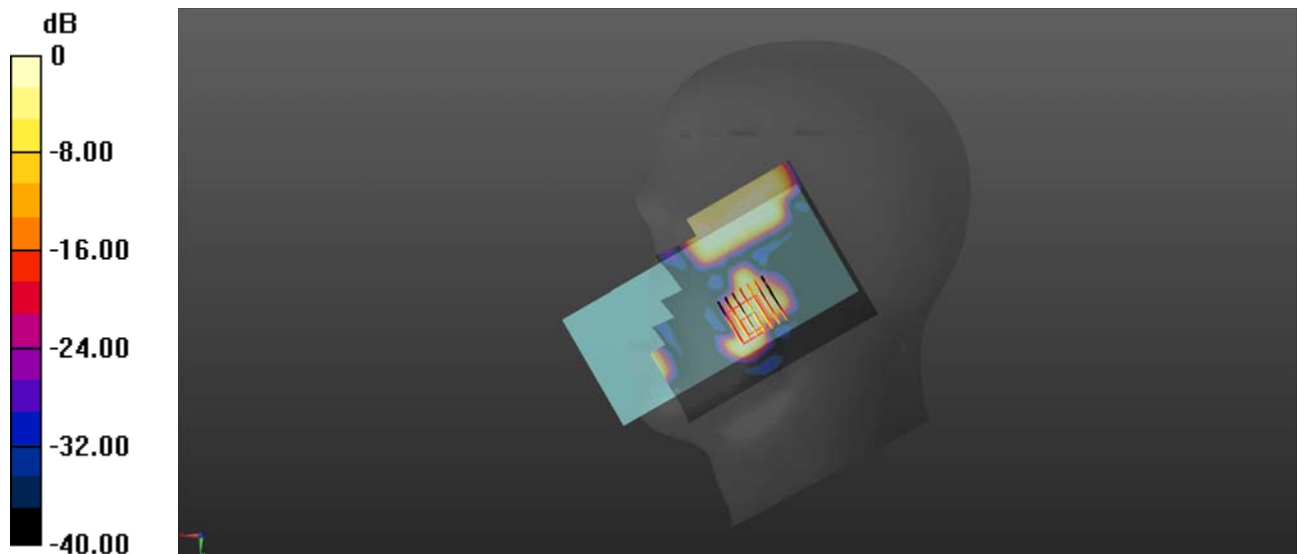
**Ch38000/Zoom Scan (7x7x7)/Cube 0:** Measurement grid: dx=5mm, dy=5mm, dz=5mm

Reference Value = 0 V/m; Power Drift = 0.06 dB

Peak SAR (extrapolated) = 0.0420 W/kg

**SAR(1 g) = 0.126 W/kg; SAR(10 g) = 0.075 W/kg**

Maximum value of SAR (measured) = 0.0328 W/kg



0 dB = 0.0328 W/kg

## LTE Band 41\_20MHz\_QPSK\_1RB\_0Offset\_Right Cheek\_Ch40640

Communication System: UID 0, LTE (0); Frequency: 2595 MHz; Duty Cycle: 1:1.59

Medium: HSL\_2600 Medium parameters used:  $f = 2595$  MHz;  $\sigma = 1.98$  S/m;  $\epsilon_r = 38.287$ ;  $\rho = 1000$  kg/m<sup>3</sup>

Ambient Temperature : 23.2 °C; Liquid Temperature : 22.3 °C

DASY5 Configuration:

- Probe: EX3DV4 - SN7608; ConvF(7.08, 7.08, 7.08) @ 2595 MHz; Calibrated: 2022.01.12
- Sensor-Surface: 2mm (Mechanical Surface Detection)
- Electronics: DAE4 Sn1643; Calibrated: 2021.12.30
- Phantom: Twin-SAM; Type: QD 000 P41 Ax; Serial: 2020
- Measurement SW: DASY52, Version 52.10 (4); SEMCAD X Version 14.6.14 (7483)

**Ch40640/Area Scan (71x91x1):** Interpolated grid: dx=1.500 mm, dy=1.500 mm

Maximum value of SAR (interpolated) = 0.112 W/kg

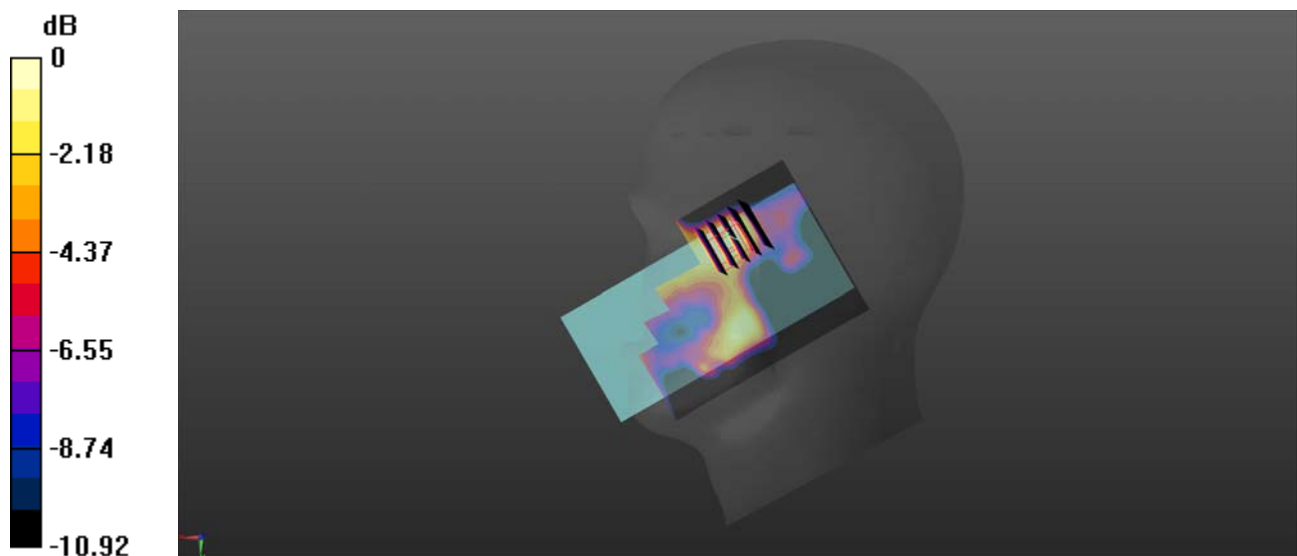
**Ch40640/Zoom Scan (5x5x7)/Cube 0:** Measurement grid: dx=8mm, dy=8mm, dz=5mm

Reference Value = 0 V/m; Power Drift = 0.02 dB

Peak SAR (extrapolated) = 0.123 W/kg

**SAR(1 g) = 0.085 W/kg; SAR(10 g) = 0.069 W/kg**

Maximum value of SAR (measured) = 0.0769 W/kg



0 dB = 0.0769 W/kg

## LTE Band 66\_20MHz\_QPSK\_1RB\_0Offset\_Right Cheek\_Ch132322

Communication System: UID 0, LTE (0); Frequency: 1745 MHz; Duty Cycle: 1:1

Medium: HSL\_1800 Medium parameters used:  $f = 1745$  MHz;  $\sigma = 1.382$  S/m;  $\epsilon_r = 41.164$ ;  $\rho = 1000$  kg/m<sup>3</sup>

Ambient Temperature : 23.2 °C; Liquid Temperature : 22.2 °C

DASY5 Configuration:

- Probe: EX3DV4 - SN7608; ConvF(8.26, 8.26, 8.26) @ 1745 MHz; Calibrated: 2022.01.12
- Sensor-Surface: 2mm (Mechanical Surface Detection)
- Electronics: DAE4 Sn1643; Calibrated: 2021.12.30
- Phantom: Twin-SAM; Type: QD 000 P41 Ax; Serial: 2020
- Measurement SW: DASY52, Version 52.10 (4); SEMCAD X Version 14.6.14 (7483)

**Ch132322/Area Scan (71x91x1):** Interpolated grid: dx=1.500 mm, dy=1.500 mm

Maximum value of SAR (interpolated) = 0.0876 W/kg

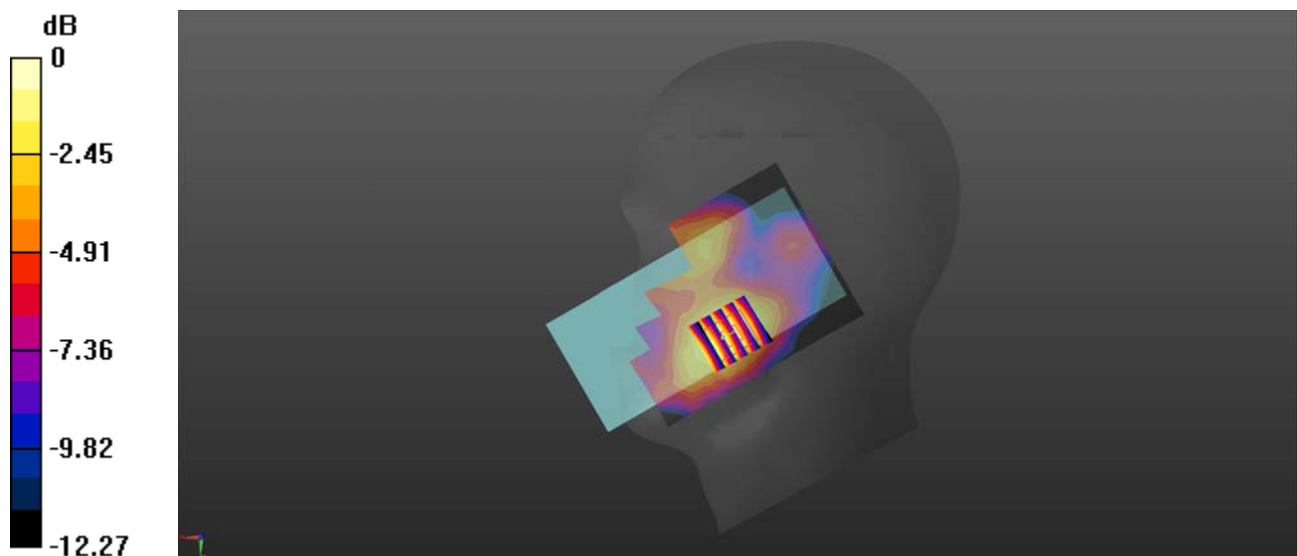
**Ch132322/Zoom Scan (5x5x7)/Cube 0:** Measurement grid: dx=8mm, dy=8mm, dz=5mm

Reference Value = 2.698 V/m; Power Drift = 0.08 dB

Peak SAR (extrapolated) = 0.107 W/kg

**SAR(1 g) = 0.071 W/kg; SAR(10 g) = 0.045 W/kg**

Maximum value of SAR (measured) = 0.0866 W/kg



0 dB = 0.0866 W/kg

## WLAN 2.4GHz\_802.11b 1Mbps\_Left Tilt\_Ch11

Communication System: UID 0, WLAN 2.4GHz 802.11b (0); Frequency: 2462 MHz; Duty Cycle: 1:1  
Medium: HSL\_2450 Medium parameters used:  $f = 2462$  MHz;  $\sigma = 1.826$  S/m;  $\epsilon_r = 38.806$ ;  $\rho = 1000$  kg/m<sup>3</sup>

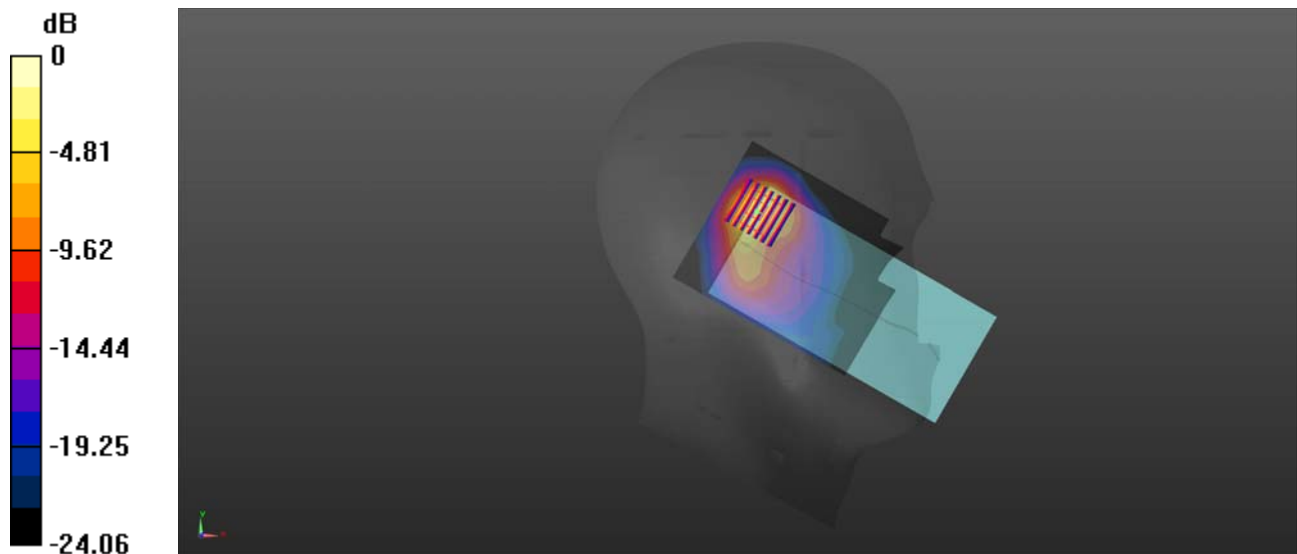
Ambient Temperature : 23.2 °C; Liquid Temperature : 22.1 °C

### DASY5 Configuration:

- Probe: EX3DV4 - SN7608; ConvF(7.42, 7.42, 7.42) @ 2462 MHz; Calibrated: 2022.01.12
- Sensor-Surface: 2mm (Mechanical Surface Detection)
- Electronics: DAE4 Sn1643; Calibrated: 2021.12.30
- Phantom: Twin-SAM; Type: QD 000 P41 Ax; Serial: 2020
- Measurement SW: DASY52, Version 52.10 (4); SEMCAD X Version 14.6.14 (7483)

**Ch11/Area Scan (81x101x1):** Interpolated grid: dx=1.200 mm, dy=1.200 mm  
Maximum value of SAR (interpolated) = 1.19 W/kg

**Ch11/Zoom Scan (7x7x7)/Cube 0:** Measurement grid: dx=5mm, dy=5mm, dz=5mm  
Reference Value = 11.07 V/m; Power Drift = 0.08 dB  
Peak SAR (extrapolated) = 1.77 W/kg  
**SAR(1 g) = 0.715 W/kg; SAR(10 g) = 0.288 W/kg**  
Maximum value of SAR (measured) = 1.19 W/kg



0 dB = 1.19 W/kg

## GSM850\_GPRS(2 TX slots)\_Back Side\_10mm\_Ch189

Communication System: UID 0, GSM850(class 10) (0); Frequency: 836.4 MHz; Duty Cycle: 1:4.15  
Medium: HSL\_900 Medium parameters used:  $f = 836.4$  MHz;  $\sigma = 0.958$  S/m;  $\epsilon_r = 40.843$ ;  $\rho = 1000$  kg/m<sup>3</sup>

Ambient Temperature : 23.2 °C; Liquid Temperature : 22.2 °C

### DASY5 Configuration:

- Probe: EX3DV4 - SN7608; ConvF(9.81, 9.81, 9.81) @ 836.4 MHz; Calibrated: 2022.01.12
- Sensor-Surface: 2mm (Mechanical Surface Detection)
- Electronics: DAE4 Sn1643; Calibrated: 2021.12.30
- Phantom: Twin-SAM; Type: QD 000 P41 Ax; Serial: 2020
- Measurement SW: DASY52, Version 52.10 (4); SEMCAD X Version 14.6.14 (7483)

**Ch189/Area Scan (71x121x1):** Interpolated grid: dx=1.500 mm, dy=1.500 mm

Maximum value of SAR (interpolated) = 0.597 W/kg

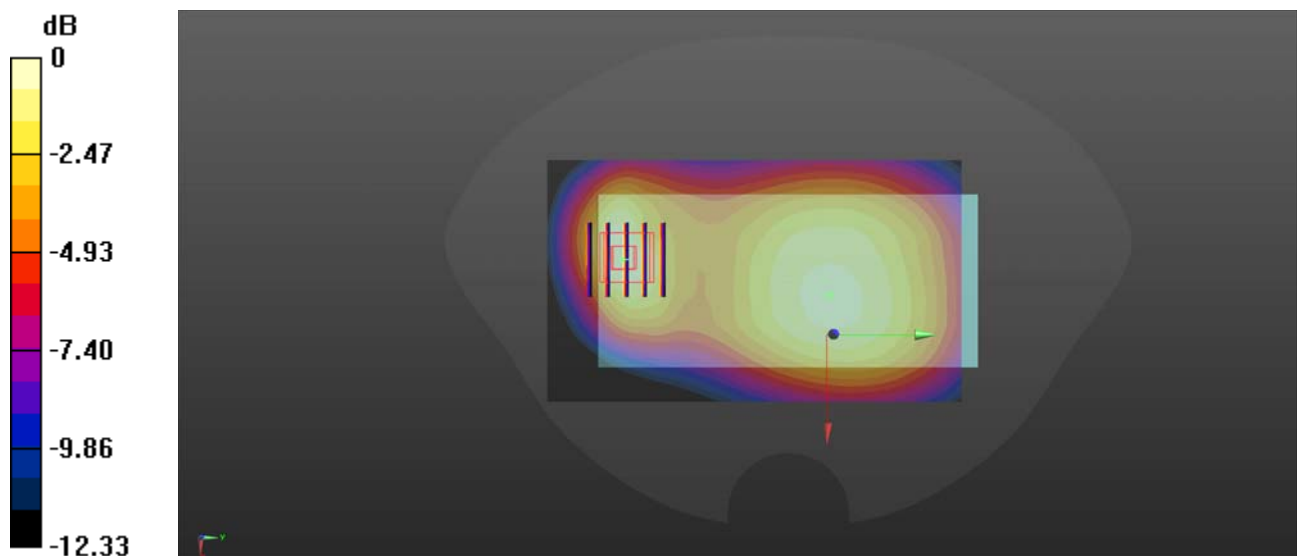
**Ch189/Zoom Scan (5x5x7)/Cube 0:** Measurement grid: dx=8mm, dy=8mm, dz=5mm

Reference Value = 20.42 V/m; Power Drift = -0.06 dB

Peak SAR (extrapolated) = 0.710 W/kg

**SAR(1 g) = 0.409 W/kg; SAR(10 g) = 0.240 W/kg**

Maximum value of SAR (measured) = 0.560 W/kg





## GSM1900\_GPRS(2 TX slots)\_Back Side\_10mm\_Ch661

Communication System: UID 0, GSM1900(Class 10) (0); Frequency: 1880 MHz; Duty Cycle: 1:4.15  
Medium: HSL\_2000 Medium parameters used:  $f = 1880$  MHz;  $\sigma = 1.321$  S/m;  $\epsilon_r = 39.882$ ;  $\rho = 1000$  kg/m<sup>3</sup>

Ambient Temperature : 23.2 °C; Liquid Temperature : 22.1 °C

### DASY5 Configuration:

- Probe: EX3DV4 - SN7608; ConvF(7.99, 7.99, 7.99) @ 1880 MHz; Calibrated: 2022.01.12
- Sensor-Surface: 2mm (Mechanical Surface Detection)
- Electronics: DAE4 Sn1643; Calibrated: 2021.12.30
- Phantom: Twin-SAM; Type: QD 000 P41 Ax; Serial: 2020
- Measurement SW: DASY52, Version 52.10 (4); SEMCAD X Version 14.6.14 (7483)

**Ch661/Area Scan (71x81x1):** Interpolated grid: dx=1.500 mm, dy=1.500 mm

Maximum value of SAR (interpolated) = 0.929 W/kg

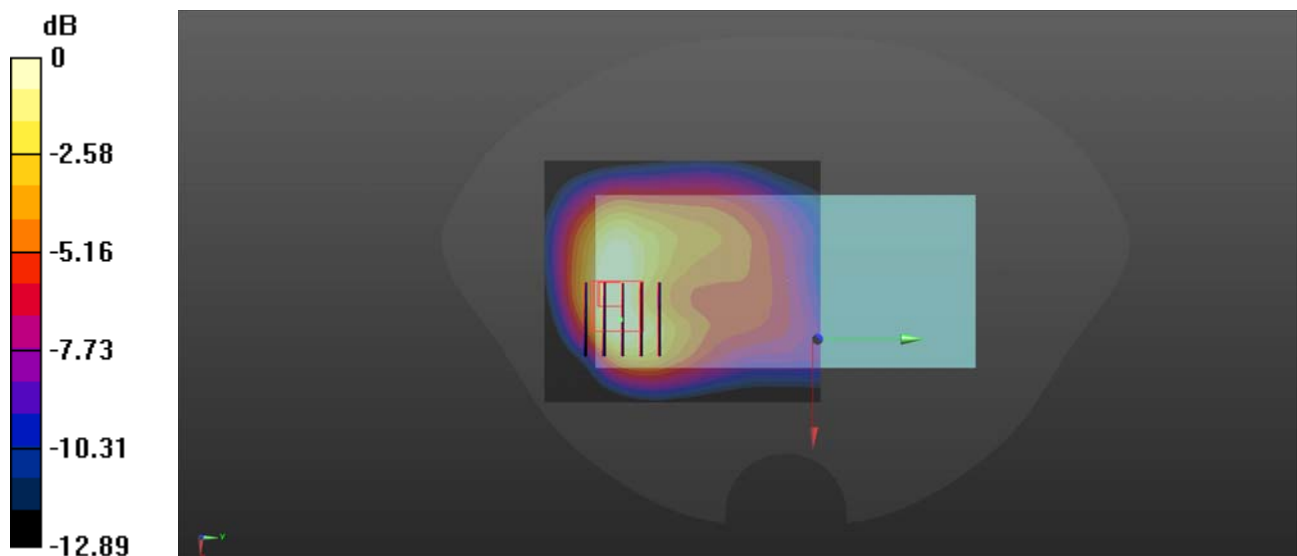
**Ch661/Zoom Scan (5x5x7)/Cube 0:** Measurement grid: dx=8mm, dy=8mm, dz=5mm

Reference Value = 10.38 V/m; Power Drift = 0.01 dB

Peak SAR (extrapolated) = 1.09 W/kg

**SAR(1 g) = 0.476 W/kg; SAR(10 g) = 0.261 W/kg**

Maximum value of SAR (measured) = 0.856 W/kg



0 dB = 0.856 W/kg

## GSM1900\_GPRS(2 TX slots)\_Bottom Side\_10mm\_Ch661

Communication System: UID 0, GSM1900(Class 10) (0); Frequency: 1880 MHz; Duty Cycle: 1:4.15  
Medium: HSL\_2000 Medium parameters used:  $f = 1880$  MHz;  $\sigma = 1.321$  S/m;  $\epsilon_r = 39.882$ ;  $\rho = 1000$  kg/m<sup>3</sup>

Ambient Temperature : 23.2 °C; Liquid Temperature : 22.3 °C

### DASY5 Configuration:

- Probe: EX3DV4 - SN7608; ConvF(7.99, 7.99, 7.99) @ 1880 MHz; Calibrated: 2022.01.12
- Sensor-Surface: 2mm (Mechanical Surface Detection)
- Electronics: DAE4 Sn1643; Calibrated: 2021.12.30
- Phantom: Twin-SAM; Type: QD 000 P41 Ax; Serial: 2020
- Measurement SW: DASY52, Version 52.10 (4); SEMCAD X Version 14.6.14 (7483)

**Ch661/Area Scan (41x81x1):** Interpolated grid: dx=1.500 mm, dy=1.500 mm

Maximum value of SAR (interpolated) = 0.970 W/kg

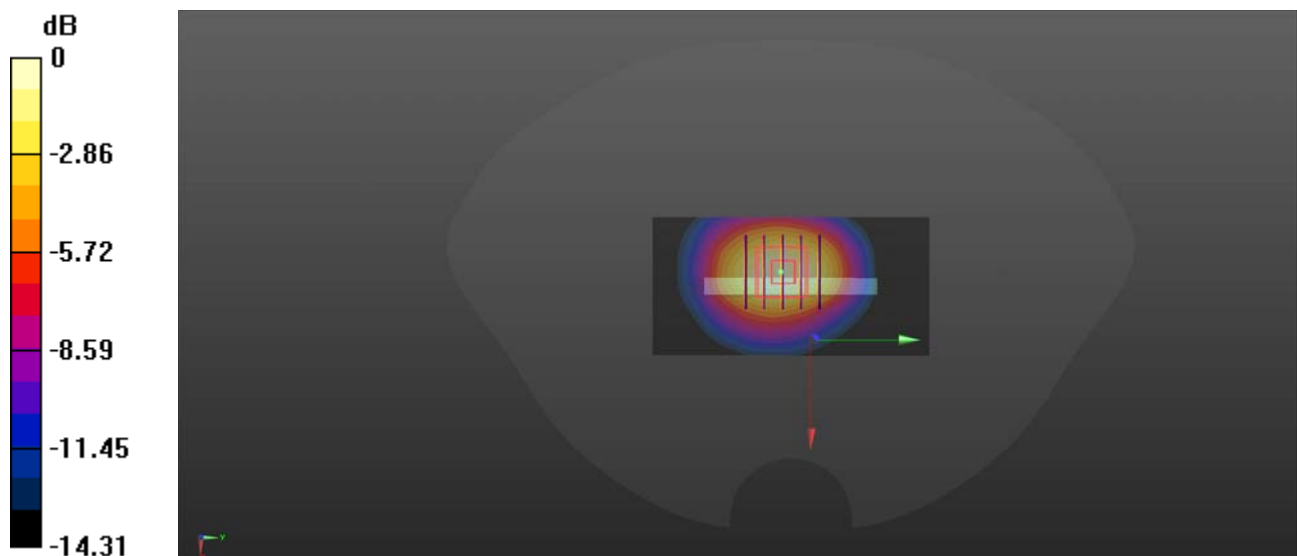
**Ch661/Zoom Scan (5x5x7)/Cube 0:** Measurement grid: dx=8mm, dy=8mm, dz=5mm

Reference Value = 21.74 V/m; Power Drift = 0.06 dB

Peak SAR (extrapolated) = 1.12 W/kg

**SAR(1 g) = 0.685 W/kg; SAR(10 g) = 0.390 W/kg**

Maximum value of SAR (measured) = 0.920 W/kg



0 dB = 0.920 W/kg

## WCDMA Band II\_RMC 12.2Kbps\_Back Side\_10mm\_Ch9400

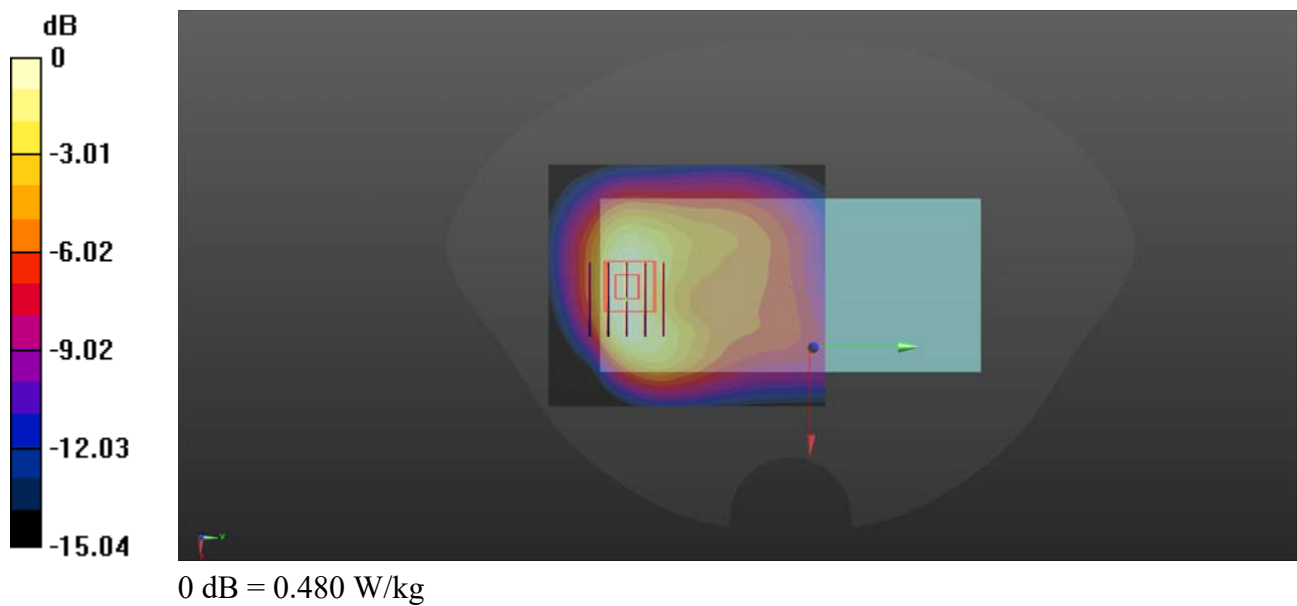
Communication System: UID 0, UMTS-FDD (0); Frequency: 1880 MHz; Duty Cycle: 1:1  
Medium: HSL\_2000 Medium parameters used:  $f = 1880$  MHz;  $\sigma = 1.321$  S/m;  $\epsilon_r = 39.882$ ;  $\rho = 1000$  kg/m<sup>3</sup>  
Ambient Temperature : 23.2 °C; Liquid Temperature : 22.3 °C

### DASY5 Configuration:

- Probe: EX3DV4 - SN7608; ConvF(7.99, 7.99, 7.99) @ 1880 MHz; Calibrated: 2022.01.12
- Sensor-Surface: 2mm (Mechanical Surface Detection)
- Electronics: DAE4 Sn1643; Calibrated: 2021.12.30
- Phantom: Twin-SAM; Type: QD 000 P41 Ax; Serial: 2020
- Measurement SW: DASY52, Version 52.10 (4); SEMCAD X Version 14.6.14 (7483)

**Ch9400/Area Scan (71x81x1):** Interpolated grid: dx=1.500 mm, dy=1.500 mm  
Maximum value of SAR (interpolated) = 0.522 W/kg

**Ch9400/Zoom Scan (5x5x7)/Cube 0:** Measurement grid: dx=8mm, dy=8mm, dz=5mm  
Reference Value = 7.870 V/m; Power Drift = -0.04 dB  
Peak SAR (extrapolated) = 0.583 W/kg  
**SAR(1 g) = 0.358 W/kg; SAR(10 g) = 0.209 W/kg**  
Maximum value of SAR (measured) = 0.480 W/kg



## WCDMA Band II\_RMC 12.2Kbps\_Bottom Side\_10mm\_Ch9400

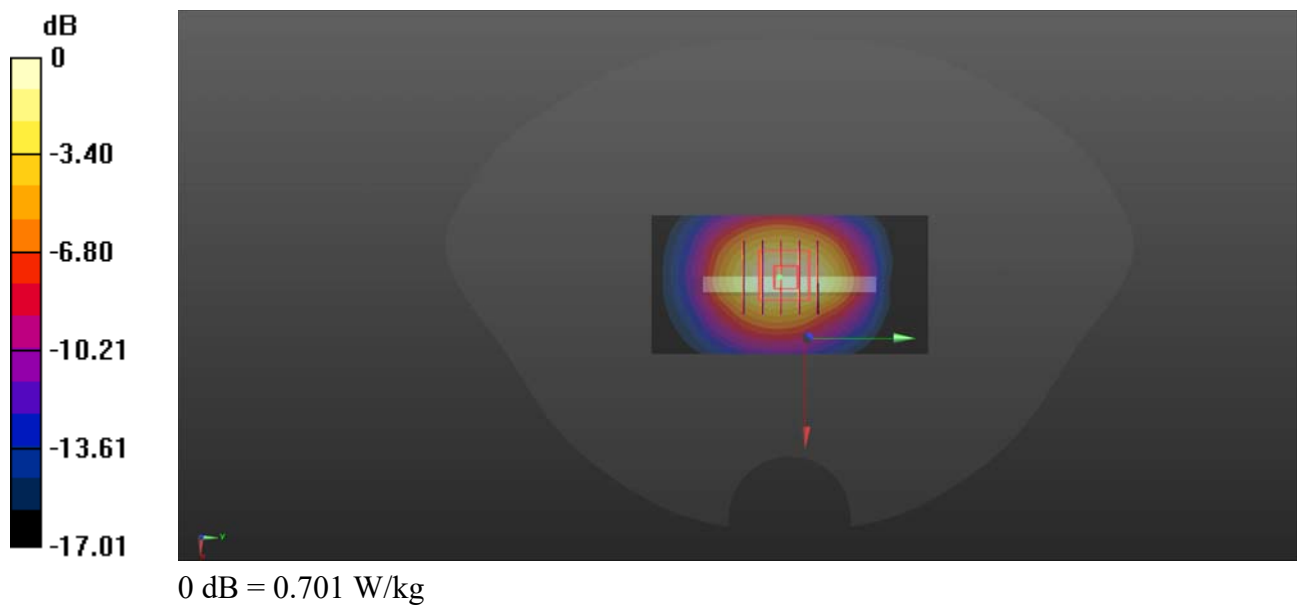
Communication System: UID 0, UMTS-FDD (0); Frequency: 1880 MHz; Duty Cycle: 1:1  
Medium: HSL\_2000 Medium parameters used:  $f = 1880$  MHz;  $\sigma = 1.321$  S/m;  $\epsilon_r = 39.882$ ;  $\rho = 1000$  kg/m<sup>3</sup>  
Ambient Temperature : 23.2 °C; Liquid Temperature : 22.3 °C

### DASY5 Configuration:

- Probe: EX3DV4 - SN7608; ConvF(7.99, 7.99, 7.99) @ 1880 MHz; Calibrated: 2022.01.12
- Sensor-Surface: 2mm (Mechanical Surface Detection)
- Electronics: DAE4 Sn1643; Calibrated: 2021.12.30
- Phantom: Twin-SAM; Type: QD 000 P41 Ax; Serial: 2020
- Measurement SW: DASY52, Version 52.10 (4); SEMCAD X Version 14.6.14 (7483)

**Ch9400/Area Scan (41x81x1):** Interpolated grid: dx=1.500 mm, dy=1.500 mm  
Maximum value of SAR (interpolated) = 0.754 W/kg

**Ch9400/Zoom Scan (5x5x7)/Cube 0:** Measurement grid: dx=8mm, dy=8mm, dz=5mm  
Reference Value = 20.77 V/m; Power Drift = -0.04 dB  
Peak SAR (extrapolated) = 0.865 W/kg  
**SAR(1 g) = 0.523 W/kg; SAR(10 g) = 0.295 W/kg**  
Maximum value of SAR (measured) = 0.701 W/kg



## WCDMA Band IV\_RMC 12.2Kbps\_Back Side\_10mm\_Ch1413

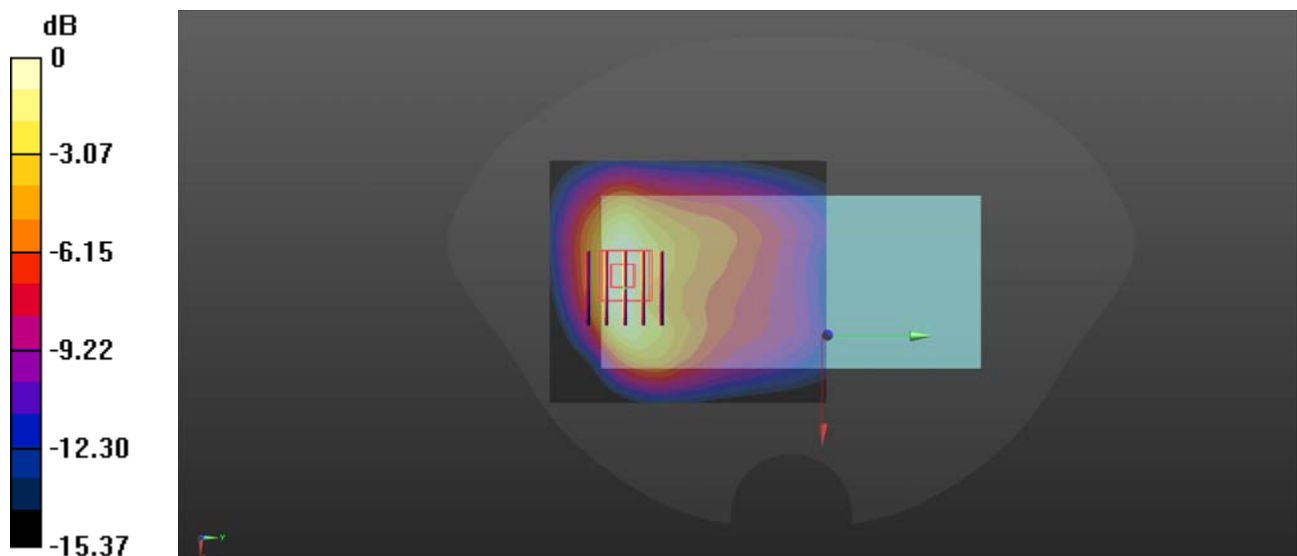
Communication System: UID 0, UMTS-FDD (0); Frequency: 1732.6 MHz; Duty Cycle: 1:1  
Medium: HSL\_1800 Medium parameters used:  $f = 1733$  MHz;  $\sigma = 1.366$  S/m;  $\epsilon_r = 41.367$ ;  $\rho = 1000$  kg/m<sup>3</sup>  
Ambient Temperature : 23.2 °C; Liquid Temperature : 22.2 °C

### DASY5 Configuration:

- Probe: EX3DV4 - SN7608; ConvF(8.26, 8.26, 8.26) @ 1732.6 MHz; Calibrated: 2022.01.12
- Sensor-Surface: 2mm (Mechanical Surface Detection)
- Electronics: DAE4 Sn1643; Calibrated: 2021.12.30
- Phantom: Twin-SAM; Type: QD 000 P41 Ax; Serial: 2020
- Measurement SW: DASY52, Version 52.10 (4); SEMCAD X Version 14.6.14 (7483)

**Ch1413/Area Scan (71x81x1):** Interpolated grid: dx=1.500 mm, dy=1.500 mm  
Maximum value of SAR (interpolated) = 0.904 W/kg

**Ch1413/Zoom Scan (5x5x7)/Cube 0:** Measurement grid: dx=8mm, dy=8mm, dz=5mm  
Reference Value = 7.955 V/m; Power Drift = 0.06 dB  
Peak SAR (extrapolated) = 1.06 W/kg  
**SAR(1 g) = 0.657 W/kg; SAR(10 g) = 0.380 W/kg**  
Maximum value of SAR (measured) = 0.867 W/kg



0 dB = 0.867 W/kg

## WCDMA Band IV\_RMC 12.2Kbps\_Bottom Side\_10mm\_Ch1513

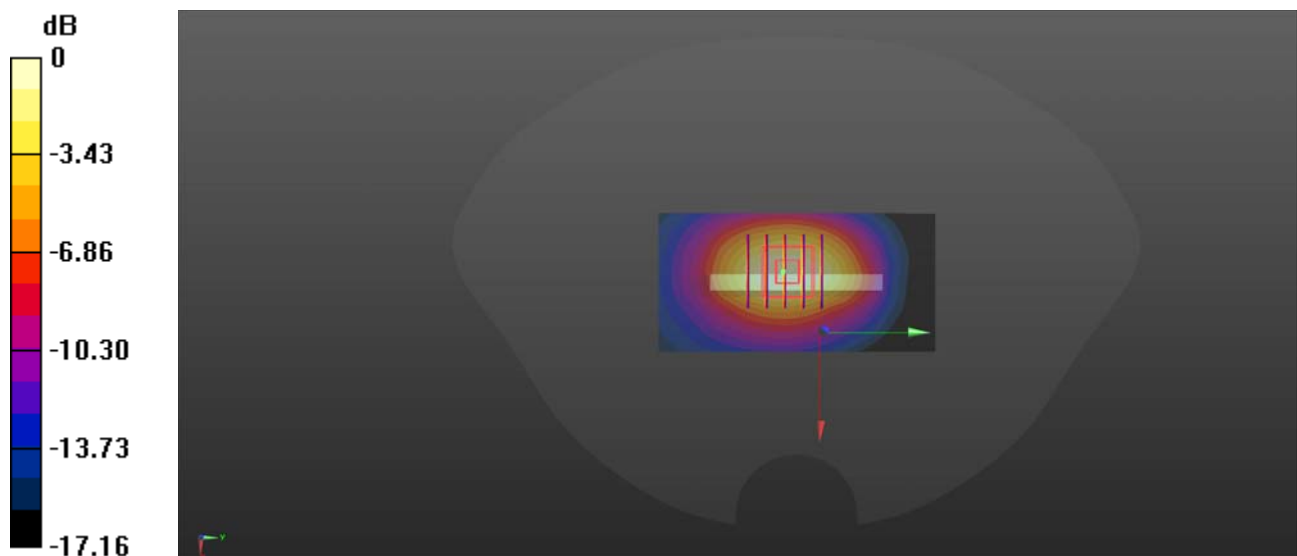
Communication System: UID 0, UMTS-FDD (0); Frequency: 1752.6 MHz; Duty Cycle: 1:1  
Medium: HSL\_1800 Medium parameters used:  $f = 1753$  MHz;  $\sigma = 1.392$  S/m;  $\epsilon_r = 41.122$ ;  $\rho = 1000$  kg/m<sup>3</sup>  
Ambient Temperature : 23.2 °C; Liquid Temperature : 22.2 °C

### DASY5 Configuration:

- Probe: EX3DV4 - SN7608; ConvF(8.26, 8.26, 8.26) @ 1752.6 MHz; Calibrated: 2022.01.12
- Sensor-Surface: 2mm (Mechanical Surface Detection)
- Electronics: DAE4 Sn1643; Calibrated: 2021.12.30
- Phantom: Twin-SAM; Type: QD 000 P41 Ax; Serial: 2020
- Measurement SW: DASY52, Version 52.10 (4); SEMCAD X Version 14.6.14 (7483)

**Ch1513/Area Scan (41x81x1):** Interpolated grid: dx=1.500 mm, dy=1.500 mm  
Maximum value of SAR (interpolated) = 1.19 W/kg

**Ch1513/Zoom Scan (5x5x7)/Cube 0:** Measurement grid: dx=8mm, dy=8mm, dz=5mm  
Reference Value = 24.49 V/m; Power Drift = -0.04 dB  
Peak SAR (extrapolated) = 1.35 W/kg  
**SAR(1 g) = 0.816 W/kg; SAR(10 g) = 0.460 W/kg**  
Maximum value of SAR (measured) = 1.11 W/kg



0 dB = 1.11 W/kg

## WCDMA Band V\_RMC 12.2Kbps\_Back Side\_10mm\_Ch4182

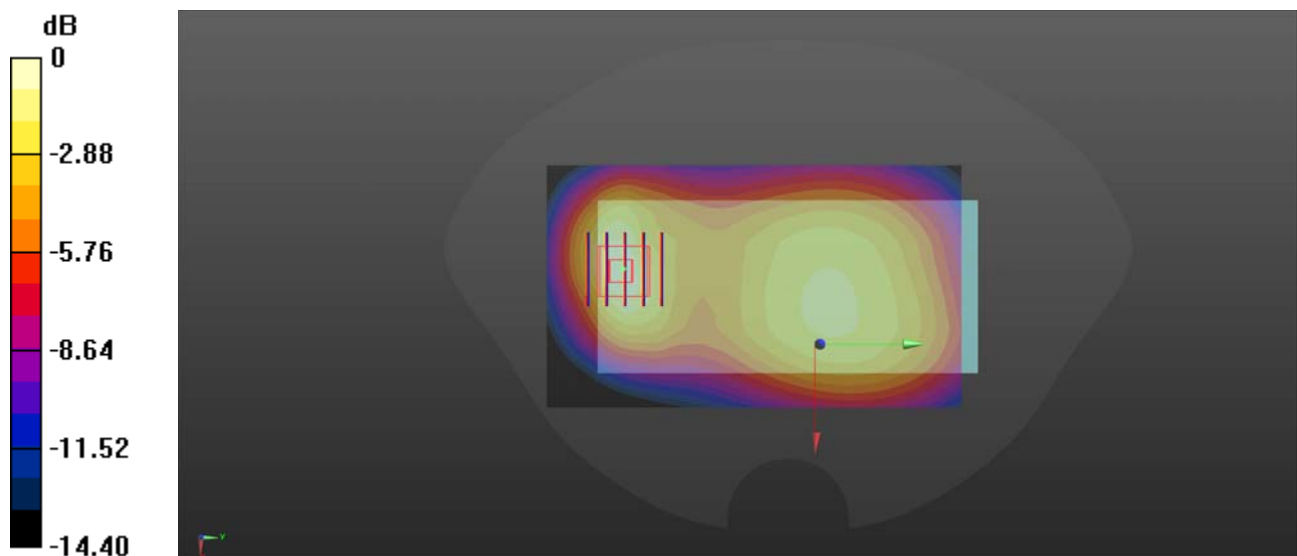
Communication System: UID 0, UMTS-FDD (0); Frequency: 836.4 MHz; Duty Cycle: 1:1  
Medium: HSL\_900 Medium parameters used:  $f = 836.4$  MHz;  $\sigma = 0.958$  S/m;  $\epsilon_r = 40.843$ ;  $\rho = 1000$  kg/m<sup>3</sup>  
Ambient Temperature : 23.2 °C; Liquid Temperature : 22.2 °C

### DASY5 Configuration:

- Probe: EX3DV4 - SN7608; ConvF(9.81, 9.81, 9.81) @ 836.4 MHz; Calibrated: 2022.01.12
- Sensor-Surface: 2mm (Mechanical Surface Detection)
- Electronics: DAE4 Sn1643; Calibrated: 2021.12.30
- Phantom: Twin-SAM; Type: QD 000 P41 Ax; Serial: 2020
- Measurement SW: DASY52, Version 52.10 (4); SEMCAD X Version 14.6.14 (7483)

**Ch4182/Area Scan (71x121x1):** Interpolated grid: dx=1.500 mm, dy=1.500 mm  
Maximum value of SAR (interpolated) = 0.417 W/kg

**Ch4182/Zoom Scan (5x5x7)/Cube 0:** Measurement grid: dx=8mm, dy=8mm, dz=5mm  
Reference Value = 15.48 V/m; Power Drift = -0.05 dB  
Peak SAR (extrapolated) = 0.512 W/kg  
**SAR(1 g) = 0.297 W/kg; SAR(10 g) = 0.175 W/kg**  
Maximum value of SAR (measured) = 0.403 W/kg



0 dB = 0.403 W/kg

## LTE Band 2\_20MHz\_QPSK\_1RB\_0Offset\_Back Side\_10mm\_Ch18900

Communication System: UID 0, LTE (0); Frequency: 1880 MHz; Duty Cycle: 1:1

Medium: HSL\_2000 Medium parameters used:  $f = 1880$  MHz;  $\sigma = 1.321$  S/m;  $\epsilon_r = 39.882$ ;  $\rho = 1000$  kg/m<sup>3</sup>

Ambient Temperature : 23.2 °C; Liquid Temperature : 22.3 °C

DASY5 Configuration:

- Probe: EX3DV4 - SN7608; ConvF(7.99, 7.99, 7.99) @ 1880 MHz; Calibrated: 2022.01.12
- Sensor-Surface: 2mm (Mechanical Surface Detection)
- Electronics: DAE4 Sn1643; Calibrated: 2021.12.30
- Phantom: Twin-SAM; Type: QD 000 P41 Ax; Serial: 2020
- Measurement SW: DASY52, Version 52.10 (4); SEMCAD X Version 14.6.14 (7483)

**Ch18900/Area Scan (71x81x1):** Interpolated grid: dx=1.500 mm, dy=1.500 mm

Maximum value of SAR (interpolated) = 0.526 W/kg

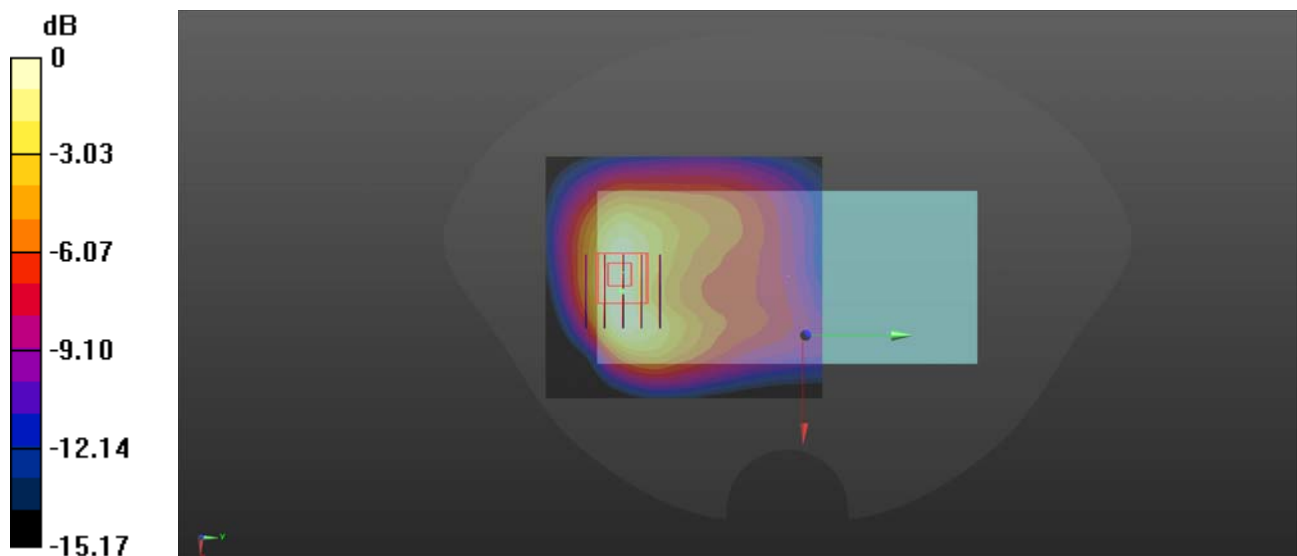
**Ch18900/Zoom Scan (5x5x7)/Cube 0:** Measurement grid: dx=8mm, dy=8mm, dz=5mm

Reference Value = 6.954 V/m; Power Drift = -0.05 dB

Peak SAR (extrapolated) = 0.624 W/kg

**SAR(1 g) = 0.381 W/kg; SAR(10 g) = 0.218 W/kg**

Maximum value of SAR (measured) = 0.509 W/kg



0 dB = 0.509 W/kg



## LTE Band 2\_20MHz\_QPSK\_1RB\_0Offset\_Bottom Side\_10mm\_Ch18900

Communication System: UID 0, LTE (0); Frequency: 1880 MHz; Duty Cycle: 1:1

Medium: HSL\_2000 Medium parameters used:  $f = 1880$  MHz;  $\sigma = 1.321$  S/m;  $\epsilon_r = 39.882$ ;  $\rho = 1000$  kg/m<sup>3</sup>

Ambient Temperature : 23.2 °C; Liquid Temperature : 22.3 °C

DASY5 Configuration:

- Probe: EX3DV4 - SN7608; ConvF(7.99, 7.99, 7.99) @ 1880 MHz; Calibrated: 2022.01.12
- Sensor-Surface: 2mm (Mechanical Surface Detection)
- Electronics: DAE4 Sn1643; Calibrated: 2021.12.30
- Phantom: Twin-SAM; Type: QD 000 P41 Ax; Serial: 2020
- Measurement SW: DASY52, Version 52.10 (4); SEMCAD X Version 14.6.14 (7483)

**Ch18900/Area Scan (41x81x1):** Interpolated grid: dx=1.500 mm, dy=1.500 mm

Maximum value of SAR (interpolated) = 0.863 W/kg

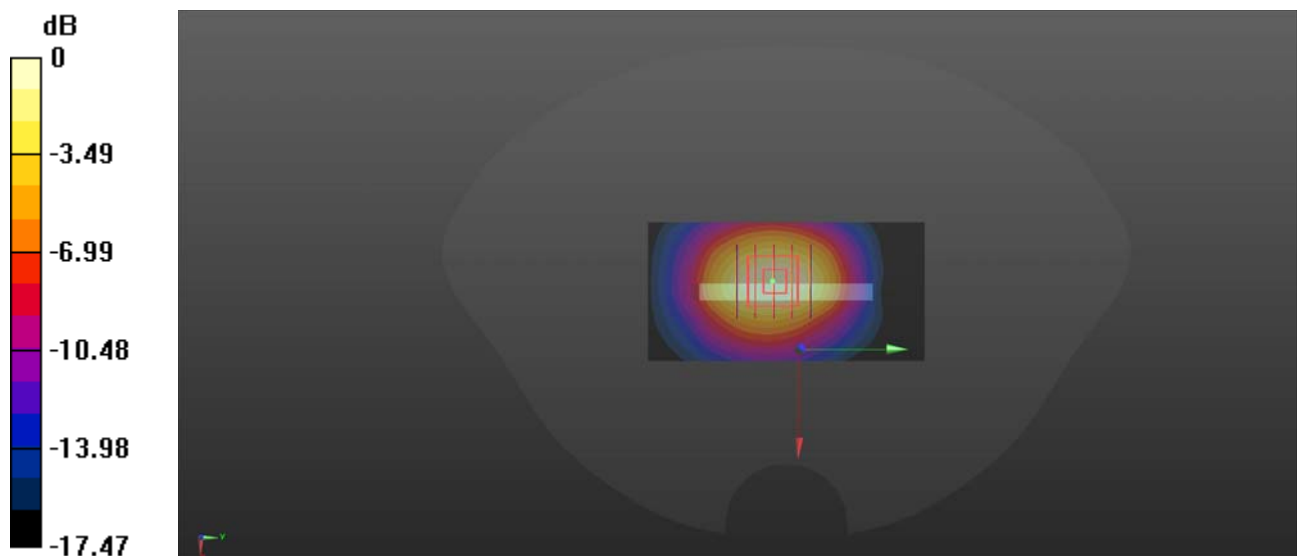
**Ch18900/Zoom Scan (5x5x7)/Cube 0:** Measurement grid: dx=8mm, dy=8mm, dz=5mm

Reference Value = 21.48 V/m; Power Drift = -0.09 dB

Peak SAR (extrapolated) = 0.982 W/kg

**SAR(1 g) = 0.579 W/kg; SAR(10 g) = 0.325 W/kg**

Maximum value of SAR (measured) = 0.789 W/kg



0 dB = 0.789 W/kg

## LTE Band 4\_20MHz\_QPSK\_1RB\_0Offset\_Back Side\_10mm\_Ch20175

Communication System: UID 0, LTE (0); Frequency: 1732.5 MHz; Duty Cycle: 1:1

Medium: HSL\_1800 Medium parameters used:  $f = 1733$  MHz;  $\sigma = 1.366$  S/m;  $\epsilon_r = 41.367$ ;  $\rho = 1000$  kg/m<sup>3</sup>

Ambient Temperature : 23.2 °C; Liquid Temperature : 22.2 °C

DASY5 Configuration:

- Probe: EX3DV4 - SN7608; ConvF(8.26, 8.26, 8.26) @ 1732.5 MHz; Calibrated: 2022.01.12
- Sensor-Surface: 2mm (Mechanical Surface Detection)
- Electronics: DAE4 Sn1643; Calibrated: 2021.12.30
- Phantom: Twin-SAM; Type: QD 000 P41 Ax; Serial: 2020
- Measurement SW: DASY52, Version 52.10 (4); SEMCAD X Version 14.6.14 (7483)

**Ch20175/Area Scan (71x81x1):** Interpolated grid: dx=1.500 mm, dy=1.500 mm

Maximum value of SAR (interpolated) = 0.945 W/kg

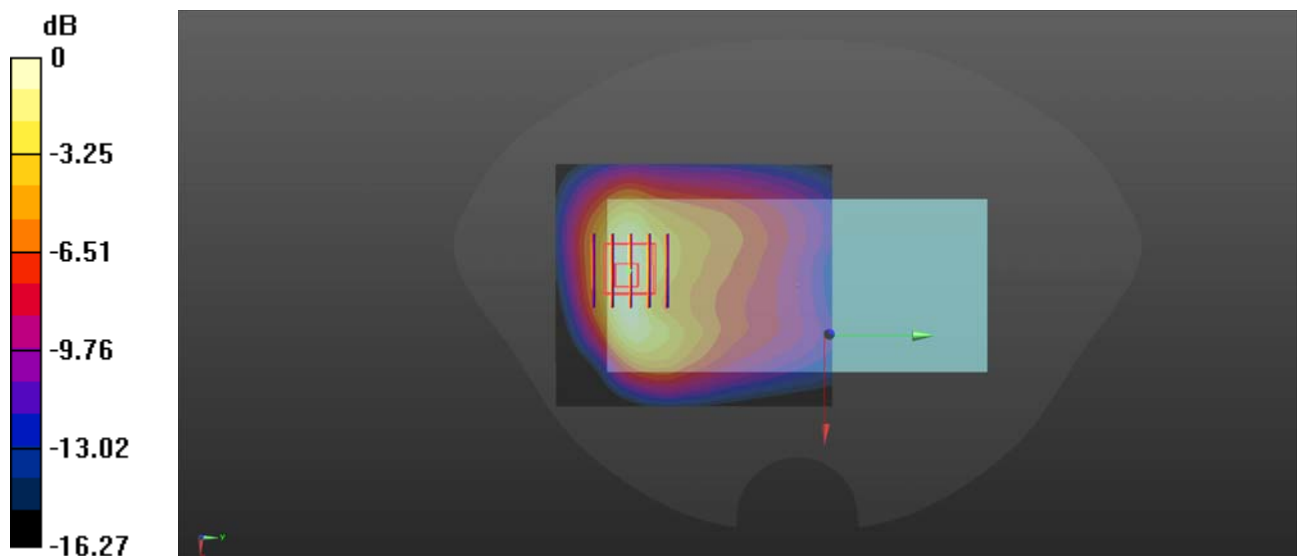
**Ch20175/Zoom Scan (5x5x7)/Cube 0:** Measurement grid: dx=8mm, dy=8mm, dz=5mm

Reference Value = 7.584 V/m; Power Drift = 0.07 dB

Peak SAR (extrapolated) = 1.13 W/kg

**SAR(1 g) = 0.696 W/kg; SAR(10 g) = 0.404 W/kg**

Maximum value of SAR (measured) = 0.923 W/kg



0 dB = 0.923 W/kg

### LTE Band 4\_20MHz\_QPSK\_1RB\_0Offset\_Bottom Side\_10mm\_Ch20300

Communication System: UID 0, LTE (0); Frequency: 1745 MHz; Duty Cycle: 1:1

Medium: HSL\_1800 Medium parameters used:  $f = 1745$  MHz;  $\sigma = 1.382$  S/m;  $\epsilon_r = 41.164$ ;  $\rho = 1000$  kg/m<sup>3</sup>

Ambient Temperature : 23.2 °C; Liquid Temperature : 22.2 °C

DASY5 Configuration:

- Probe: EX3DV4 - SN7608; ConvF(8.26, 8.26, 8.26) @ 1745 MHz; Calibrated: 2022.01.12
- Sensor-Surface: 2mm (Mechanical Surface Detection)
- Electronics: DAE4 Sn1643; Calibrated: 2021.12.30
- Phantom: Twin-SAM; Type: QD 000 P41 Ax; Serial: 2020
- Measurement SW: DASY52, Version 52.10 (4); SEMCAD X Version 14.6.14 (7483)

**Ch20300/Area Scan (41x81x1):** Interpolated grid: dx=1.500 mm, dy=1.500 mm

Maximum value of SAR (interpolated) = 1.32 W/kg

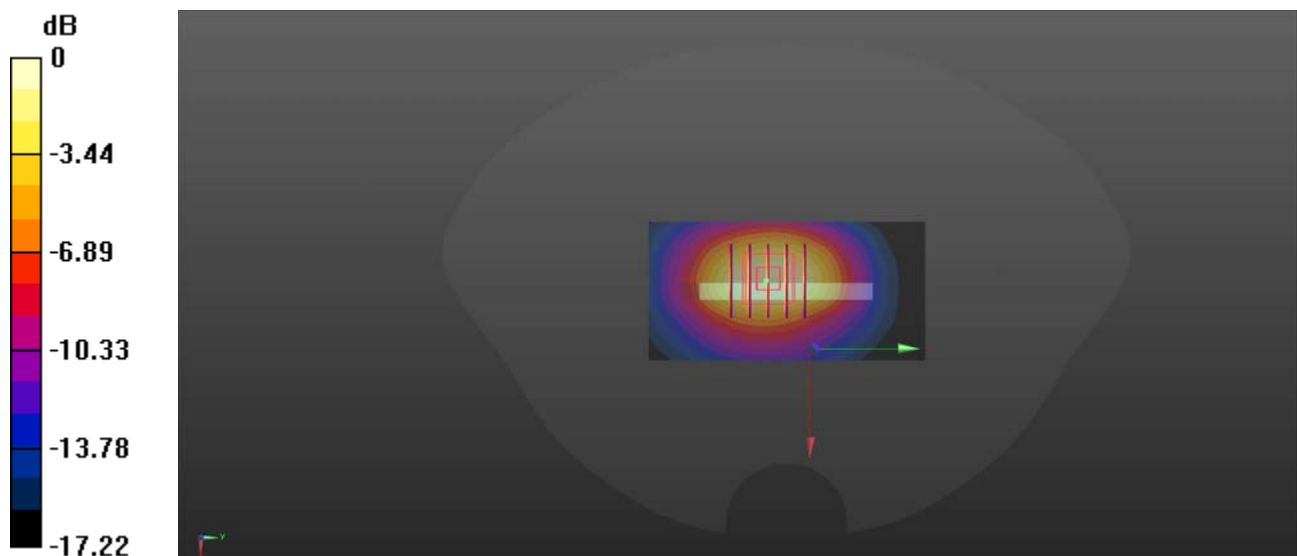
**Ch20300/Zoom Scan (5x5x7)/Cube 0:** Measurement grid: dx=8mm, dy=8mm, dz=5mm

Reference Value = 24.19 V/m; Power Drift = -0.06 dB

Peak SAR (extrapolated) = 1.47 W/kg

**SAR(1 g) = 0.861 W/kg; SAR(10 g) = 0.484 W/kg**

Maximum value of SAR (measured) = 1.18 W/kg



0 dB = 1.18 W/kg

## LTE Band 5\_10MHz\_QPSK\_1RB\_0Offset\_Back Side\_10mm\_Ch20525

Communication System: UID 0, LTE (0); Frequency: 836.5 MHz; Duty Cycle: 1:1

Medium: HSL\_900 Medium parameters used:  $f = 836.5$  MHz;  $\sigma = 0.958$  S/m;  $\epsilon_r = 40.846$ ;  $\rho = 1000$  kg/m<sup>3</sup>

Ambient Temperature : 23.2 °C; Liquid Temperature : 22.2 °C

DASY5 Configuration:

- Probe: EX3DV4 - SN7608; ConvF(9.81, 9.81, 9.81) @ 836.5 MHz; Calibrated: 2022.01.12
- Sensor-Surface: 2mm (Mechanical Surface Detection)
- Electronics: DAE4 Sn1643; Calibrated: 2021.12.30
- Phantom: Twin-SAM; Type: QD 000 P41 Ax; Serial: 2020
- Measurement SW: DASY52, Version 52.10 (4); SEMCAD X Version 14.6.14 (7483)

**Ch20525/Area Scan (71x121x1):** Interpolated grid: dx=1.500 mm, dy=1.500 mm

Maximum value of SAR (interpolated) = 0.379 W/kg

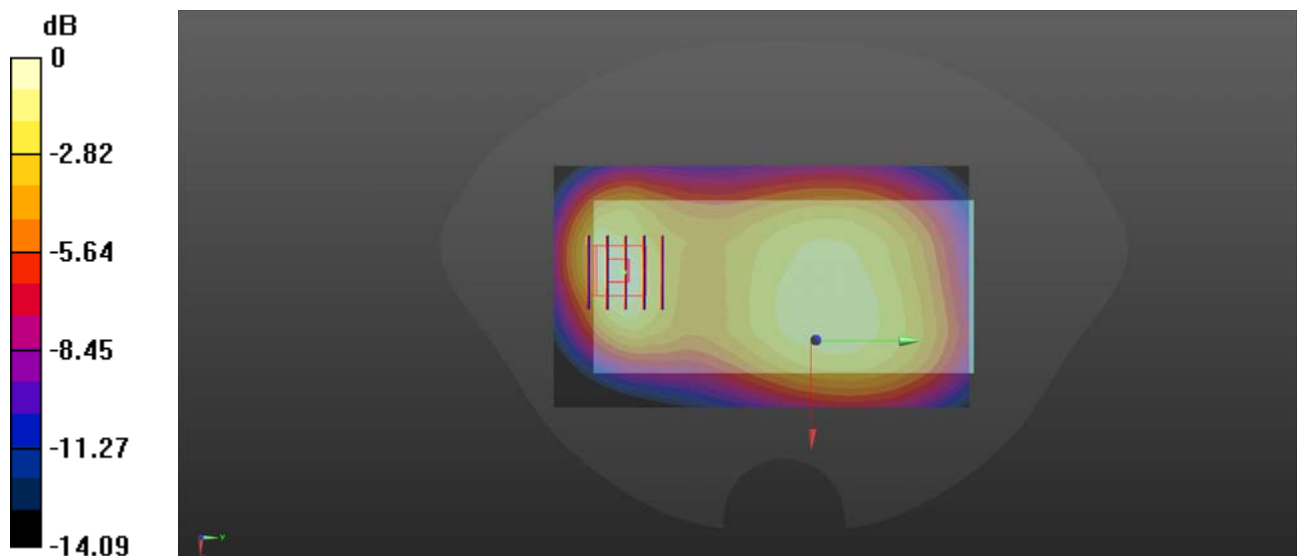
**Ch20525/Zoom Scan (5x5x7)/Cube 0:** Measurement grid: dx=8mm, dy=8mm, dz=5mm

Reference Value = 15.70 V/m; Power Drift = -0.07 dB

Peak SAR (extrapolated) = 0.508 W/kg

**SAR(1 g) = 0.290 W/kg; SAR(10 g) = 0.169 W/kg**

Maximum value of SAR (measured) = 0.382 W/kg



0 dB = 0.382 W/kg

## LTE Band 7\_20MHz\_QPSK\_1RB\_0Offset\_Back Side\_10mm\_Ch21100

Communication System: UID 0, LTE (0); Frequency: 2535 MHz; Duty Cycle: 1:1

Medium: HSL\_2600 Medium parameters used:  $f = 2535$  MHz;  $\sigma = 1.911$  S/m;  $\epsilon_r = 38.489$ ;  $\rho = 1000$  kg/m<sup>3</sup>

Ambient Temperature : 23.2 °C; Liquid Temperature : 22.1 °C

DASY5 Configuration:

- Probe: EX3DV4 - SN7608; ConvF(7.42, 7.42, 7.42) @ 2535 MHz; Calibrated: 2022.01.12
- Sensor-Surface: 2mm (Mechanical Surface Detection)
- Electronics: DAE4 Sn1643; Calibrated: 2021.12.30
- Phantom: Twin-SAM; Type: QD 000 P41 Ax; Serial: 2020
- Measurement SW: DASY52, Version 52.10 (4); SEMCAD X Version 14.6.14 (7483)

**Ch21100/Area Scan (81x101x1):** Interpolated grid: dx=1.200 mm, dy=1.200 mm

Maximum value of SAR (interpolated) = 0.875 W/kg

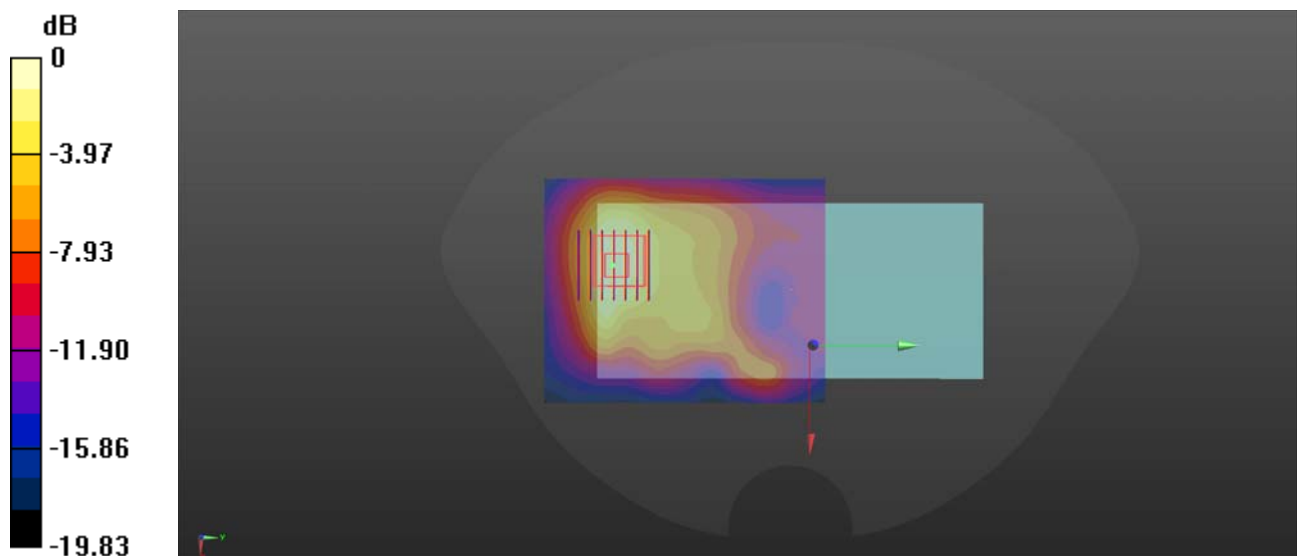
**Ch21100/Zoom Scan (7x7x7)/Cube 0:** Measurement grid: dx=5mm, dy=5mm, dz=5mm

Reference Value = 3.683 V/m; Power Drift = 0.06 dB

Peak SAR (extrapolated) = 1.19 W/kg

**SAR(1 g) = 0.600 W/kg; SAR(10 g) = 0.308 W/kg**

Maximum value of SAR (measured) = 0.876 W/kg



0 dB = 0.876 W/kg

### LTE Band 7\_20MHz\_QPSK\_1RB\_0Offset\_Bottom Side\_10mm\_Ch21100

Communication System: UID 0, LTE (0); Frequency: 2535 MHz; Duty Cycle: 1:1

Medium: HSL\_2600 Medium parameters used:  $f = 2535$  MHz;  $\sigma = 1.911$  S/m;  $\epsilon_r = 38.489$ ;  $\rho = 1000$  kg/m<sup>3</sup>

Ambient Temperature : 23.2 °C; Liquid Temperature : 22.1 °C

DASY5 Configuration:

- Probe: EX3DV4 - SN7608; ConvF(7.08, 7.08, 7.08) @ 2600 MHz; Calibrated: 2022.01.12
- Sensor-Surface: 2mm (Mechanical Surface Detection)
- Electronics: DAE4 Sn1643; Calibrated: 2021.12.30
- Phantom: Twin-SAM; Type: QD 000 P41 Ax; Serial: 2020
- Measurement SW: DASY52, Version 52.10 (4); SEMCAD X Version 14.6.14 (7483)

**Ch21100/Area Scan (51x81x1):** Interpolated grid: dx=1.200 mm, dy=1.200 mm

Maximum value of SAR (interpolated) = 1.02 W/kg

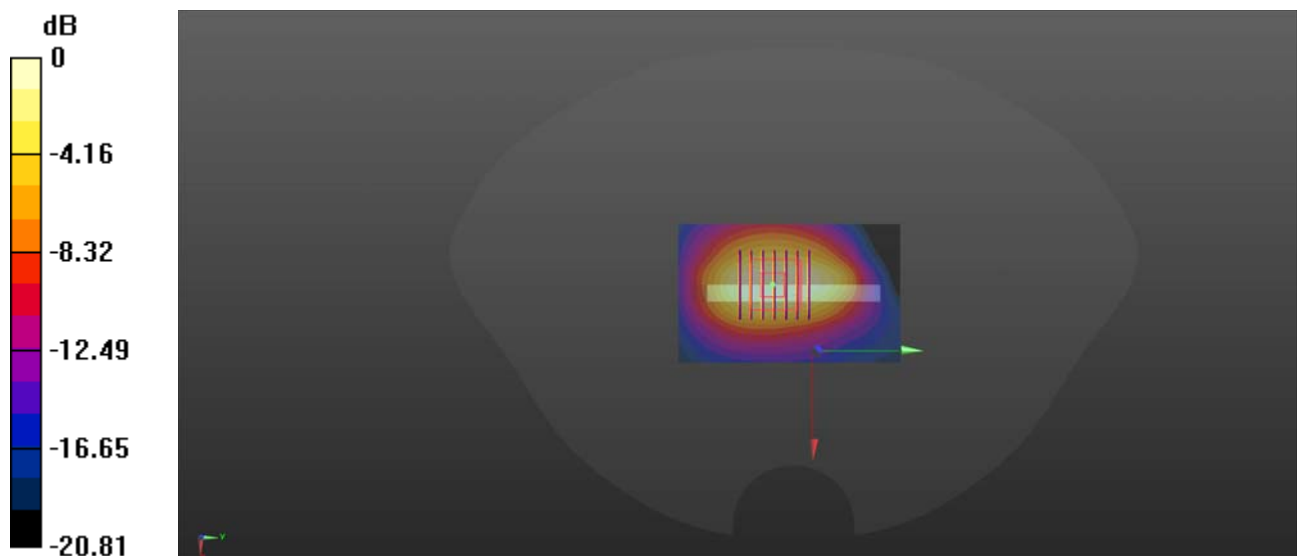
**Ch21100/Zoom Scan (7x7x7)/Cube 0:** Measurement grid: dx=5mm, dy=5mm, dz=5mm

Reference Value = 18.33 V/m; Power Drift = -0.09 dB

Peak SAR (extrapolated) = 1.22 W/kg

**SAR(1 g) = 0.626 W/kg; SAR(10 g) = 0.317 W/kg**

Maximum value of SAR (measured) = 0.920 W/kg



0 dB = 0.920 W/kg

### LTE Band 13\_10MHz\_QPSK\_1RB\_0Offset\_Back Side\_10mm\_Ch23230

Communication System: UID 0, LTE (0); Frequency: 782 MHz; Duty Cycle: 1:1

Medium: HSL\_750 Medium parameters used:  $f = 782 \text{ MHz}$ ;  $\sigma = 0.932 \text{ S/m}$ ;  $\epsilon_r = 40.959$ ;  $\rho = 1000 \text{ kg/m}^3$

Ambient Temperature :  $23.2 \text{ }^\circ\text{C}$ ; Liquid Temperature :  $22.2 \text{ }^\circ\text{C}$

DASY5 Configuration:

- Probe: EX3DV4 - SN7608; ConvF(10.2, 10.2, 10.2) @ 782 MHz; Calibrated: 2022.01.12
- Sensor-Surface: 2mm (Mechanical Surface Detection)
- Electronics: DAE4 Sn1643; Calibrated: 2021.12.30
- Phantom: Twin-SAM; Type: QD 000 P41 Ax; Serial: 2020
- Measurement SW: DASY52, Version 52.10 (4); SEMCAD X Version 14.6.14 (7483)

**Ch23230/Area Scan (71x121x1):** Interpolated grid:  $dx=1.500 \text{ mm}$ ,  $dy=1.500 \text{ mm}$

Maximum value of SAR (interpolated) =  $0.312 \text{ W/kg}$

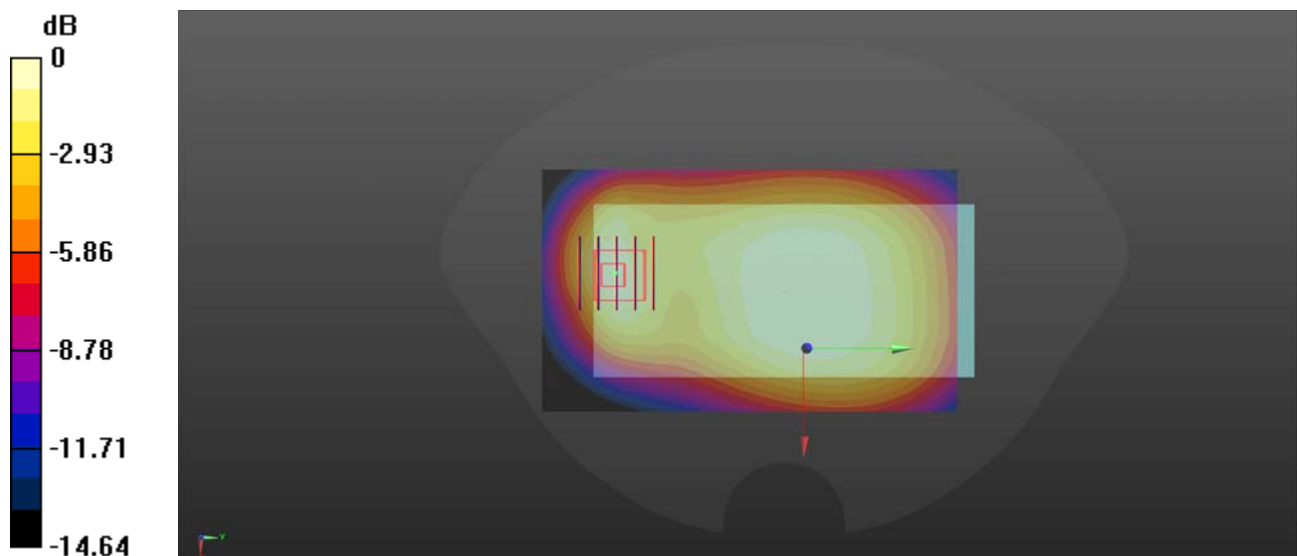
**Ch23230/Zoom Scan (5x5x7)/Cube 0:** Measurement grid:  $dx=8\text{mm}$ ,  $dy=8\text{mm}$ ,  $dz=5\text{mm}$

Reference Value =  $17.37 \text{ V/m}$ ; Power Drift =  $-0.07 \text{ dB}$

Peak SAR (extrapolated) =  $0.383 \text{ W/kg}$

**SAR(1 g) =  $0.213 \text{ W/kg}$ ; SAR(10 g) =  $0.124 \text{ W/kg}$**

Maximum value of SAR (measured) =  $0.297 \text{ W/kg}$



0 dB =  $0.297 \text{ W/kg}$

## LTE Band 38\_20MHz\_QPSK\_1RB\_0Offset\_Back Side\_10mm\_Ch38000

Communication System: UID 0, LTE (0); Frequency: 2595 MHz; Duty Cycle: 1:1.59

Medium: HSL\_2600 Medium parameters used:  $f = 2595$  MHz;  $\sigma = 1.98$  S/m;  $\epsilon_r = 38.287$ ;  $\rho = 1000$  kg/m<sup>3</sup>

Ambient Temperature : 23.2 °C; Liquid Temperature : 22.3 °C

DASY5 Configuration:

- Probe: EX3DV4 - SN7608; ConvF(7.08, 7.08, 7.08) @ 2595 MHz; Calibrated: 2022.01.12
- Sensor-Surface: 2mm (Mechanical Surface Detection)
- Electronics: DAE4 Sn1643; Calibrated: 2021.12.30
- Phantom: Twin-SAM; Type: QD 000 P41 Ax; Serial: 2020
- Measurement SW: DASY52, Version 52.10 (4); SEMCAD X Version 14.6.14 (7483)

**Ch38000/Area Scan (81x101x1):** Interpolated grid: dx=1.200 mm, dy=1.200 mm

Maximum value of SAR (interpolated) = 1.71 W/kg

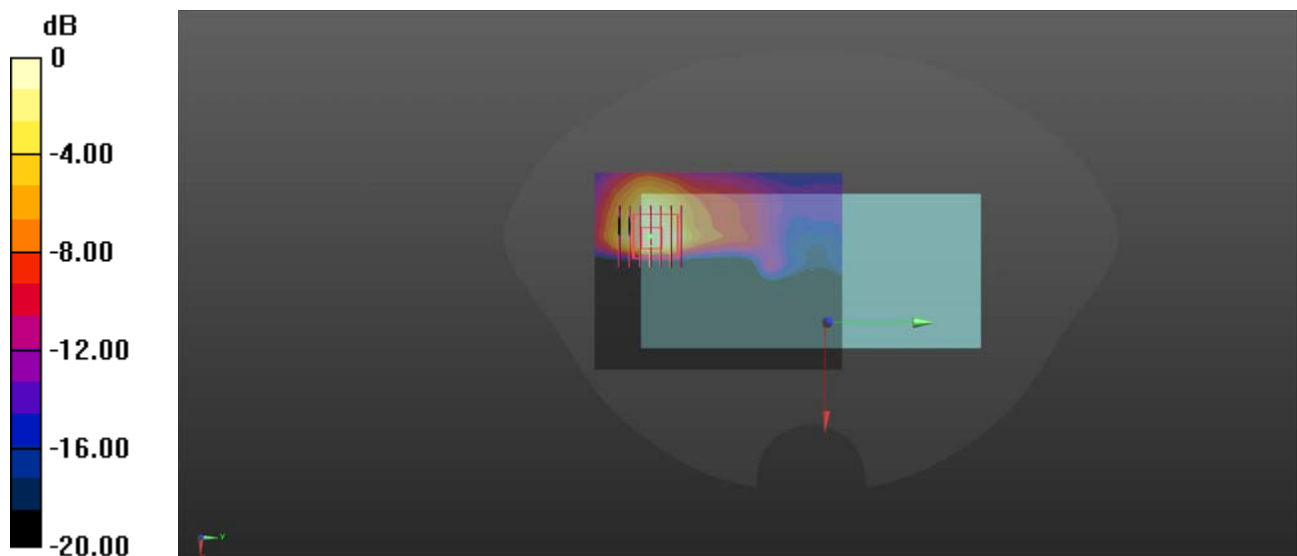
**Ch38000/Zoom Scan (7x7x7)/Cube 0:** Measurement grid: dx=5mm, dy=5mm, dz=5mm

Reference Value = 0 V/m; Power Drift = 0.06 dB

Peak SAR (extrapolated) = 1.18 W/kg

**SAR(1 g) = 0.600 W/kg; SAR(10 g) = 0.291 W/kg**

Maximum value of SAR (measured) = 0.853 W/kg



0 dB = 0.853 W/kg



## LTE Band 38\_20MHz\_QPSK\_1RB\_0Offset\_Bottom Side\_10mm\_Ch38000

Communication System: UID 0, LTE (0); Frequency: 2595 MHz; Duty Cycle: 1:1.59

Medium: HSL\_2600 Medium parameters used:  $f = 2595$  MHz;  $\sigma = 1.98$  S/m;  $\epsilon_r = 38.287$ ;  $\rho = 1000$  kg/m<sup>3</sup>

Ambient Temperature : 23.2 °C; Liquid Temperature : 22.3 °C

DASY5 Configuration:

- Probe: EX3DV4 - SN7608; ConvF(7.08, 7.08, 7.08) @ 2595 MHz; Calibrated: 2022.01.12
- Sensor-Surface: 2mm (Mechanical Surface Detection)
- Electronics: DAE4 Sn1643; Calibrated: 2021.12.30
- Phantom: Twin-SAM; Type: QD 000 P41 Ax; Serial: 2020
- Measurement SW: DASY52, Version 52.10 (4); SEMCAD X Version 14.6.14 (7483)

**Ch38000/Area Scan (41x91x1):** Interpolated grid: dx=1.200 mm, dy=1.200 mm

Maximum value of SAR (interpolated) = 1.11 W/kg

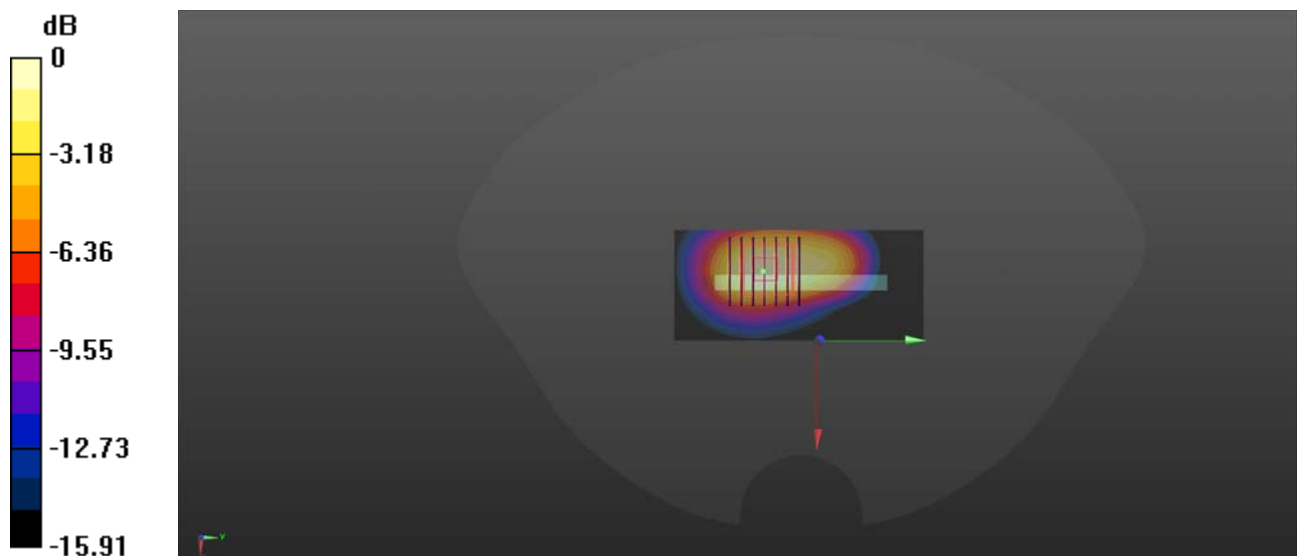
**Ch38000/Zoom Scan (7x7x7)/Cube 0:** Measurement grid: dx=5mm, dy=5mm, dz=5mm

Reference Value = 14.73 V/m; Power Drift = 0.01 dB

Peak SAR (extrapolated) = 1.37 W/kg

**SAR(1 g) = 0.634 W/kg; SAR(10 g) = 0.344 W/kg**

Maximum value of SAR (measured) = 1.04 W/kg



0 dB = 1.04 W/kg

## LTE Band 41\_20MHz\_QPSK\_1RB\_0Offset\_Back Side\_10mm\_Ch40640

Communication System: UID 0, LTE (0); Frequency: 2595 MHz; Duty Cycle: 1:1.59

Medium: HSL\_2600 Medium parameters used:  $f = 2595$  MHz;  $\sigma = 1.98$  S/m;  $\epsilon_r = 38.287$ ;  $\rho = 1000$  kg/m<sup>3</sup>

Ambient Temperature : 23.2 °C; Liquid Temperature : 22.1 °C

DASY5 Configuration:

- Probe: EX3DV4 - SN7608; ConvF(7.08, 7.08, 7.08) @ 2595 MHz; Calibrated: 2022.01.12
- Sensor-Surface: 2mm (Mechanical Surface Detection)
- Electronics: DAE4 Sn1643; Calibrated: 2021.12.30
- Phantom: Twin-SAM; Type: QD 000 P41 Ax; Serial: 2020
- Measurement SW: DASY52, Version 52.10 (4); SEMCAD X Version 14.6.14 (7483)

**Ch40640/Area Scan (81x101x1):** Interpolated grid: dx=1.200 mm, dy=1.200 mm

Maximum value of SAR (interpolated) = 0.599 W/kg

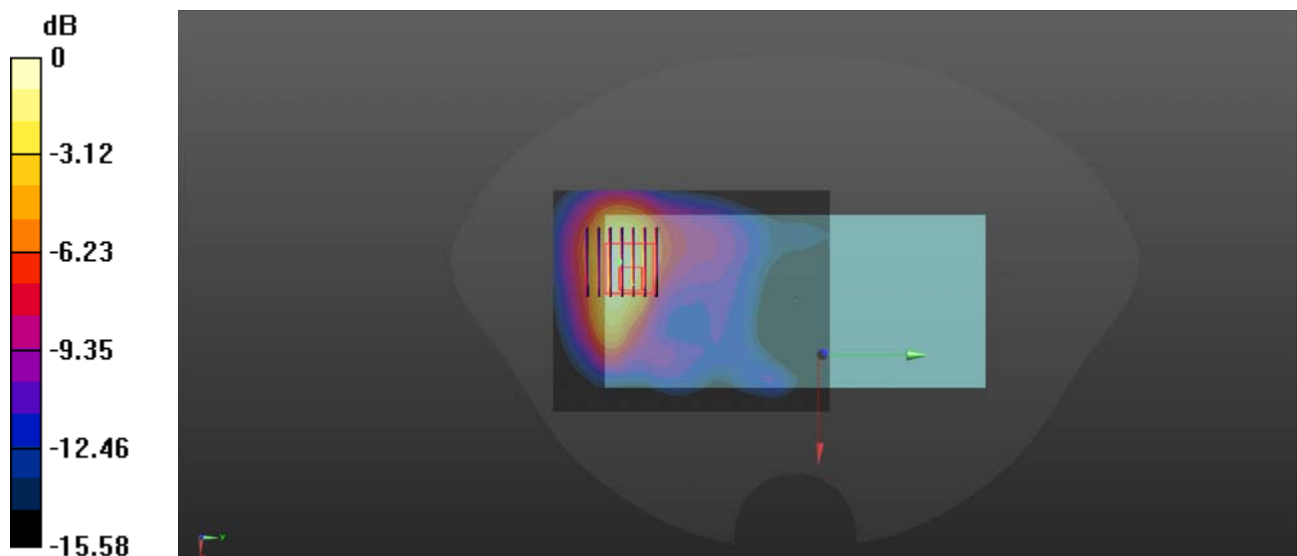
**Ch40640/Zoom Scan (7x7x7)/Cube 0:** Measurement grid: dx=5mm, dy=5mm, dz=5mm

Reference Value = 0 V/m; Power Drift = 0.03 dB

Peak SAR (extrapolated) = 0.814 W/kg

**SAR(1 g) = 0.459 W/kg; SAR(10 g) = 0.241 W/kg**

Maximum value of SAR (measured) = 0.629 W/kg



0 dB = 0.629 W/kg

## LTE Band 41\_20MHz\_QPSK\_1RB\_0Offset\_Bottom Side\_10mm\_Ch40640

Communication System: UID 0, LTE (0); Frequency: 2595 MHz; Duty Cycle: 1:1.59

Medium: HSL\_2600 Medium parameters used:  $f = 2595$  MHz;  $\sigma = 1.98$  S/m;  $\epsilon_r = 38.287$ ;  $\rho = 1000$  kg/m<sup>3</sup>

Ambient Temperature : 23.2 °C; Liquid Temperature : 22.3 °C

DASY5 Configuration:

- Probe: EX3DV4 - SN7608; ConvF(7.08, 7.08, 7.08) @ 2595 MHz; Calibrated: 2022.01.12
- Sensor-Surface: 2mm (Mechanical Surface Detection)
- Electronics: DAE4 Sn1643; Calibrated: 2021.12.30
- Phantom: Twin-SAM; Type: QD 000 P41 Ax; Serial: 2020
- Measurement SW: DASY52, Version 52.10 (4); SEMCAD X Version 14.6.14 (7483)

**Ch40640/Area Scan (51x81x1):** Interpolated grid: dx=1.200 mm, dy=1.200 mm

Maximum value of SAR (interpolated) = 0.785 W/kg

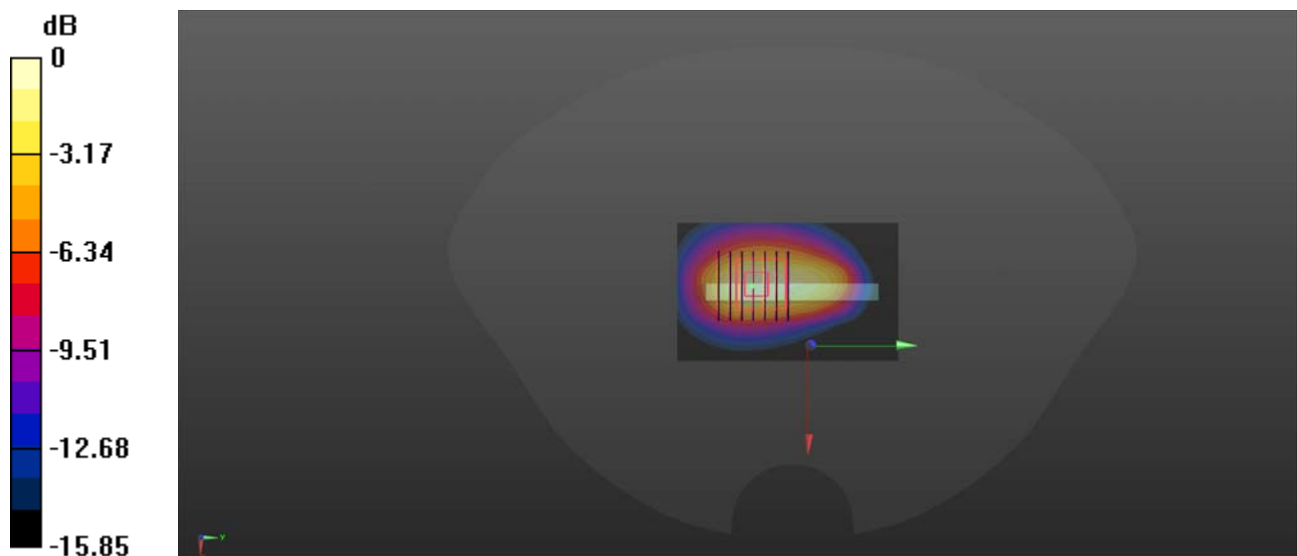
**Ch40640/Zoom Scan (7x7x7)/Cube 0:** Measurement grid: dx=5mm, dy=5mm, dz=5mm

Reference Value = 14.87 V/m; Power Drift = -0.07 dB

Peak SAR (extrapolated) = 1.00 W/kg

**SAR(1 g) = 0.505 W/kg; SAR(10 g) = 0.246 W/kg**

Maximum value of SAR (measured) = 0.750 W/kg



0 dB = 0.750 W/kg

## LTE Band 66\_20MHz\_QPSK\_1RB\_0Offset\_Back Side\_10mm\_Ch132322

Communication System: UID 0, LTE (0); Frequency: 1745 MHz; Duty Cycle: 1:1

Medium: HSL\_1800 Medium parameters used:  $f = 1745$  MHz;  $\sigma = 1.382$  S/m;  $\epsilon_r = 41.164$ ;  $\rho = 1000$  kg/m<sup>3</sup>

Ambient Temperature : 23.2 °C; Liquid Temperature : 22.2 °C

DASY5 Configuration:

- Probe: EX3DV4 - SN7608; ConvF(8.26, 8.26, 8.26) @ 1745 MHz; Calibrated: 2022.01.12
- Sensor-Surface: 2mm (Mechanical Surface Detection)
- Electronics: DAE4 Sn1643; Calibrated: 2021.12.30
- Phantom: Twin-SAM; Type: QD 000 P41 Ax; Serial: 2020
- Measurement SW: DASY52, Version 52.10 (4); SEMCAD X Version 14.6.14 (7483)

**Ch132322/Area Scan (71x81x1):** Interpolated grid: dx=1.500 mm, dy=1.500 mm

Maximum value of SAR (interpolated) = 1.11 W/kg

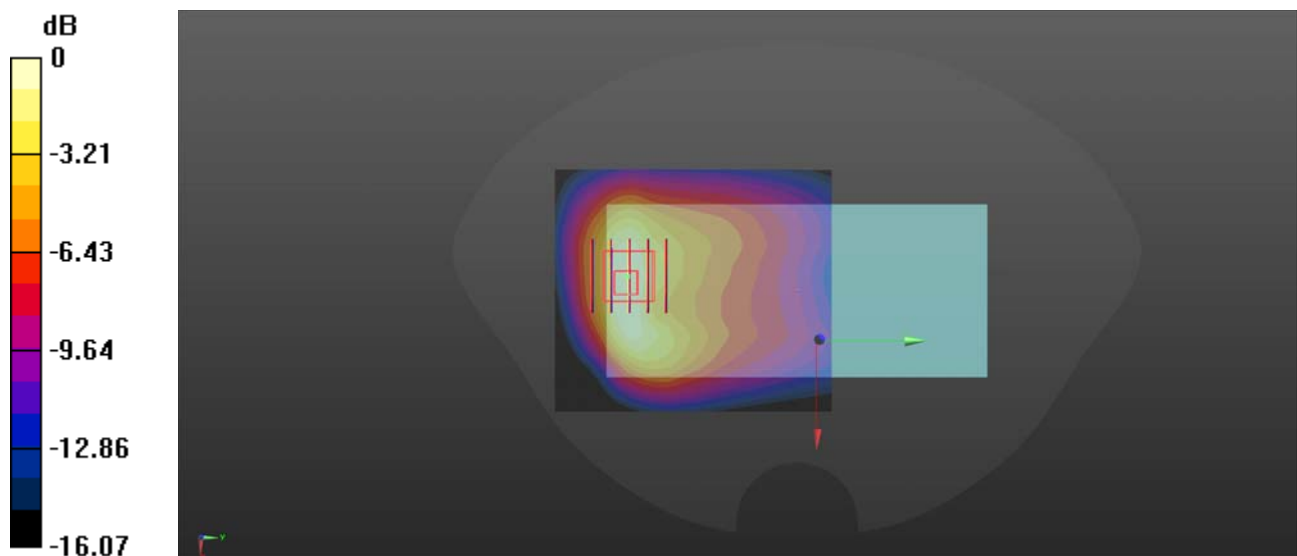
**Ch132322/Zoom Scan (5x5x7)/Cube 0:** Measurement grid: dx=8mm, dy=8mm, dz=5mm

Reference Value = 8.195 V/m; Power Drift = 0.04 dB

Peak SAR (extrapolated) = 1.29 W/kg

**SAR(1 g) = 0.482 W/kg; SAR(10 g) = 0.341 W/kg**

Maximum value of SAR (measured) = 1.05 W/kg



0 dB = 1.05 W/kg

## LTE Band 66\_20MHz\_QPSK\_1RB\_0Offset\_Bottom Side\_10mm\_Ch132572

Communication System: UID 0, LTE (0); Frequency: 1770 MHz; Duty Cycle: 1:1

Medium: HSL\_1800 Medium parameters used:  $f = 1770$  MHz;  $\sigma = 1.413$  S/m;  $\epsilon_r = 41.194$ ;  $\rho = 1000$  kg/m<sup>3</sup>

Ambient Temperature : 23.2 °C; Liquid Temperature : 22.2 °C

DASY5 Configuration:

- Probe: EX3DV4 - SN7608; ConvF(8.26, 8.26, 8.26) @ 1770 MHz; Calibrated: 2022.01.12
- Sensor-Surface: 2mm (Mechanical Surface Detection)
- Electronics: DAE4 Sn1643; Calibrated: 2021.12.30
- Phantom: Twin-SAM; Type: QD 000 P41 Ax; Serial: 2020
- Measurement SW: DASY52, Version 52.10 (4); SEMCAD X Version 14.6.14 (7483)

**Ch132572/Area Scan (41x81x1):** Interpolated grid: dx=1.500 mm, dy=1.500 mm

Maximum value of SAR (interpolated) = 1.17 W/kg

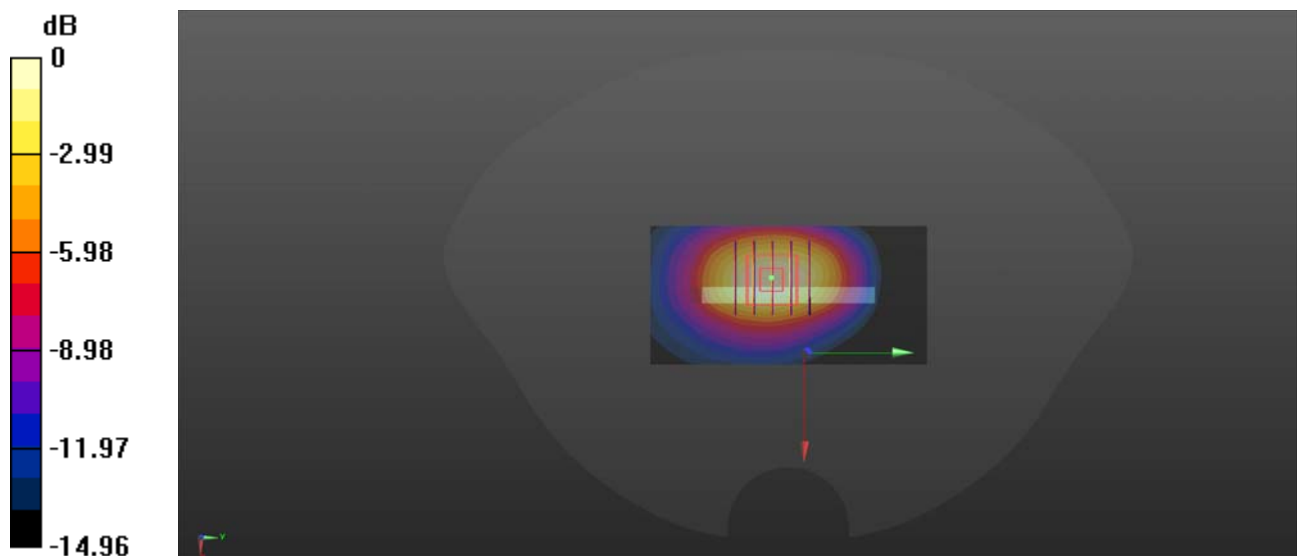
**Ch132572/Zoom Scan (5x5x7)/Cube 0:** Measurement grid: dx=8mm, dy=8mm, dz=5mm

Reference Value = 21.26 V/m; Power Drift = -0.08 dB

Peak SAR (extrapolated) = 1.27 W/kg

**SAR(1 g) = 0.777 W/kg; SAR(10 g) = 0.441 W/kg**

Maximum value of SAR (measured) = 1.05 W/kg



0 dB = 1.05 W/kg

## WLAN 2.4GHz\_802.11b 1Mbps\_Back Side\_10mm\_Ch1

Communication System: UID 0, WLAN 2.4GHz 802.11b (0); Frequency: 2412 MHz; Duty Cycle: 1:1  
Medium: HSL\_2450 Medium parameters used:  $f = 2412$  MHz;  $\sigma = 1.762$  S/m;  $\epsilon_r = 38.862$ ;  $\rho = 1000$  kg/m<sup>3</sup>

Ambient Temperature : 23.2 °C; Liquid Temperature : 22.1 °C

### DASY5 Configuration:

- Probe: EX3DV4 - SN7608; ConvF(7.42, 7.42, 7.42) @ 2412 MHz; Calibrated: 2022.01.12
- Sensor-Surface: 2mm (Mechanical Surface Detection)
- Electronics: DAE4 Sn1643; Calibrated: 2021.12.30
- Phantom: Twin-SAM; Type: QD 000 P41 Ax; Serial: 2020
- Measurement SW: DASY52, Version 52.10 (4); SEMCAD X Version 14.6.14 (7483)

**Ch1/Area Scan (81x101x1):** Interpolated grid: dx=1.200 mm, dy=1.200 mm

Maximum value of SAR (interpolated) = 0.582 W/kg

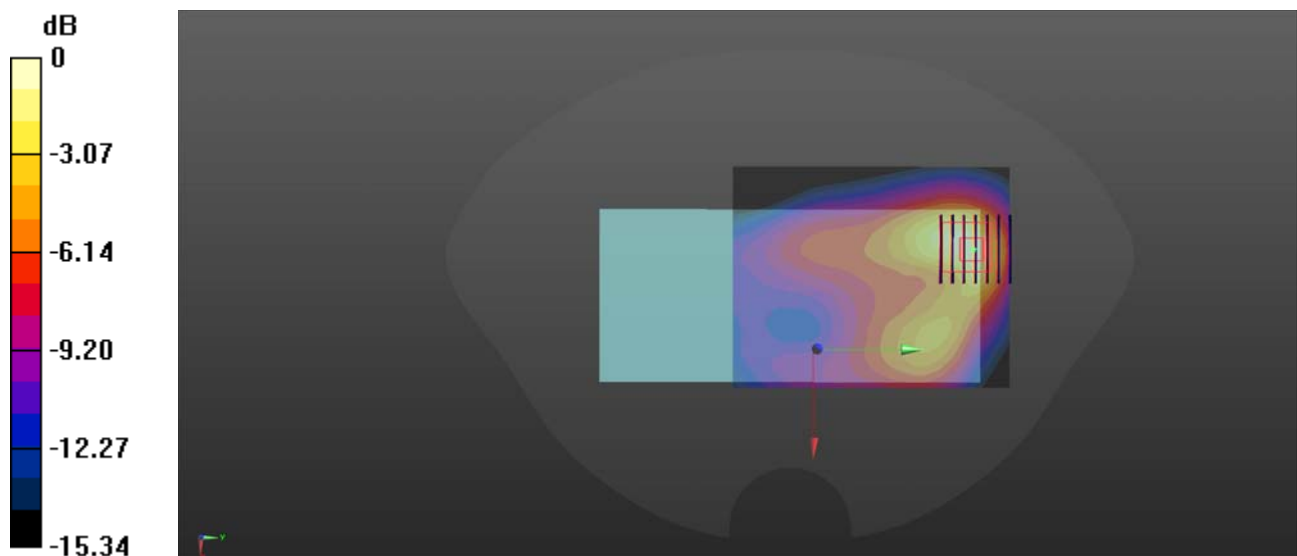
**Ch1/Zoom Scan (7x7x7)/Cube 0:** Measurement grid: dx=5mm, dy=5mm, dz=5mm

Reference Value = 4.105 V/m; Power Drift = 0.05 dB

Peak SAR (extrapolated) = 0.766 W/kg

**SAR(1 g) = 0.378 W/kg; SAR(10 g) = 0.184 W/kg**

Maximum value of SAR (measured) = 0.565 W/kg



0 dB = 0.565 W/kg

## Bluetooth\_DH5\_Back Side\_10mm\_Ch39

Communication System: UID 0, Bluetooth (0); Frequency: 2441 MHz; Duty Cycle: 1:1.295  
Medium: HSL\_2450 Medium parameters used:  $f = 2441$  MHz;  $\sigma = 1.807$  S/m;  $\epsilon_r = 38.83$ ;  $\rho = 1000$  kg/m<sup>3</sup>  
Ambient Temperature : 23.2 °C; Liquid Temperature : 22.1 °C

### DASY5 Configuration:

- Probe: EX3DV4 - SN7608; ConvF(7.42, 7.42, 7.42) @ 2441 MHz; Calibrated: 2022.01.12
- Sensor-Surface: 2mm (Mechanical Surface Detection)
- Electronics: DAE4 Sn1643; Calibrated: 2021.12.30
- Phantom: Twin-SAM; Type: QD 000 P41 Ax; Serial: 2020
- Measurement SW: DASY52, Version 52.10 (4); SEMCAD X Version 14.6.14 (7483)

**Ch39/Area Scan (81x101x1):** Interpolated grid: dx=1.200 mm, dy=1.200 mm  
Maximum value of SAR (interpolated) = 0.0639 W/kg

**Ch39/Zoom Scan (7x7x7)/Cube 0:** Measurement grid: dx=5mm, dy=5mm, dz=5mm  
Reference Value = 0.9510 V/m; Power Drift = 0.01 dB  
Peak SAR (extrapolated) = 0.0880 W/kg  
**SAR(1 g) = 0.043 W/kg; SAR(10 g) = 0.020 W/kg**  
Maximum value of SAR (measured) = 0.0658 W/kg

