

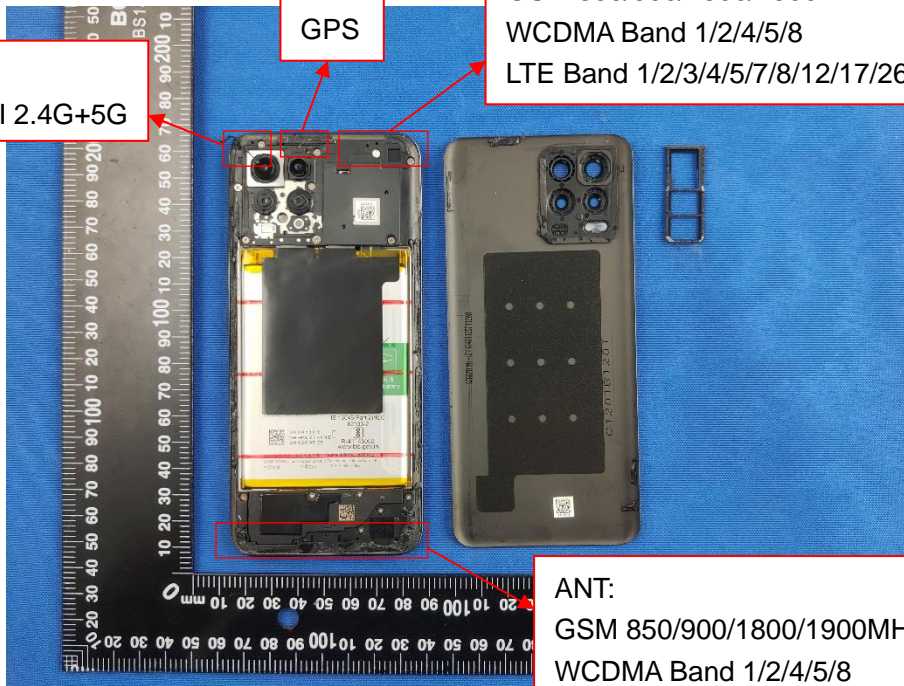
EUT INTERNAL PHOTOS

EUT UNCOVER VIEW

ANT:
BT+WIFI 2.4G+5G

GPS

ANT:
GSM 850/900/1800/1900MHz
WCDMA Band 1/2/4/5/8
LTE Band 1/2/3/4/5/7/8/12/17/26/28/66/38/41



ANT:
GSM 850/900/1800/1900MHz
WCDMA Band 1/2/4/5/8
LTE Band 1/2/3/4/5/7/8/12/17/26/28/66/38/41

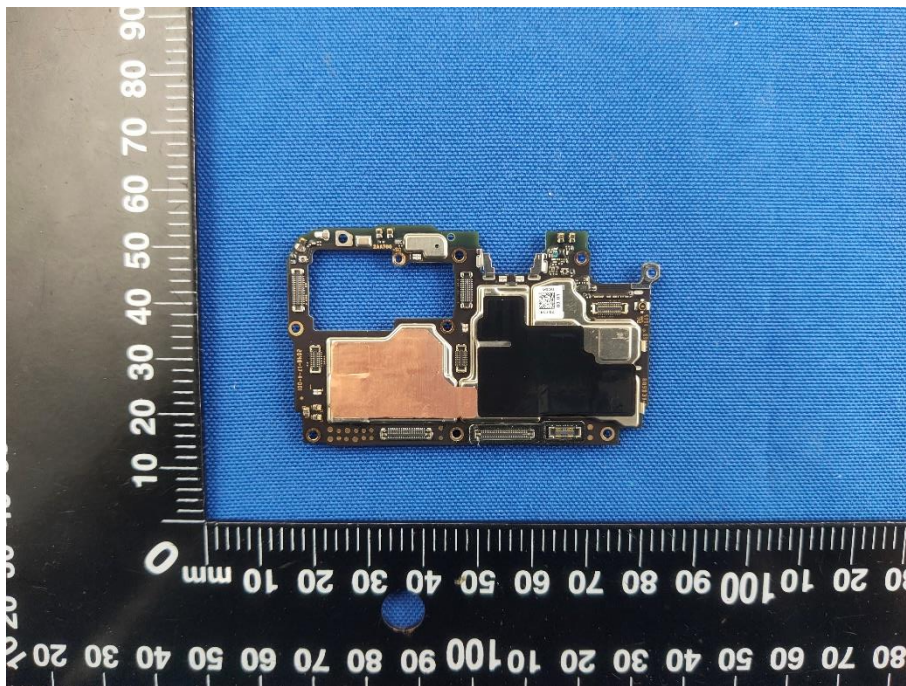
EUT UNCOVER VIEW



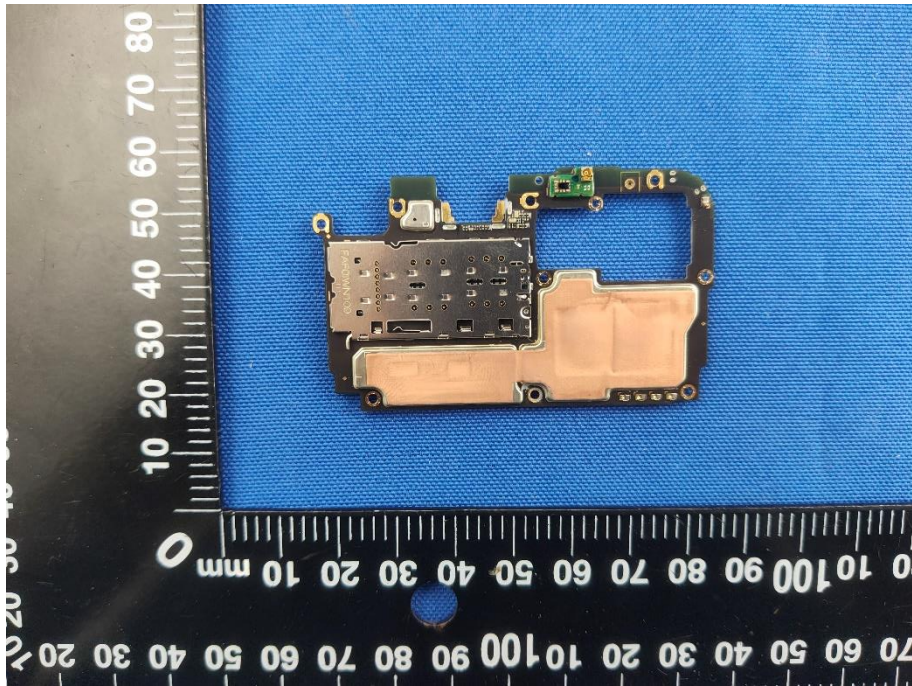
EUT UNCOVER VIEW



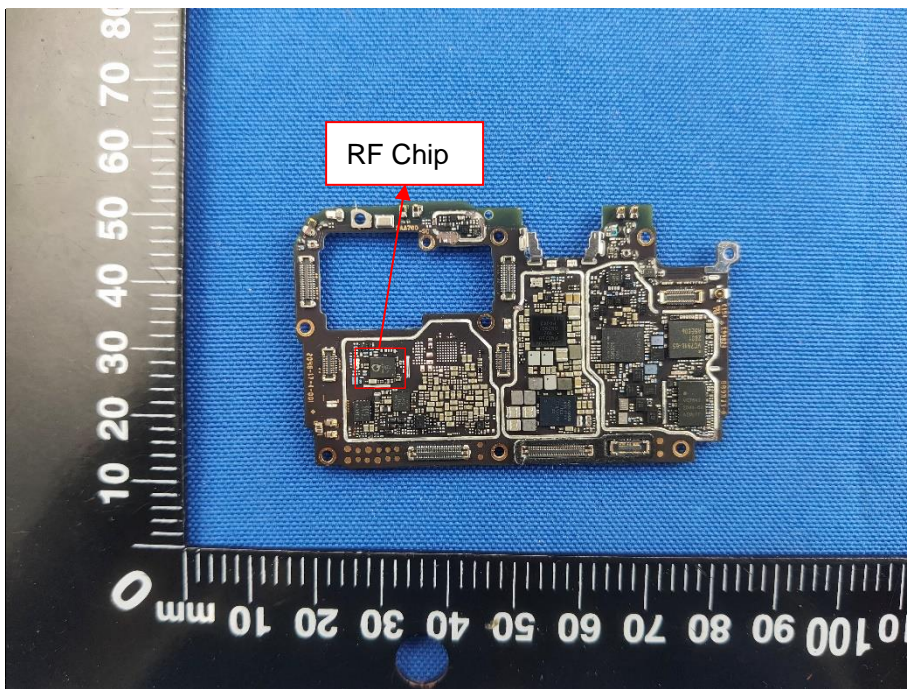
MAIN BOARD TOP VIEW (WITH SHIELDING)



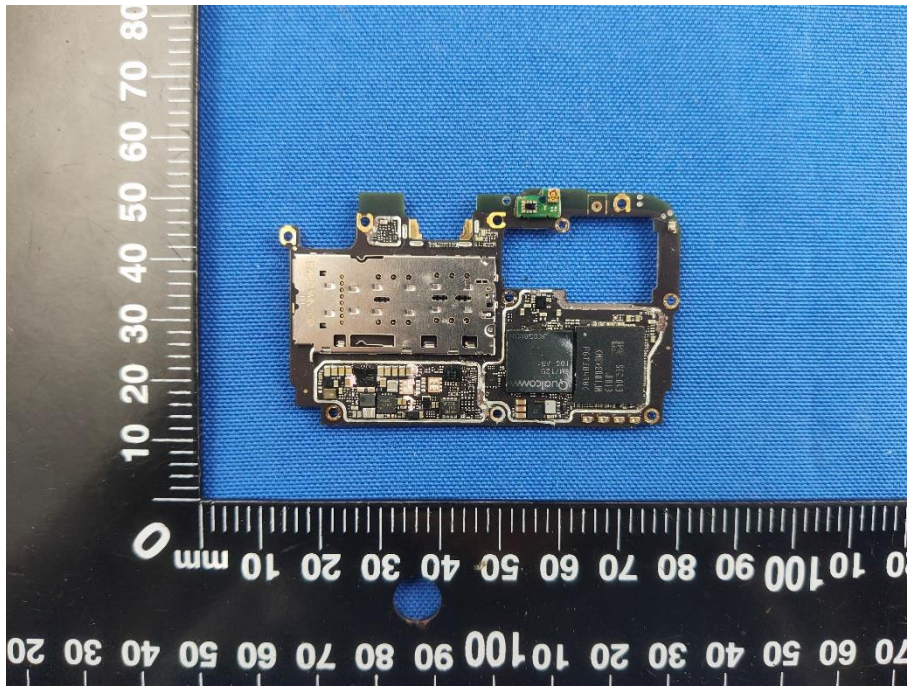
MAIN BOARD REAR VIEW (WITH SHIELDING)



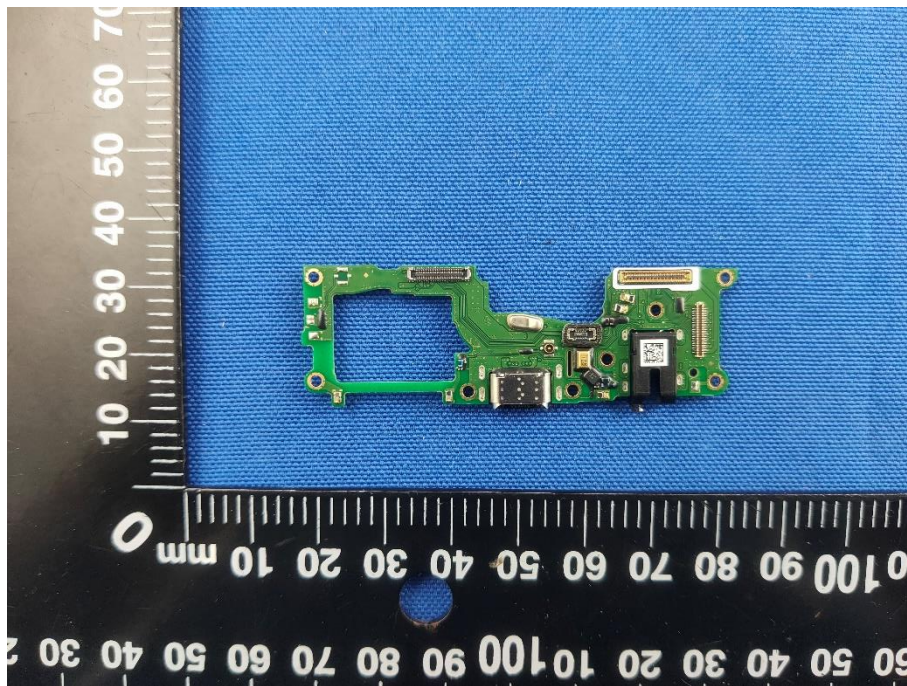
MAIN BOARD TOP VIEW (WITHOUT SHIELDING)



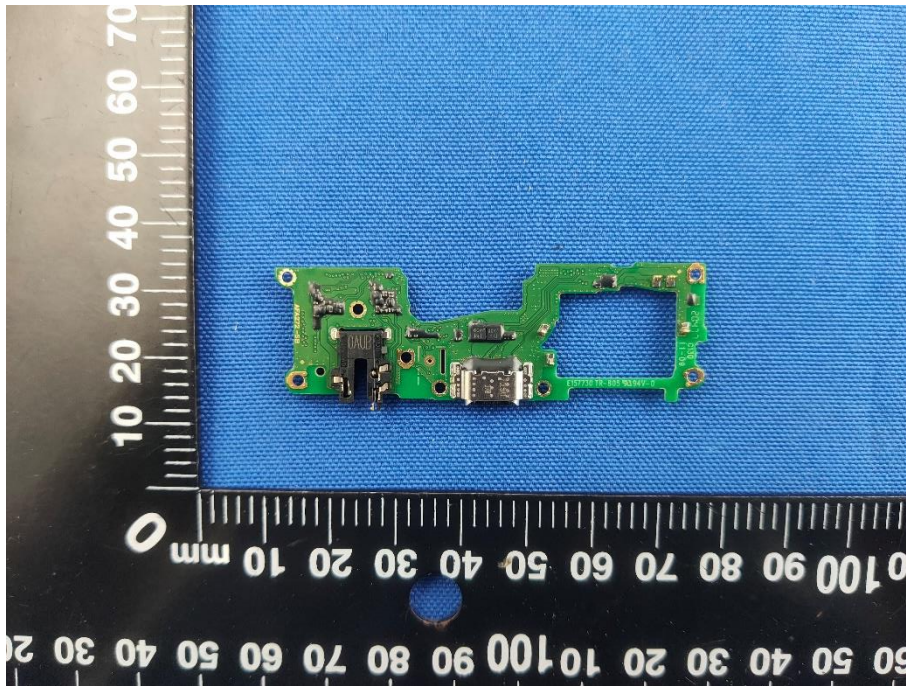
MAIN BOARD REAR VIEW (WITHOUT SHIELDING)



SUB BOARD TOP VIEW



SUB BOARD REAR VIEW



Battery Photo (FRONT)



Battery Photo (REAR)

