



REPORT No.: SZ22010233S01

Annex G Simultaneous Transmission Assessment

Simultaneous Transmission for WWAN+WLAN/Bluetooth

WWAN Band	Exposure Position	1	2	3	4	1+2 Summed 1g SAR (W/kg)	1+3+4 Summed 1g SAR (W/kg)
		LTE	2.4GHz WLAN	5GHz WLAN	Bluetooth		
		1g SAR (W/kg)	1g SAR (W/kg)	1g SAR (W/kg)	1g SAR (W/kg)		
GSM 850	Bottom Face at 23mm	0.641	0.534	0.531	0.026	1.175	1.198
	Edge 1 at 23mm	0.287	0.241	0.979	0.021	0.528	1.287
	Edge 2 at 0mm	0.114	0.143			0.257	0.114
	Edge 3 at 0mm	0.028				0.028	0.028
	Edge 4 at 10mm	0.123	0.159			0.282	0.123
	Bottom Face at 0mm	0.753	0.250	0.778	0.182	1.003	1.713
	Edge 1 at 0mm	0.742	0.600	0.922	0.307	1.342	1.971
	Edge 2 at 0mm	0.090				0.090	0.090
	Edge 3 at 0mm	0.028				0.028	0.028
	Edge 4 at 0mm	0.502				0.502	0.502
GSM 1900	Bottom Face at 23mm	0.372	0.534	0.531	0.026	0.906	0.929
	Edge 1 at 23mm	0.213	0.241	0.979	0.021	0.454	1.213
	Edge 2 at 0mm	0.107	0.143	0.378		0.250	0.485
	Edge 4 at 10mm	0.084	0.159			0.243	0.084
	Bottom Face at 0mm	0.700	0.250	0.778	0.182	0.950	1.660
	Edge 1 at 0mm	0.557	0.600	0.922	0.307	1.157	1.786
	Edge 2 at 0mm	0.094				0.094	0.094
	Edge 4 at 0mm	0.231				0.231	0.231
WCDMA II	Bottom Face at 23mm	0.643	0.534	0.531	0.026	1.177	1.200
	Edge 1 at 23mm	0.554	0.241	0.979	0.021	0.795	1.554
	Edge 2 at 0mm		0.143	0.378		0.143	0.378
	Edge 4 at 10mm	0.114	0.159			0.273	0.114
	Bottom Face at 0mm	0.719	0.250	0.778	0.182	0.969	1.679
	Edge 1 at 0mm	0.777	0.600	0.922	0.307	1.377	2.006
	Edge 2 at 0mm					0.000	0.000
	Edge 4 at 0mm	0.271				0.271	0.271
WCDMA IV	Bottom Face at 23mm	0.714	0.534	0.531	0.026	1.248	1.271
	Edge 1 at 23mm	0.312	0.241	0.979	0.021	0.553	1.312
	Edge 2 at 0mm		0.143	0.378		0.143	0.378
	Edge 4 at 10mm	0.115	0.159			0.274	0.115
	Bottom Face at 0mm	0.765	0.250	0.778	0.182	1.015	1.725
	Edge 1 at 0mm	0.835	0.600	0.922	0.307	1.435	2.064
	Edge 2 at 0mm					0.000	0.000
	Edge 4 at 0mm	0.266				0.266	0.266
WCDMA V	Bottom Face at 23mm	0.448	0.534	0.531	0.026	0.982	1.005
	Edge 1 at 23mm	0.176	0.241	0.979	0.021	0.417	1.176
	Edge 2 at 0mm		0.143	0.378		0.143	0.378
	Edge 4 at 10mm	0.168	0.159			0.327	0.168
	Bottom Face at 0mm	1.141	0.250	0.778	0.182	1.391	2.101
	Edge 1 at 0mm	0.288	0.600	0.922	0.307	0.888	1.517
	Edge 2 at 0mm					0.000	0.000
	Edge 4 at 0mm	0.243				0.243	0.243
	Bottom Face at 23mm	0.629	0.534	0.531	0.026	1.163	1.186
	Edge 1 at 23mm	0.312	0.241	0.979	0.021	0.553	1.312
	Edge 2 at 0mm		0.143	0.378		0.143	0.378

LTE Band 4	Bottom Face at 0mm	0.504	0.250	0.778	0.182	0.754	1.464
	Edge 1 at 0mm	0.727	0.600	0.922	0.307	1.327	1.956
	Edge 2 at 0mm					0.000	0.000
	Edge 4 at 0mm	0.200				0.200	0.200
LTE Band 4	Bottom Face at 23mm	0.542	0.534	0.531	0.026	1.076	1.099
	Edge 1 at 23mm	0.401	0.241	0.979	0.021	0.642	1.401
	Edge 2 at 0mm		0.143	0.378		0.143	0.378
	Edge 4 at 10mm	0.234	0.159			0.393	0.234
	Bottom Face at 0mm	0.382	0.250	0.778	0.182	0.632	1.342
	Edge 1 at 0mm	0.473	0.600	0.922	0.307	1.073	1.702
	Edge 2 at 0mm					0.000	0.000
	Edge 4 at 0mm	0.454				0.454	0.454
LTE Band 5	Bottom Face at 23mm	0.519	0.534	0.531	0.026	1.053	1.076
	Edge 1 at 23mm	0.181	0.241	0.979	0.021	0.422	1.181
	Edge 2 at 0mm		0.143	0.378		0.143	0.378
	Edge 4 at 10mm	0.241	0.159			0.400	0.241
	Bottom Face at 0mm	0.730	0.250	0.778	0.182	0.980	1.690
	Edge 1 at 0mm	0.515	0.600	0.922	0.307	1.115	1.744
	Edge 2 at 0mm					0.000	0.000
	Edge 4 at 0mm	0.572				0.572	0.572
LTE Band 7	Bottom Face at 23mm	0.524	0.534	0.531	0.026	1.058	1.081
	Edge 1 at 23mm	0.220	0.241	0.979	0.021	0.461	1.220
	Edge 2 at 0mm		0.143	0.378		0.143	0.378
	Edge 4 at 10mm	0.632	0.159			0.791	0.632
	Bottom Face at 0mm	0.536	0.250	0.778	0.182	0.786	1.496
	Edge 1 at 0mm	0.439	0.600	0.922	0.307	1.039	1.668
	Edge 2 at 0mm					0.000	0.000
	Edge 4 at 0mm	0.937				0.937	0.937
LTE Band 12	Bottom Face at 23mm	0.272	0.534	0.531	0.026	0.806	0.829
	Edge 1 at 23mm	0.160	0.241	0.979	0.021	0.401	1.160
	Edge 2 at 0mm	0.106	0.143	0.378		0.249	0.484
	Edge 4 at 10mm	0.257	0.159			0.416	0.257
	Bottom Face at 0mm	1.190	0.250	0.778	0.182	1.440	2.150
	Edge 1 at 0mm	0.636	0.600	0.922	0.307	1.236	1.865
	Edge 2 at 0mm	0.092				0.092	0.092
	Edge 4 at 0mm	0.297				0.297	0.297
LTE Band 13	Bottom Face at 23mm	0.304	0.534	0.531	0.026	0.838	0.861
	Edge 1 at 23mm	0.118	0.241	0.979	0.021	0.359	1.118
	Edge 2 at 0mm	0.133	0.143	0.378		0.276	0.511
	Edge 4 at 10mm	0.232	0.159			0.391	0.232
	Bottom Face at 0mm	0.524	0.250	0.778	0.182	0.774	1.484
	Edge 1 at 0mm	0.376	0.600	0.922	0.307	0.976	1.605
	Edge 2 at 0mm	0.102				0.102	0.102
	Edge 4 at 0mm	0.355				0.355	0.355
LTE Band 26	Bottom Face at 23mm	0.499	0.534	0.531	0.026	1.033	1.056
	Edge 1 at 23mm	0.171	0.241	0.979	0.021	0.412	1.171
	Edge 2 at 0mm		0.143	0.378		0.143	0.378
	Edge 4 at 10mm	0.135	0.159			0.294	0.135
	Bottom Face at 0mm	1.149	0.250	0.778	0.182	1.399	2.109

	Edge 2 at 0mm					0.000	0.000	
	Edge 4 at 0mm	0.496				0.496	0.496	
LTE Band 38	Bottom Face at 23mm	0.615	0.534	0.531	0.026	1.149	1.172	
	Edge 1 at 23mm	0.217	0.241	0.979	0.021	0.458	1.217	
	Edge 2 at 0mm		0.143	0.378		0.143	0.378	
	Edge 4 at 10mm	0.171	0.159			0.330	0.171	
	Bottom Face at 0mm	0.573	0.250	0.778	0.182	0.823	1.533	
	Edge 1 at 0mm	0.477	0.600	0.922	0.307	1.077	1.706	
	Edge 2 at 0mm					0.000	0.000	
	Edge 4 at 0mm	0.775				0.775	0.775	
	LTE Band 40A	Bottom Face at 23mm	0.377	0.534	0.531	0.026	0.911	0.934
		Edge 1 at 23mm	0.235	0.241	0.979	0.021	0.476	1.235
Edge 2 at 0mm		0.100	0.143	0.378		0.243	0.478	
Edge 4 at 10mm		0.152	0.159			0.311	0.152	
Bottom Face at 0mm		0.636	0.250	0.778	0.182	0.886	1.596	
Edge 1 at 0mm		0.596	0.600	0.922	0.307	1.196	1.825	
Edge 2 at 0mm		0.154				0.154	0.154	
Edge 4 at 0mm		0.709				0.709	0.709	
LTE Band 40B	Bottom Face at 23mm	0.427	0.534	0.531	0.026	0.961	0.984	
	Edge 1 at 23mm	0.256	0.241	0.979	0.021	0.497	1.256	
	Edge 2 at 0mm	0.127	0.143	0.378		0.270	0.505	
	Edge 4 at 10mm	0.089	0.159			0.248	0.089	
	Bottom Face at 0mm	0.579	0.250	0.778	0.214	0.829	1.571	
	Edge 1 at 0mm	0.552	0.600	0.922	0.364	1.152	1.838	
	Edge 2 at 0mm	0.170				0.170	0.170	
	Edge 4 at 0mm	0.844				0.844	0.844	
LTE Band 41	Bottom Face at 23mm	0.551	0.534	0.531	0.026	1.085	1.108	
	Edge 1 at 23mm	0.192	0.241	0.979	0.021	0.433	1.192	
	Edge 2 at 0mm	0.069	0.143	0.378		0.212	0.447	
	Edge 4 at 10mm	0.184	0.159			0.343	0.184	
	Bottom Face at 0mm	1.078	0.250	0.778	0.182	1.328	2.038	
	Edge 1 at 0mm	0.606	0.600	0.922	0.307	1.206	1.835	
	Edge 2 at 0mm	0.142				0.142	0.142	
	Edge 4 at 0mm	0.707				0.707	0.707	
LTE Band 66	Bottom Face at 23mm	0.529	0.534	0.531	0.026	1.063	1.086	
	Edge 1 at 23mm	0.436	0.241	0.979	0.021	0.677	1.436	
	Edge 2 at 0mm		0.143	0.378		0.143	0.378	
	Edge 4 at 10mm	0.355	0.159			0.514	0.355	
	Bottom Face at 0mm	0.421	0.250	0.778	0.182	0.671	1.381	
	Edge 1 at 0mm	0.508	0.600	0.922	0.307	1.108	1.737	
	Edge 2 at 0mm					0.000	0.000	
	Edge 4 at 0mm	0.352				0.352	0.352	

SPLSR Analysis

Band	Position	SAR (W/kg)	Gap (mm)	SAR peak location (cm)			3D distance (mm)	Summed SAR (W/kg)	SPLSR Results	Simultaneous SAR
				X	Y	Z				
GSM850	Bottom Face	0.753	0	0.028	0.025	-0.205	235.5	1.71	0.01	Not required
WLAN 5.5GHz		0.778	0	-0.042	0.046	-0.205				
Bluetooth		0.182	0	-0.0332	0.0318	-0.205				

Band	Position	SAR (W/kg)	Gap (mm)	SAR peak location (cm)			3D distance (mm)	Summed SAR (W/kg)	SPLSR Results	Simultaneous SAR
				X	Y	Z				
GSM850	Edge 1	0.742	0	-0.0185	0.055	-0.205	207.3	1.97	0.01	Not required
WLAN 5.5GHz		0.922	0	-0.024	0.021	-0.205				
Bluetooth		0.307	0	-0.0206	0.0172	-0.205				

Band	Position	SAR (W/kg)	Gap (mm)	SAR peak location (cm)			3D distance (mm)	Summed SAR (W/kg)	SPLSR Results	Simultaneous SAR
				X	Y	Z				
GSM1900	Bottom Face	0.572	0	0.006	0.031	-0.205	225.4	1.53	0.01	Not required
WLAN 5.5GHz		0.778	0	-0.042	0.046	-0.205				
Bluetooth		0.182	0	-0.0332	0.0318	-0.205				

Band	Position	SAR (W/kg)	Gap (mm)	SAR peak location (cm)			3D distance (mm)	Summed SAR (W/kg)	SPLSR Results	Simultaneous SAR
				X	Y	Z				
GSM1900	Edge 1	0.557	0	-0.02	-0.029	-0.205	217.1	1.79	0.01	Not required
WLAN 5.5GHz		0.922	0	-0.024	0.021	-0.205				
Bluetooth		0.307	0	-0.0206	0.0172	-0.205				

Band	Position	SAR (W/kg)	Gap (mm)	SAR peak location (cm)			3D distance (mm)	Summed SAR (W/kg)	SPLSR Results	Simultaneous SAR
				X	Y	Z				
WCDMA Band II	Bottom Face	0.719	0	0.0025	0.04	-0.205	222.5	1.68	0.01	Not required
WLAN 5.5GHz		0.778	0	-0.042	0.046	-0.205				
Bluetooth		0.182	0	-0.0332	0.0318	-0.205				

Band	Position	SAR (W/kg)	Gap (mm)	SAR peak location (cm)			3D distance (mm)	Summed SAR (W/kg)	SPLSR Results	Simultaneous SAR
				X	Y	Z				
WCDMA II	Edge 1	0.777	0	-0.024	0.021	-0.205	206.7	2.01	0.01	Not required
WLAN 5.5GHz		0.922	0	-0.024	0.021	-0.205				
Bluetooth		0.307	0	-0.0206	0.0172	-0.205				

Band	Position	SAR (W/kg)	Gap (mm)	SAR peak location (cm)			3D distance (mm)	Summed SAR (W/kg)	SPLSR Results	Simultaneous SAR
				X	Y	Z				
WCDMA Band IV	Bottom Face	0.765	0	0.009	0.047	-0.205	223.7	1.73	0.01	Not required
WLAN 5.5GHz		0.778	0	-0.042	0.046	-0.205				
Bluetooth		0.182	0	-0.0332	0.0318	-0.205				

Band	Position	SAR (W/kg)	Gap (mm)	SAR peak location (cm)			3D distance (mm)	Summed SAR (W/kg)	SPLSR Results	Simultaneous SAR
				X	Y	Z				
WCDMA IV	Edge 1	0.835	0	-0.026	-0.0355	-0.205	218.6	2.06	0.01	Not required
WLAN 5.5GHz		0.922	0	-0.024	0.021	-0.205				
Bluetooth		0.307	0	-0.0206	0.0172	-0.205				

Band	Position	SAR (W/kg)	Gap (mm)	SAR peak location (cm)			3D distance (mm)	Summed SAR (W/kg)	SPLSR Results	Simultaneous SAR
				X	Y	Z				
WCDMA Band V	Bottom Face	1.141	0	0.0115	0.048	-0.205	220.0	2.10	0.01	Not required
WLAN 5.5GHz		0.778	0	-0.042	0.046	-0.205				
Bluetooth		0.182	0	-0.024	0.021	-0.205				

Band	Position	SAR (W/kg)	Gap (mm)	SAR peak location (cm)			3D distance (mm)	Summed SAR (W/kg)	SPLSR Results	Simultaneous SAR
				X	Y	Z				
LTE Band 2	Edge 1	0.727	0	-0.029	-0.037	-0.205	218.9	1.96	0.01	Not required
WLAN 5.5GHz		0.922	0	-0.024	0.021	-0.205				
Bluetooth		0.307	0	-0.0206	0.0172	-0.205				

Band	Position	SAR (W/kg)	Gap (mm)	SAR peak location (cm)			3D distance (mm)	Summed SAR (W/kg)	SPLSR Results	Simultaneous SAR
				X	Y	Z				
LTE Band 4	Edge 1	0.473	0	-0.026	-0.037	-0.205	219.1	1.70	0.01	Not required
WLAN 5.5GHz		0.922	0	-0.024	0.021	-0.205				

Bluetooth		0.307	0	-0.0206	0.0172	-0.205				
Band	Position	SAR (W/kg)	Gap (mm)	SAR peak location (cm)			3D distance (mm)	Summed SAR (W/kg)	SPLSR Results	Simultaneous SAR
				X	Y	Z				
LTE Band 5	Bottom Face	0.73	0	-0.004	0.04	-0.205	215.9	1.69	0.01	Not required
WLAN 5.5GHz		0.778	0	-0.042	0.046	-0.205				
Bluetooth		0.182	0	-0.024	0.021	-0.205				
Band	Position	SAR (W/kg)	Gap (mm)	SAR peak location (cm)			3D distance (mm)	Summed SAR (W/kg)	SPLSR Results	Simultaneous SAR
				X	Y	Z				
LTE Band 5	Edge 1	0.515	0	-0.024	0.021	-0.205	206.7	1.74	0.01	Not required
WLAN 5.5GHz		0.922	0	-0.024	0.021	-0.205				
Bluetooth		0.307	0	-0.0206	0.0172	-0.205				
Band	Position	SAR (W/kg)	Gap (mm)	SAR peak location (cm)			3D distance (mm)	Summed SAR (W/kg)	SPLSR Results	Simultaneous SAR
				X	Y	Z				
LTE Band 7	Edge 1	0.455	0	-0.0218	-0.0444	-0.205	222.2	1.68	0.01	Not required
WLAN 5.5GHz		0.922	0	-0.024	0.021	-0.205				
Bluetooth		0.307	0	-0.0206	0.0172	-0.205				
Band	Position	SAR (W/kg)	Gap (mm)	SAR peak location (cm)			3D distance (mm)	Summed SAR (W/kg)	SPLSR Results	Simultaneous SAR
				X	Y	Z				
LTE Band 12	Bottom Face	1.19	0	0.0185	0.031	-0.205	224.6	2.15	0.01	Not required
WLAN 5.5GHz		0.778	0	-0.042	0.046	-0.205				
Bluetooth		0.182	0	-0.024	0.021	-0.205				
Band	Position	SAR (W/kg)	Gap (mm)	SAR peak location (cm)			3D distance (mm)	Summed SAR (W/kg)	SPLSR Results	Simultaneous SAR
				X	Y	Z				
LTE Band 12	Edge 1	0.636	0	-0.0218	-0.0394	-0.205	220.4	1.87	0.01	Not required
WLAN 5.5GHz		0.922	0	-0.024	0.021	-0.205				
Bluetooth		0.307	0	-0.0206	0.0172	-0.205				
Band	Position	SAR (W/kg)	Gap (mm)	SAR peak location (cm)			3D distance (mm)	Summed SAR (W/kg)	SPLSR Results	Simultaneous SAR
				X	Y	Z				
LTE Band 13	Edge 1	0.376	0	-0.0185	-0.017	-0.205	213.9	1.61	0.01	Not required
WLAN 5.5GHz		0.922	0	-0.024	0.021	-0.205				
Bluetooth		0.307	0	-0.0206	0.0172	-0.205				
Band	Position	SAR (W/kg)	Gap (mm)	SAR peak location (cm)			3D distance (mm)	Summed SAR (W/kg)	SPLSR Results	Simultaneous SAR
				X	Y	Z				
LTE Band 26	Bottom Face	1.149	0	0.012	0.0345	-0.205	226.9	2.11	0.01	Not required
WLAN 5.5GHz		0.778	0	-0.042	0.046	-0.205				
Bluetooth		0.182	0	-0.0332	0.0318	-0.205				
Band	Position	SAR (W/kg)	Gap (mm)	SAR peak location (cm)			3D distance (mm)	Summed SAR (W/kg)	SPLSR Results	Simultaneous SAR
				X	Y	Z				
LTE Band 26	Edge 1	0.603	0	-0.0218	-0.0394	-0.205	220.4	1.83	0.01	Not required
WLAN 5.5GHz		0.922	0	-0.024	0.021	-0.205				
Bluetooth		0.307	0	-0.0206	0.0172	-0.205				
Band	Position	SAR (W/kg)	Gap (mm)	SAR peak location (cm)			3D distance (mm)	Summed SAR (W/kg)	SPLSR Results	Simultaneous SAR
				X	Y	Z				
LTE Band 38	Edge 1	0.483	0	-0.0218	-0.0456	-0.205	222.6	1.71	0.01	Not required
WLAN 5.5GHz		0.922	0	-0.024	0.021	-0.205				
Bluetooth		0.307	0	-0.0206	0.0172	-0.205				
Band	Position	SAR (W/kg)	Gap (mm)	SAR peak location (cm)			3D distance (mm)	Summed SAR (W/kg)	SPLSR Results	Simultaneous SAR
				X	Y	Z				
LTE Band 40A	Bottom Face	0.636	0	0.0266	0.0342	-0.205	233.0	1.60	0.01	Not required
WLAN 5.5GHz		0.778	0	-0.042	0.046	-0.205				
Bluetooth		0.182	0	-0.0332	0.0318	-0.205				
Band	Position	SAR (W/kg)	Gap (mm)	SAR peak location (cm)			3D distance (mm)	Summed SAR (W/kg)	SPLSR Results	Simultaneous SAR
				X	Y	Z				
LTE Band 40A	Edge 1	0.603	0	-0.0194	-0.04	-0.205	220.9	1.83	0.01	Not required
WLAN 5.5GHz		0.922	0	-0.024	0.021	-0.205				
Bluetooth		0.307	0	-0.0206	0.0172	-0.205				
Band	Position	SAR (W/kg)	Gap (mm)	SAR peak location (cm)			3D distance (mm)	Summed SAR (W/kg)	SPLSR Results	Simultaneous SAR
				X	Y	Z				
LTE Band 40B		0.558	0	-0.0194	-0.042	-0.205				

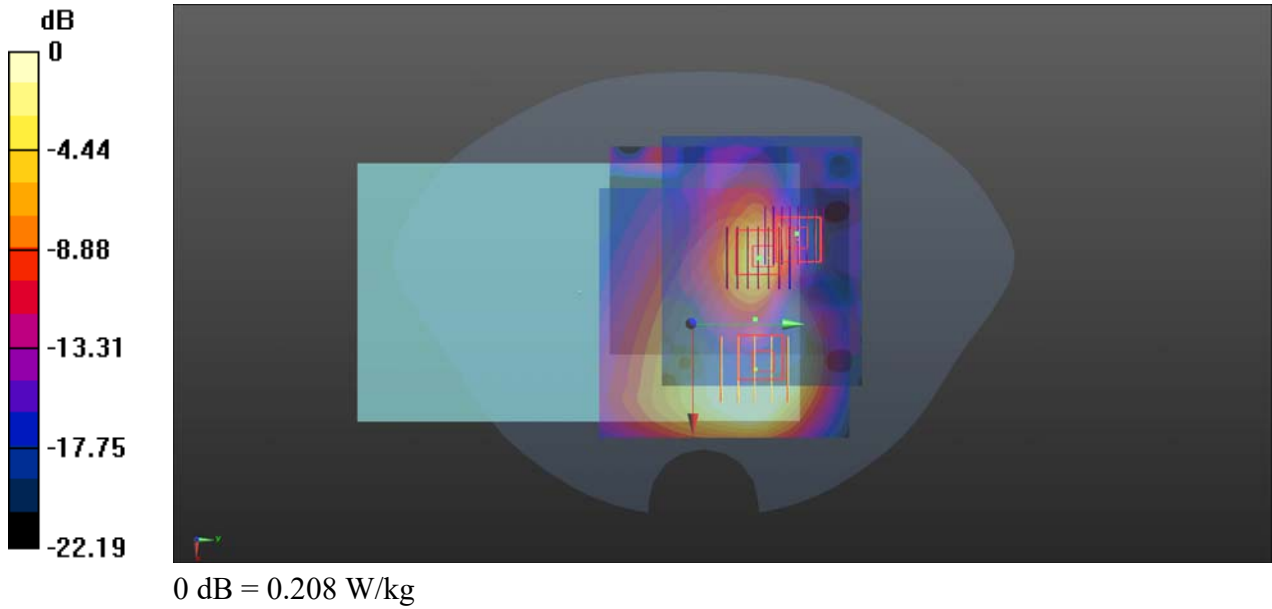
WLAN 5.5GHz	Edge 1	0.922	0	-0.024	0.021	-0.205	221.6	1.79	0.01	Not required
Bluetooth		0.307	0	-0.0206	0.0172	-0.205				

Band	Position	SAR (W/kg)	Gap (mm)	SAR peak location (cm)			3D distance (mm)	Summed SAR (W/kg)	SPLSR Results	Simultaneous SAR
				X	Y	Z				
LTE Band 41	Bottom Face	1.093	0	0.0278	0.0416	-0.205	232.3	2.05	0.01	Not required
WLAN 5.5GHz		0.778	0	-0.042	0.046	-0.205				
Bluetooth		0.182	0	-0.0332	0.0318	-0.205				

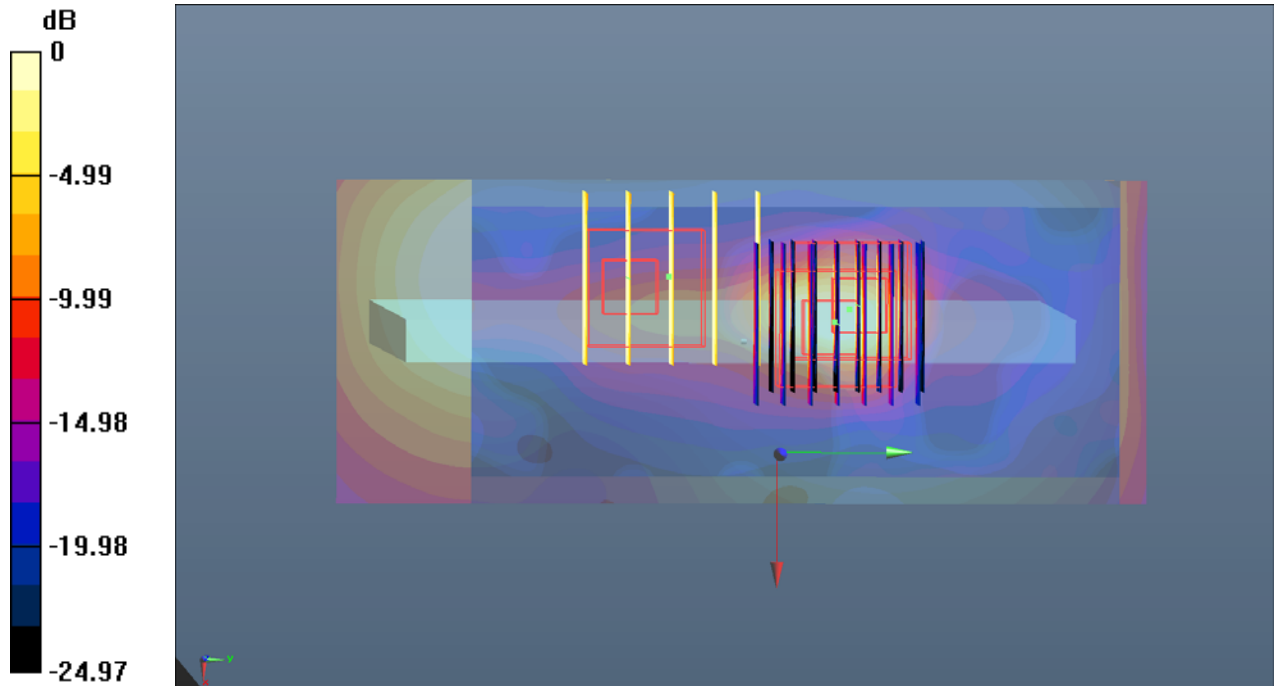
Band	Position	SAR (W/kg)	Gap (mm)	SAR peak location (cm)			3D distance (mm)	Summed SAR (W/kg)	SPLSR Results	Simultaneous SAR
				X	Y	Z				
LTE Band 41	Edge 1	0.615	0	-0.0206	-0.0444	-0.205	222.3	1.84	0.01	Not required
WLAN 5.5GHz		0.922	0	-0.024	0.021	-0.205				
Bluetooth		0.307	0	-0.0206	0.0172	-0.205				

Band	Position	SAR (W/kg)	Gap (mm)	SAR peak location (cm)			3D distance (mm)	Summed SAR (W/kg)	SPLSR Results	Simultaneous SAR
				X	Y	Z				
LTE Band 66	Edge 1	0.508	0	-0.0206	-0.0394	-0.205	220.5	1.74	0.01	Not required
WLAN 5.5GHz		0.922	0	-0.024	0.021	-0.205				
Bluetooth		0.307	0	-0.0206	0.0172	-0.205				

GSM850+5.5GHz+Bluetooth

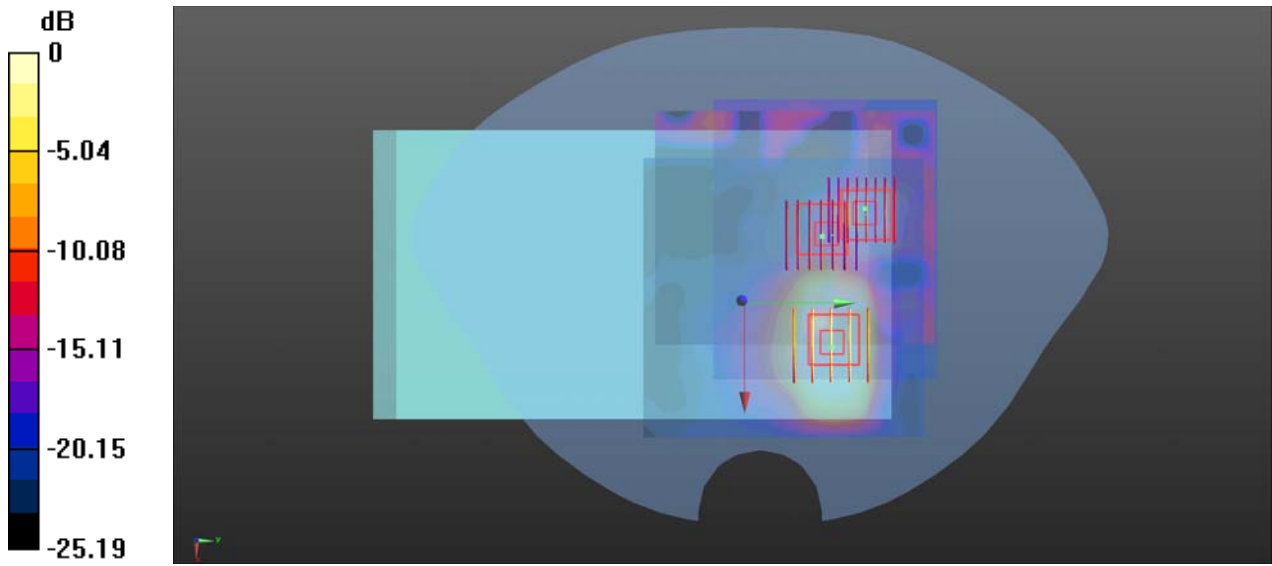


GSM850+5.5GHz+Bluetooth_Edge 1



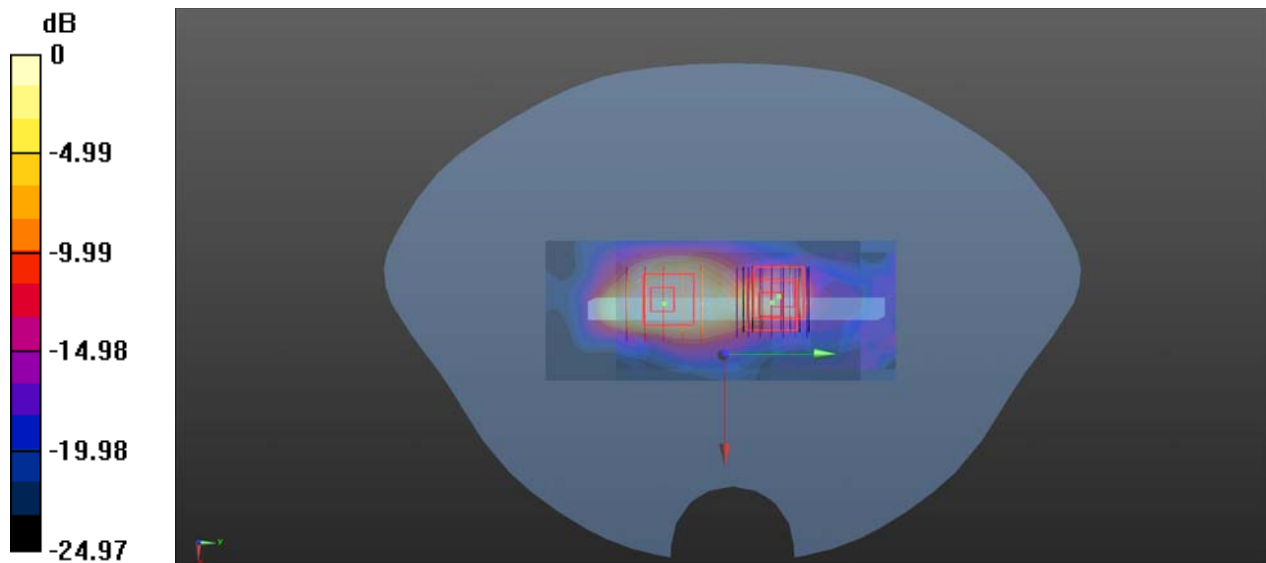
0 dB = 0.353 W/kg

GSM1900+5.5GHz+Bluetooth_Bottom Face



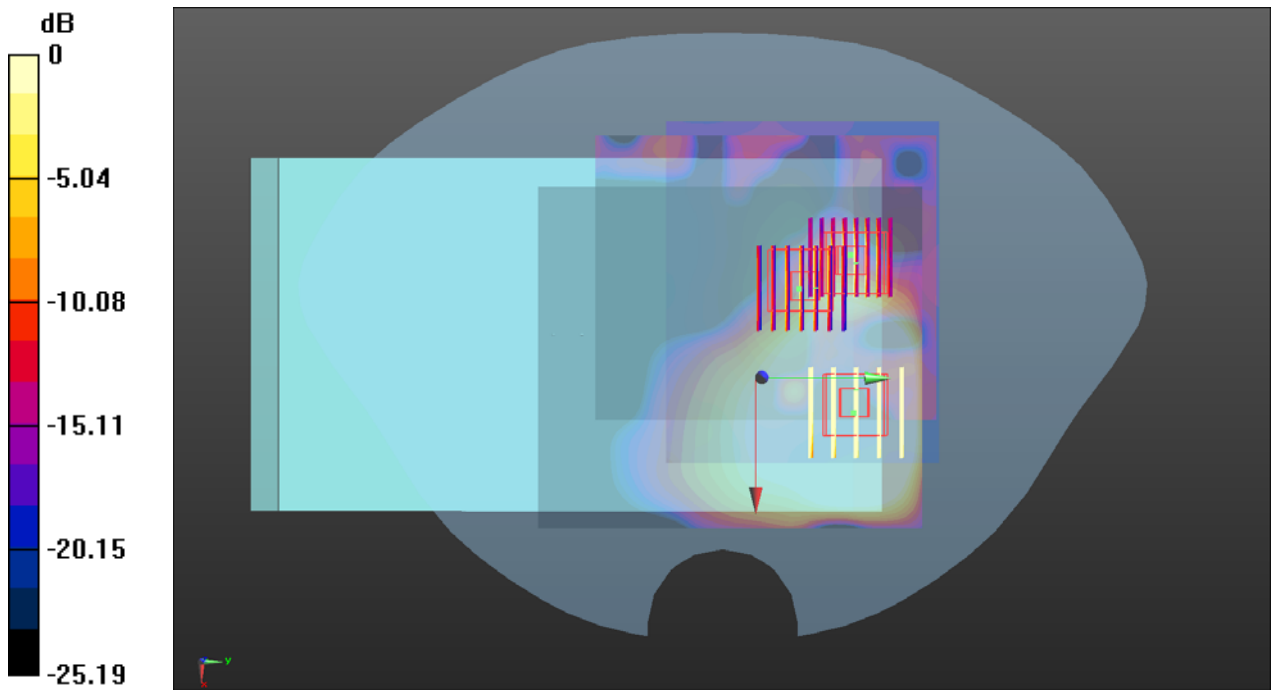
0 dB = 0.208 W/kg

GSM1900+5.5GHz+Bluetooth_Edge 1



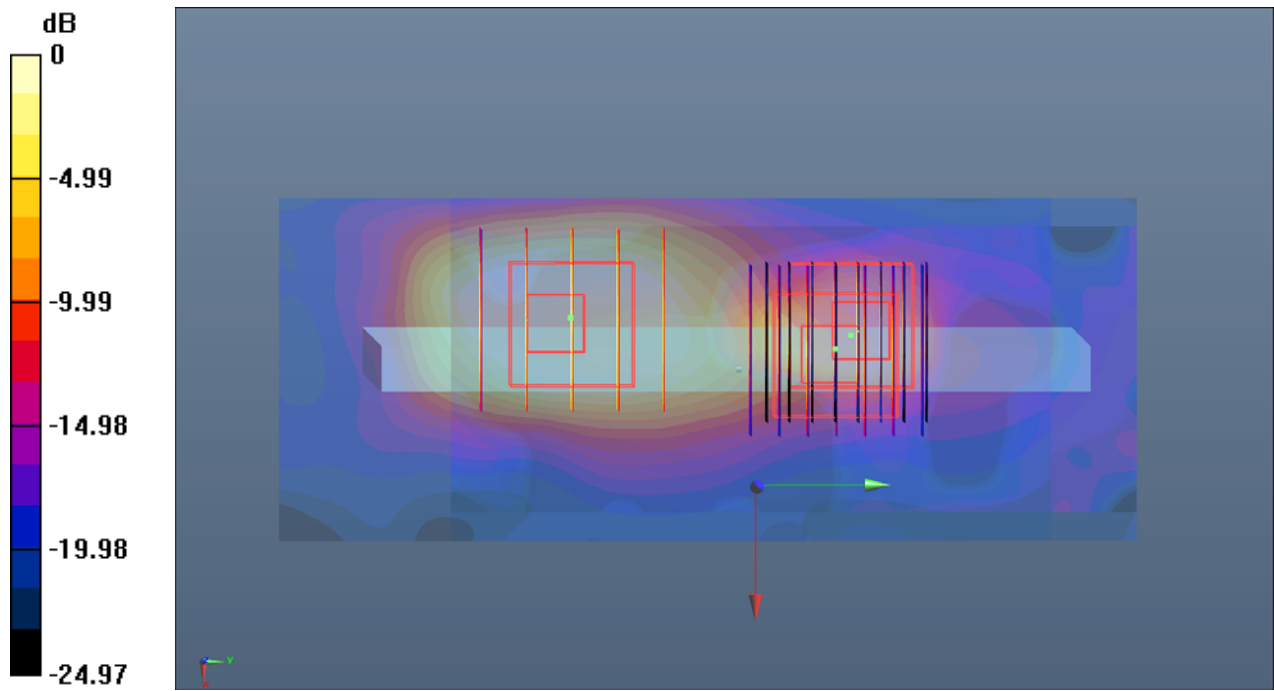
0 dB = 0.353 W/kg

WCDMA Band II+5.5GHz+Bluetooth_Bottom Face



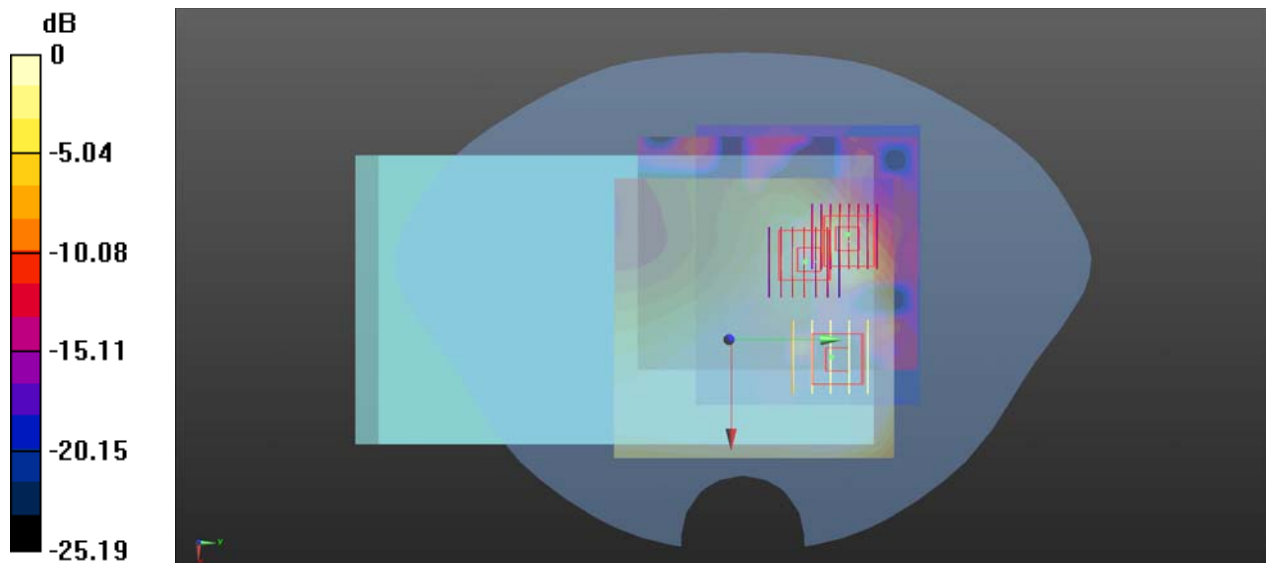
0 dB = 0.208 W/kg = -6.82 dBW/kg

WCDMA Band II+5.5GWiFi+Bluetooth_Edge 1



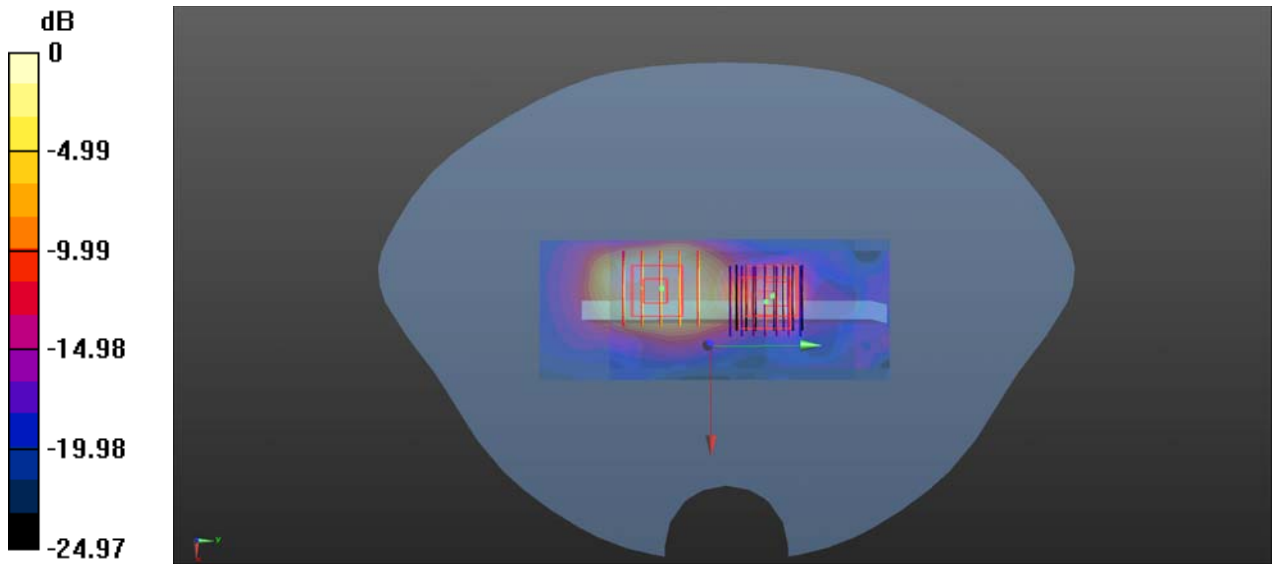
0 dB = 0.353 W/kg

WCDMA IV+5.5GHz+Bluetooth_Bottom Face



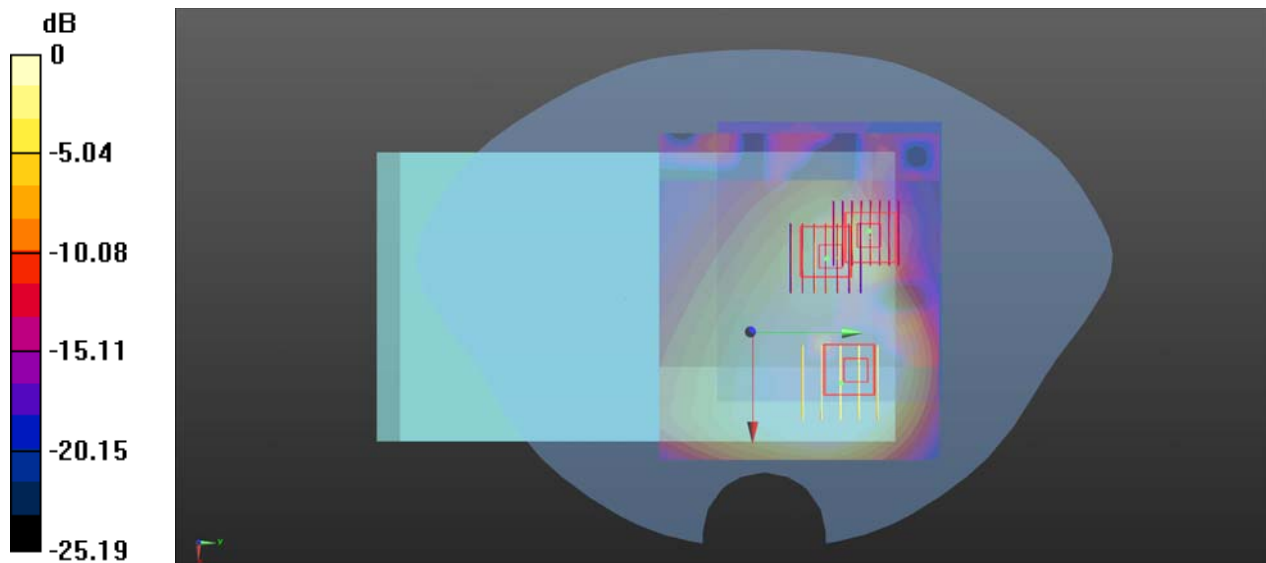
0 dB = 0.208 W/kg

WCDMA IV+5.5GHz+Bluetooth_Edge 1



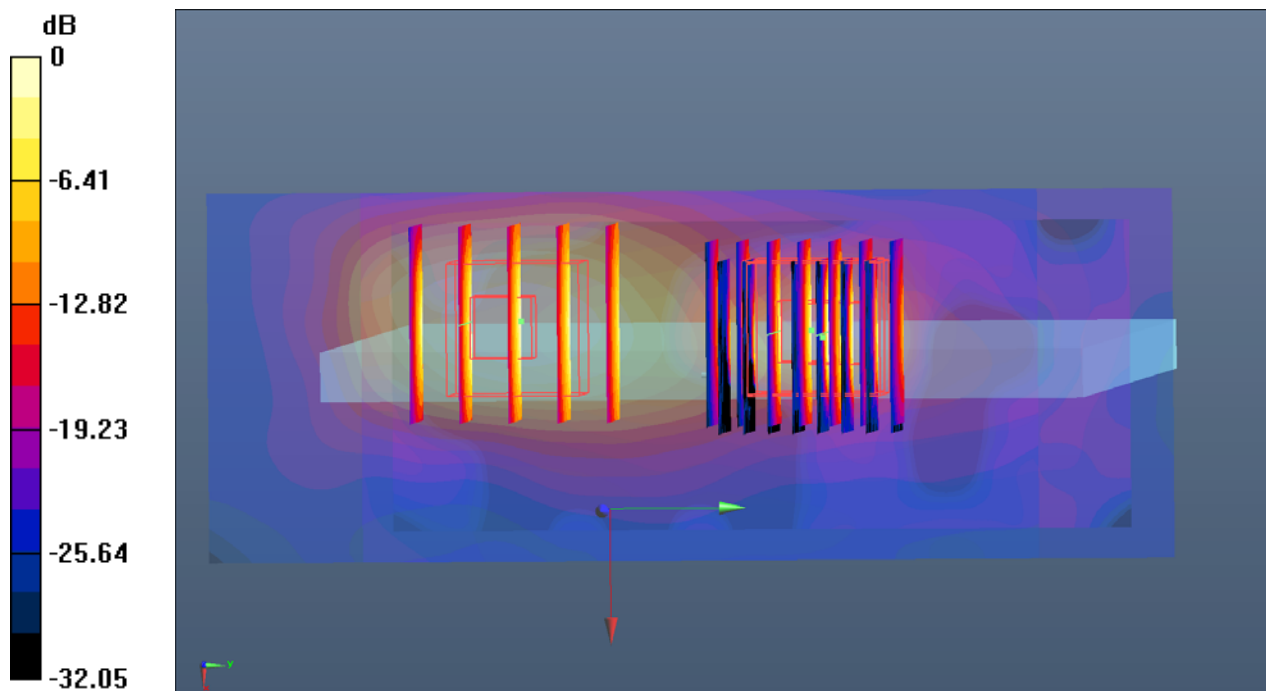
0 dB = 0.353 W/kg

WCDMA V+5.5GHz+Bluetooth_Bottom Face



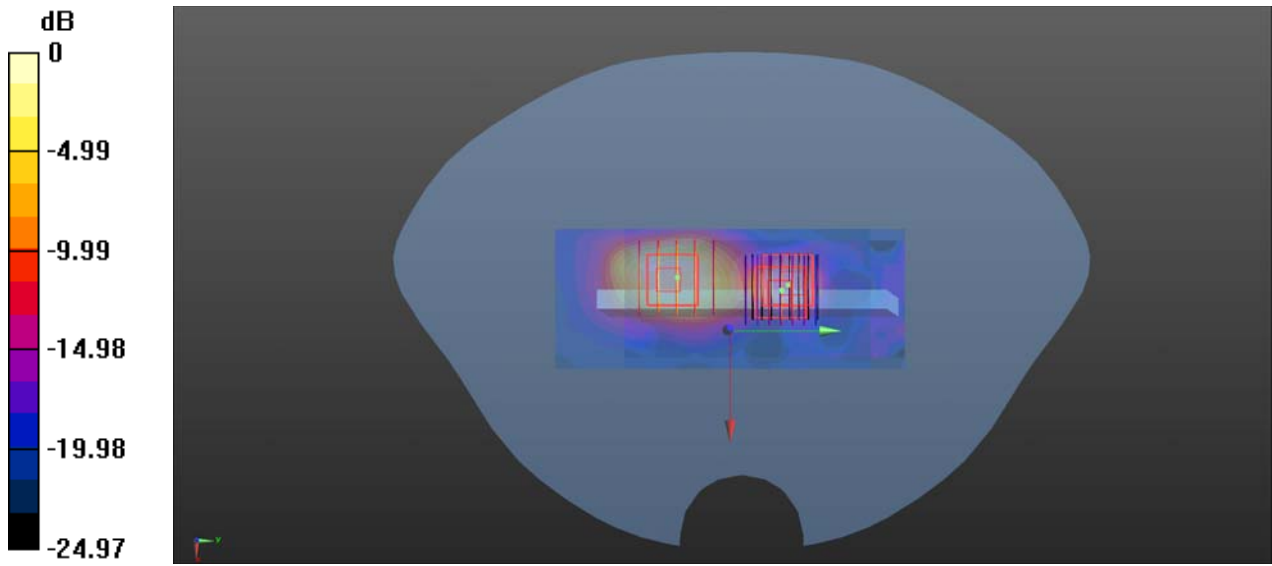
0 dB = 0.208 W/kg

LTE Band 2+5.5GHz+Bluetooth_Edge 1



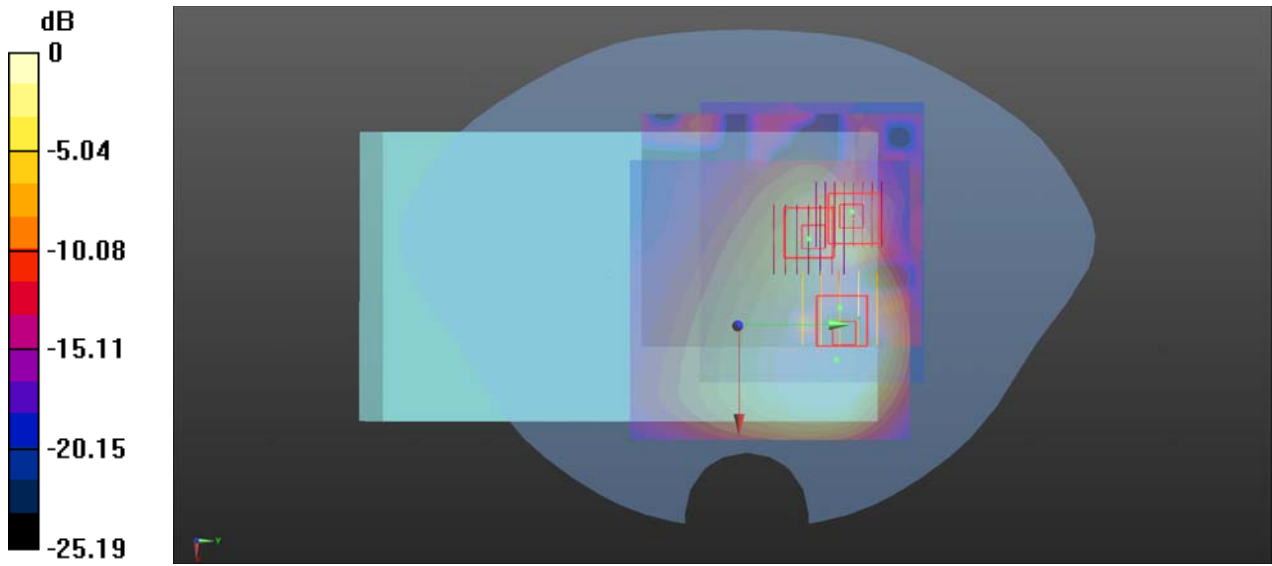
0 dB = 0.823 W/kg

LTE Band 4+5.5GHz+Bluetooth_Edge 1



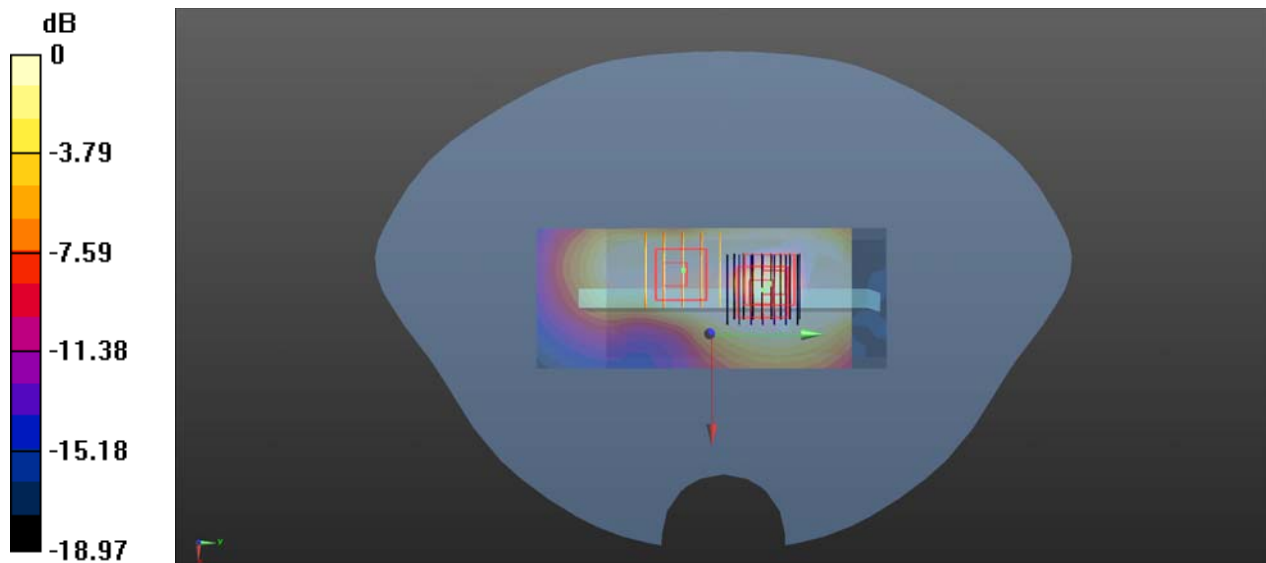
0 dB = 0.353 W/kg

LTE Band 5+5.5GHz+Bluetooth_Bottom Face



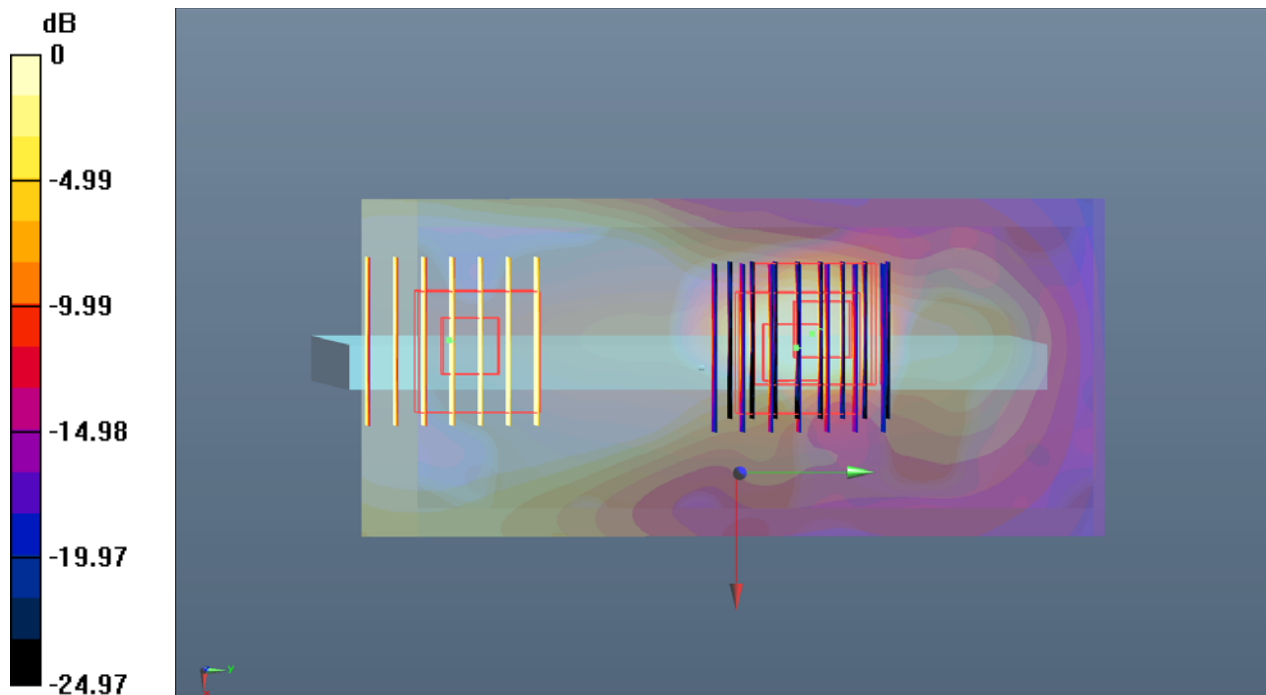
0 dB = 0.208 W/kg

LTE Band 5+5.5GHz+Bluetooth_Edge 1



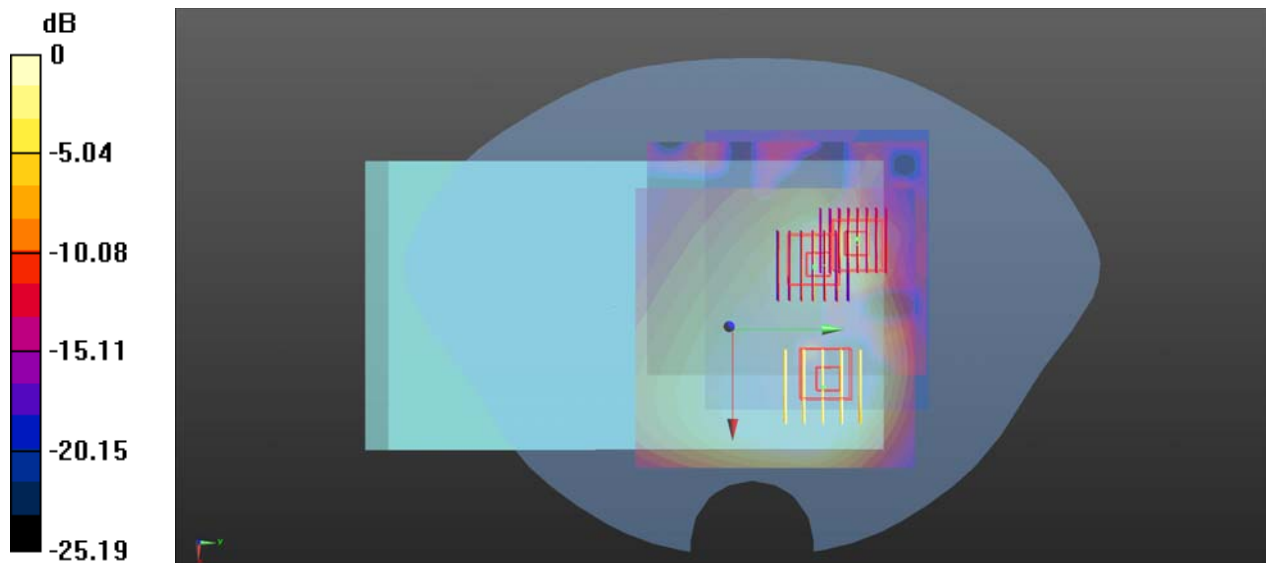
0 dB = 0.353 W/kg

LTE Band 7+5.5GHz+Bluetooth_Edge 1



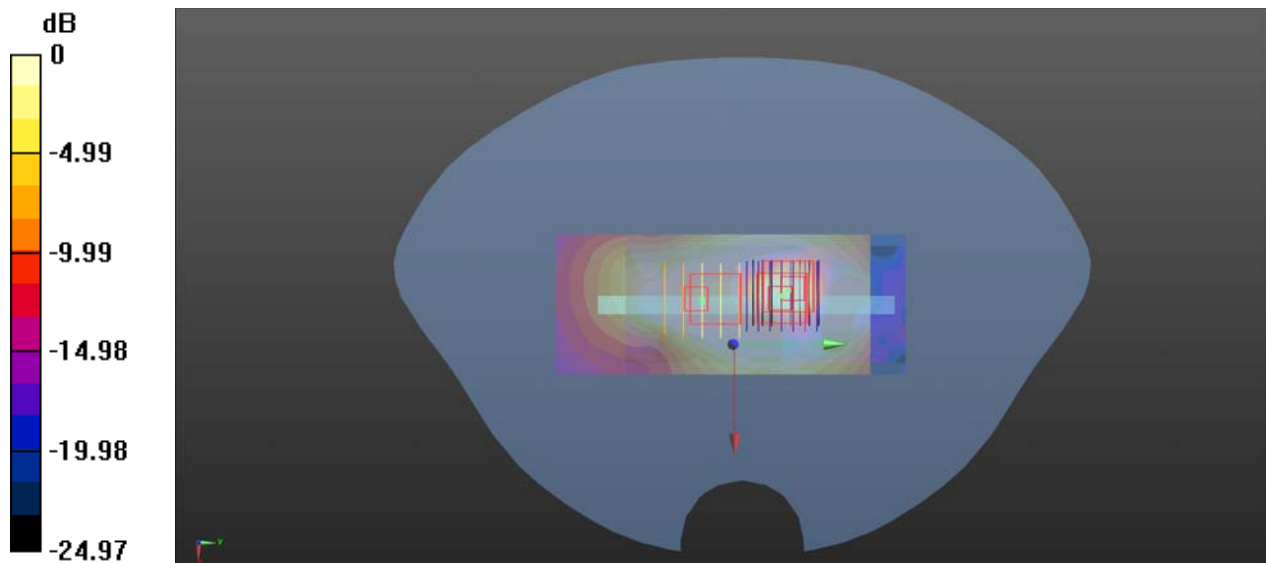
0 dB = 0.353 W/kg

LTE Band 12+5.5GHz+Bluetooth_Bottom Face



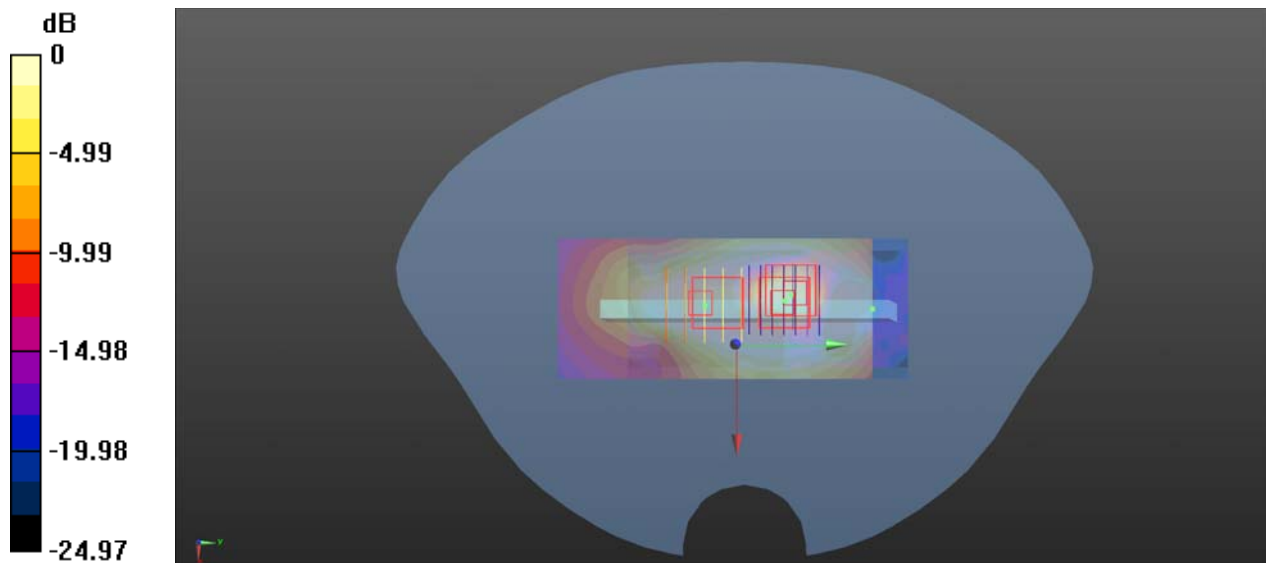
0 dB = 0.208 W/kg

LTE Band 12+5.5GHz+Bluetooth_Edge 1



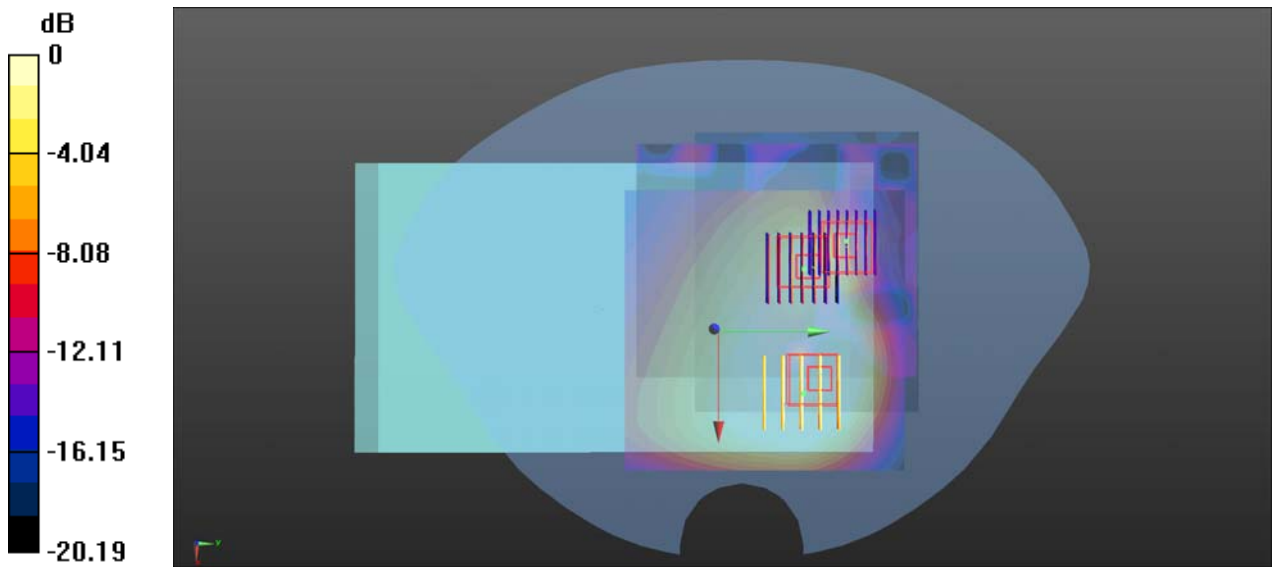
0 dB = 0.353 W/kg

LTE Band 13+5.5GHz+Bluetooth_Edge 1



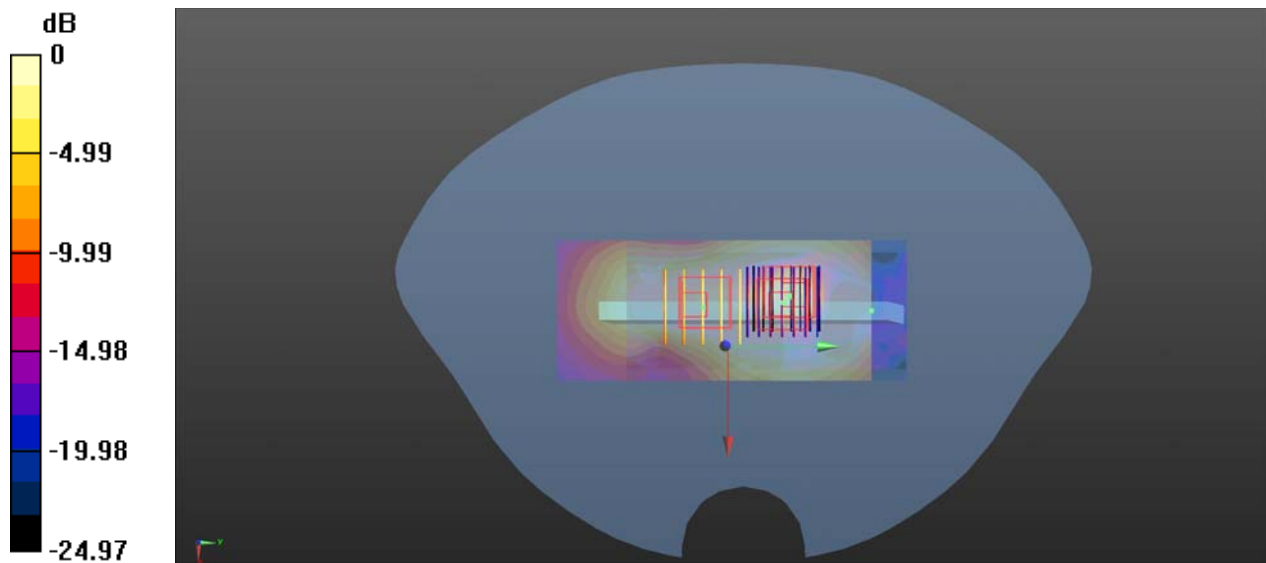
0 dB = 0.353 W/kg

LTE Band 26+5.5GHz+Bluetooth_Bottom Face



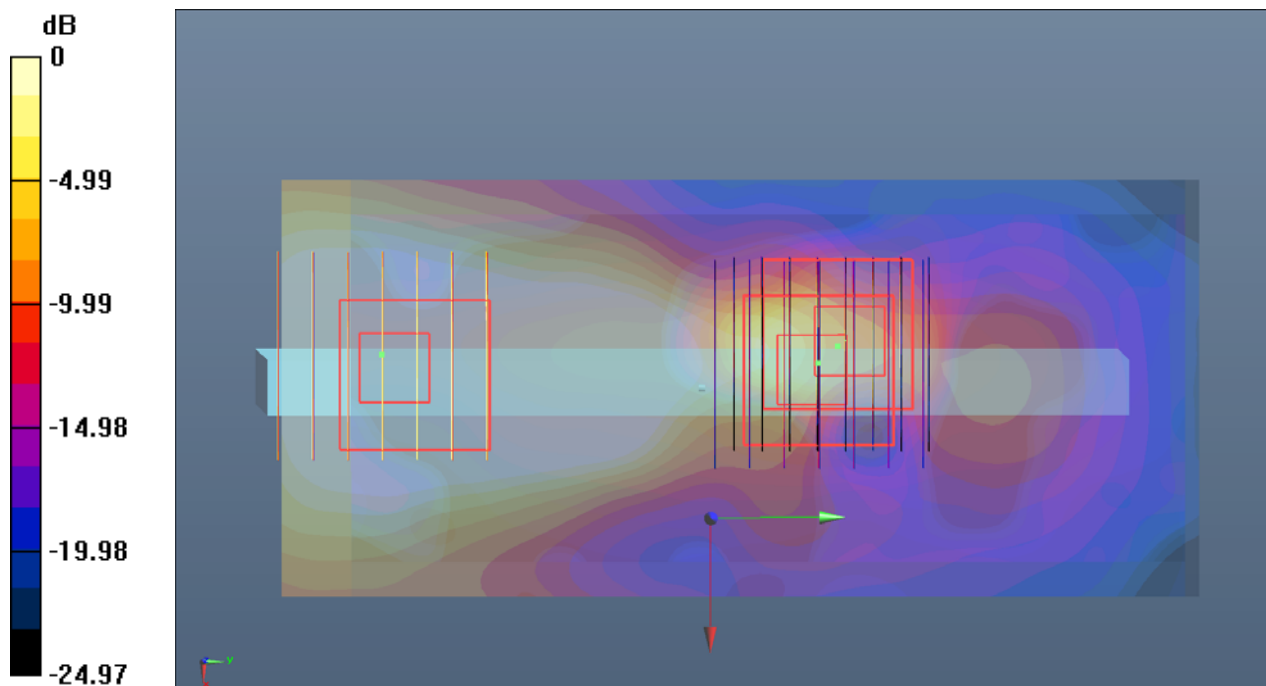
0 dB = 0.208 W/kg

LTE Band 26+5.5GHz+Bluetooth_Edge 1



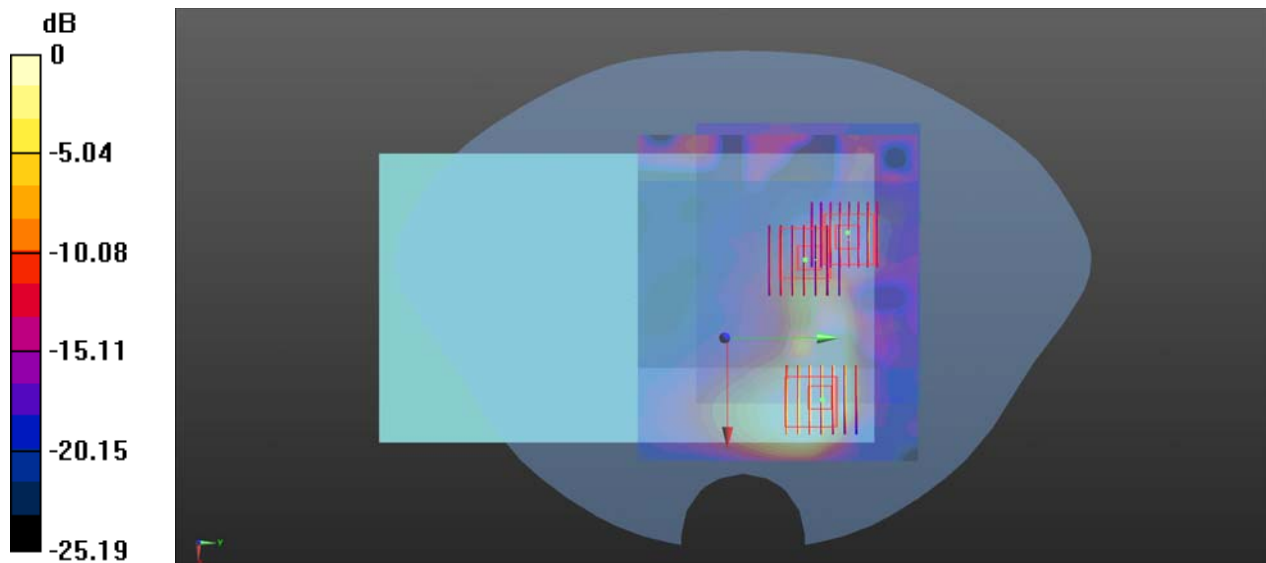
0 dB = 0.353 W/kg

LTE Band 38+5.5GHz+Bluetooth_Edge 1



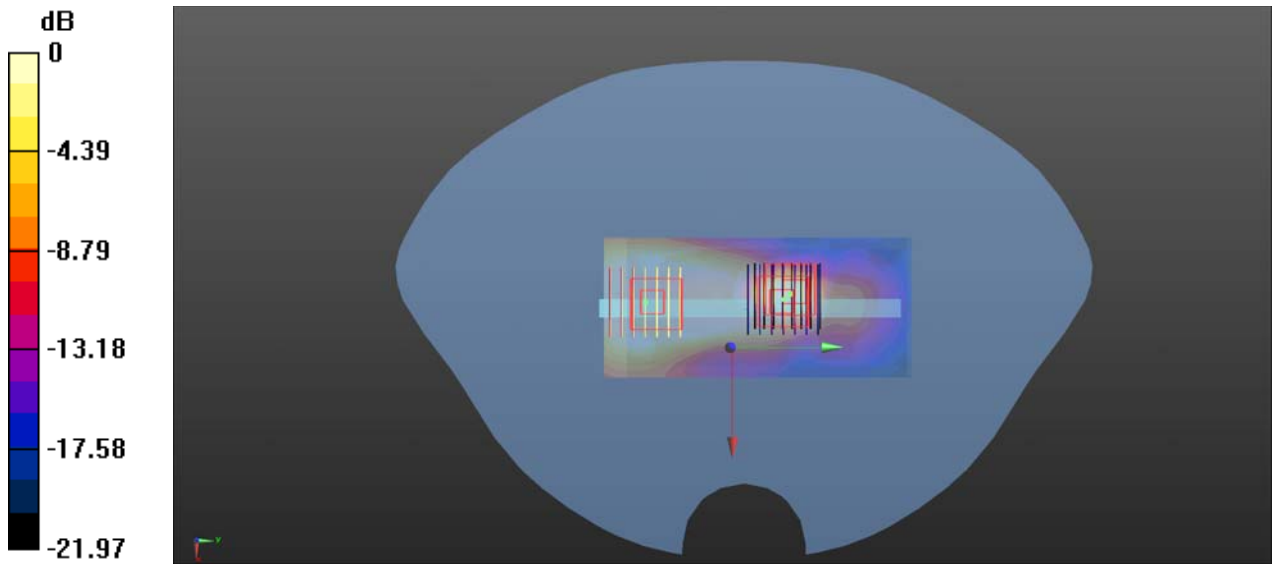
0 dB = 0.353 W/kg

LTE Band 40A+5.5GHz+Bluetooth_Bottom Face



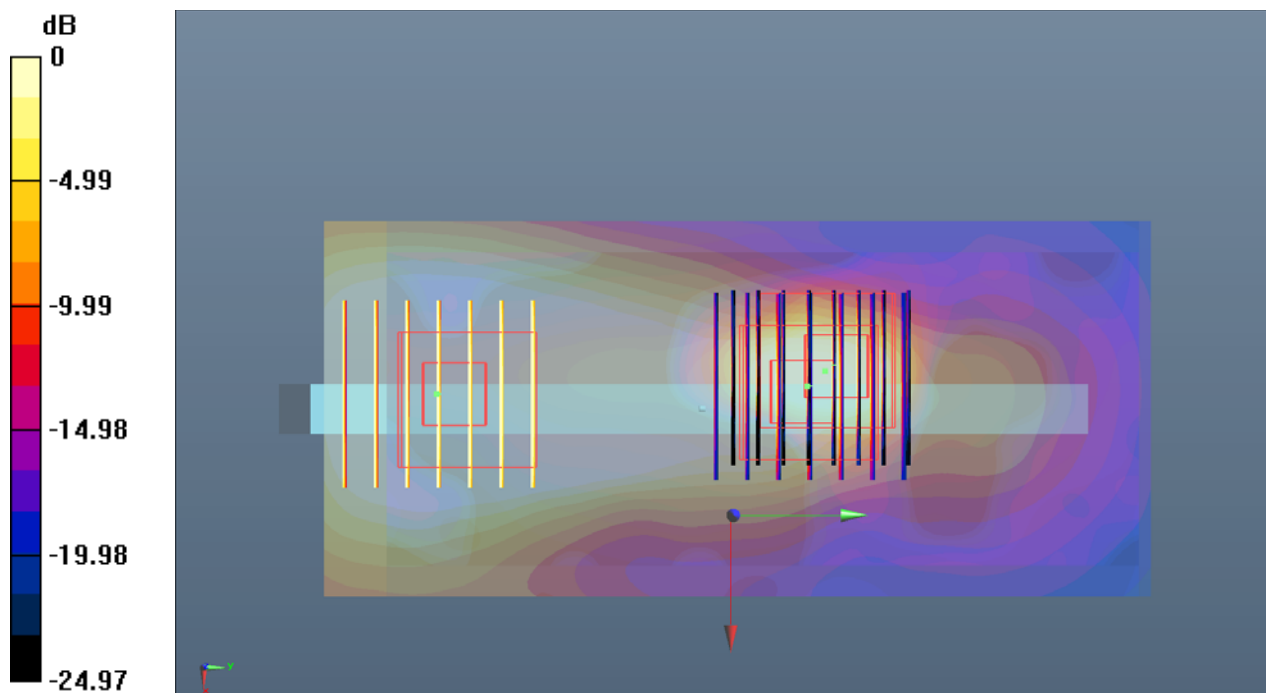
0 dB = 0.208 W/kg

LTE Band 40A+5.5GHz+Bluetooth_Edge 1



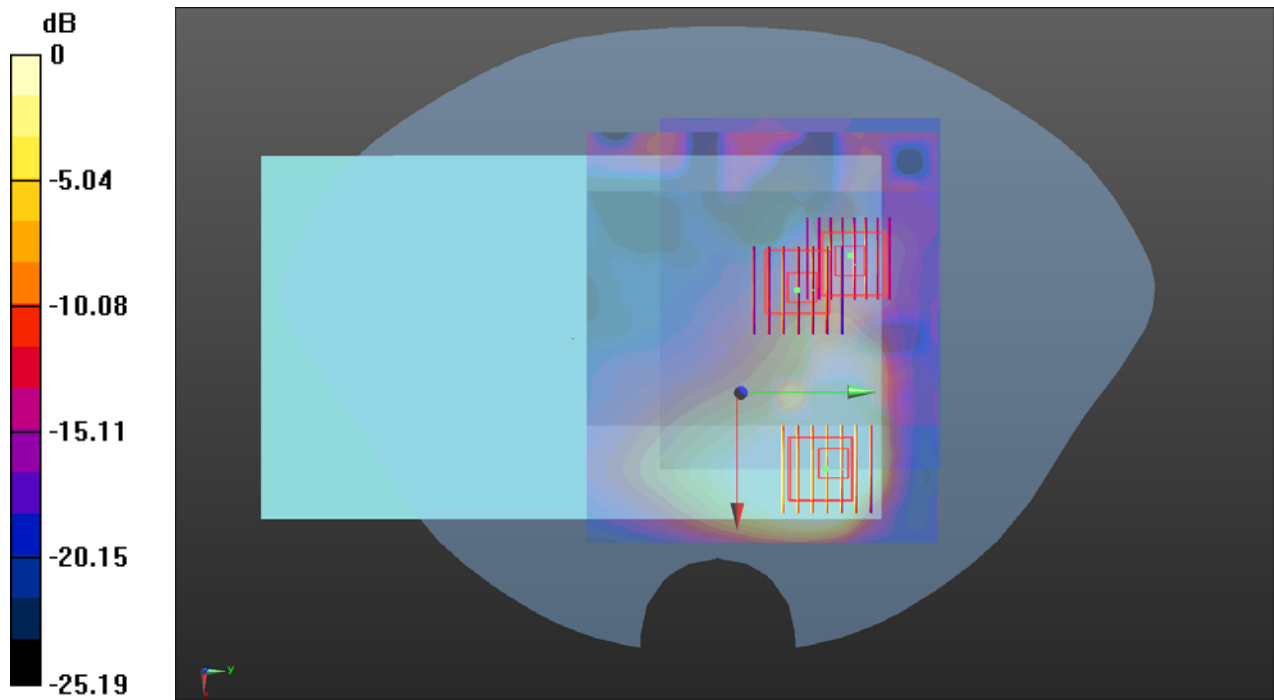
0 dB = 0.353 W/kg

LTE Band 40B+5.5GHz+Bluetooth_Edge 1



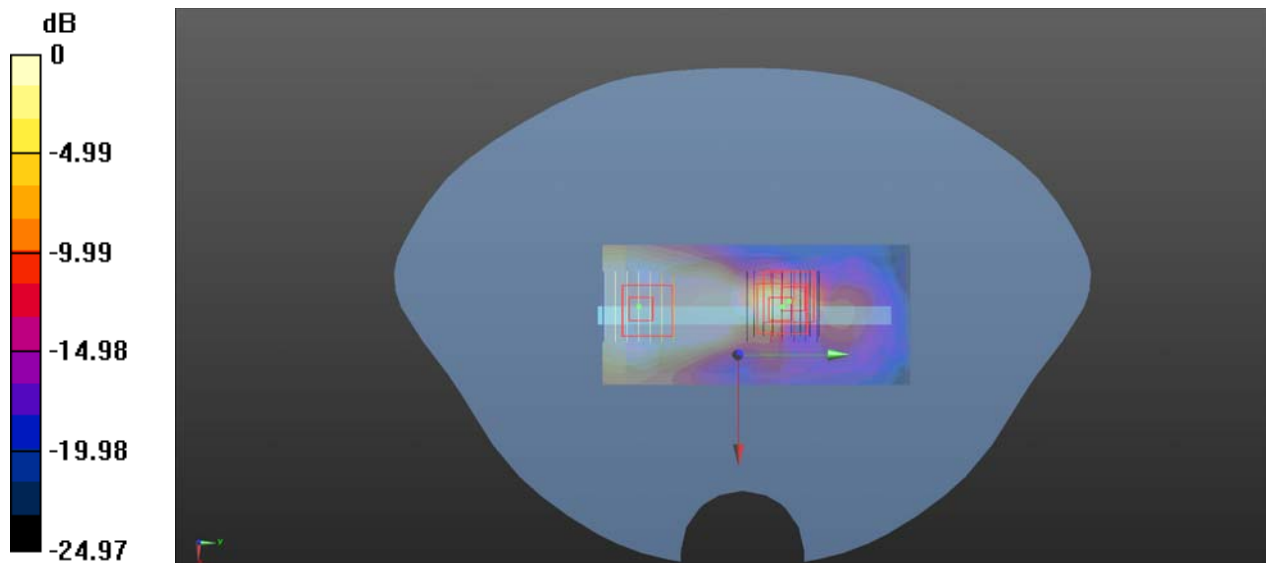
0 dB = 0.353 W/kg

LTE Band 41+5.5GHz+Bluetooth_Bottom Face



0 dB = 0.208 W/kg

LTE Band 41+5.5GHz+Bluetooth_Edge 1



0 dB = 0.353 W/kg

LTE Band 66+5.5GHz+Bluetooth_Edge 1

