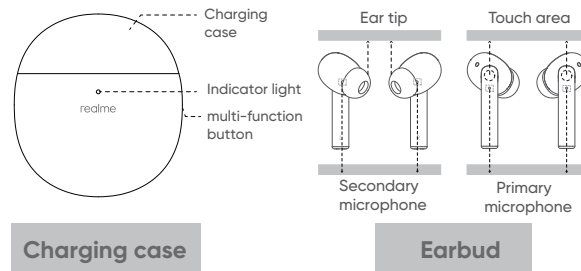


realme

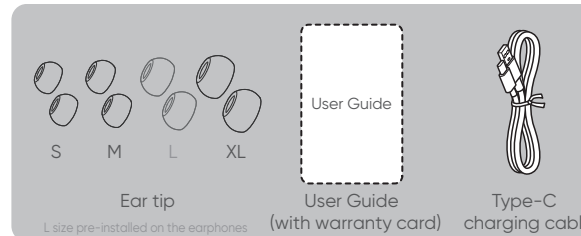
realme Buds Air Pro

User guide
please read carefully before using the product

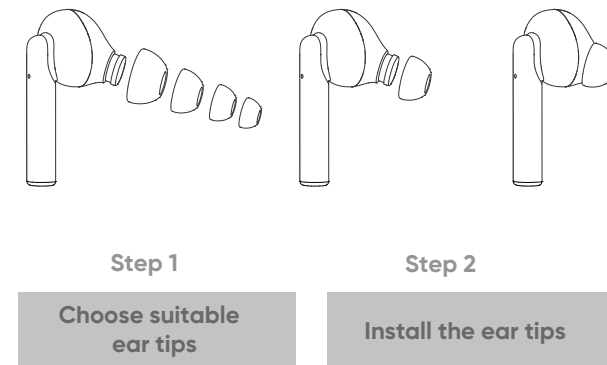
OVERVIEW



Packing List

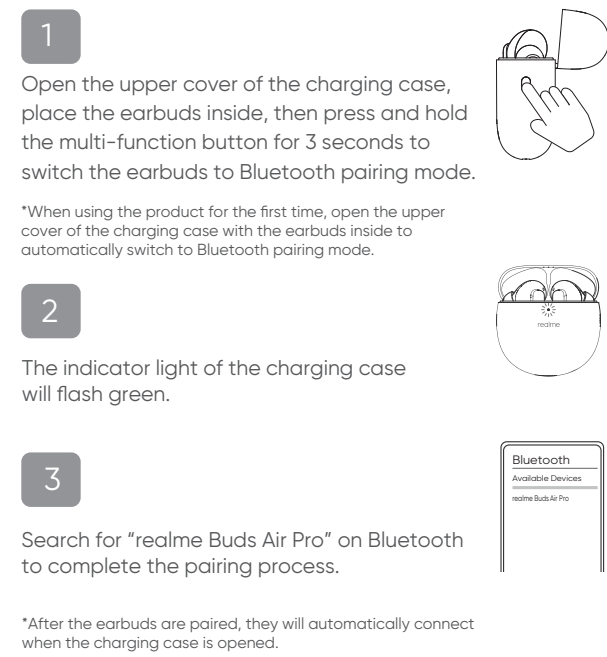


SELECTING EAR TIPS

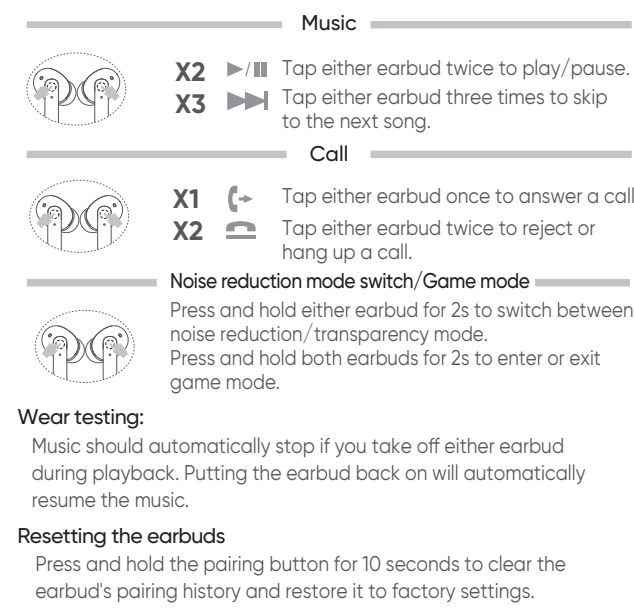


Try on ear tips of varying sizes and choose the one that best suits you. Appropriately sized ear tips will provide the best experience in terms of noise reduction, music, and comfort.

BLUETOOTH PAIRING



TOUCH COMMANDS



NOISE REDUCTION

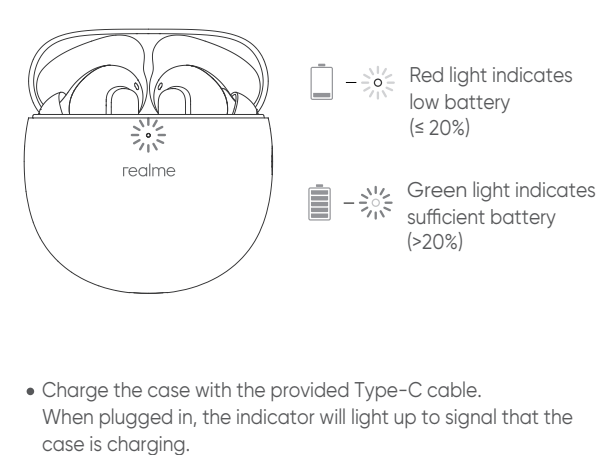
When in noise reduction mode, the realme Buds Air Pro collects external noise through a built-in microphone, which is then neutralized by generating an equivalent reverse sound wave. When in transparency mode, the realme Buds Air Pro collects external sounds, improving your ability to perceive and communicate with your surroundings without taking the earbuds off. The noise reduction function can reduce, but not eliminate, low-frequency noise. If you feel that the noise reduction function isn't working for you, select some appropriate earplugs to improve your experience.

Use with realme Link

Users can download realme Link to install firmware updates and additional features for their Buds Air Pro. To download and install the realme Link app, search for it on your app store or scan the QR code below. realme Buds Air Pro is only available on the android terminal and with realme Link.



CHARGING



SPECIFICATIONS

Product No.	RMA210
Bluetooth Version	Bluetooth 5.0
Bluetooth Protocol	HFP/A2DP/AVRCP
Bluetooth Codec	SBC, AAC
Operating Frequency	2.402~2.480GHz
Max Transmit Power	< 13 dBm (For Europe)
Charging Port	Type-C
Battery Life*	Without Noise Reduction: 6 hours (earbud) / 25 hours (with charging case) With Noise Reduction: 4.5 hours (earbud) / 18 hours (with charging case)
Charge Time	2 hrs
Bluetooth Range	≤ 10 m

*Battery life was tested through AAC playback at 50% volume. Actual battery life will depend on usage scenarios. Data was collected from realme lab testing and may differ from actual usage.

WARRANTY

Thank you for purchasing realme products. If any manufacturing defect problems occur within 24 months from the date of purchase, user can enjoy our company's warranty service.

Matters Needing Attention:

- When you buy the product, the sales unit will issue a valid proof of purchase.
- The warranty card and the proof of purchase should be kept by the user properly, and it will not be replaced if lost.
- If the product fails due to non-human factors, the user can present the warranty card and proof of purchase to the realme customer service center for free maintenance during the warranty period.

Non-warranty situation:

This warranty does not cover the following cases:

- Out of warranty period.
- Damage caused by use not in accordance with the instructions.
- Damage caused by man-made causes.
- Failure caused by unauthorized disassembly, maintenance, or modification of the product.
- Damage caused by force majeure factors (such as floods, earthquakes, lightning, etc.).
- There is no warranty card, invoice, or warranty card that does not match the invoice information.
- The product wears naturally.
- Other failures and damages that are not caused by the quality of the product itself.

Website: www.realme.com

WARRANTY CARD (STUB)

Dear user, thank you for using the product of our company. Please read and keep properly the warranty card after purchasing the product so that we can provide better services to you.

User Info

User's name

Phone Number

Address

Email

Product Information

Product Model

Product Serial Number

Sales Information

Purchase Date

Invoice Number

Sales Unit

Phone Number

Address

WARRANTY CARD (CUSTOMER COPY)

Dear user, thank you for using the product of our company. Please read and keep properly the warranty card after purchasing the product so that we can provide better services to you.

User Info

User's name

Phone Number

Address

Email

Product Information

Product Model

Product Serial Number

Sales Information

Purchase Date

Invoice Number

Sales Unit

Phone Number

Address

SAFETY

Safety caution

- Do not place this product in the liquid environment or exposed to high humidity environment.
- Do not beat, extrude, throw the products to avoid damaging it. Keep out of children's reach to avoid ingestion and twinning which can cause serious injury.
- Do not attempt to disassemble the product. For long time storage, please leave it in a cool and dry place.
- Keep the device dry. Avoid dusty, damp, and dirty environments. Using the device in these environments may damage the device's electronic circuitry.
- Do not use the device during thunderstorms. As thunderstorms may cause equipment malfunction or a shock hazard.
- Keep using your device in environments between 0°C to 45°C, extreme heat or cold may damage your device.
- Do not expose your device to high temperatures or heating equipment such as heaters, microwaves, ovens, water heaters or strong sunshine. Excessive head exposure may cause the device to explode.
- Do not disassemble or modify the device, insert foreign objects, or immerse in water or other liquids to prevent leakage, overheating, fires or explosions.
- Do not attempt to burn the device as it may explode.
- Dispose of your device according to local regulations. Improper disposal may cause explosions. Follow your local laws and regulations on how to properly recycle your device.
- Place the device out of the reach of children or pets to prevent injury.
- Do not drop, crush, or puncture your device to avoid short-circuiting and overheating.

Safety information

- The appliance is suitable for use together with IT equipment only.
- The appliance is suitable for moderate climates only.
- The ventilation must not be impaired by covering the appliance with items such as newspapers, table cloths, curtains, etc.
- Naked flame sources, such as candles, must not be placed on the appliance.
- The appliance and the mains-socket must all times be easily accessible.
- In case of broken cords or plugs the appliance must be disposed.
- The appliance does not require much attention. If you want to clean it, please use only dry clothes or a brush.
- A battery subjected to extremely low air pressure that may result in an explosion or the leakage of flammable liquid or gas.

EU Declaration of Conformity (DoC)

Heretby, realme, declares that this device is in compliance with the essential requirements and other relevant provisions of Radio Equipment Directive 2014/53/EU. The declaration of conformity may be consulted at www.realme.com/global/support/eu-declaration.

SAFETY

Safety symbol

This symbol on the device, batteries (if included), and / or the packaging, indicates that the device and its electrical accessories (for example, a earphone, adapter or cable), and batteries (if included) should not be disposed of as household garbage.

FCC ID: 2AUUFRMA210

FCC Regulatory Compliance

changes or modifications not expressly approved by the party responsible for compliance could void the user's authority to operate the equipment.

This equipment has been tested and found to comply with the limits for a Class B digital device, pursuant to Part 15 of the FCC Rules. These limits are designed to provide reasonable protection against harmful interference in a residential installation. This equipment generates, uses and can radiate radio frequency energy and, if not installed and used in accordance with the instructions, may cause harmful interference to radio communications. However, there is no guarantee that interference will not occur in a particular installation. If this equipment does cause harmful interference to radio or television reception, which can be determined by turning the equipment off and on, the user is encouraged to try to correct the interference by one or more of the following measures:

- Reorient or relocate the receiving antenna.
- Increase the separation between the equipment and receiver.
- Connect the equipment into an outlet on a circuit different from that to which the receiver is connected.
- Consult the dealer or an experienced radio/TV technician for help.

This equipment complies with FCC radiation exposure limits set forth for an uncontrolled environment. This transmitter must not be co-located or operating in conjunction with any other antenna or transmitter. This device complies with Part 15 of the FCC Rules. Operation is subject to the following two conditions: (1) this device may not cause harmful interference, and (2) this device must accept any interference received, including interference that may cause undesired operation.

This equipment complies with FCC radiation exposure limits set forth for an uncontrolled environment. End user must follow the specific operating instructions for satisfying RF exposure compliance. This transmitter must not be co-located or operating in conjunction with any other antenna or transmitter. The portable device is designed to meet the requirements for exposure to radio waves established by the ISED. These requirements set a SAR limit of 1.6 W/kg averaged over one gram of tissue. The highest SAR value reported under this standard during product certification for use when properly worn on the body.



Realme Chongqing Mobile Telecommunications Corp., Ltd.
No.178 Yulong Avenue, Yufengshan Yubei District, Chongqing, China