

尺寸:600*125MM

SMART.LIGHT Bluetooth Motion Monitor



Instruction&Warranty

Please read the manual carefully before using the product. Thank you for purchasing DOGNESS smart products. For your safety and benefit, please read the instruction manual carefully before using the product. If you fail to follow the instructions or do not follow the precautions, DOGNESS will not be liable for any personal injury, property or other loss except as expressly provided by law.

About Instruction Manual
The authorization, trademark and brand name of the manual belong to DOGNESS and other related parties. If the contents of the manual are inconsistent with the actual products (including App), the actual products for App shall prevail. DOGNESS reserves the right to interpret and modify the instructions within the scope permitted by law. If you have any objection to any content or terms of the instruction manual, please make a written objection to DOGNESS within 7 days after the purchase, otherwise you are deemed to have agreed, understood and accepted all contents of the instruction manual.

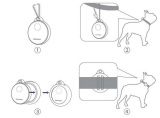
Authorization statement
This App (DOGNESS) respects and protects the personal rights of all users who use the service. In order to provide you with more accurate and personalized services, the App will use and share your personal device operation rights according to the authorization. This application will use this information with a high degree of confidentiality and prudence. Except as otherwise provided in this License, this application will not disclose or provide any information to third parties without your prior permission.

Users who share your authorization will have all the rights to use smart devices, such as camera, photo, listen, etc. If you decide to authorize, it means that you are fully aware and have fully understood the above terms. Therefore, the company does not assume any form of responsibility for any personal privacy leakage, relationship disputes, property, credit and other losses caused by sharing the authorization. Please use the authorization function with caution.

The company has the final interpretation of the license terms and has the right to immediately terminate the service agreement with the authorized users.

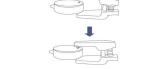
Specification:
Model:CS5
Material:plastic ABS
Bluetooth:BLE 4.2 Class 2
Cell type: lithium polymer
Battery capacity:70mAh
Product dimensions:30*18*10mm
Device requirements: Bluetooth 4.0 enabled Android 4.4 or iOS 7.0 or above devices
Power consumption:
Battery life: 15 hours for Bluetooth connection and 25 days for offline connection
Working hours: 4 hours
Charging time: 2.5-3 hours
Function:
1. Alarm reminder: if the distance between the device and the mobile phone exceeds 40-50m, automatic alarm reminder will be given, without any obstacles, depending on the mobile phone

2. RGB lamp color mixing, lighting effect as you wish.
3. Sports Data Monitoring
(1) Monitor and record your pet's activity, vigorous activity
(2) Monitor and record your pet's sleep status, deep sleep
4. QR code search, through the internet platform equipped in First Aid pet;
5. Waterproof level: high
6. Dust proof level: Mid-high



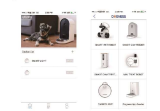
Packing list:
Main body *1, hanging chain *1, silicone sleeve *1, USB charging clip *1, product manual, warranty card *1

Warning instructions:
1. Take out body of the Smart Optical Bluetooth Motion Monitor and the hanging chain from the package, connect the monitor with the hanging chain, open the lobster clasp at one end of the chain, and tie the chain to the appropriate position of the pet's collar or harness, and adjust the chain length according to the pet's size. (Illustrated)



APP operating instructions:

1. Download APP: create account (same as the feeder page)
2. First turn on the Bluetooth of the mobile phone and enter the APP main page. Enter your email-phone number and password to go to the app main page, click the "+" button in the upper right corner of the screen, a device list should appear, select which product you have and follow the instructions displayed on the screen. Hold up the QR code on your mobile phone up to the device to pair the device with your phone, the device will automatically pair and connect, follow the prompts on your screen until the connection is successful.



3. After the connection is successful, select or add a pet, click Finish to enter the operation guide page.
4. After the end of the guidance, enter the home page of the device, and you can set some product settings for Smart OptiCal. Set the date, select whether to turn on the light, Bluetooth disconnection alarm, share the activity of pets, etc. When the Bluetooth disconnection alarm is turned on, once the pet leaves the safe range, the alarm will automatically alert the owner.
5. Through the setting options in the upper right corner of the page, you can set some product Settings for the Smart Optical, change the activity goal of the pet, set the lighting effect of the product, and upgrade the firmware of the product, etc.



6. If you don't need the device, you can unbind the product.

Instructions for co-search function:
1. Follow Dogness WeChat official account, enter the official account, click the co-search platform, input the account password is the same as the APP account password.
2. Perfect the data of your pet after logging in.



3. After complete information entry, enter the main page, click "my co-search" to release co-search information;
4. When someone finds your pet and scans the QR code on the back of the Smart Optical Bluetooth Motion Monitor, the owner will receive the current location information of the pet and establish contact with the caring person. Let your pet come back to you as soon as possible.



Common problems of The Smart Optical Bluetooth Motion Monitor

1. Can the Smart Optical Bluetooth Motion Monitor cause radiation damage? Can long-term use cause harm to the pet's body?
Smart Optical adopts Bluetooth technology with low power consumption. The radiation value of the product is far below the standard of Bluetooth wireless, which is less than 1/1000 of the signal strength of mobile phone. After more than ten years of research and general investigation by the world health organization, Bluetooth signal has not been found to have any effect on humans or pets. Please feel free to use it.

2. According to what principle does Smart Optical Bluetooth Motion Monitor detect activity data?
The Smart Optical Bluetooth Motion Monitor uses ultra-low-power accelerometers and combines top-level motion algorithms to analyze and count the collected data, ultimately showing accurate and experienced activity information.

3. What is IP67 waterproof?
IP67 refers to the protection level of the mobile phone industry. It defines the ability of a product to protect against liquid and solid particles.

The meaning of the two digits after IP is: The first number represents the dust rating and the second number represents the waterproof rating. Such as 2+7 waterproof level, IP67, with 6 levels of waterproof 7 level waterproof protection.

4. Can I take a bath or swim with the Smart Optical Bluetooth Motion Monitor?
No. Due to the main target mobile phone of mobile power, the charging current is about 1A. When the mobile phone is fully charged, it enters the trickle charging state, and the charging current will become very small. At this time, some mobile power will turn off the charging to save power.

5. Does charging need to be charge for 12 hours on the first charge?
The Smart Optical uses a lithium polymer battery, which has no memory effect of nickel-cadmium batteries, and can be used as needed.

6. Can the Smart Optical be charged with mobile power? Why?
No. Due to the main target mobile phone of mobile power, the charging current is about 1A. When the mobile phone is fully charged, it enters the trickle charging state, and the charging current will become very small. At this time, some mobile power will turn off the charging to save power.

7. Does The Smart Optical need to log in to use the account?
Smart Optical needs to bind the client Dogness App and use the user account to log in to the Dogness App for data collection and synchronization.

8. If the User account login for the Dogness App fails, what can I do?
The login failure is related to the current network environment. Please try to solve by replacing the network environment (switching WiFi/data traffic).

Tip: Make sure your account and password are correct.

9. What if the page prompts for a search for the Smart Optical failure?
First of all, please check if there is power in Smart Optical.
Secondly, please move Smart Optical to the mobile phone, the closer the better;

10. How to synchronize data? How to handle the connection failure when synchronizing data?
If the auto operation still does not work, please try to switch the phone Bluetooth once or restart the phone.
(1) When you open the Dogness App, automatically syncs. You can also sync from the drop-down list of messages on the main interface of the Dogness (2). If the connection fails when syncing, try the following:

First, you can try the pull-down sync operation again. Secondly, please end the Dogness App and re-enter it. If it doesn't work, please switch the phone to Bluetooth or restart the phone. You can also try clearing the Bluetooth sharing information in your phone settings before restarting your phone.

Tip: For Apple users, please check the "Dogness" device in the Bluetooth settings table of the mobile phone, click and ignore the device, then restart the switch to Bluetooth or reset the phone.

11. Do I need to keep my smart phone Bluetooth on all the time?
No. Bluetooth technology is a non-connection. In order to make the product more comfortable to use, it is recommended to turn off other Bluetooth devices when using this product.

Pets only need to bring wisdom light when exercising, and then connect wisdom light and mobile phone to use data synchronously after exercise.

12. Can Smart Optical record and store data when the mobile phone is not around? How long can I store the data?
Smart Optical can store data separately, so your pet doesn't have to carry a phone when he or she is out running or sleeping. To synchronize your data, simply turn your phone Bluetooth on and connect it to.

13. When does Smart Optical start recording nighttime sleep?
Smart Optical can automatically recognize sleep and also distinguish between sleep and deep sleep.

14. Can Smart Optical record sleep during the day?
Yes.

New Bluetooth technology is a non-connection. In order to make the product more comfortable to use, it is recommended to turn off other Bluetooth devices when using this product.

This Limited Warranty does not affect your statutory rights under the laws relating to the sale of consumer products.

OVERVIEW
Dogness Products (listed below) "You", "you", "us" I warrants that, subject to the exclusions and limitations set out below, this Product (including batteries) will be:

good working order during the period of one (1) year from the date of purchase (the "Warranty Period"). In the event that the Product fails to meet the warranty standard to our reasonable satisfaction, we will, within a commercially reasonable time, free of charge, either repair or replace the Product as described below.

This Limited Warranty is only valid and enforceable in the country where you purchased the Product, provided that the said country is on the list of Specified Countries. (http://www.dognessgroup.com) defined in the consumer terms of sale which apply when you purchased the Product.

MAKING A CLAIM UNDER THE LIMITED WARRANTY
If you wish to make a warranty claim, please contact your local distributor, whose contact details can be found at <http://www.dognessgroup.com>. Upon contacting your distributor, please have the serial number of your Product ready and the original proof of purchase from an authorized reseller, showing the date of purchase and full details of the product, which has been carried out by you or a third party in the process involved in making a claim.

Any claim under the Limited Warranty is subject to you notifying us (or our authorized service company) within the time limit of the alleged defect within a reasonable time of coming to your attention and, in any case, by no later than the expiry of the Warranty Period.

REMEDY
If a claim is received within the Warranty Period and the Product is found to have failed under the warranty period, as our option:

we shall repair the Product, or
we shall replace the Product with a product that is new, or which has been manufactured from new or reworkable used parts and is at least functionally equivalent to the original product, or
we shall replace the Product with a product that is new and upgraded model which has at least equivalent or upgraded function to the original product.

As far as applicable laws permit, the Warranty Period will not be extended or renewed or otherwise affected due to subsequent exchange, resale, repair or replacement of the Product. However, parts (a) repaired or replaced under the Warranty Period will be warranted for the remainder of the original Warranty Period or for ninety (90) days from the date of repair or replacement, whichever is longer.

Replacement or repaired products, as applicable, will be returned to you as soon as commercially practicable. All parts of the Product or other equipment that we replace shall become our property.

If the Product is found not to be covered by this Limited Warranty, we (and our authorized service company) reserve the right to charge a handling fee, which may include the cost of transportation, and, in any case, by no later than the expiry of the Warranty Period.

WHAT IS NOT COVERED?
Unless agreed in writing, the Limited Warranty will not apply if the defect(s) relate to: (a) normal wear and tear (including, without limitation, wear and tear of batteries); (b) defects caused by rough or inappropriate handling or use or damage caused by accident, misuse, neglect, fire, water, lightning or other external factors.

(c) the fact that the battery has been short-circuited, the seals of the battery enclosure or the cells are broken or show evidence of tampering or if the battery has been used in equipment other than those for which it has been specified,

(d) non-compliance with the Product instructions,

(e) willful or deliberate damage, neglect or negligence,

(f) use of spare parts or other replacement items (including consumables) which are not provided or recommended by us;

(g) any alteration or modification to the Product which has been carried out by you or a third party not authorized by us;

(h) any failure to adequately package the Product for transportation.

(i) external or external causes beyond our reasonable control, including, but not limited to, breakdowns, fluctuations, or interruptions in electric power, GP (Internet service provider) service, or wireless network.

This Limited Warranty does not apply to accessories and other consumable items, such as filters. This Limited Warranty will be void if:

(a) any Product(s) purchased from unauthorized dealers/resellers.

(b) the Product's serial number has been removed, erased, defaced, altered or illegible in any way as determined in our sole discretion; or (c) you are in breach of the terms of this limited warranty or your contract with us.

LIMITATION OF DOGNESS PRODUCTS' LIABILITY
This Limited Warranty is your sole and exclusive remedy against Dogness Products' and Dogness Products' sale and exclusive liability in respect of defects in your Product. This Limited Warranty replaces all other Dogness Products' warranties and liabilities, whether oral, written, (from mandatory statutory, contractual, in text or otherwise, including, without limitation, and where permitted by applicable law, any implied conditions, warranties or other terms of satisfactory quality or fitness for purpose. However, this Limited Warranty shall neither exclude nor limit (a) your legal statutory rights under the applicable national laws or (b) any of your rights against the seller of the Product.

To the extent permitted by applicable law (a) Dogness Products' does not assume any liability for misuse of our Class II user, output below 1.6W, not harmful to humans and should not be pointed at human or pet eyes.

To the extent permitted by applicable law (a) Dogness Products' does not assume any liability for loss of or damage to or corruption of data, for any loss of profit, loss of use of Products or functionality, loss of business, loss of contracts, loss of revenues or loss of anticipated savings, increased costs or expenses or for any indirect loss or damage, consequential loss or damage or special loss or damage.

To the extent permitted by applicable law, Dogness Products' liability will be limited to the purchase price.

value of the Product. The above limitations will not apply in the case of gross negligence or intentional misconduct of Dogness Products' or in the case of death or personal injury resulting from Dogness Products' proven negligence.

To the extent permitted by applicable law, Dogness Products' liability shall be limited to the purchase value of the Product. The above limitations shall not apply in case of gross negligence or intentional misconduct of Dogness Products' or in case of death or personal injury resulting from Dogness Products' proven negligence.

To the extent permitted by applicable law (a) Dogness Products' does not assume any liability for interference to radio or television reception, which can be determined by turning the equipment off and on. The user is encouraged to try to correct the interference by one or more of the following measures:

Reorient or relocate the receiving antenna.
Increase the separation between the equipment and receiver.
Connect the equipment to an outlet on a circuit different from that to which the receiver is connected.

Contact the dealer or an experienced radio/TV technician for help. The device has been evaluated to meet general RF exposure requirements. The device can be used in portable exposure condition without restriction.

FCC Warning

This device complies with part 15 of the FCC Rules. Operation is subject to the following two conditions: (1) This device may not cause harmful interference, and (2) this device must accept any interference received, including interference that may cause undesired operation. Any Changes or modifications not expressly approved by the party responsible for compliance could void the user's authority to operate the equipment. This equipment has been tested and found to comply with the limits for a Class B Digital device, pursuant to part 15 of the FCC Rules. These limits are designed to provide reasonable protection against harmful interference in a residential installation. This equipment generates uses and can radiate radio frequency energy and, if not installed and used in accordance with the instructions, may cause harmful interference to radio communications. However, there is no guarantee that interference will not occur in a particular installation. If this equipment does cause harmful interference to radio or television reception, which can be determined by turning the equipment off and on, the user is encouraged to try to correct the interference by one or more of the following measures:

Reorient or relocate the receiving antenna.
Increase the separation between the equipment and receiver.
Connect the equipment to an outlet on a circuit different from that to which the receiver is connected.

Contact the dealer or an experienced radio/TV technician for help. The device has been evaluated to meet general RF exposure requirements. The device can be used in portable exposure condition without restriction.

Entrusting Party: Dogness Group LLC
Address of Entrusting Party: 4166 W Spring Creek Parkway, Plano, TX 75044

Manufacturer: Jasheng Enterprise Co., Ltd.
Address of Manufacturer: Tongsha New Industry Zone, Tongsha Community, Dongcheng Street of Dongguan City, Guangdong Province, 523217 China

Website: www.dogness.com

Customer Service Hotline: 1-833-Dogness (364-6377)