

TCU2 NA IP30 - internal photo Passport

Docupedia Export

Date:30-Apr-2024 11:01

Table of Contents

1 TCU2 NA IP30 - All Inner views of the housing (each part)	4
2 TCU2 NA IP30 - PCB A Top	6
3 TCU2 NA IP30 - PCB A Bottom	7
4 TCU2 NA IP30 - Radio module in detail from PCB A	8
5 TCU2 NA IP30 - Radio module in detail from PCB A without shielding	9
6 TCU2 NA IP30 - All other inner parts	10
7 TCU2 NA IP30 - Internal photos of Auxillary equipment if applicable	12

Issue	Confidential
Topic	Internal Photo documentation for TCU2 NA IP30
Description	Photo description for Telematic Control Unit

Product Type: Telematic Control Unit

Model Name: TCU2 NA IP30

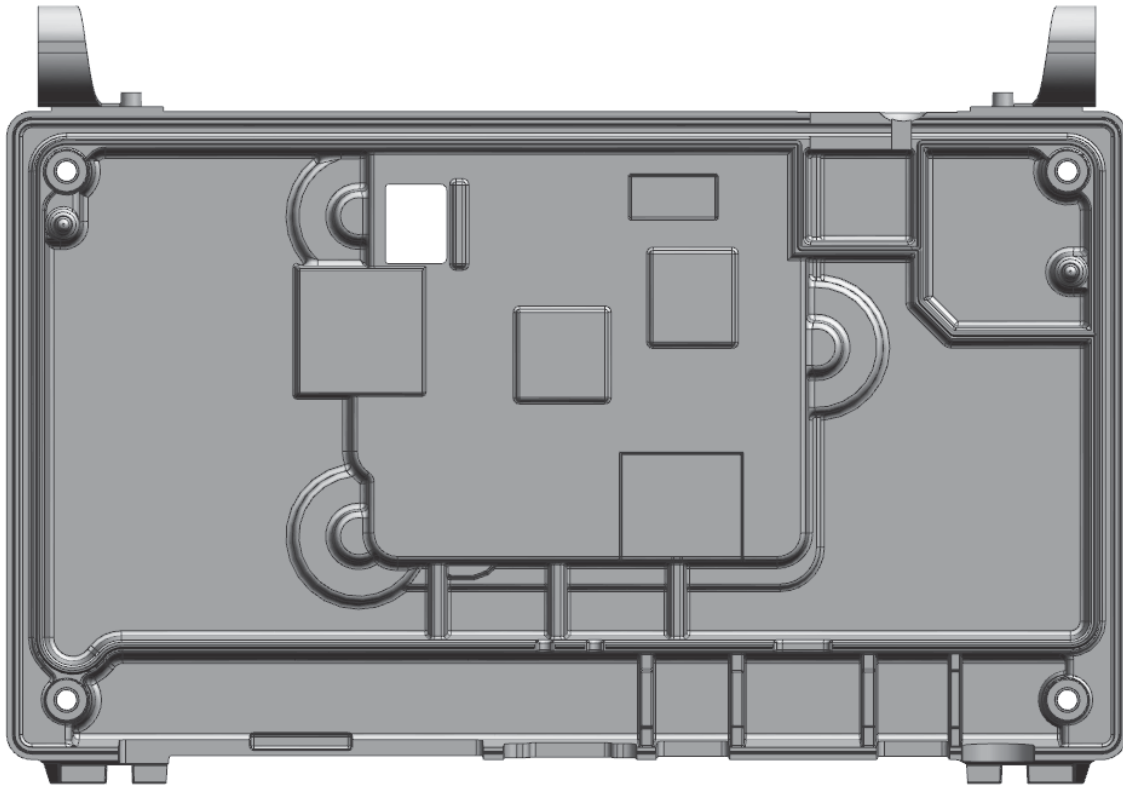
Variants: 1: -

2: -

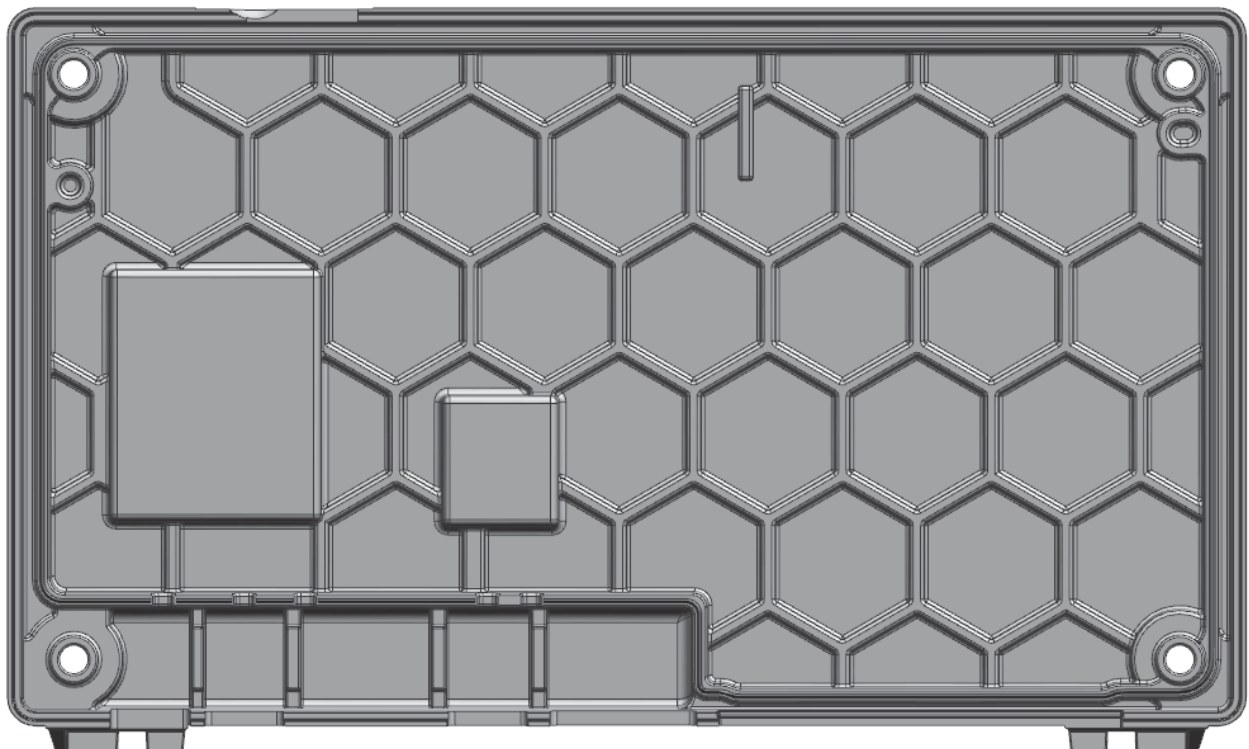
Brand: Bosch

1 TCU2 NA IP30 - All Inner views of the housing (each part)

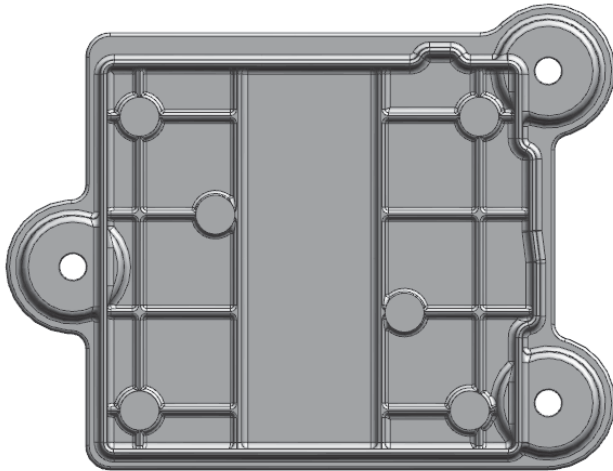
Housing Cover



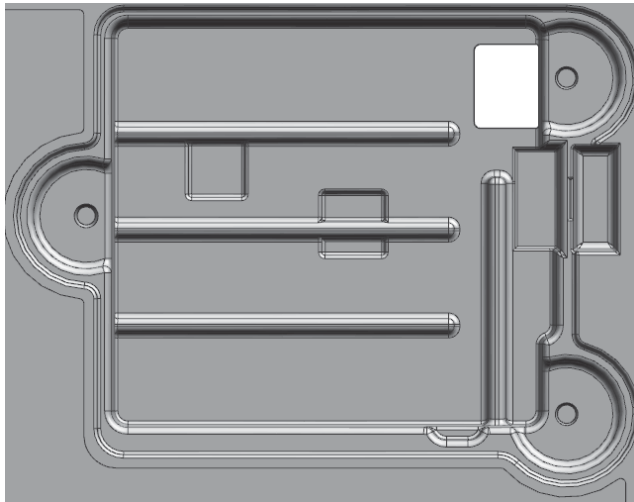
Housing Base



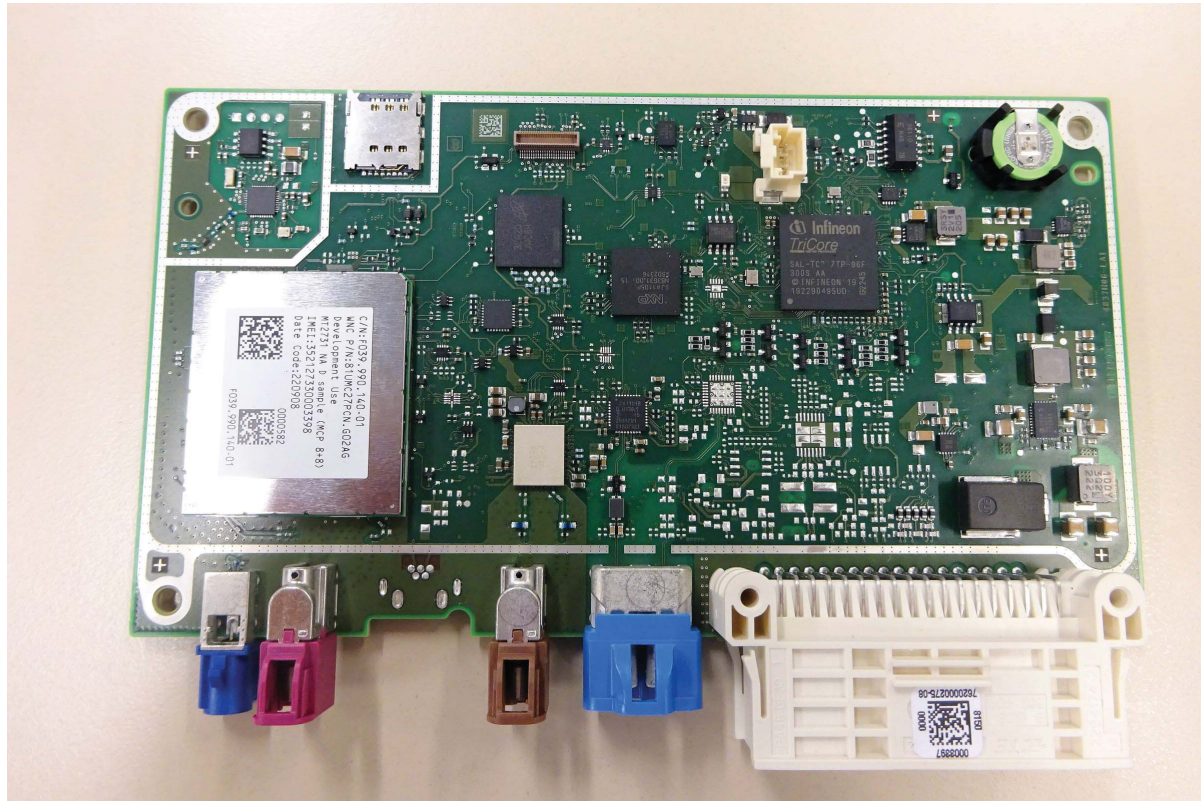
Battery Cover



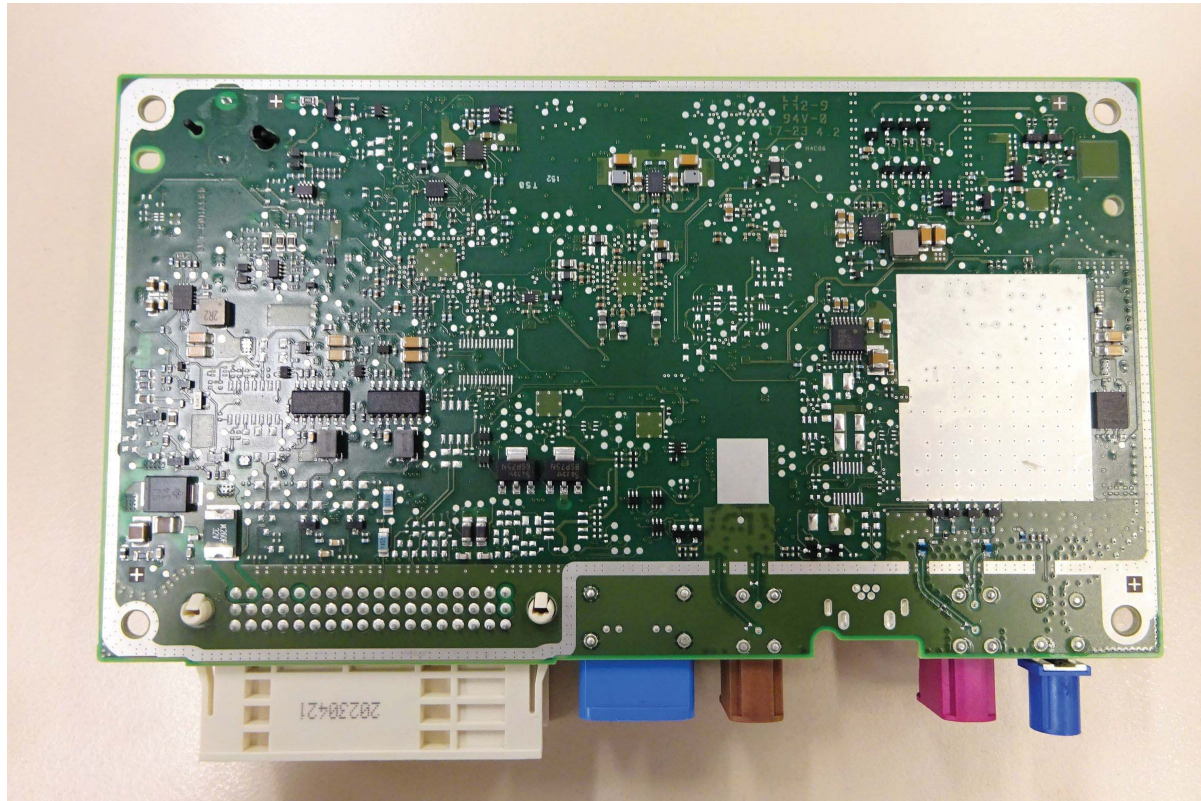
Battery Compartment



2 TCU2 NA IP30 - PCB A Top



3 TCU2 NA IP30 - PCB A Bottom

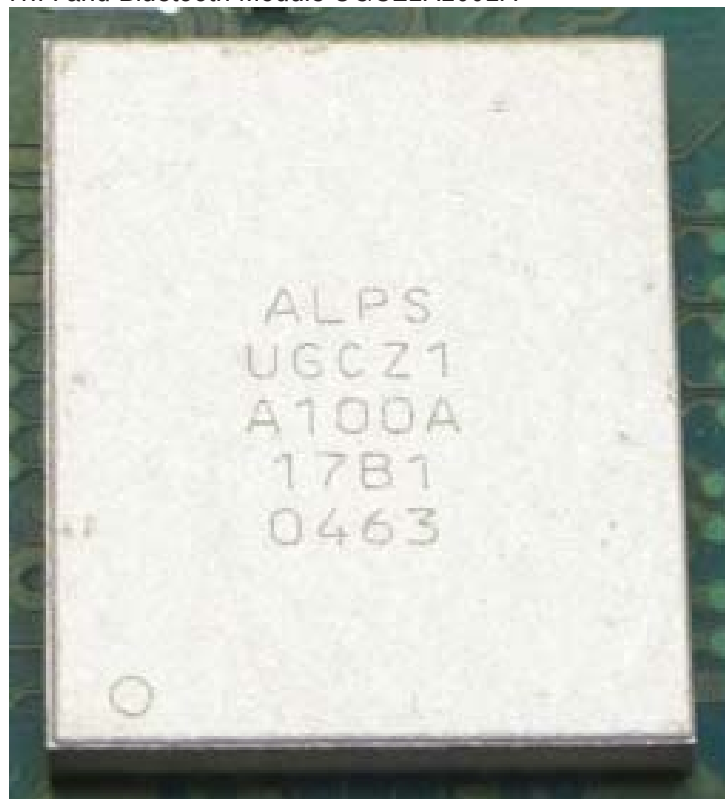


4 TCU2 NA IP30 - Radio module in detail from PCB A

NAD Module UMC-STD31BPN

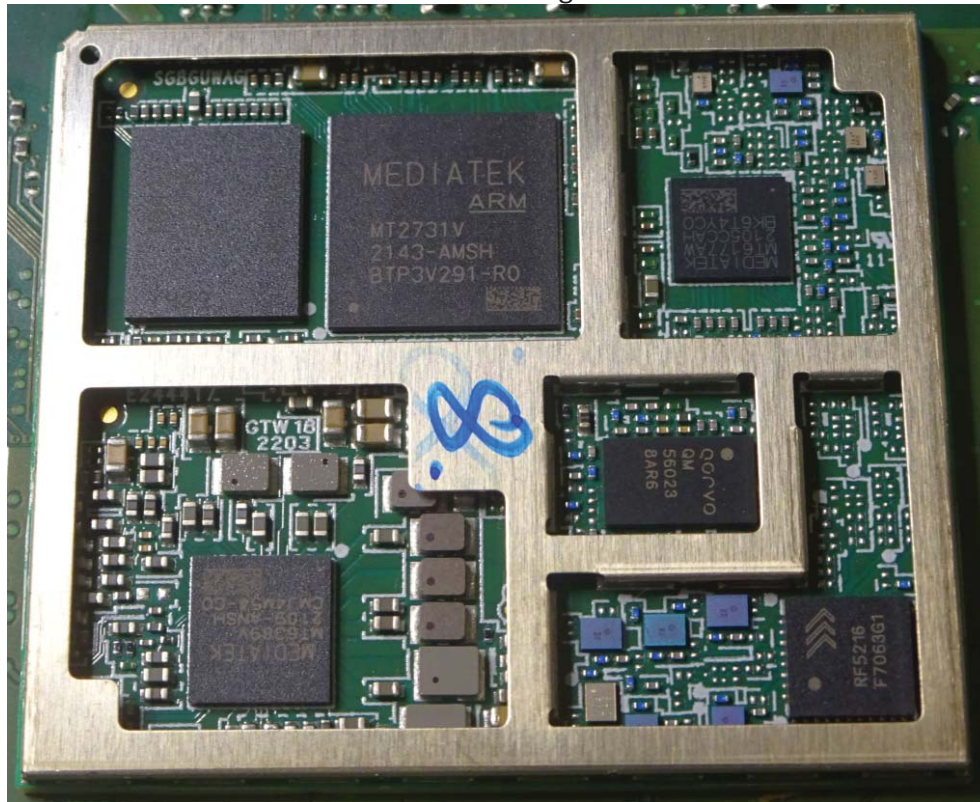


WiFi and Bluetooth Module UGCZ1A1001A



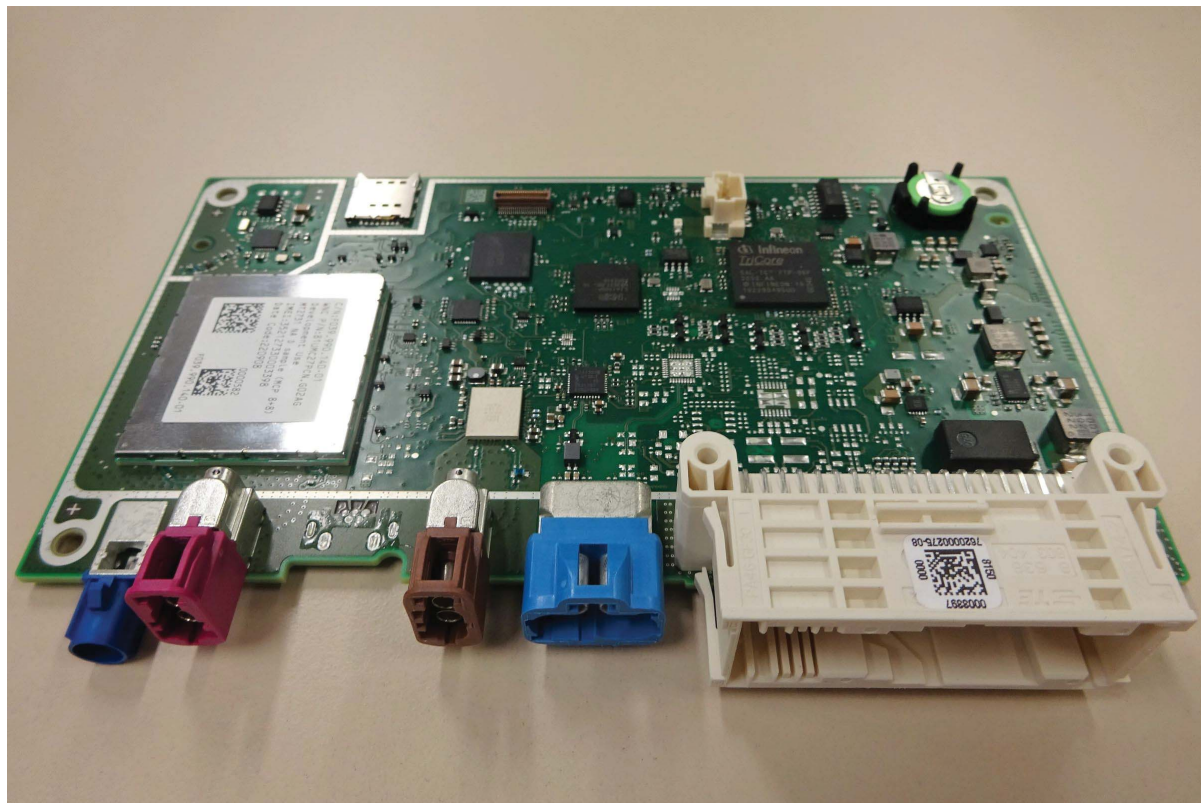
5 TCU2 NA IP30 - Radio module in detail from PCB A without shielding

NAD Module UMC-STD31BPN without shielding



6 TCU2 NA IP30 - All other inner parts

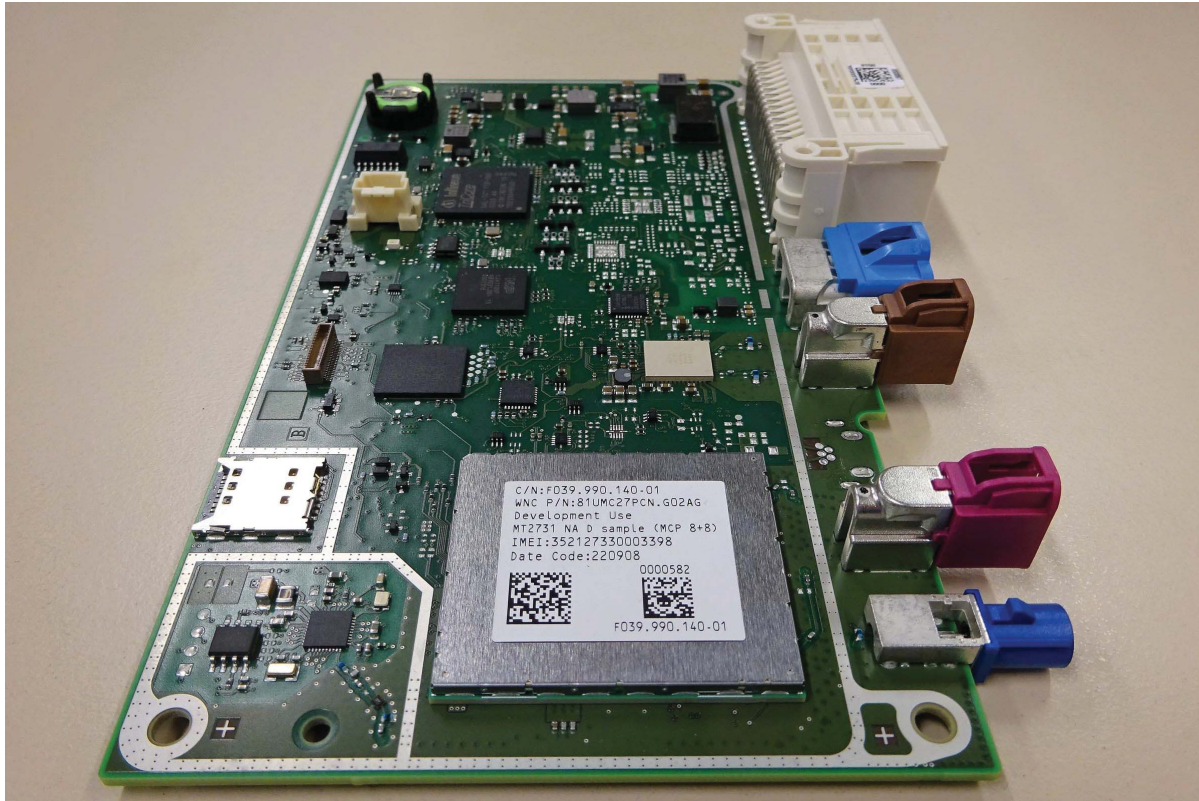
Connector view



Right side of TCU2



Left side of TCU2



7 TCU2 NA IP30 - Internal photos of Auxillary equipment if applicable

Not applicable.