

### 9.6 Intensity diagrams Taoglas PP407096 antenna port1

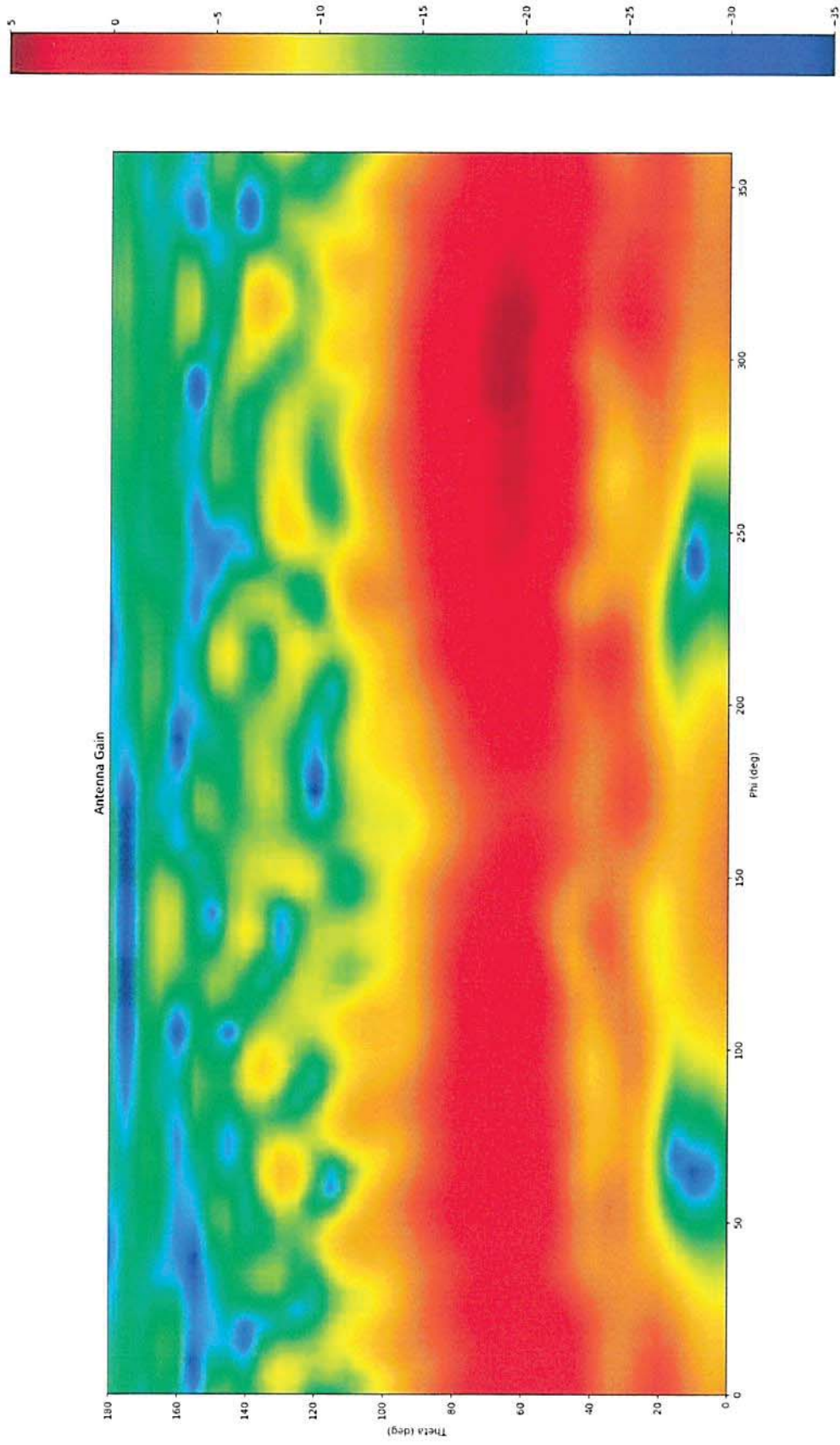


Figure 9-17: E-Theta intensity diagram, port1 @ 2412 MHz

The test results are only related to the items tested. This report shall not be reproduced except in full without the written approval of the testing laboratory.



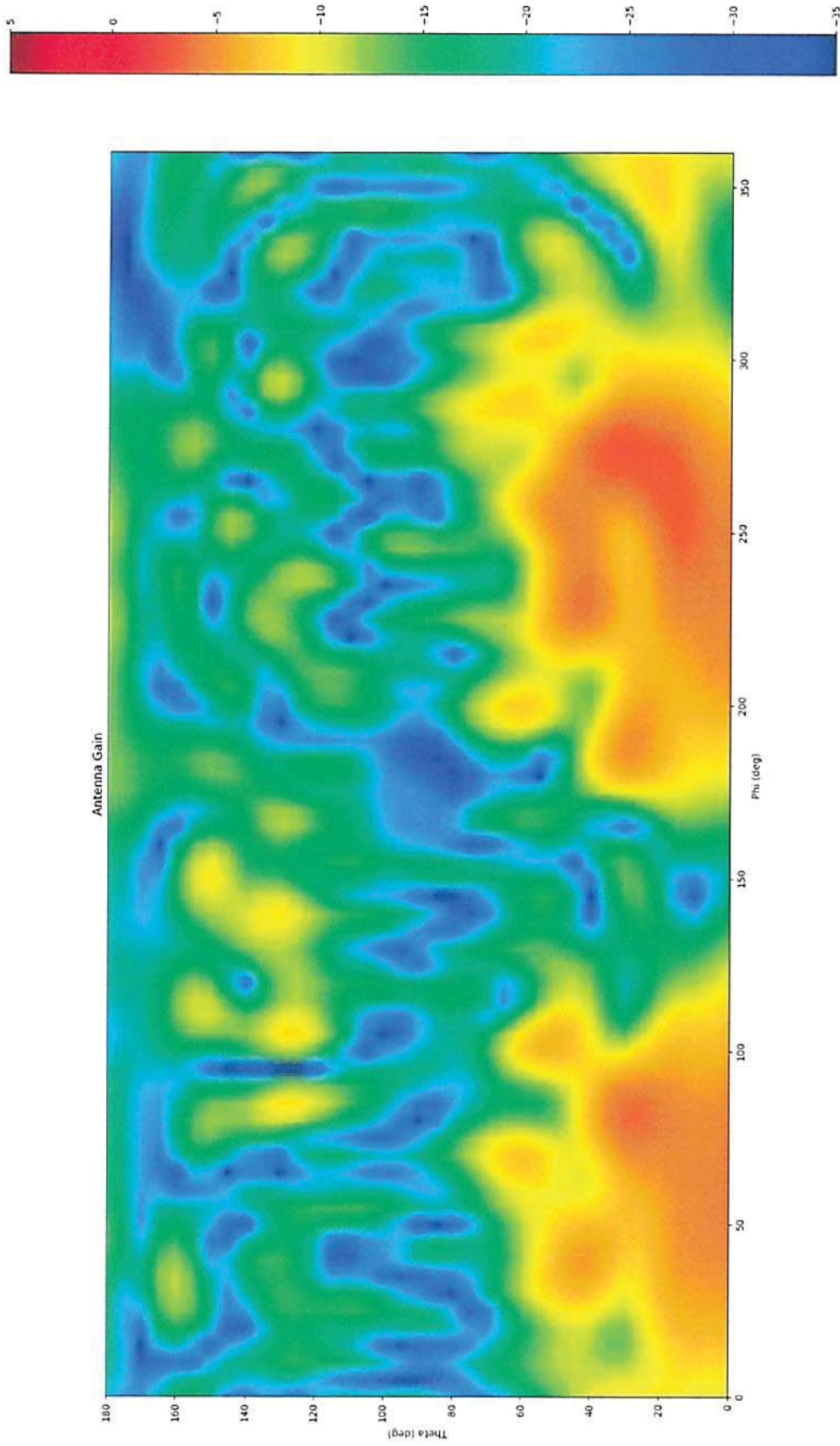


Figure 9-18: E-Phi intensity diagram, port1 @ 2412 MHz

The test results are only related to the items tested. This report shall not be reproduced except in full without the written approval of the testing laboratory.



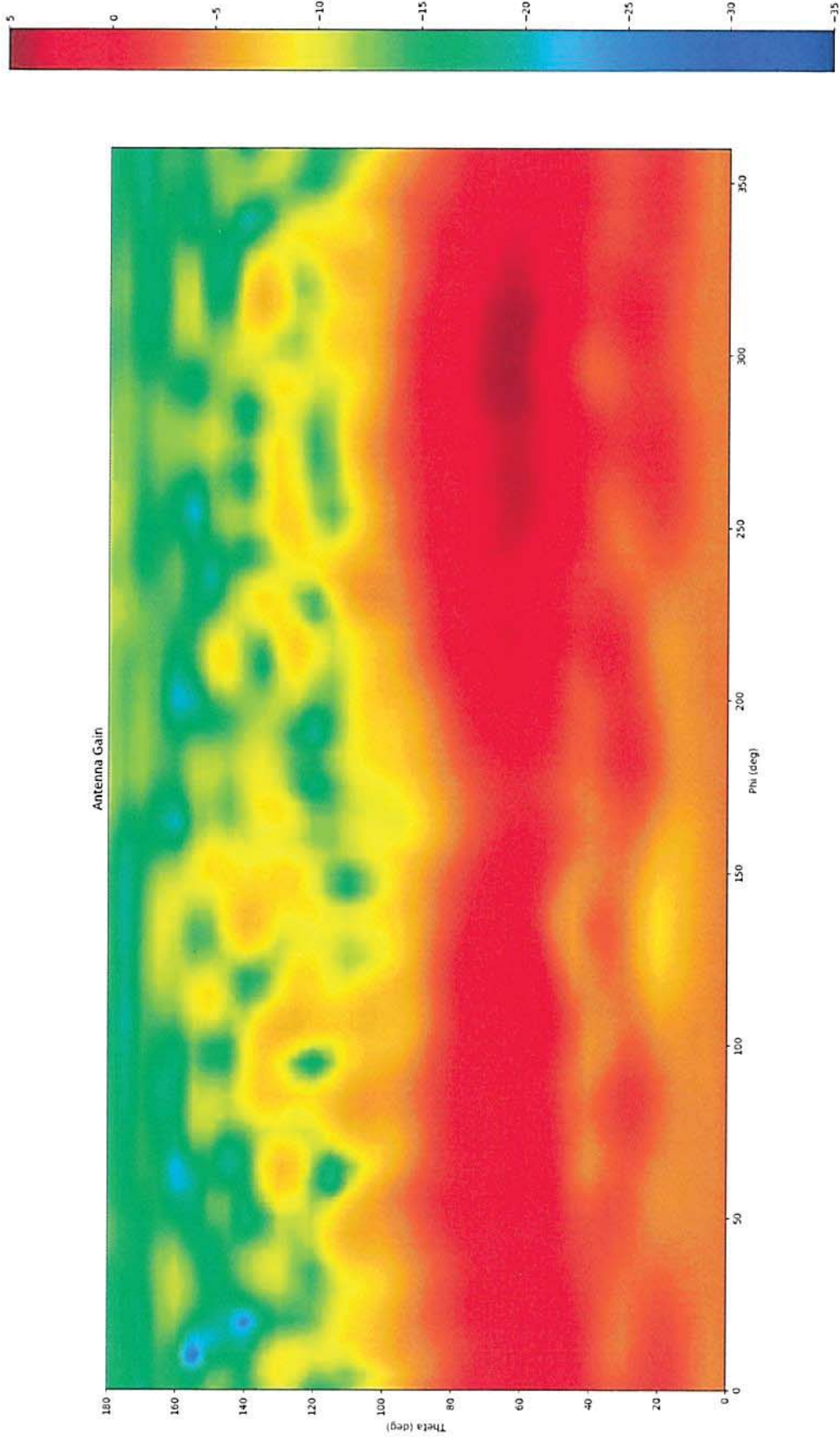


Figure 9-19: Sum intensity diagram, port1 @ 2412 MHz

The test results are only related to the items tested. This report shall not be reproduced except in full without the written approval of the testing laboratory.



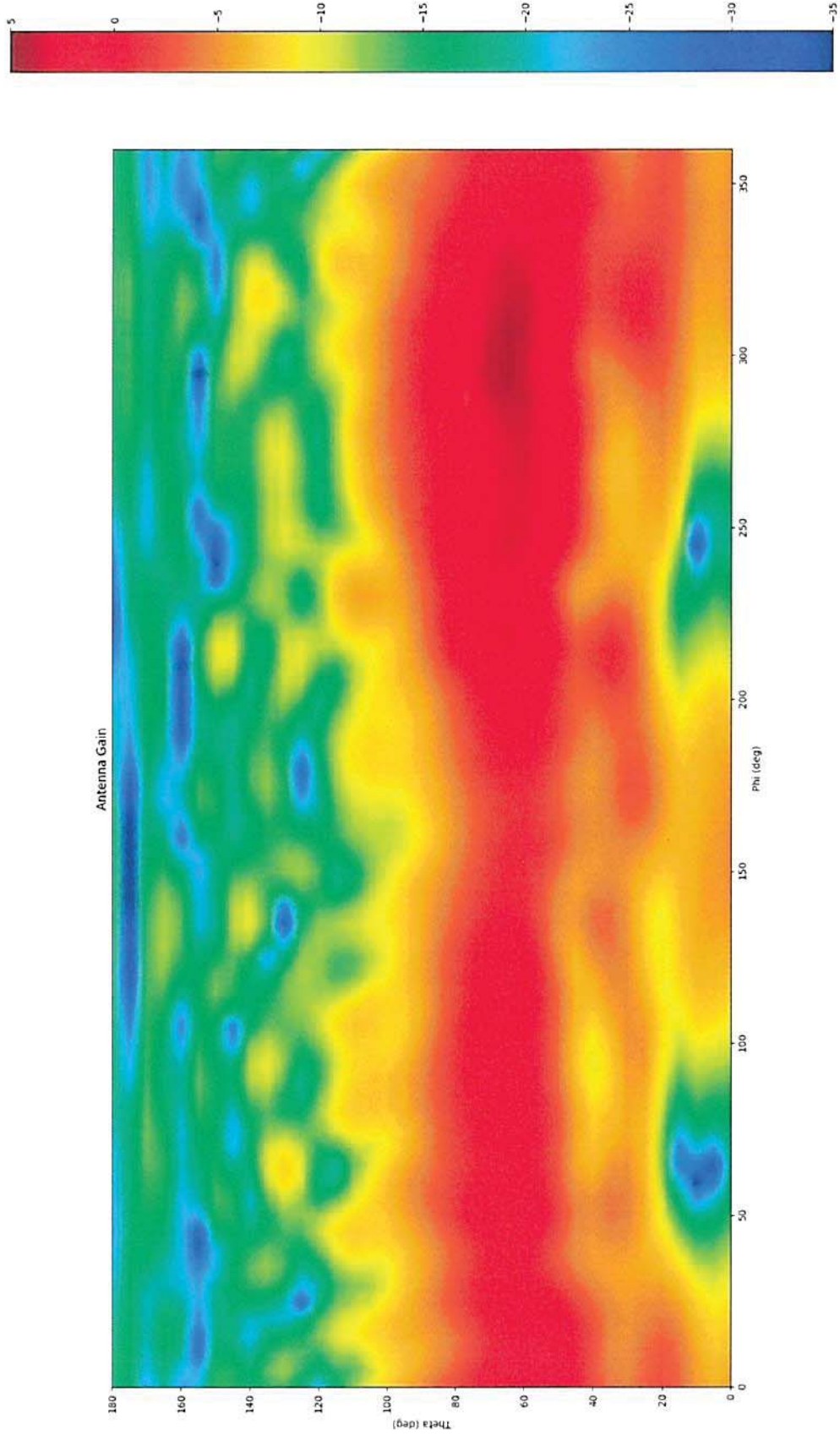


Figure 9-20: E-Theta intensity diagram, port1 @ 2448 MHz

The test results are only related to the items tested. This report shall not be reproduced except in full without the written approval of the testing laboratory.



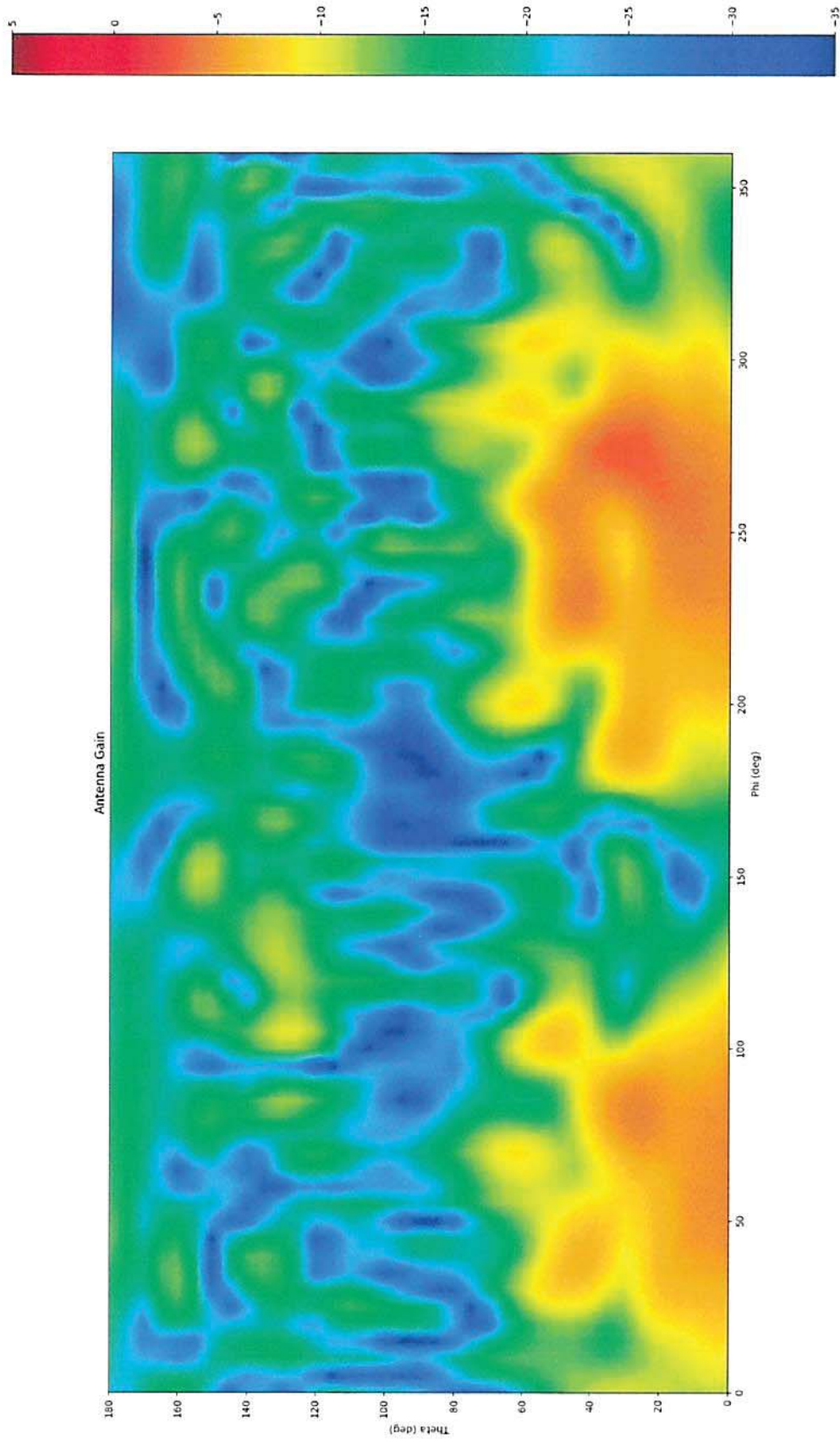


Figure 9-21: E-Phi intensity diagram, port1 @ 2448 MHz

The test results are only related to the items tested. This report shall not be reproduced except in full without the written approval of the testing laboratory.



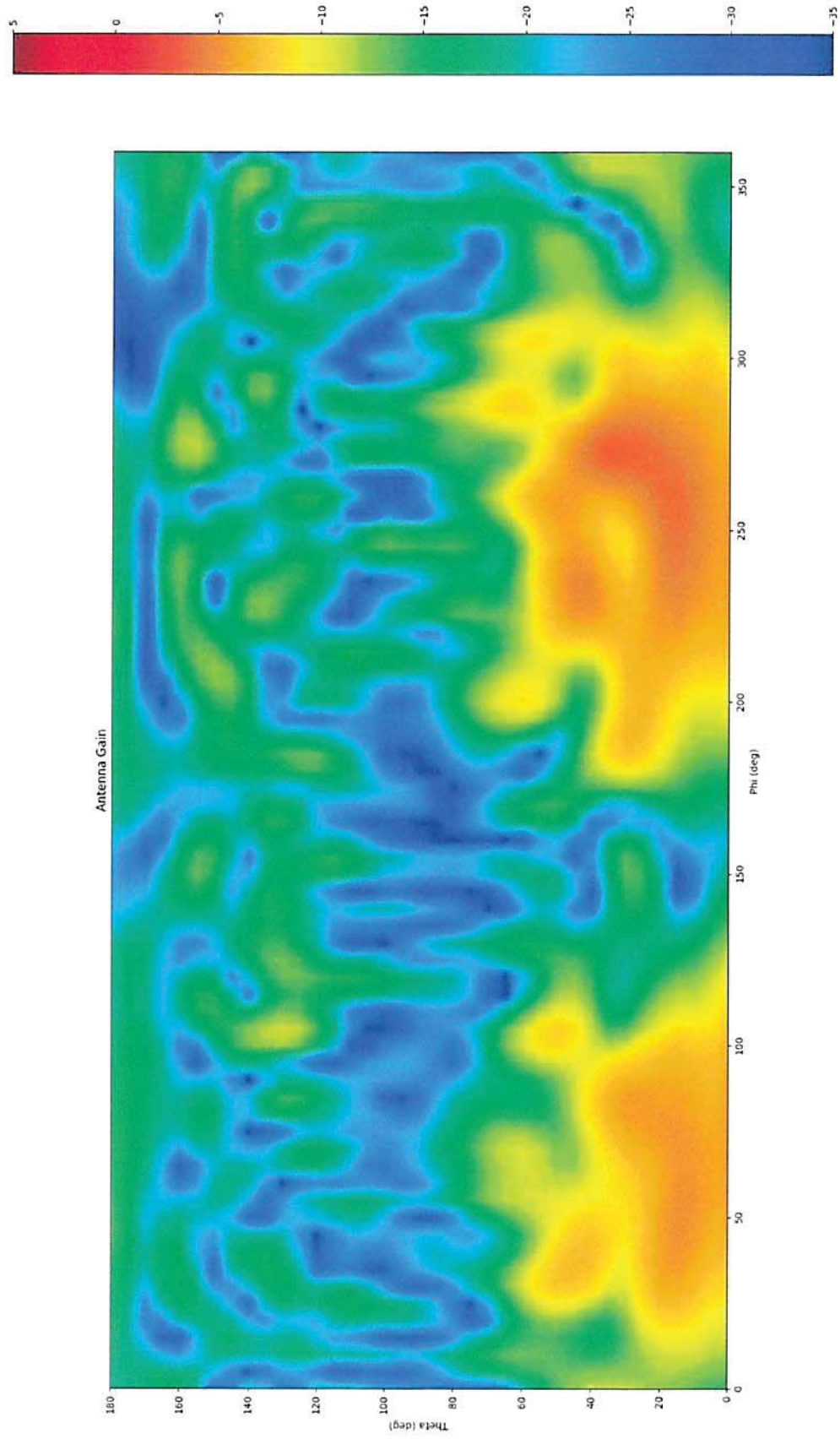


Figure 9-22: Sum intensity diagram, port1 @ 2448 MHz

The test results are only related to the items tested. This report shall not be reproduced except in full without the written approval of the testing laboratory.



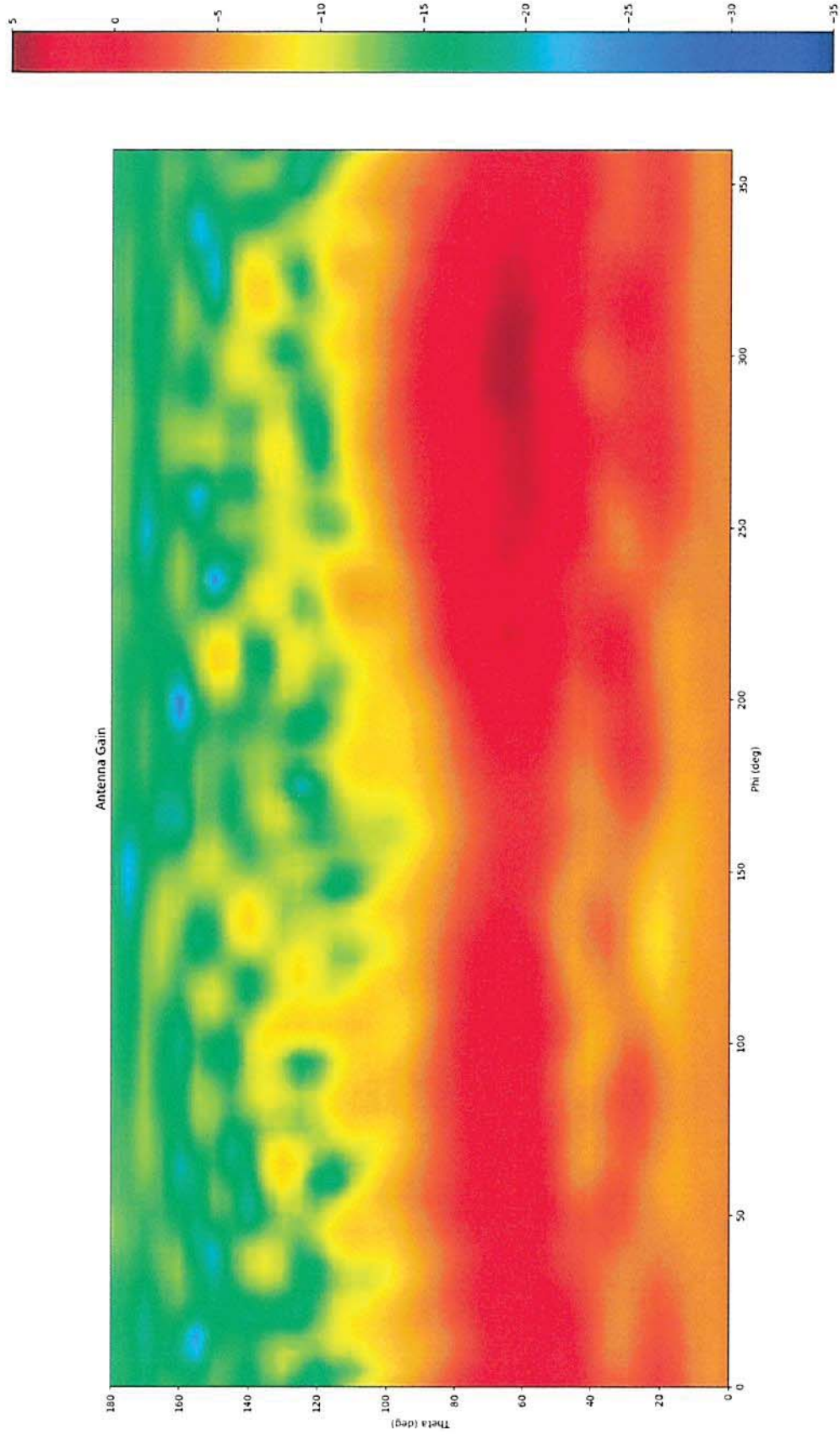


Figure 9-23: E-Theta intensity diagram, port1 @ 2484 MHz

The test results are only related to the items tested. This report shall not be reproduced except in full without the written approval of the testing laboratory.



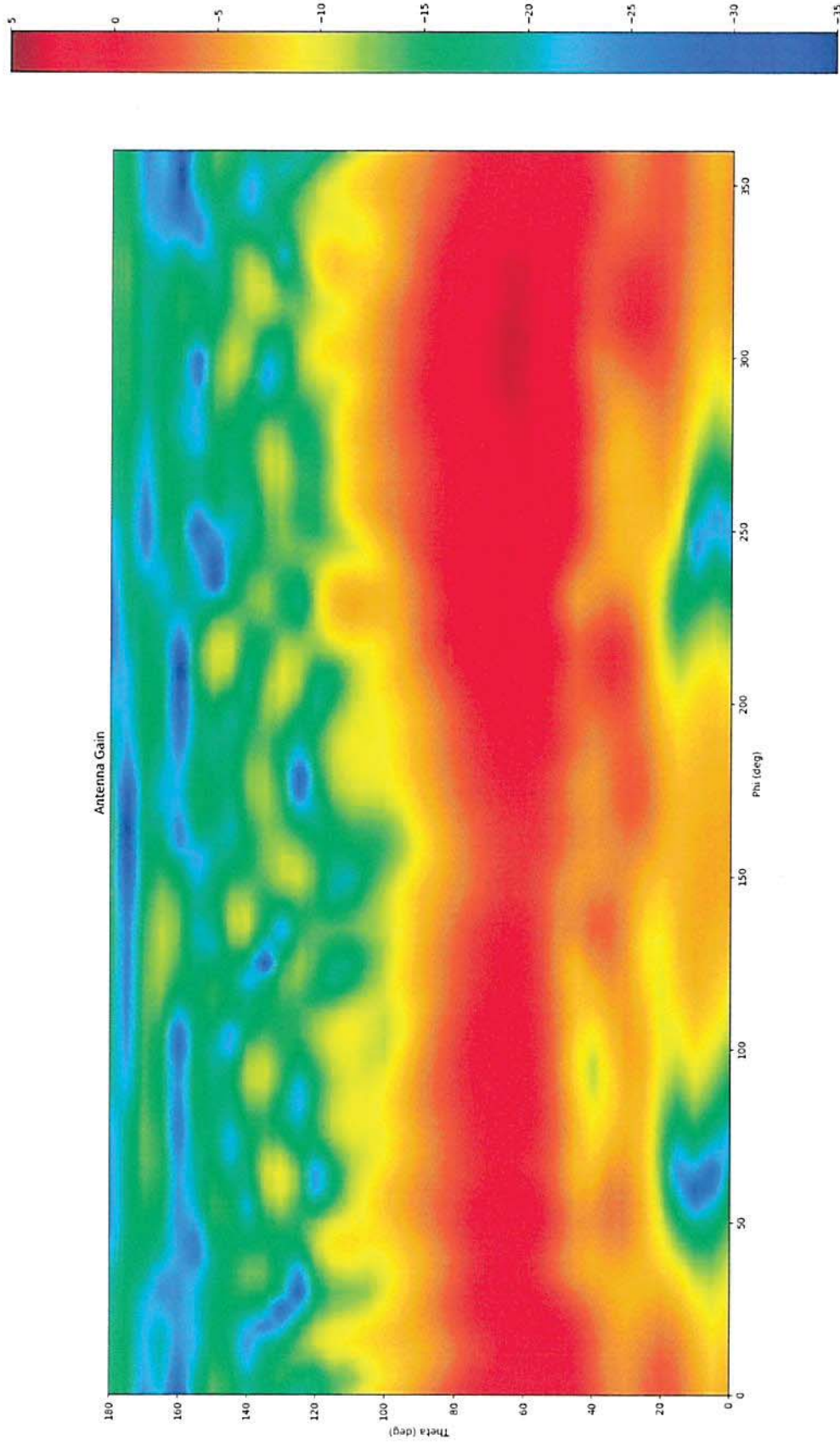


Figure 9-24: E-Phi intensity diagram, port1 @ 2484 MHz

The test results are only related to the items tested. This report shall not be reproduced except in full without the written approval of the testing laboratory.





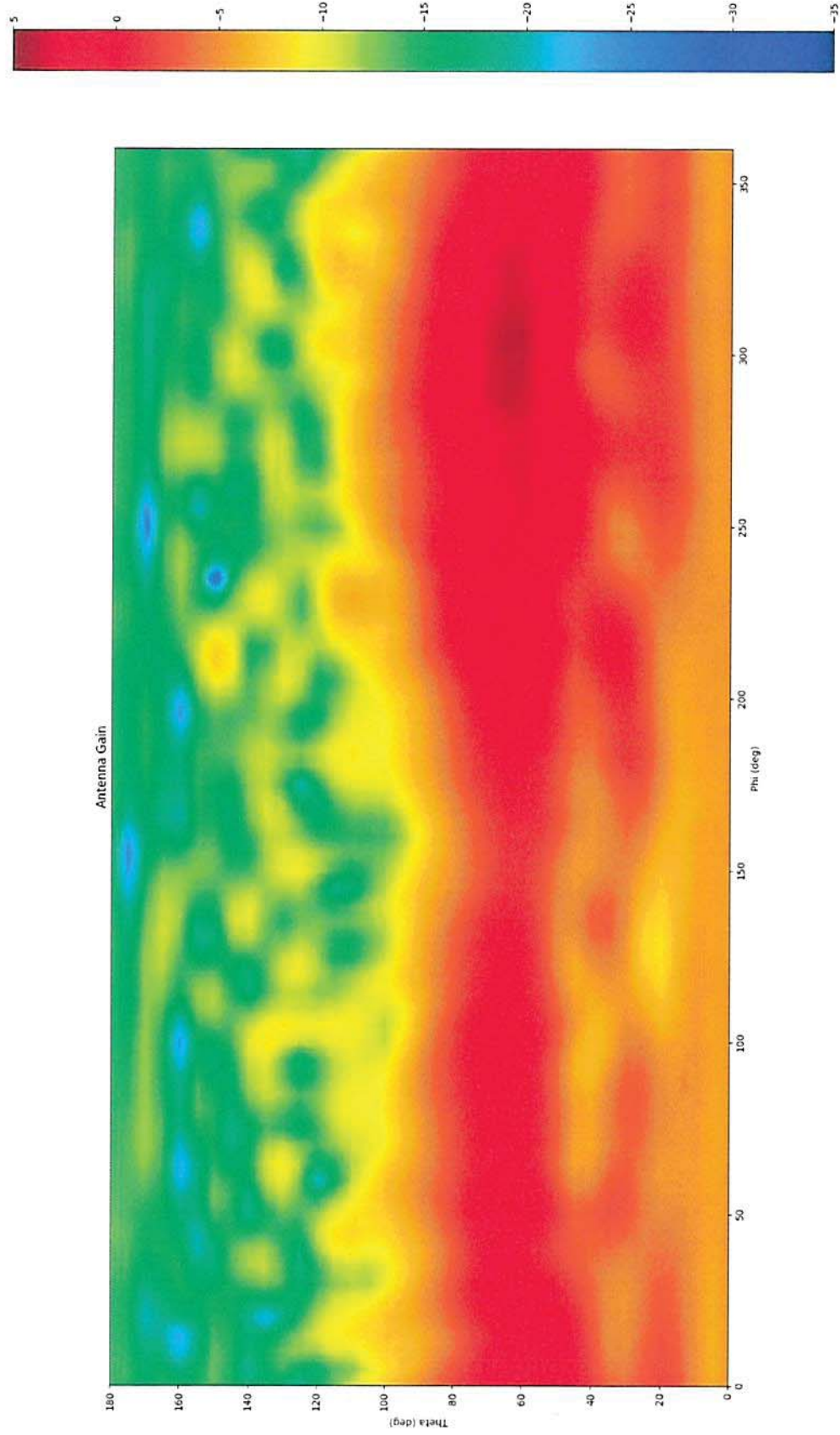


Figure 9-25: Sum intensity diagram, port1 @ 2484 MHz

The test results are only related to the items tested. This report shall not be reproduced except in full without the written approval of the testing laboratory.



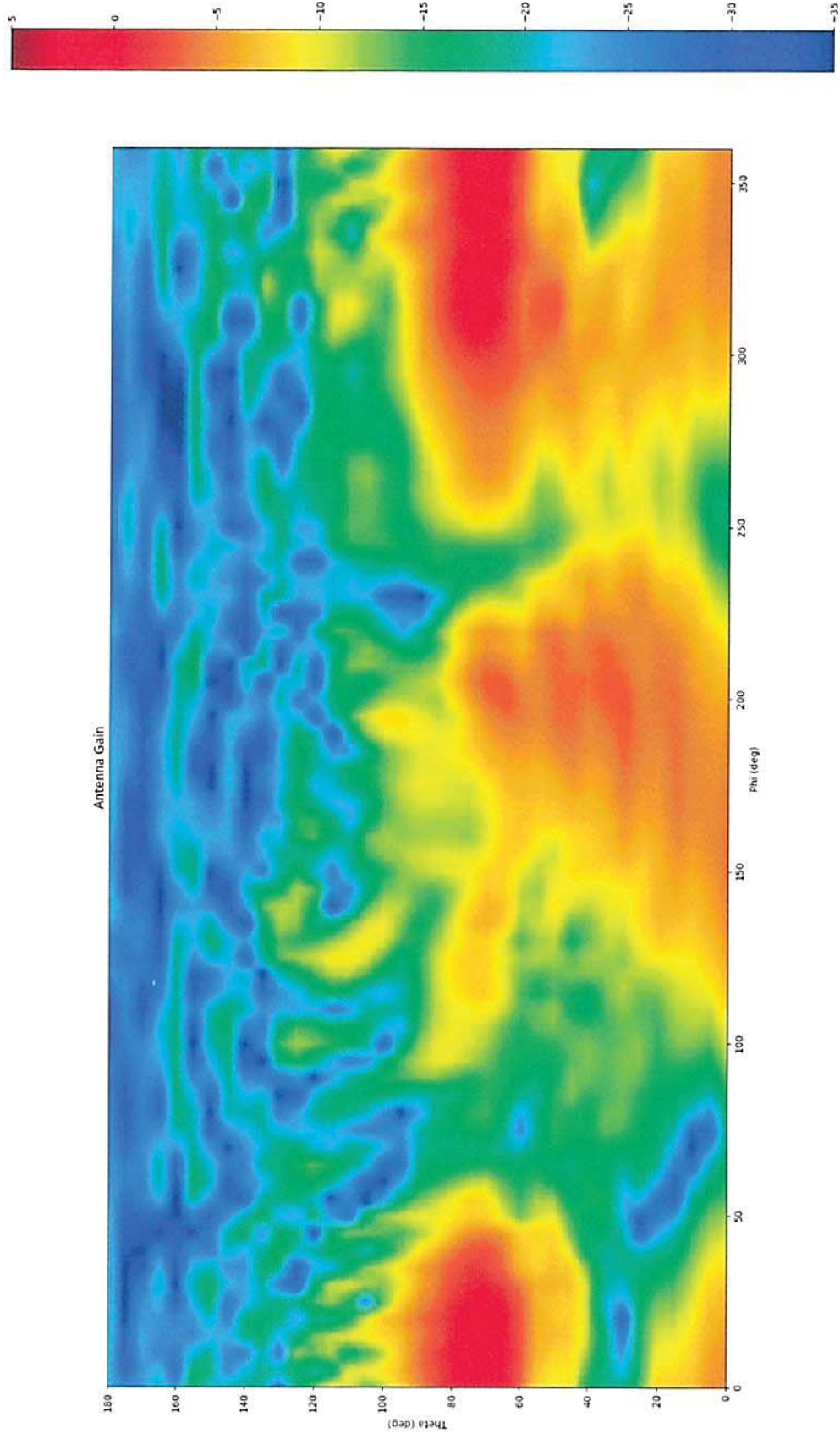


Figure 9-26: E-Theta intensity diagram, port1 @ 5180 MHz

The test results are only related to the items tested. This report shall not be reproduced except in full without the written approval of the testing laboratory.



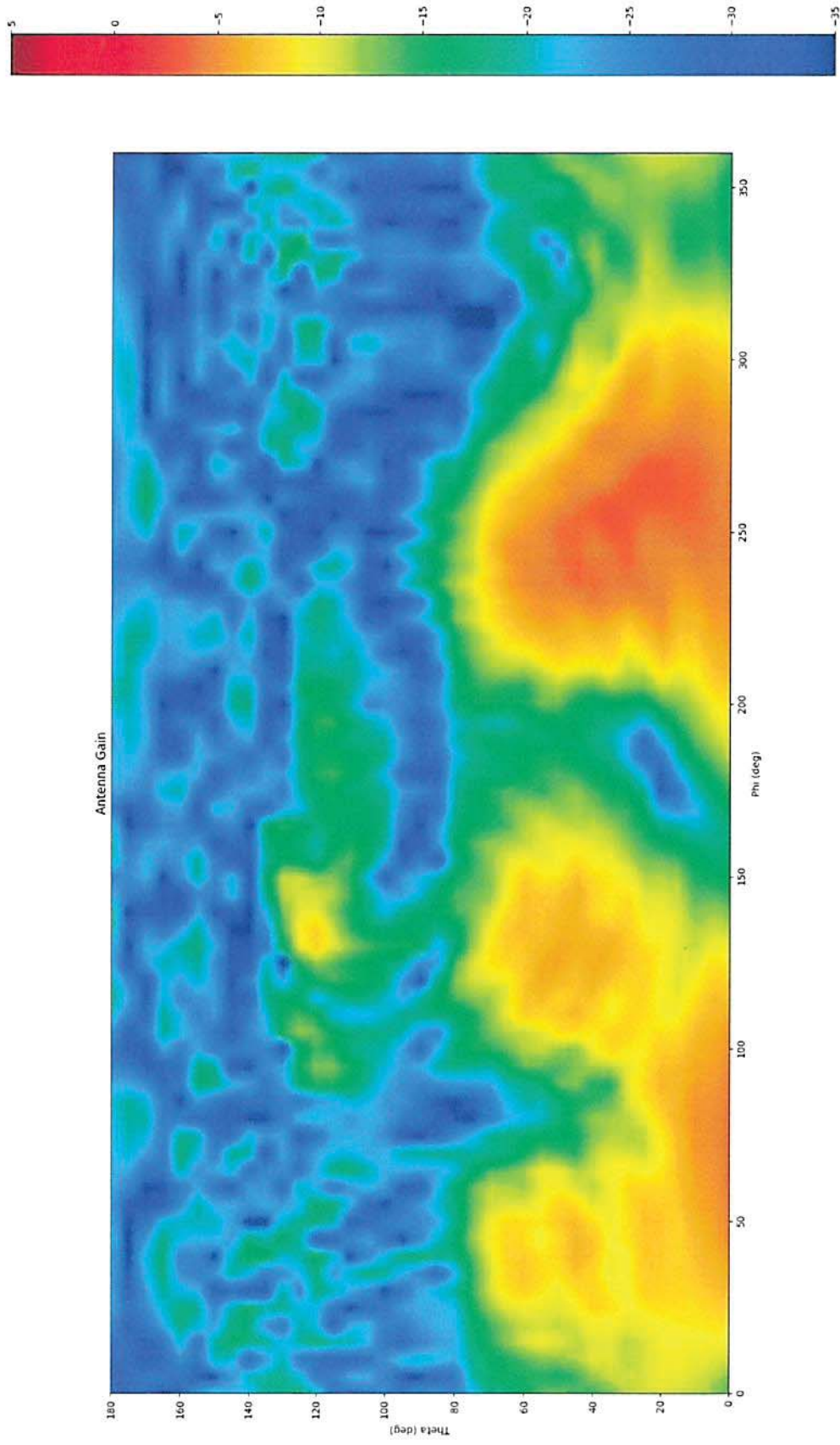


Figure 9-27: E-Phi intensity diagram, port1 @ 5180 MHz

The test results are only related to the items tested. This report shall not be reproduced except in full without the written approval of the testing laboratory.



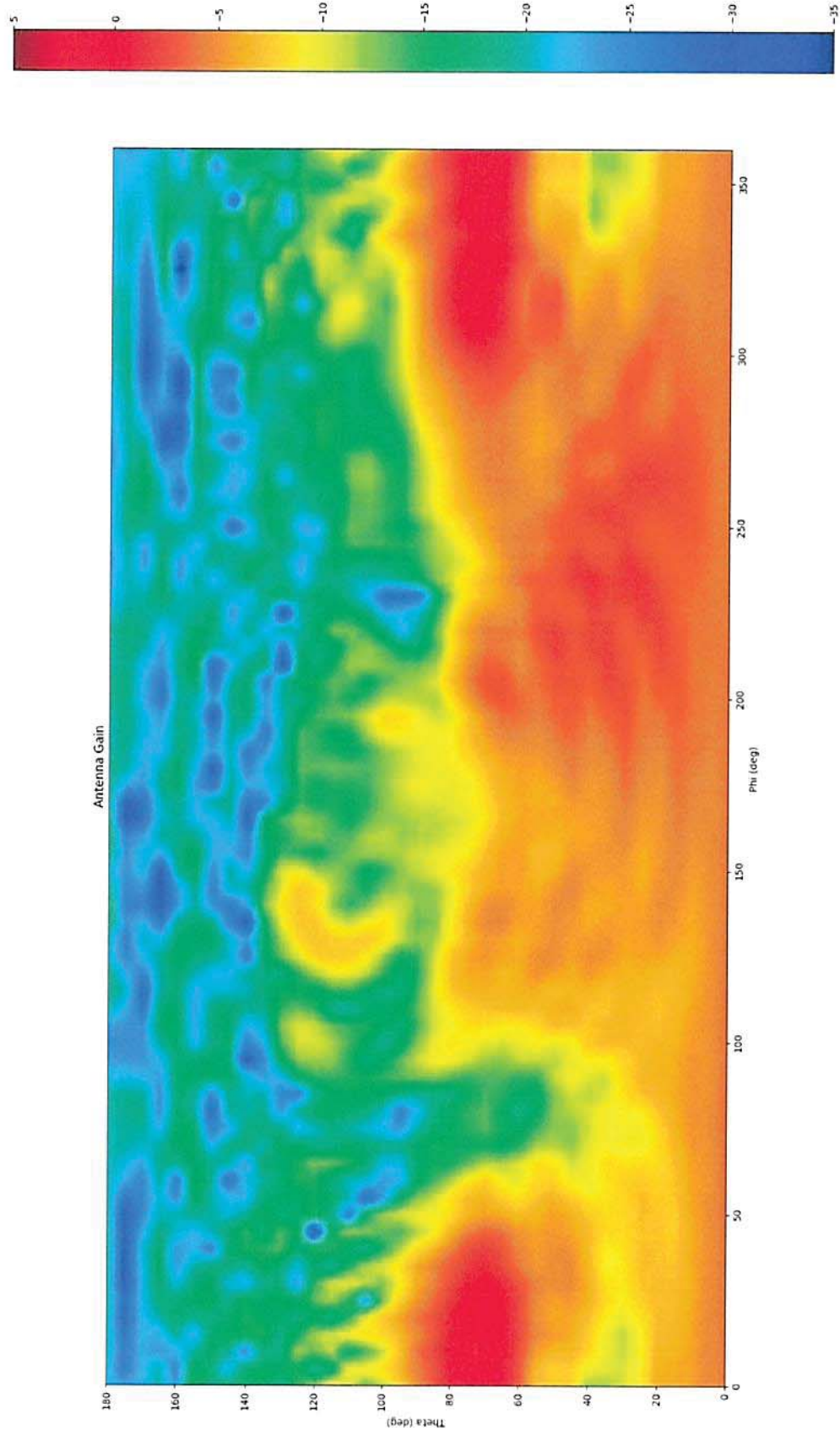


Figure 9-28: Sum intensity diagram, port1 @ 5180 MHz

The test results are only related to the items tested. This report shall not be reproduced except in full without the written approval of the testing laboratory.



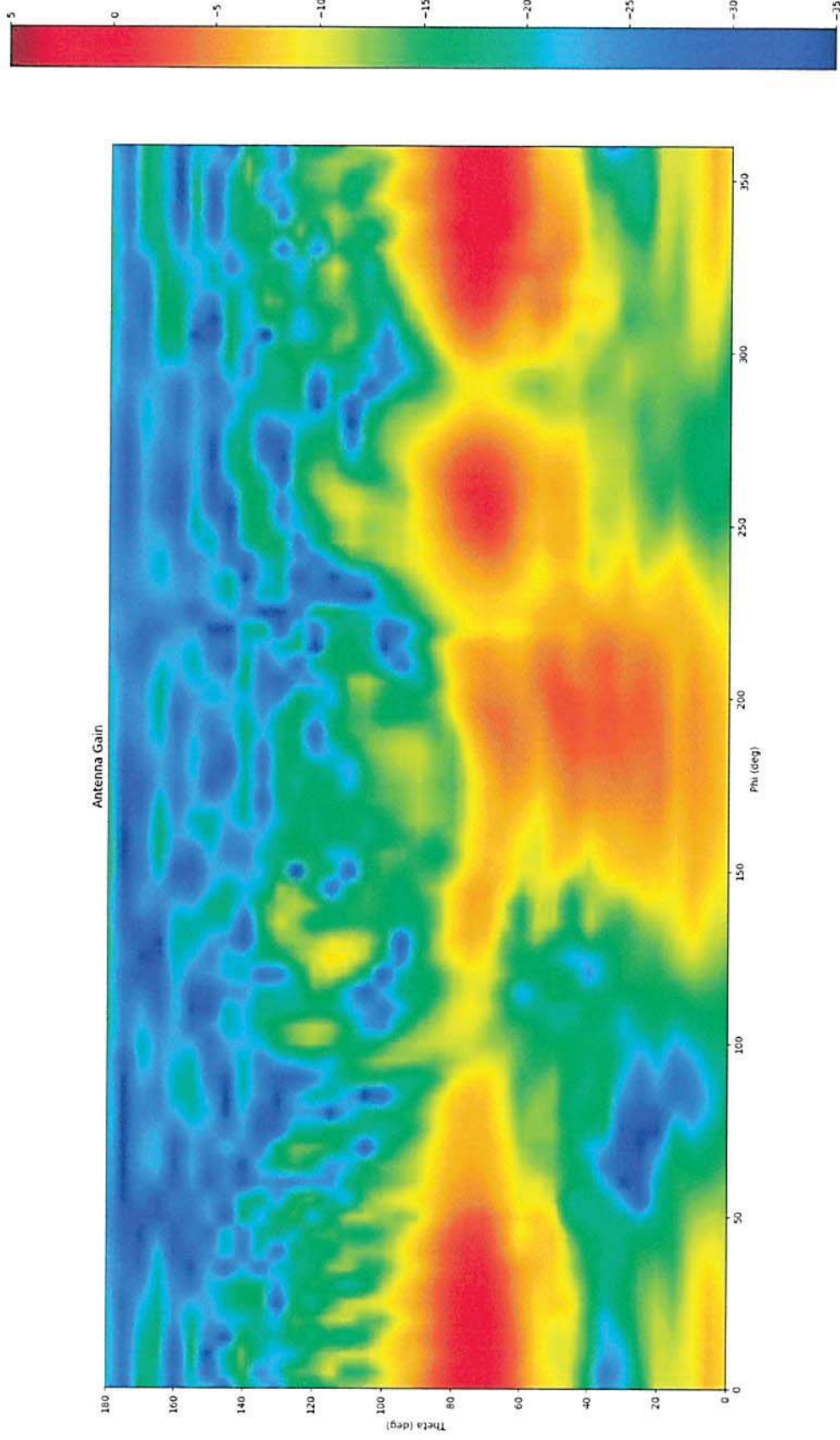


Figure 9-29: E-Theta intensity diagram, port1 @ 5502.5 MHz

The test results are only related to the items tested. This report shall not be reproduced except in full without the written approval of the testing laboratory.



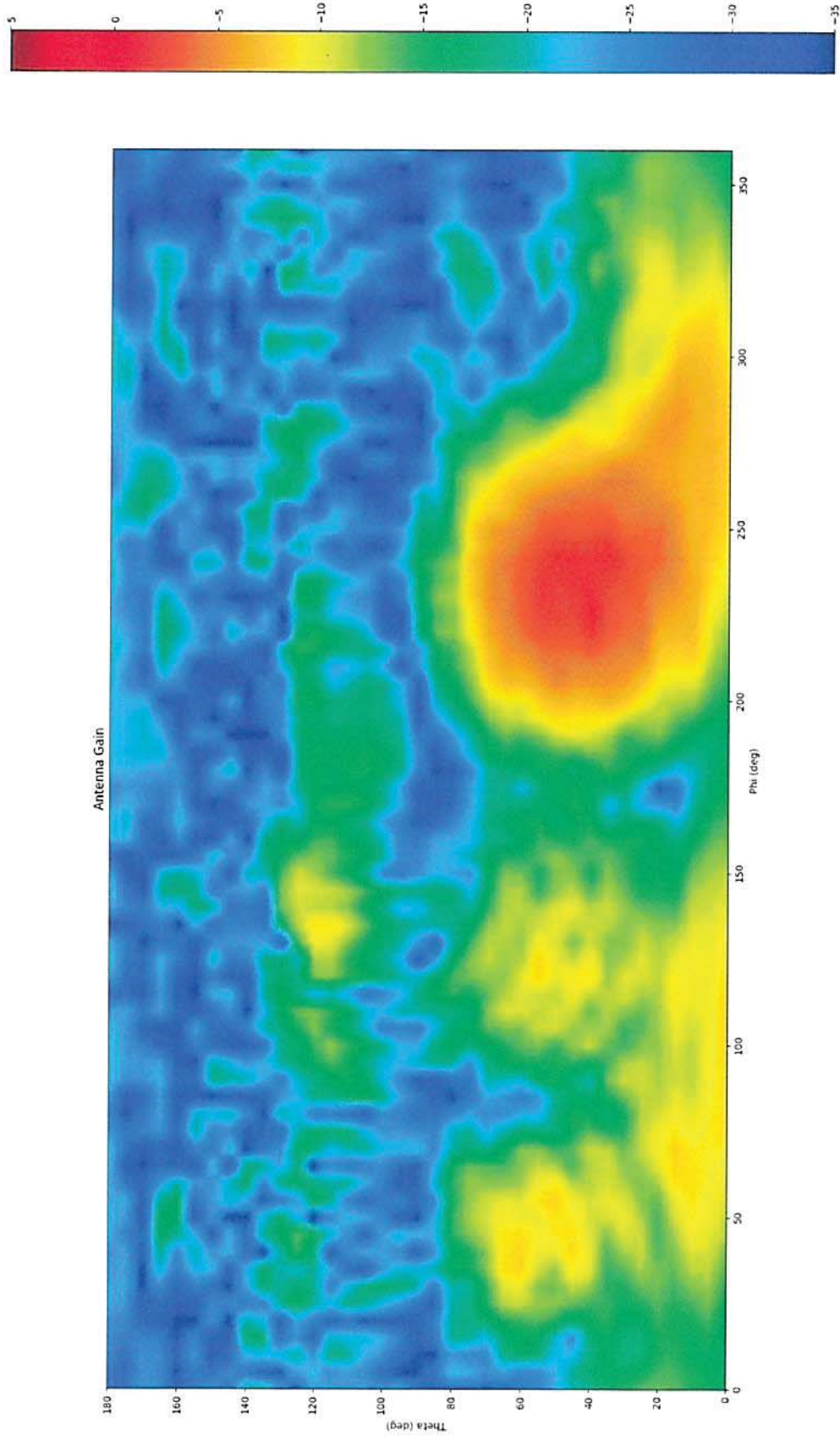


Figure 9-30: E-Phi intensity diagram, part1 @ 5502.5 MHz

The test results are only related to the items tested. This report shall not be reproduced except in full without the written approval of the testing laboratory.



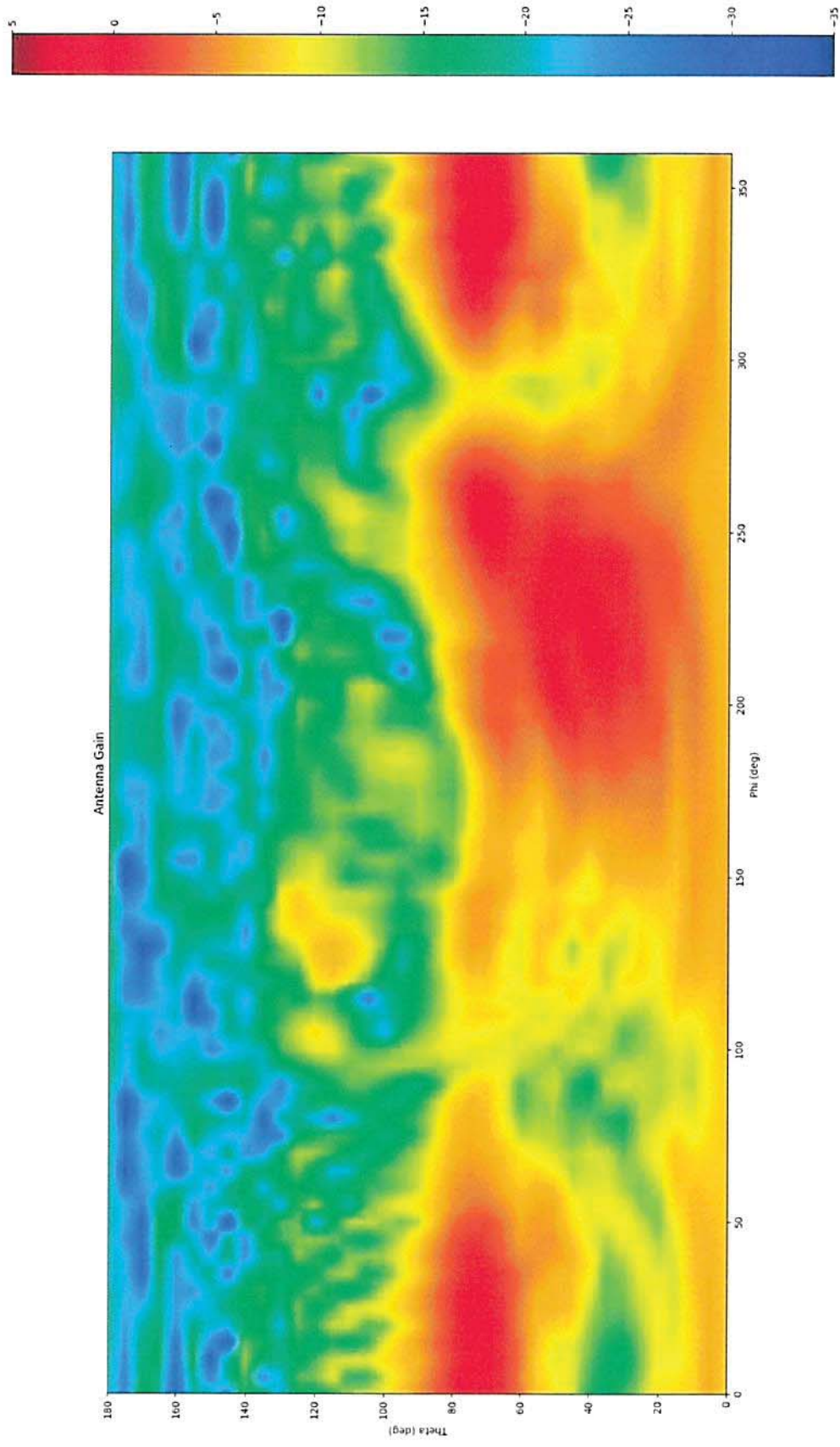


Figure 9-31: Sum intensity diagram, part1 @ 5502.5 MHz

The test results are only related to the items tested. This report shall not be reproduced except in full without the written approval of the testing laboratory.



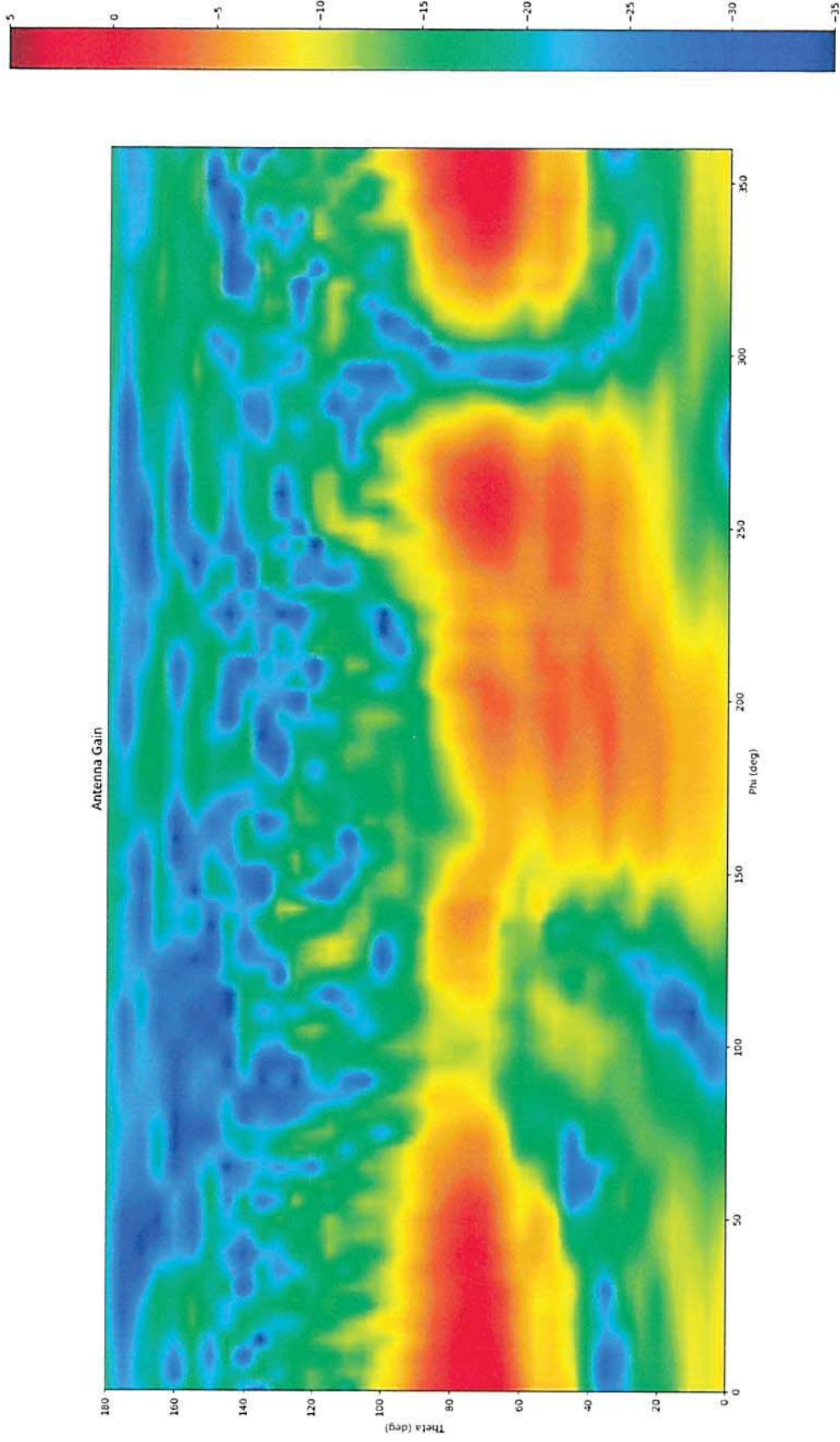


Figure 9-32: E-Theta intensity diagram, part1 @ 5825 MHz

The test results are only related to the items tested. This report shall not be reproduced except in full without the written approval of the testing laboratory.





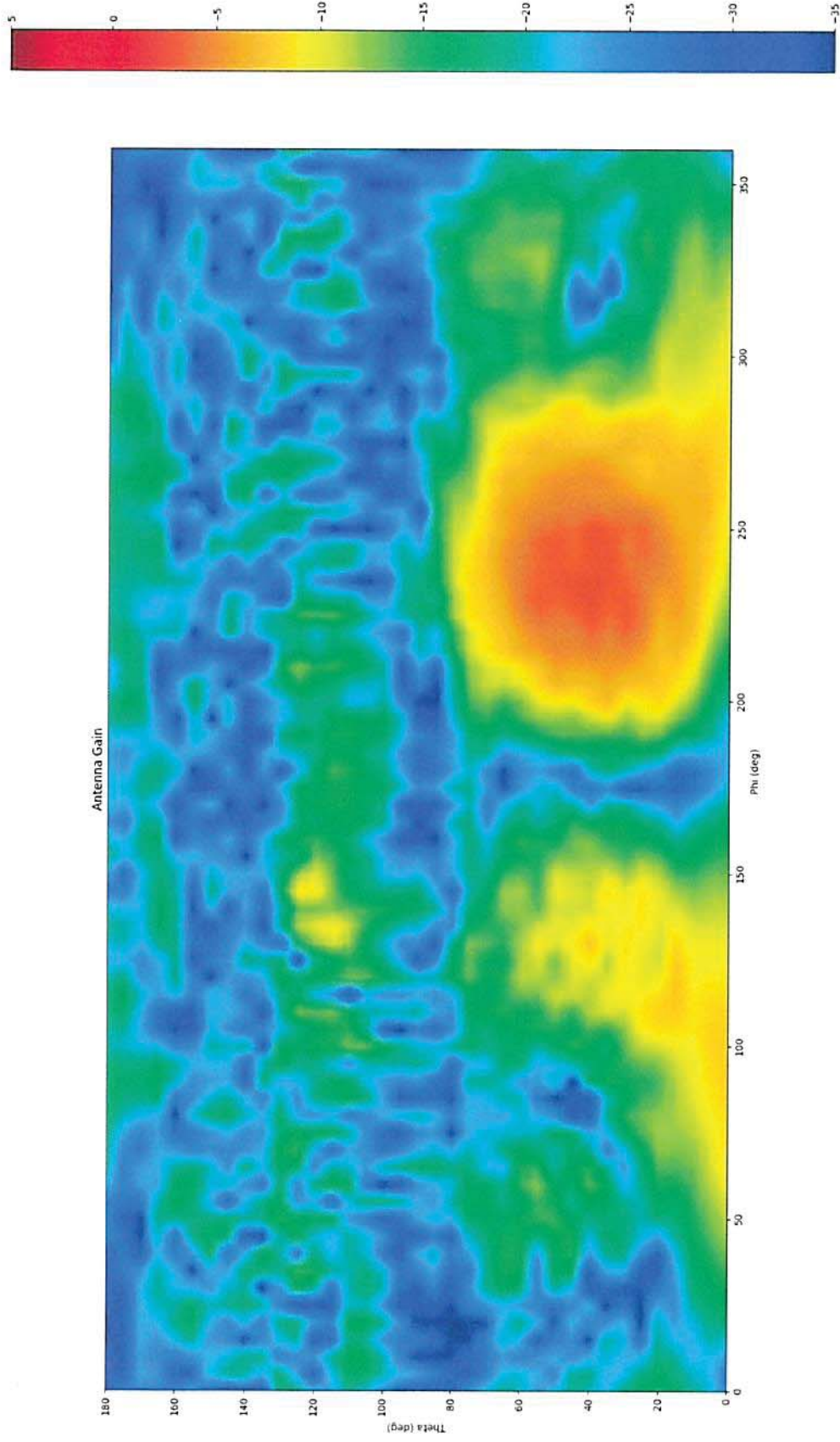


Figure 9-33: E-Phi intensity diagram port1 @ 5825 MHz

The test results are only related to the items tested. This report shall not be reproduced except in full without the written approval of the testing laboratory.



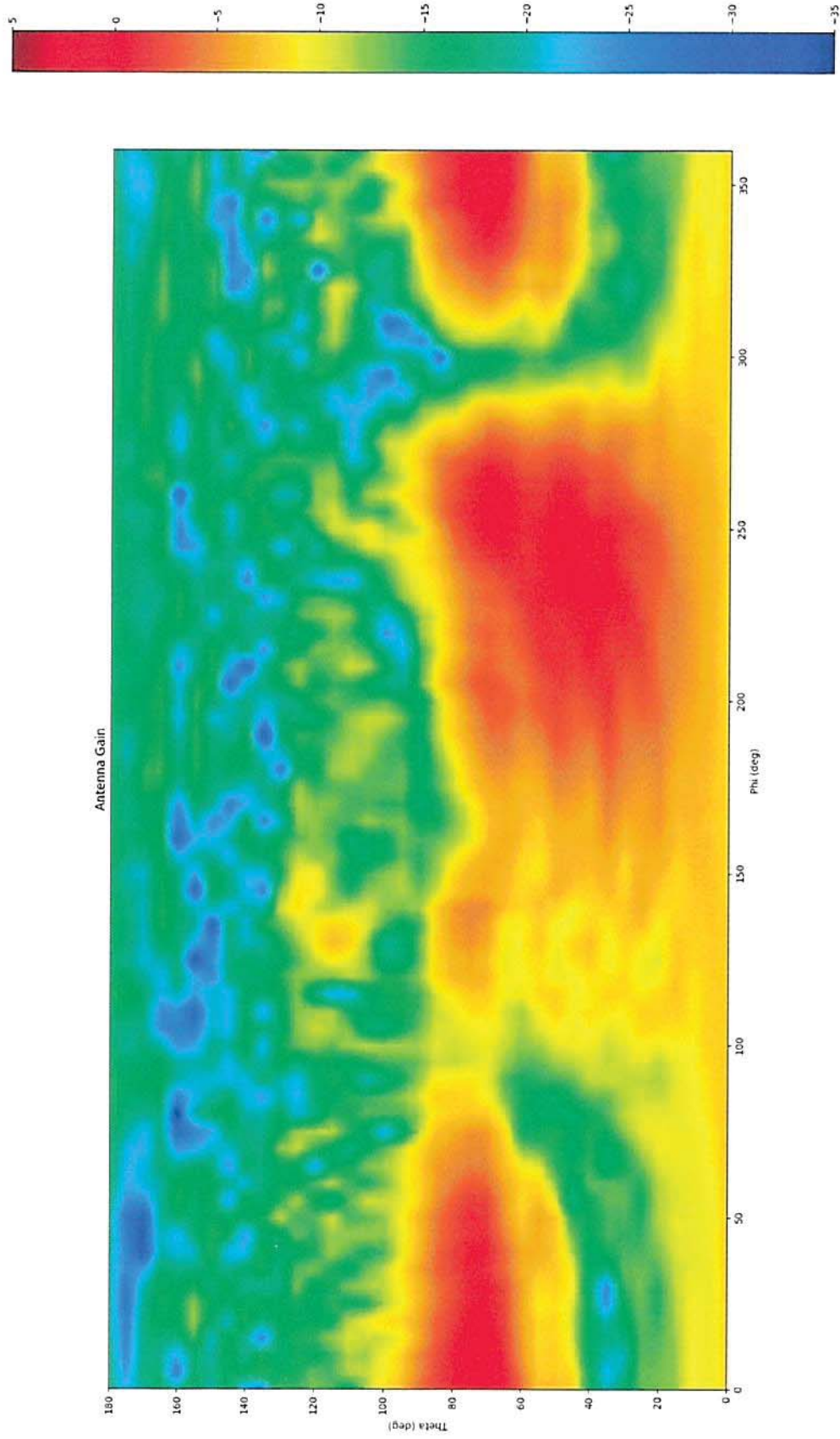


Figure 9-34: Sum intensity diagram, port1 @ 5825 MHz

The test results are only related to the items tested. This report shall not be reproduced except in full without the written approval of the testing laboratory.



### 9.7 Intensity diagrams Taoglas PP407096 antenna port2

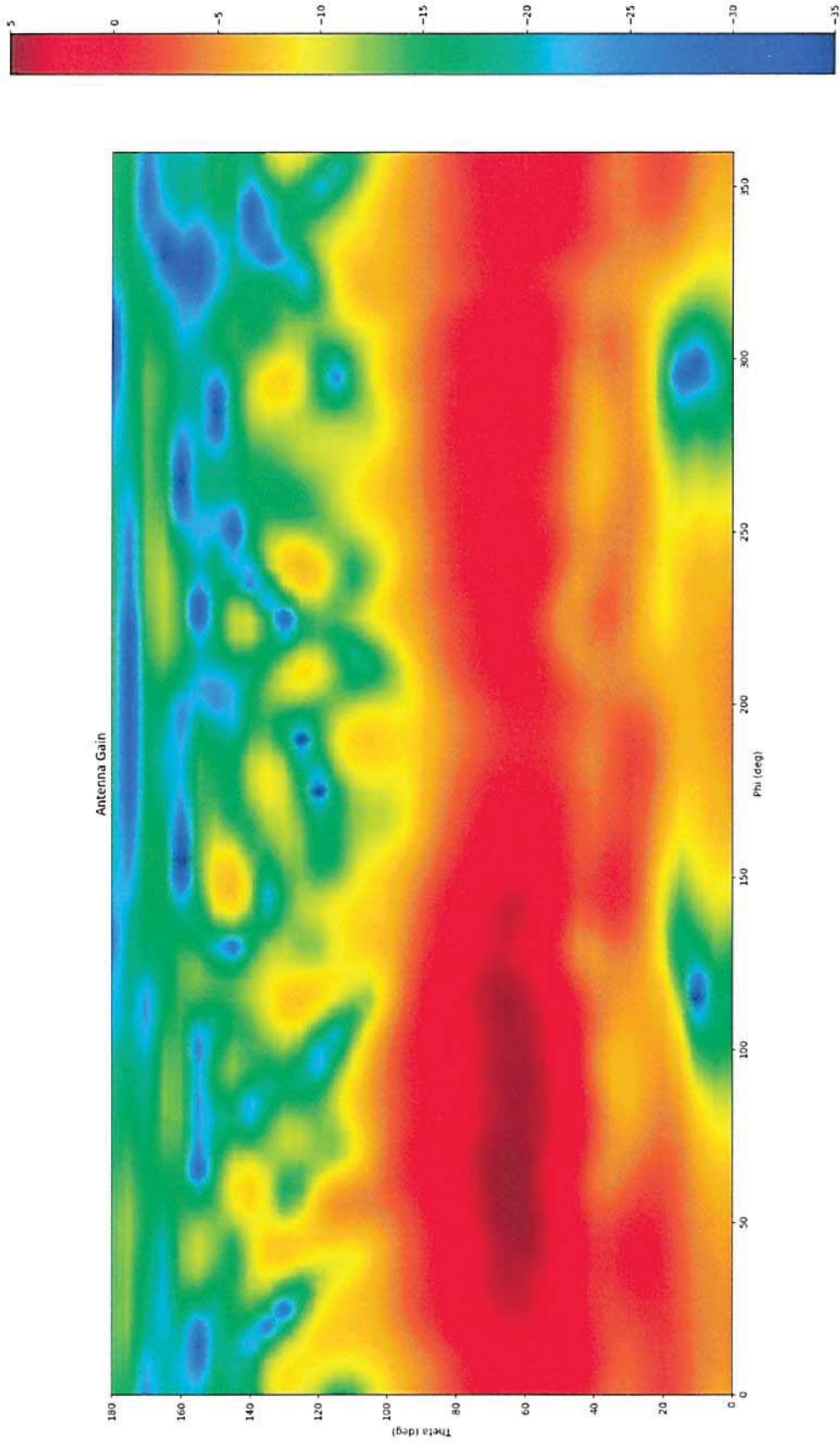


Figure 9-35: E-Theta intensity diagram, port2 @ 2412 MHz

The test results are only related to the items tested. This report shall not be reproduced except in full without the written approval of the testing laboratory.



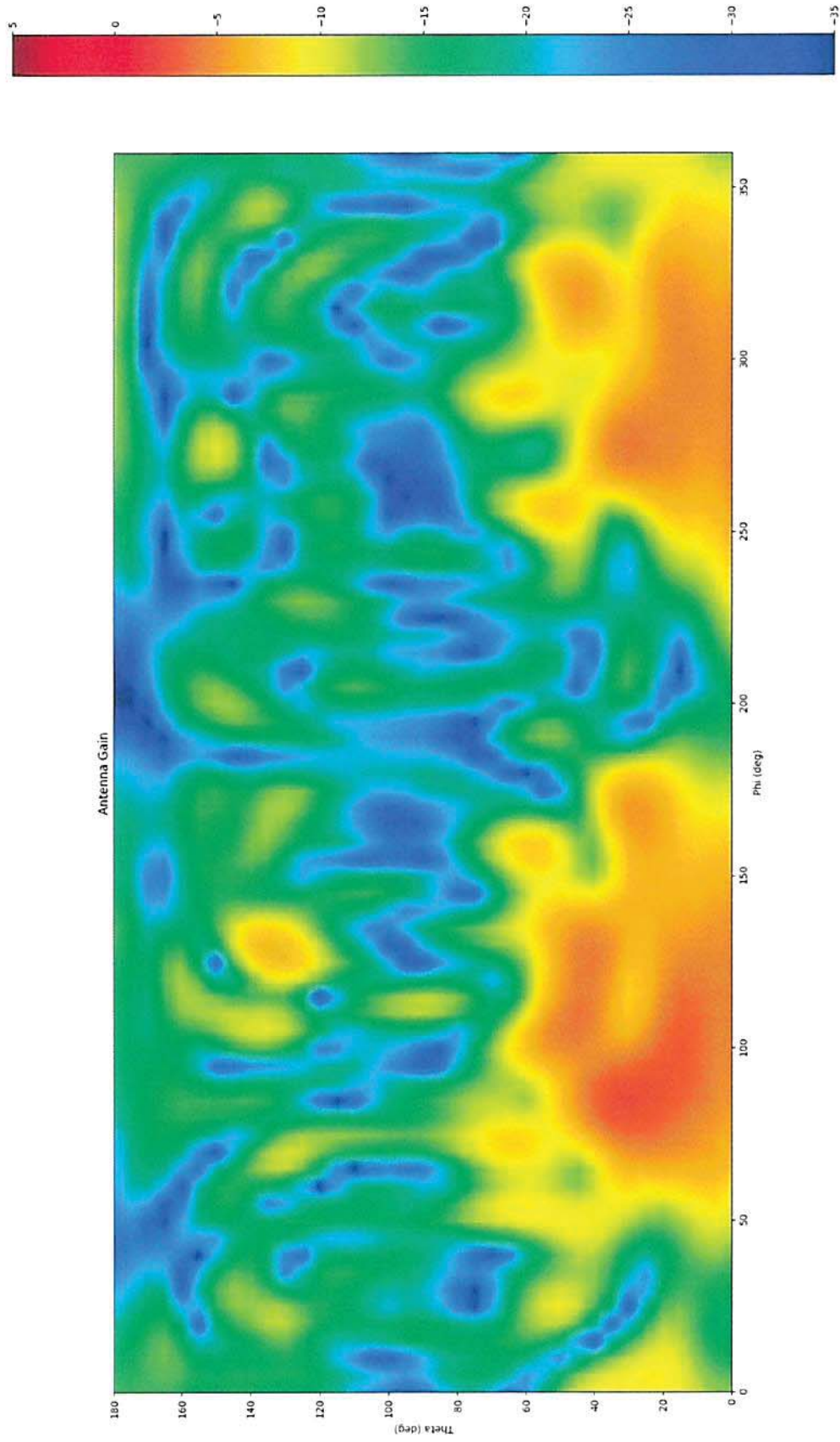


Figure 9-36: E-Phi intensity diagram, port2 @ 2412 MHz

The test results are only related to the items tested. This report shall not be reproduced except in full without the written approval of the testing laboratory.



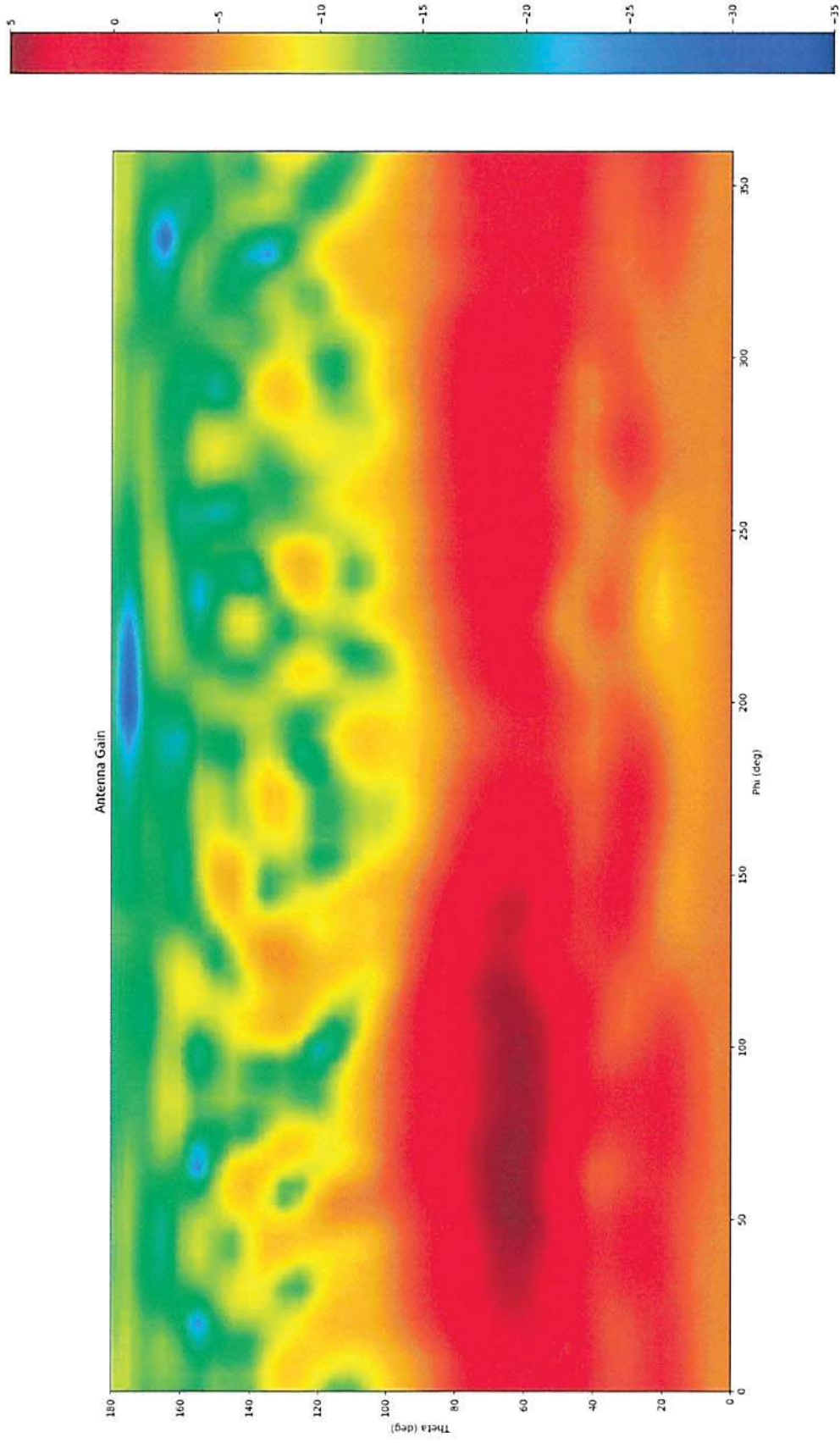


Figure 9-37: Sum intensity diagram, port2 @ 2412 MHz

The test results are only related to the items tested. This report shall not be reproduced except in full without the written approval of the testing laboratory.



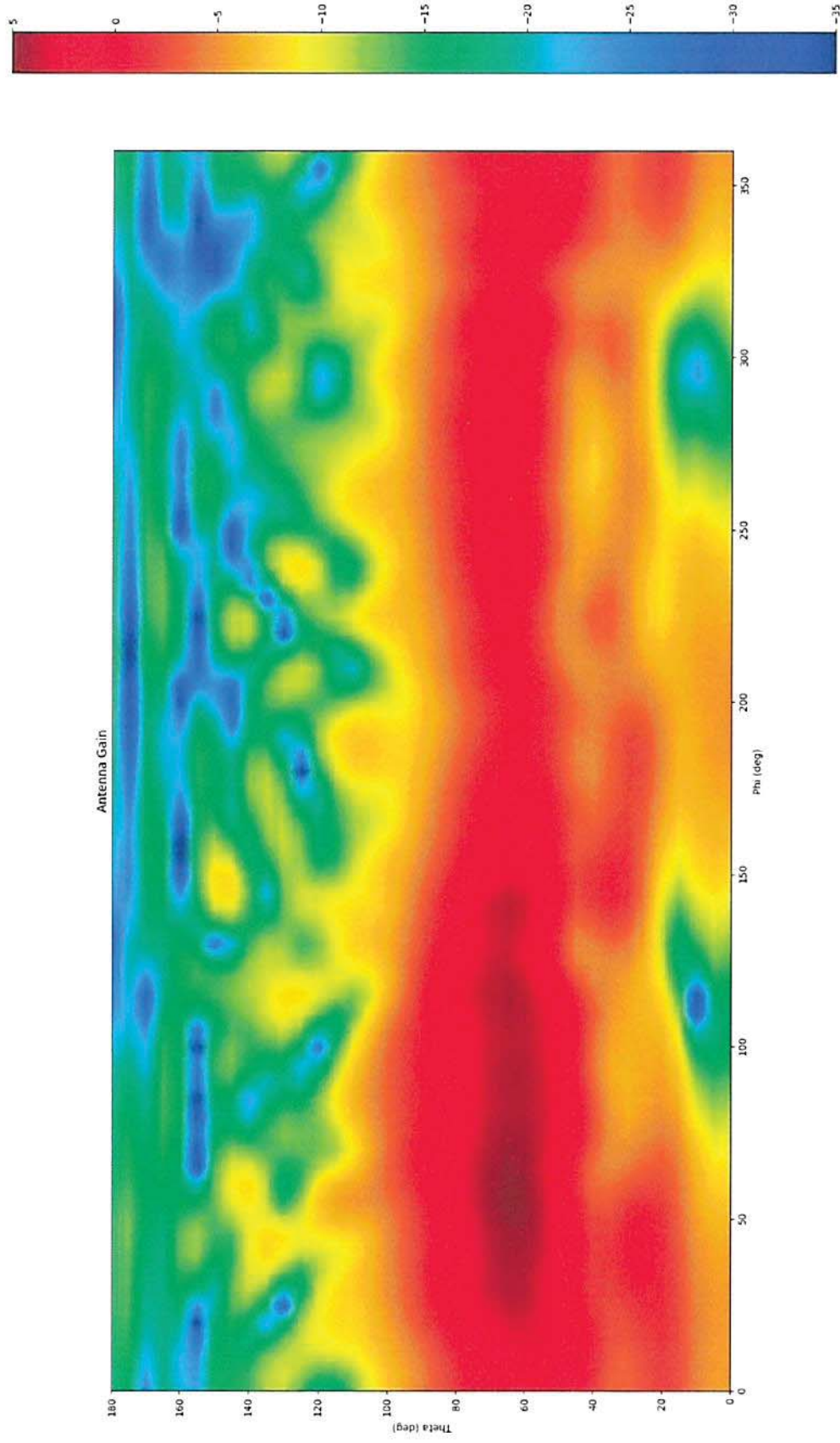


Figure 9-38: E-Theta intensity diagram, port2 @ 2448 MHz

The test results are only related to the items tested. This report shall not be reproduced except in full without the written approval of the testing laboratory.



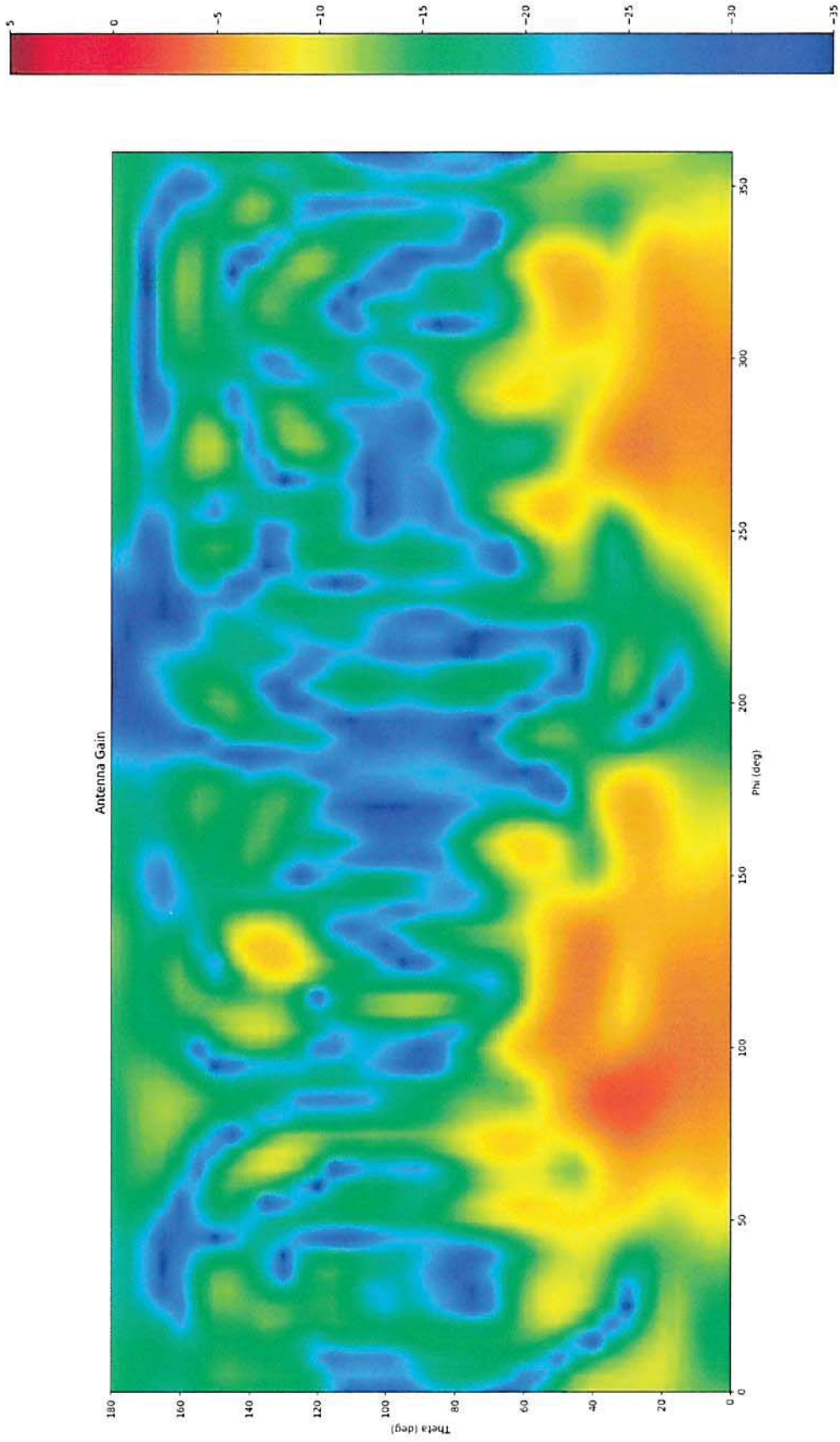


Figure 9-39: E-Phi intensity diagram, port2 @ 2448 MHz

The test results are only related to the items tested. This report shall not be reproduced except in full without the written approval of the testing laboratory.



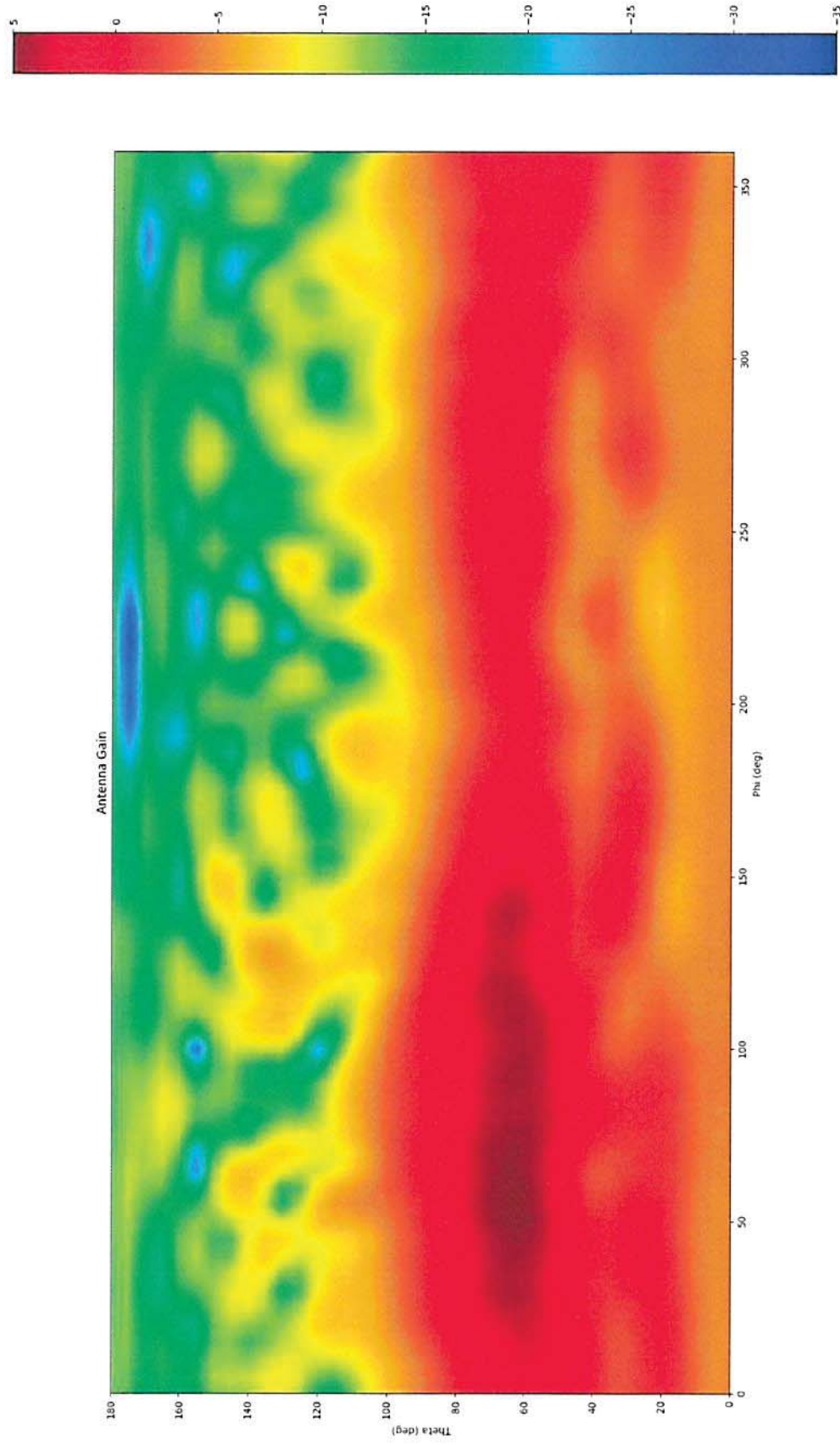


Figure 9-40: Sum intensity diagram, port2 @ 2448 MHz

The test results are only related to the items tested. This report shall not be reproduced except in full without the written approval of the testing laboratory.





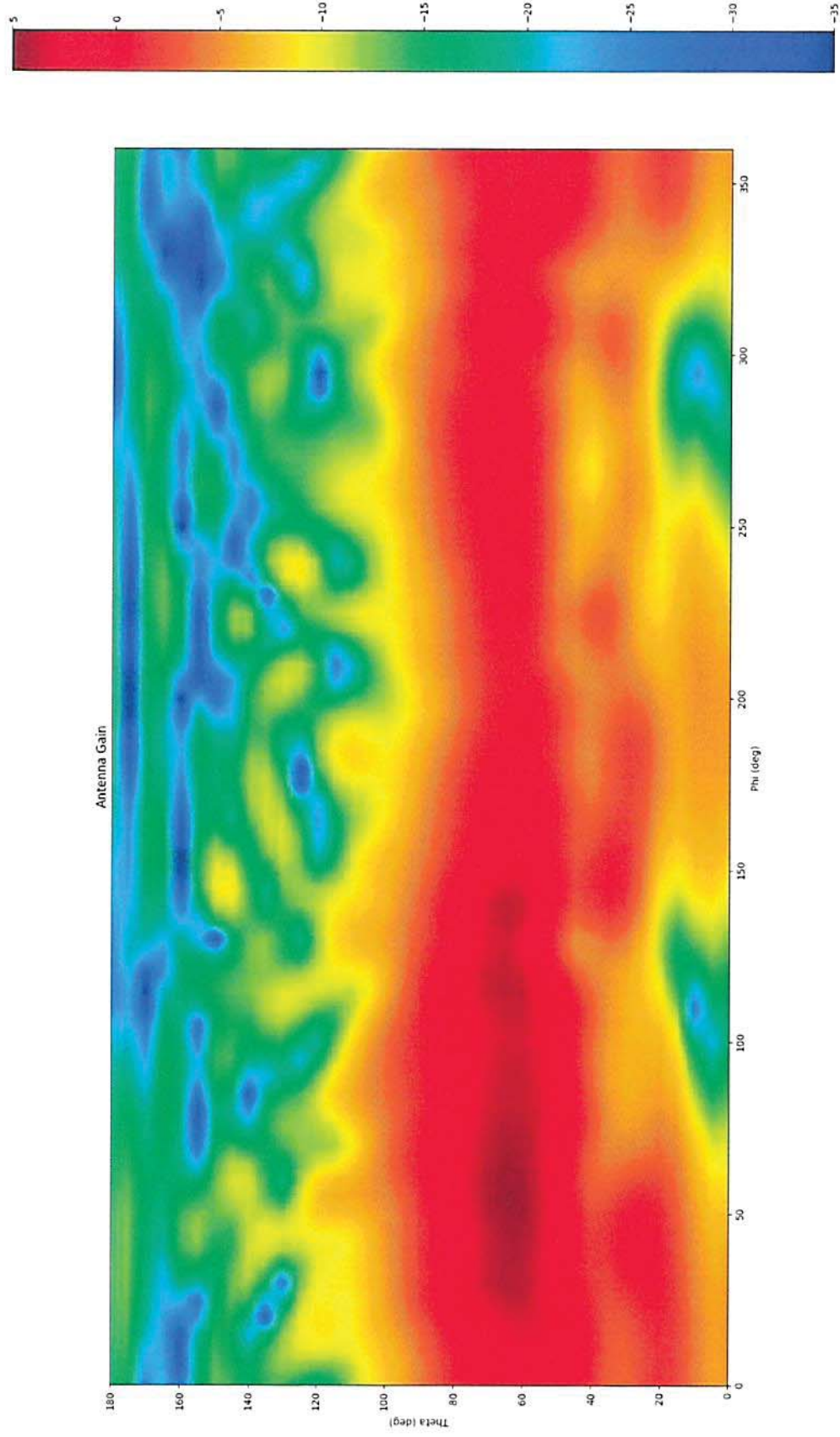


Figure 9-41: E-Theta intensity diagram, port2 @ 2484 MHz

The test results are only related to the items tested. This report shall not be reproduced except in full without the written approval of the testing laboratory.



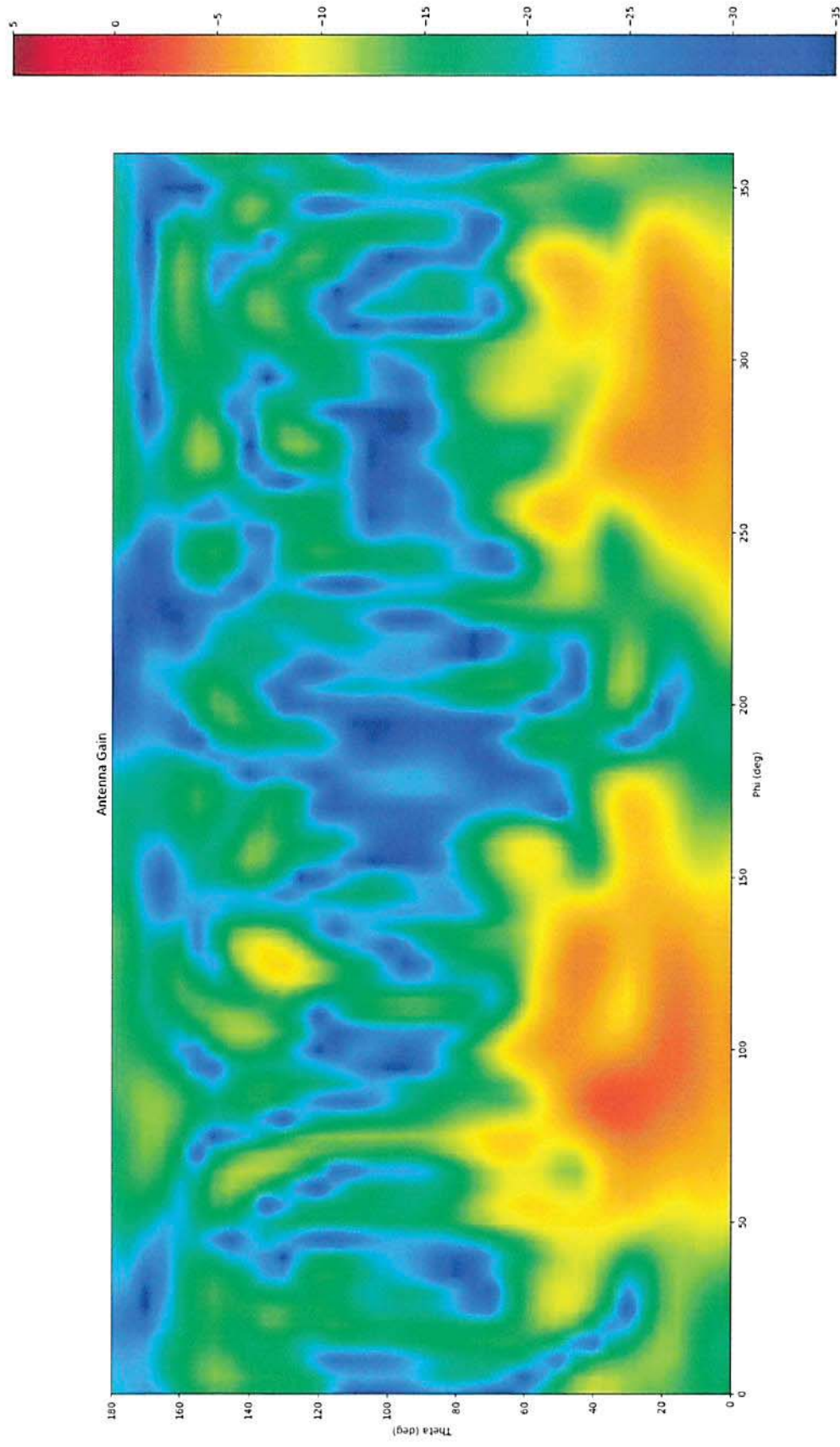


Figure 9-42: E-Phi intensity diagram, port2 @ 2484 MHz

The test results are only related to the items tested. This report shall not be reproduced except in full without the written approval of the testing laboratory.



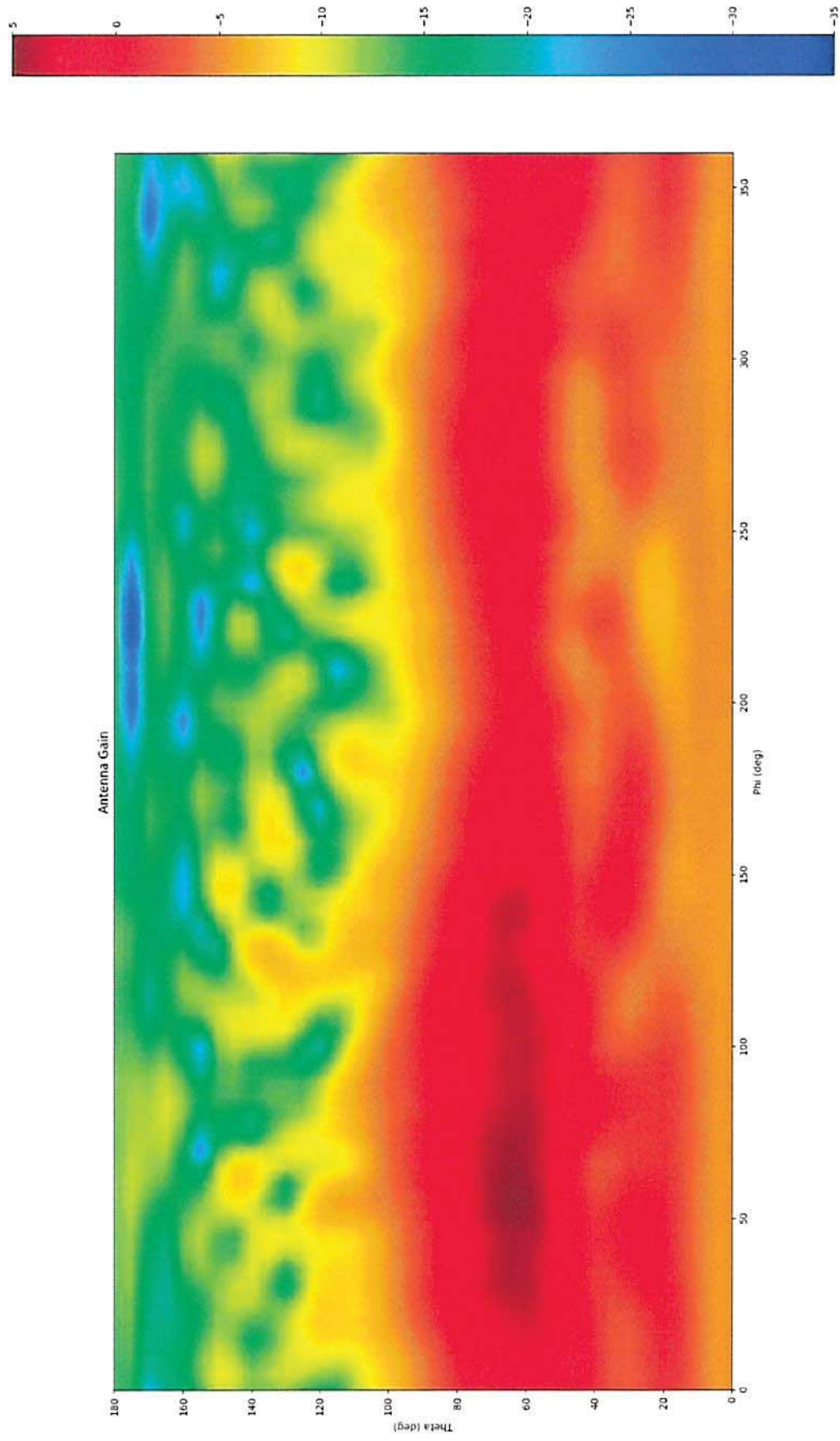


Figure 9-43: Sum intensity diagram, port2 @ 2484 MHz

The test results are only related to the items tested. This report shall not be reproduced except in full without the written approval of the testing laboratory.



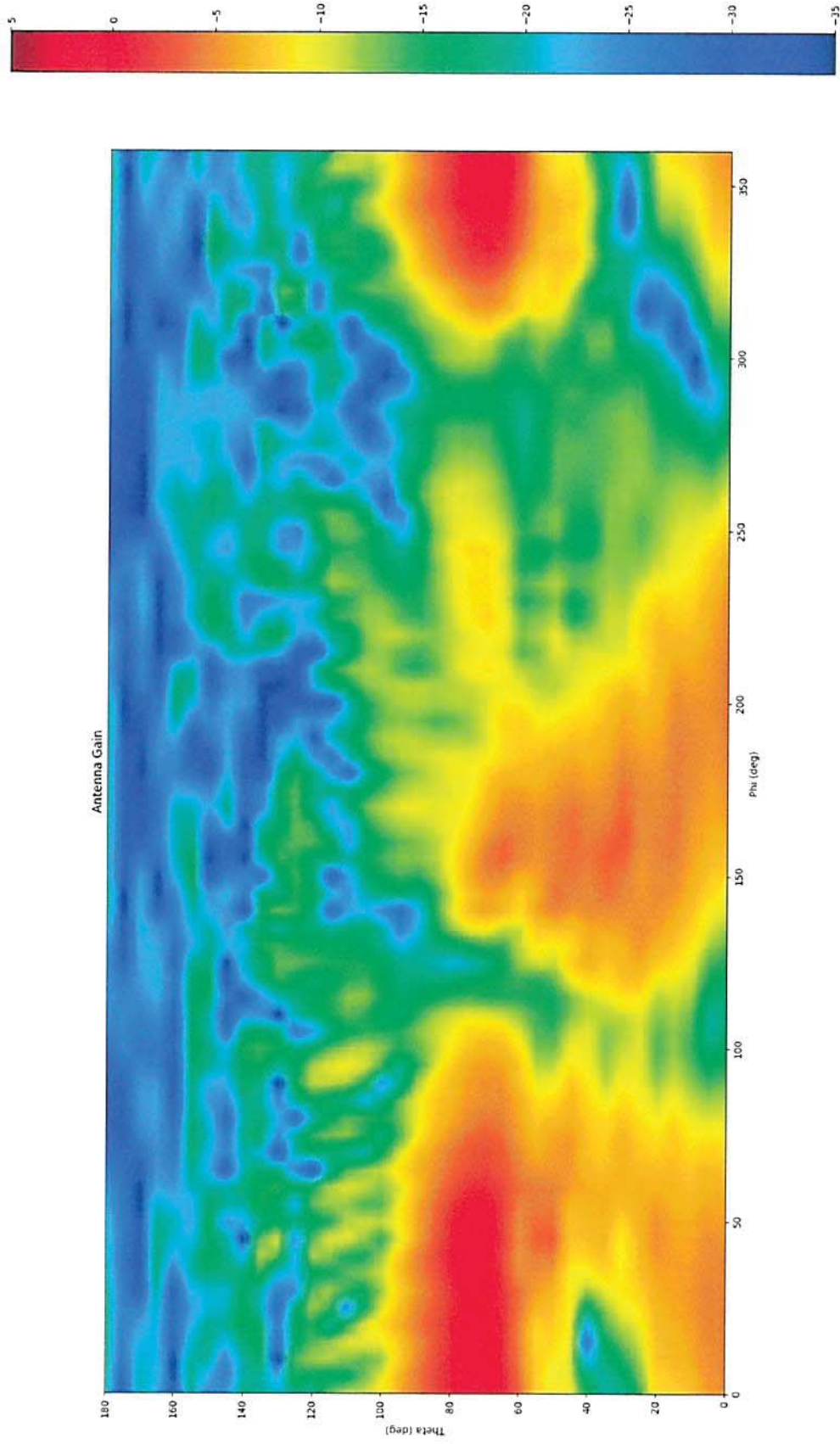


Figure 9-44: E-Theta intensity diagram, port2 @ 5180 MHz

The test results are only related to the items tested. This report shall not be reproduced except in full without the written approval of the testing laboratory.



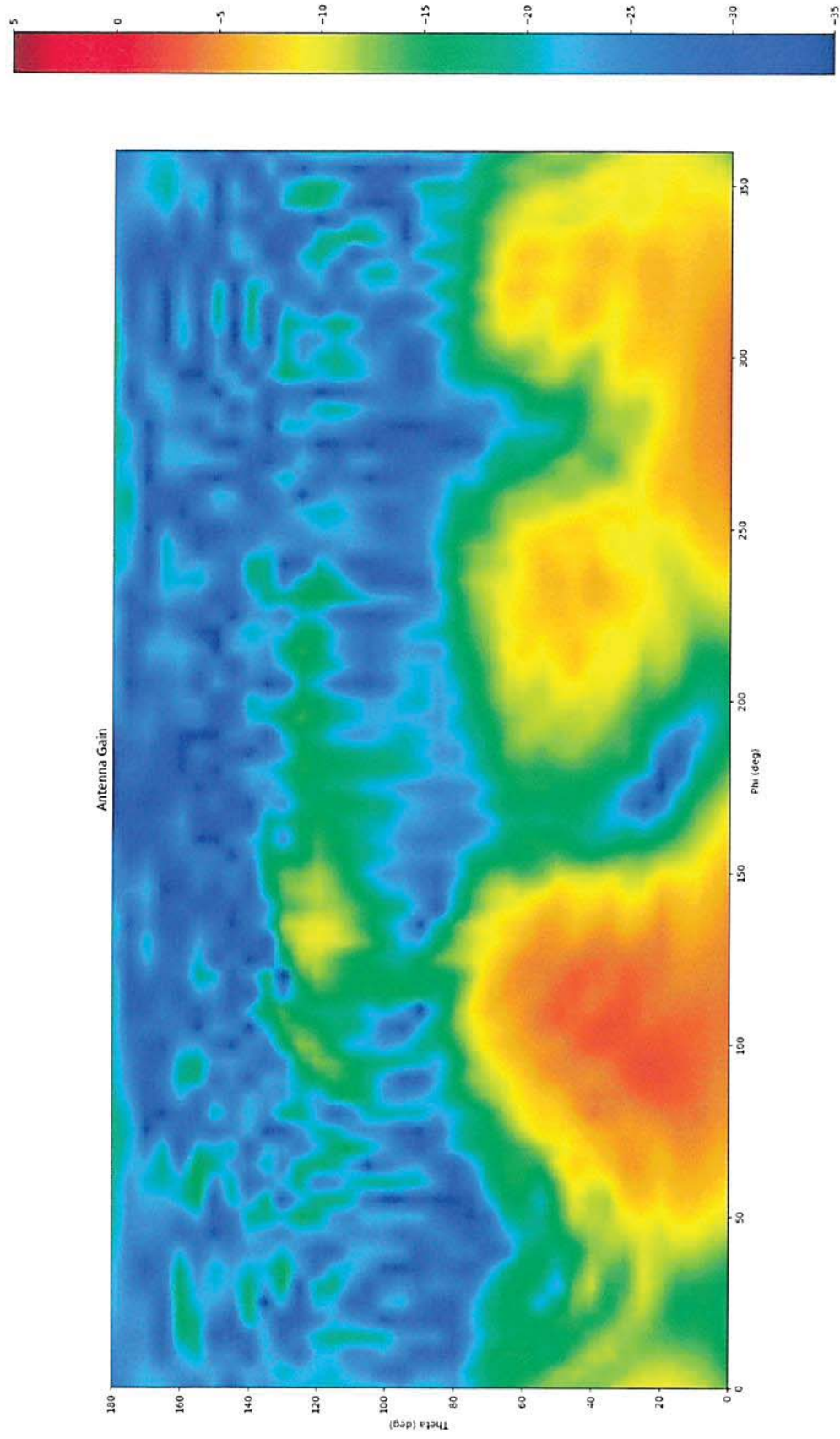


Figure 9-45: E-Phi intensity diagram, port2 @ 5180 MHz

The test results are only related to the items tested. This report shall not be reproduced except in full without the written approval of the testing laboratory.



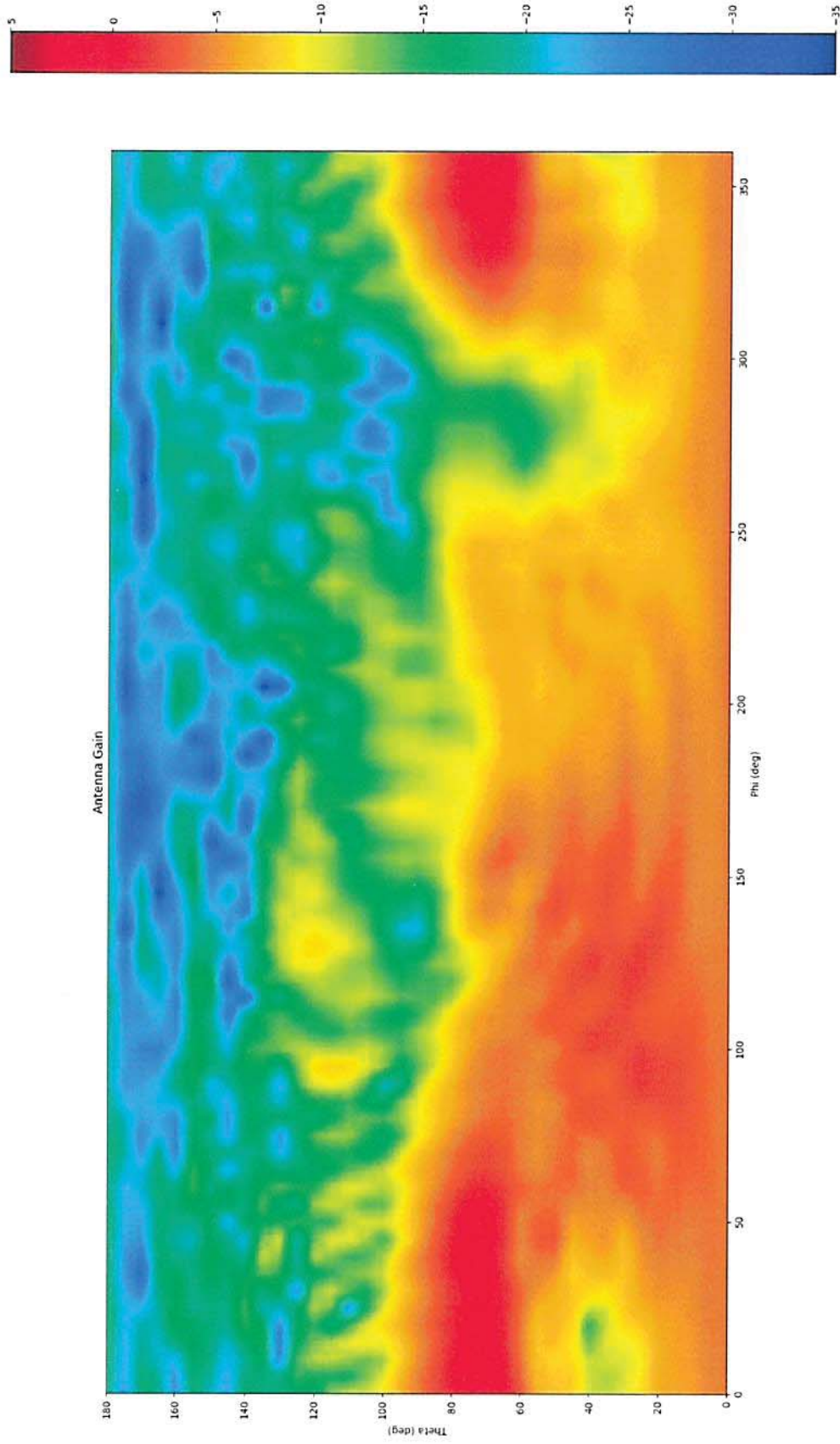


Figure 9-46: Sum intensity diagram, port2 @ 5180 MHz

The test results are only related to the items tested. This report shall not be reproduced except in full without the written approval of the testing laboratory.



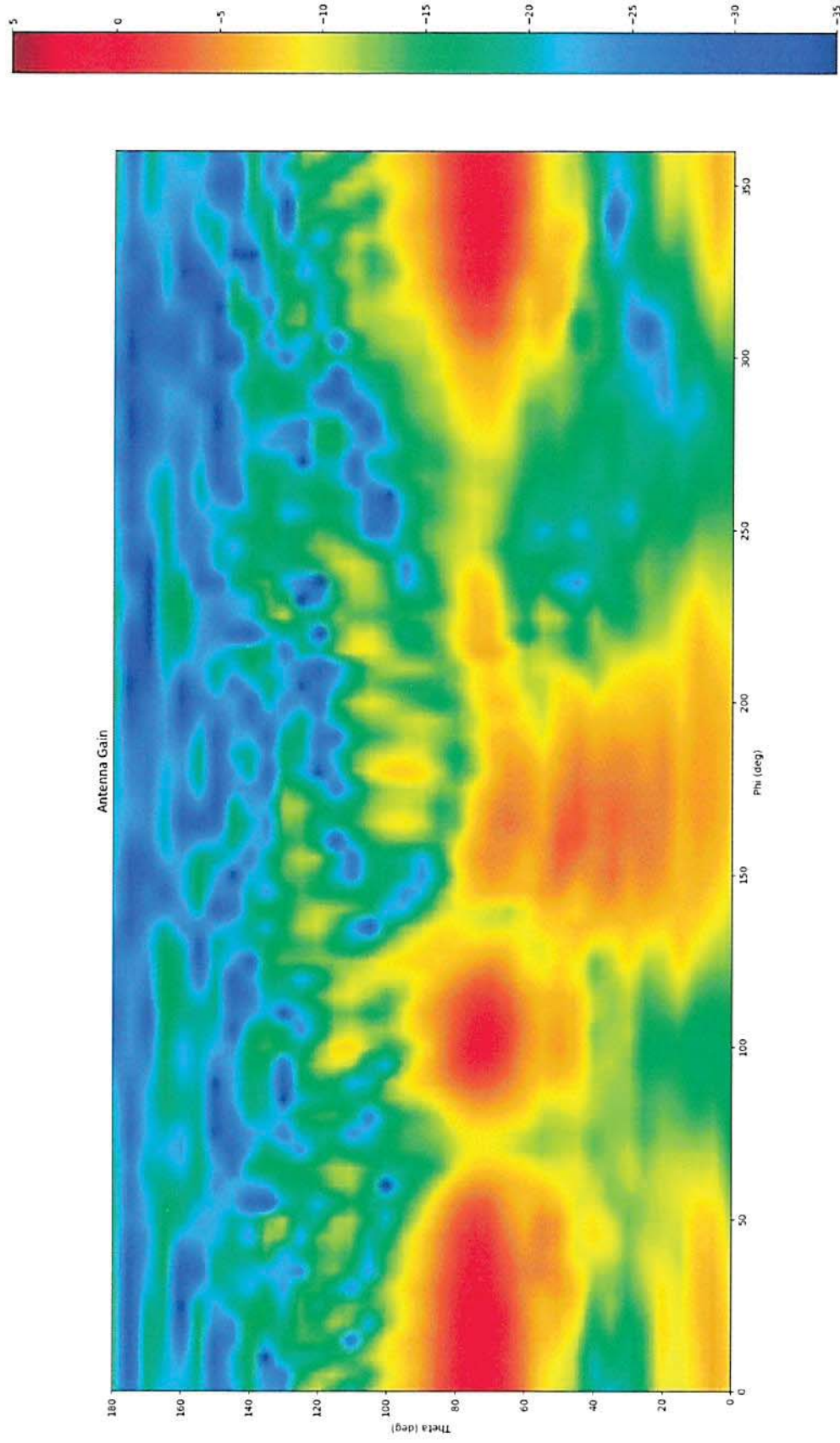


Figure 9-47: E-Theta intensity diagram, port2 @ 5502.5 MHz

The test results are only related to the items tested. This report shall not be reproduced except in full without the written approval of the testing laboratory.



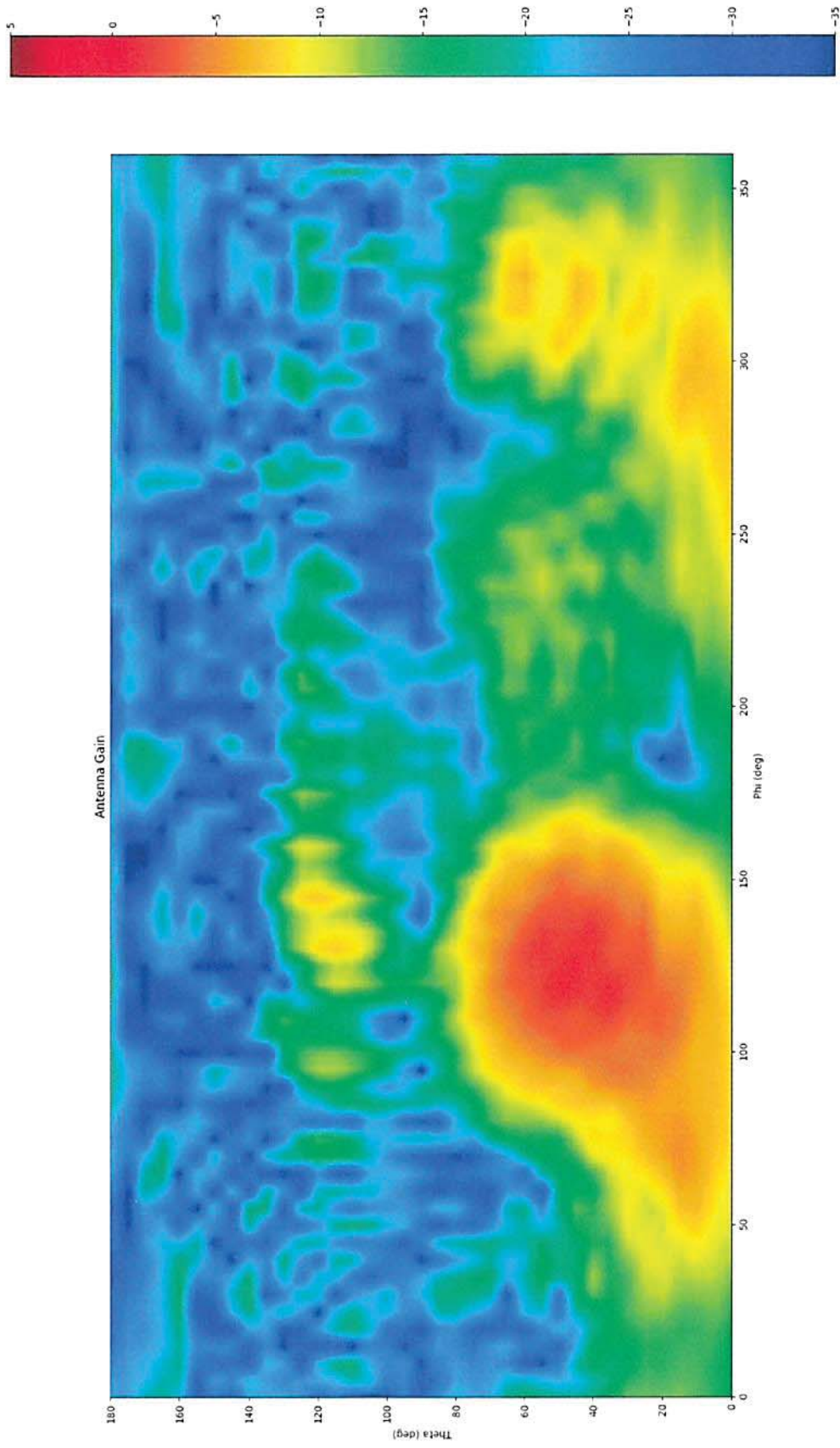


Figure 9-48: E-Phi intensity diagram, port2 @ 5502.5 MHz

The test results are only related to the items tested. This report shall not be reproduced except in full without the written approval of the testing laboratory.





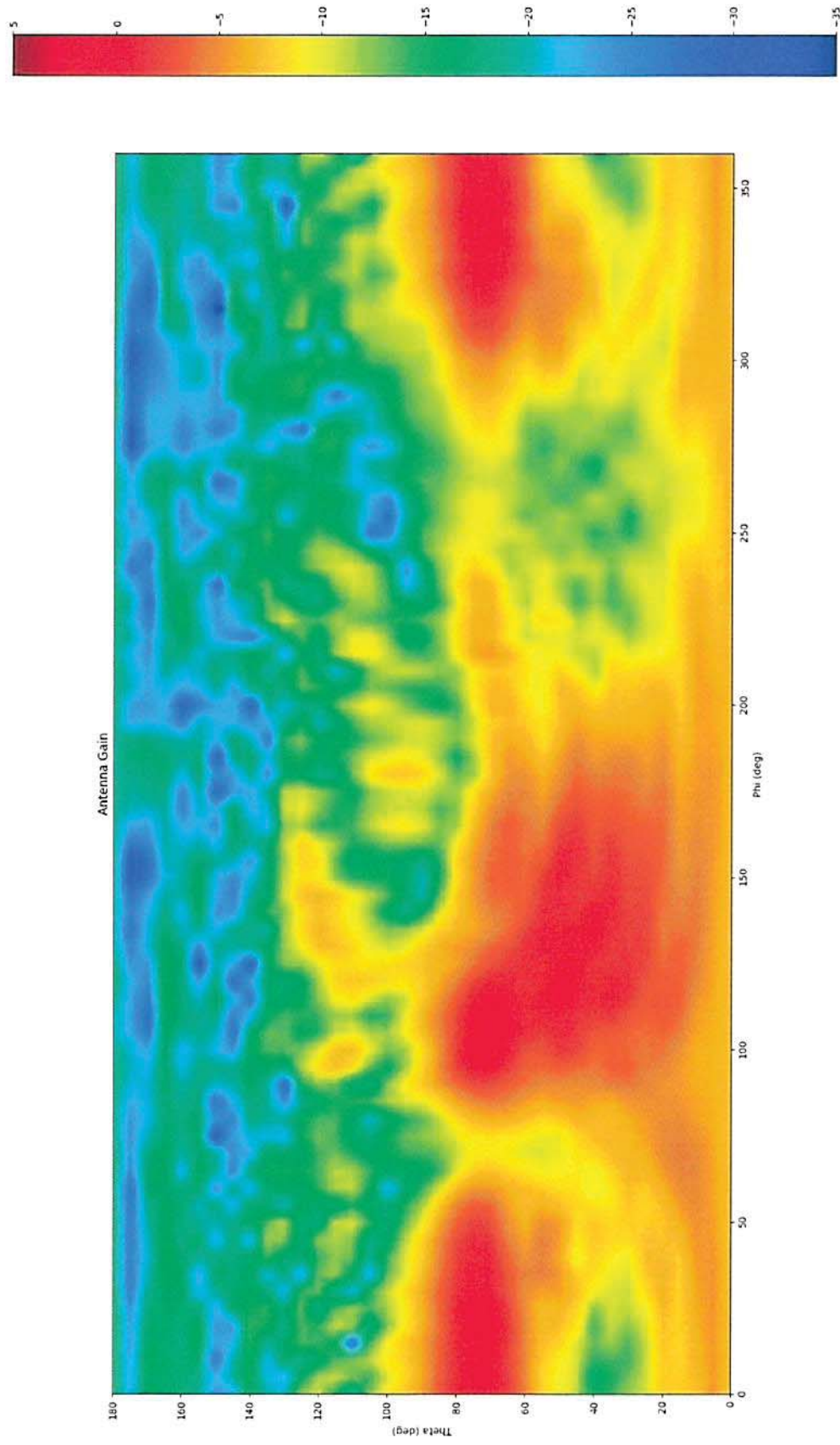


Figure 9-49: Sum intensity diagram, port2 @ 5502.5 MHz

The test results are only related to the items tested. This report shall not be reproduced except in full without the written approval of the testing laboratory.



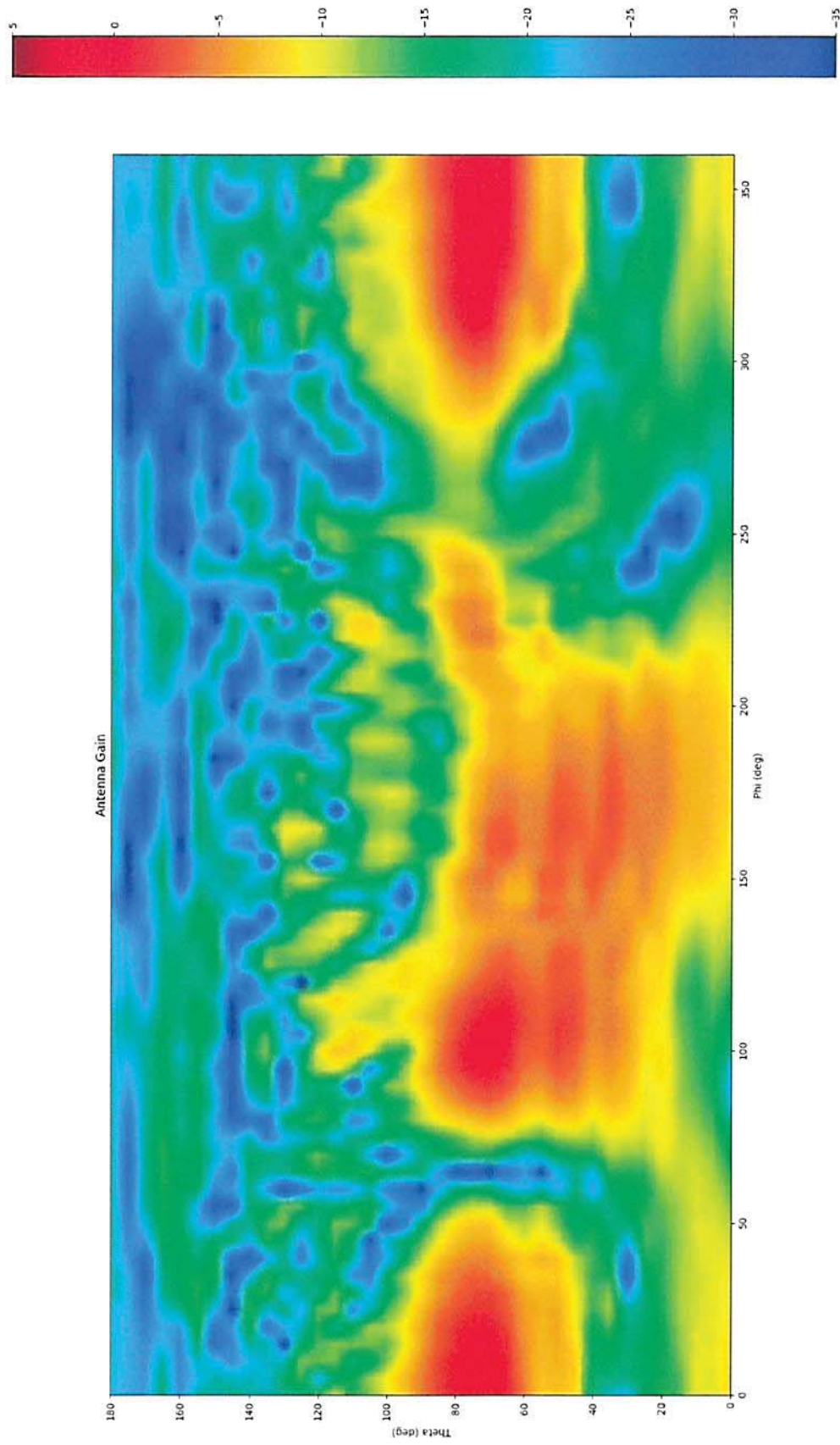


Figure 9-50: E-Theta intensity diagram, port2 @ 5825 MHz

The test results are only related to the items tested. This report shall not be reproduced except in full without the written approval of the testing laboratory.



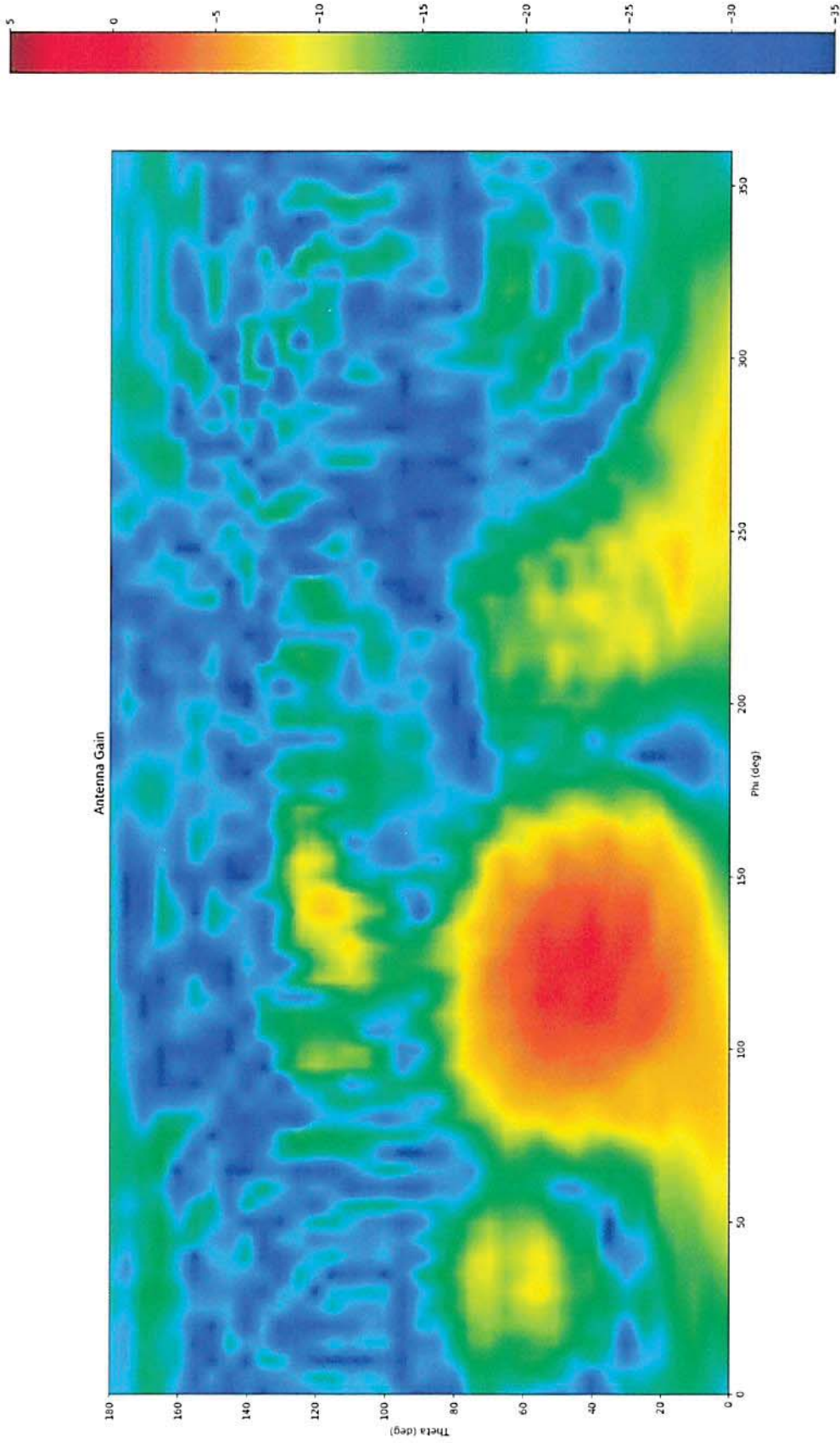


Figure 9-51 : E-Phi intensity diagram port2 @ 5825 MHz

The test results are only related to the items tested. This report shall not be reproduced except in full without the written approval of the testing laboratory.



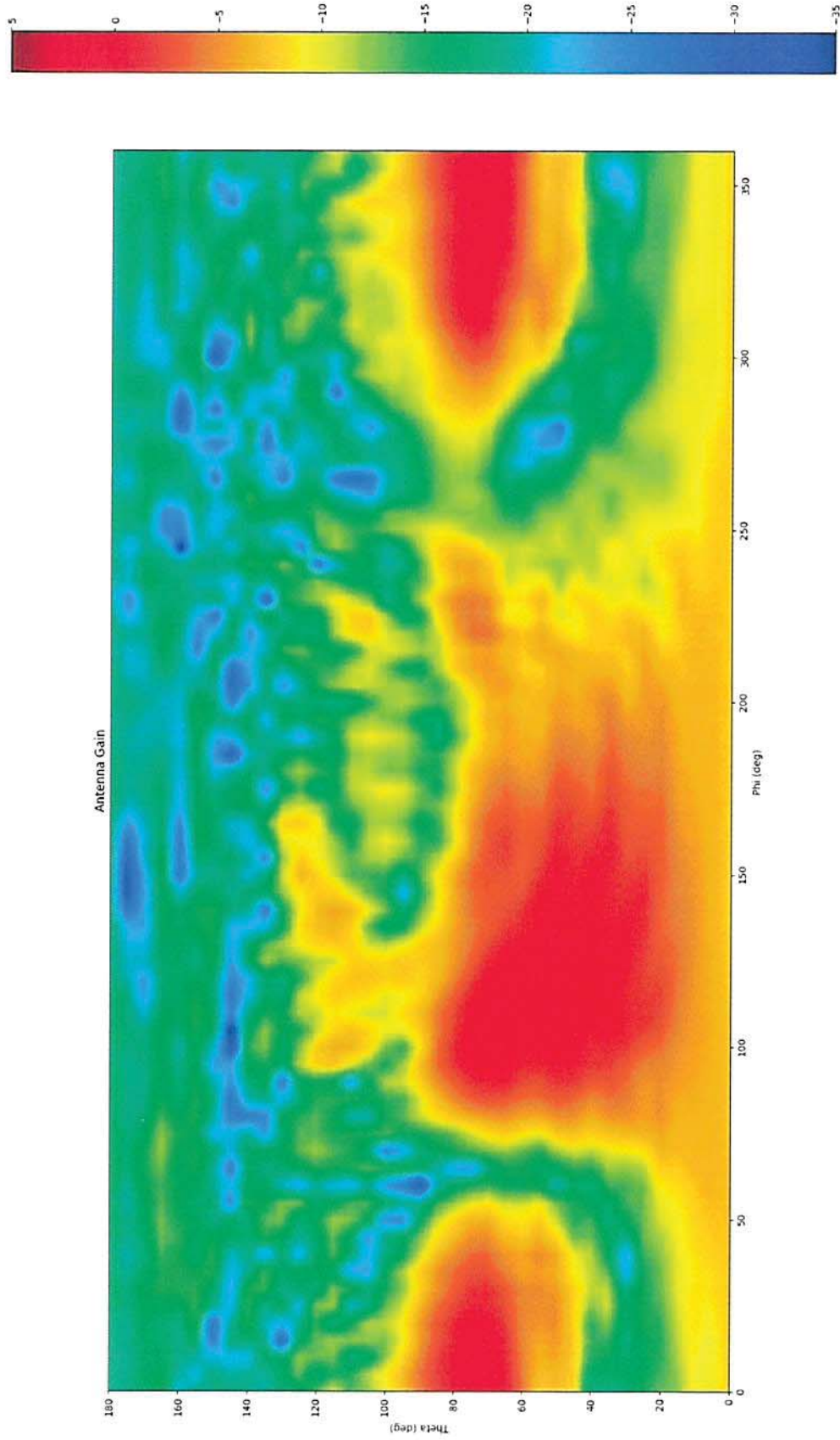


Figure 9-52: Sum intensity diagram, port2 @ 5825 MHz

The test results are only related to the items tested. This report shall not be reproduced except in full without the written approval of the testing laboratory.

