

## TCU2 NA IP30 - internal photo Passport

**Docupedia Export**

Date:15-Mar-2024 08:59

## **Table of Contents**

<b>1 TCU2 NA IP30 - All Inner views of the housing (each part)</b>	<b>4</b>
<b>2 TCU2 NA IP30 - PCB A Top</b>	<b>6</b>
<b>3 TCU2 NA IP30 - PCB A Bottom</b>	<b>7</b>
<b>4 TCU2 NA IP30 - Radio module in detail from PCB A</b>	<b>8</b>
<b>5 TCU2 NA IP30 - Radio module in detail from PCB A without shielding</b>	<b>9</b>
<b>6 TCU2 NA IP30 - All other inner parts</b>	<b>10</b>
<b>7 TCU2 NA IP30 - Internal photos of Auxillary equipment if applicable</b>	<b>12</b>

Issue	Confidential
Topic	<b>Internal Photo documentation for TCU2 NA IP30</b>
Description	Photo description for Telematic Control Unit

Product Type: Telematic Control Unit

Model Name: TCU2 NA IP30

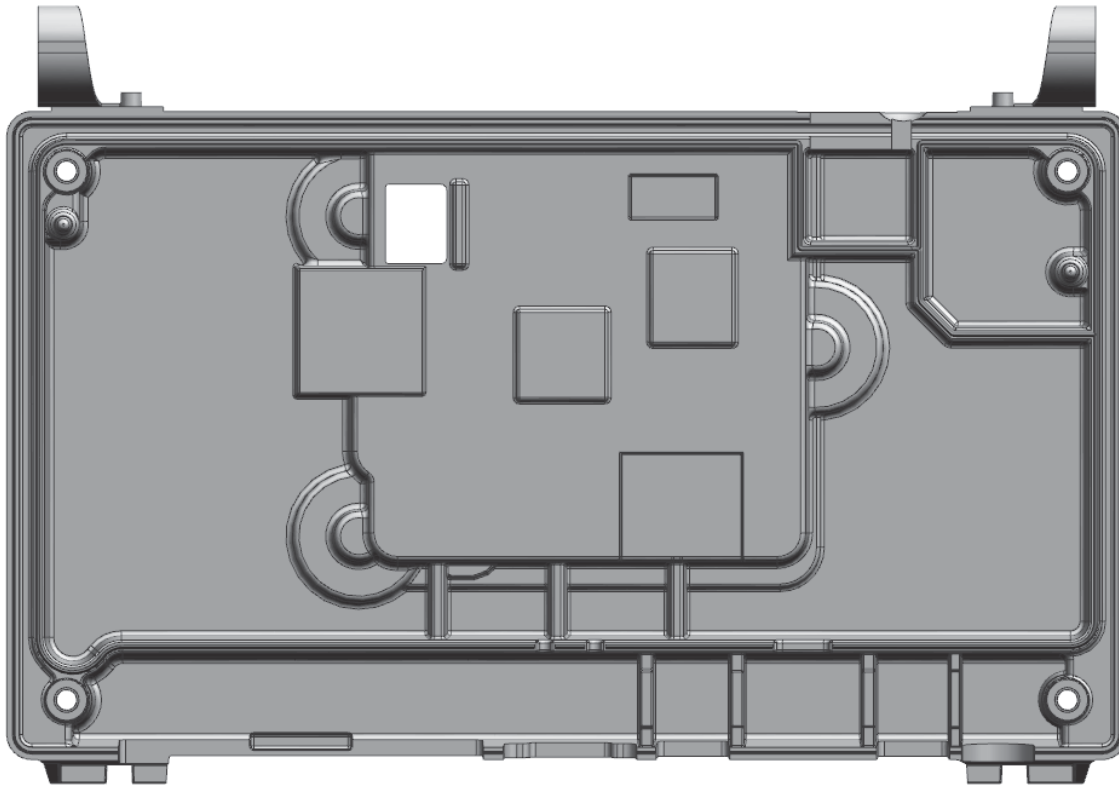
Variants: 1: -

2: -

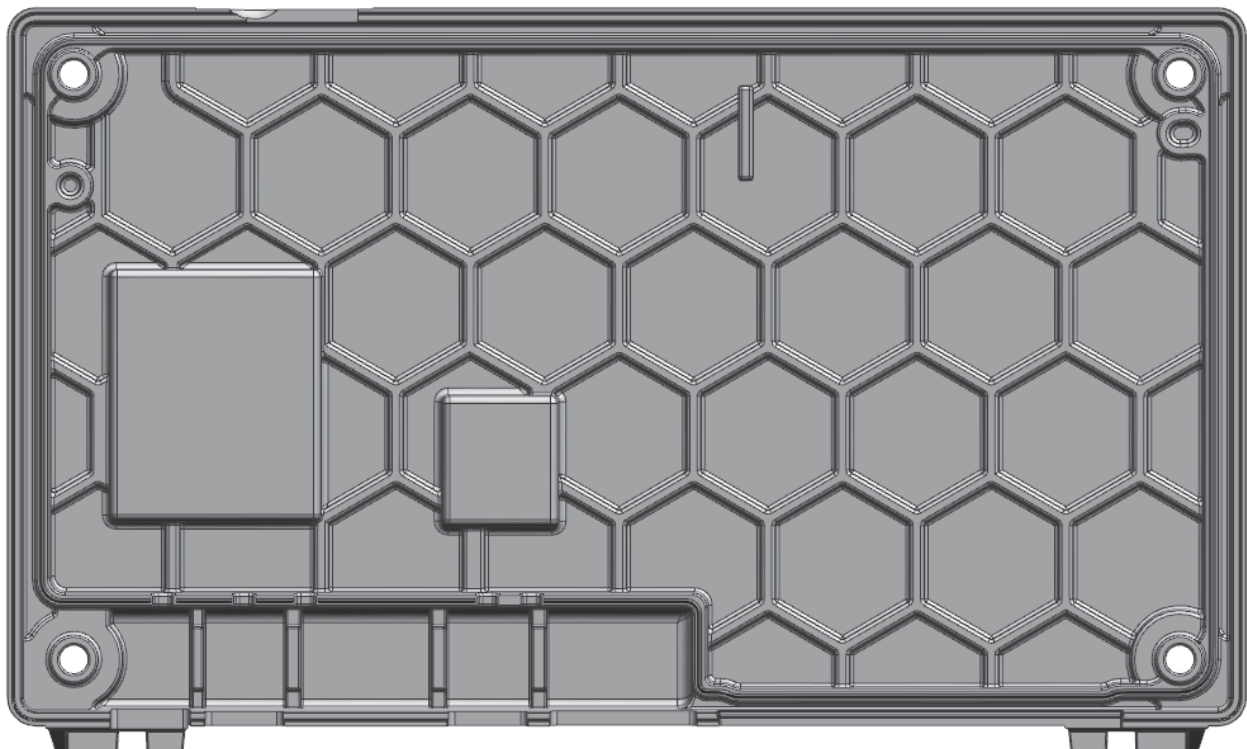
Brand: Bosch

# 1 TCU2 NA IP30 - All Inner views of the housing (each part)

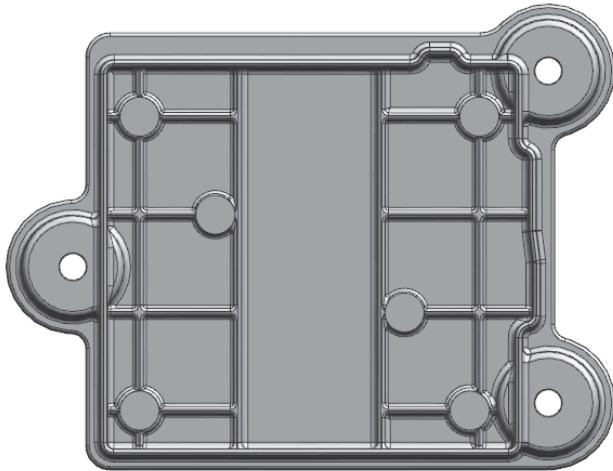
Housing Cover



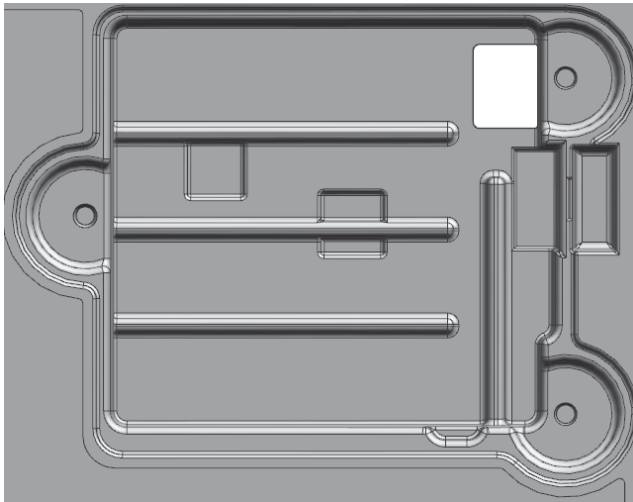
Housing Base



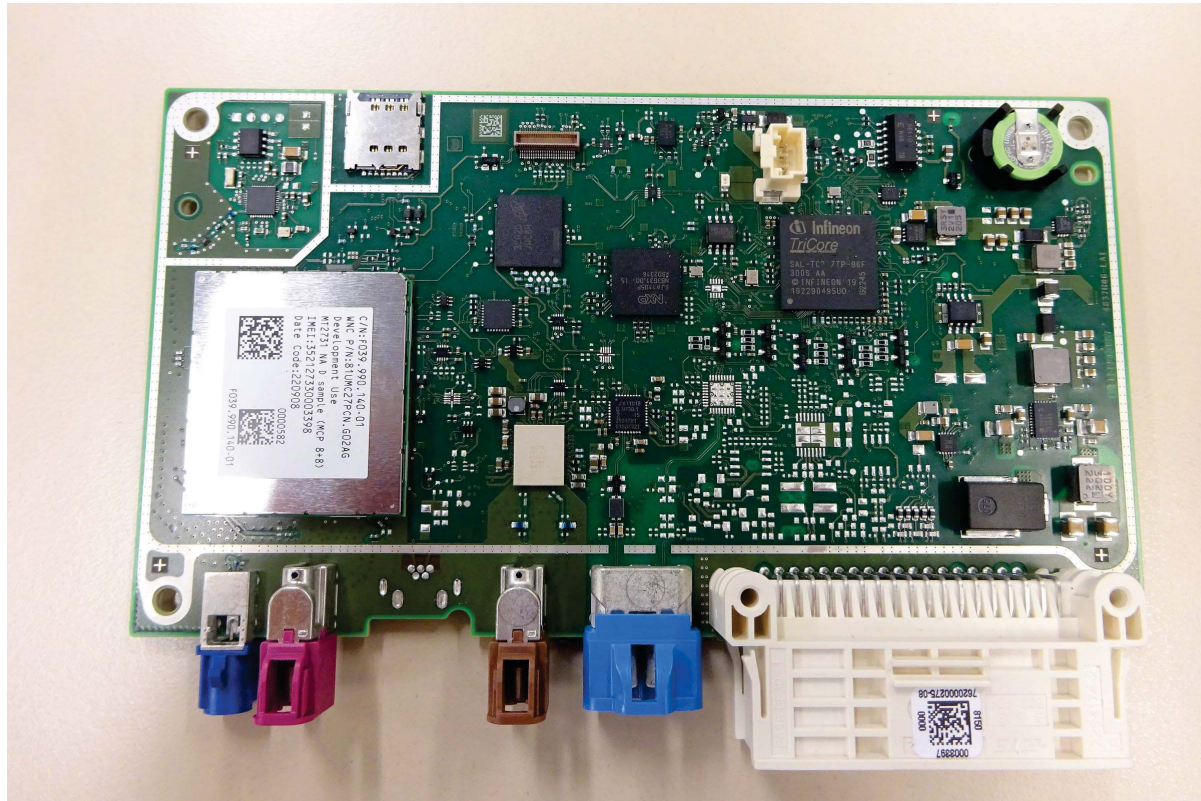
### Battery Cover



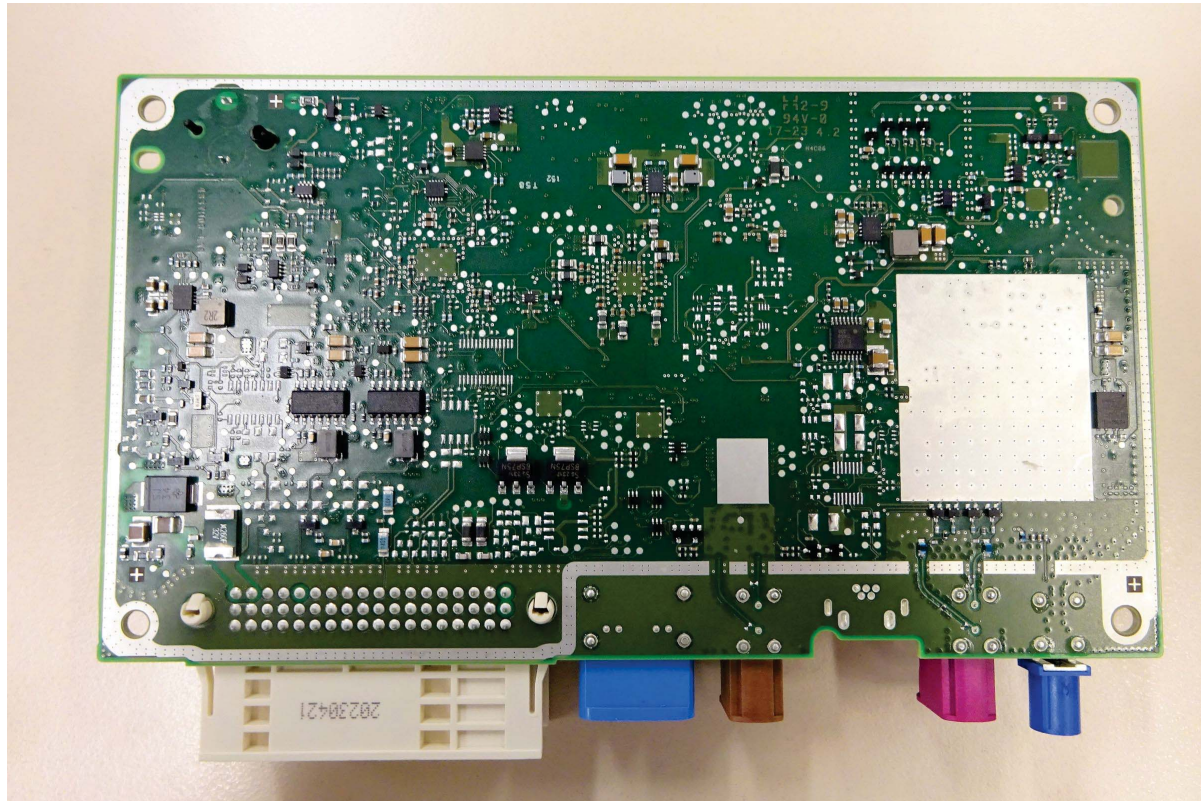
### Battery Compartment



## 2 TCU2 NA IP30 - PCB A Top



### 3 TCU2 NA IP30 - PCB A Bottom

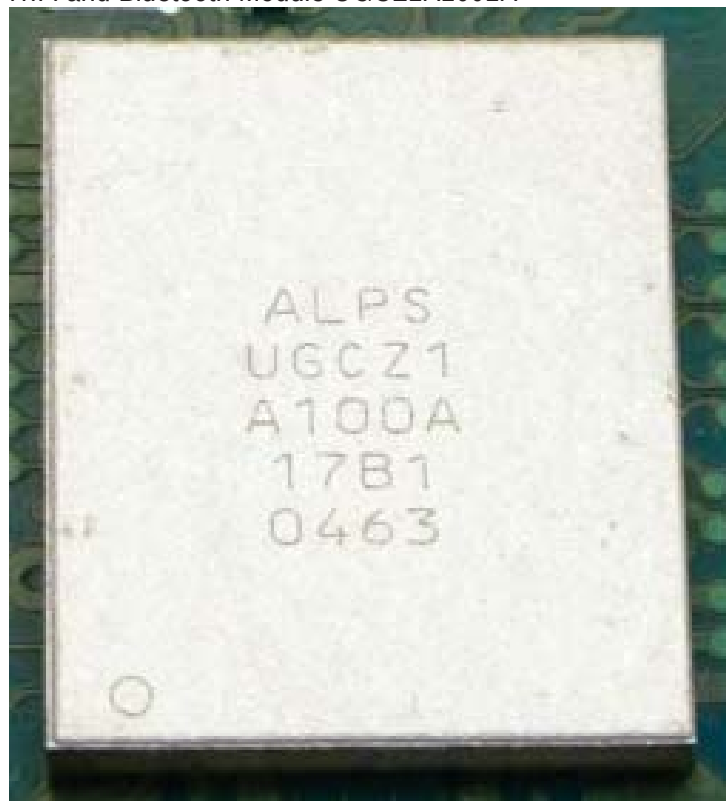


# 4 TCU2 NA IP30 - Radio module in detail from PCB A

NAD Module UMC-STD31BPN



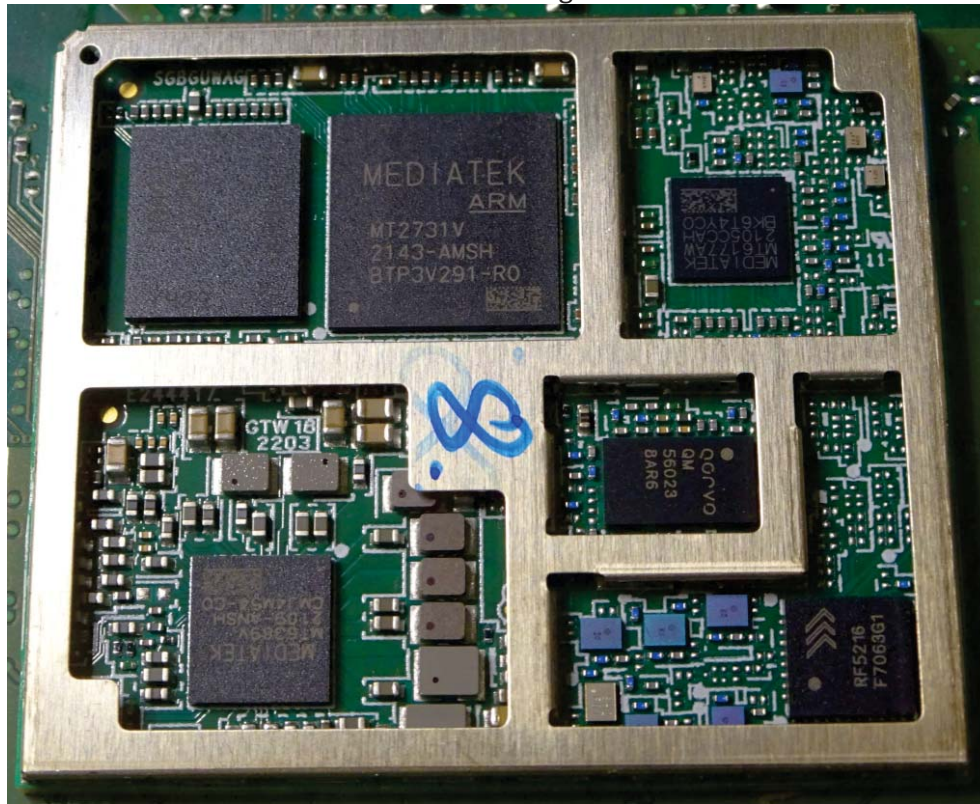
WiFi and Bluetooth Module UGCZ1A1001A





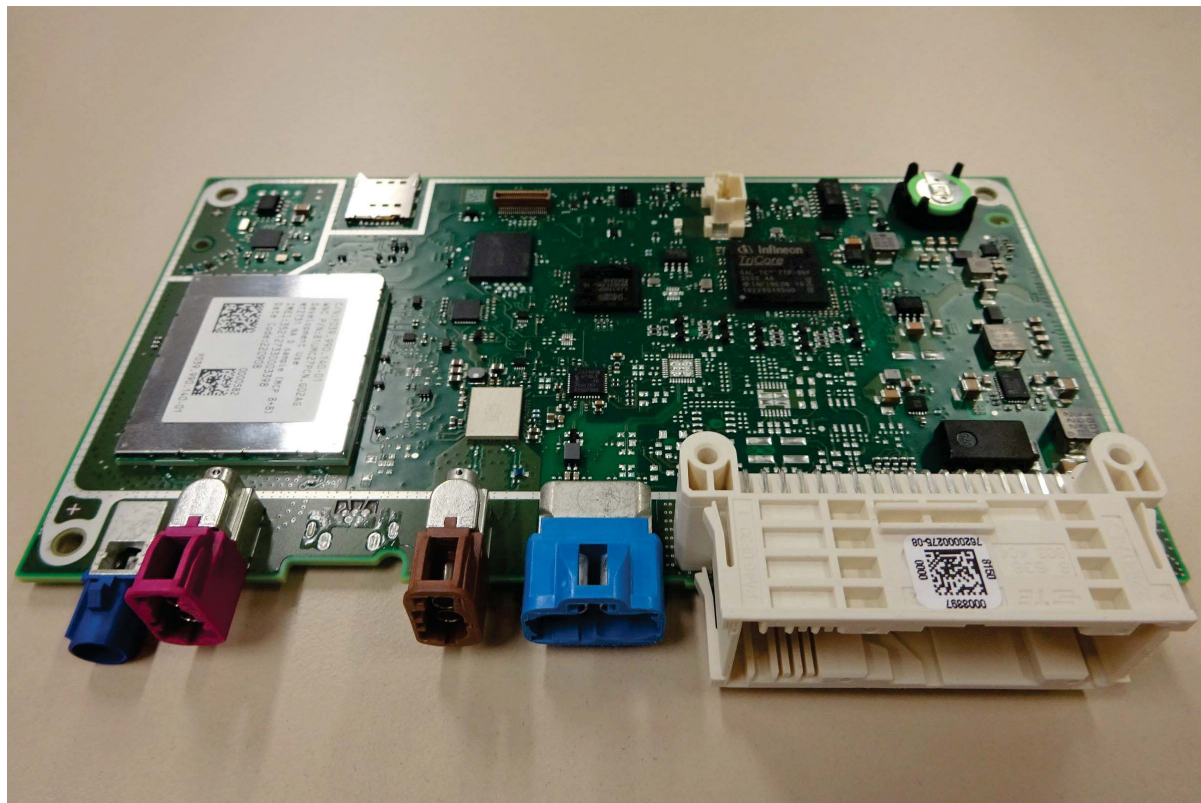
# 5 TCU2 NA IP30 - Radio module in detail from PCB A without shielding

NAD Module UMC-STD31BPN without shielding

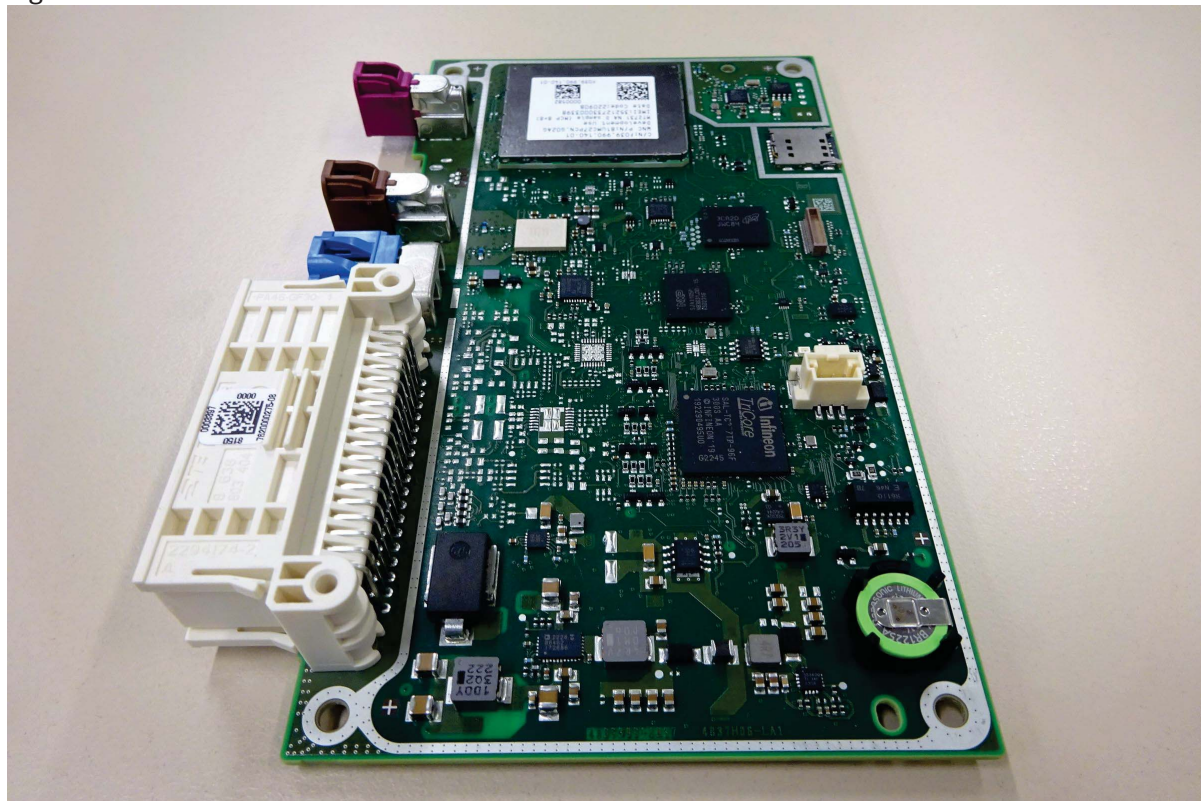


# 6 TCU2 NA IP30 - All other inner parts

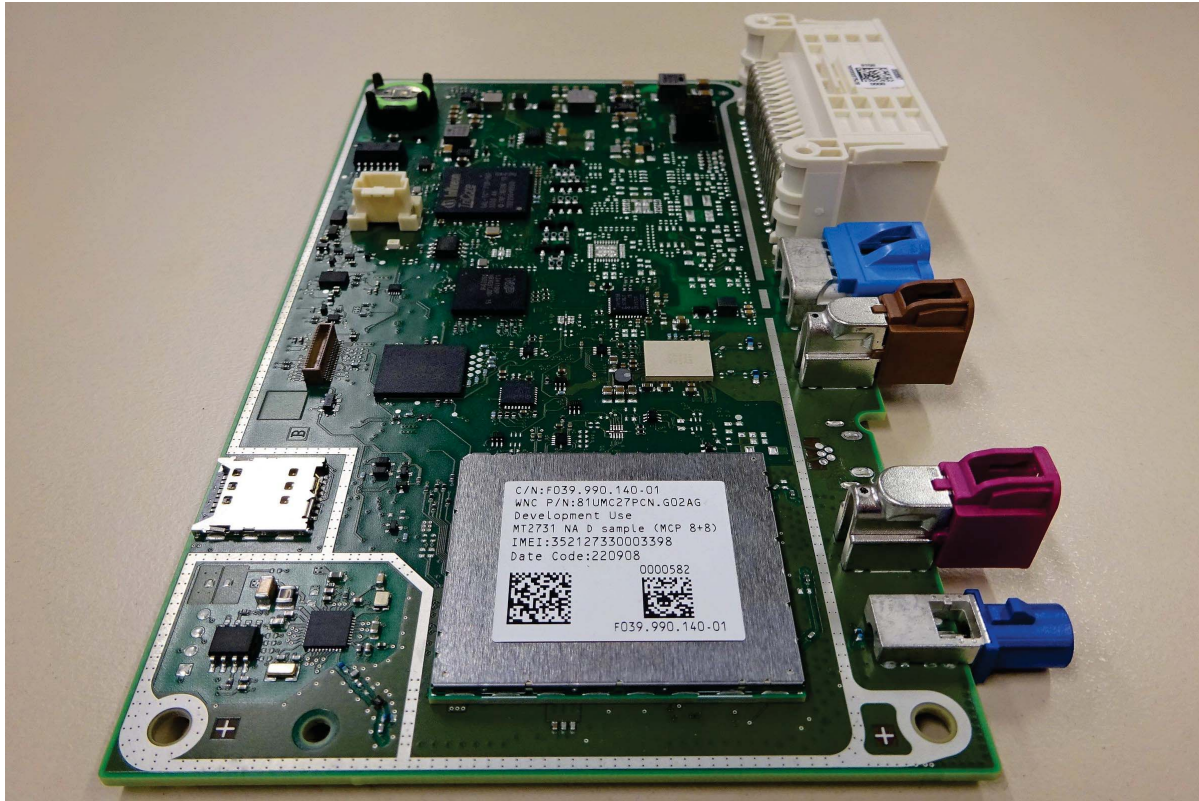
Connector view



Right side of TCU2



Left side of TCU2



## **7 TCU2 NA IP30 - Internal photos of Auxillary equipment if applicable**

Not applicable.