



HIRSCHMANN MOBILITY

BT WLAN Antenna

Part Number **920-584-312**

A 006 820 82 75

Features

- Interior Antenna with Plastic Clip

Technical Data

Dimensions	ca.	58 x 38 x 13 mm
Housing materials		PA66 black
Weight		16 g
Operations temp. range		-40 - +85 °C
Storage temp. range		-40 - +90 °C
Housing Protection class		IP 5kO (acc. EN60529)
Connector		Fakra male, Code K (Curry)

BT WLAN Antenna | Part Number 920-584-312

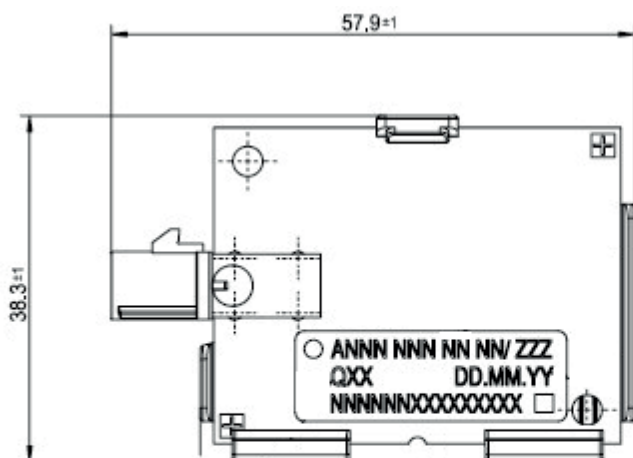
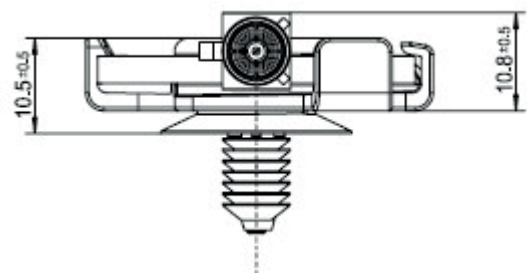
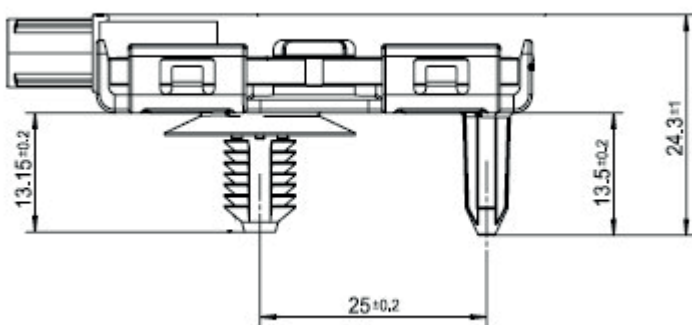
Technical Data

BT/WLAN	
Frequency bands	2400-2500 MHz 5150-5835 MHz
Return loss	> 7 dB
VSWR	< 2.6
Impedance	50 Ω
Average gain* (Theta=0 \pm 45°)	> -2 dBi
Peak gain*	2400-2500 MHz: 1 dBi 5150-5835 MHz: 6 dBi
Radiation efficiency**	2400-2500 MHz: > 40% 5150-5835 MHz: > 50%
Diagnostic Resistor	10 k Ω

* Measured on dielectric slab

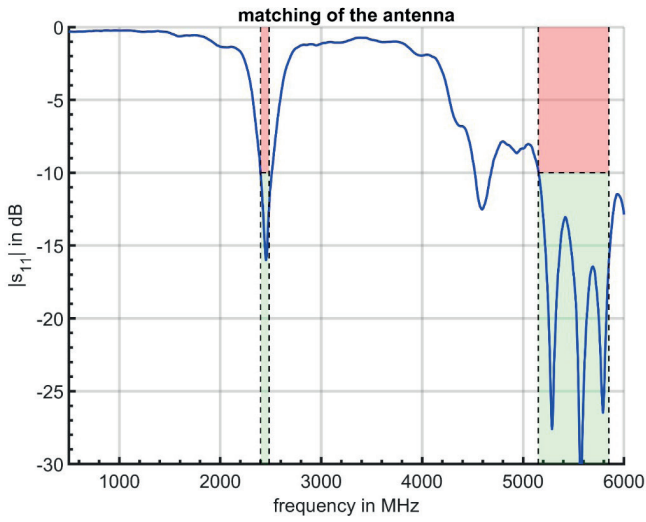
**including Filtering

Technical Drawing



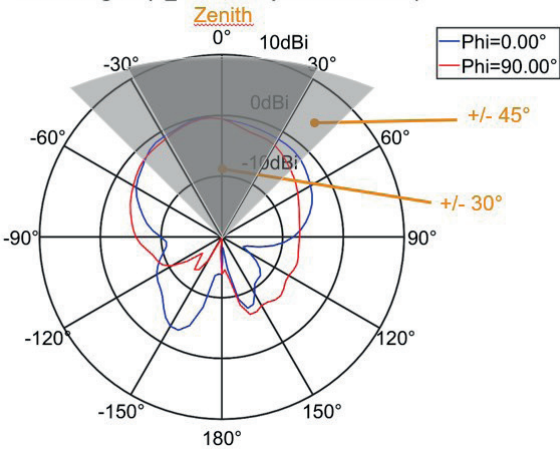
Antenna diagrams

S11 - Parameter

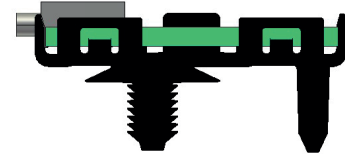


Polar Plots | 2400 MHz

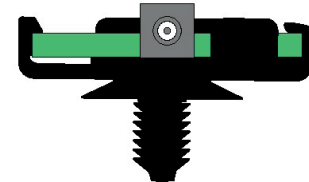
radiation pattern of the antenna (elevation cut)
realized gain (E_Total, Freq = 2400.00 MHz)



Phi = 0°

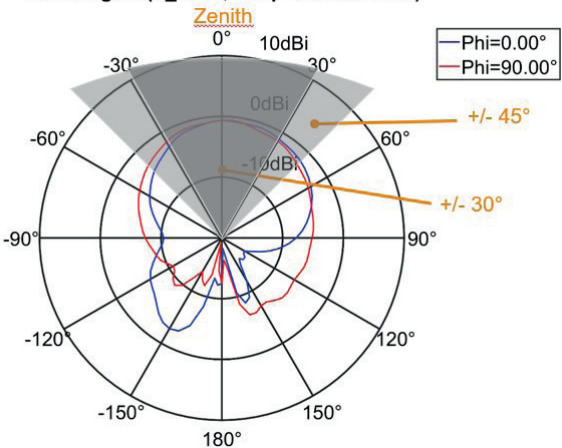


Phi = 90°



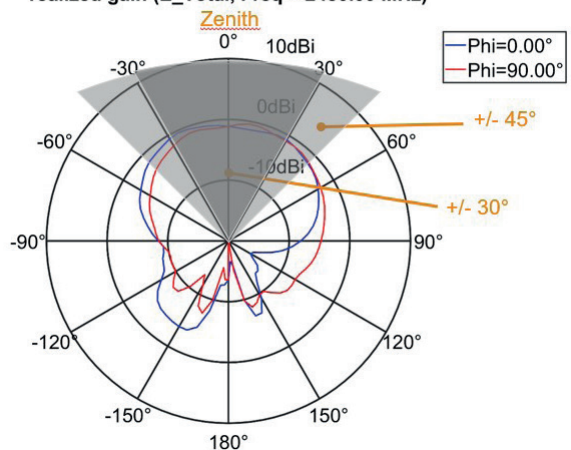
Polar Plots | 2440 MHz

radiation pattern of the antenna (elevation cut)
realized gain (E_Total, Freq = 2440.00 MHz)



Polar Plots | 2480 MHz

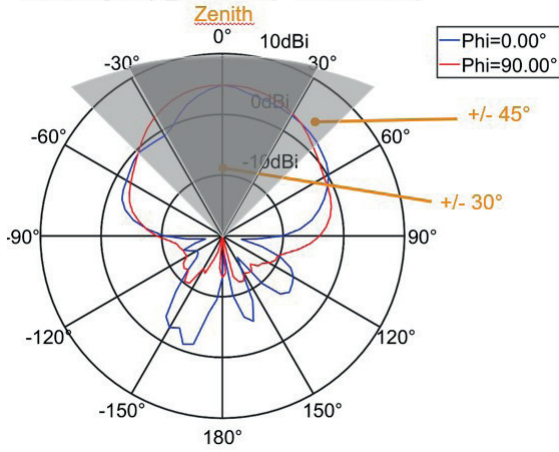
radiation pattern of the antenna (elevation cut)
realized gain (E_Total, Freq = 2480.00 MHz)



Antenna diagrams

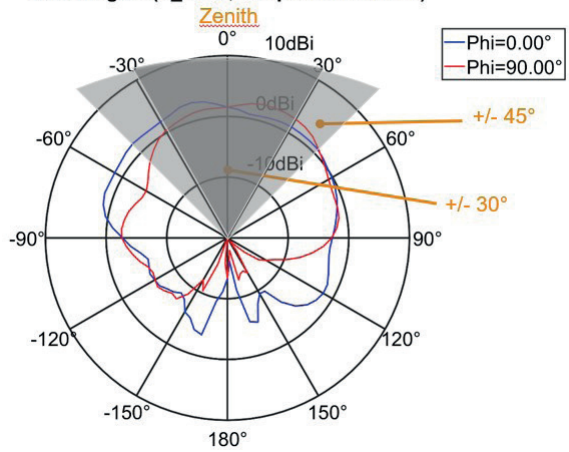
Polar Plots | 5150 MHz

radiation pattern of the antenna (elevation cut)
realized gain (E_Total, Freq = 5150.00 MHz)



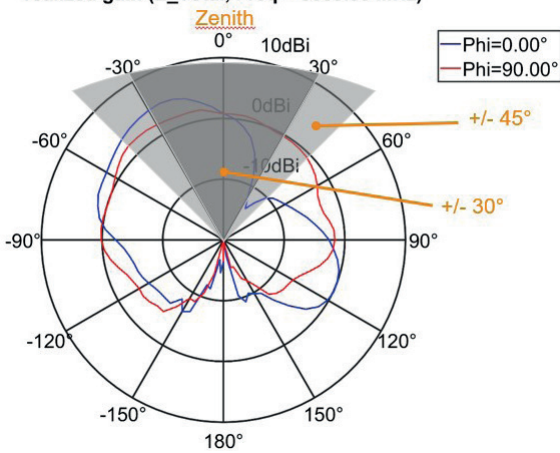
Polar Plots | 5500 MHz

radiation pattern of the antenna (elevation cut)
realized gain (E_Total, Freq = 5500.00 MHz)



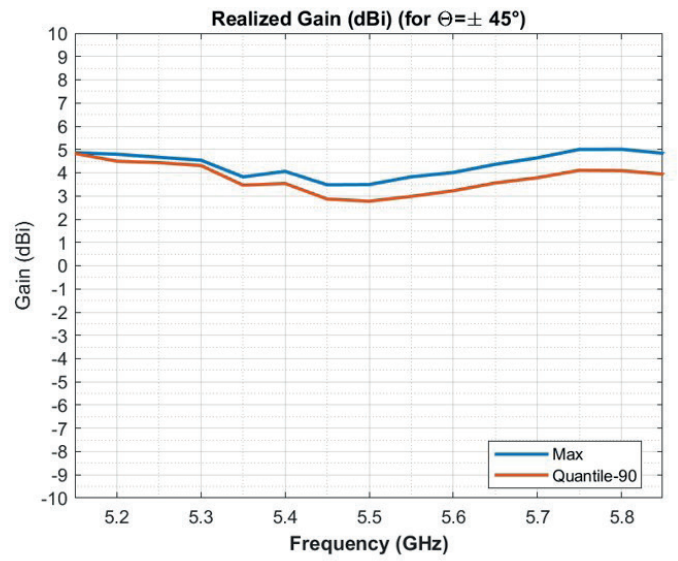
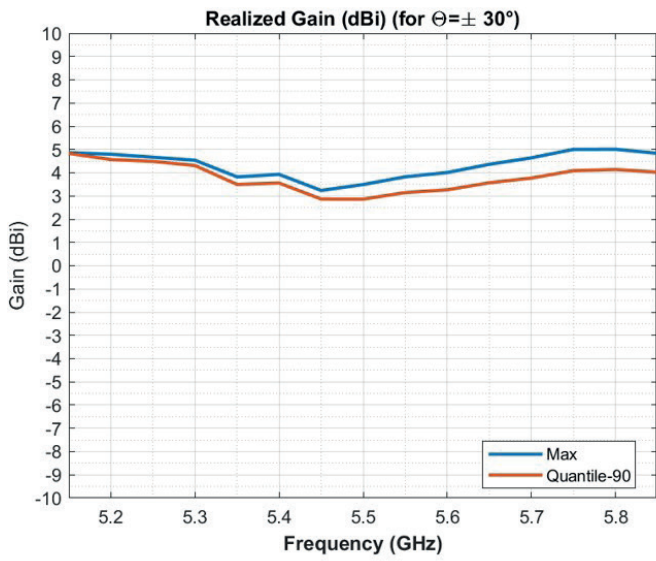
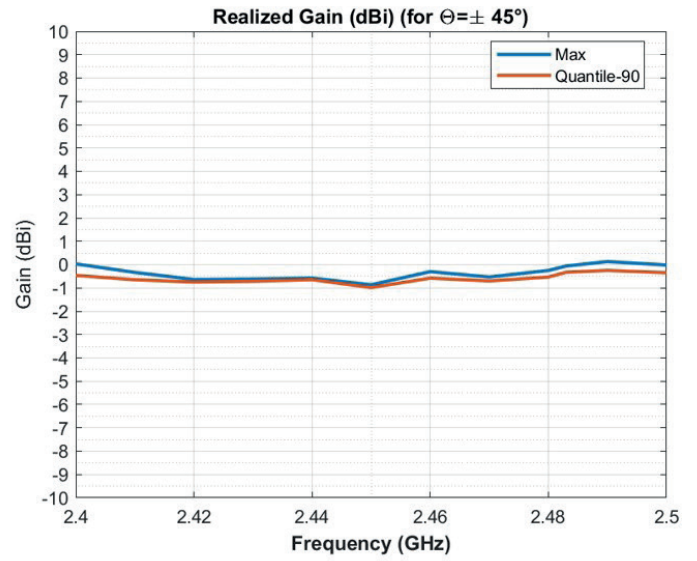
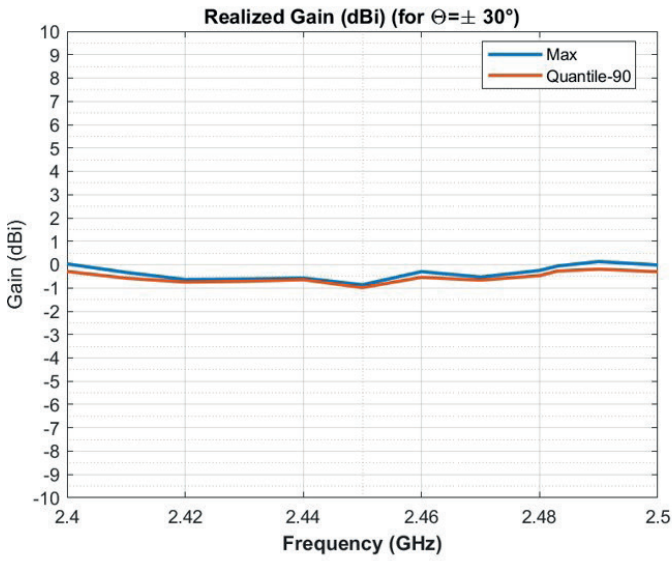
Polar Plots | 5850 MHz

radiation pattern of the antenna (elevation cut)
realized gain (E_Total, Freq = 5850.00 MHz)



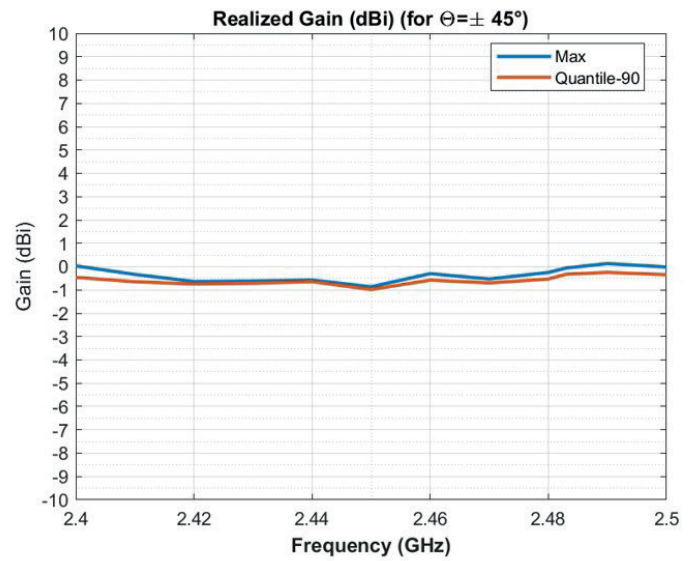
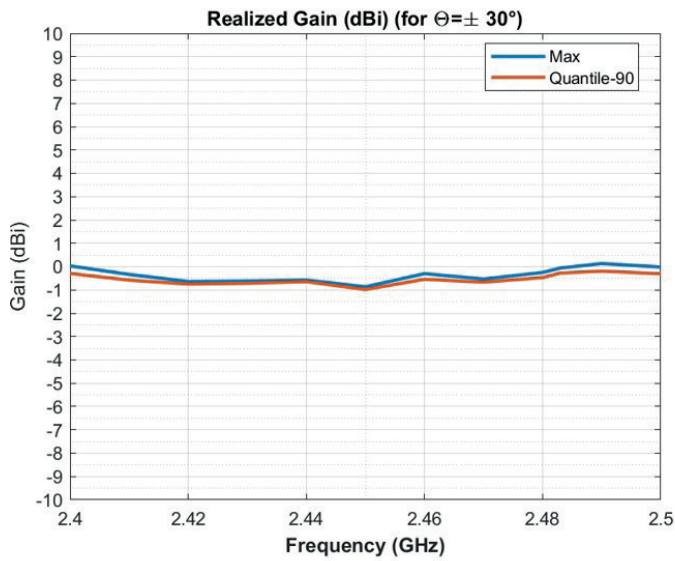
Antenna diagrams

Gain over Frequency



Antenna diagrams

CDF over Frequency



te.com/hirschmann-mobility

hirschmann-mobility@te.com

Hirschmann Car Communication GmbH,
a TE Connectivity Company
Stuttgarter Strasse 45-51
72654 Neckartenzlingen | Germany
Phone: +49 7127 14-0 | Fax: +49 7127 14-1428

TE, TE Connectivity, and TE connectivity (logo) are trademarks.
Hirschmann, Bluetooth and Fakra are trademarks.
Other products and/or company names might be trademarks of their respective owners.

DISCLAIMER While TE Connectivity (TE) has made every reasonable effort to ensure the accuracy of the information in this data sheet, TE does not guarantee that it is error-free, nor does TE make any other representation, warranty or guarantee that the information is accurate, correct, reliable or current. TE reserves the right to make any adjustments to the information contained herein at any time without notice. TE expressly disclaims all implied warranties regarding the information contained herein, including, but not limited to, any implied warranties of merchantability or fitness for a particular purpose. The dimensions in this data sheet are for reference purposes only and are subject to change without notice. Specifications are subject to change without notice. Consult TE for the latest dimensions and design specifications.

© 2022 TE Connectivity. All Rights Reserved. | Published 03-2023