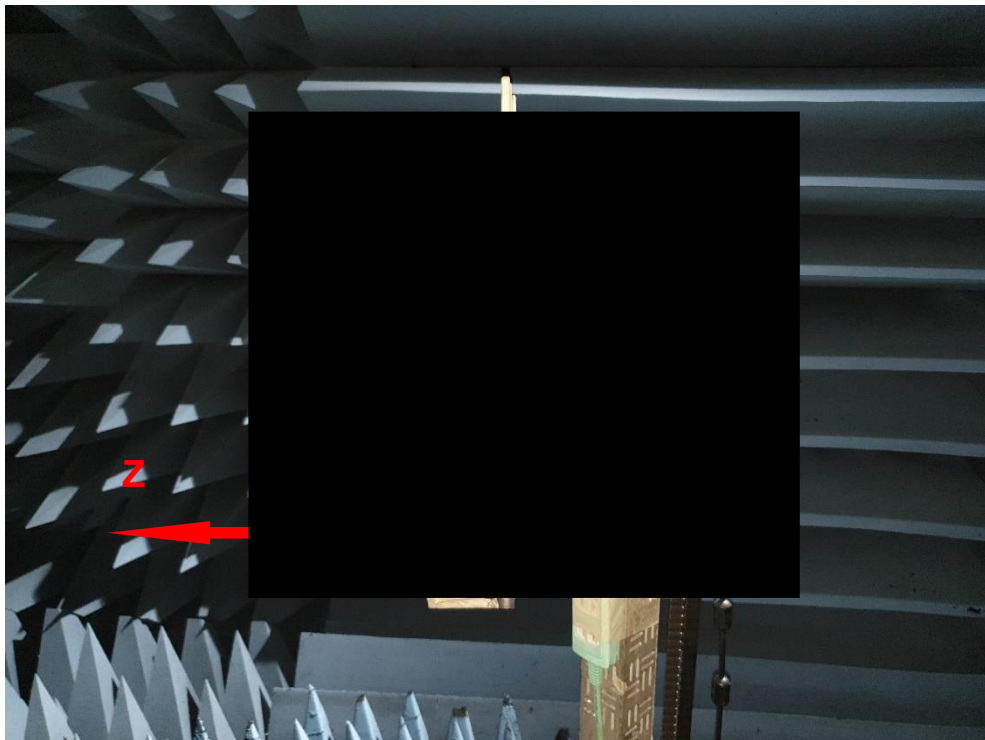
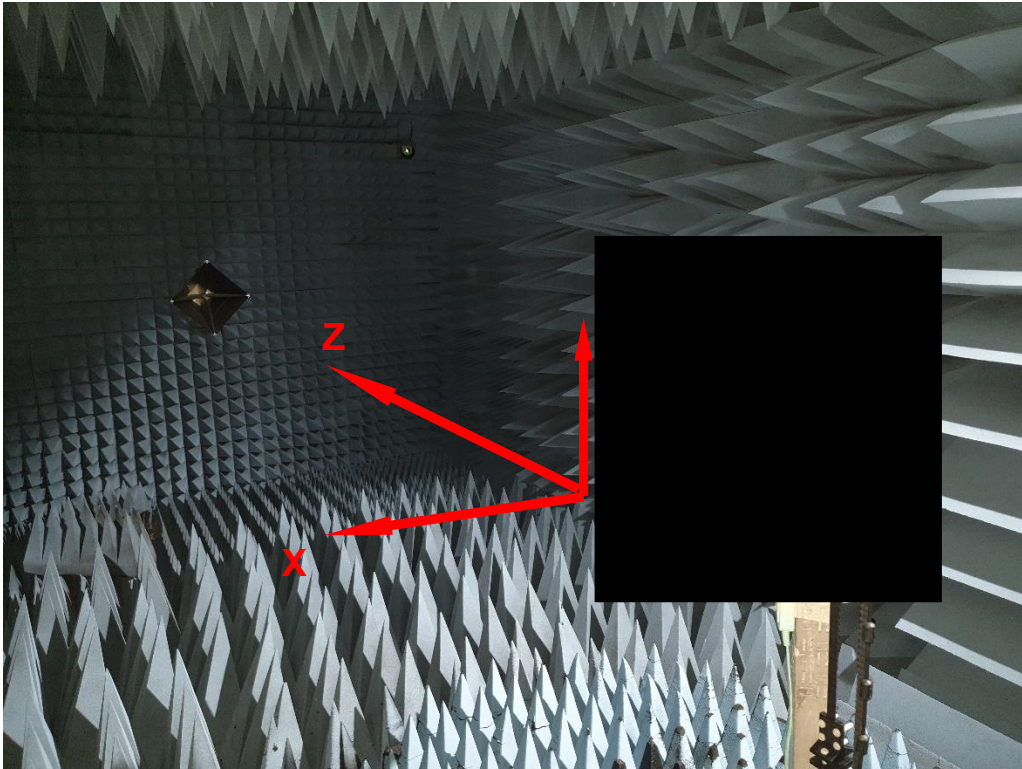


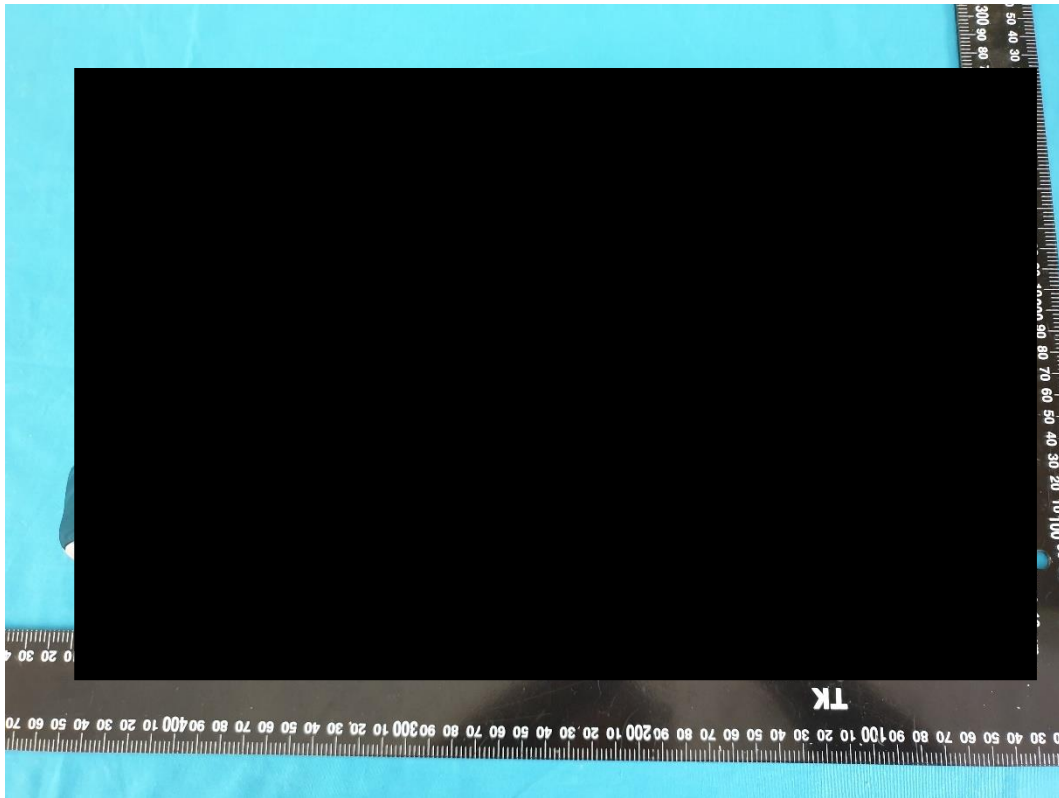
Antenna Specification

Product Name	Display Assy-Meter & AV
Supplier	Melco
Display Type P/N	DU-7NJ233A
Antenna Manufacture	NISSEI ELECTRIC
Part No.	ANT2420-161CW/U-AB
Antenna Type	Metal Plate Antenna
Specification Version	V.3

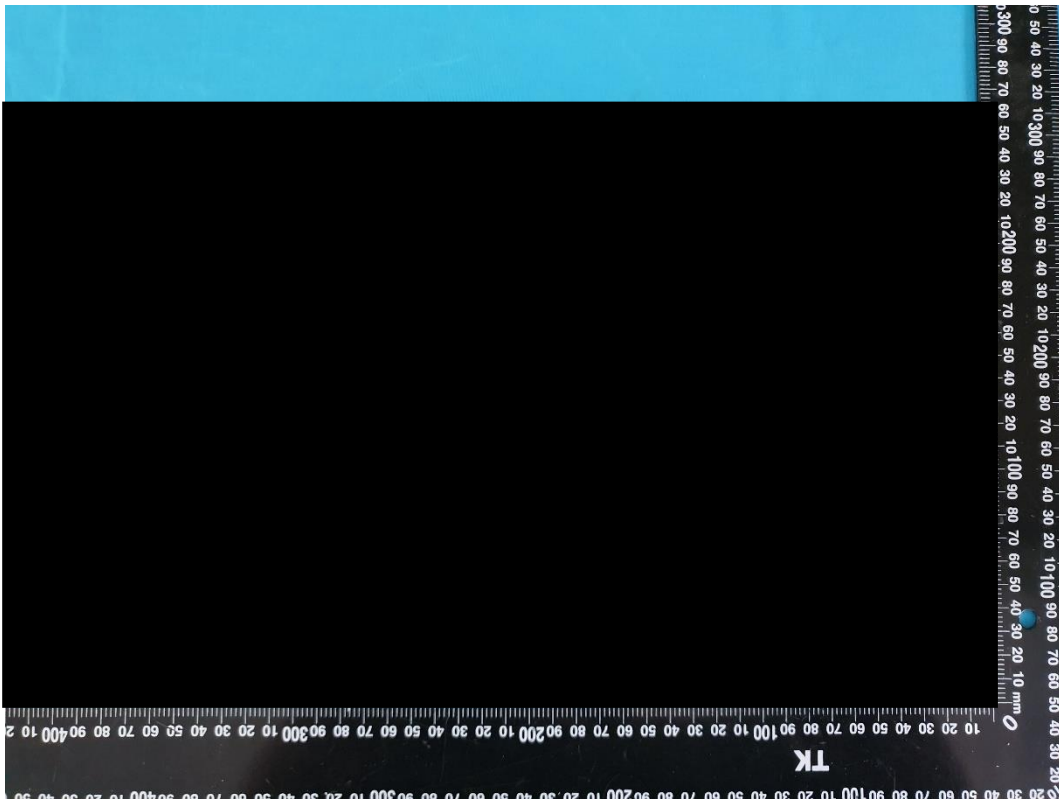
1. Test Setup
(1) XYZ Plance



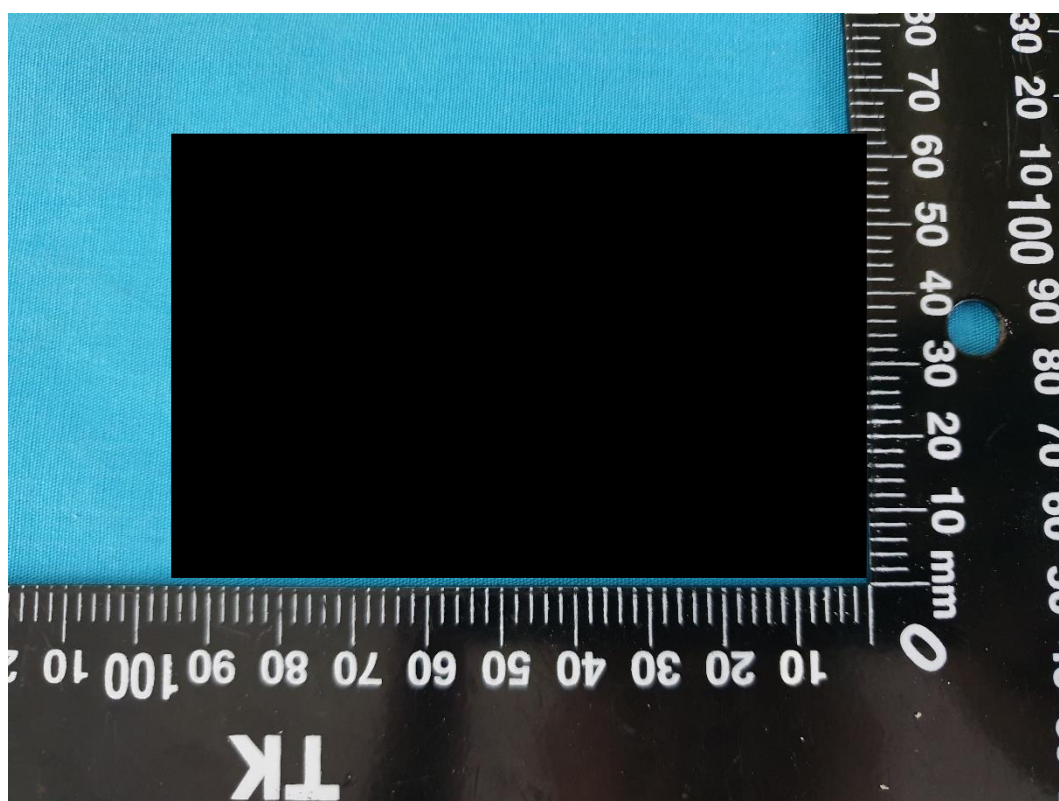
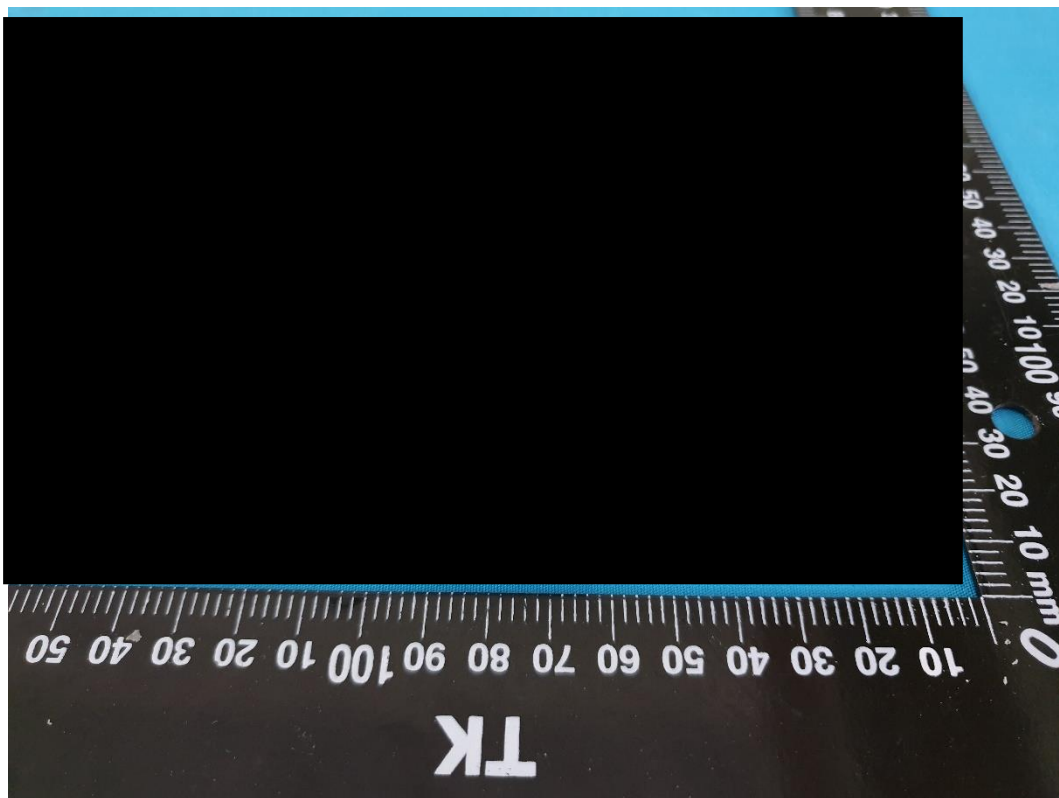
2. Dimensioned Photo
(1) Front Photo



(2) Back Photo

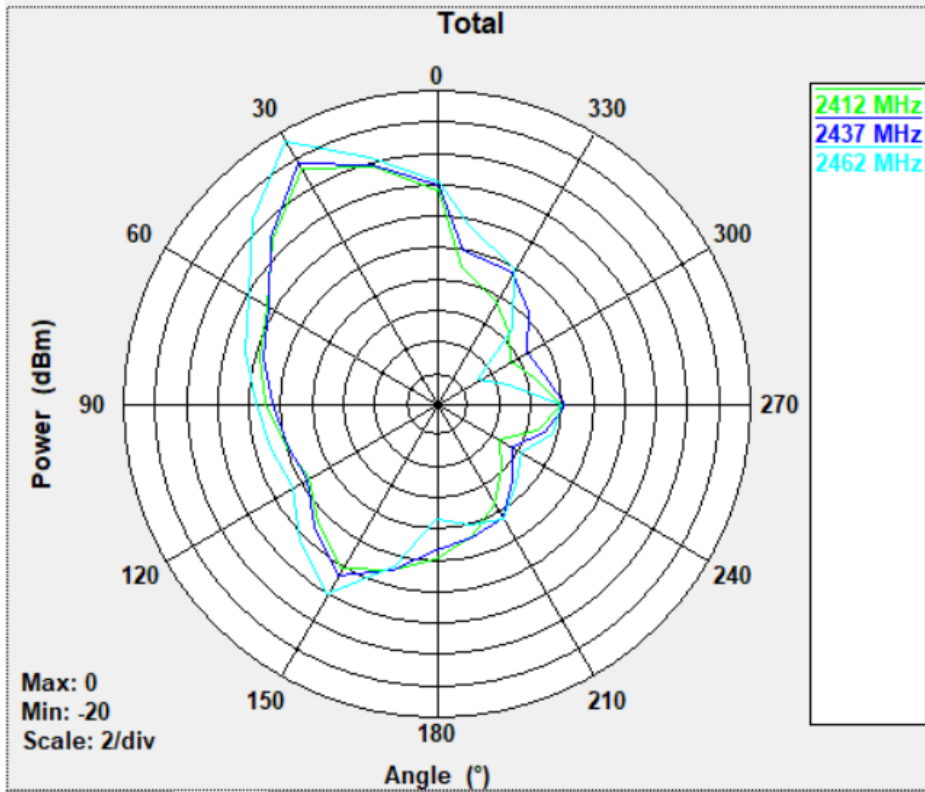


(3) Antenna Photo

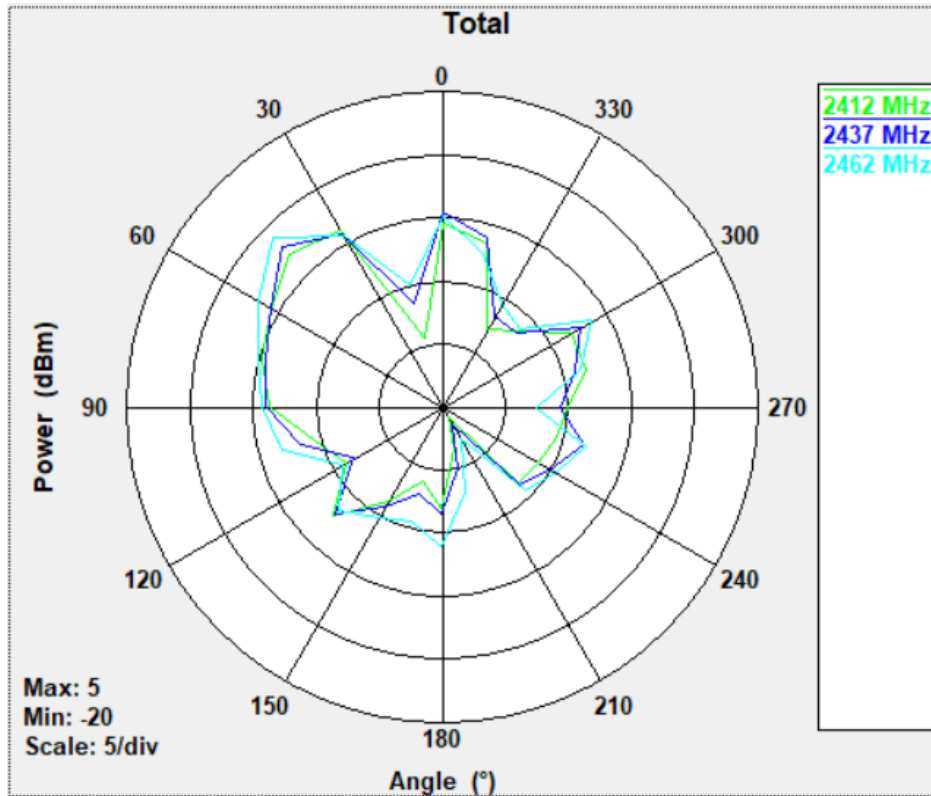


3. 2D Antenna Pattern

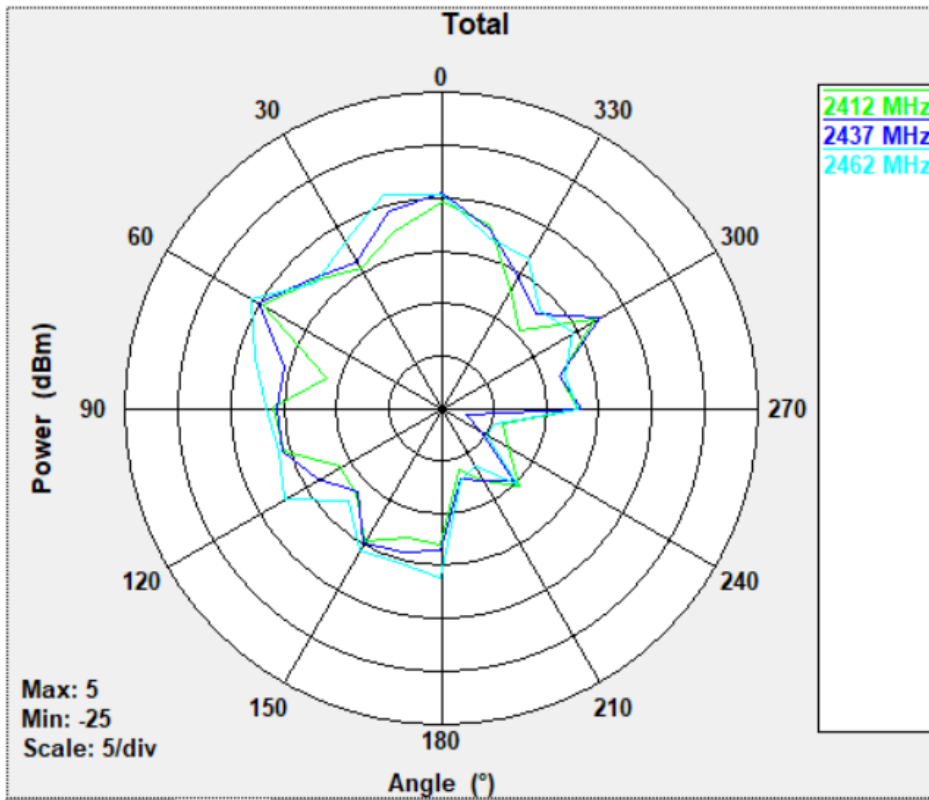
(1) X-Y : 2412MHz, 2437MHz, 2462MHz



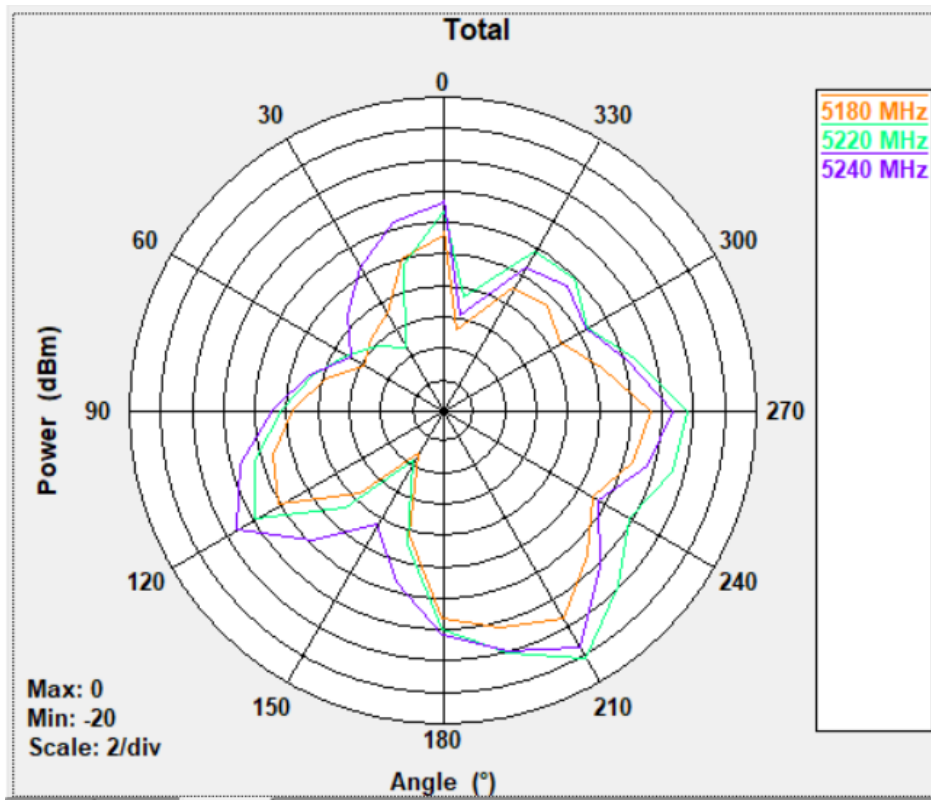
(2) X-Z : 2412MHz, 2437MHz, 2462MHz



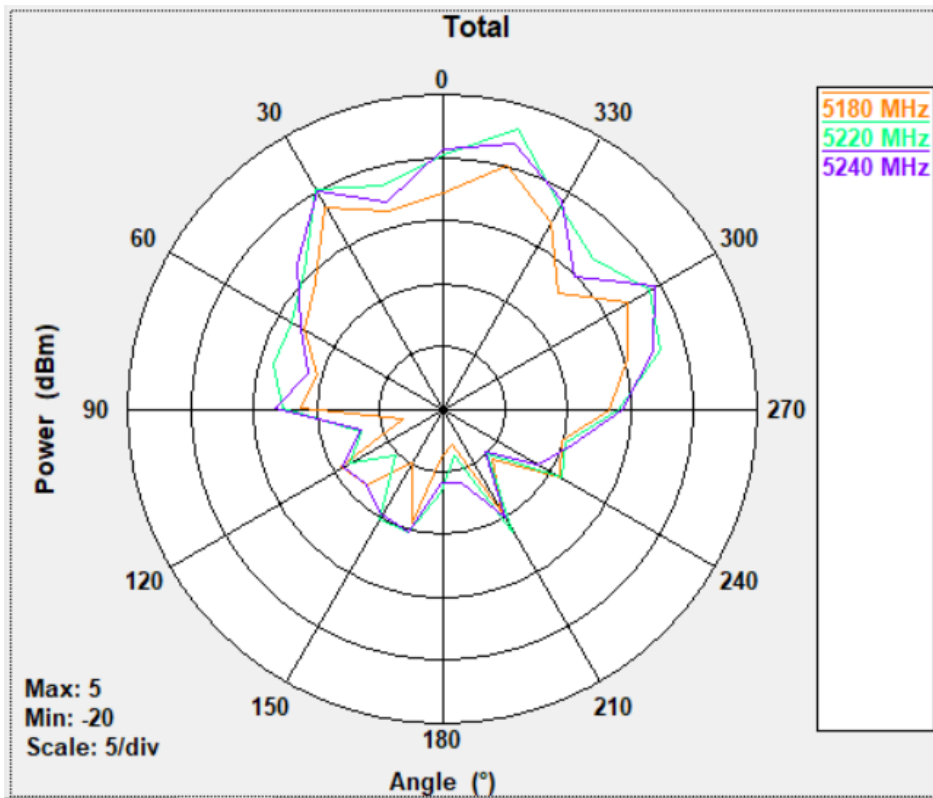
(3) Y-Z : 2412MHz, 2437MHz, 2462MHz



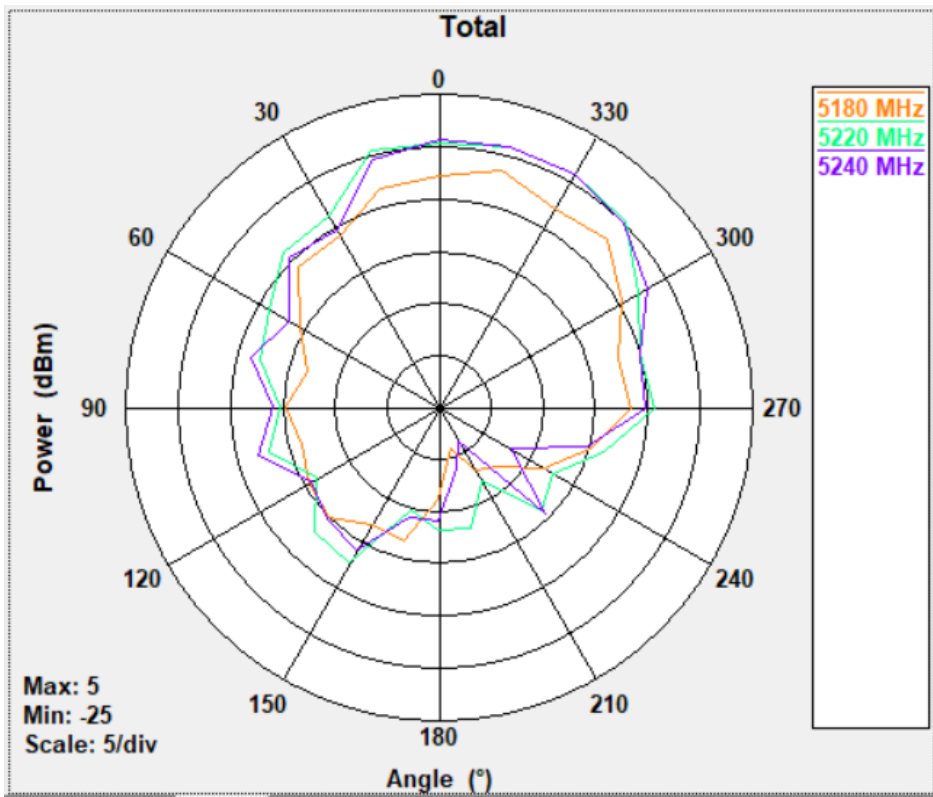
(4) X-Y : 5180MHz, 5220MHz, 5240MHz



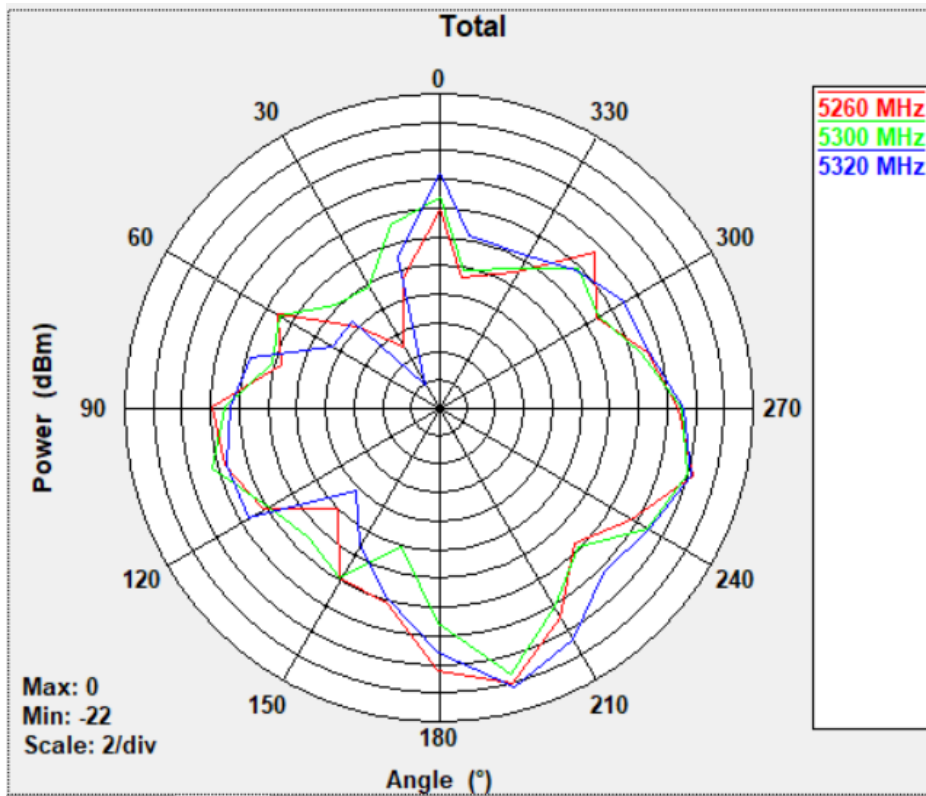
(5) X-Z : 5180MHz, 5220MHz, 5240MHz



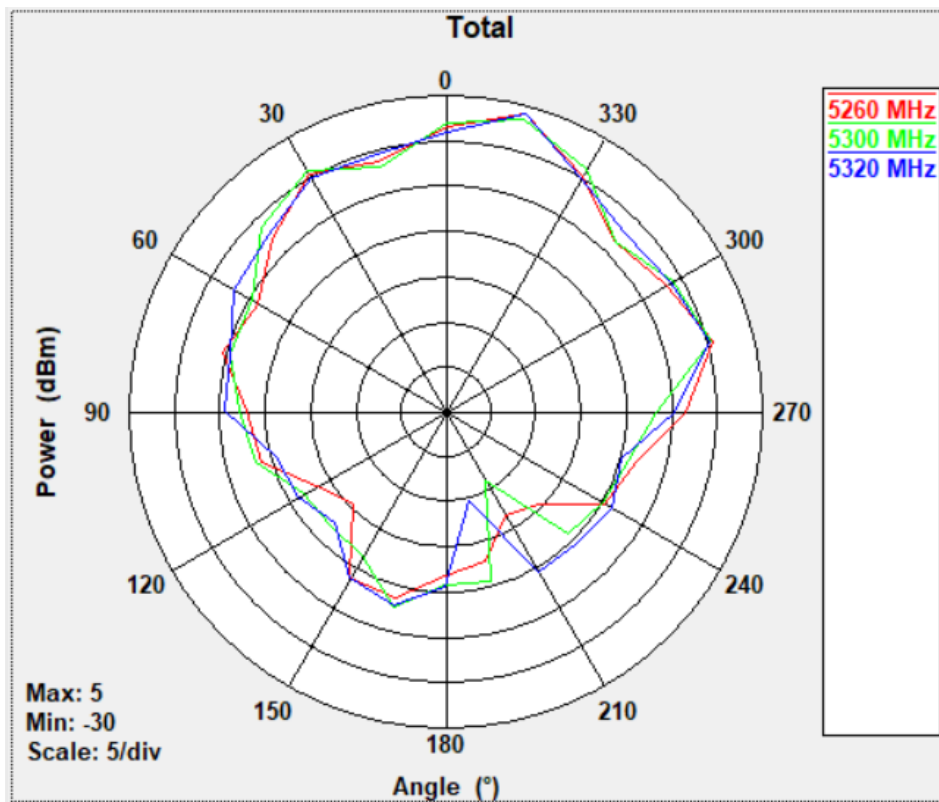
(6) Y-Z : 5180MHz, 5220MHz, 5240MHz



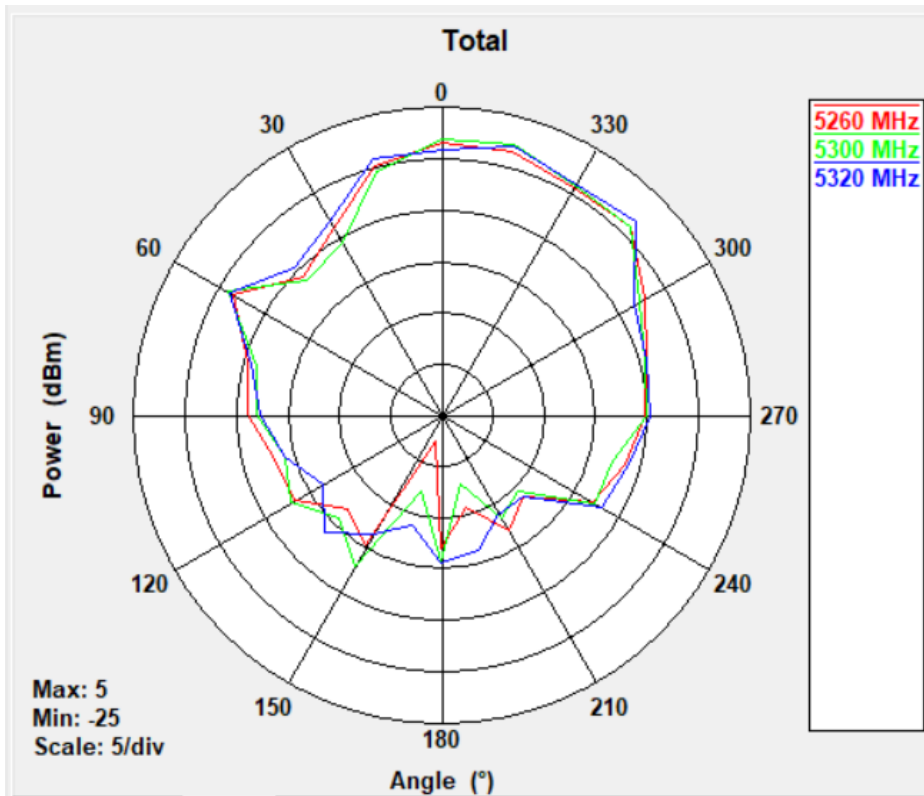
(7) X-Y : 5260MHz, 5300MHz,5320MHz



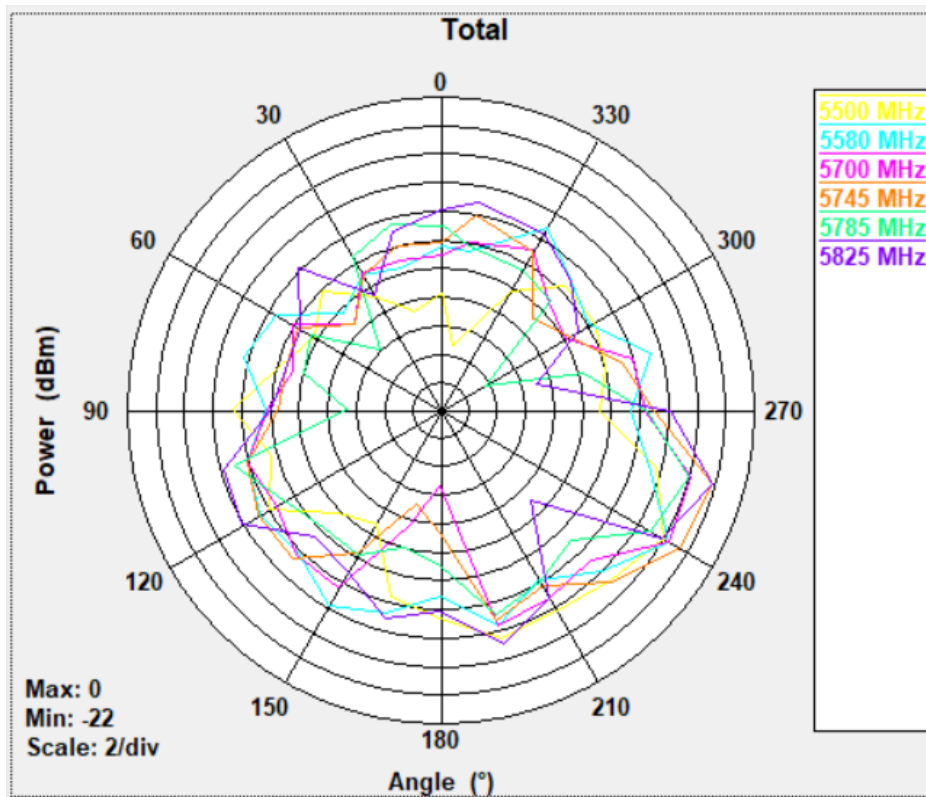
(8) X-Z : 5260MHz, 5300MHz,5320MHz



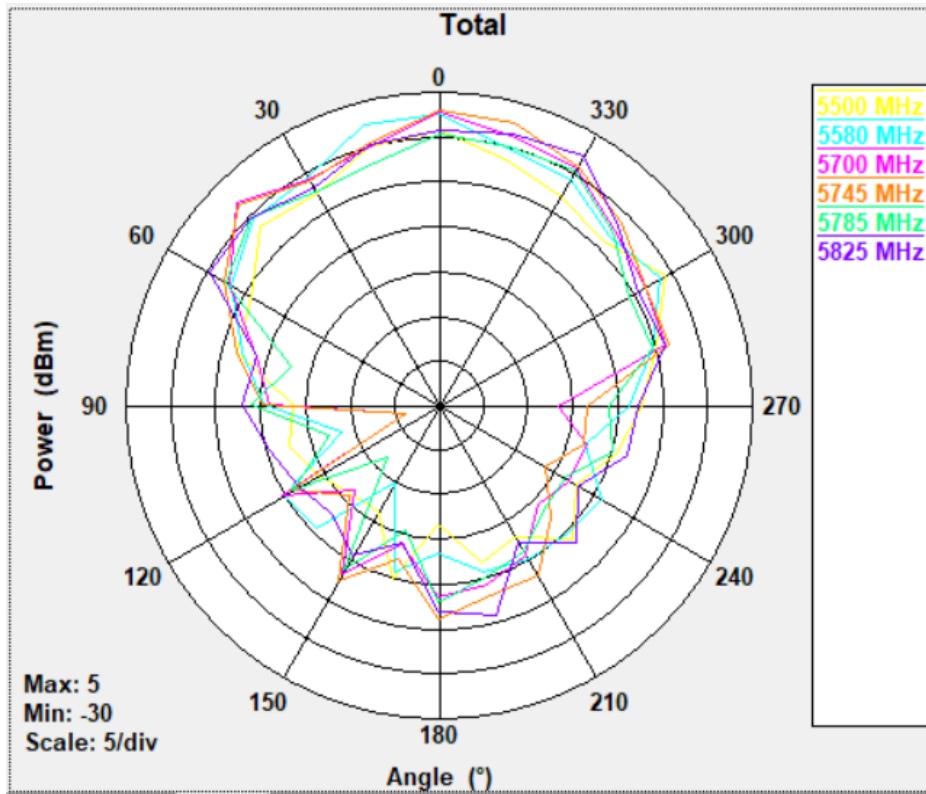
(9) Y-Z : 5260MHz, 5300MHz,5320MHz



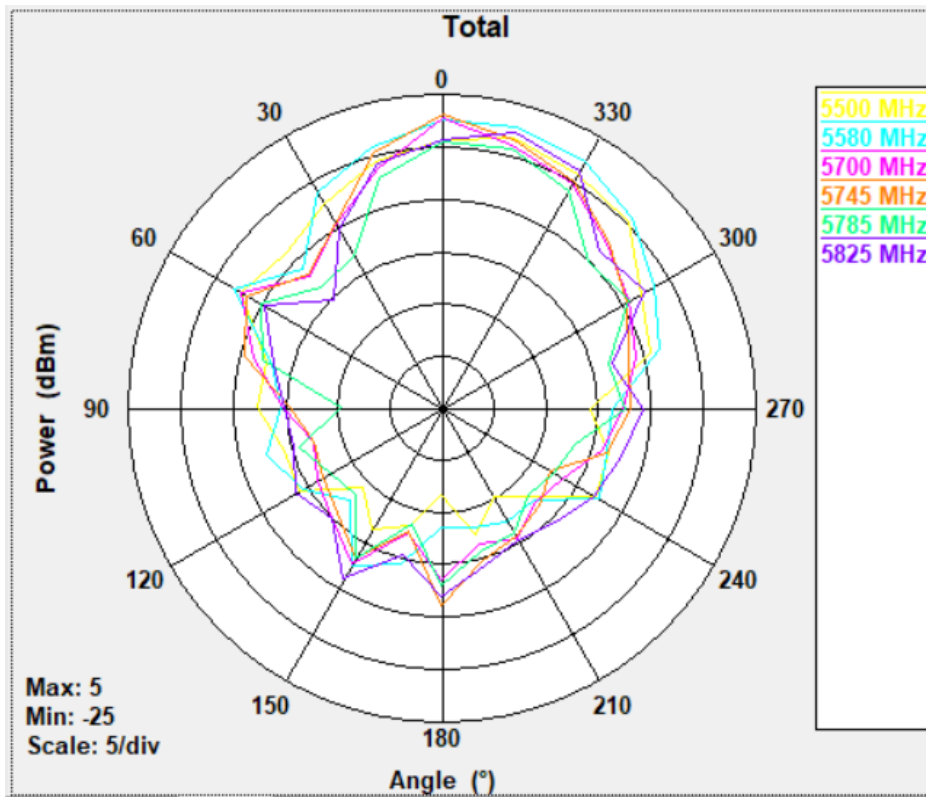
(10) X-Y: 500MHz, 5580MHz, 5700MHz, 5745MHz, 5785MHz, 5825MHz



(11) X-Z: 500MHz, 5580MHz, 5700MHz, 5745MHz, 5785MHz, 5825MHz

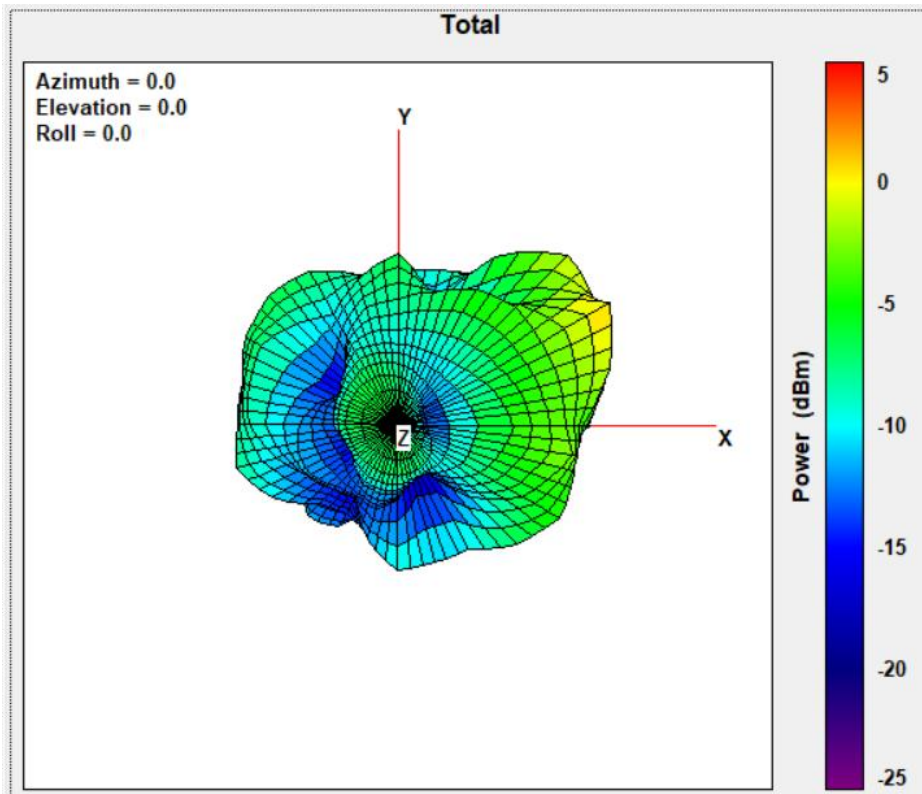


(12) Y-Z: 500MHz, 5580MHz, 5700MHz, 5745MHz, 5785MHz, 5825MHz

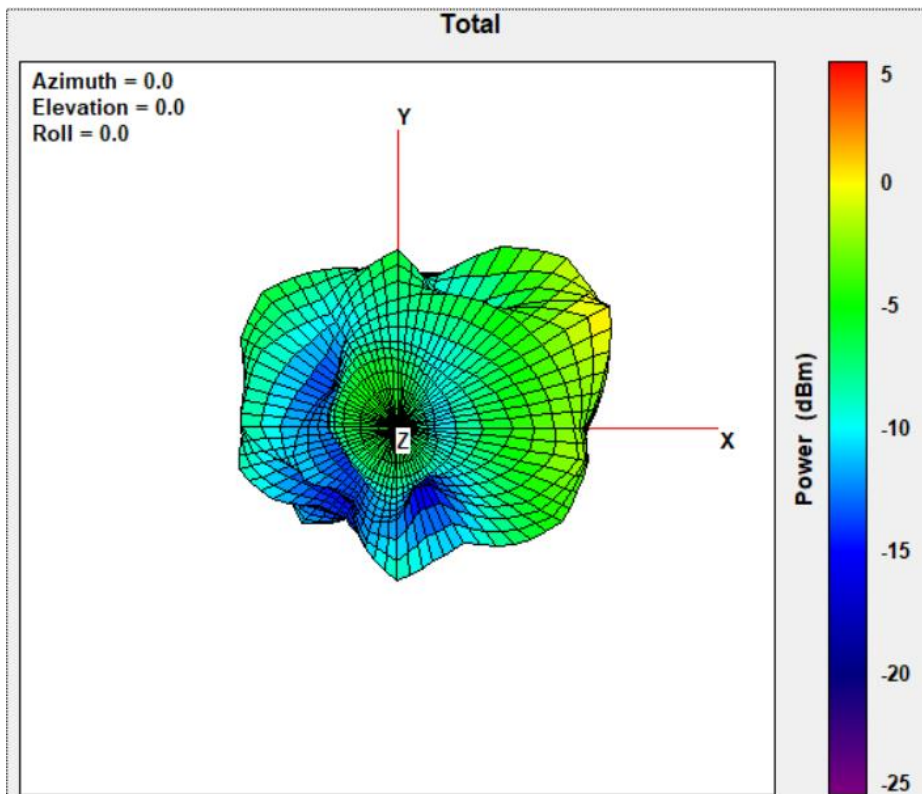


4. 3D Antenna Pattern

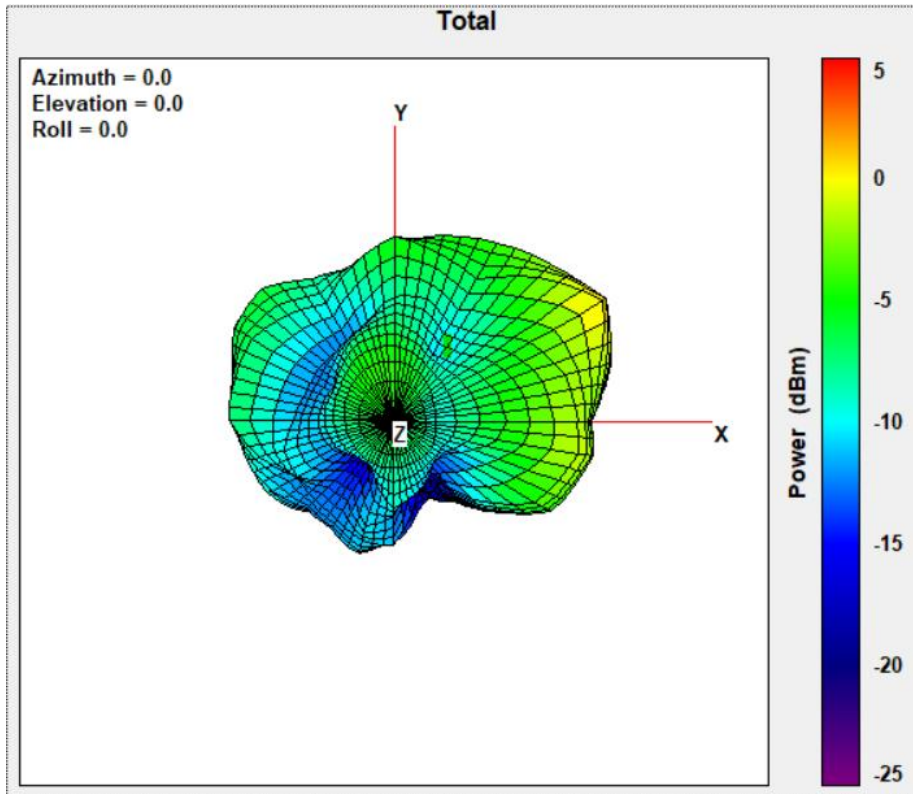
(1) 2412MHz



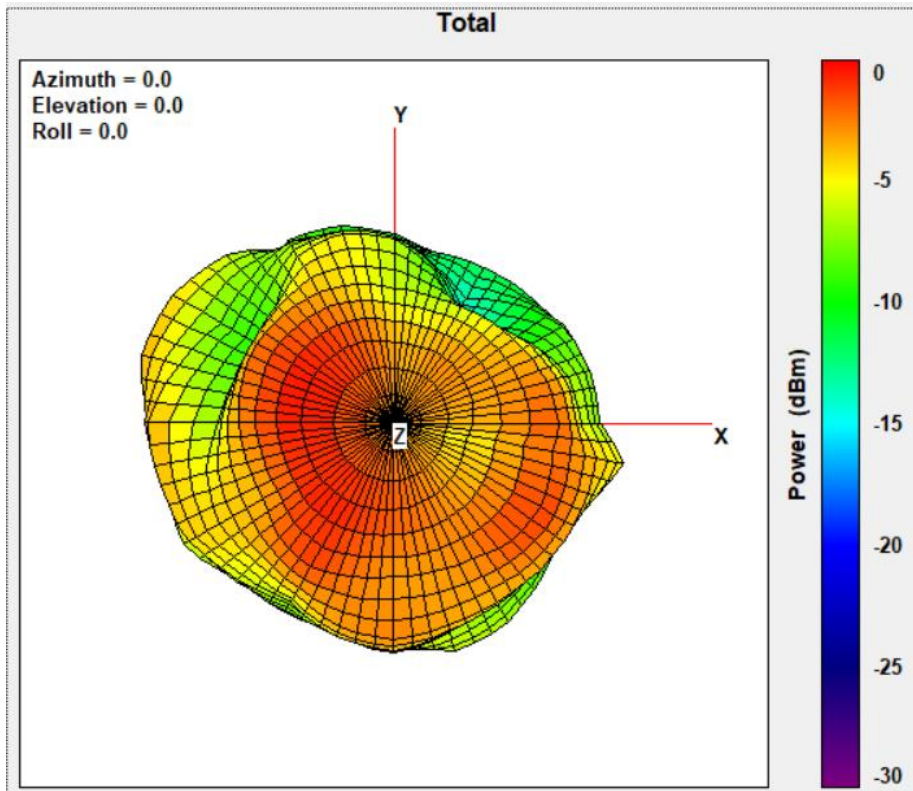
(2) 2437MHz



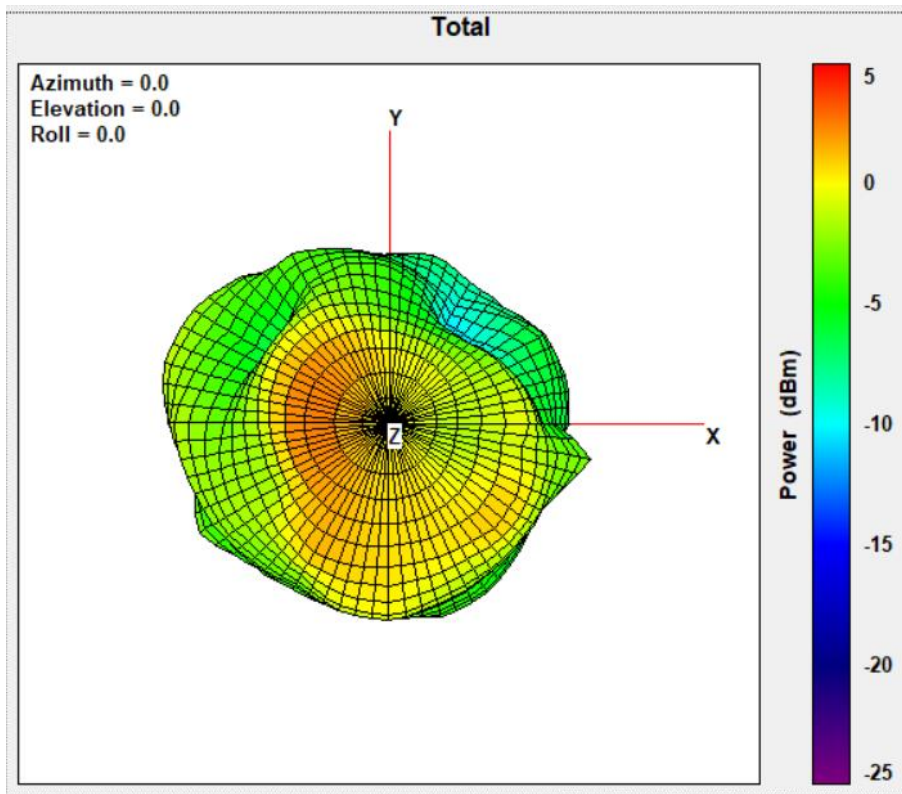
(3) 2462MHz



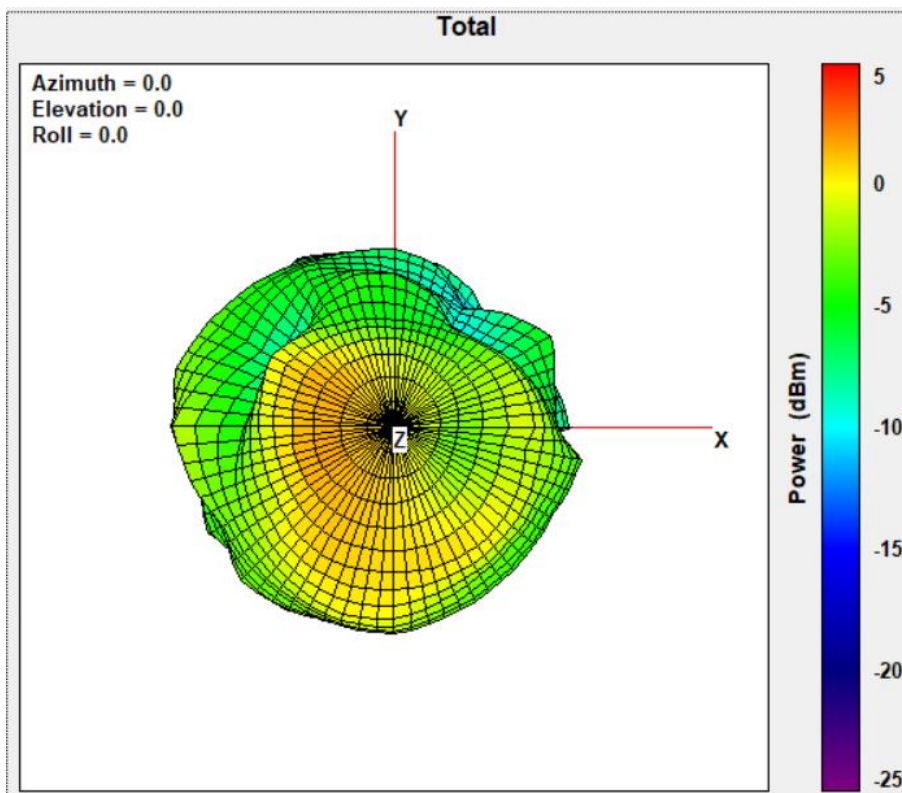
(4) 5180MHz



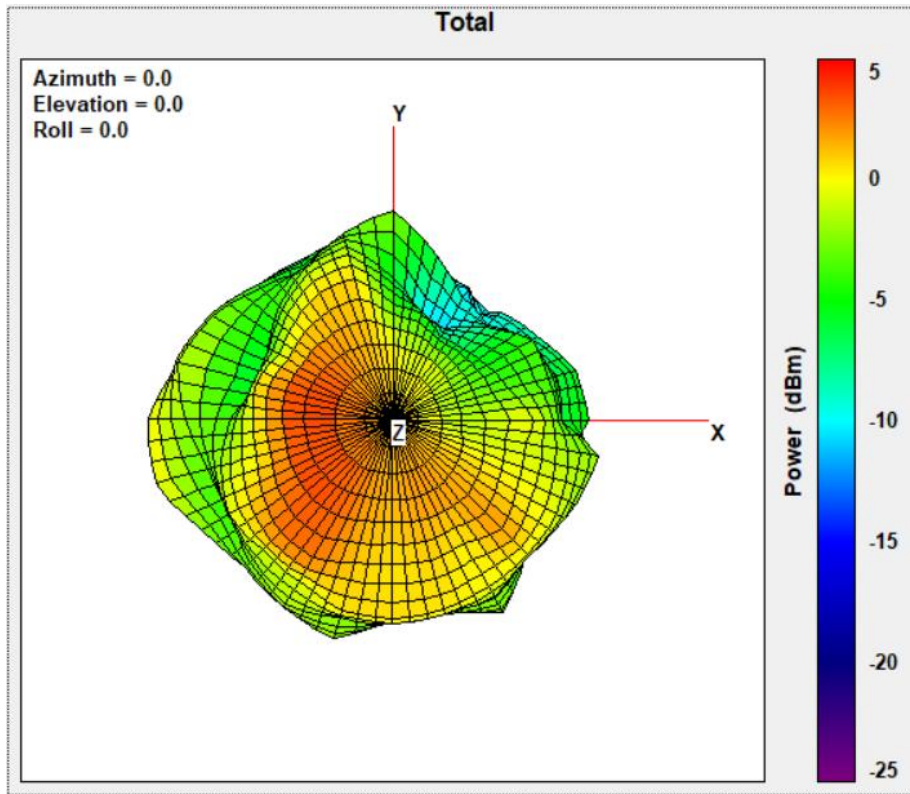
(5) 5220MHz



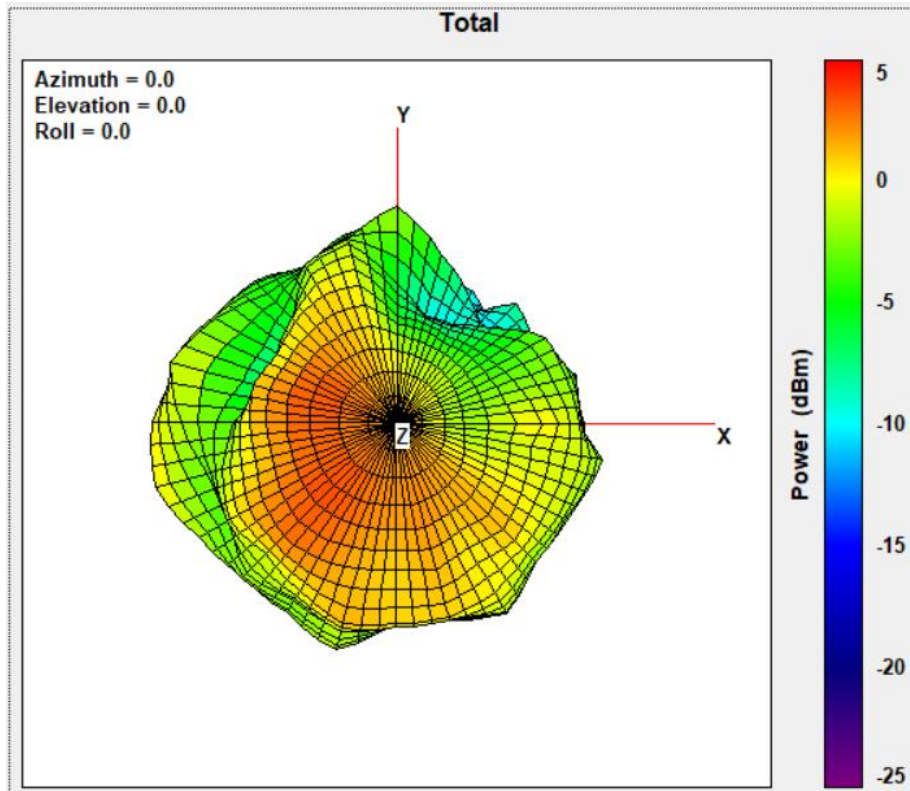
(6) 5240MHz



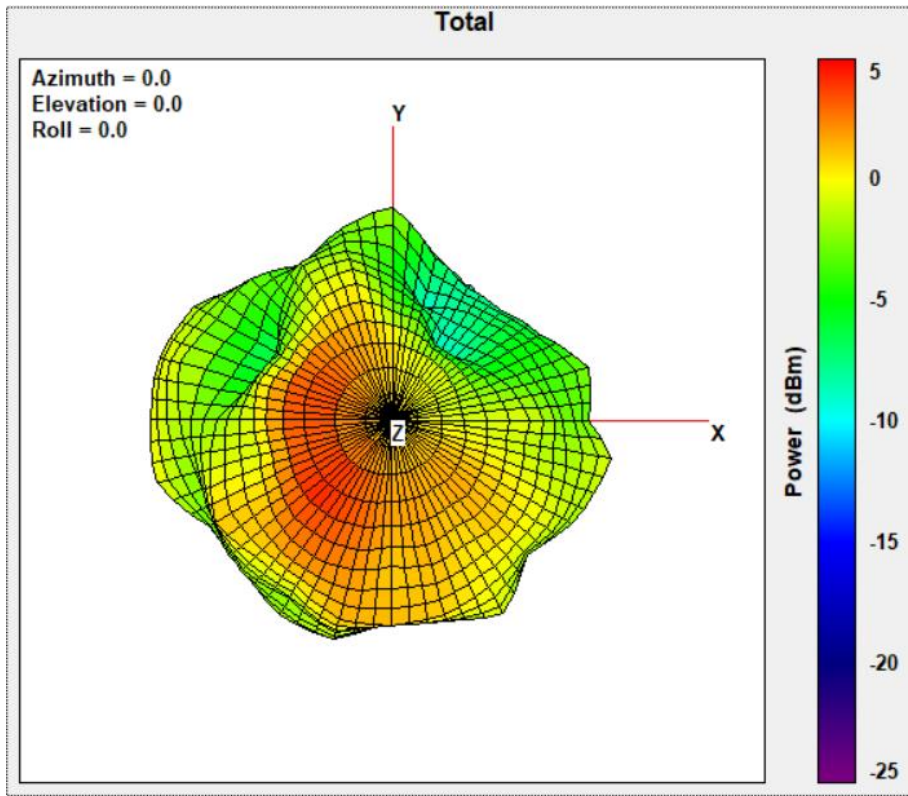
(7) 5260MHz



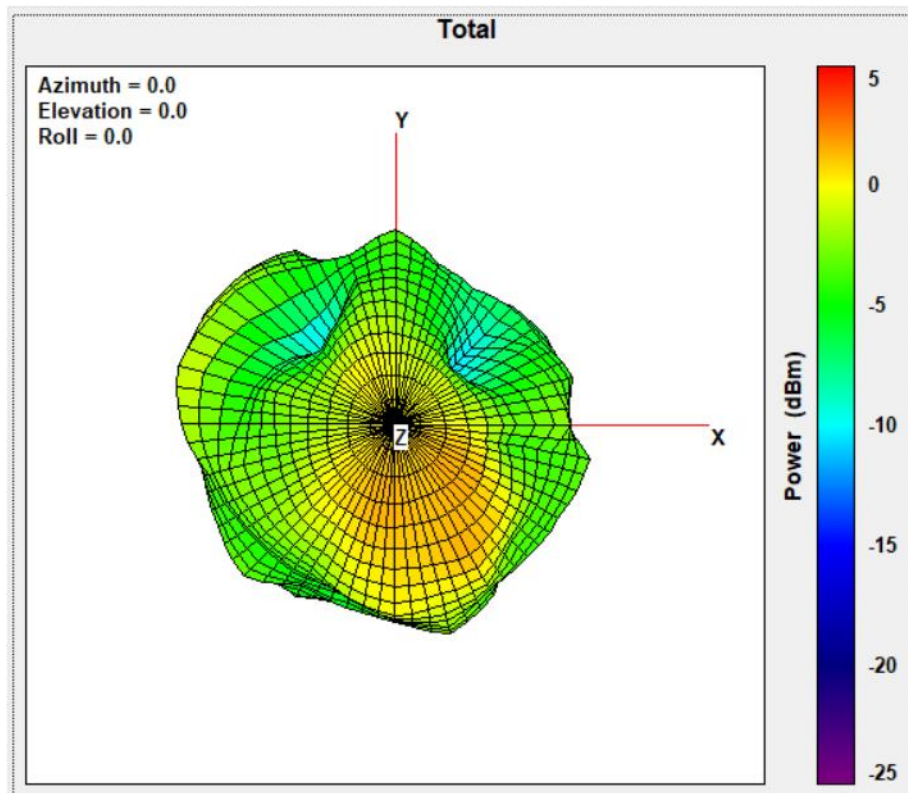
(8) 5300MHz



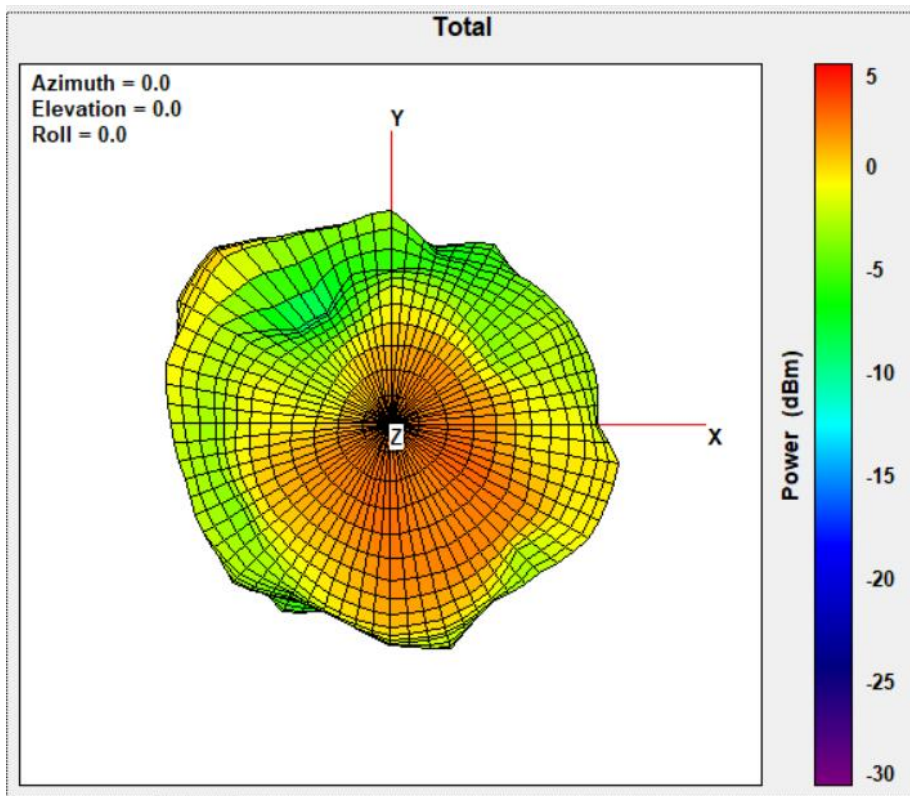
(9) 5320MHz



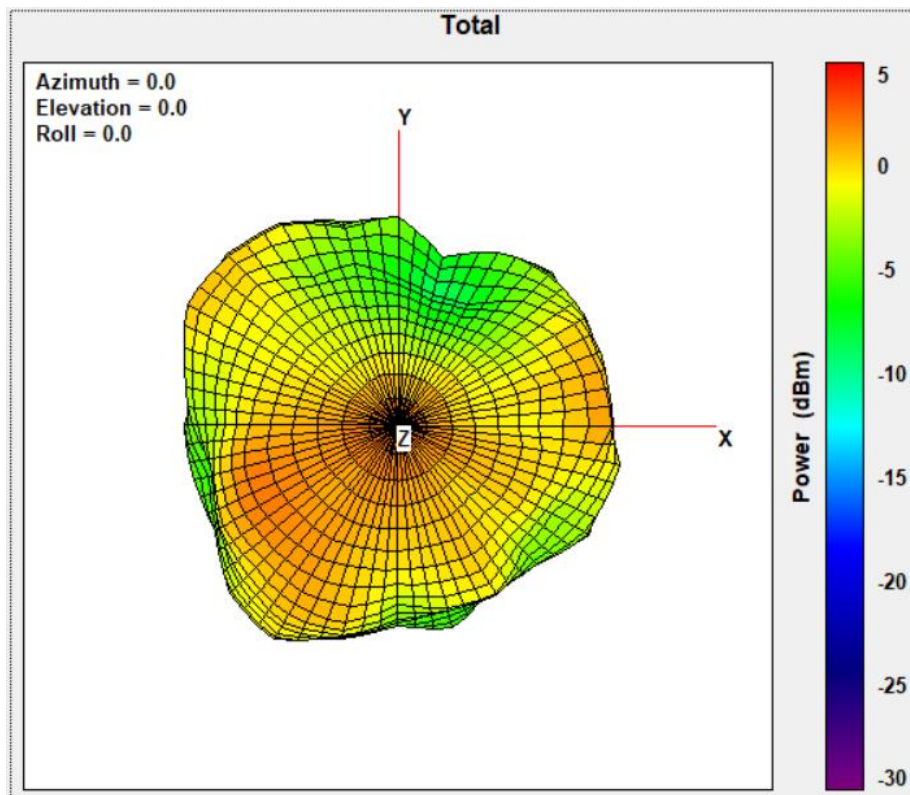
(10) 5500MHz



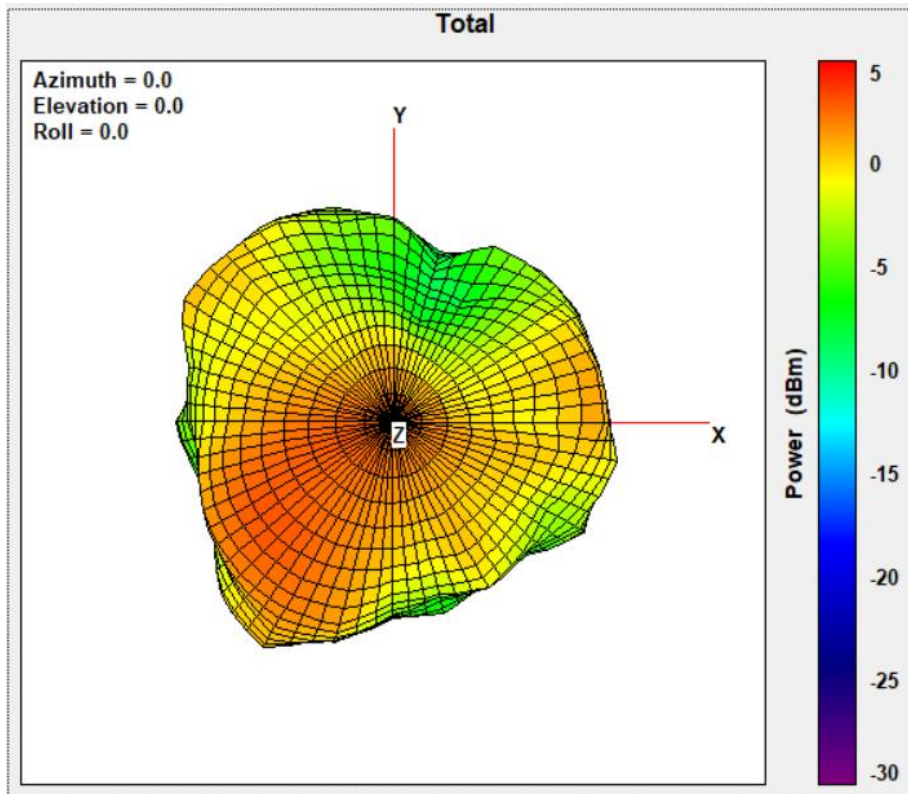
(11) 5580MHz



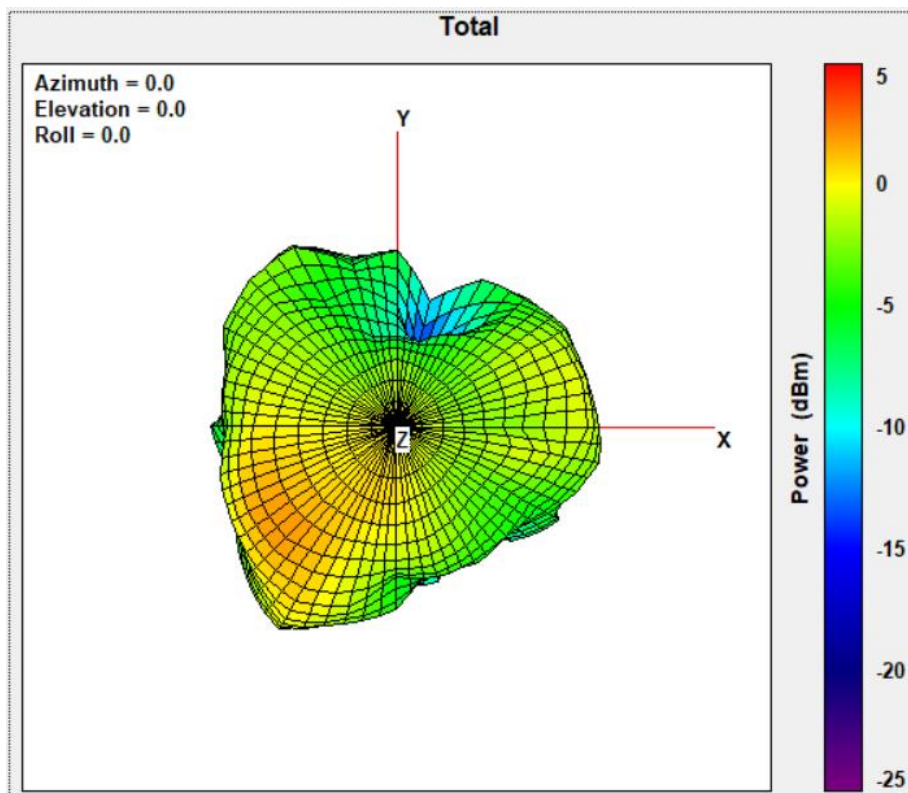
(12) 5700MHz



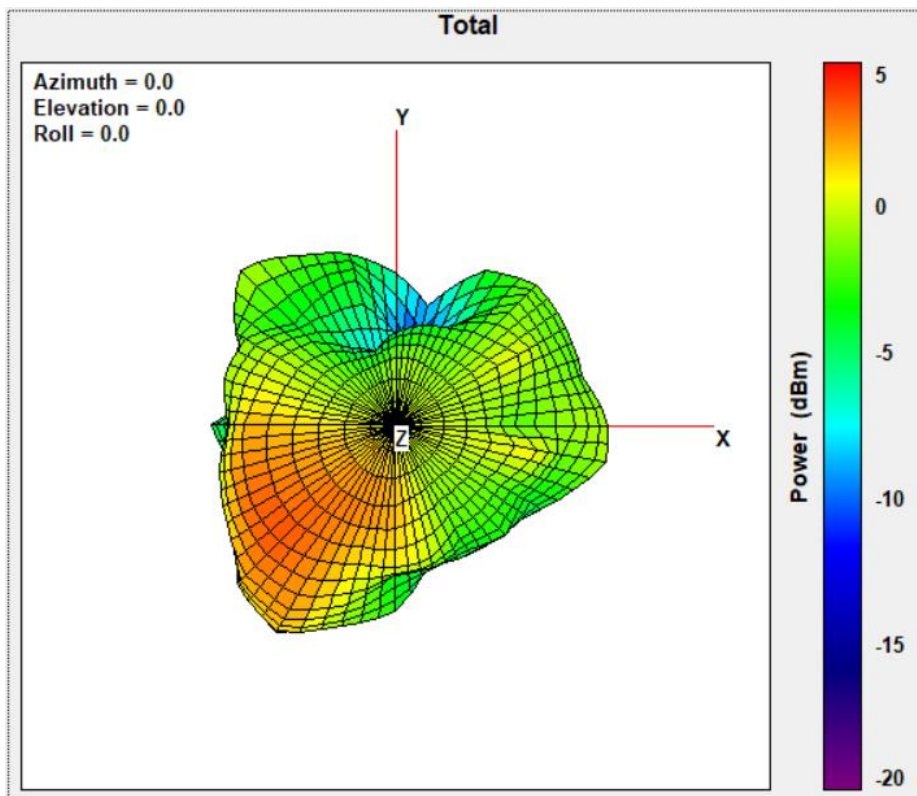
(13) 5745MHz



(14) 5785MHz



(15) 5825MHz



5. Test result

(1) 2.4GHz band

Frequency (MHz)	2412	2437	2462
Efficiency (%)	12.80	13.63	15.36
Peak Gain (dBi)	1.65	1.50	1.36

(2) 5GHz band

Frequency (MHz)	5180	5220	5240	5260	5300	5320
Efficiency (%)	16.66	28.28	26.01	33.92	34.90	36.59
Peak Gain (dBi)	-0.09	2.97	1.96	4.03	3.64	4.61

Frequency (MHz)	5500	5580	5700	5745	5785	5825
Efficiency (%)	25.19	32.77	32.47	35.91	24.41	34.00
Peak Gain (dBi)	1.80	2.97	2.58	3.15	2.28	3.74