

Hildesheim  
28 February 2020

From

Our Reference

Tel

Report

Issue

Topic A-IVI Scope 2 / 3 Internal Pictures



Hildesheim  
28 February 2020

From | Our Reference | Tel

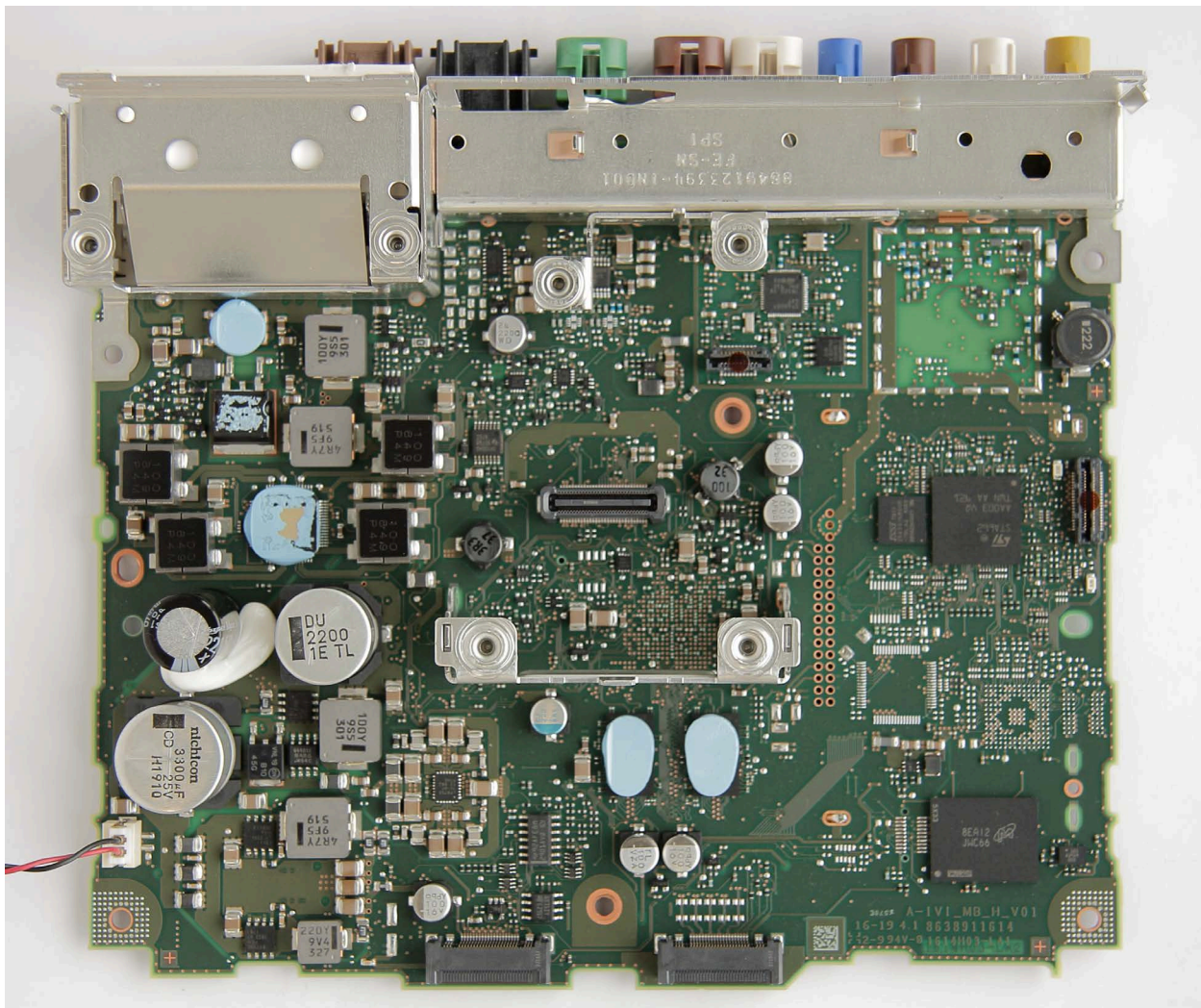
Report  
Issue  
Topic A-IVI Scope 2 / 3 Internal Pictures

## 2 Main PCB

### 2.1 Main PCB “H”

Circuit and layout name / version: A-IVI\_MB\_H\_V01

#### 2.1.1 Main PCB “H” Top side Rest of World insertion



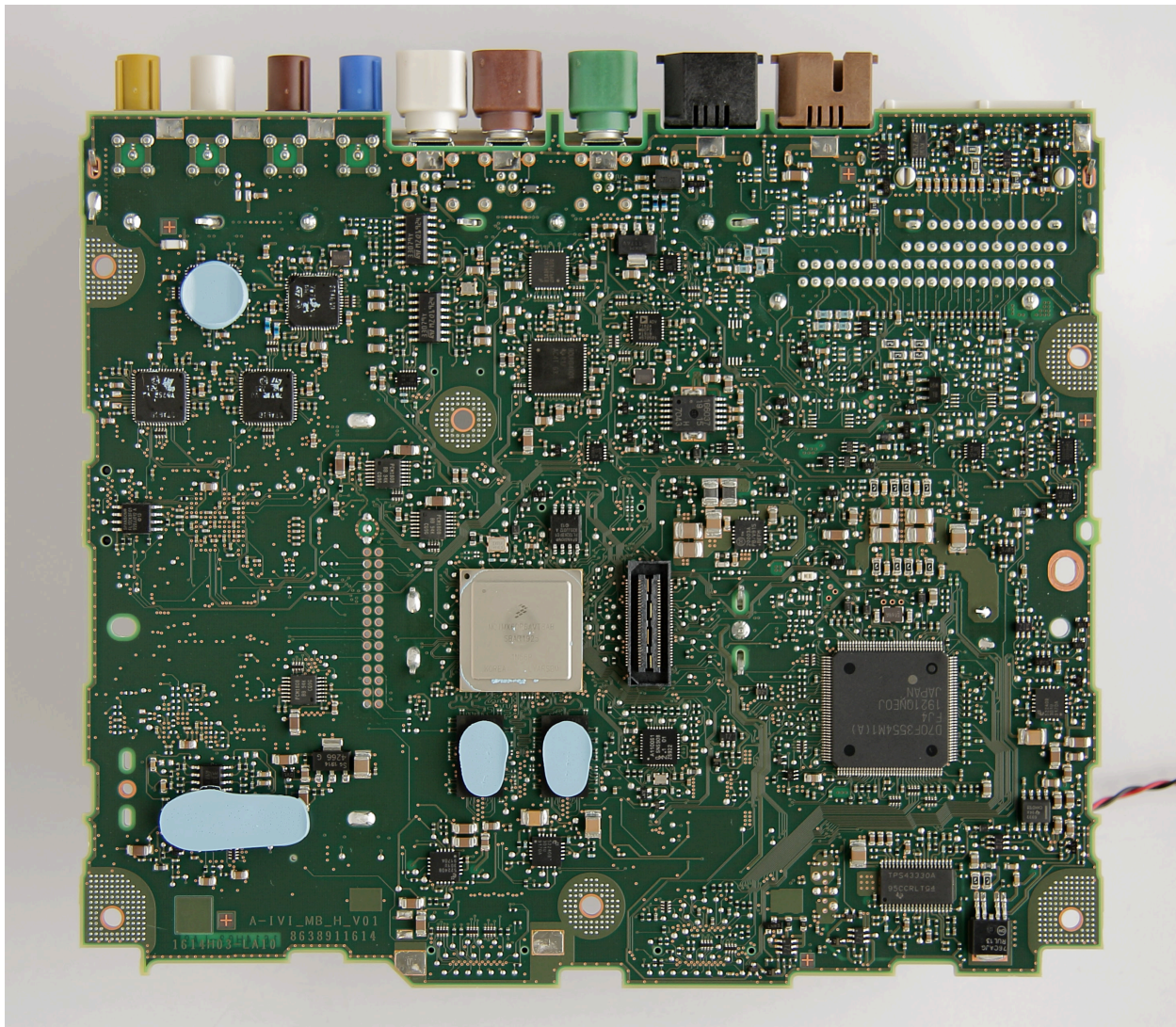


Hildesheim  
28 February 2020

From | Our Reference | Tel

Report  
Issue  
Topic A-IVI Scope 2 / 3 Internal Pictures

### 2.1.2 Main PCB “H” Bottom side Rest of World insertion

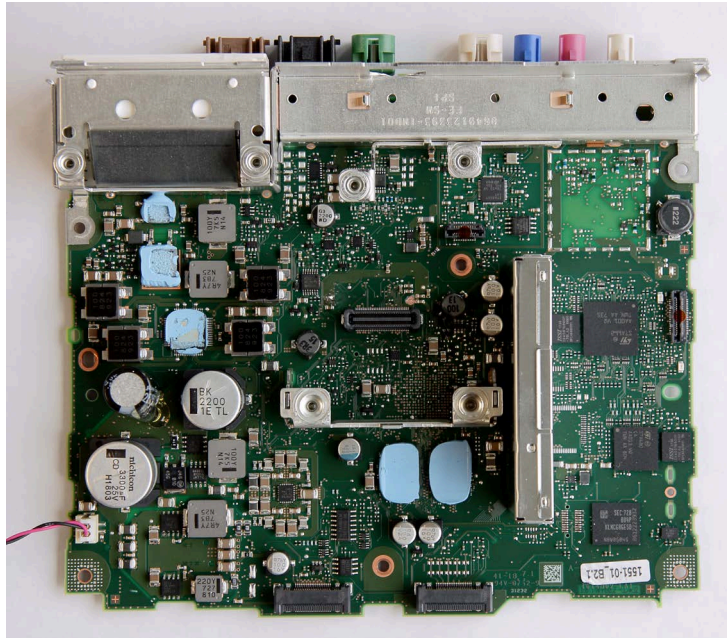


Hildesheim  
28 February 2020

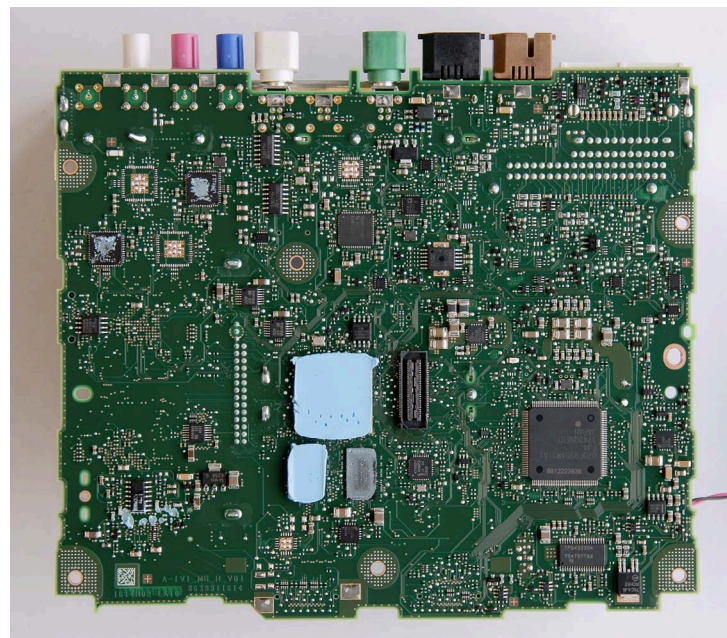
From | Our Reference | Tel

Report  
Issue  
Topic A-IVI Scope 2 / 3 Internal Pictures

### 2.1.3 Main PCB “H” Top side US insertion



### 2.1.4 Main PCB “H” Bottom side US insertion





Hildesheim  
28 February 2020

From | Our Reference | Tel

Report  
Issue  
Topic A-IVI Scope 2 / 3 Internal Pictures

### 3 XM Module (all US / CAN variants)



Hildesheim  
28 February 2020

From | Our Reference | Tel

Report  
Issue  
Topic A-IVI Scope 2 / 3 Internal Pictures

## 4 Switch PCBs

### 4.1 Switch PCB “P33A”

Circuit and layout name / version: A-IVI\_SB\_P33A\_V01

#### 4.1.1 Switch PCB “P33A” Top side

