



HOMEOLUX™

BEACON40™

---

# INSTRUCTION MANUAL

*Lighting Your Way to  
a Clearer Future*

# WELCOME

BEACON40™ is beautifully designed to enhance cognitive function and maintain brain health. It is precisely engineered to deliver light at 40Hz, mirroring the brain's healthy gamma rhythm and improving mental acuity, memory and attention.

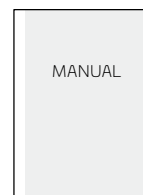
HomeoLux™ products complement your doctor-prescribed protocols. Always talk to your doctor when adding any supplement to your wellness routine.

This manual will guide you through proper setup and use.

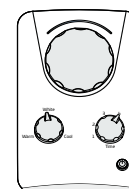
## TABLE OF CONTENTS

What's Included .....	3
Setup .....	4
Recommended Use .....	6
Additional Information .....	6
Precautions .....	7

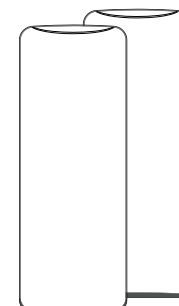
## WHAT'S INCLUDED



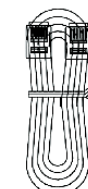
An Instruction Manual



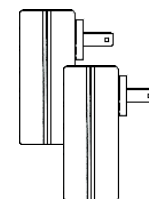
A Remote Control



2 BEACON40™ Lights



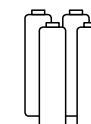
A Connecting Cable



2 Power Cords



A Plastic Screw



4 AA Batteries

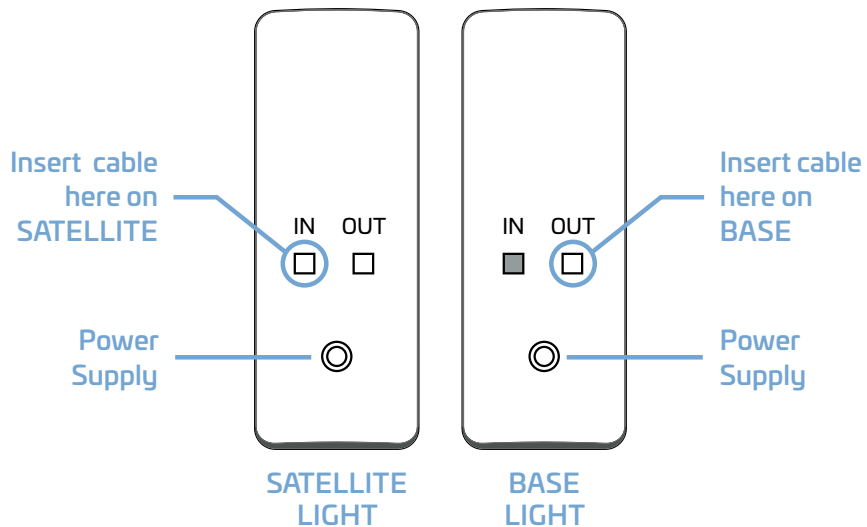
*You will need a flat-head screwdriver for battery installation.*

**BEACON40™ Surround kit** also includes:

- + 2 Additional Lights
- + 2 Additional Power Cords
- + 2 Additional Connecting Cables

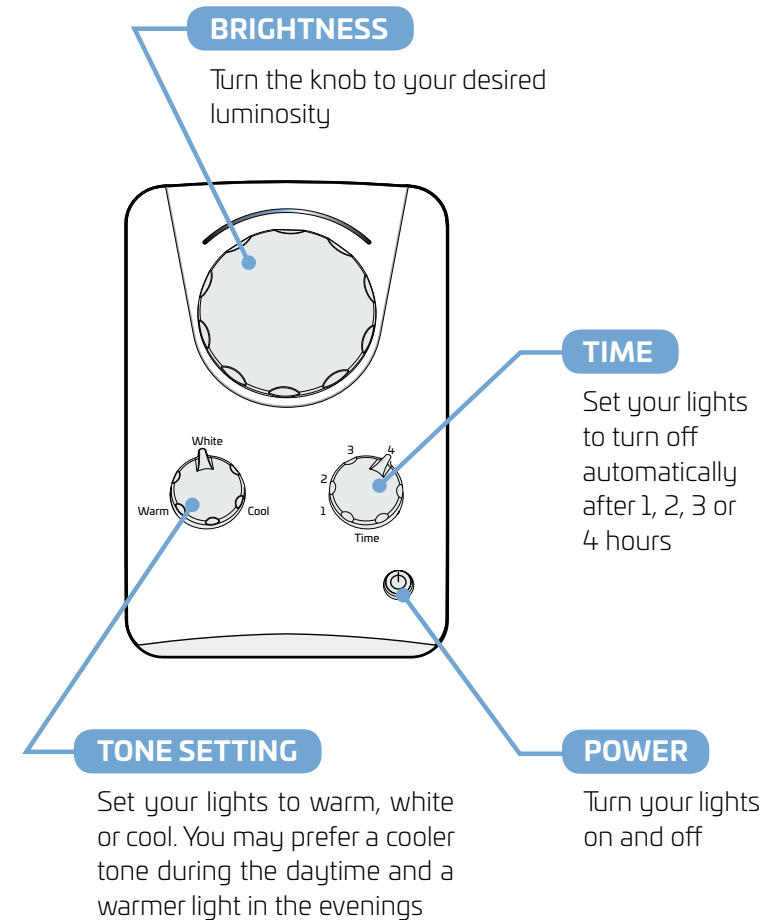
## SETUP

1. To set up your Remote Control, remove the battery cover on the bottom and place 4 AA batteries as indicated. Seal the battery pack with the plastic screw using a flat-head screwdriver. A blue indicator will illuminate when it's powered on.
2. The **BEACON40™ Personal kit** includes 2 lights: a **BASE** and a **SATELLITE**. The **BEACON40™ Surround kit** includes 2 additional lights.
3. Insert one power supply plug into the silver port at the back of each light. Connect the power supplies to a wall outlet.
4. Plug the cable connector into the open **OUT port** in the **BASE** light. Connect the other end of the cable into the **IN port** on the **SATELLITE** light. Repeat this step for the additional lights in the BEACON40™ Surround Kit.
5. Using the remote control, turn the power on. The lights will blink. The blinking means that the lights are ready to pair with the remote control. Hold the power button for 3-5 seconds until the lights flicker. Your remote is now paired with the lights.



Use the **REMOTE CONTROL** to set BEACON40™ to your preferences.

There is:



**LOW BATTERY:** Each light will flash once every five minutes to indicate a low battery. Remove and replace the batteries to resume use.

## RECOMMENDED USE

Find a comfortable setting for your lighting system.

Place each light where it will be unobstructed and in the peripheral view of the users. We recommend placement 3-12 feet from your location. Incorporate BEACON40™ into your daily habits, with routine use for one or more hours each day.

BEACON40™ was designed to fit comfortably into home and office environments. Use your lights while working, watching TV or reading.

Always consult your caregiver or doctor for best benefits.

**Multiple BEACON40™ light configurations can be set up for home, office and wellness centers.** To order, please visit [www.HomeoLux.com/shop](http://www.HomeoLux.com/shop)

## ADDITIONAL INFORMATION

For additional information including warranty and return policy, please visit [www.HomeoLux.com](http://www.HomeoLux.com) or contact us at [info@homeolux.com](mailto:info@homeolux.com).

## PRECAUTIONS

BEACON40™ is designed for use as a complement to your doctor-prescribed therapy.

This product is not a medical device. HomeoLux™ services and products are not intended to be used as a medical device. Furthermore, the services and the products are neither regulated nor approved by the U.S. Food and Drug Administration, and are not designed to detect or prevent causes of Alzheimer's disease or any other medical condition.

HomeoLux™ services and products are not a substitute for medical care or adult supervision. By using HomeoLux™ products you acknowledge, understand and agree that your use of the services and the product is entirely at your own risk.

A very small percentage of people may experience a seizure when exposed to flashing lights. Even people who have no history of seizures or epilepsy may have an undiagnosed condition that can cause these "photosensitive epileptic seizures". These seizures may have a variety of symptoms including lightheadedness, altered vision, twitching of the eyes or face, jerking or shaking of arms or legs, disorientation, confusion, or momentary loss of awareness. Seizures may also cause loss of consciousness or convulsions that can lead to injury from falling down or striking nearby objects. If you experience any of these symptoms, turn off the light immediately and consult a doctor.

According to IEC62471-1:2006-07 Ed. 1.0 photobiological safety of lamps and lamp systems, sources of optical radiation are classified into risk groups subject to their potential photobiological hazard. BEACON40™ is GROUP1 (Low Risk). No photobiological hazard under normal behavioral limitations.

HomeoLux™ product BEACON40™ device risk group is defined in IEC 62471-1:2006-07 Ed. 1.0.

Viewing the lights closer than 200mm distance should be avoided. Please follow proper installation and use recommendations to avoid related risks.

Changes or modifications not expressly approved by the manufacturer could void the user's authority to operate the equipment.

**NOTE: This equipment has been tested and found to comply with the limits for a Class B digital device, pursuant to part 15 of the FCC Rules. These limits are designed to provide reasonable protection against harmful interference in a residential installation. This equipment generates, uses and can radiate radio frequency energy and, if not installed and used in accordance with the instructions, may cause harmful interference to radio communications. However, there is no guarantee that interference will not occur in a particular installation. If this equipment does cause harmful interference to radio or television reception, which can be determined by turning the equipment off and on, the user is encouraged to try to correct the interference by one or more of the following measures:**

- Reorient or relocate the receiving antenna.
- Increase the separation between the equipment and receiver.
- Connect the equipment into an outlet on a circuit different from that to which the receiver is connected.
- Consult the dealer or an experienced radio/TV technician for help.



HOMEOLUX™

---

[www.HomeoLux.com](http://www.HomeoLux.com) | [info@homeolux.com](mailto:info@homeolux.com)