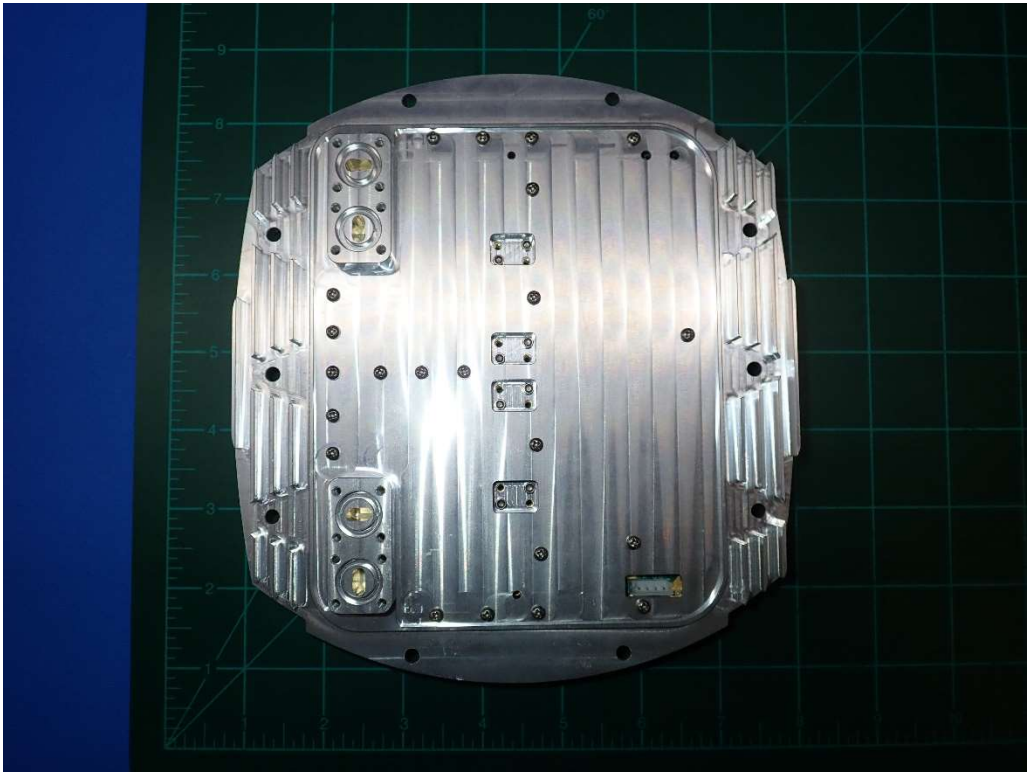
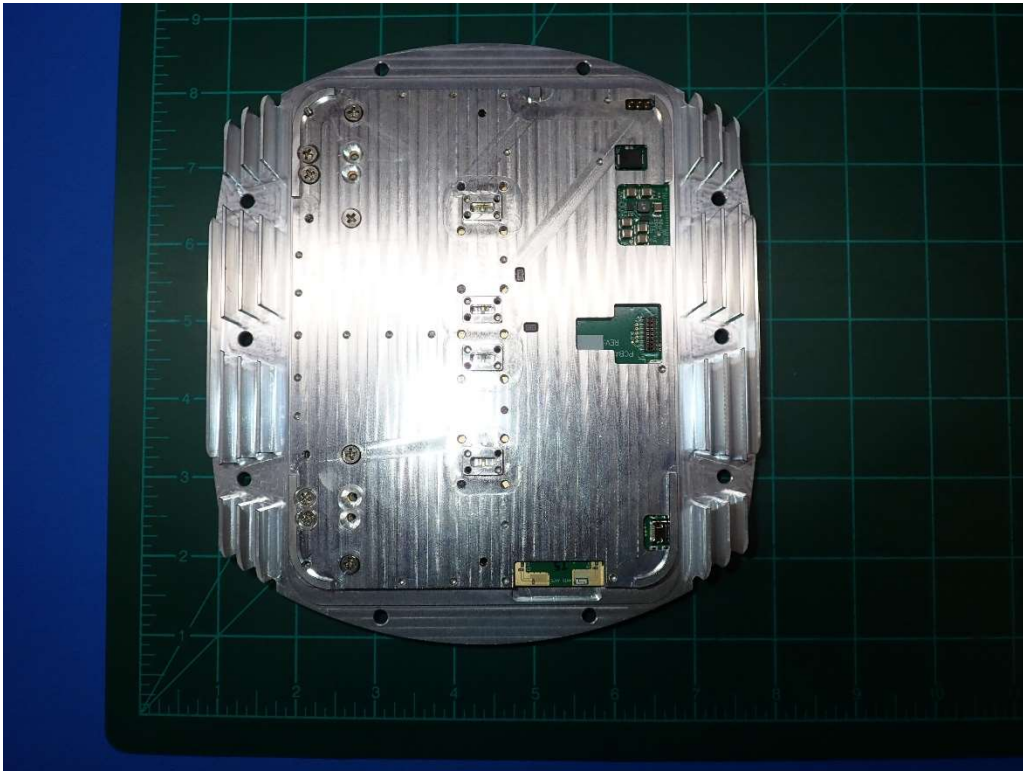


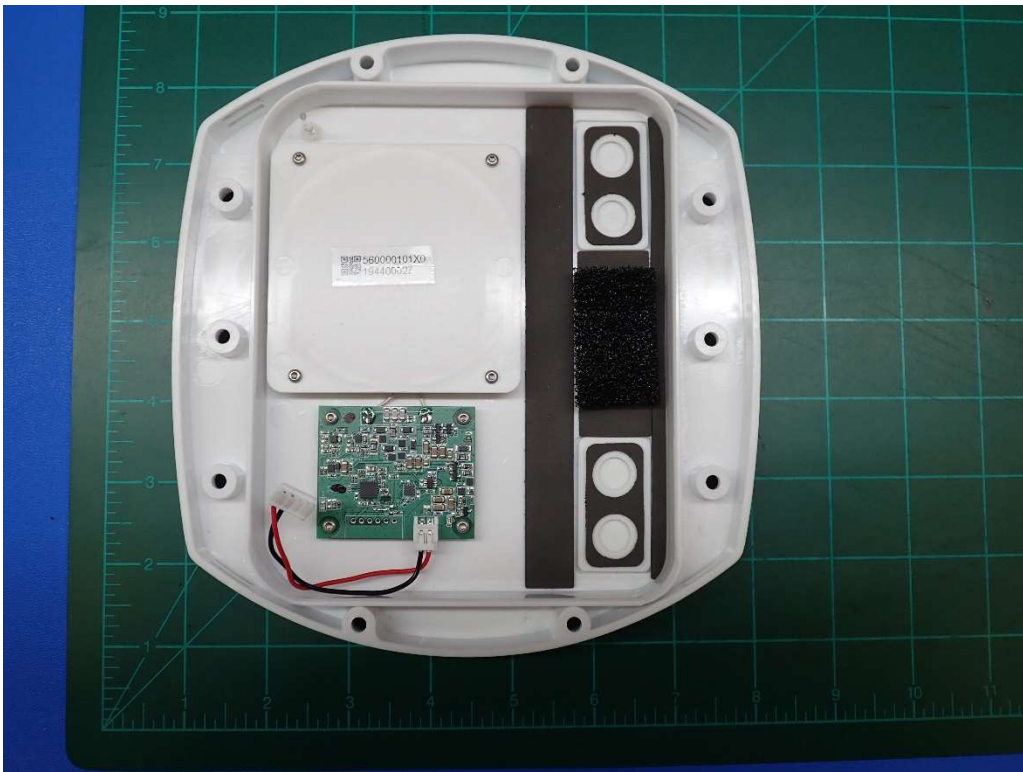
Internal Photographs
FCC ID: 2AUVU-OES3



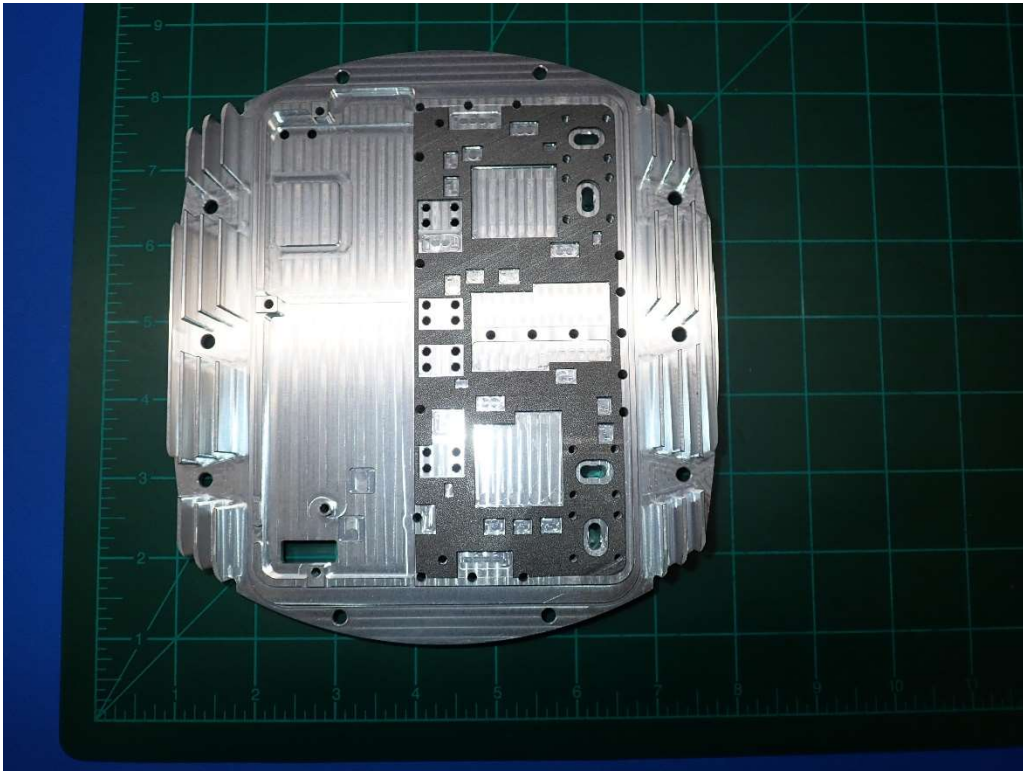
Backplate (glass facing) with BSA Installed



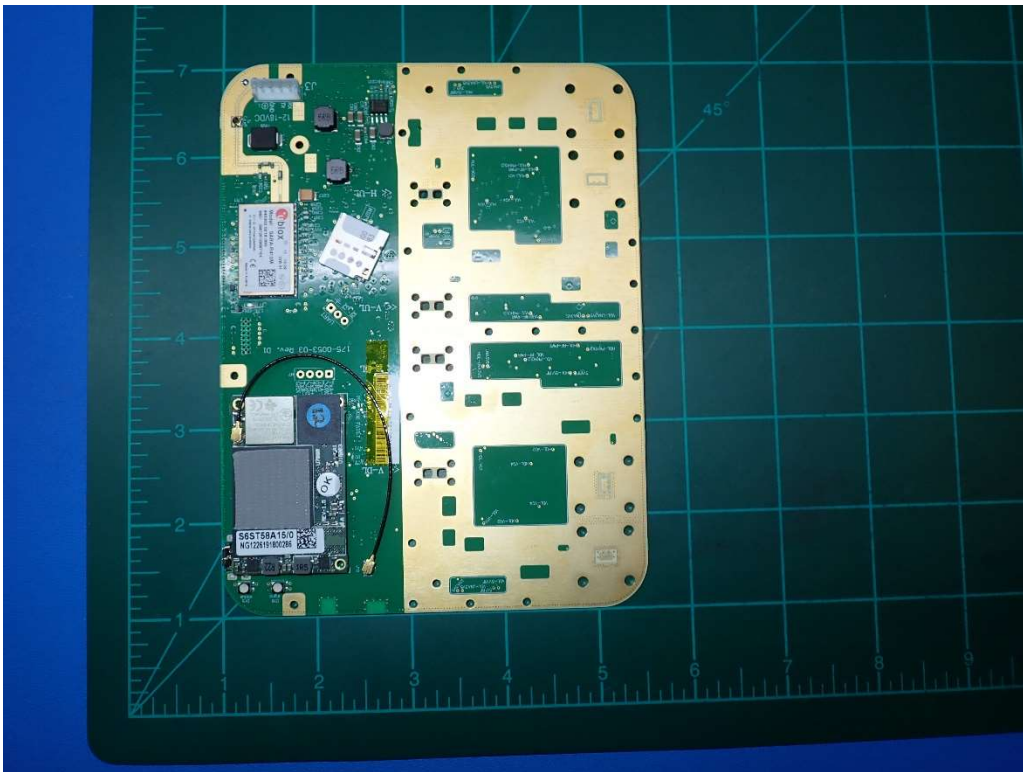
Backplate and Isolation Plate (gNB facing) with BSA installed



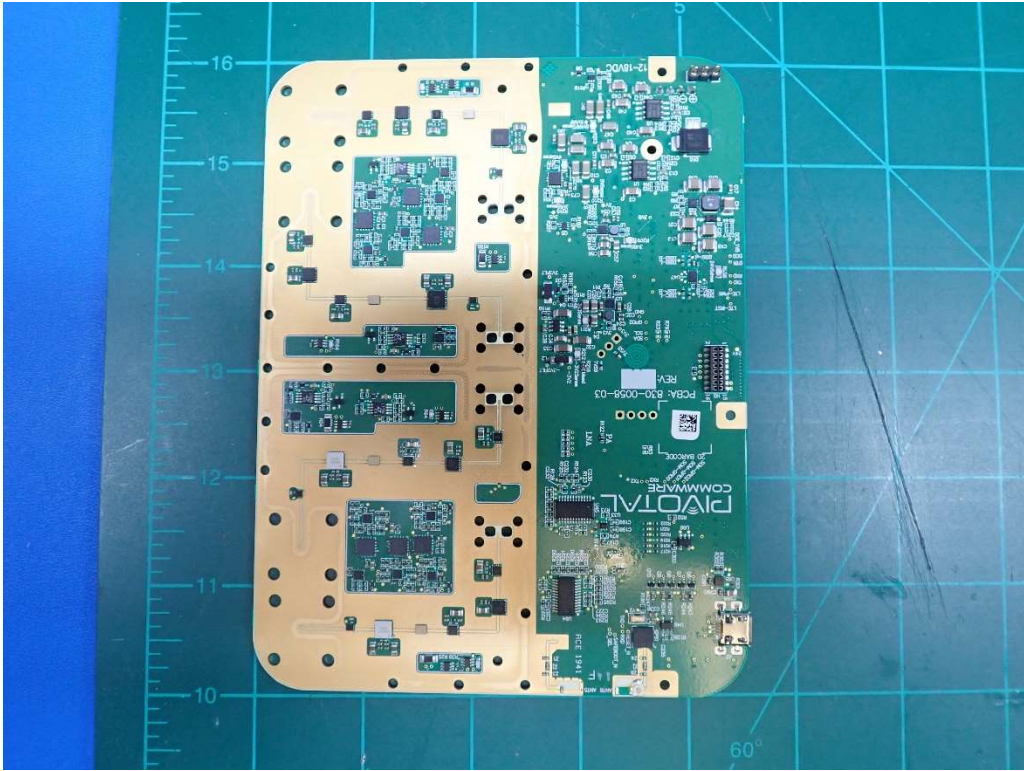
Inside of Back Cover with Rx Power and Absorber



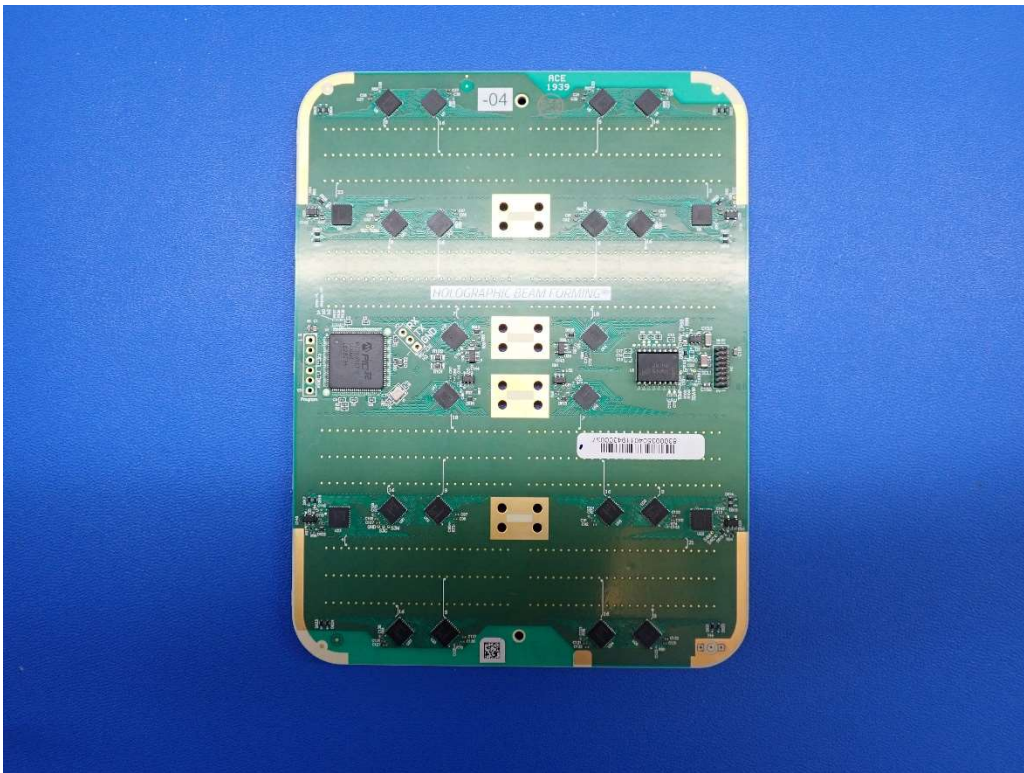
Backplate with graphite in place (gNB facing)



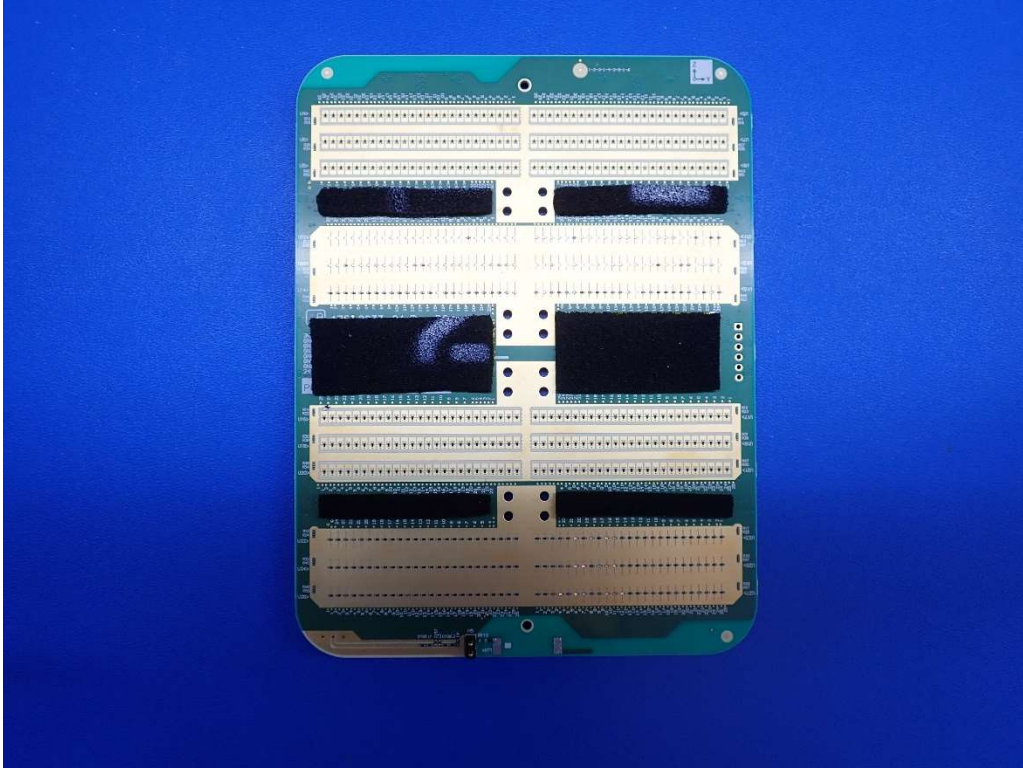
BSA (Back)



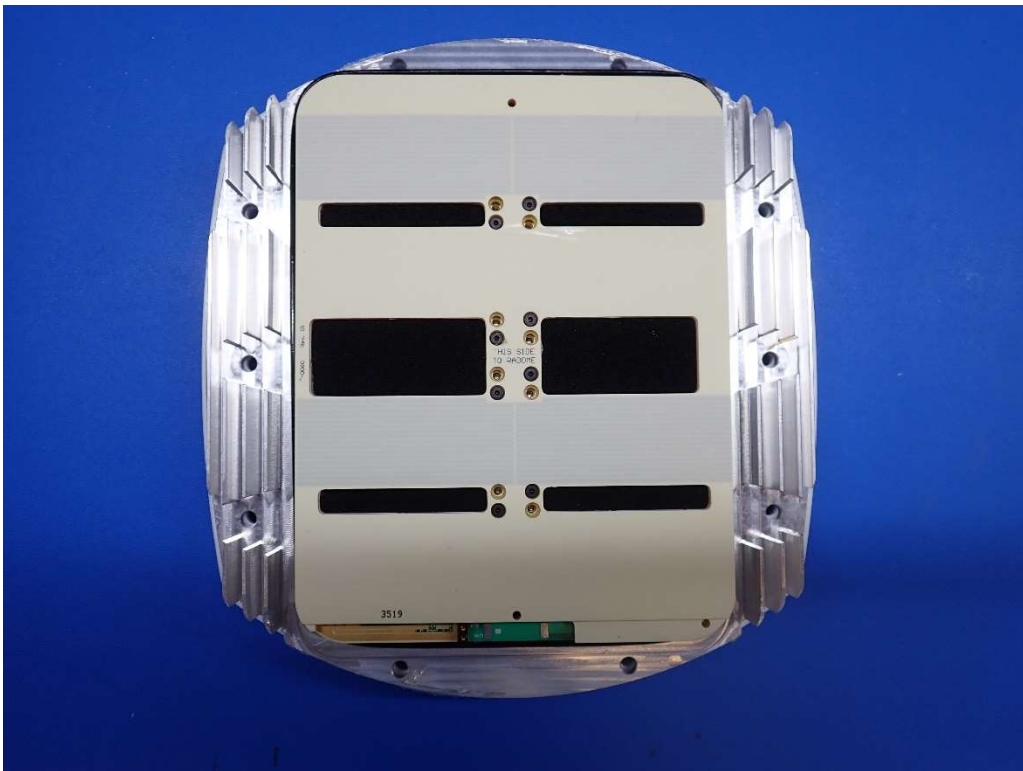
BSA (Front)



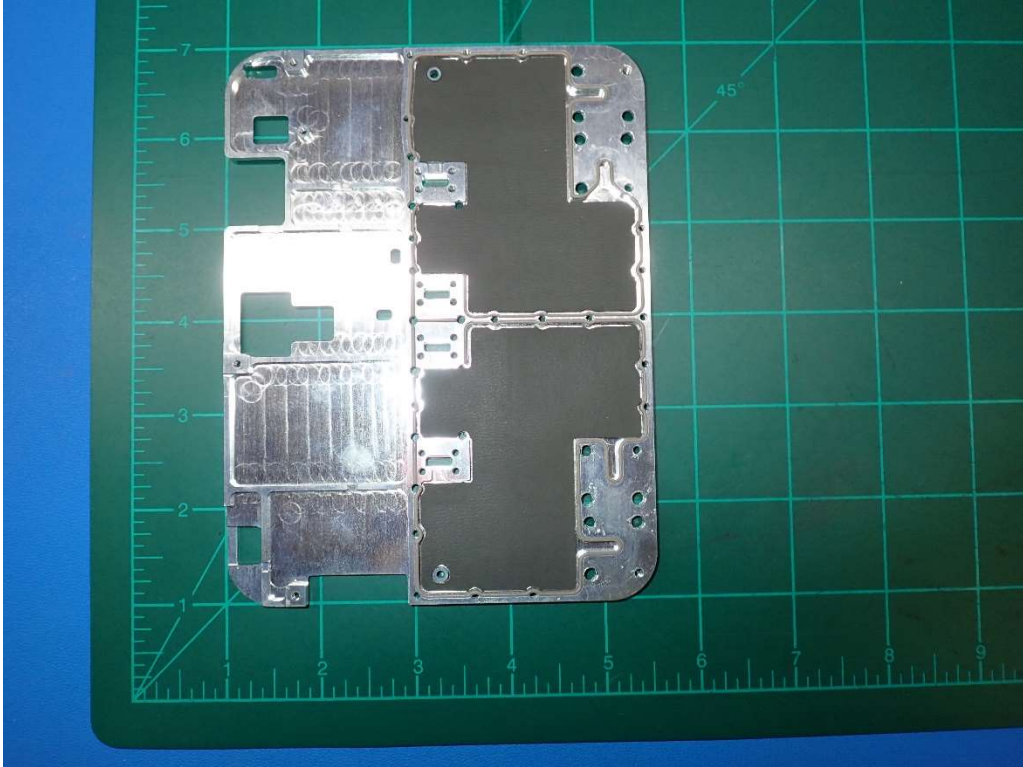
HBF Antenna (Back)



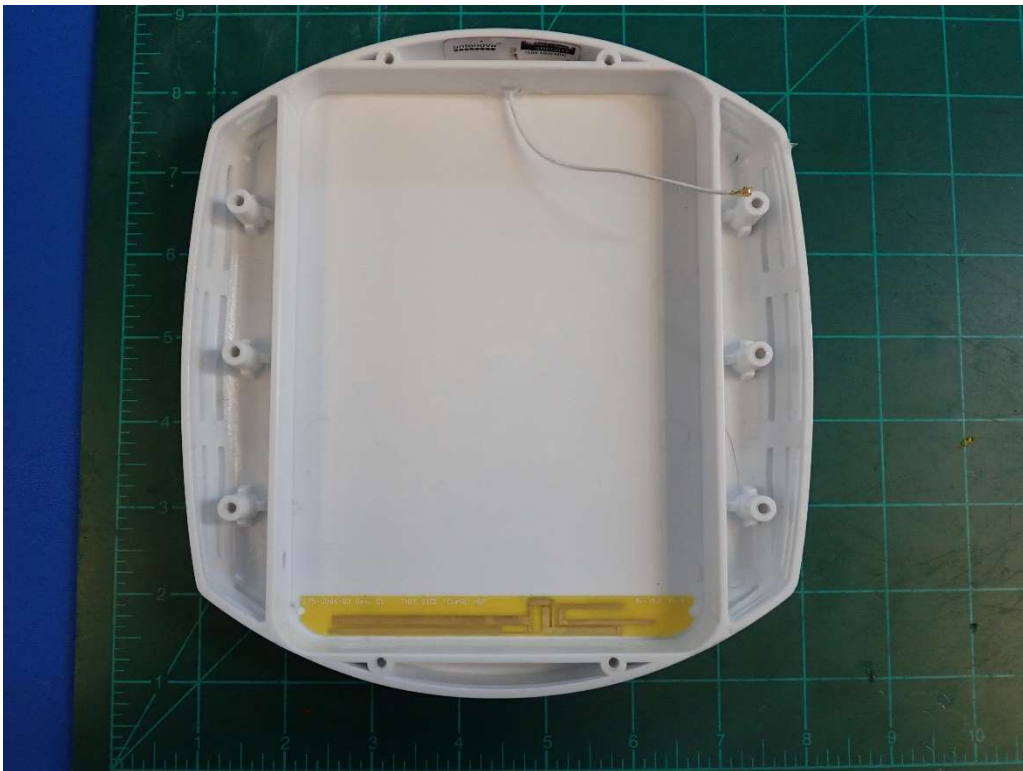
HBF Antenna (Front) with absorber



Assembled Unit with WAIM over the HBF Antenna (no Radome)



Isolation Plate and Absorber (Installed over the BSA)



Radome (gNB facing) with GPS (top) and LTE (bottom) Antennas