

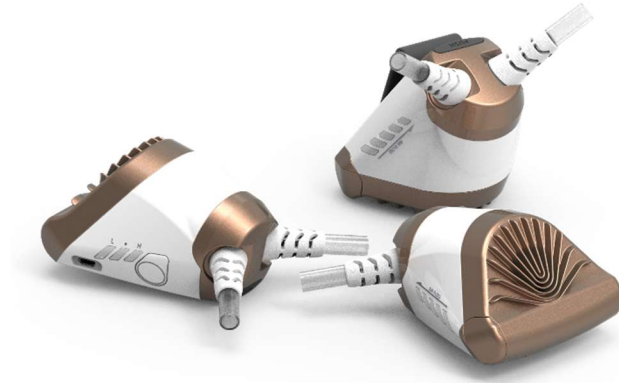
# Product User Guide

## Contents

1. About the product
2. Product specifications
3. product composition
4. Product features
5. Name of each part
6. Action
  - 6 -1. Unit behavior
  - 6 -2. Wireless connection
7. How to replace the battery
8. FCC Warning Statement

## 1. About the product

This product is a portable air purifier that can be used by individuals . The product consists of the main unit, air line, mask (airdome), and neckband. The main unit includes a fan, filter, control panel and battery. The fan is rotated to suck in external harmful air and the air is purified through the filter . Purified air travels through the air line to the airdome , allowing the user to breathe the purified air. The product can one button control and wireless control. The wireless communication frequency uses the 2.4 GHz band. Wireless IC And the processor is uart communication and 115200bps to transmit / receive data. The power source is Lithium-ion 18650 battery (IEC62133) and can be charged using an external charger.

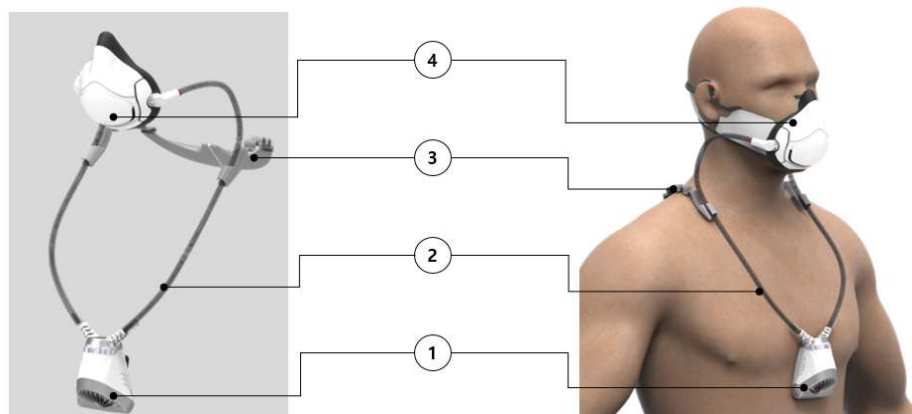


Product main body picture

## 2. Product specifications

Item		specifications	Remarks
Airdome part (mask part)	Size	107(mm) × 124(mm) × 41(mm)	
	Weight	57.5g	
main body (air purification part)	Size	83(mm) × 92(mm) × 68(mm)	
	Weight	139.5g	Battery included
Battery spec		Lithium ion / 18650 / 3.7V / 3500mAh	KC62133 Certification
Charge spec		5V / 1,500mAh	5pin micro B type usb
Power consumption		Max 2W	
Charge time:		3hours30min ~ 4hours	
Working time		Min 5 hours ~ Max 9 hours	
Storage and operating temperature		-20℃ ~ 60℃	
Filter life		8 hours per day 30 days usage	Depends on usage environment
particulate dust blocked ( trapped ) ratio		99%(PM2.5)	
interface		Long key: power on / off Short key: 5 levels air volume control App support	
Supply flow rate		Min 8L/min ~ Max 16L/min	

### 3. product composition



- ① Main body : consists of a motor, a fan, a battery, a display, control part, filter part.
- ② air line : Induces purified air from the main body to the airdome part, and the connection with the airdome part is composed of magnet .
- ③ neck band : Induces comfort when worn for a long time with stable fit and weight distribution and prevents product shaking.
- ④ airdome part : delivers the purified air guided through the air line to the user's respirator.

### 4. Product features

#### 4-1. **One button control**

- The product can be turned on and off and the air volume can be adjusted using the power button .

#### 4-2. **Wireless control**

- The product can wirelessly connect with smart devices. You can control the product ON / OFF and air volume with the app.

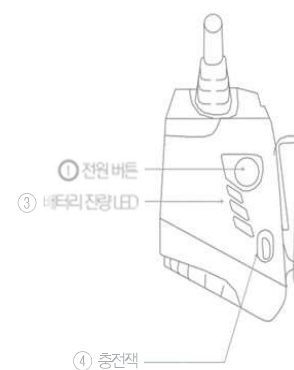
## 5. Name of each part



## 6. Action

### 6-1. Unit behavior

NO	Order of action
1	<p>Power on</p> <ul style="list-style-type: none"> <li>- Press and hold the power button (2 seconds or more) . (The unit enters pairing standby mode with a “ beep ” sound .</li> <li>- Press the switch shortly (less than 2 seconds) or connect the app to operate the unit.</li> </ul>
2	<p>Adjusting the air volume</p> <ul style="list-style-type: none"> <li>- Press the power button briefly to adjust the air volume. (Every press makes a "beep")</li> <li>- air volume control pattern : step1 ▶ step2 ▶ step3 ▶ step4 ▶ step5 ▶ step4 ▶ step3 ▶ step2 ▶ step1</li> <li>- The air volume can be adjusted through the app .</li> </ul>
3	<p>Power off</p> <ul style="list-style-type: none"> <li>- Press and hold down the power button . (The unit turns off with a “ beep ” sound.).</li> </ul>
4	<p>Charging</p> <ul style="list-style-type: none"> <li>- The airdome can be charged using a micro usb. ( Shows charge status and full charge)</li> <li>- If the battery is discharged while the unit is in use, the remaining battery level display flashes red. At the same time, the device turns off after 3 alerts.</li> </ul>



## 6 -2. Smart device wireless connection method

- 1) Activate the Bluetooth function of the smart device.
- 2) Press and hold the power button on the product ( at least 2 seconds ) .
- 3) The product enters pairing standby mode and battery level display one step green LED flashes .
- 4) Start the app to register your username .
- 5) When pairing is complete, the remaining battery level display one step LED will light up in green .

## 7. How to replace the battery



## 8. FCC Warning Statement

This device complies with part 15 of the FCC Rules. Operation is subject to the following two conditions:

- (1) this device may not cause harmful interference.
  - (2) this device must accept any interference received, including interference that may cause undesired operation.
- Any changes or modifications (including the antennas) to this device that are not expressly approved by the manufacturer may void the user's authority to operate the equipment.

## 9. FCC Radiation Exposure Statement

**This equipment complies with FCC Radiation exposure limits set forth for an uncontrolled environment.**

**This device and its antenna must not be co-located or operating in conjunction with any other antenna or transmitter.**

**This equipment should be installed and operated with a minimum distance of 20cm between the radiator and your body.**