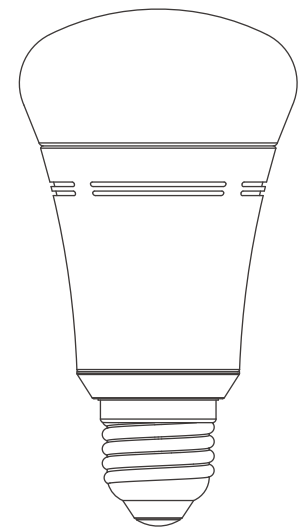
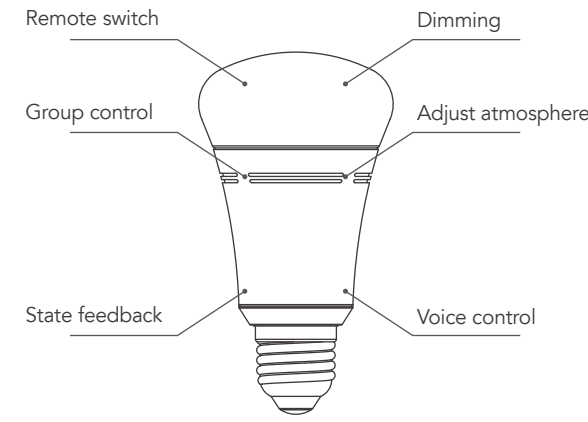


SMART LED LIGHT BULB INSTRUCTION GUIDE



Product Introduction

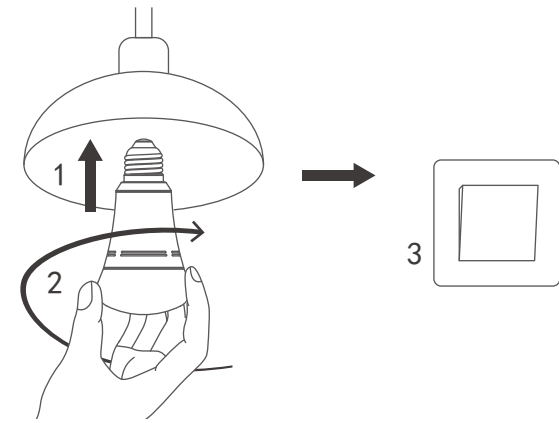


Specification

Name	Smart LED Light Bulb
Color	White light + colorful
System Support	Android, iOS
Power	10W
Working environment	Home, office
Characteristics	Free toning, Remote control
Input parameters	100-250V AC, 50-60Hz
Material	PC+ABS
Size	62x62x114mm

Install the light bulb

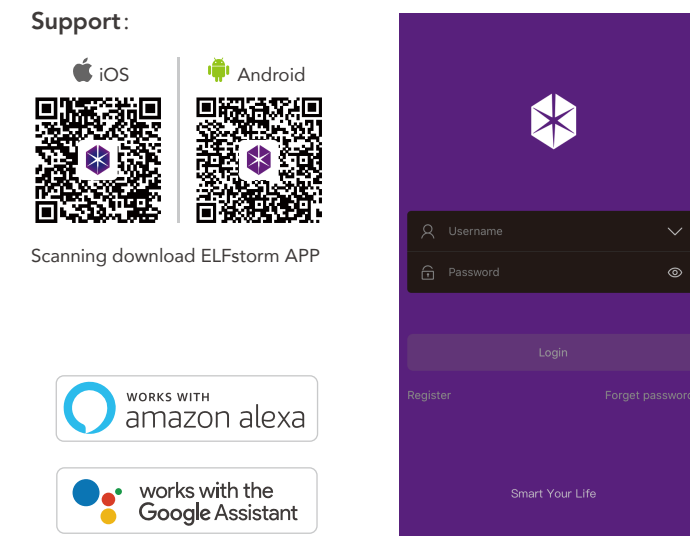
Install the bulb as shown in the picture and turn on the power switch.



- Note:**
1. When installing, removing or inspecting the lamp. Please make sure the power is off.
 2. Do not use fixtures to be dimmed to avoid damaging the product.
 3. Do not use in damp environments.
 4. Not recommended for use in narrow sealed barrel shades to avoid signal or heat dissipation problems.

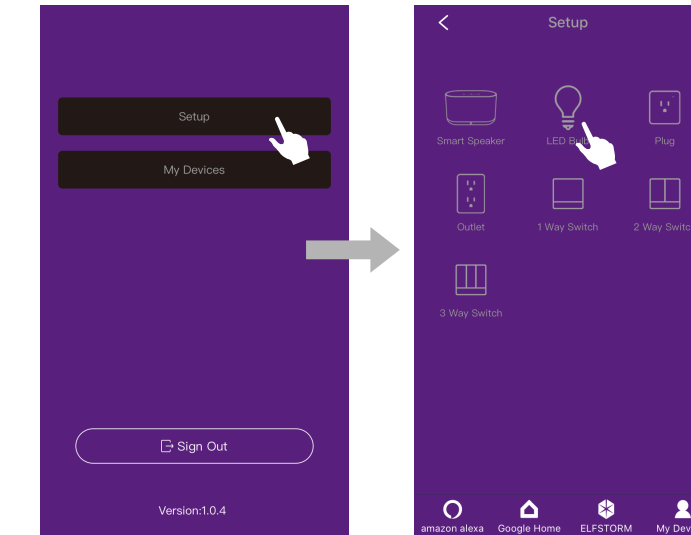
Mobile APP download

1. Scan your QR code with your phone, Or in the APP store, application market;
2. Search for "ELFstorm APP". Download and install;
3. Sign up and log in to the "ELFstorm APP".



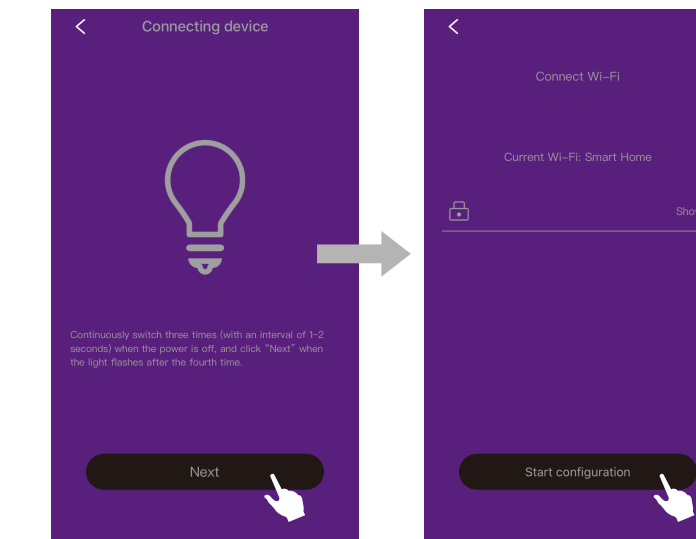
Pairing operation

4. Click "Setup" after entering the APP.
5. Select product category "LED Bulb" and click to enter its interface.



Pairing operation

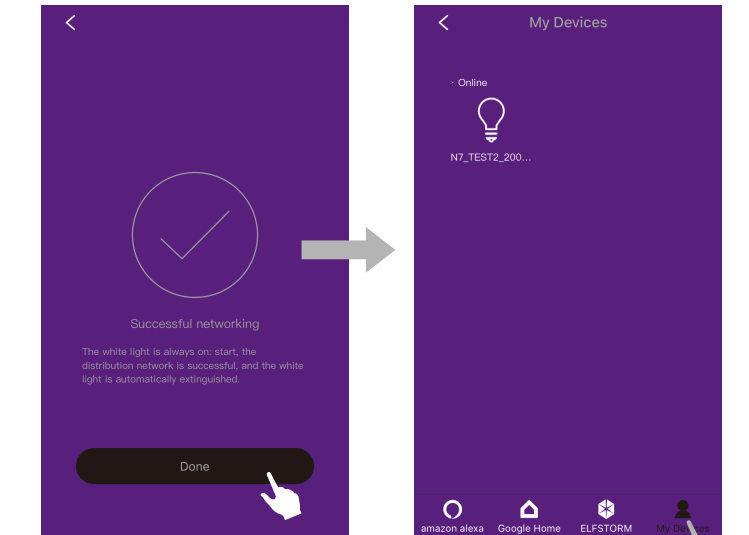
6. Connect the LED bulb to the power supply, and power the product/power off for 3 cycles (when the light is on, the power will be quickly cut off and then power will be restored). The light will flash quickly, indicating that the LED bulb has entered the distribution network state.
7. Return to the mobile APP interface and click "Next" to enter the interface of connecting to Wi-Fi.
8. Enter the Wi-Fi password for the connection and click "Start configuration".



Note: the product can only be used after connecting to 2.4g network. The 2.4g network can be set on the router.

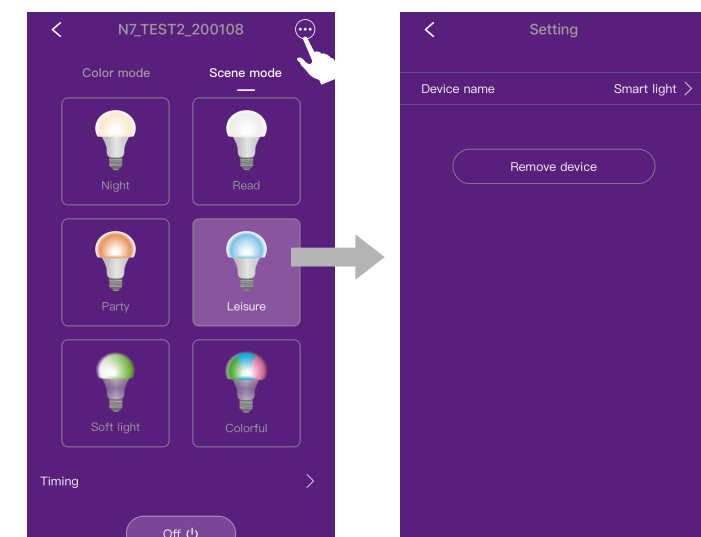
Pairing operation

8. Display the device network connection is successful and click "Done" to enter the main page.
9. Click "My Devices" on the main page to enter, and the currently connected products are displayed on the interface.



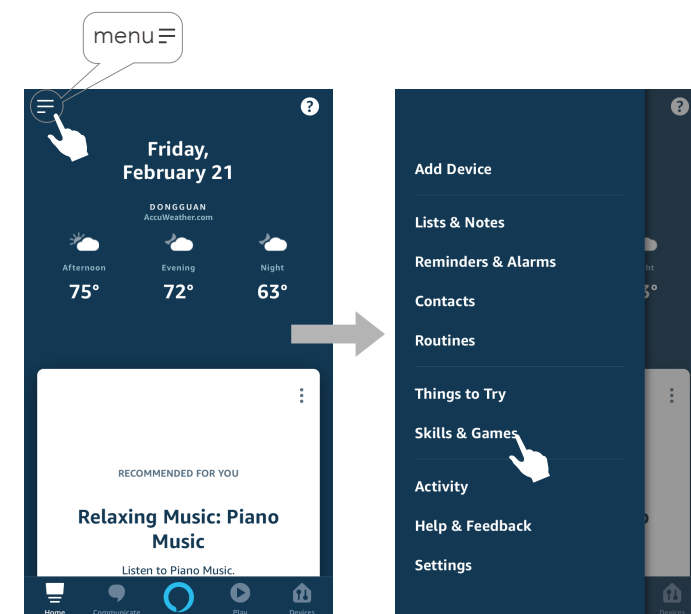
Pairing operation

10. Click the connected product icon, and you can control the corresponding functions of the product after entering.
11. In order to facilitate voice search of products and voice control in amazon APP, first modify the product name (for example: smart light), click the icon "⊞" in the upper right corner of the product main interface. Enter the modify screen.



Voice interaction skill authorization

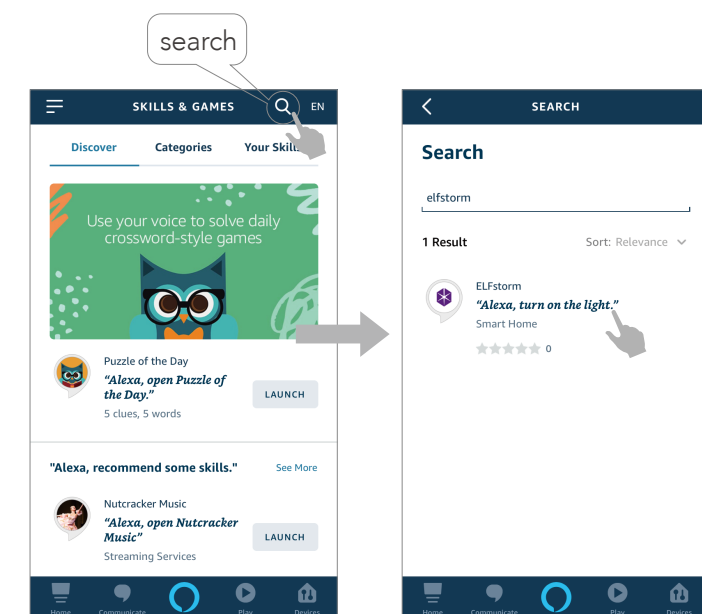
1. Download Amazon Alex APP, register and log in. Enter Amazon Alex APP and click the menu button in the upper left corner.
2. Click "skills & Games".



Note: in order to realize voice control, smart speaker must be equipped and voice authorization must be carried out:

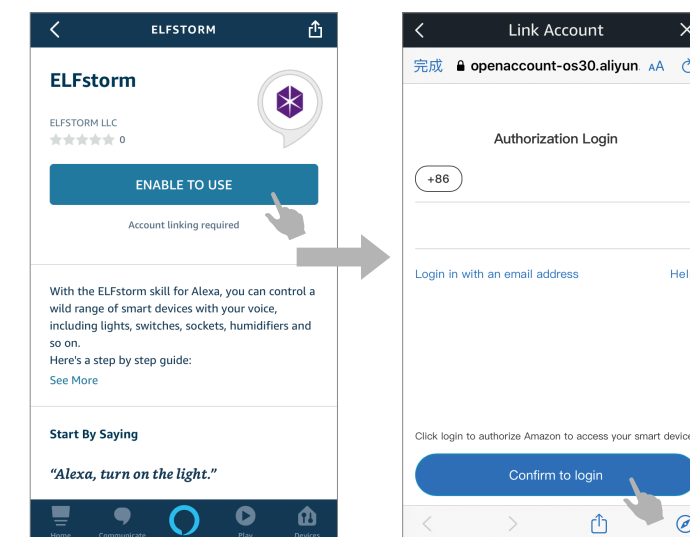
Voice interaction skill authorization

3. Click the search icon "🔍".
4. Input the name of the skill (such as ELFSTORM), search for ELFSTORM, and click "ELFSTORM".



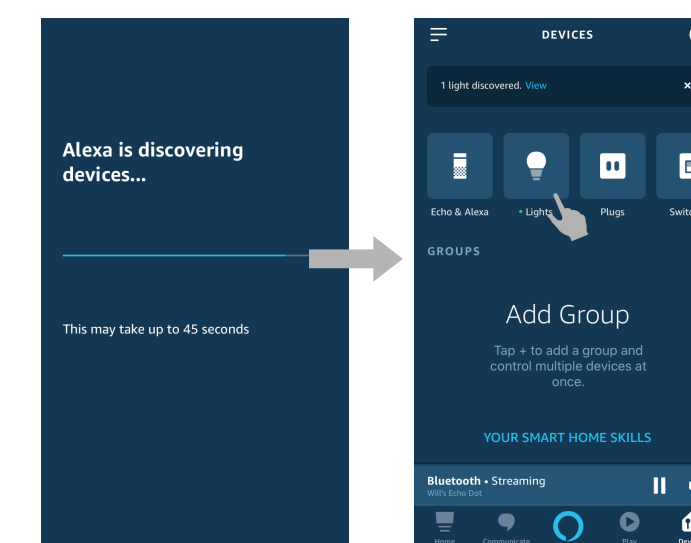
Voice interaction skill authorization

5. Click "ENABLE TO USE".
6. Enter the account and password of ELFSTORM App.



Voice interaction skill authorization

7. Close the page after the successful skill link, and the page of "Discover Devices" will appear and click enter (after the skill activation, you can also control the Echo speaker to search the device).
8. Alexa App searches for currently connected smart products.
9. Found products appear in the "Lights" page of Alexa App's "Devices" page, which can be controlled by voice, such as "turn on smart light, or turn off smart light".



FCC Warning

Any Changes or modifications not expressly approved by the party responsible for compliance could void the user's authority to operate the equipment.

This device complies with part 15 of the FCC Rules. Operation is subject to the following two conditions: (1) This device may not cause harmful interference, and (2) this device must accept any interference received, including interference that may cause undesired operation.

This equipment has been tested and found to comply with the limits for a Class B digital device, pursuant to part 15 of the FCC Rules. These limits are designed to provide reasonable protection against harmful interference in a residential installation. This equipment generates, uses and can radiate radio frequency energy and, if not installed and used in accordance with the instructions, may cause harmful interference to radio communications. However, there is no guarantee that interference will not occur in a particular installation. If this equipment does cause harmful interference to radio or television reception, which can be determined by turning the equipment off and on, the user is encouraged to try to correct the interference by one or more of the following measures:

- Reorient or relocate the receiving antenna.
- Increase the separation between the equipment and receiver.
- Connect the equipment into an outlet on a circuit different from that to which the receiver is connected.
- Consult the dealer or an experienced radio/TV technician for help.

This equipment complies with FCC radiation exposure limits set forth for an uncontrolled environment. This transmitter must not be collocated or operating in conjunction with any other antenna or transmitter.

This equipment should be installed and operated with minimum distance 20cm between the radiator& your body.

Warranty Explain

Thank you for purchasing this product. In order to protect your rights, please read the following items carefully: According to national policy standards, our company's product warranty period is 1 year (Calculated from the date of purchase, Unable to verify the date of purchase, subject to the date of manufacture). Within warranty period, Our company will give a free warranty for any malfunction caused by the quality of the product itself under normal circumstances.

Statement

The contents of this manual are subject to change due to product version upgrade or other reasons. Our company reserves the right to modify the contents of this manual without any notice or prompt. This manual is intended as a guide only. We do our best to provide accurate information in this manual. However, we do not ensure that the contents of this manual are completely error-free. All statements, information and recommendations in this manual do not constitute any express or implied. guarantee.

Items list

- WiFi Smart LED Bulb x 1
- Operations Guide x 1