

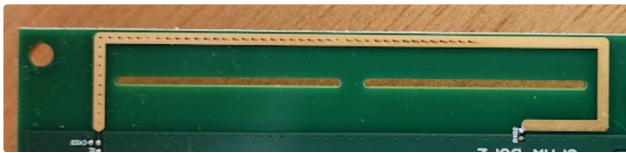
FCC Antenna Specifications

- [2AUTV-PRO731W and 2AUTV-PRO75W](#)
 - [Antenna View on PCB](#)
 - [Antenna Specifications](#)
- [2AUTV-PROUBASE](#)
 - [Antenna View on PCB](#)
 - [Antenna Specifications](#)

2AUTV-PRO731W and 2AUTV-PRO75W

This is a printed circuit loop antenna that is tuned to a center frequency of 915 MHz via a passive PI network.

Antenna View on PCB



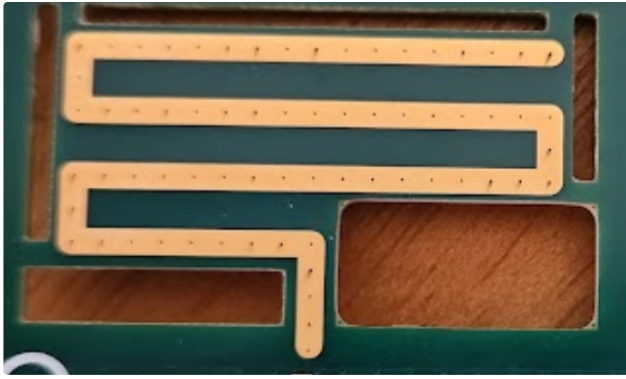
Antenna Specifications

- Antenna Topology: Loop Antenna
- Antenna Construction: PCB trace antenna
- Primary Material: Copper
- Secondary material: Nickel/Gold plating
- Total antenna trace length: 101mm
- Antenna dimensions on PCB: 67.5mm x 12.2mm
- Center frequency: 880MHz
- VSWR at CF: -29dB
- Z at operating frequency: 77 -j7 Ohms

2AUTV-PROUBASE

This is a printed circuit meander monopole antenna that is tuned to a center frequency of 915 MHz via a passive PI network.

Antenna View on PCB



Antenna Specifications

- Antenna Topology: Monopole Antenna
- Antenna Construction: PCB trace antenna
- Primary Material: Copper
- Secondary material: Nickel/Gold plating
- Total antenna trace length: 131mm
- Antenna dimensions on PCB: 36mm x 24mm
- Center frequency: 917MHz
- VSWR at CF: -27dB
- Z at operating frequency: $52 - j3.6$ Ohms