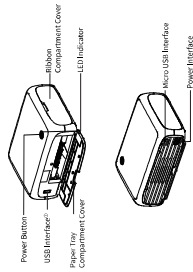


Product Introduction



Accessory List



Note: ① Only for countries that support labeling connections.
② Purchase ribbon paper list separately.

01

Power On and Connection

- Connect the power cord. Insert the power cord into the power interface on the back of the printer.



- Power on. Hold down the power button to turn on the printer. The yellow LED indicator is lighting, which indicates the printer is waiting for connection.



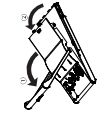
- Download app. Scan the QR code below, or search "Hypphoto" in Google Play or App Store, to download the app, and follow the model "Z661" to use it.



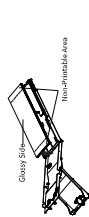
02

Loading the Photo Paper

- Open the cover of paper tray. Fit up open the outer cover (1), then the inner cover (2).



- Load the photo paper with glossy side face up. Please make sure to fully insert the paper tray into the compartment. If slides about 2cm into the compartment.



- Close the inner cover of paper tray.



04

Loading the Paper Tray

- Open the paper tray compartment cover



- Make sure the outer cover of paper tray is open



- Load the paper tray to the printer. Please make sure to fully insert the paper tray into the compartment. If slides about 2cm into the compartment.



05

Replacing the Ribbon

- Open the ribbon compartment cover



- To remove the used ribbon, move the lock upward that it will be ejected automatically.



- Load the new ribbon and make it click into place, then close the ribbon compartment cover



06

Note:
All the drawings of products and accessories in the user guide are for reference only.
Due to the updating and upgrading of the products, there may be some differences between the actual products and the drawings. For more product information, please contact Hypprint Customer Service.

iDPRT Photo Printer

Product Name: Photo Printer Dimensions: 189×113×21mm
Product Model: Z661 Weight: About 1.9kg
Input: 200-220V Operating Temperature: 5-35°C
Power: 10W Storage Temperature: 0-40°C Humidity: 15-85%RH
WiFi Connection: (WIFI) IEEE 802.11b/g/n/2.4GHz

Manufacturer: Xiamen Hypprint Electronic Technology Co., Ltd.
Address: No. 96, Beiguan Road, Tong'an District, Xiamen, China, 361100
Official Website: www.hypprint.com Email: hypprint@hypprint.com
Customer Service: Email: 24_hypprint@hypprint.com
After-Sales Service: Web: https://hypprint.serviceweb.com



Instructions for Button Operation

- When the printer is powered on, hold down the power button for 3 seconds, the yellow LED indicator is lighting.
- Turn off the printer: hold down the power button for 3 seconds and then release it; the LED indicator will be off.
- Reset of mode in power-on status: hold down the power button until the blue LED indicator is lighting, then hold down the power button for 3 seconds from the blue configuration; after resetting, the LED indicator will turn white.

Instruction for LED Indicator

| LED indicator | Symbol |
|---------------------|---|
| Yellow lighting | The system is starting. |
| White lighting | The printer is ready (not in sleep mode). |
| White flashing | The printer is in sleep mode (not ready). |
| White-dot flashing | Roller is jammed. |
| Red lighting | Ribbon has run out. |
| Blue-dot flashing | Ribbon is abnormal. |
| Red-dot flashing | Page factor ribbon is jammed. |
| Red-dot flashing | Print cover temperature. |
| Yellow-dot flashing | Firmware is updating. |

Working Position

- Please place the printer on the desk or other flat and stable surface.
- Leave some space (at least 10cm) behind the printer for paper out when printing.

Printing Wirelessly from Smartphones (AP Mode)

- Make sure that the LED indicator is on (blue) when all the time.
- Hold down the power button to switch to the AP mode.
- Open the Android app, click "Album", select the images to print and then click "Work".
- When the printer is ready, click the printer icon on the right corner; show "Zebra 3800XX" and click to connect. (Once at least four digits of Bluetooth show, "Zebra 3800XX" and click to connect.) (Once at least four digits of Bluetooth show, "Zebra 3800XX" and click to connect.) (Once at least four digits of Bluetooth show, "Zebra 3800XX" and click to connect.)
- After connecting, the printer will start to print the photos.

Printing Wirelessly from Smartphones (STA Mode)

- Make sure that the LED indicator is on (blue) when all the time.
- Open the Android app, click "Album", select the images to print and then click "Work".
- Select the images to print and click the printer icon on the top right corner; show "Zebra 3800XX" and click to connect. (Once at least four digits of Bluetooth address showed on the bottom of the printer).
- Enter the password of Wi-Fi hotspot, click "Configure Wi-Fi" and the green LED indicator will start to blink.
- After connecting, the green LED indicator is lighting, and the printer will start to print the photos.

Note: The above instructions take photo album printing for example, for GMSK, AP and Credentials printing, please experience on your own according to the guide of App.

Printing via USB (from a Computer)

- Make sure that the USB cable is plugged into your computer and the other end to the Micro USB port on the back of the printer.
- Turn on the printer.
- Download the printer driver from IDPRT website or the QR code below and install it.
- After connecting, you can print the photos from the computer.



Or visit: <http://www.idprt.com/ibuyer>

Precautions

- The heat capacity is high, which is 110°C. If the environmental temperature is too high, the print quality may be affected.
- Please do not use the universal adaptor, color ink and photo paper to ensure the print quality.
- Please do not touch the film of color ink and the glossy side of photo paper in case of fingerprints that may affect the print quality.
- During printing, the area around the thermal print head is very hot, do not touch it, so you could be burned.
- Please do not touch the photo paper by force during printing, or else it may damage the printer.
- Please remove the paper tray when it is not used for a long time, and close the covers of the printer and the paper tray to avoid dust entering.

FCC WARNING

This device complies with part 15 of the FCC Rules. Operation is subject to the following two conditions: (1) This device may not cause harmful interference, and (2) This device must accept any interference received, including interference that may cause undesired operation.

Any changes or modifications not expressly approved by the party responsible for compliance could void the user's authority to operate the equipment.

NOTE: This equipment has been tested and found to comply with the limits for a Class B digital device, pursuant to Part 15 of the FCC Rules. These limits are designed to provide reasonable protection against harmful interference in a residential installation. This equipment generates, uses and can radiate radio frequency energy and, if not properly installed and used, may cause interference to radio communications. Interference to radio communications.

However, this equipment does not, in itself, ensure that the device will not cause interference. This equipment does not ensure that the device will not cause interference to reception, which can be determined by turning the equipment off and on; the user is encouraged to try to correct the interference by one or more of the following measures: — Increase the separation between the equipment and receiver. — Connect the equipment into a circuit different from that to which the receiver is connected.

- Use a different power outlet or power outlet circuit.
- Use a different power outlet or power outlet circuit.
- Use a different power outlet or power outlet circuit.
- Use a different power outlet or power outlet circuit.
- Use a different power outlet or power outlet circuit.

FCC ID: JMU1E-23A1366

Disclaimer

Thank you for purchasing our product. By using this product, you hereby signify that you have read, understood and agree to abide by the terms and conditions herein. The user should observe safe and lawful practices including, but not limited to, those set forth in this document. Our company does not assume any liability for damages or losses of any kind, including but not limited to, those caused by the use of this product with this user manual or intentional misconduct on the part of the user.

Except for the cooperation with the applicable laws, the warranty is not provided for this product. The user should be aware of the risks of using this product, including but not limited to the loss of profits, income or data due to the violation of explicit or implied warranties or conditions mentioned in this user manual.

Information in this user manual is for informational purposes only. It is subject to change without prior notice, due to the manufacturer's continuous development program. This document supersedes and replaces all information supplied prior to the publication hereof.



After scanning the QR code:
© Visit: <http://www.idprt.com/ibuyer>
Customer Service Email: 1.idprt@idprt.com
Customer Service Email 2: ibuy@idprt.com

IDPRT Photo Printer Quick Start Guide Zebra 1966

Please read the guide carefully, before using the product and setup it correctly.