

USER MANUAL

■ Product specifications

Product Name: WIFI Dongle

Input: 3.3V  0.5A

Frequency Range :2.4GHz-2.483GHz

Operating Temperature :-40~105°C

Warning: Changes or modifications to this unit not expressly approved by the part responsible for compliance could void the user' s authority to operate the equipment.

WEEE(Waste Electrical and Electronic Equipment) Directive

This information only applies to customers in the European

Union,according to Directive 2012/19/EU OF THE EUROPEAN

PARLIAMENT AND OF THE COUNCIL OF 04 July 2012 on waste electrical

and legal systems,and to customers in countries in Europe,Middle East and Africa(EMEA)

where they have implemented equivalent regulations .

For other countries,please contact your local government to investigate the possibility of recycling your product.



RF exposure statement

This equipment complies with the FCC RF radiation exposure limits set forth for an uncontrolled environment. This equipment should be installed and operated with a minimum distance of 20cm between the radiator and any part of your body.

This equipment meets the exemption from the routine evaluation limits in section 2.5 of RSS-102. It should be installed and operated with a minimum distance of 20cm between the radiator and any part of your body.

Cet équipement est conforme à l'exemption des limites d'évaluation habituelle de la section 2.5 de la norme RSS-102. Il doit être installé et utilisé à une distance minimale de 20 cm entre le radiateur et toute partie de votre corps.

FCC Warning

This device complies with Part 15 of the FCC Rules. Operation is subject to the following two conditions:

(1) This device may not cause harmful interference, and (2) this device must accept any interference received, including interference that may cause undesired operation.

NOTE 1: This equipment has been tested and found to comply with the limits for a Class B digital device, pursuant to part 15 of the FCC Rules. These limits are designed to

provide reasonable protection against harmful interference in a residential installation. This equipment generates uses and can radiate radio frequency energy and, if not installed and used in accordance with the instructions, may cause harmful interference to radio communications. However, there is no guarantee that interference will not occur in a particular installation. If this equipment does cause harmful interference to radio or television reception, which can be determined by turning the equipment off and on, the user is encouraged to try to correct the interference by one or more of the following measures:

- Reorient or relocate the receiving antenna.
- Increase the separation between the equipment and receiver.
- Connect the equipment into an outlet on a circuit different from that to which the receiver is connected.
- Consult the dealer or an experienced radio/TV technician for help.

NOTE 2: Any changes or modifications to this unit not expressly approved by the party responsible for compliance could void the user's authority to operate the equipment.

IC WARNING

This device contains licence-exempt transmitter(s) that comply with Innovation, Science and Economic Development Canada's licence-exempt RSS(s). Operation is subject to the following two conditions:

- (1) This device may not cause interference.
- (2) This device must accept any interference, including interference that may cause undesired operation of the device.

L' émetteur/récepteur exempt de licence contenu dans le présent appareil est conforme aux CNR d' Innovation, Sciences et Développement économique Canada applicables aux appareils radio exempts de licence. L' exploitation est autorisée aux deux conditions suivantes:

1. L' appareil ne doit pas produire de brouillage;
2. L' appareil doit accepter tout brouillage radioélectrique subi, même si le brouillage est susceptible d' en compromettre le fonctionnement.

FCC ID:2AUTE-TT4W2

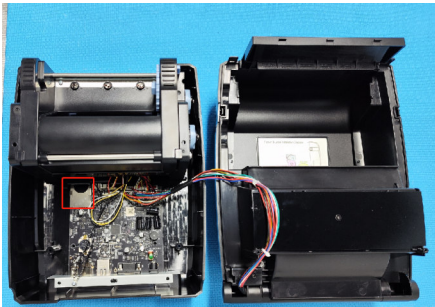
IC:26218-TT4W2



Manufacturer: Xiamen Hanin Electronic Technology Co., Ltd.
Made in China

Installation

Open the machine shell and locate the motherboard wireless module socket



WI-FI SettingsPrinter

Wi-fi factory default is Off , and it needs to be turned on through
menbefore use . In AP mode , the IP address is 192.168.1.1 , SSID is TT4W
Ap-xxxx(last four digits of Wi-fi Mac address) . If you need to change the
Wi-fi settings ,please set it by the Utility tool