

SL42-BT User Guide



Windows
USB+Bluetooth

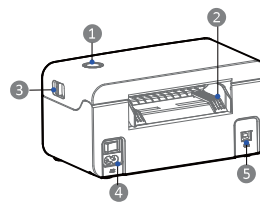


MAC OS
USB

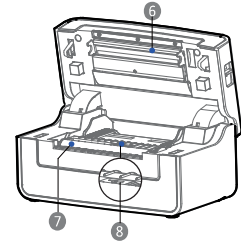


Website: www.hpert.com
After-service E-mail: support@hpert.com

Appearance



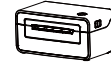
- 1 Feed Button(Status Indicator)
- 2 Paper Guide
- 3 Cover Open Levers
- 4 Power Receptacle



- 5 USB Port
- 6 Print Head Module
- 7 Platen
- 8 Movable Paper Sensor

Packing List

Standard



Printer



Power Cord



USB Cable



Quick Start Guide



Printer Driver



Type-C Adapter



Testing Label

Optional



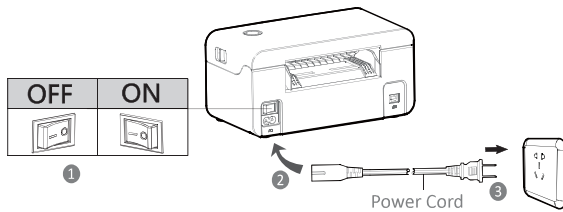
Folding Paper Storage in Bluetooth Version

-1-

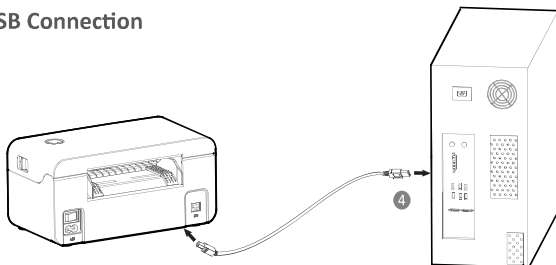
Printer Connection

Power Connection

1. Make sure the printer's power switch is in "off" position.
2. Connect the power cord to printer.
3. Connect the other end of power cord to the outlet.
4. Connect the USB cable to the printer and PC.



USB Connection



⚠ Note:

- Use the original power adapter only, in case the damage caused by charging improperly.
- Please unplug the printer power cord if it is not in use for a long time.

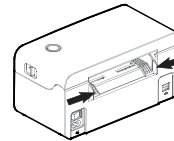
-2-

Fanfold Label Loading

Folding Paper Loading

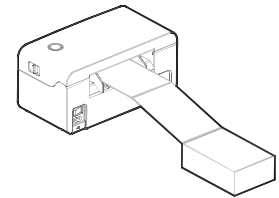
01

Turn the power on, adjust the paper guide to fit the width of paper.



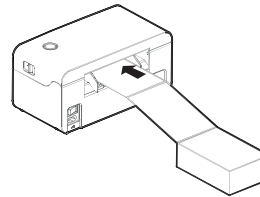
02

Insert the paper into the entry slot.

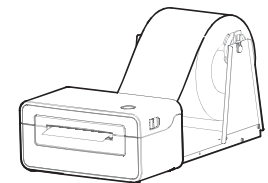


03

The paper will be sucked into the paper guide automatically.



Roll Type Label Loading



⚠ Note:

- When the printer is power on, the paper will be sucked into the paper guide automatically.
- The roll type label holder needs to be aligned with the hooks at the bottom of the printer.

-3-

Feed Button

• Turn on

In the shutdown state, turn on the power switch behind the printer, then the indicator will be light on.

• Turn off

When the power switch is turned off, the printer shuts down and the indicator light is off. In the power-on state, turn off the power switch behind the printer, then the indicator will be light off.

• Feed Button

- 1) Press the feed button, the printer sends the paper out to the specified position depending on the type of paper used. When using continuous paper, long press the feed button to send a fixed length of paper. If using label paper, press the feed button once that will send out a whole label.
- 2) When the printer is printing, press the feed button to pause the current printing and the light is green. Press the button again to print the unfinished print task.

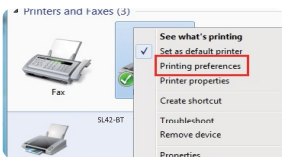
⚠ Caution:

This is a Class A product. In a domestic environment this product may cause radio interference in which the user may be required to take adequate measures.

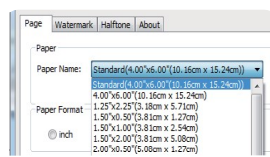
-4-

Printing Preferences

1. Click "Start" → "Devices and Printers". Right-click the icon and select "Printing preferences", as the figure (1).
2. Click "Paper Name", select the paper type as needed, as the figure (2).

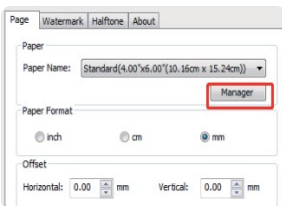


(1)

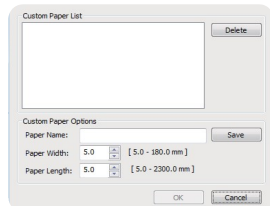


(2)

- Click "Manager" to add a new stock, as the figure (3)(4).

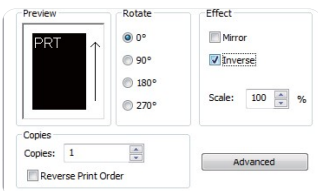


(3)



(4)

- Select "Rotate" or "Effect", it will be showed in the "Preview", as the figure (5).



(5)

-6-

Windows Driver Instruction

Driver Preparation for windows

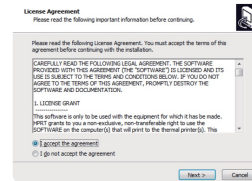
Download the Windows Driver application program in USB drive.

Driver Installation for Windows

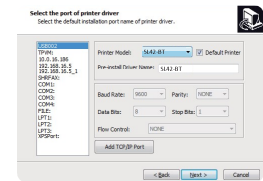
⚠ Warning:

Recommend to close security software before installation in case of preventing installation.

1. Select one interface to connect your printer to computer.
2. Turn on the printer and check if it is connected successfully.
3. Double click Windows Driver.
4. Agree with the license agreement and click "Next", as the figure (1).
5. Select the port name of printer driver and click "Next", as the figure (2).

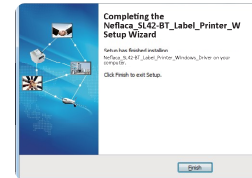


(1)



(2)

6. Then click "Finish", as the figure (3).
7. After installation, view the icon in "Start" → "Devices and Printers", as the figure (4).



(3)

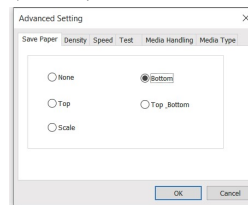


(4)

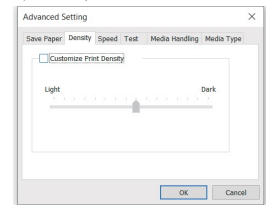
-5-

3. Click "Advanced" to set "Save Paper", "Density", "Speed", "Test", "Media Handling" and "Media Type".

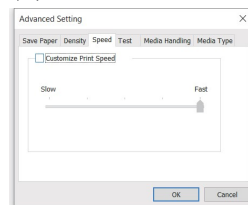
1) Save Paper



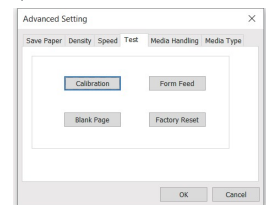
2) Density



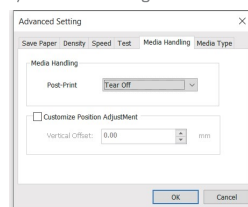
3) Speed



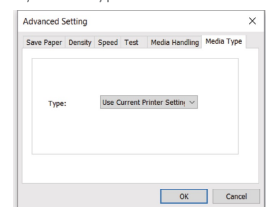
4) Test



5) Media Handling

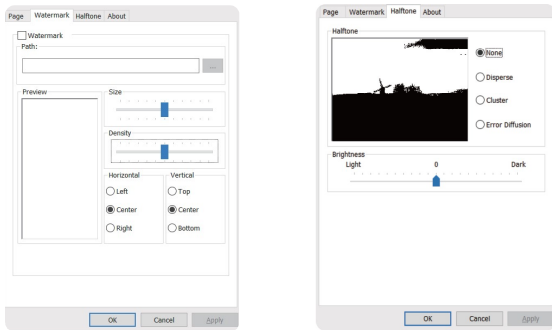


6) Media type



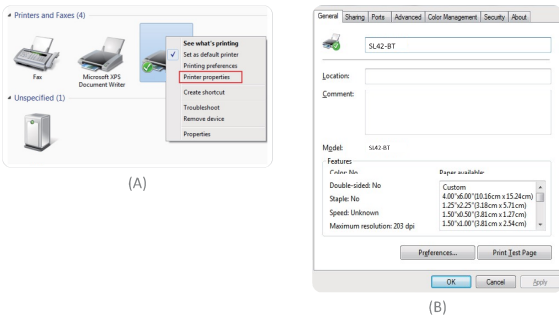
-7-

- Click "Watermark" (Recommends BMP format).
- Click "Halftone".



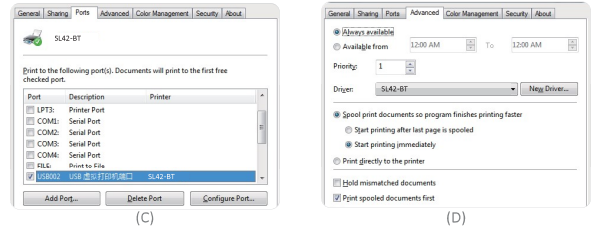
Printer Properties

- Click "Start" → "Devices and Printers". Right-click the icon and select "Printer properties", as the figure (A).
- Click "General" → "Print Test Page", and printer will print labels with current settings, as the figure (B).



-8-

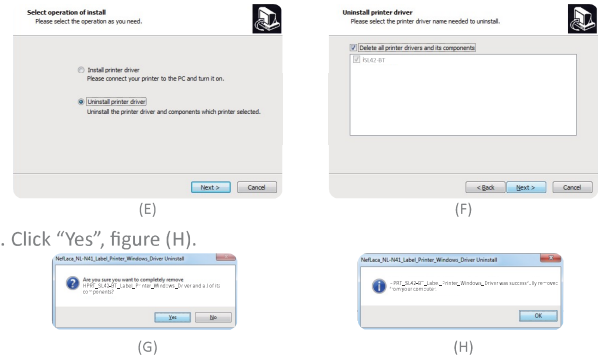
- Click "Ports", then select the port needed, figure (C).
- Click "Advanced" to set the available time for the printer, figure (D).



Driver Removing

Note: Please turn off the printer or unplug the USB cable before removing the driver.

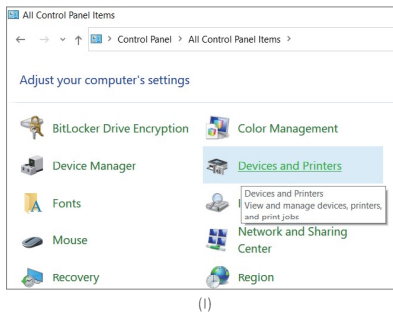
- Double click Windows Driver, figure (E).
- Select "Uninstall printer driver", then click "Next", figure (F).
- Select the driver to be uninstalled, then click "Next", figure (G).



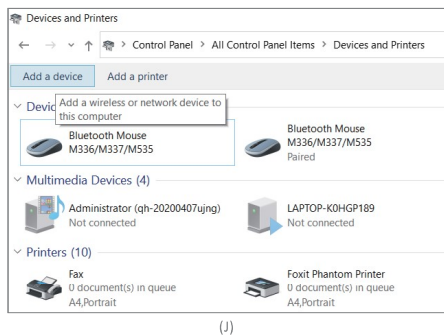
-9-

Driver Installation by Bluetooth

- Open the "Control Panel" → "Devices and Printers", as the figure(I).

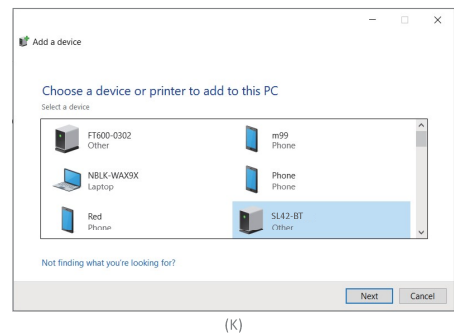


- Click the "Add a device" on the top left to search the Bluetooth devices, as the figure(J).

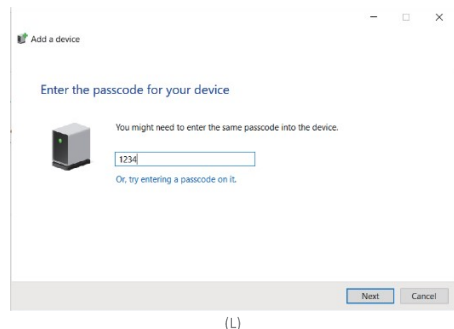


-10-

- Two "SL42-BT-XXXX" will appear in the device list. Select the one marked as "other" under the device name, then click "Next", as the figure(K).

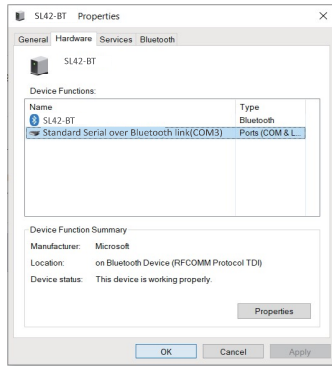


- Please enter the default pin "1234", then click "Next", as the figure(L).



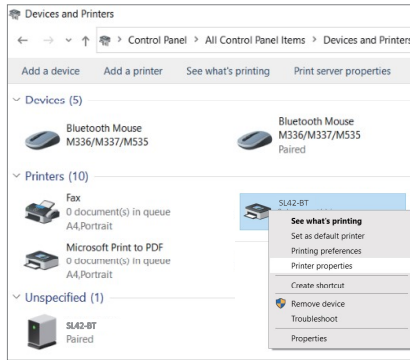
-11-

5. After Bluetooth pairing, select the "SL42-BT-XXXX" Bluetooth device displayed in Unspecified; right-click on "Properties" to see the serial port number assigned by "Properties" → "Hardware", as the figure(M).



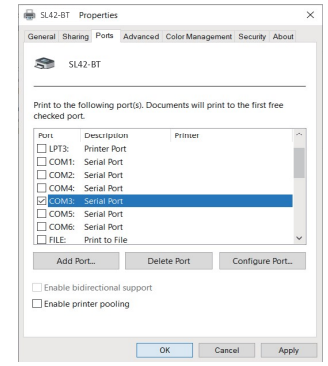
(M)

6. After installation, select "SL42-BT-XXXX" in the "Devices and Printers", right-click "Printer properties", as the figure(N).



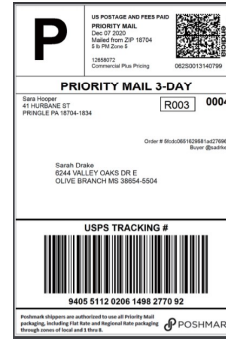
(N)

7. Change "Properties" → "Ports", select the serial port number assigned in the step 5 and then tick, click "OK" and save, as the figure(O).

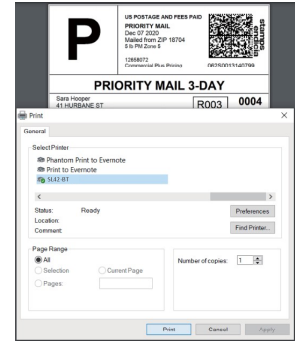


(O)

8. Open the document you want to print for printing, as the figure(P)(Q).



(P)



(Q)

Mac Driver Instruction

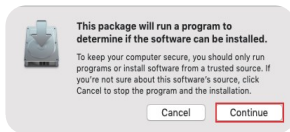
Driver Preparation for macOS

Download the Mac Driver application program in USB drive.

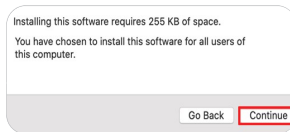
Driver Installation for macOS

Warning:
Under different operating system, the screen has a slight difference. Please operate it according to the tips. Take the macOS 10.15 as an example.

1. Double click the Driver and click "Continue", figure (a).
2. Select a destination and click "Continue", figure (b).

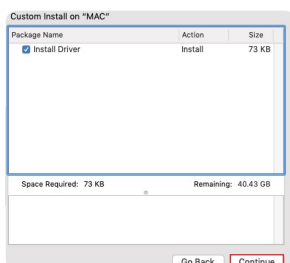


(a)



(b)

3. Select "Installation Type" and click "Continue" → "Install", figure (c)(d).

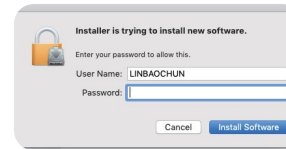


(c)

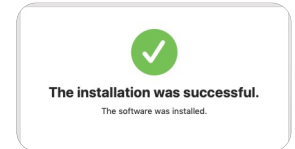


(d)

4. Type in the password of your computer, figure (e).
5. The installation was successful, figure (f).

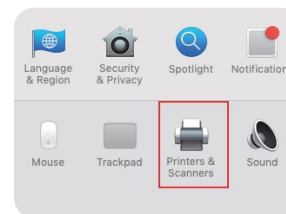


(e)



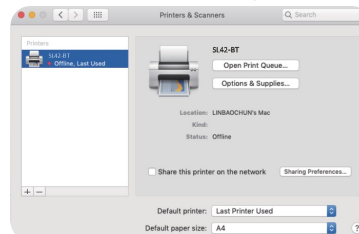
(f)

6. Turn on the printer and connect it to your computer (for example: via USB cable).
7. Click: Launchpad → System Preferences → Printers & Scanners, figure (g).



(g)

8. Under "Printer & Scanner", printer "SL42-BT" is available, figure (h).



(h)

Troubleshooting

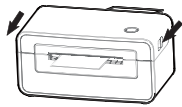
LED Display 📢

● Blue	Always on	The printer is ready
● Purple	Always on	The print head is over heat
● Red	Always on	The cover is not closed
	Flash slowly	Paper out
● Orange	Flash rapidly	Label learning is abnormal
	Always on	The printer is not ready yet
● Green	Flash slowly	Paper jam, paper position is abnormal
	Flash rapidly	Printing
	Flash rapidly	Printing pause
	Flash rapidly	Receiving data

Paper Jam Handling

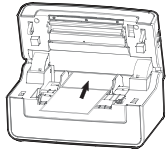
01

Press the cover open levers and hold upwards, then open the cover.



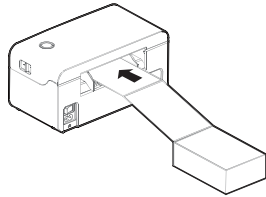
02

Take out the jammed paper, then clean up the print head and platen.



03

Reload a new paper.



⚠️ Note: turn off the printer power when taking the above steps.

Problem	Cause	Solution
4. Misalignment / skip label.	The printer is uncalibrated.	Calibrate the printer Method 1: Tools--> "Automatic label learning". Method 2: Press and hold the feed button (top button) until the blue light goes out twice and then release.
	The tag format is incorrect.	Check your label format and correct it as needed.
5. Paper jam in the printer	The paper is not placed correctly in the printer.	Open the printer cover and remove the jammed paper. Then clean the print head paper suction port and place the new paper.
6. The paper is not sucked in by the printer.	The paper is not detected by paper sensor in the middle of the printer.	When placing paper from back entry slot, push it flat to the position of the paper sensor, and the paper sensor will trigger the automatic suction function when the paper is detected.
7. The label or image is offset during printing.	The printer uses a discontinuous label, but it is configured to work in a continuous mode.	Set the printer as the correct medium type.
	The paper does not conform to the specifications.	Use the paper that meets the specifications.
	Printer uncalibrated.	Calibrate the printer.
	The platen is too dirty.	Clean print head and platen.
	The calibration of the paper sensor is incorrect.	Calibrate the printer.
	The loading of the media is incorrect.	Ensure that the media is properly loaded.
	The media is incompatible.	Must use media that meets printer specifications.

Print Problem

Problem	Cause	Solution
1. Common quality problem of print.	Error speed setting.	Set minimum printing speed by control panel, drivers and software to attain best printing quality.
	Incorrect margins and paper size.	Make sure the label size is correct before printing. If the content exceeds the label size, the printer may "shrink" the size to a smaller size, causing the fade content.
	Incorrect print density setting.	To obtain the best print quality, the print depth should be set to the minimum set value for your application.
	The print head is dirty.	Use a cotton swab moistened with alcohol to clean it from the center to the sides of the print head. After cleaning the print head, do not use the printer immediately. Use it after the alcohol completely evaporate (after 1 to 2 minutes) and the print head is completely dry.
	The creation quality of the source file is not satisfactory.	Print a sample label to test whether the printer is working well.
2. White spots appear on the label.	The print head is broken.	Change another print head.
	The print head is dirty.	Use a cotton swab moistened with alcohol to clean it from the center to the sides of the print head. After cleaning the print head, do not use the printer immediately. Use it after the alcohol completely evaporate (after 1 to 2 minutes) and the print head is completely dry.
	The label is upside down/on the wrong side.	Make sure to load the label correctly, and the printing side should face up.
3. Blank label printed.	The label is not a "direct thermal" label.	Make sure your label is "direct thermal" label.
	Printer system error.	Restart the printer, continue to try to print. If printing is still unsuccessful, please contact customer service.

Problem	Cause	Solution
8. The bar code printed on the label can not be scanned.	The printing is too dark or too light, the barcode does not meet the specifications. There is not enough blank space around the barcode.	Adjust the concentration or print speed properly. Leave at least 3.2 mm (1/8 inch) between the barcode on the label and other printed areas and the edge of the label.
9. Auto calibration failed.	The loading of the media is incorrect.	Ensure that the media is properly loaded.
	The medium is not detected by the sensor.	Calibrate the printer.
	The sensor is dirty or incorrectly positioned.	Make sure that the sensor is clean and correctly positioned. During the calibration process, the gap mark or black mark should be aligned with the paper sensor.
	Incorrect media type setting.	Set the printer media type correctly.

Communication Problem

Problem	Cause	Solution
1. The label format has been sent to the printer, but it has not been identified.	The communication parameters are not correct.	Check printer driver or software communication settings.
		Check the handshake protocol setting for the printer and the settings used must be able to match the settings used by the computer host. If the driver is used, the driver communication settings related to the connection should be checked.
2. The DATA light did not flash.		
3. The label format has been sent to the printer, but it has not been identified.	The prefix and the separated character set in the printer do not match the character set in the label format.	Check prefix and separate characters.
4. The DATA lights flash, but not print.	The incorrect data is being sent to the printer.	Check the communication settings on the computer to ensure that these settings match the settings on the printer's printer. If the fault still exists, the label format should be checked.

FCC WARNING

This device complies with part 15 of the FCC Rules. Operation is subject to the following two conditions: (1) this device may not cause harmful interference, and (2) this device must accept any interference received, including interference that may cause undesired operation.

Any changes or modifications not expressly approved by the party responsible for compliance could void the user's authority to operate the equipment.

NOTE: This equipment has been tested and found to comply with the limits for a Class B digital device, pursuant to part 15 of the FCC Rules. These limits are designed to provide reasonable protection against harmful interference when the equipment is operated in a commercial environment. This equipment generates, uses, and can radiate radio frequency energy and, if not installed and used in accordance with the instruction manual, may cause harmful interference to radio communications.

Operation of this equipment in a residential area is likely to cause harmful interference in which case the user will be required to correct the interference at his own expense.

- Reorient or relocate the receiving antenna.
- Increase the separation between the equipment and receiver.
- Connect the equipment into an outlet on a circuit different from that to which the receiver is connected.
- Consult the dealer or an experienced radio/TV technician for help.

To maintain compliance with FCC's RF Exposure guidelines, This equipment should be installed and operated with minimum 20cm distance between the radiator and your body: Use only the supplied antenna.

Xiamen Hanin Electronic Technology Co., Ltd.

Add: Room 305A, Angye Building, Pioneering Park, Torch High-tech, Zone, Xiamen

After Service: support@hprt.com

Web: www.hprt.com