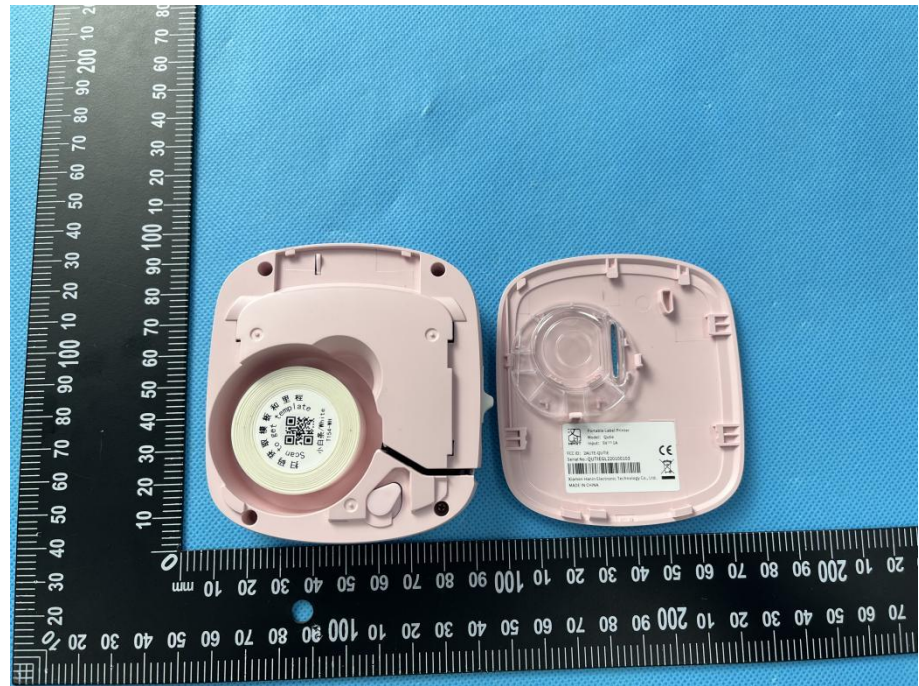


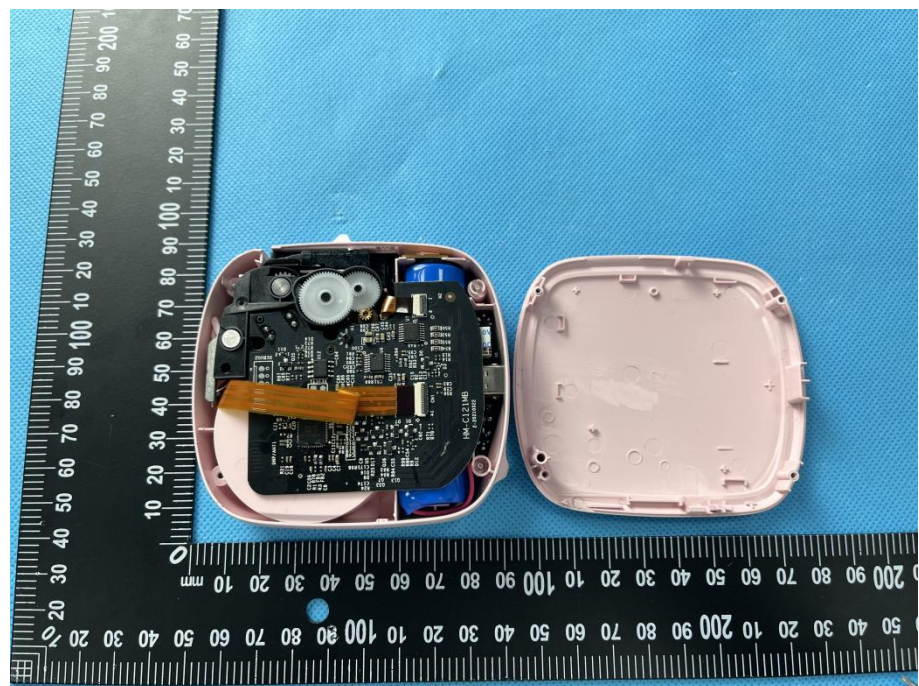
EXHIBIT 3 - EUT INTERNAL PHOTOGRAPHS

Battery Capacity: 1500mAh

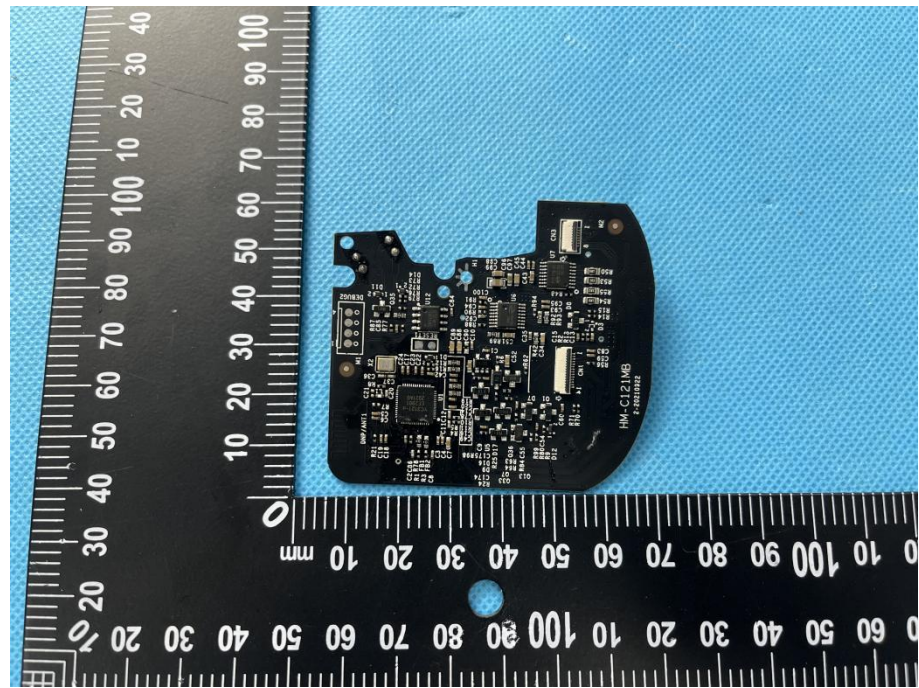
EUT Housing and Board View 1



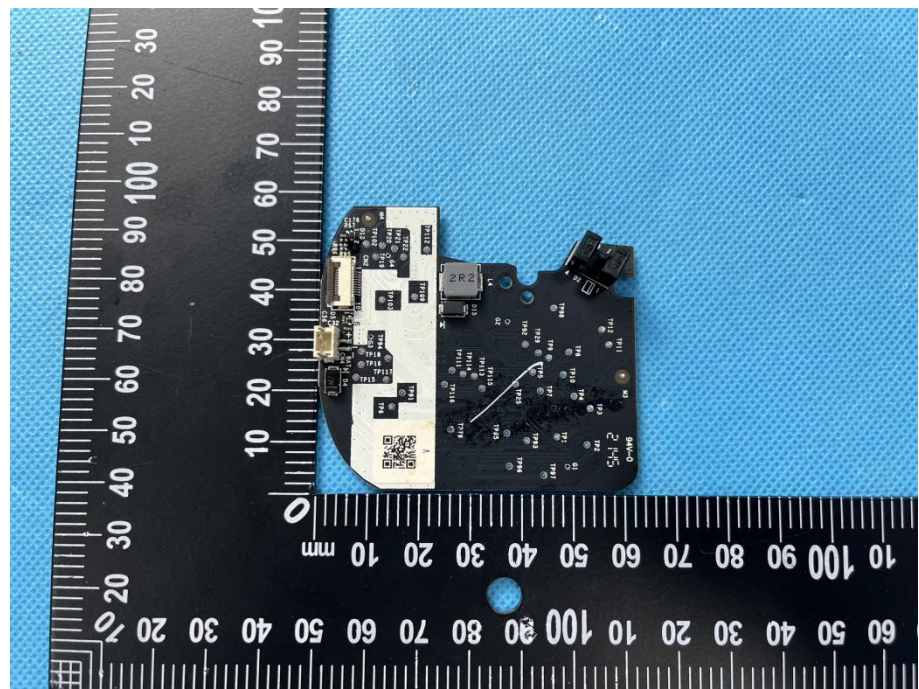
EUT Housing and Board View 2

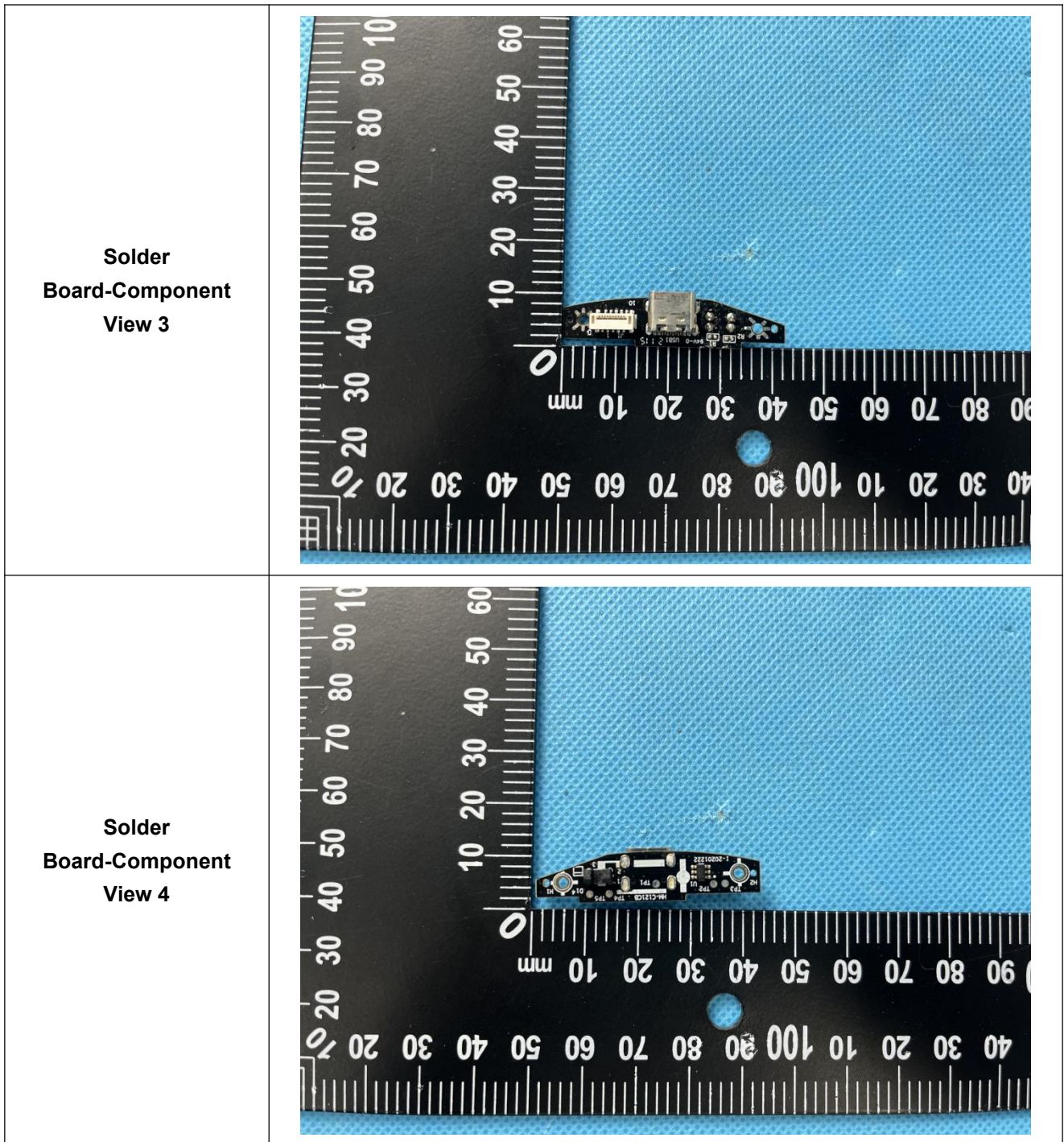


**Solder
Board-Component
View 1**

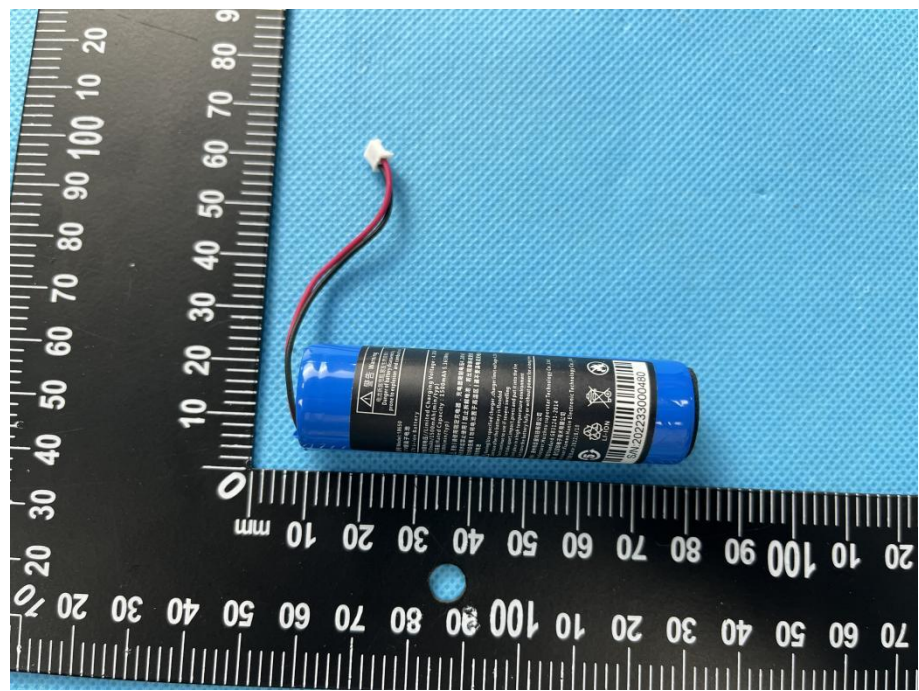


**Solder
Board-Component
View 2**





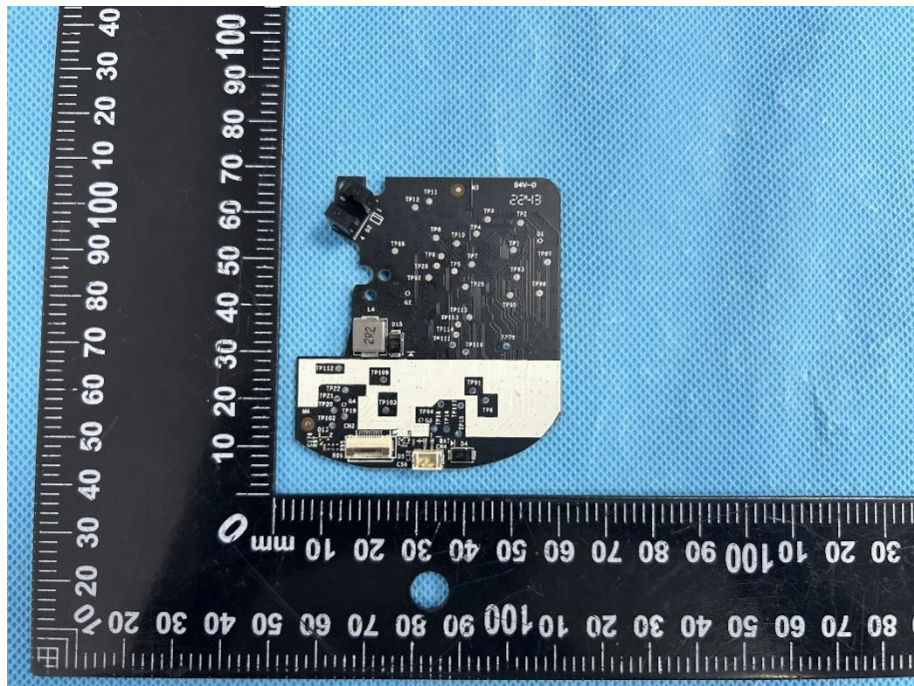
**Solder
Board-Component
View 5**



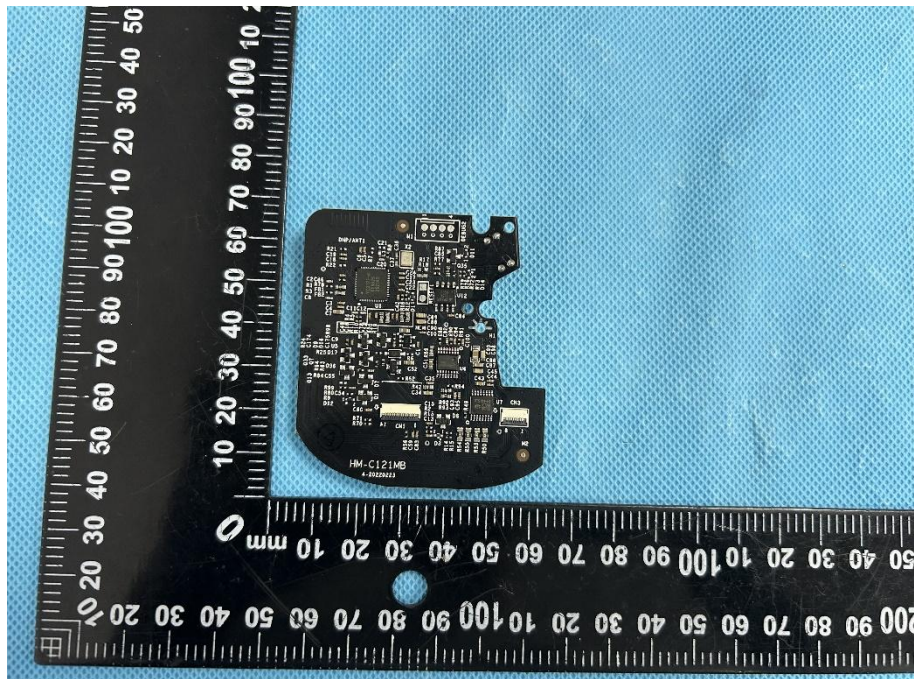
Battery Capacity: 600mAh

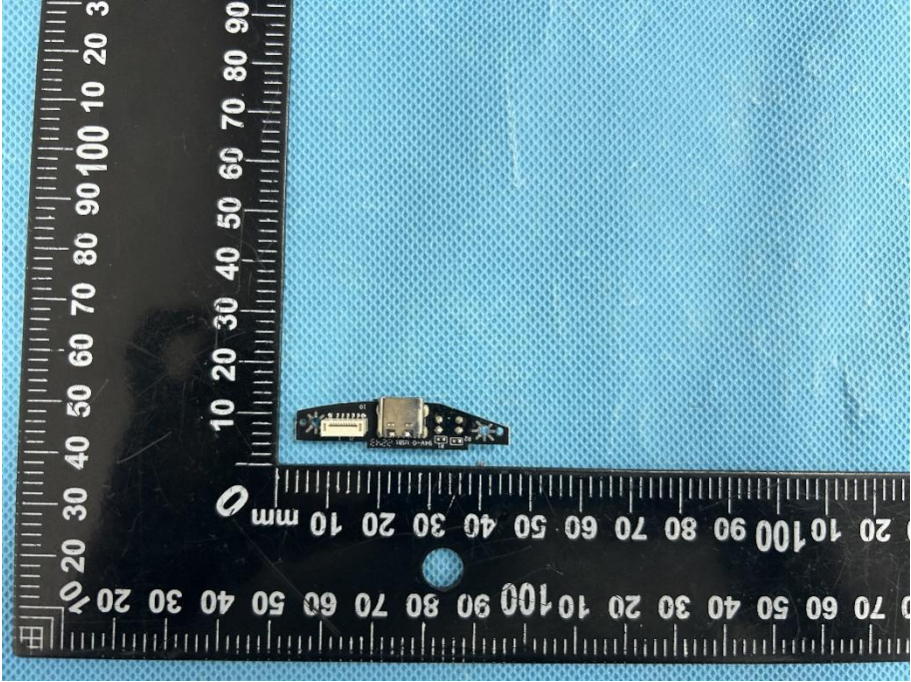
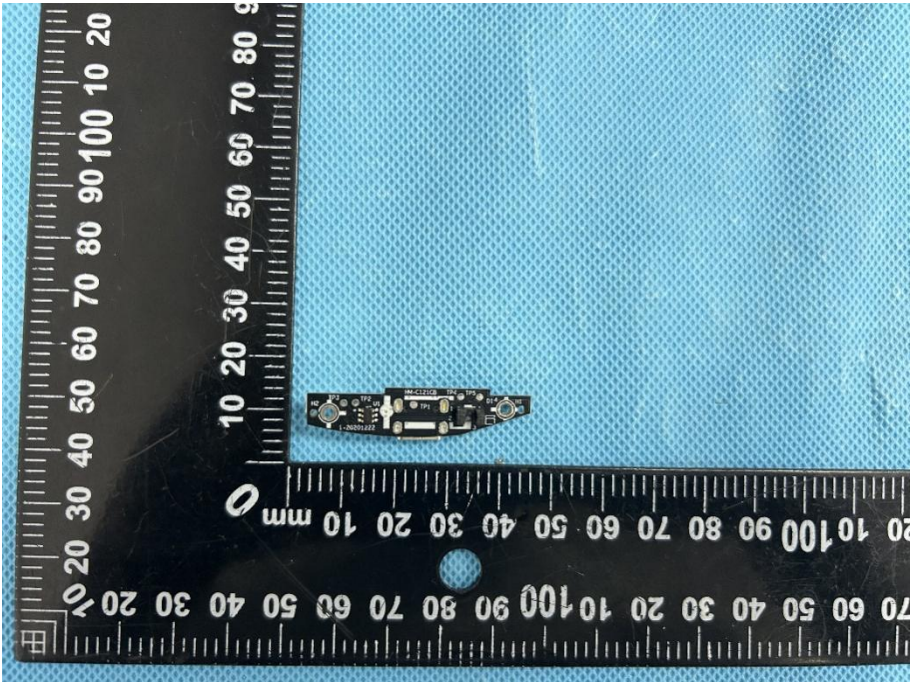
<p>EUT Housing and Board View 1</p>	
<p>EUT Housing and Board View 2</p>	

**Solder
Board-Component
View 1**



**Solder
Board-Component
View 2**



<p>Solder Board-Component View 3</p>	 <p>A photograph of a small, dark-colored solder board component. The component is rectangular with a USB-A connector on the left side and several surface-mounted components, including a microcontroller and various passive components. It is placed on a blue textured surface next to a black L-shaped ruler for scale. The ruler has markings in millimeters and centimeters.</p>
<p>Solder Board-Component View 4</p>	 <p>A photograph of the same solder board component from a different perspective. This view shows the top surface of the component, highlighting the microcontroller, various capacitors, and other surface components. The component is placed on the same blue textured surface next to the same black L-shaped ruler for scale.</p>

**Solder
Board-Component
View 5**



Antenna View

