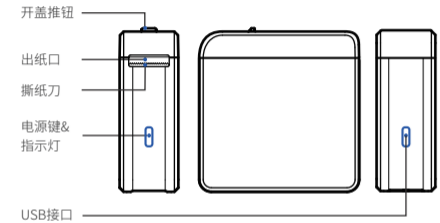


## 产品介绍

### 外观与组件



### 开箱清单



## 产品介绍

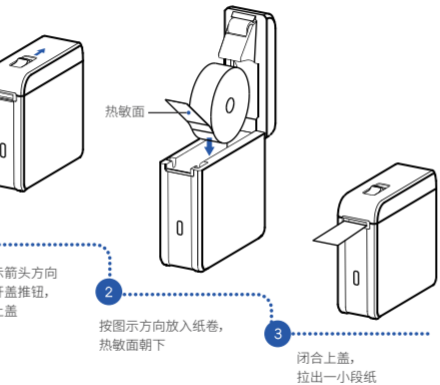
### 指示灯状态

- **红灯 异常状态**
  - 常亮:异常(卡纸/缺纸/开盖)
  - 快闪:热写头过温
  - 慢闪:电量低
- **绿灯 基本状态**
  - 常亮:充电完成/打印机就绪
  - 慢闪:充电中
- **红绿灯交替闪烁** --- 固件升级中

### 按键操作

- 1 长按电源键: 开/关机
- 2 短按电源键: 定位校准热敏标签纸和加热线位置

## 装纸说明



## APP下载

扫描二维码下载APP:



## 连接打印

### 01

先打开手机蓝牙, 然后打开APP, 点击“设备连接”, 选择“HPRT M11”。

### 02

选择“扫码取模”, 对准纸卷管芯上的二维码扫描, 即可充值耗材里程, 同时获取耗材模板。

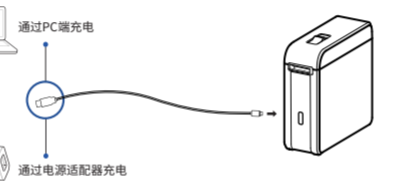
### 03

根据需要编辑标签, 编辑完成后点击打印即可。



## 电池充电

当电池电量低时, 指示灯会闪烁(红灯慢闪), 请使用配套USB 线及时进行充电。如果继续打印, 打印机可能会自动关机。

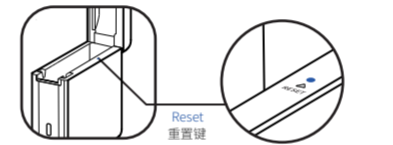


**注意:** 可以用电源适配器或电脑USB供电, 出货时不配适配器。消费者若使用电源适配器充电, 则应购买使用获得CCC 认证且满足标准要求的电源适配器。

## 常见问题

出现死机情况时, 怎么办?

打开打印机上盖, 用回形针按一下Reset键, 打印机将关闭, 重启打印机即可。



## 保修条款

- 一、自出厂之日起, 本产品保修12个月。
- 二、存在以下情况之一者, 不属于保修范围之内:
  - 1 未经我公司及授权维修人员许可, 擅自对产品进行拆卸, 或产品序列号标贴被撕去及模糊不清, 无法辨认;
  - 2 由于固体颗粒刮伤热敏头片, 引起的打印白线, 则头片不属于保修范围;
  - 3 其他人为引起的故障。
- 三、保修期内, 维修时所更换的产品零配件归我公司所有。
- 四、用户负责将产品寄送至我公司售后服务部或我公司授权的维修站点进行保修服务。
- 五、厦门汉印电子技术有限公司拥有本保修条款的最终解释权。

注意: 若用户自行用错误型号电池更换会有爆炸危险, 请务必按照说明寄回维修站点处置用完的电池。

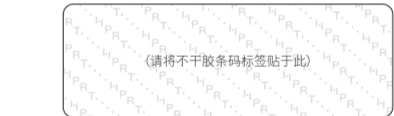
制造商: 厦门汉印电子技术有限公司  
 电话: 400-766-7666  
 地址: 福建省厦门市同安区榕源路96号  
 官网: www.hpirt.com.cn

## 产品保修卡

尊敬的用户:

为了保障您的权益以及为您提供更优质的售后服务, 请您在购买产品时仔细填写并保留此卡, 进行保修服务时请与购买发票一同出示!

用户名称: \_\_\_\_\_  
 联系地址: \_\_\_\_\_省 \_\_\_\_\_市 \_\_\_\_\_区(县)  
 联系电话: \_\_\_\_\_  
 产品型号(序列号): \_\_\_\_\_



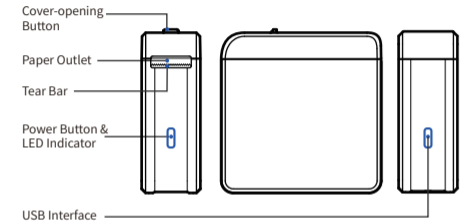
经销商名称(盖章): \_\_\_\_\_  
 联系地址: \_\_\_\_\_  
 联系电话: \_\_\_\_\_  
 购买日期: \_\_\_\_\_年 \_\_\_\_\_月 \_\_\_\_\_日



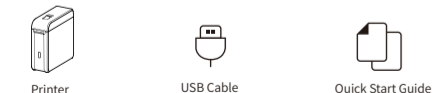
在线微信客服  
After-sales WeChat

## Product Introduction

### Appearance and Components



### Packing List



## Product Introduction

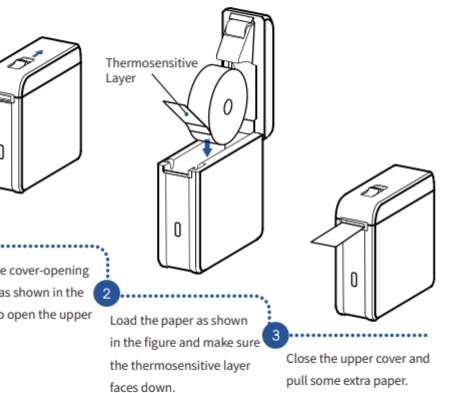
### LED Indicator Status

- Red LED Error Status
  - ON: Error (Paper jam/Paper end/Cover opened)
  - Quick Flash: TPH is over temperature
  - Slow Flash: Low power
- Green LED Basic Status
  - ON: Charging finished/Printer is ready
  - Slow Flash: Charging
- Red and green LED flash alternately ---- Firmware updating

### Button Operation

- 1 Hold down the power button for a few seconds: Turn on/off the printer
- 2 Press the power button: Position and calibrate the location of thermal label paper and heating line

## Paper Loading



## App Download

Scan the QR code to download App.



## Connection and Printing

### 01

Turn on Bluetooth on your mobile phone, then open App, click "Device Connection", select "HPRT M11".



### 02

Select "Scan to get the template", then scan the QR code on the paper core to recharge consumables mileage and get the templates.



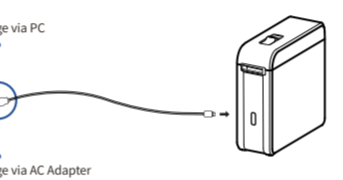
### 03

Edit the label as need, and then click "Print" after editing.



## Battery Charging

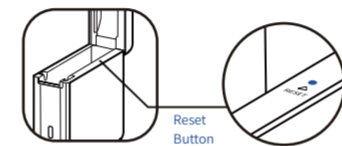
When the battery power is low, the red LED indicator will flash slowly. Please charge it by the exclusive USB cable in time. If you continue printing, it may power off automatically.



**Note:** The printer can be charged via computer USB port or AC adapter. Please note that the AC adapter is not supplied.

## General Q&A

When the printer crashes, how to deal with it?  
Open the upper cover, lightly hold down the [Reset] button with a pin so that the printer will be off, and then restart the printer.



## FCC WARNING

This device complies with part 15 of the FCC Rules. Operation is subject to the following two conditions: (1) this device may not cause harmful interference, and (2) this device must accept any interference received, including interference that may cause undesired operation.

Any changes or modifications not expressly approved by the party responsible for compliance could void the user's authority to operate the equipment.

NOTE: This equipment has been tested and found to comply with the limits for a Class B digital device, pursuant to Part 15 of the FCC Rules. These limits are designed to provide reasonable protection against harmful interference in a residential installation. This equipment generates, uses and can radiate radio frequency energy and, if not installed and used in accordance with the instructions, may cause harmful interference to radio communications. However, there is no guarantee that interference will not occur in a particular installation.

If this equipment does cause harmful interference to radio or television reception, which can be determined by turning the equipment off and on, the user is encouraged to try to correct the interference by one or more of the following measures:  
-- Reorient or relocate the receiving antenna.  
-- Increase the separation between the equipment and receiver.

-- Connect the equipment into an outlet on a circuit different from that to which the receiver is connected.  
-- Consult the dealer or an experienced radio/TV technician for help.

The device has been evaluated to meet general RF exposure requirement. The device can be used in portable exposure condition without restriction.

FCC ID:2AUTE-PLP

