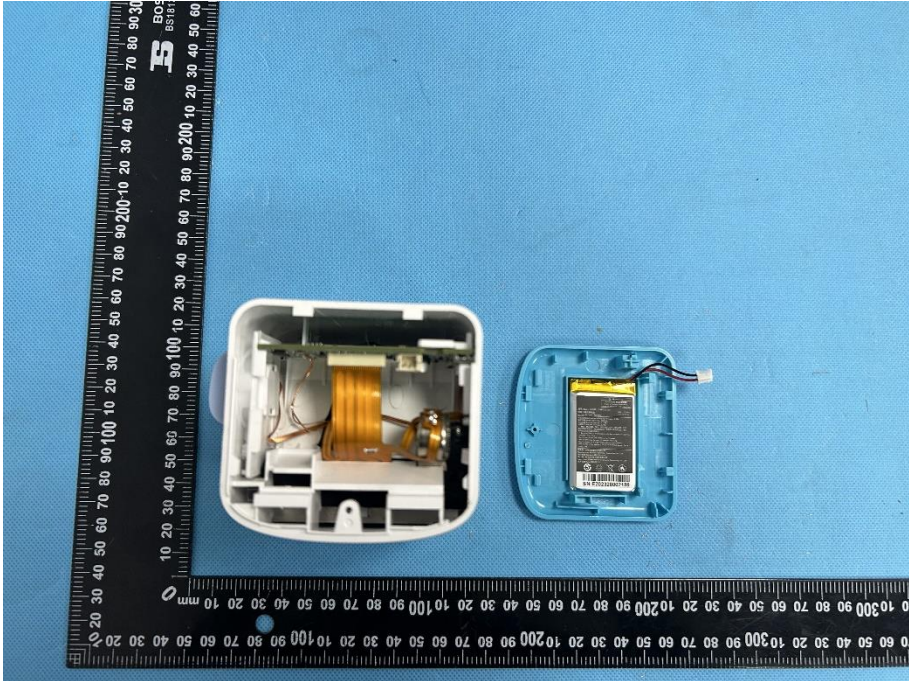
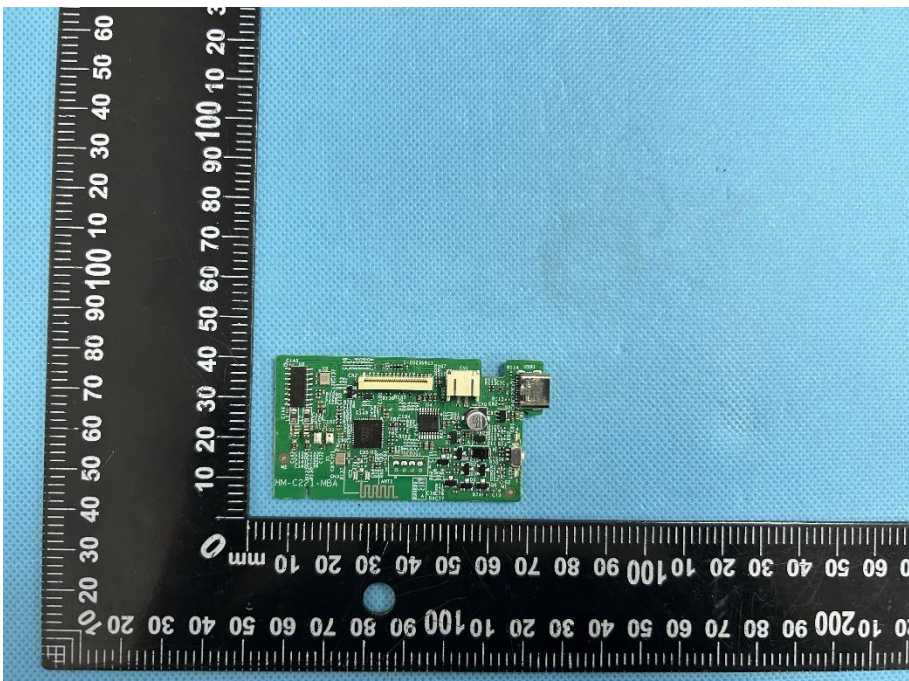
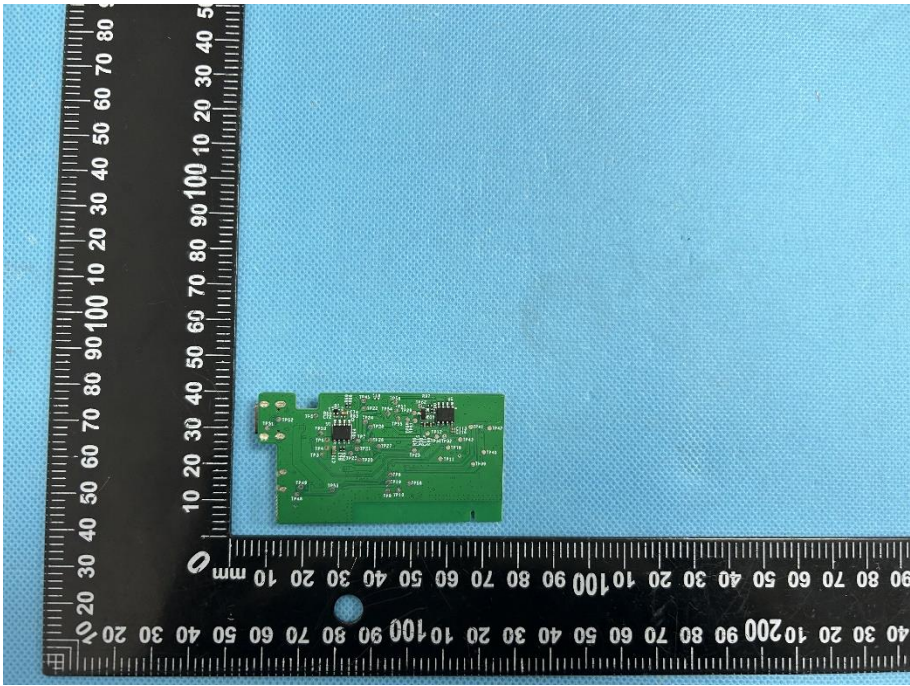
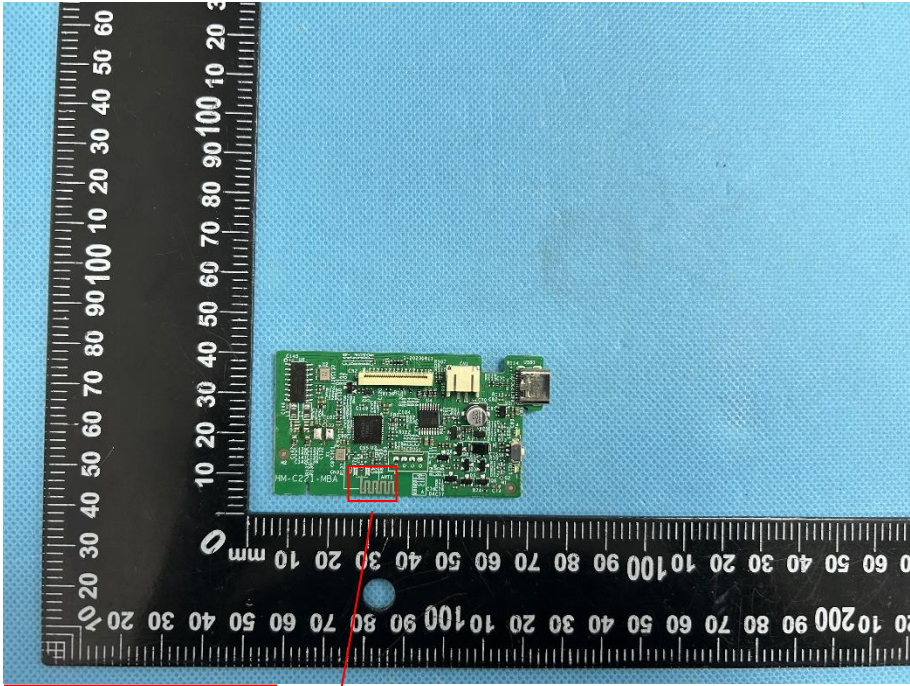
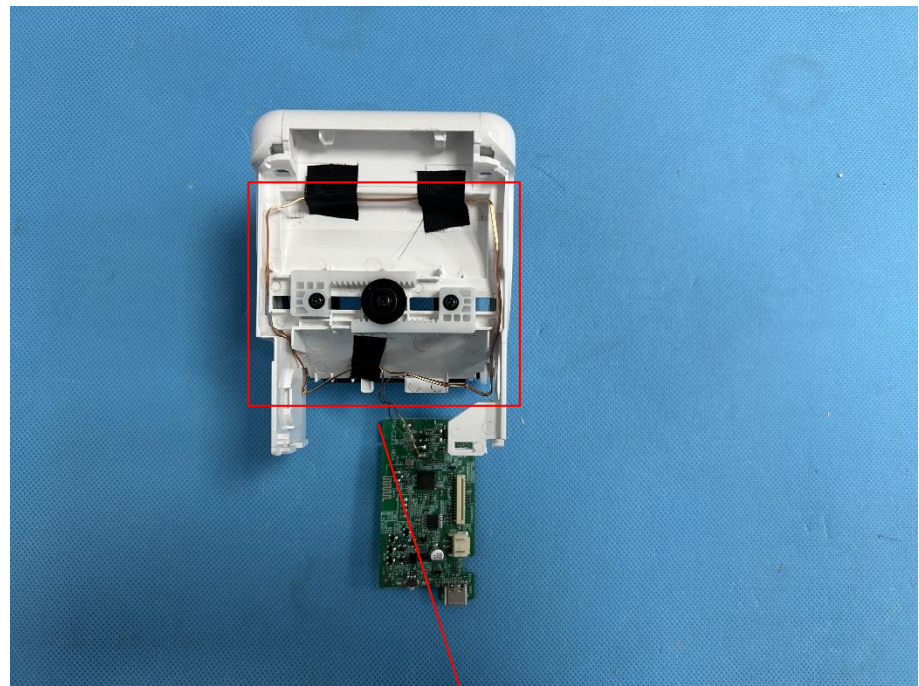


EXHIBIT 3 - EUT INTERNAL PHOTOGRAPHS

<p>EUT Housing and Board View 1</p>	 A photograph showing the internal components of an EUT housing. On the left is a white plastic housing with a yellow antenna and other internal parts. On the right is a blue plastic housing containing a yellow battery. A black ruler with white markings is placed vertically on the left side of the components for scale. The background is a blue textured surface.
<p>Solder Board-Component View 1</p>	 A photograph of a green printed circuit board (PCB) component. The board is populated with various electronic components, including a large black chip, several smaller components, and connectors. A black ruler with white markings is placed vertically on the left side of the board for scale. The background is a blue textured surface.

<p>Solder Board-Component View 2</p>	 <p>A photograph of a small green printed circuit board (PCB) component. The board is rectangular and populated with various electronic components, including a central microcontroller chip and several surface-mount components. The board is placed on a blue textured surface next to a black L-shaped ruler for scale. The ruler shows measurements in millimeters, with the horizontal scale ranging from 0 to 100 mm and the vertical scale from 0 to 80 mm.</p>
<p>Antenna View 1</p>	 <p>A photograph of a larger green PCB component, identified as an antenna. The board is populated with various components, including a microcontroller, a large integrated circuit, and several surface-mount components. A red box highlights a specific component on the board, which is identified as the BT Ant. (Bluetooth Antenna). The board is placed on a blue textured surface next to a black L-shaped ruler for scale. The ruler shows measurements in millimeters, with the horizontal scale ranging from 0 to 100 mm and the vertical scale from 0 to 60 mm.</p> <p>BT Ant.</p>

Antenna View 2



RFID Ant.