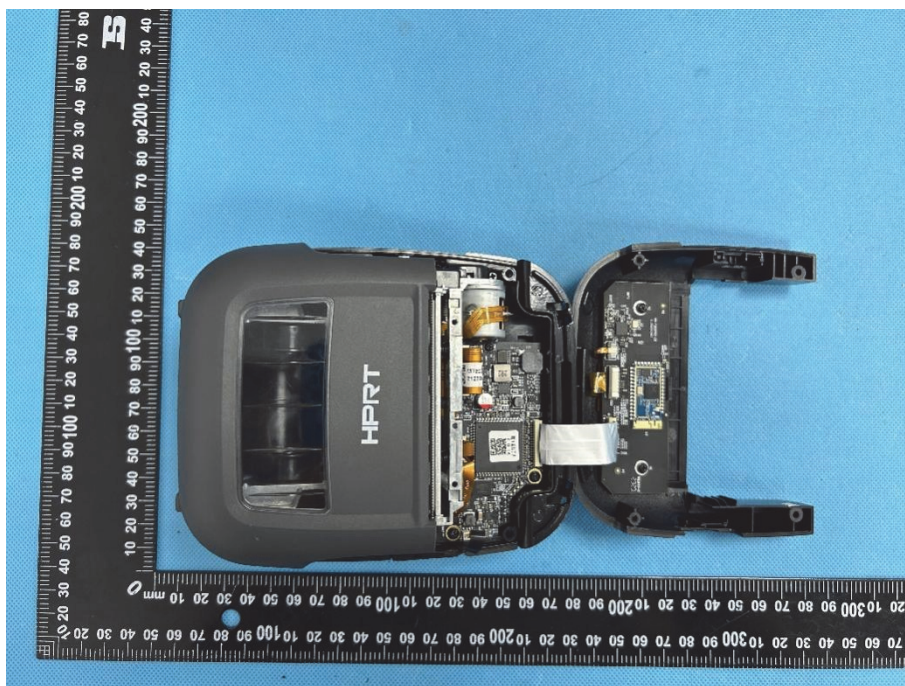


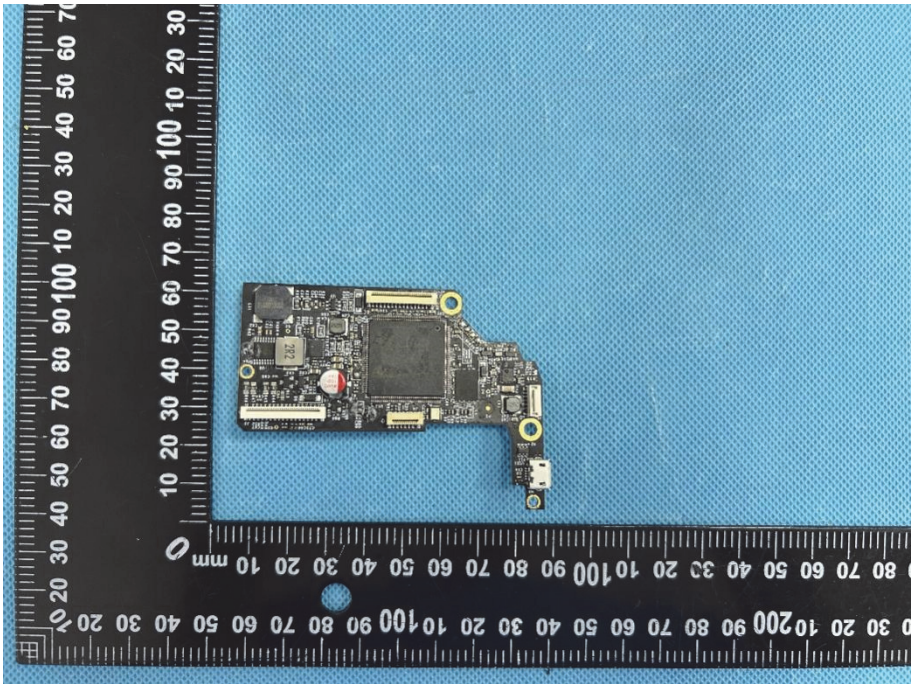
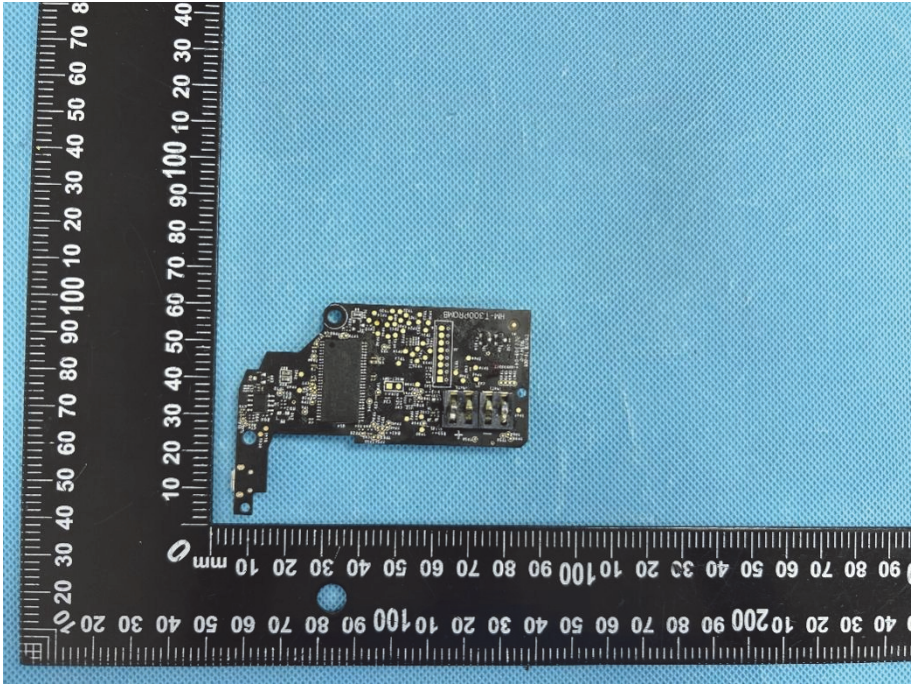
EXHIBIT 3 - EUT INTERNAL PHOTOGRAPHS

EUT Housing and Board View 1



EUT Housing and Board View 2



<p>Solder Board-Component View 1</p>	 <p>A photograph of a small, irregularly shaped printed circuit board (PCB) component. The board is populated with various electronic components, including a large square chip in the center, several smaller surface-mount components, and a red circular component. It features a multi-pin connector on the left side and a USB-like connector on the right. The board is placed on a blue textured surface next to a black L-shaped ruler for scale. The ruler shows measurements in millimeters, with the vertical scale on the left and the horizontal scale at the bottom.</p>
<p>Solder Board-Component View 2</p>	 <p>A photograph of the same PCB component from a different perspective. This view shows the reverse side of the board, revealing the solder joints and the underside of the components. The board is again placed on a blue textured surface next to a black L-shaped ruler for scale, showing the same millimeter measurements as in View 1.</p>

