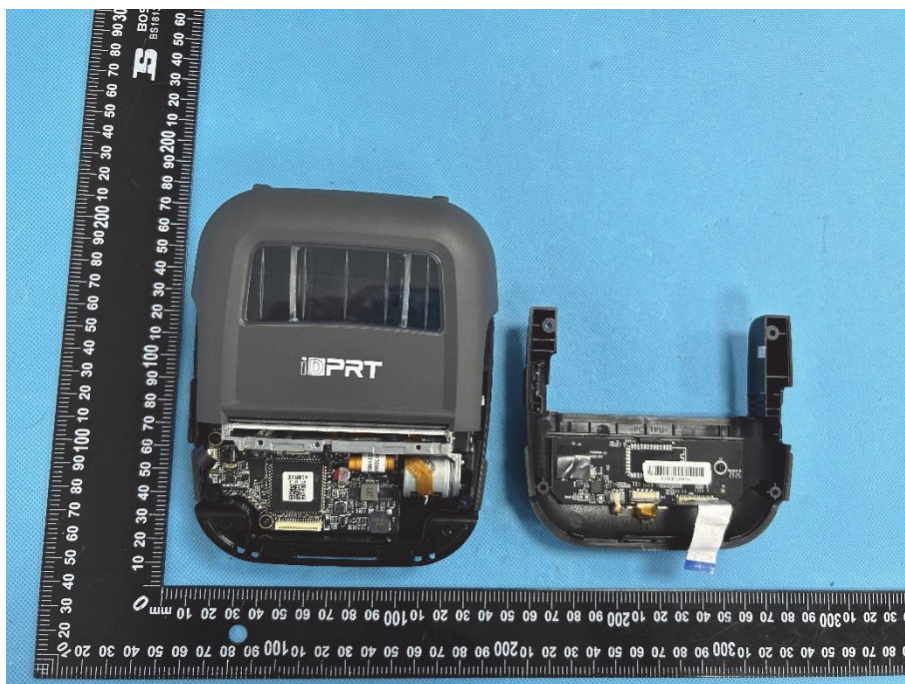


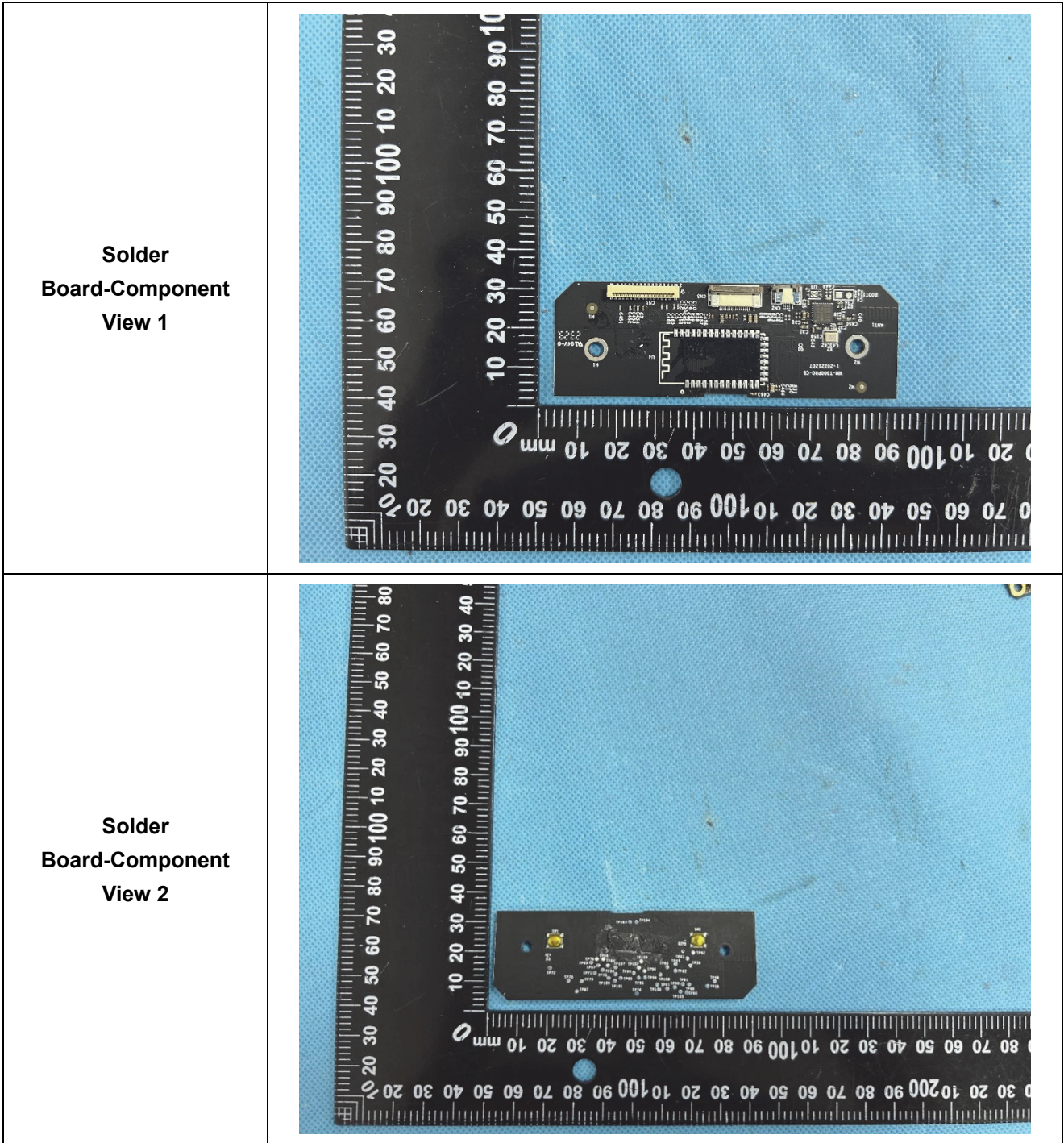
EXHIBIT 3 - EUT INTERNAL PHOTOGRAPHS

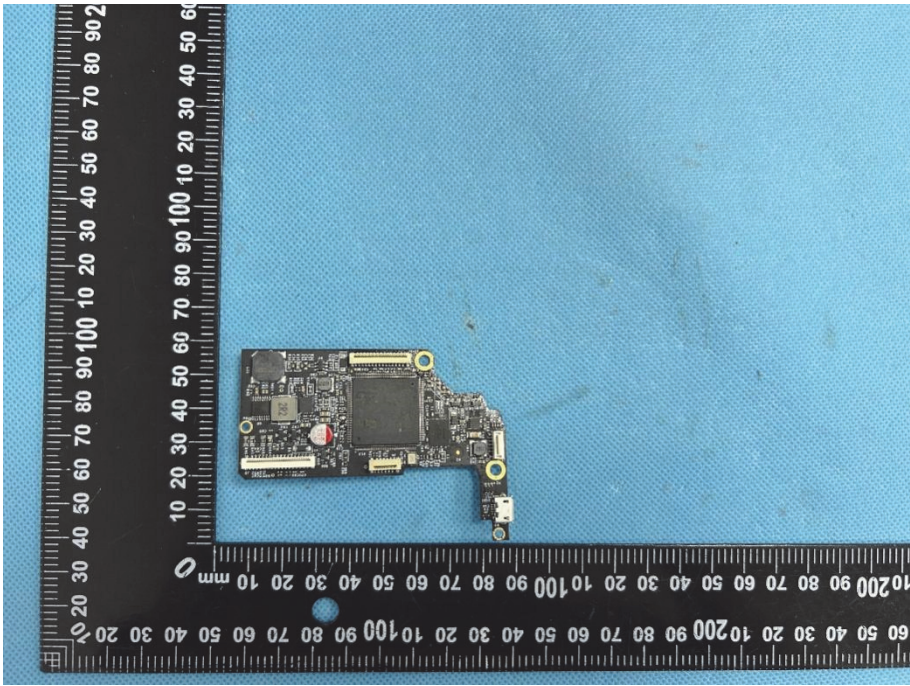
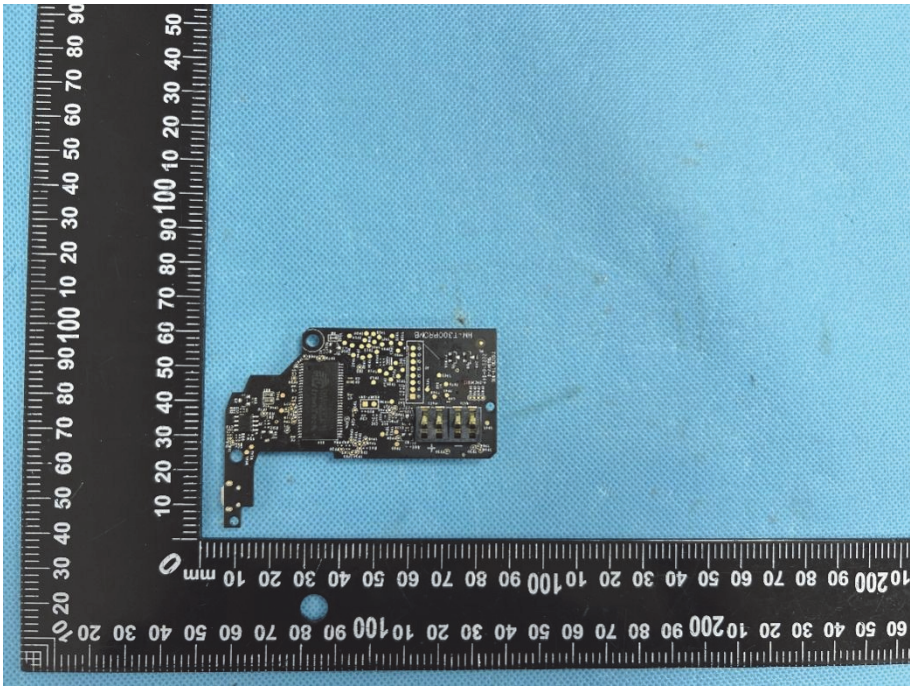
EUT Housing and Board View 1



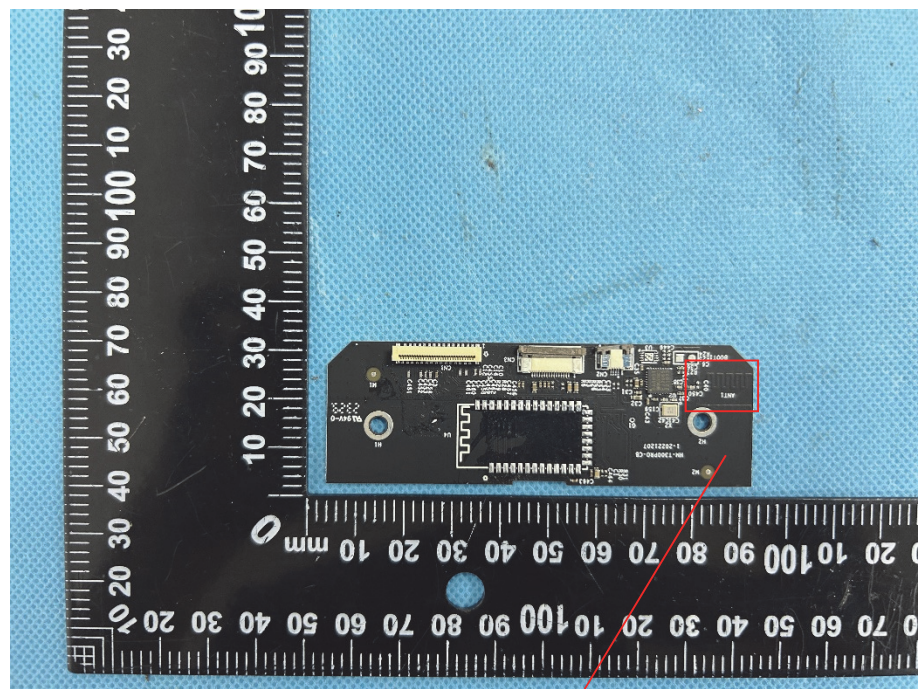
EUT Housing and Board View 2





<p>Solder Board-Component View 3</p>	 A photograph of a small, dark-colored printed circuit board (PCB) component, likely a solder board, placed on a blue textured surface. The component is irregularly shaped with several connectors and components. It is positioned next to a black L-shaped ruler for scale. The ruler has white markings in millimeters, with the horizontal scale at the bottom and the vertical scale on the left. The component is roughly 40mm wide and 30mm high.
<p>Solder Board-Component View 4</p>	 A photograph of the same solder board component from a different perspective, showing the reverse side. The component is placed on the same blue textured surface next to the same black L-shaped ruler. The ruler's horizontal scale is at the bottom and the vertical scale is on the left. The component's shape and size are consistent with View 3, but the components and connectors are visible from the opposite side.

Antenna View



BT Ant.