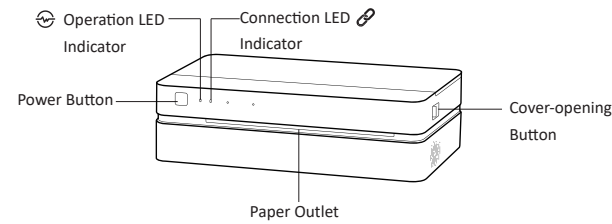
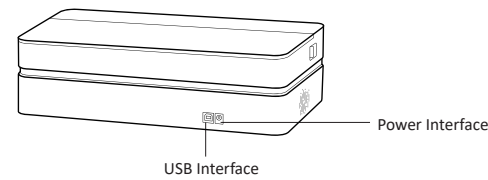


Product Introduction

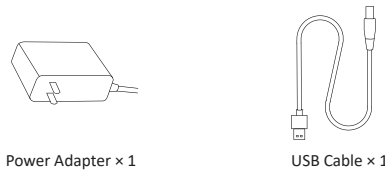
Front View:



Rear View:



Accessories



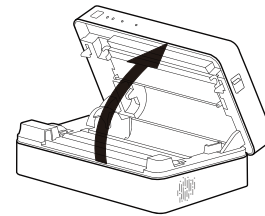
The power adapter varies by local or region.

01

Loading Paper Roll

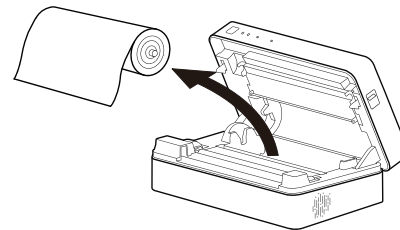
01 Open the top cover

Push the cover-opening buttons on both sides towards the paper outlet to open the top cover.



02 Remove the paper roll

Remove the supplied paper roll and tear it apart along the edge.

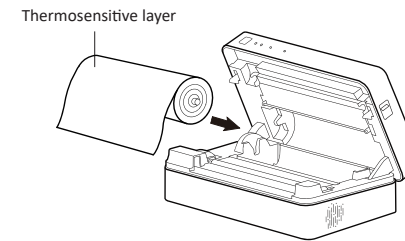


02

Loading Paper Roll

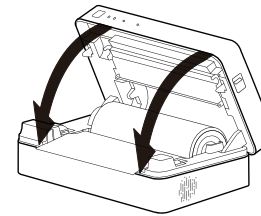
03 Load the paper roll

Load the paper roll to the paper compartment again and pull some extra paper. Pay attention that the thermosensitive layer should face up.



04 Close the top cover

Close the top cover after loading paper. Please make sure both sides click into place.



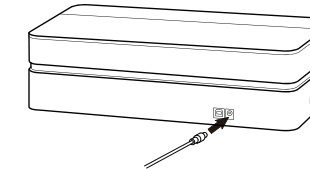
03

Please purchase and use HPRT official thermal paper.

Power On

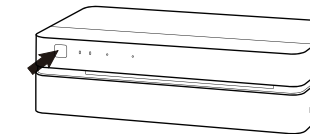
01 Connect the power supply

Plug the power cord into the power interface on the back of the printer.



02 Power On

Hold down the power button for 3 seconds to start the printer.



To turn off the printer, also hold down the power button for 3 seconds.

04

Tips:

All the drawings of product and accessories in the manual are for reference only. Due to the updating and upgrading of the product, there may be some differences between the actual product and the drawings, please refer to the actual product. For more product information, please contact HPRT customer service.

HPRT AI Printer

Product Name: AI Printer	Dimensions: 314 x 159.5 x 92mm
Product Model: FT800	Weight: About 1.8kg (excluded accessories)
Input Parameter: DC 14V/3A	Operating Temperature: 0°C~40°C
Executive Standard: GB4943.1-2011, GB/T9254-2008, GB 17625.1-2012	
Wi-Fi Connection: Wi-Fi IEEE 802.11b/g/n 2.4GHz	

Manufacturer: Xiamen Hanin Electronic Technology Co.,Ltd.
Add: 5F, 8#, Aide Airport Industrial Park, Huli District, Xiamen, China
Tel: +86-(0)592-5885991
Web: www.hpert.com
Product Homepage: ft.hpert.com

Printing Wirelessly from Mobile Phone

01 Download App

Scan the QR code below to download “H-Print” App.



02 Connect to printer via Wi-Fi

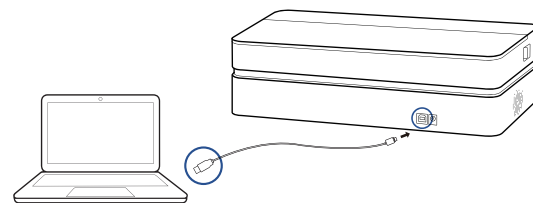
- 1 Connect the mobile phone to Wi-Fi hotspot (select 2.4 GHz frequency band);
- 2 Open “H-Print” App, click “+” in the top right corner of Home to add the device;
- 3 Select FT series according to the guide of App;
- 4 Enter the Wi-Fi password;
- 5 Scan the QR code on the bottom of the printer and wait for the printer to complete Wi-Fi connection.

03 Cloud Remote Printing

- 1 The printer is on and the connected Wi-Fi hotspot can access the Internet;
- 2 Even when the printer is not around you, you can still choose the file to print via “H-Print” App. After entering the print preview, send the data to the printer through remote printing.

Printing from Windows PC

- 1 Connect one side of the USB cable to the PC and the other side to the printer;
- 2 Turn on the printer;
- 3 Download the driver program from HPRT website and install it in the PC;
- 4 Add the printer to the PC and print the documents from PC after establishing the connection.



Precautions

- 1 The best operating temperature is 0°C~40°C, if the environmental temperature is too low or too high, the print quality may be affected.
- 2 Please do not use the unofficial adaptor or paper roll to ensure the print quality.
- 3 During printing, the area around the thermal print head is very hot. Do not touch it, as you could be burned.
- 4 Do not pull out the paper by force during printing, or else it may damage the printer.
- 5 This is a Class A product. In a domestic environment this product may cause radio interference in which the user may be required to take adequate measures.

LED Indicator and Buzzer Definitions

01 Operation LED indicator, which shows the printer status itself

1 Error Status

Status	LED Indicator	Buzzer
Print head temperature is too high	Red LED flashes rapidly	“Beep-beep beep-”
Out of paper	Red LED flashes slowly	“Beep beep beep-”
Cutter jam	Red LED flashes rapidly	“Beep-beep-beep-”
RFID error	Red LED flashes slowly	--- ---
Printer cover is not closed	Red LED is lighting	--- ---

2 Printer Status

Status	LED Indicator
Power on	White LED is lighting
Power off	Light off
Printing	White LED flashes slowly
Firmware update	Red, green and blue LED flashes alternately

02 Connection LED indicator, which shows the connection status of printer

Status	LED Indicator
In Wi-Fi connection	White LED is lighting
Wi-Fi data receiving	White LED flashes rapidly
In USB connection	Green LED is lighting
USB data receiving	Green LED flashes rapidly
No connection currently	Light off

FCC WARNING

This device complies with part 15 of the FCC Rules. Operation is subject to the following two conditions: (1) this device may not cause harmful interference, and (2) this device must accept any interference received, including interference that may cause undesired operation.

Any changes or modifications not expressly approved by the party responsible for compliance could void the user's authority to operate the equipment.

NOTE: This equipment has been tested and found to comply with the limits for a Class B digital device, pursuant to Part 15 of the FCC Rules. These limits are designed to provide reasonable protection against harmful interference in a residential installation. This equipment generates, uses and can radiate radio frequency energy and, if not installed and used in accordance with the instructions, may cause harmful interference to radio communications.

However, there is no guarantee that interference will not occur in a particular installation. If this equipment does cause harmful interference to radio or television reception, which can be determined by turning the equipment off and on, the user is encouraged to try to correct the interference by one or more of the following measures:

- Reorient or relocate the receiving antenna.
- Increase the separation between the equipment and receiver.
- Connect the equipment into an outlet on a circuit different from that to which the receiver is connected.
- Consult the dealer or an experienced radio/TV technician for help.

To maintain compliance with FCC's RF Exposure guidelines, This equipment should be installed and operated with minimum distance between 20cm the radiator your body: Use only the supplied antenna.

