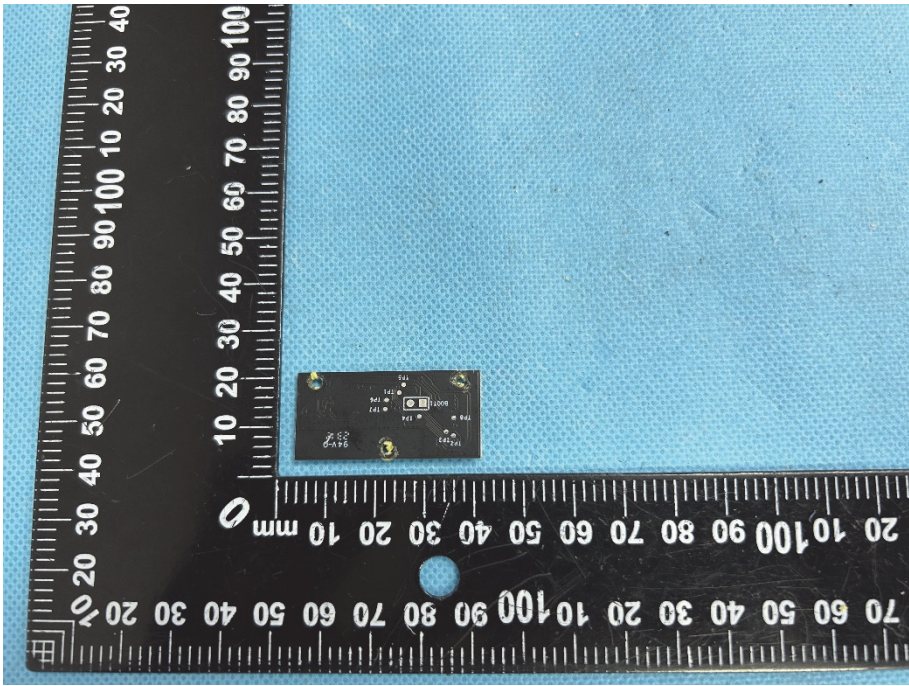
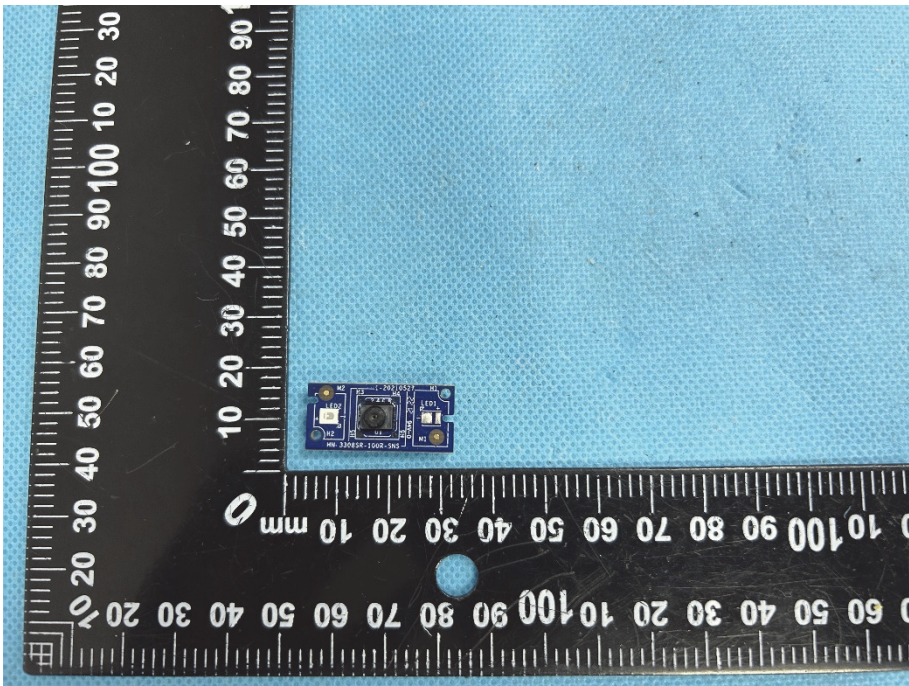
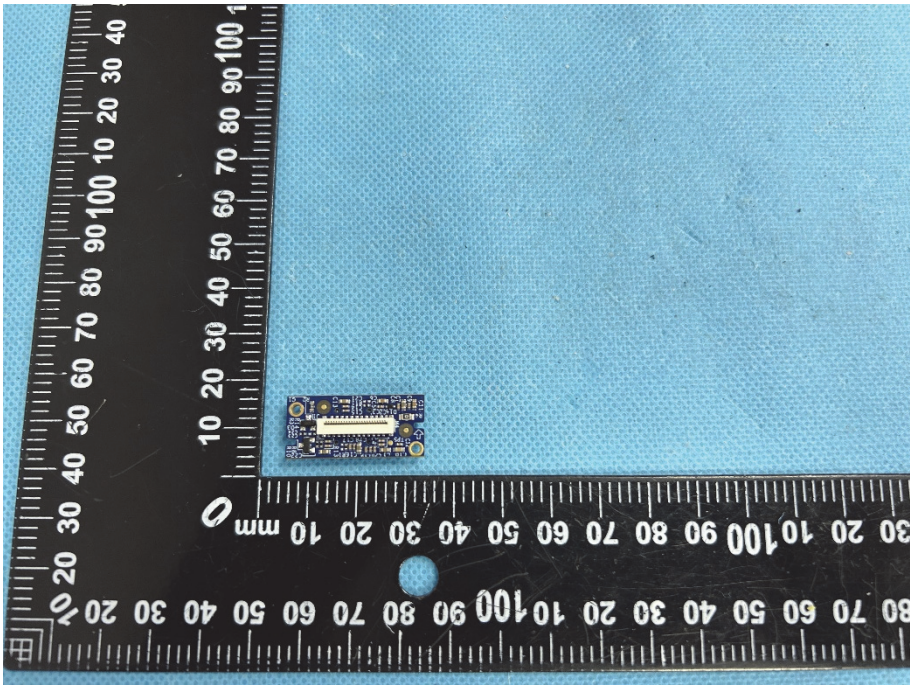
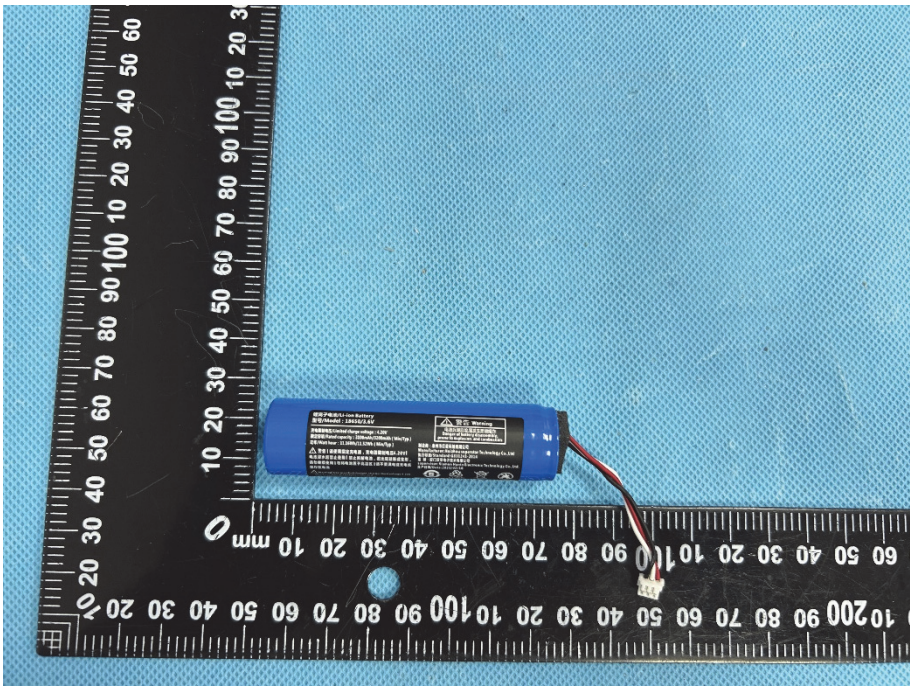
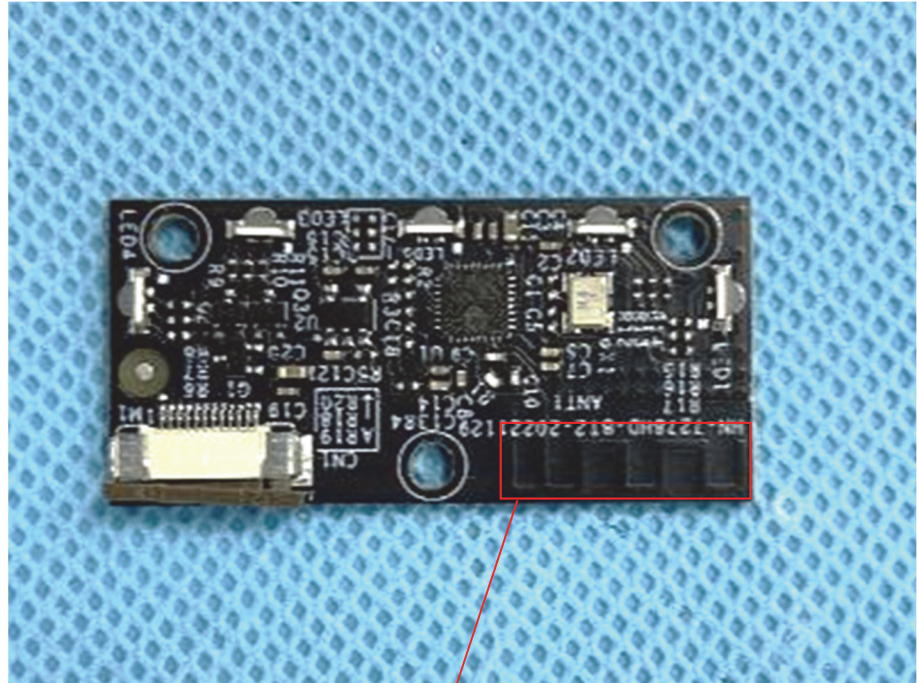


<p>Solder Board-Component View 8</p>	 <p>A photograph of a small, dark-colored solder board component. The component is rectangular with several gold-colored solder pads and a central square component. It is placed on a blue textured surface. A black L-shaped ruler is positioned around the component for scale, with markings in millimeters. The ruler shows the component is approximately 10mm wide and 10mm high.</p>
<p>Solder Board-Component View 9</p>	 <p>A photograph of a small, blue-colored solder board component. The component is rectangular with several gold-colored solder pads and a central square component. It is placed on a blue textured surface. A black L-shaped ruler is positioned around the component for scale, with markings in millimeters. The ruler shows the component is approximately 10mm wide and 10mm high.</p>

<p>Solder Board-Component View 10</p>	
<p>Solder Board-Component View 11</p>	

Antenna View



BT Ant.