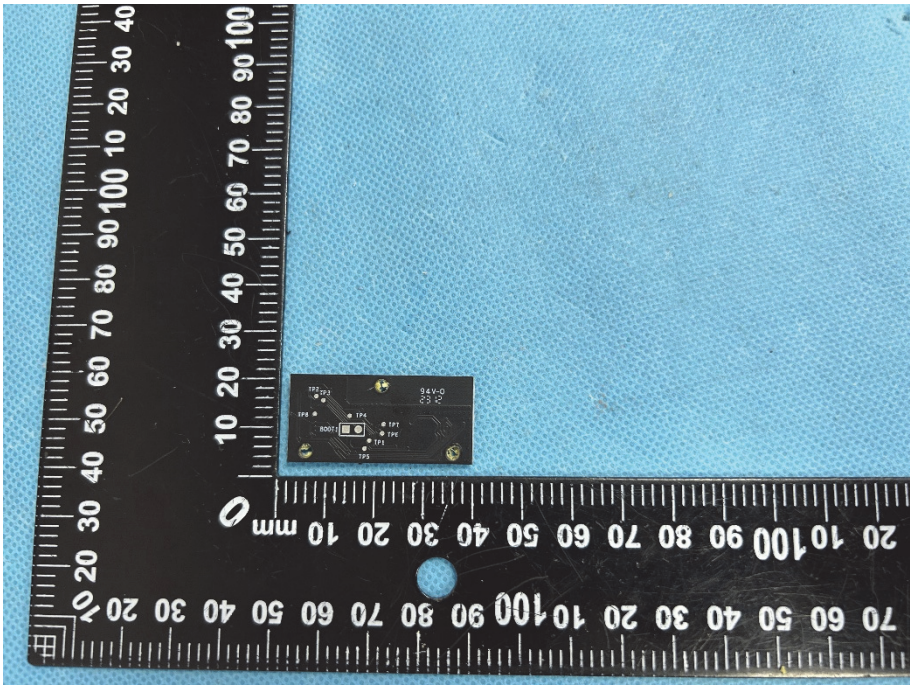
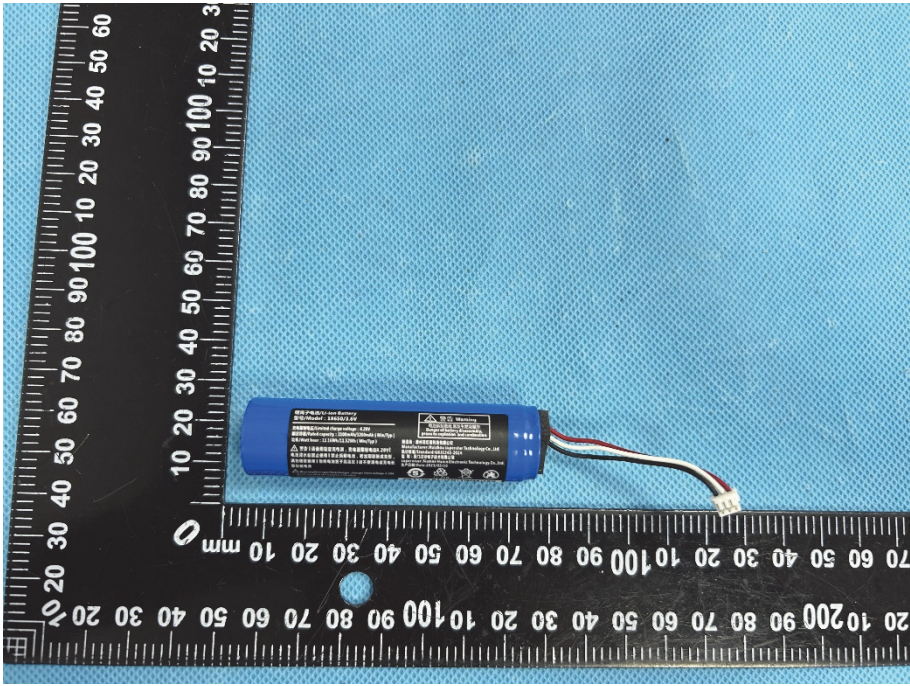


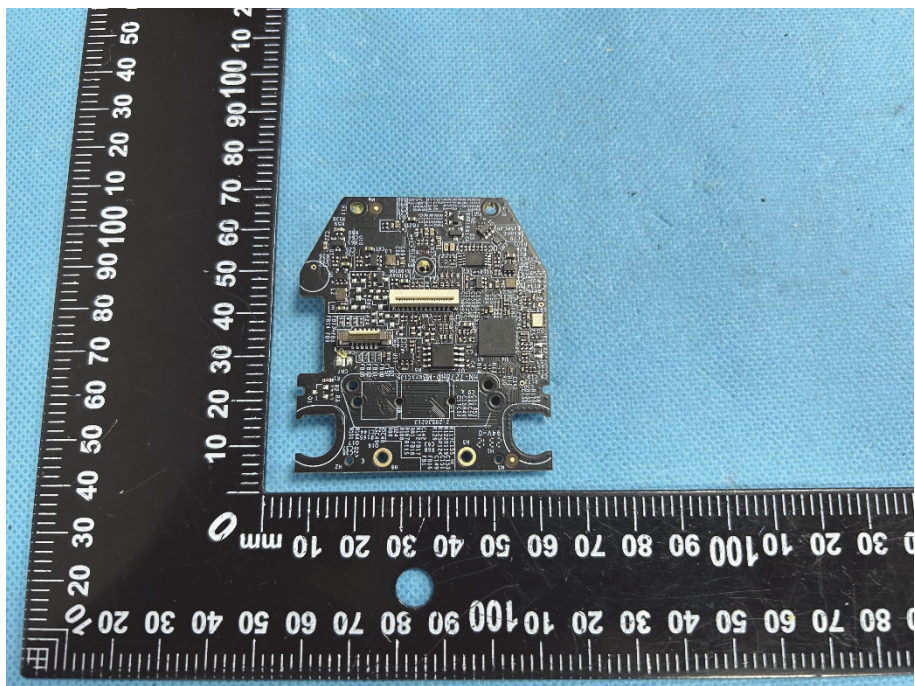
<p>Solder Board-Component View 10</p>	 <p>A photograph of a small, square, black solder board component. The component has several gold-colored pads and components on its surface, including a small integrated circuit (IC) labeled 'TP202', a resistor labeled '24KΩ 2510', and other components labeled 'TP4', 'TP7', 'TP1', and 'TP5'. The component is placed on a blue textured surface next to a black ruler with white markings. The ruler shows measurements in millimeters, with the component positioned between the 10mm and 100mm marks.</p>
<p>Solder Board-Component View 11</p>	 <p>A photograph of a blue cylindrical battery component with a white label. The label contains technical specifications and safety warnings. Three wires (red, white, and black) are connected to the battery. The component is placed on a blue textured surface next to a black ruler with white markings. The ruler shows measurements in millimeters, with the component positioned between the 10mm and 100mm marks.</p>

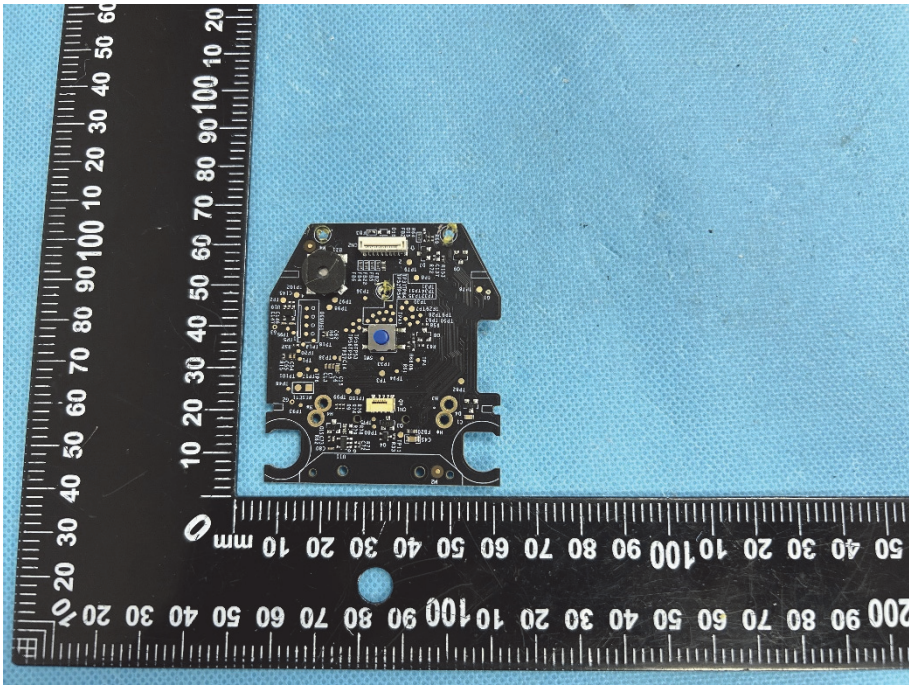
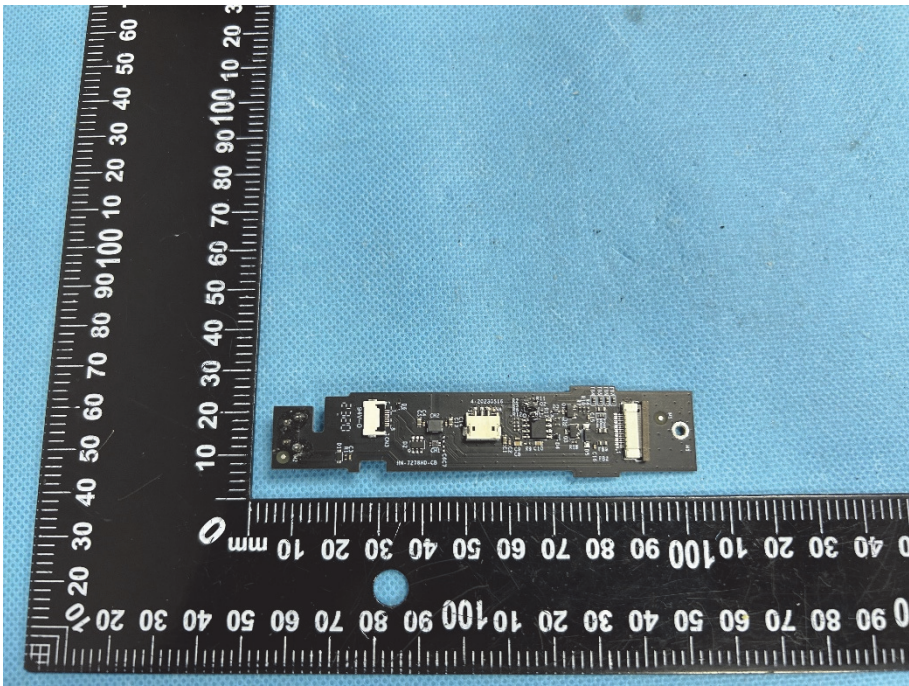
Model: HN-3578SR

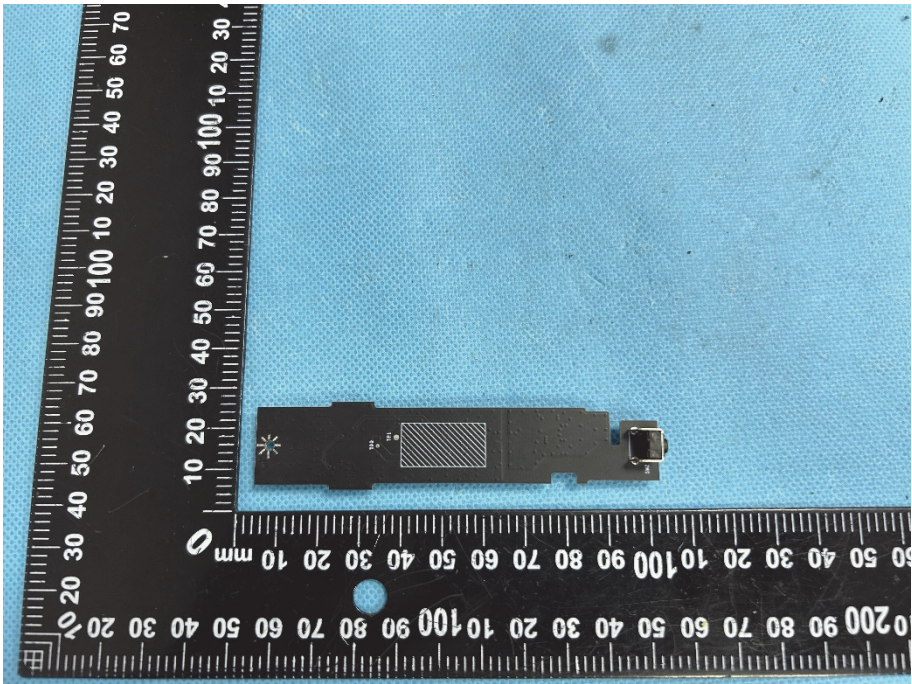
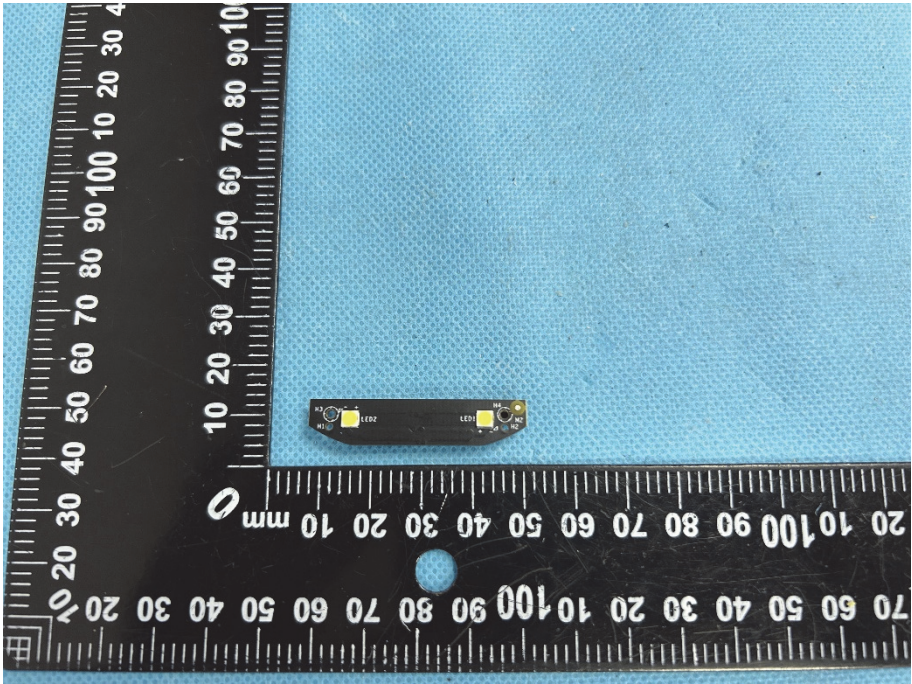
EUT Housing and Board View 1

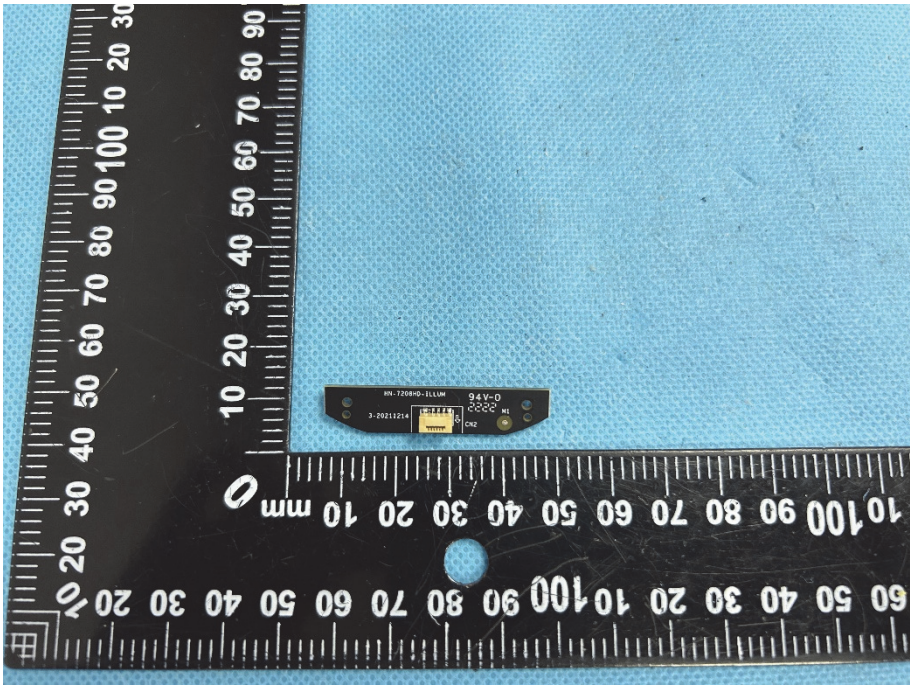
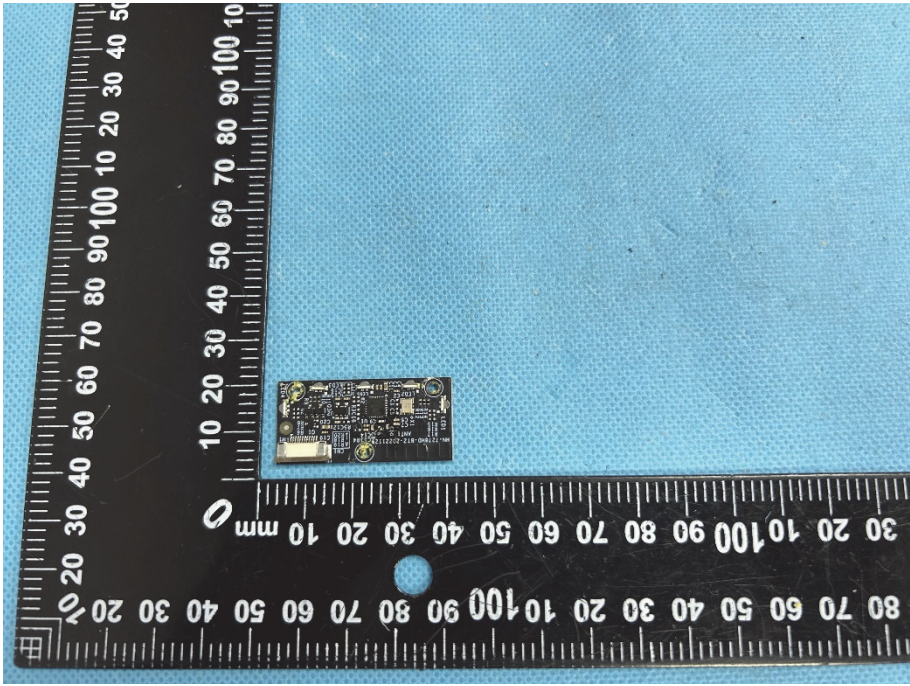


Solder Board-Component View 1



<p>Solder Board-Component View 2</p>	 A photograph of a small, dark-colored printed circuit board (PCB) component. The board is irregularly shaped with several circular and rectangular cutouts. It is populated with various electronic components, including integrated circuits, resistors, and capacitors. The board is placed on a blue textured surface next to a black L-shaped ruler for scale. The ruler has white markings in millimeters and centimeters.
<p>Solder Board-Component View 3</p>	 A photograph of the same PCB component from a different perspective. This view shows the underside of the board, highlighting the solder joints and the placement of components. The board is again placed on a blue textured surface next to a black L-shaped ruler for scale.

<p>Solder Board-Component View 4</p>	 A photograph of a small, dark, rectangular solder board component. The component has a star-shaped logo on the left side, a central square area with a grid pattern, and a small connector on the right. It is placed on a blue textured surface next to a black L-shaped ruler with white markings in millimeters. The ruler shows the component is approximately 100mm long and 20mm wide.
<p>Solder Board-Component View 5</p>	 A photograph of the same solder board component from a different angle. This view shows two yellow LED components on the board, each with a small circular lens. The component is placed on the same blue textured surface next to the same black L-shaped ruler. The ruler indicates the component is approximately 100mm long and 20mm wide.

<p>Solder Board-Component View 6</p>	 <p>A photograph of a small, rectangular solder board component. The component is dark with a yellow label that reads "HL-7208D-ELLUM 9.4V-D 2000 M1 3-20211214 CHZ". It is placed on a blue textured surface next to a black L-shaped ruler with white markings in millimeters. The ruler shows the component is approximately 10mm wide and 20mm long.</p>
<p>Solder Board-Component View 7</p>	 <p>A photograph of the same solder board component from a different angle. The component is dark with a yellow label that reads "HL-7208D-ELLUM 9.4V-D 2000 M1 3-20211214 CHZ". It is placed on a blue textured surface next to a black L-shaped ruler with white markings in millimeters. The ruler shows the component is approximately 10mm wide and 20mm long.</p>