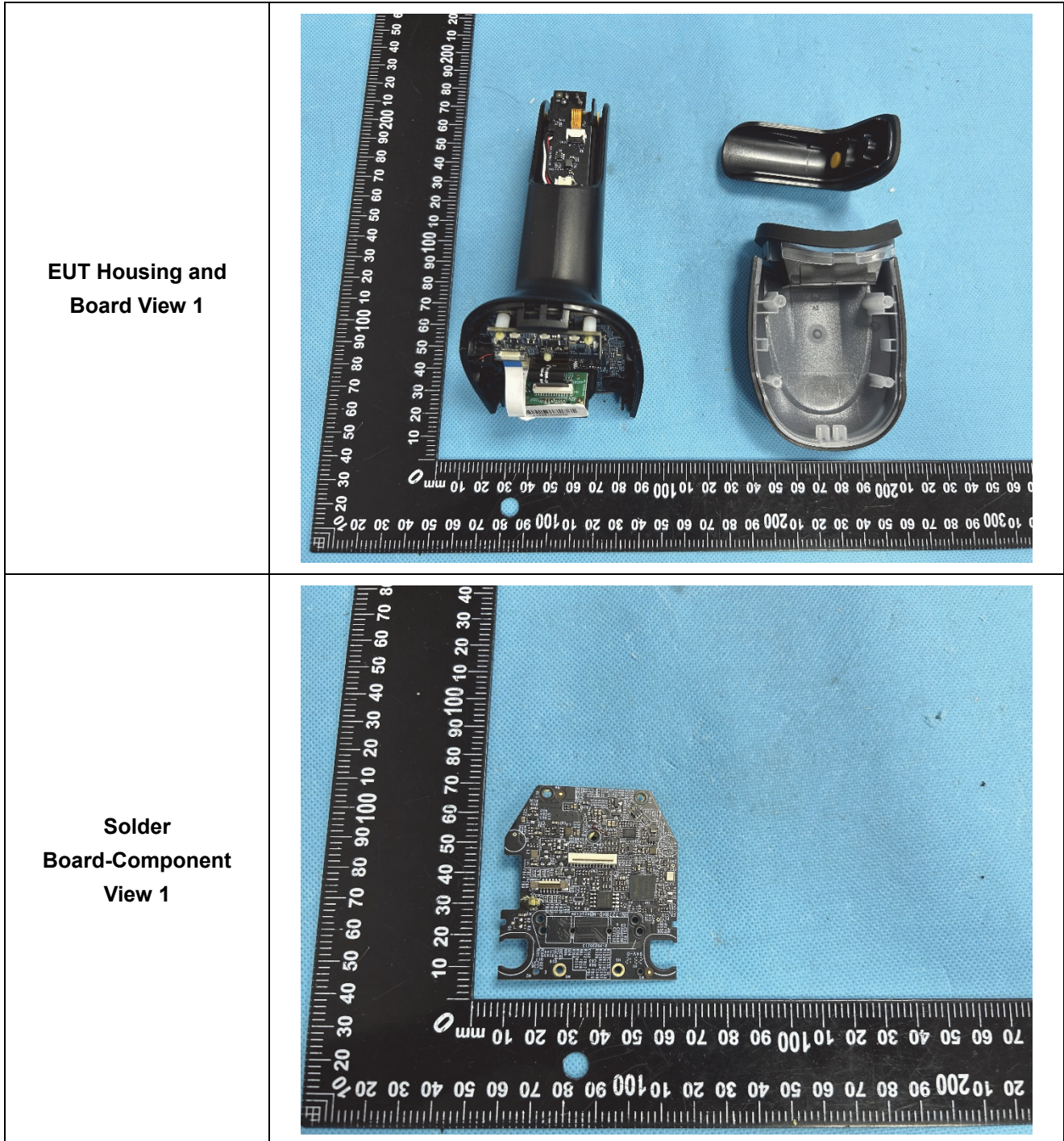
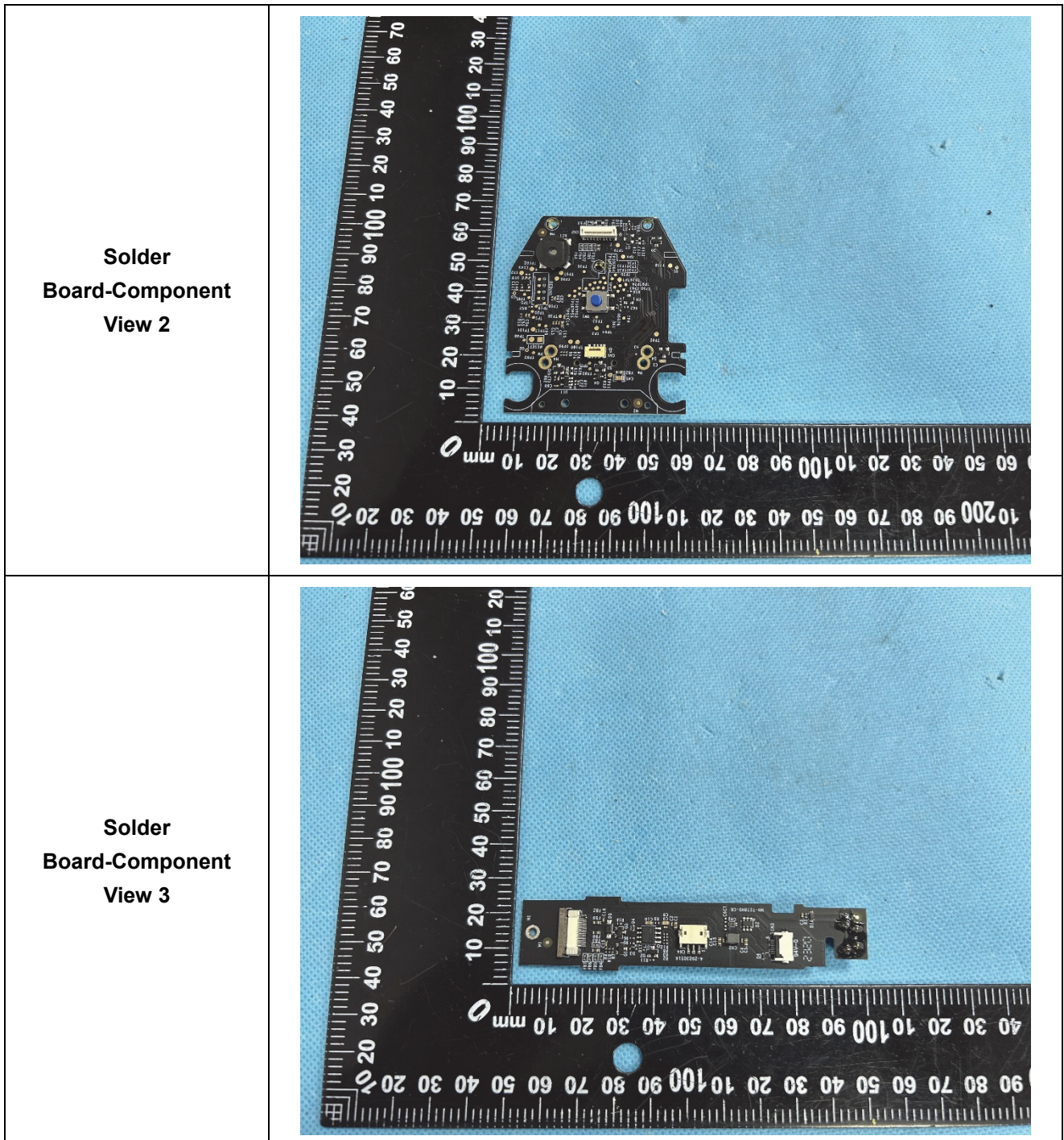
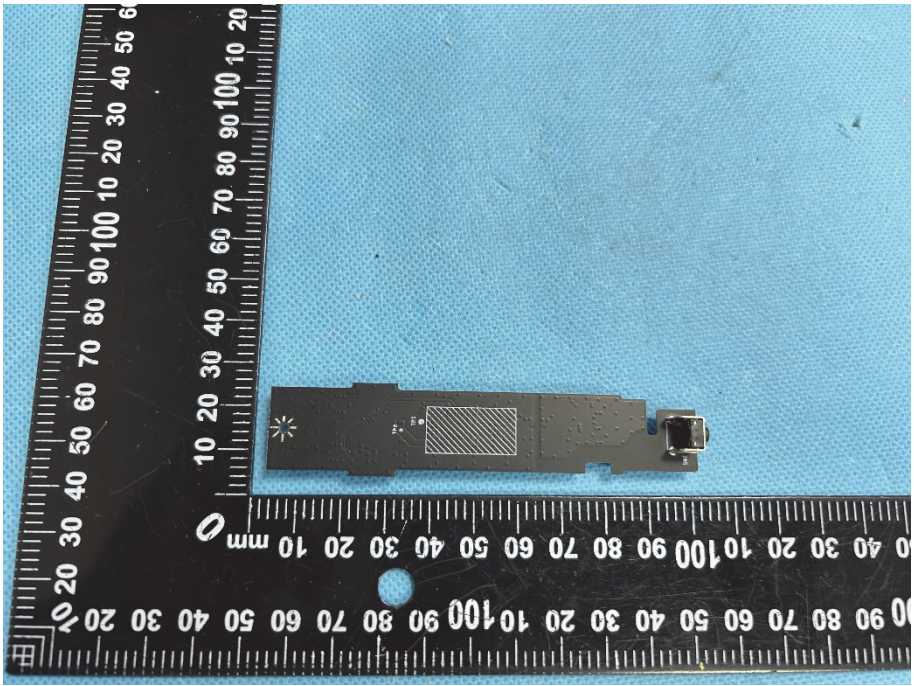
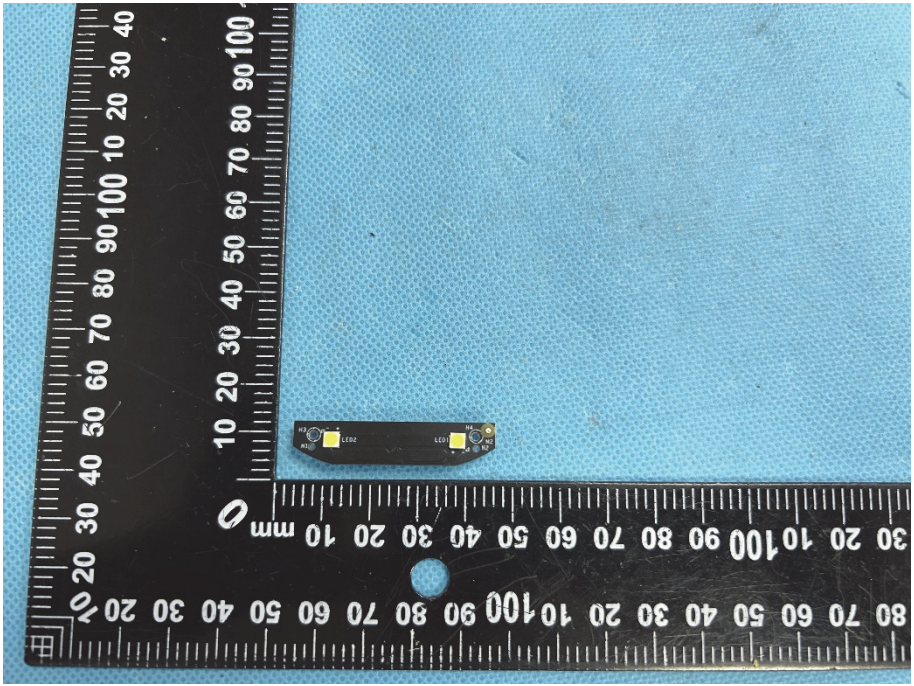


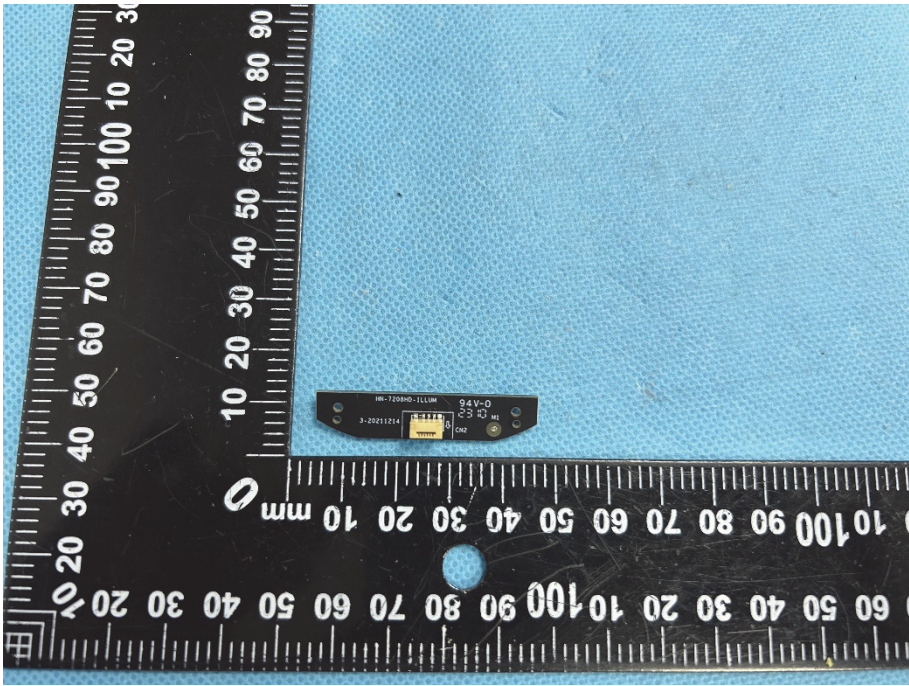
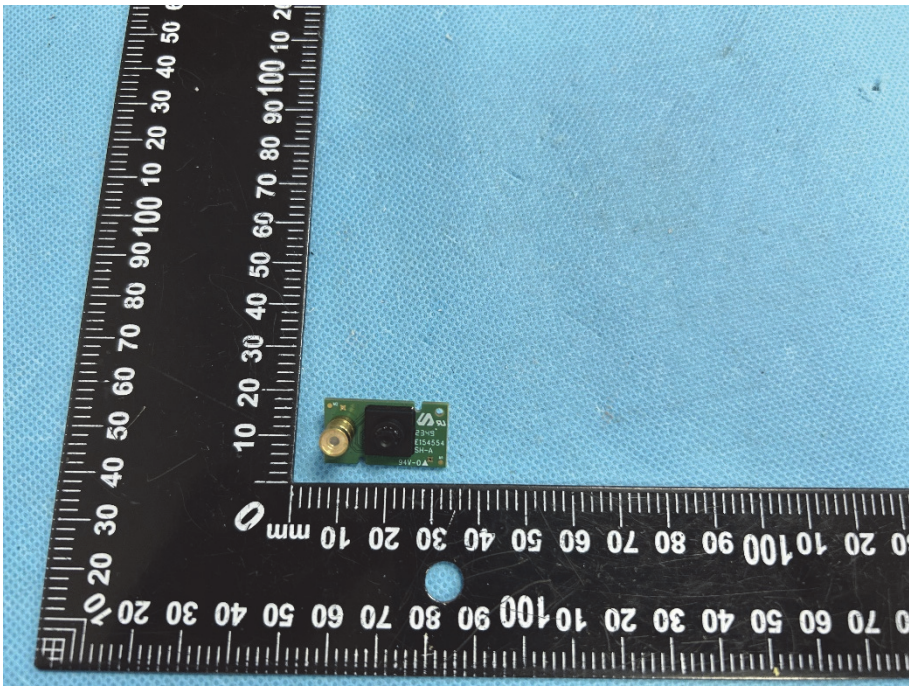
EXHIBIT 3 - EUT INTERNAL PHOTOGRAPHS

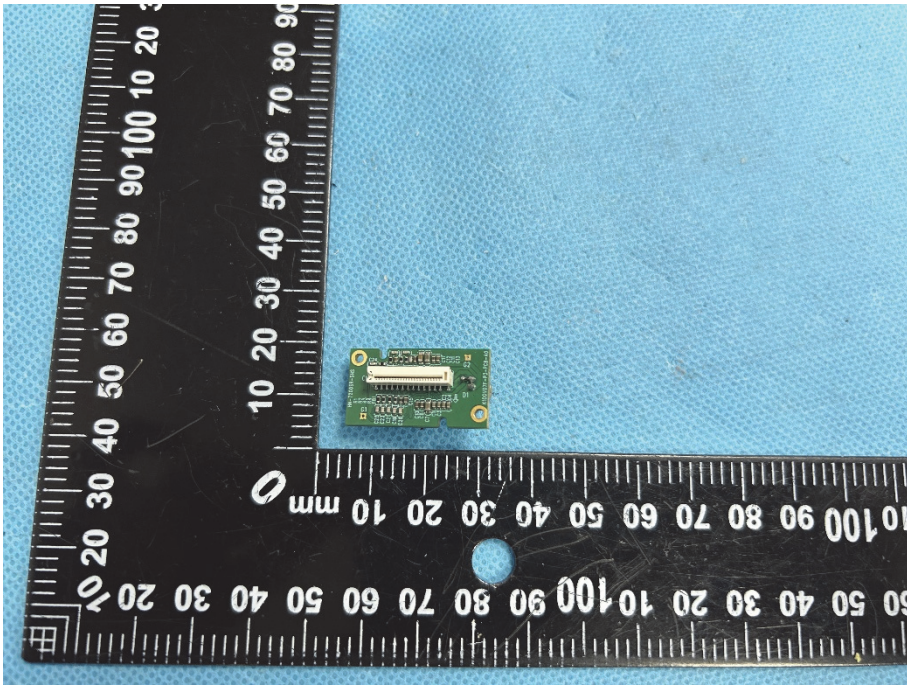
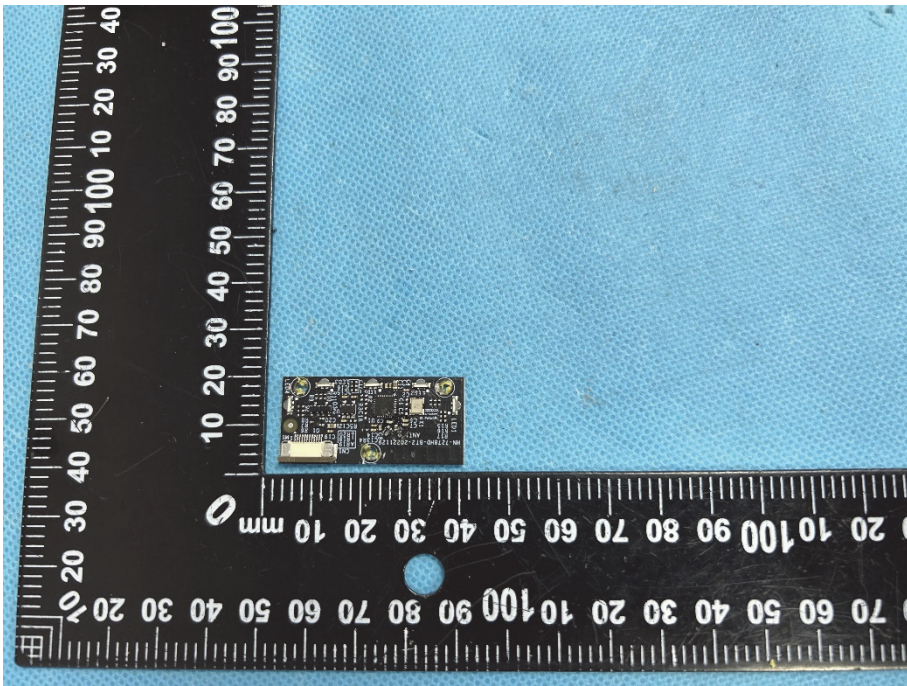
Model: HN-7278HD





<p>Solder Board-Component View 4</p>	 <p>A photograph of a small, dark, rectangular solder board component. The component is positioned horizontally on a blue textured surface. A black L-shaped ruler is placed to the left and below the component for scale. The ruler has white markings in millimeters and centimeters. The component features a star-shaped logo on the left side, a rectangular area with a grid pattern in the center, and a small, dark, rectangular component on the right side. The ruler shows the component is approximately 100 mm long and 20 mm wide.</p>
<p>Solder Board-Component View 5</p>	 <p>A photograph of the same solder board component from a different perspective. The component is positioned horizontally on a blue textured surface. A black L-shaped ruler is placed to the left and below the component for scale. The ruler has white markings in millimeters and centimeters. The component features two small, yellow, rectangular components on the top surface, each labeled 'LED'. The ruler shows the component is approximately 100 mm long and 20 mm wide.</p>

<p>Solder Board-Component View 6</p>	 A photograph of a small, black, rectangular solder board component. The component has a gold-colored connector on the left side and several small components on the right side. It is placed on a blue textured surface next to a black L-shaped ruler with white markings in millimeters. The ruler shows the component is approximately 10 mm wide and 20 mm long.
<p>Solder Board-Component View 7</p>	 A photograph of a small, green, rectangular solder board component. The component has a gold-colored connector on the left side and a black component on the right side. It is placed on a blue textured surface next to a black L-shaped ruler with white markings in millimeters. The ruler shows the component is approximately 10 mm wide and 10 mm long.

<p>Solder Board-Component View 8</p>	 A photograph of a small green printed circuit board (PCB) component. The component is rectangular and features a gold-plated edge connector. It is positioned on a blue textured surface. A black L-shaped ruler is placed next to it for scale, with markings in millimeters. The ruler shows the component is approximately 15 mm wide and 10 mm high.
<p>Solder Board-Component View 9</p>	 A photograph of a small black printed circuit board (PCB) component. The component is rectangular and features a gold-plated edge connector. It is positioned on a blue textured surface. A black L-shaped ruler is placed next to it for scale, with markings in millimeters. The ruler shows the component is approximately 15 mm wide and 10 mm high.