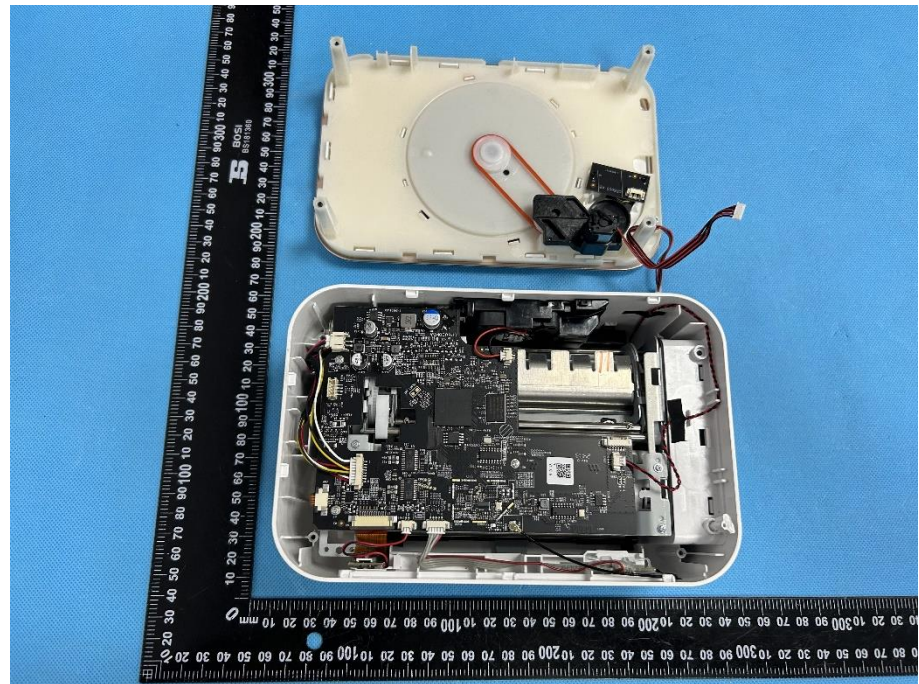
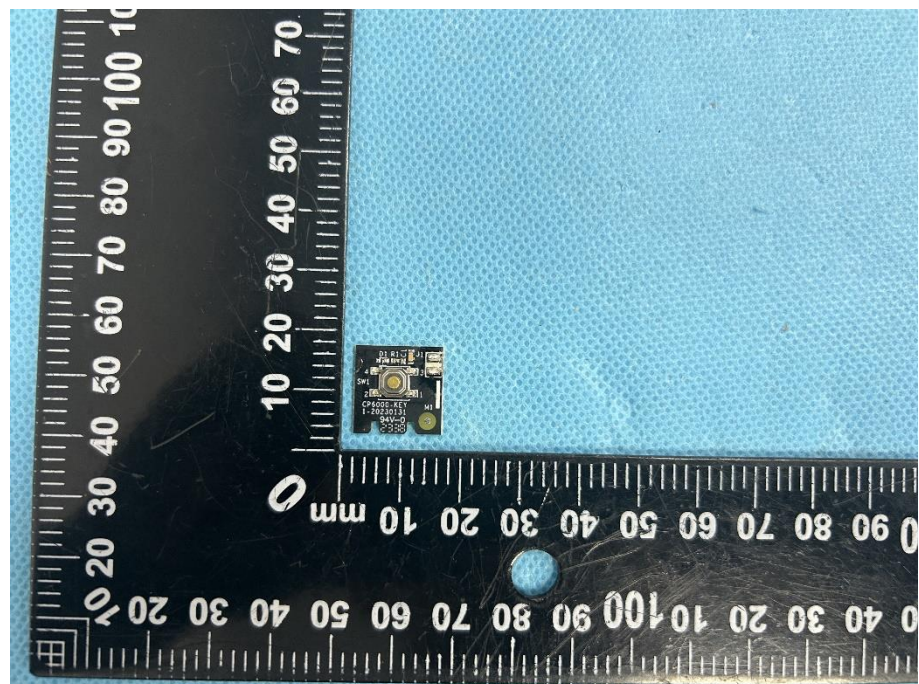


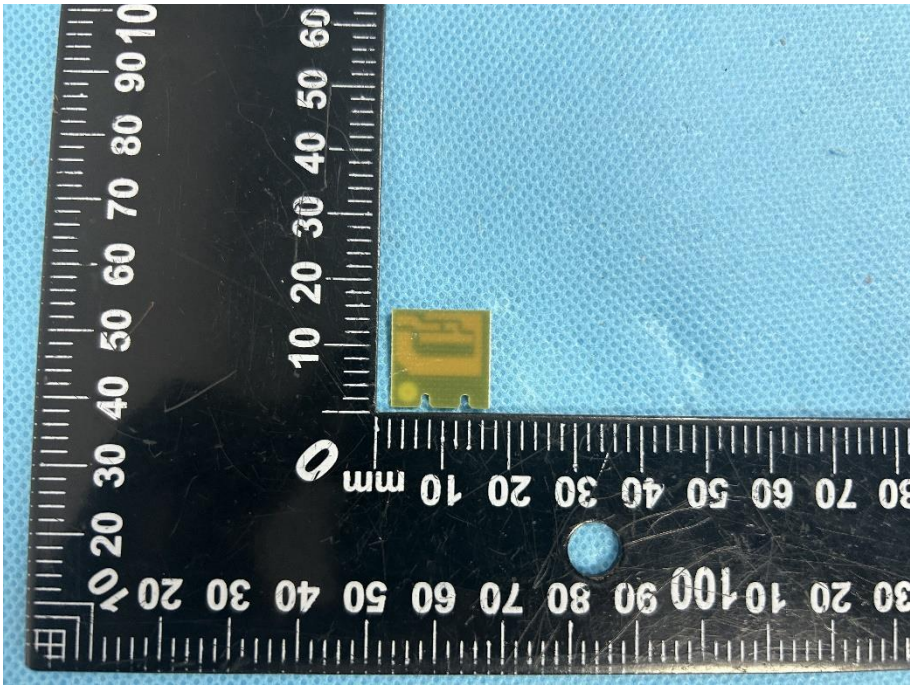
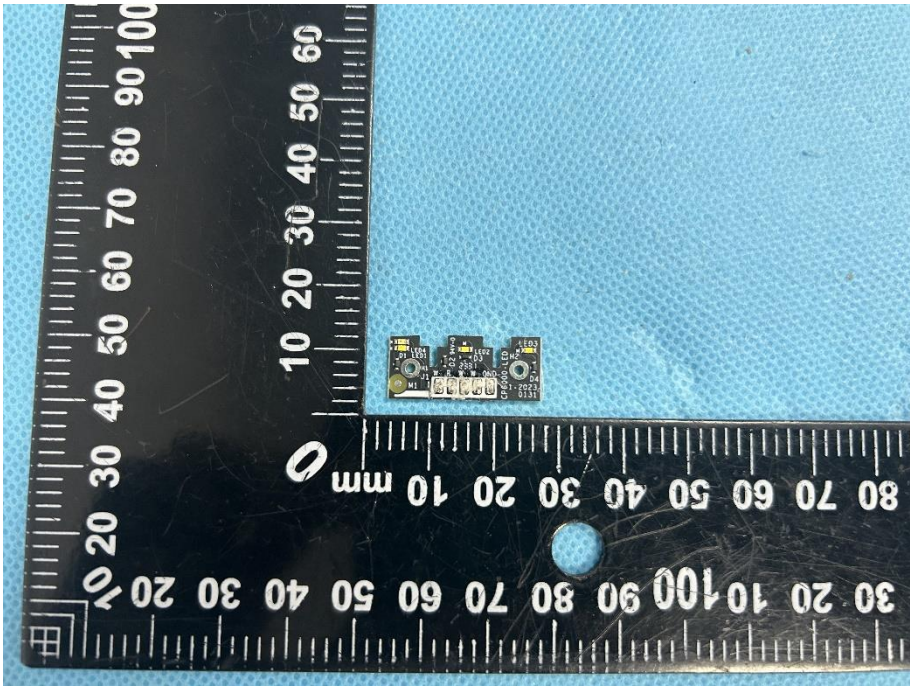
EXHIBIT 3 - EUT INTERNAL PHOTOGRAPHS

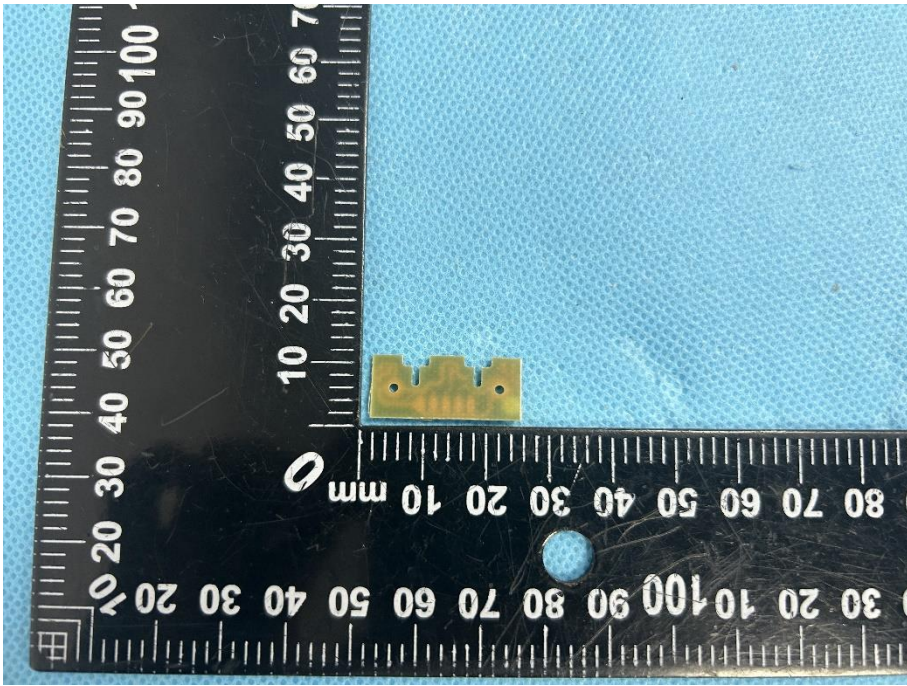
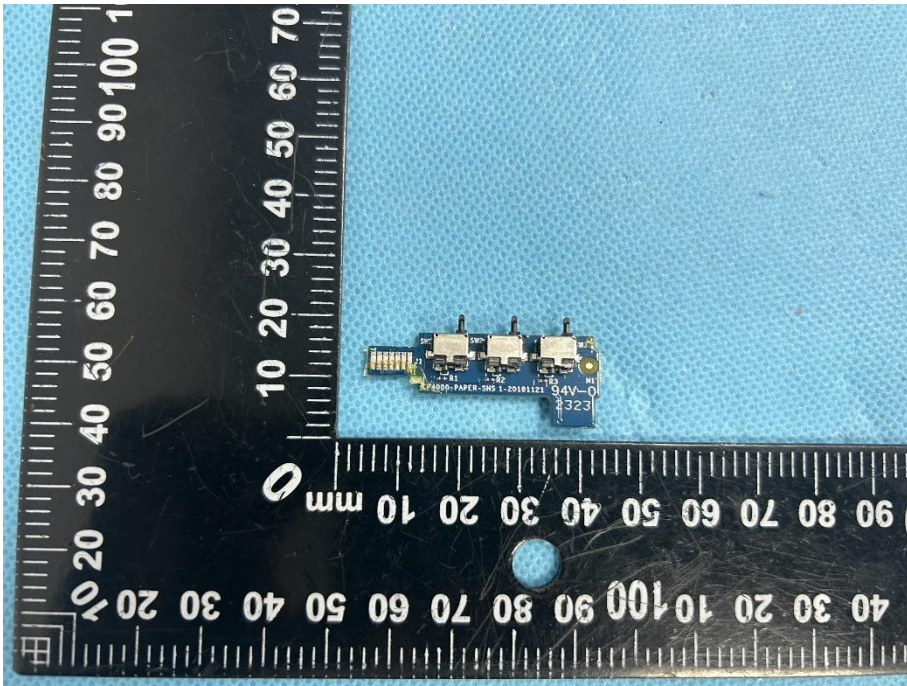
EUT Housing and Board View 1

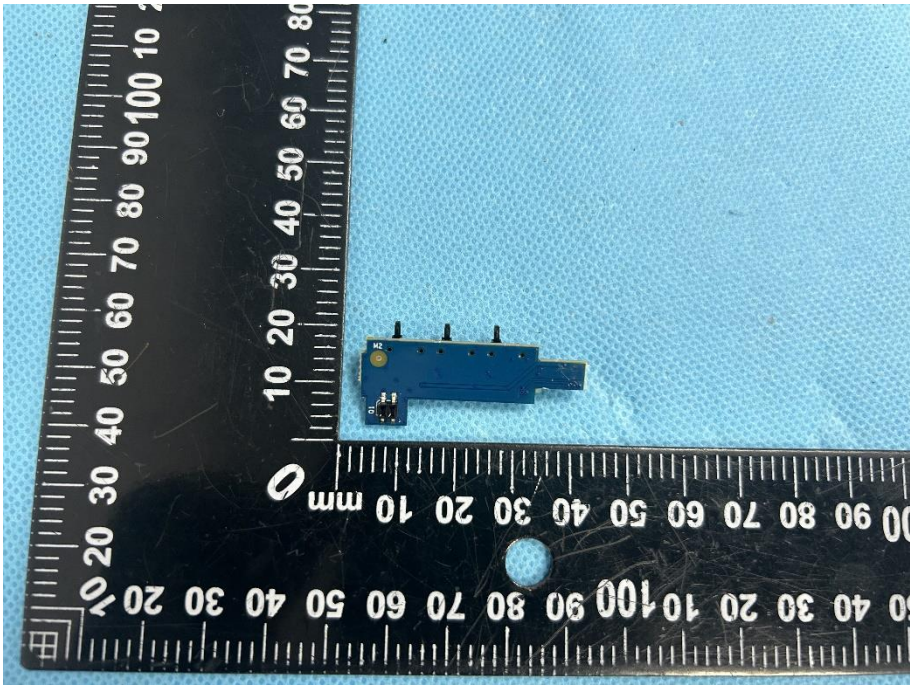
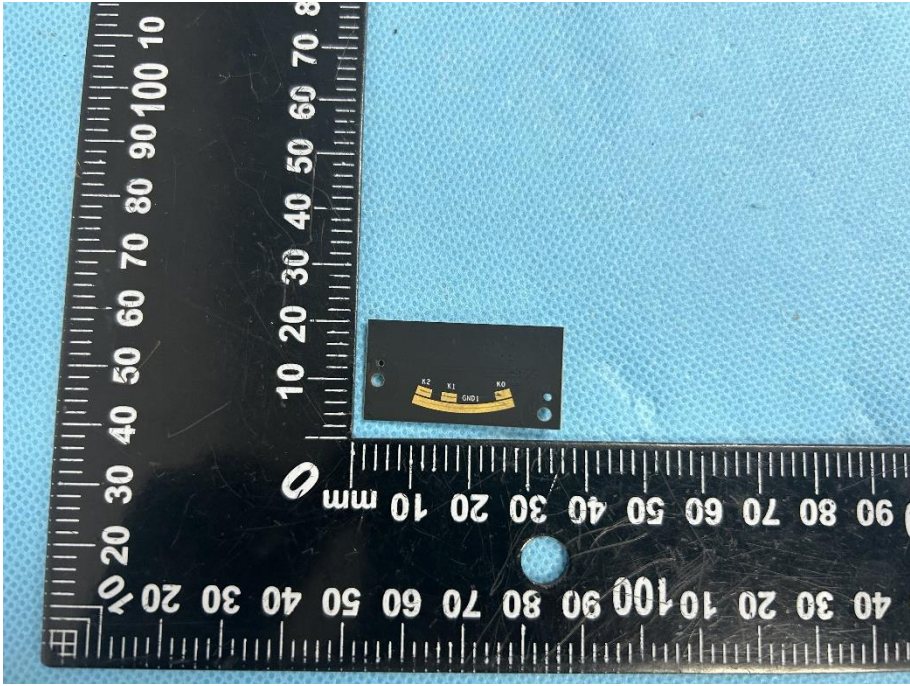


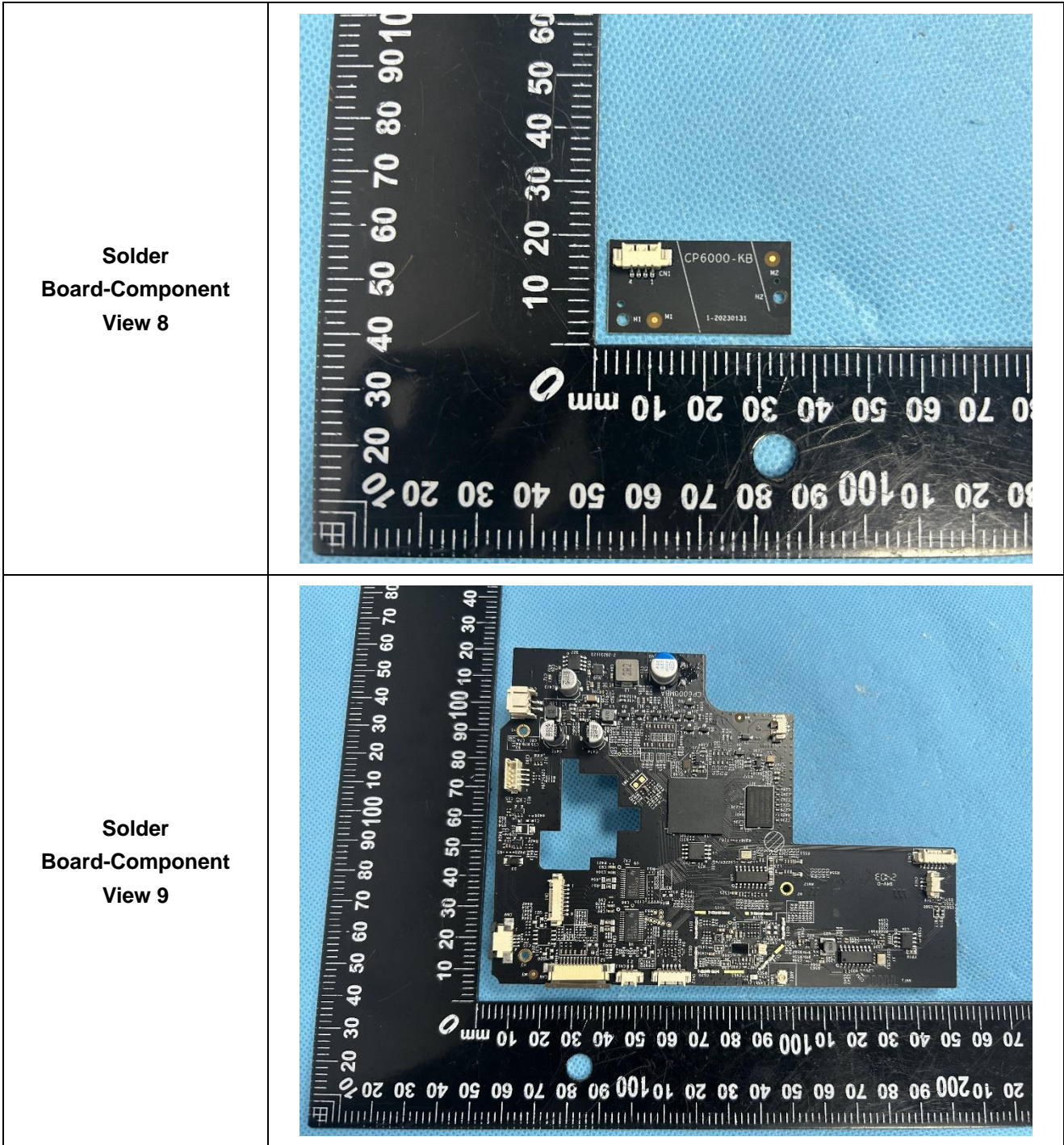
Solder Board-Component View 1



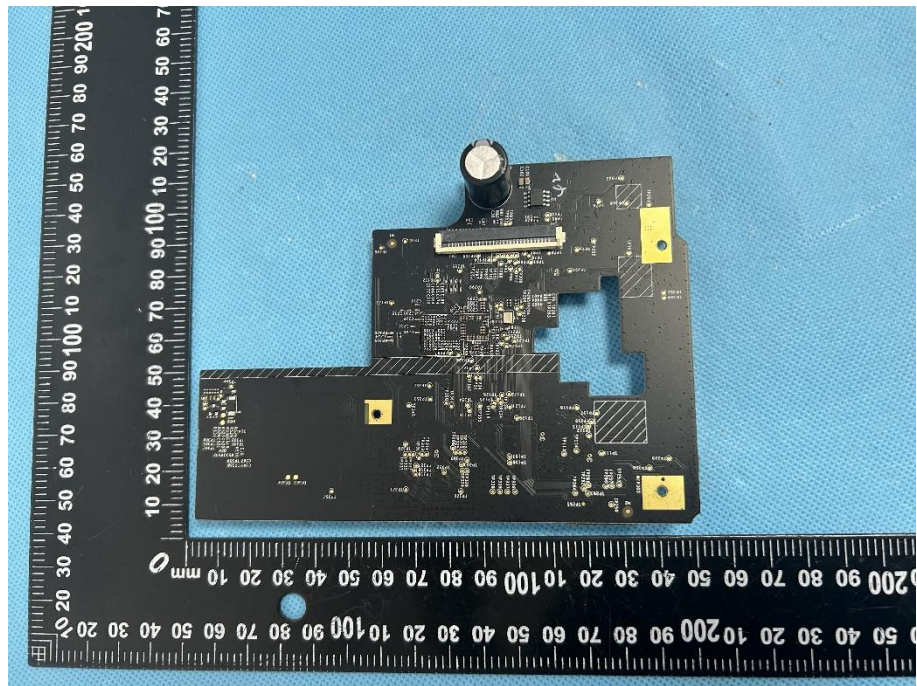
<p>Solder Board-Component View 2</p>	 A photograph showing a small, rectangular, yellowish component mounted on a blue textured surface. A black ruler with white markings is placed below the component for scale. The ruler shows measurements in millimeters, with the component positioned between the 10 mm and 20 mm marks. The component has a small notch on its left side.
<p>Solder Board-Component View 3</p>	 A photograph showing a small, rectangular, black component mounted on a blue textured surface. The component is more complex than the one in View 2, with several small components and markings on its surface. A black ruler with white markings is placed below the component for scale. The ruler shows measurements in millimeters, with the component positioned between the 10 mm and 20 mm marks. The component has a small notch on its left side.

<p>Solder Board-Component View 4</p>	 A photograph showing a small, rectangular, gold-colored component with two circular holes, mounted on a blue textured surface. A black ruler with white markings is placed below the component for scale. The ruler shows centimeter and millimeter markings. The component is positioned between the 10 mm and 20 mm marks on the ruler.
<p>Solder Board-Component View 5</p>	 A photograph showing a small, rectangular, blue printed circuit board (PCB) component with several surface-mounted components, including a microchip and a capacitor. The component is mounted on a blue textured surface. A black ruler with white markings is placed below the component for scale. The ruler shows centimeter and millimeter markings. The component is positioned between the 10 mm and 20 mm marks on the ruler. The PCB has some text printed on it, including "94V-0" and "323".

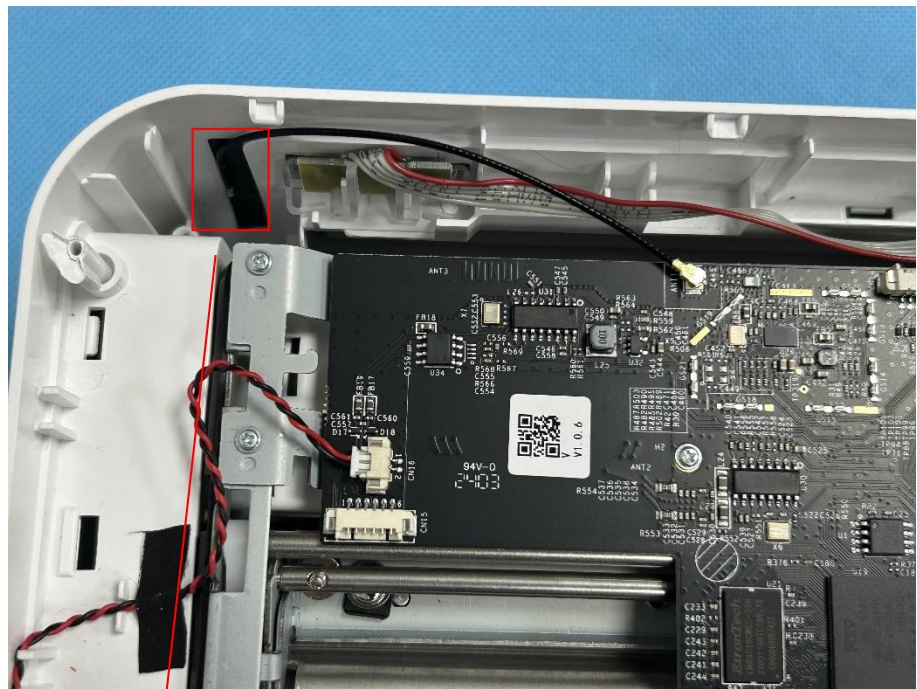
<p>Solder Board-Component View 6</p>	 <p>A photograph of a small, blue, rectangular solder board component. The component has several pins extending from its top edge. It is placed on a black ruler with white markings for scale. The ruler shows measurements in millimeters, with the component positioned between the 10 mm and 40 mm marks. The background is a light blue textured surface.</p>
<p>Solder Board-Component View 7</p>	 <p>A photograph of the same solder board component from a different perspective. The component is black with yellow markings and text, including 'R2', 'R1', 'CAD1', and 'R0'. It is placed on the same black ruler with white markings. The component is positioned between the 10 mm and 40 mm marks. The background is a light blue textured surface.</p>



**Solder
Board-Component
View 10**

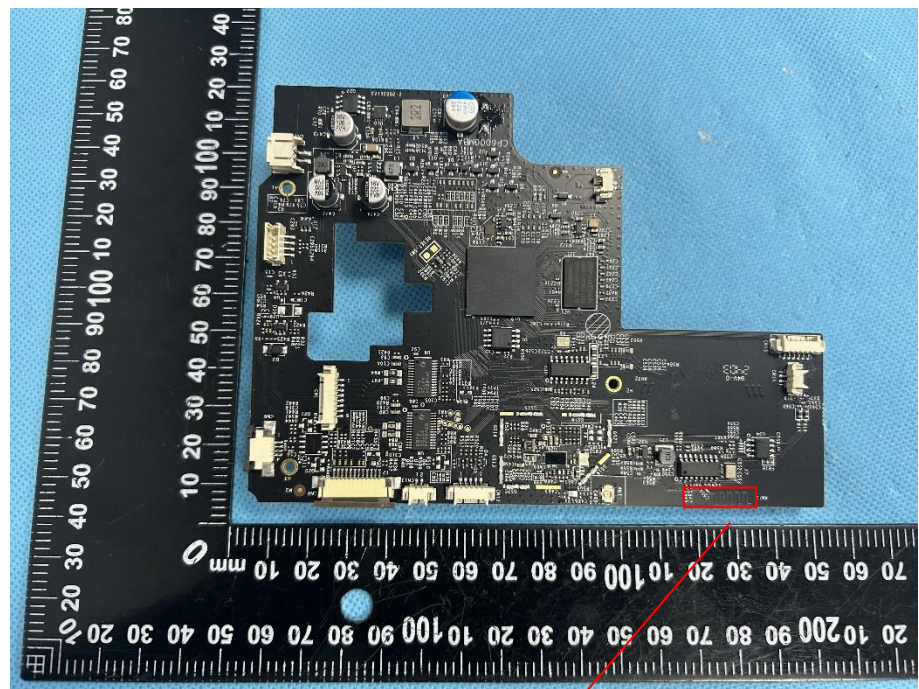


Antenna View 1



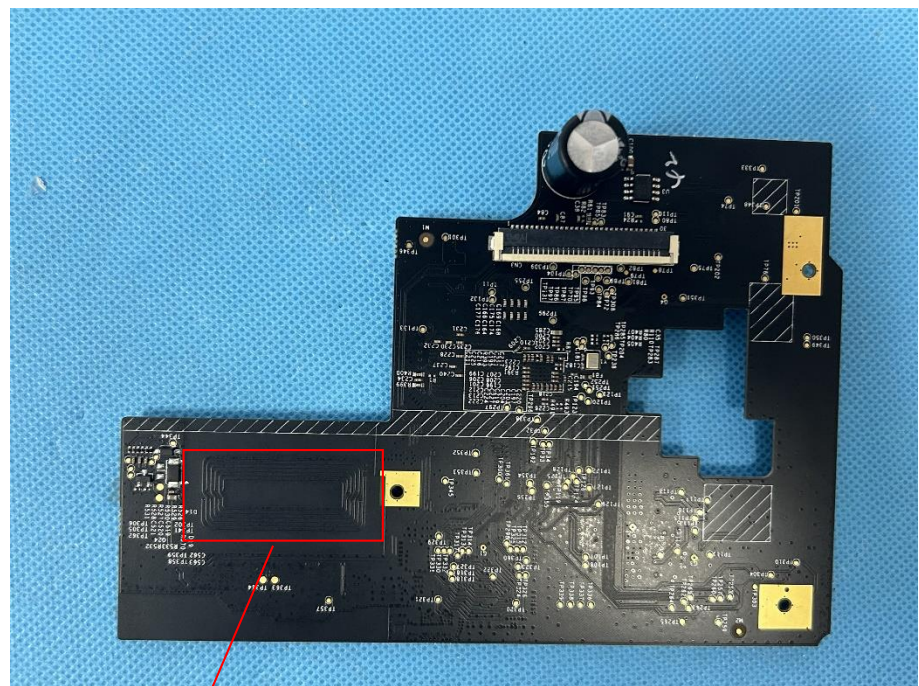
WIFI /BT 1 Antenna

Antenna View 2



BT 2 Antenna

Antenna View 3



NFC Antenna