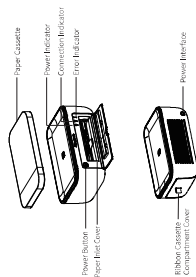


Product Introduction



Accessories

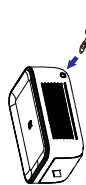


Power Adapter 1, Quick Start Guide 1, Ribbon Cassette 1, Ribbon Cassette 2, Photo Paper 20

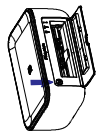
▲ Note: The printer equipped with a ribbon will 2 packages of photo paper that can print about 20 pcs for testing.

Power On

- Connect power supply. Plug one end of the power cord into the printer's power interface, and the other plug the adapter into power outlet.



- Power on. Lock down the power button for 3 seconds to turn on the printer.



Ribbon Cassette Loading

- Open the ribbon cassette compartment cover. The printer will automatically open the ribbon cassette compartment cover.
- Insert the ribbon cassette. Make sure the ribbon cassette is inserted into the ribbon cassette compartment in the direction of the arrow marked on the cassette, and that the "BLACK" tab is located to the right.

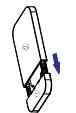


- Close the ribbon cassette compartment cover. The printer will automatically close the ribbon cassette compartment cover.



Photo Paper Loading

- Open the paper cassette. Gently lift up and swing the paper cassette above the printer. Pull out part B and flip it down, and then lift part C cover upward.



- Load photo paper. Take out the photo again from the accessories box, and load it in the paper cassette with glossy side facing up.



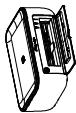
- Close the paper cover. The printer will automatically close the paper cover.



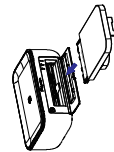
▲ Note: Do not touch the photo in the printer. If the photo is damaged, please do not touch the glossy side to ensure the print effect, except for the non-inked side.

Paper Cassette Loading

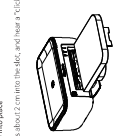
- Open the paper inlet cover. The printer will automatically open the paper inlet cover.



- Load the paper cassette into the printer in the direction shown below.



- Load the paper cassette into place. The paper cassette slides about 2 cm into the slot, and hear a "click" to indicate that it is in place.

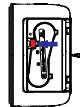


Ribbon Cassette Replacing

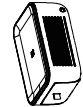
- Open the ribbon cassette compartment cover. The printer will automatically open the ribbon cassette compartment cover.
- Remove the old ribbon cassette. Push the ribbon cassette up and the ribbon cassette will pop up automatically. Remove the old ribbon.
- Load the new ribbon cassette into place until hear a "click" sound, and then close the compartment cover. The printer will automatically close the ribbon cassette compartment cover.



- Remove the old ribbon cassette. Push the ribbon cassette up and the ribbon cassette will pop up automatically. Remove the old ribbon.



- Load the new ribbon cassette into place until hear a "click" sound, and then close the compartment cover. The printer will automatically close the ribbon cassette compartment cover.



Notes

All the drawings of product and accessories in the manual are for reference only. Due to the updating and upgrading of the product, there may be some differences between the actual product and the drawings; please refer to the actual product. For more product information, please contact HP's customer service.

CP4100 Photo Printer

Product Name: Photo Printer
Dimensions: 201x172x91 mm
Product Model: CP4100-1525A
Weight: About 2.0 kg (Net Weight, 4.40886691)
Print Size: A4
Operating Temperature: 5°C~41°C
Net Connection: IEEE 802.11b/g/n 2.4 GHz
Manufacturer: Hewlett-Packard Development Company, L.P.
Address: 18th, Boshuwan Road, Binyuan District, Xiamen, China 361109
Web: www.hp.com
Email: support@hp.com

