

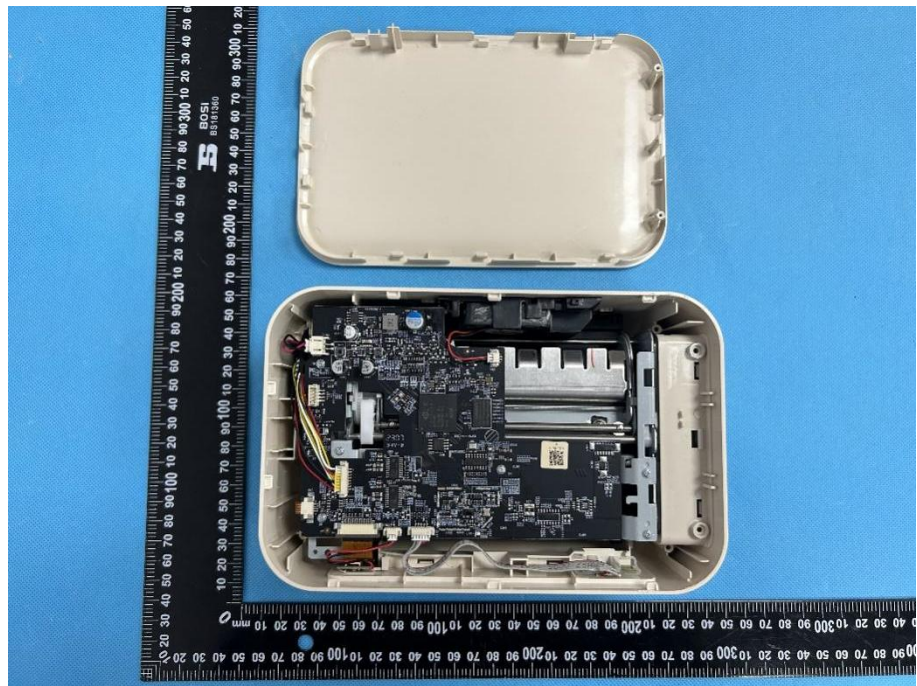


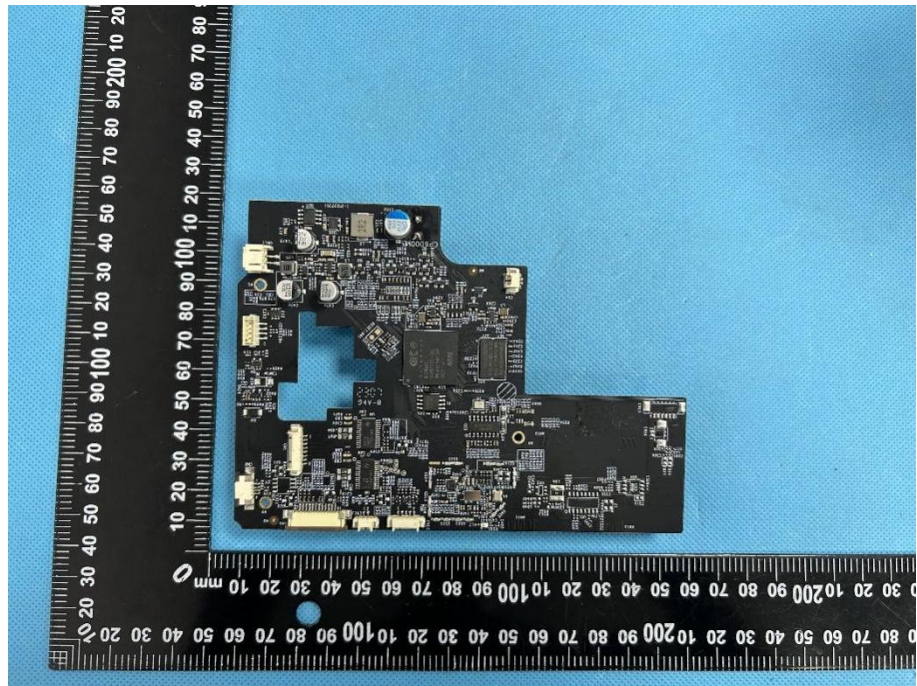
EXHIBIT 3 - EUT INTERNAL PHOTOGRAPHS

<p>EUT Housing and Board View 1</p>	 A photograph showing the internal components of an EUT housing. The top part is the housing lid, which is white and has a central rectangular cutout. Below it is the internal board, which is also white and has a similar rectangular cutout. A black ruler with white markings is placed vertically to the left of the components for scale. The ruler has markings in millimeters and centimeters. The background is a blue textured surface.
<p>EUT Housing and Board View 2</p>	 A photograph showing the internal components of an EUT housing, similar to View 1. The top part is the housing lid, which is white and has a central rectangular cutout. Below it is the internal board, which is also white and has a similar rectangular cutout. A black ruler with white markings is placed vertically to the left of the components for scale. The ruler has markings in millimeters and centimeters. The background is a blue textured surface.

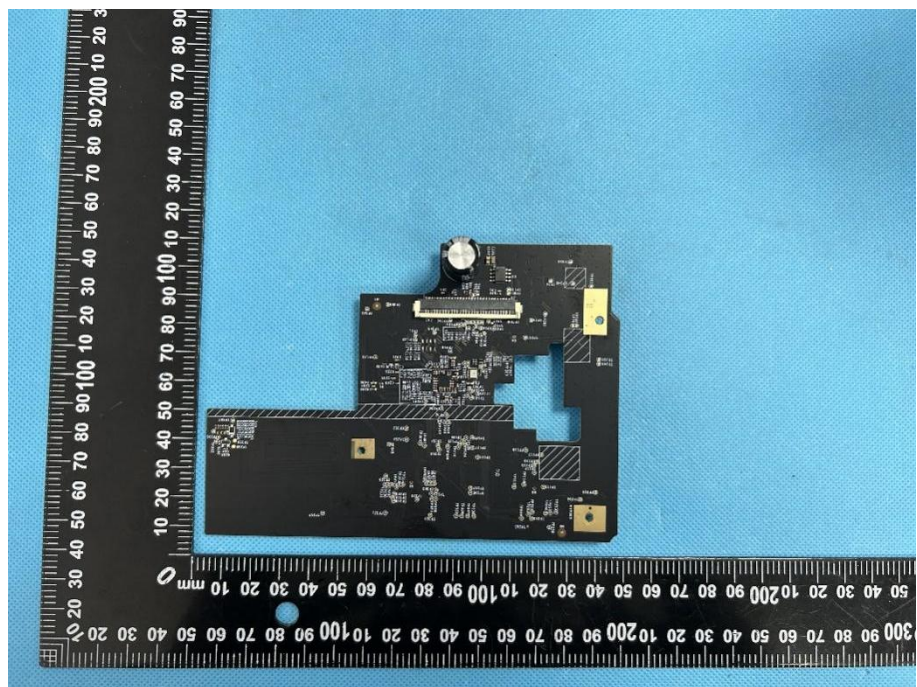
**EUT Housing and
Board View 3**



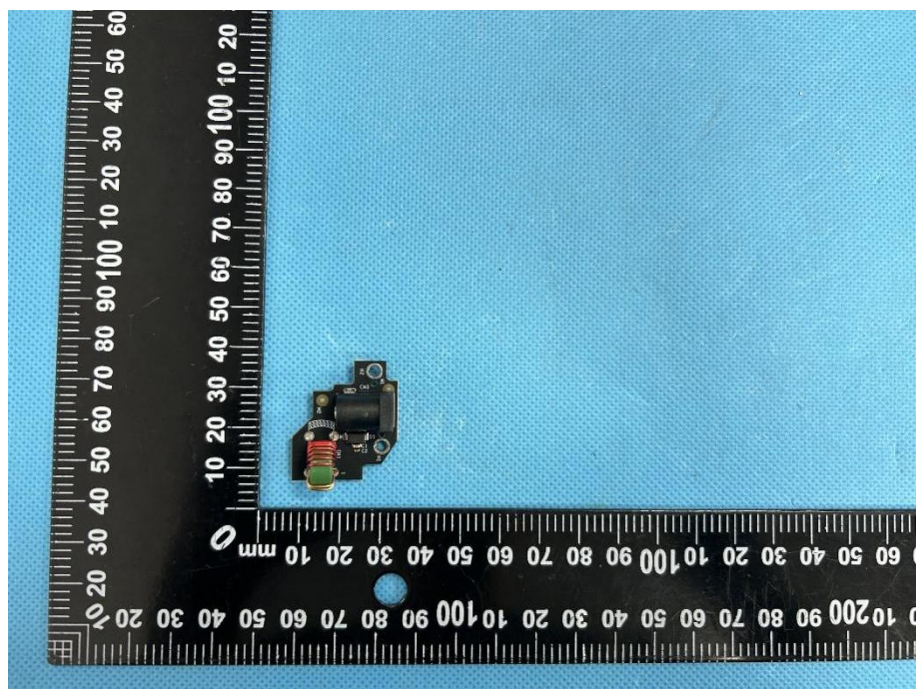
**Solder
Board-Component
View 1**

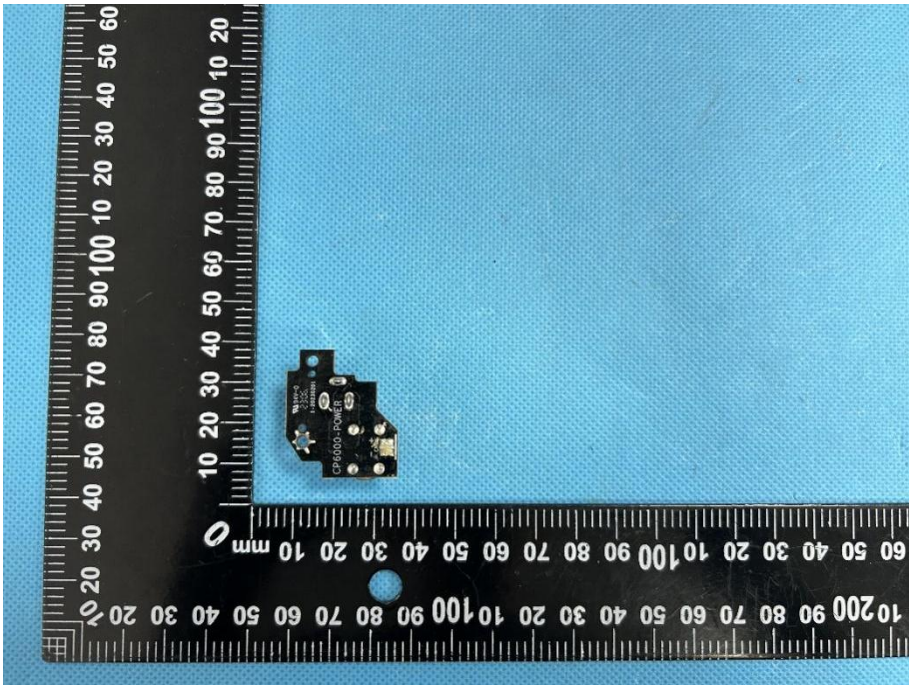
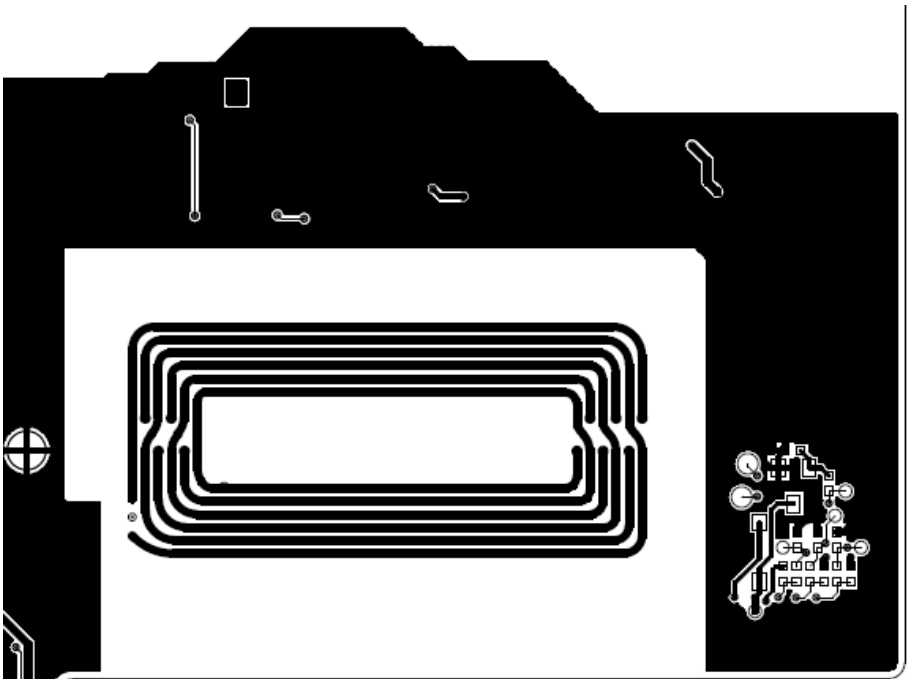


**Solder
Board-Component
View 2**



**Solder
Board-Component
View 3**



<p>Solder Board-Component View 4</p>	 <p>A photograph showing a small, dark electronic component labeled "CP8600-POWER" mounted on a blue PCB. The component is positioned near a black ruler with white markings in millimeters. The ruler shows measurements from 0 to 100 mm on both the horizontal and vertical axes. The component is a small, rectangular chip with several solder points.</p>
<p>NFC Antenna</p>	 <p>A schematic diagram of an NFC antenna layout on a PCB. The layout features a central rectangular loop antenna structure composed of multiple parallel lines. To the right of the loop, there is a detailed circuit diagram showing various components like capacitors and resistors. On the left side, there is a circular symbol with a crosshair, likely representing a ground or reference point. The entire layout is shown in white lines on a black background.</p>

Antenna View

