
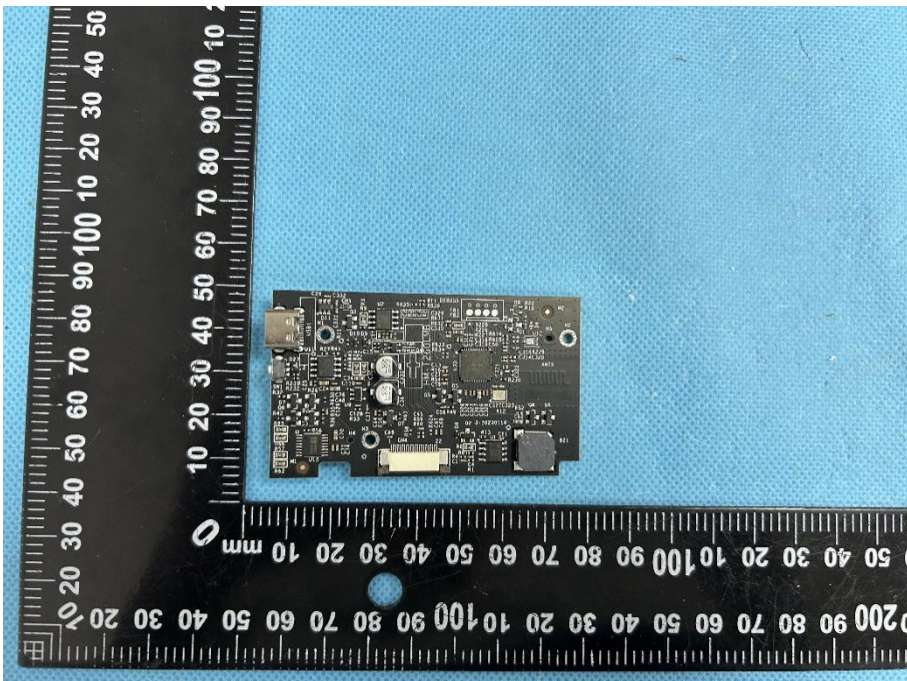
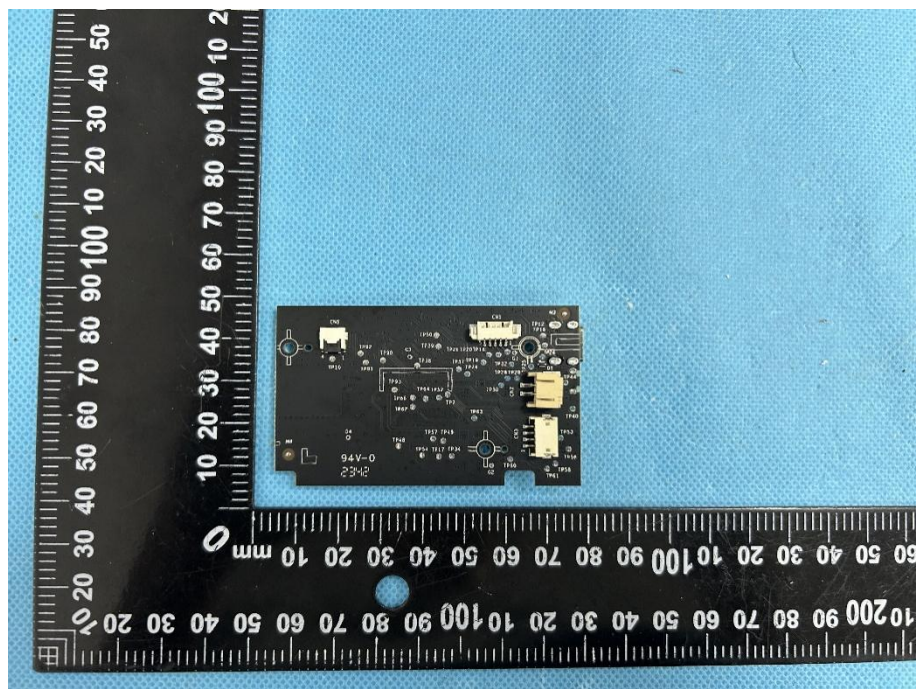


EXHIBIT 3 - EUT INTERNAL PHOTOGRAPHS

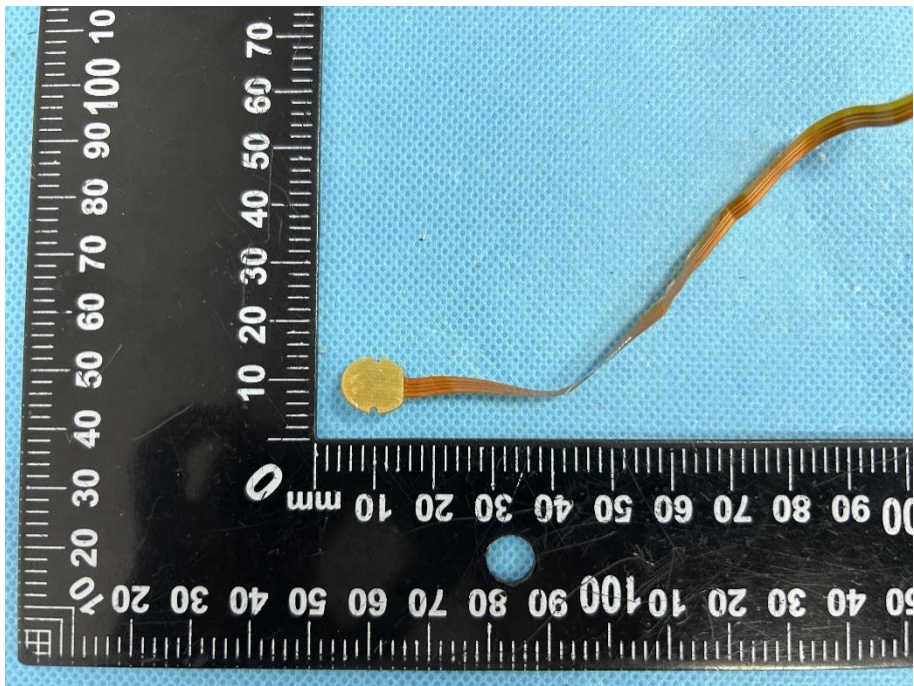
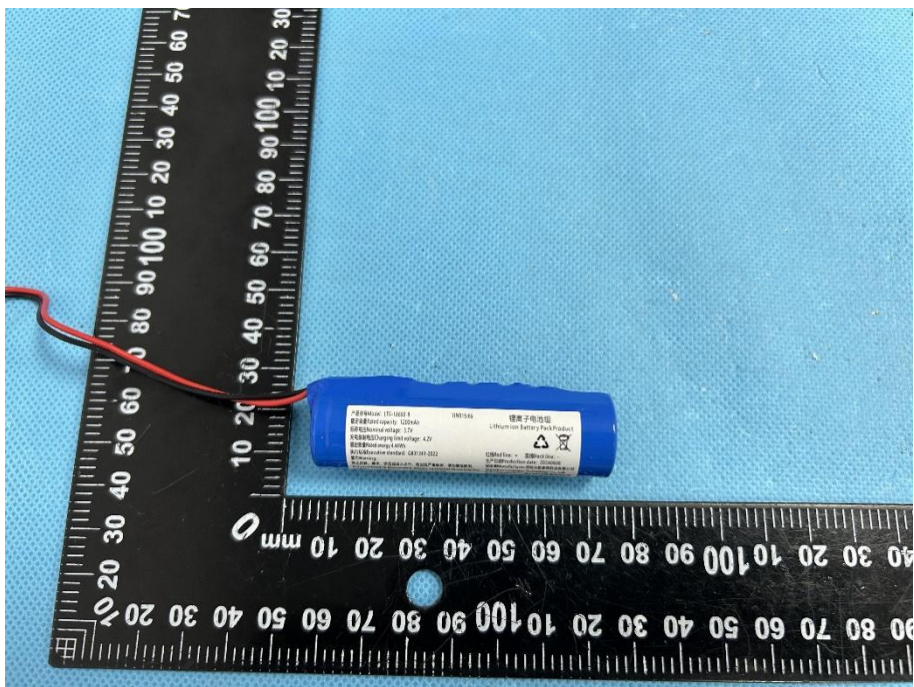
<p>EUT Housing and Board View 1</p>	 A photograph showing the EUT housing and board assembly. The housing is a light grey plastic enclosure, shown in two pieces (top and bottom) and one piece with the board inserted. The board is a small, rectangular printed circuit board (PCB) with various components, including a blue battery pack, a black connector, and a gold ribbon cable. A black ruler with white markings is placed vertically to the left of the assembly for scale. The ruler shows measurements in millimeters (0 to 100) and centimeters (0 to 10).
<p>Solder Board-Component View 1</p>	 A close-up photograph of the solder board-component. The board is a small, rectangular PCB with various components, including a black connector, a gold ribbon cable, and a blue battery pack. A black ruler with white markings is placed vertically to the left of the board for scale. The ruler shows measurements in millimeters (0 to 100) and centimeters (0 to 10).

**Solder
Board-Component
View 2**



**Solder
Board-Component
View 3**



<p>Solder Board-Component View 4</p>	 A photograph showing a small, yellow, circular solder component on a blue textured surface. A black L-shaped ruler is placed next to it for scale. The ruler has markings in millimeters, with the vertical scale on the left and the horizontal scale at the bottom. The component is positioned near the 10 mm mark on the vertical scale and the 10 mm mark on the horizontal scale.
<p>Solder Board-Component View 5</p>	 A photograph showing a blue cylindrical lithium battery pack component on a blue textured surface. Two red wires are attached to the left side of the battery. A black L-shaped ruler is placed next to it for scale. The ruler has markings in millimeters, with the vertical scale on the left and the horizontal scale at the bottom. The battery is positioned near the 10 mm mark on the vertical scale and the 10 mm mark on the horizontal scale. The battery label contains text in Chinese and English, including "锂离子电池" (Lithium-ion Battery) and "Lithium-ion Battery Pack Product".

