

Speaker Phone User Manual

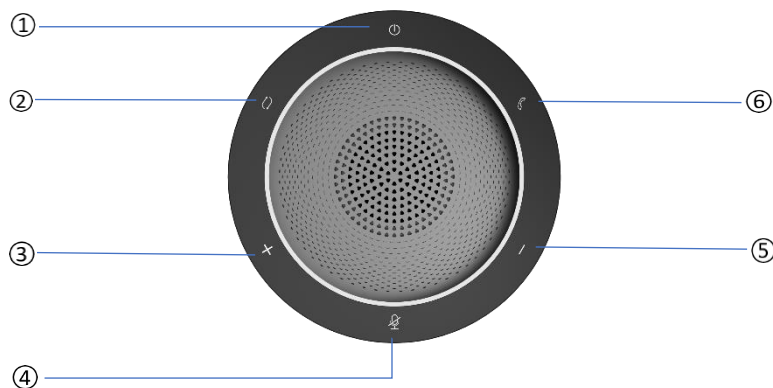


1. Package Contents



2. Product introduction

SP200 is Smart Wireless Conference speakerphone. This product can connect with PC, tablet and smartphone via Bluetooth or USB. It supports omnidirectional microphone and high communication quality speaker to realize it can play and receive voice of 360° in long distance. It is small and portable, convenient fixed office and mobile office.



① Power on/off button

② **switch mode button**

③ Volume up button

④ Microphone mute button

⑤ Volume down button

⑥ Answering/hanging up/Rejecting call button



⑦ Microphone

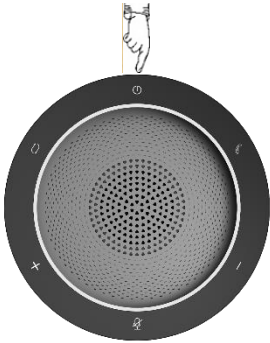
⑧ Micro USB port

3. How to power on/off

Press power button and hold on 3s, the white power indicator LED will light up and **the switch mode** LED will flash.

If you want to use USB mode, please tap **the switch mode** button; If you want to use Bluetooth mode, please search Bluetooth SPEAKERPHONE SP200 in your target device.

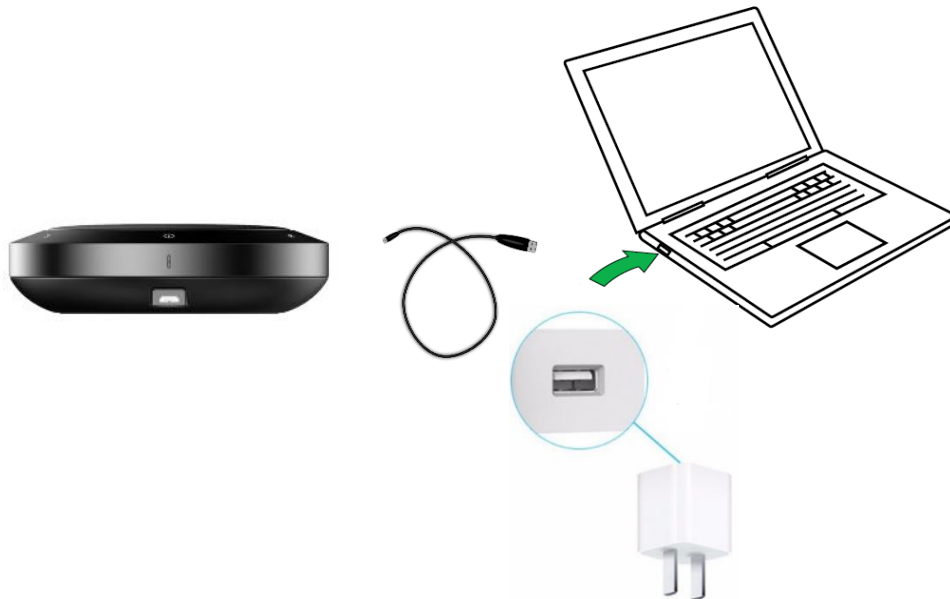
Press power button and hold on 3s again, the device will power off and all LED will be off.



4. How to charge

Please insert USB cable in the micro USB port of SP200. Then connect USB type A interface with PC's USB port or 5V external charger.

When the device is charging, the red power indicator LED will light up, the LED will off when it is full charged.



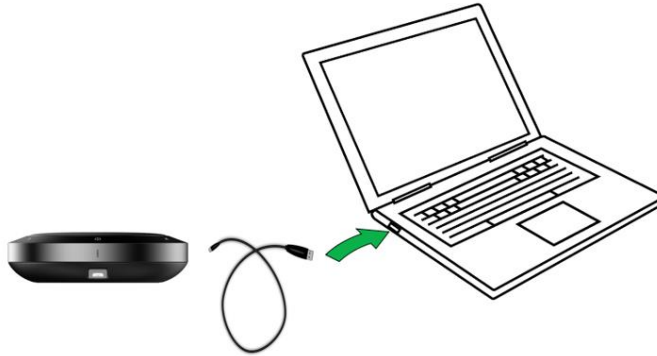
*AC adapters are purchased separately

*only UL certified ITE power supply can be used. The electrical rated output is 5V DC, 1A current is minimum required.

5. How to connect

1. Connect with PC

- Please use USB cable to connect SP200 with target PC;
- Press power button and hold on 3s, the power indicator LED will light up and the input source switch LED will flash, then tap **the switch mode** button to enable USB mode;
- Please set the SP200 as default output and input audio device.









2. Connect with smartphone /host device with Bluetooth

- Press power button and hold on 3s, the white power indicator LED will light up and the blue **switch mode** LED will flash. Then SP200 is in the Bluetooth mode;
- When host device has connected with SP200, the blue **switch mode** indicator LED will be not flashing and keep lighting;
- Press power button and hold on 3s again, the Bluetooth will power off and **the switch mode** indicator LED will be off.



6. How to operate

ICON	FUNCTION	OPERATION
	Power on/off	Press and hold(3s) this button until the white power indicator LED is on
	Display battery level	Tap this button
	Mute/unmute	Tap this button
	Turn up the volume	Tap “+” button
	Turn down the volume	Tap “-” button
	Answer call	Tap this button
	End call	Tap this button
	Reject call	Press and hold(3s) this button
	Switch mode	Tap this button
	Connect new Bluetooth device	Press and hold(3s) this button to connect with a new Bluetooth device
	Reconnect/disconnect with trusted Bluetooth device	Press and hold(3s) this button to reconnect/disconnect with trusted Bluetooth device

7. Product Specification

SPEAKERPHONE SP200	SPECIFICATION
Microphones	Omni-directional, 4 MICs
Speaker	3W, Dynamic, 40mm
Bluetooth range	Up to 10m(30ft), Class2
Bluetooth version	4.2, compatible with 4.1/4.0/3.0/2.1
Paired devices	Up to 8 trusted devices
Talk time	Up to 6H
Operating temperature	5°C to 40°C (41°F to 104°F)
Storage temperature	-5°C to 60°C (23°F to 140°F)
Bluetooth audio bandwidth	A2DP, Wide band
Support OS	Windows all, Android 6.0+, IOS 8.0+
Connectivity	USB 2.0 and Bluetooth connection
Micro USB port	Charging and data connection
Dimensions	D 121mm x H 34.7mm
Weight	200g



Warning

Only could be used in areas below 2000 meters above sea level;
Only applicable to non-tropical climate conditions.

8. Trouble Shooting

Problem or Phenomenon	Possible Reasons	Treatments
Can't power on	Low battery	Charge through adapter
No sound	Host system audio setting doesn't select the right output device; The speaker volume is very low	Selecting the correct output audio source; Turn up the speaker volume.
USB doesn't work	Doesn't use the right USB cable	Please use the original USB cable in the package box.
Can't be charged	Adapter issue or battery is full	Change a new adapter; Tap the power button to check the battery level
Can't connect with Bluetooth	The Bluetooth driver of host device doesn't support audio protocol	Update the latest Bluetooth driver of your host device.

Warning:

Changes or modifications to this unit not expressly approved by the party responsible for compliance could void the user's authority to operate the equipment.

NOTE:

This device complies with part 15 of the FCC Rules. Operation is subject to the following two conditions: (1) This device may not cause harmful interference, and (2) this device must accept any interference received, including interference that may cause undesired operation.

NOTE:

This equipment has been tested and found to comply with the limits for a Class B digital device, pursuant to part 15 of the FCC Rules. These limits are designed to provide reasonable protection against harmful interference in a residential installation. This equipment generates, uses and can radiate radio frequency energy and, if not installed and used in accordance with the instructions, may cause harmful interference to radio communications. However, there is no guarantee that interference will not occur in a particular installation. If this equipment does cause harmful interference to radio or television reception, which can be determined by turning the equipment off and on, the user is encouraged to try to correct the interference by one or more of the following measures:

- Reorient or relocate the receiving antenna.
- Increase the separation between the equipment and receiver.
- Connect the equipment into an outlet on a circuit different from that to which the receiver is connected.
- Consult the dealer or an experienced radio/TV technician for help.

RF exposure compliance statement:

This device has been evaluated to meet the general RF exposure requirement