

AeroBand

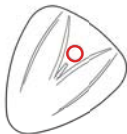
DL-1902A

ON-OFF

A round button which is on the surface of the PocketGuitar.

Click to start-up

Long press for 3 seconds or above to shut down the device.



INDICATOR LIGHT

There is an indicator light on the surface of the Aeroguitar that indicates the connection status.

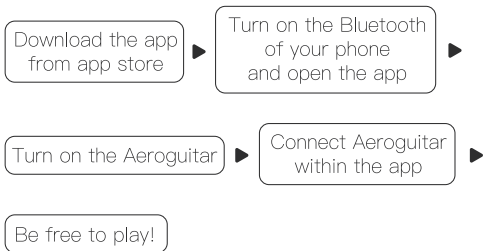
Status	Blinking	Flashing light turning out	Quick flashing and turning out	BLN
Meaning	Waiting for connecting	Connected with devices	Need charging	charging

CHARGING

Status of the indicator light	Quick flashing	BLN	Stop flashing
Meaning	need to charge immediately	Charing	Full charged

For battery life extending, you could check the battery level through connecting to the app but could not use it during charging.

FLOW

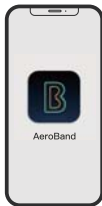


APPLICATION

To connect with PocketGuitar, you need to download the relevant application program from app store and then connect with it through our app.

The first connection

1. Download AeroBand application program from the Apple App Store or other app Store.
2. Follow the onscreen instructions and connect your device with Aeroguitar.



Note:

When using the app for the first time, please be sure to allow the app to access the Bluetooth from the device.

Some devices may also need permissions to the GPS because of the Bluetooth mode, otherwise the product will not be able to connect with.

CONNECTION

Open the home page of the app and connect it according to the instructions.

Please have your phone's Bluetooth switched on
Press the power button to turn the PocketGuitar on

Aeroguitar cannot be connected through
your phone's system settings,
please connect it in the app

GESTURE

Once connected successfully, you could start playing music!

Hold plectrum tightly

please do not press the button and pay attention
to distinguish the front and back while playing



Sweep down ● or ↓

sweep your wrist down only, do not use your arm



Sweep up ● or ↑

sweep your wrist up only and keep your arm still



AeroBand | PocketGuitar

Rhythmic pattern



sweep your wrist according to the direction of the arrow and don't move your arm



There is no need to move your arm while playing please just swing your wrist

as someone is holding your arm



No need to move your arm while sweeping up, just swing your wrist

otherwise the device and the performance effect would be affected



No need to move your arm while sweeping down, just swing your wrist



For beginners: When sweeping with PocketGuitar, please make sure the pick's tip points towards outside and against your hand.

FAQ

1. About the connection

First, make sure that you are not connecting through your phone`s system settings (please connect in the AeroBand App).

Some devices of Android need to open the positioning function (GPS) during the connection process, and you can close it as soon as the devices connected successfully.

During the connection process, please place the Aeroguitar as close as possible to your phone.

If you still cannot connect yet, you could close the app and reopen it, and restart the Bluetooth.

2.About battery

If is fully charged, the PocketGuitar`s duration of use is 5–8 hours and the standby time could be more than 30 days.

The duration of use could be increased considerably if turned off the "Vibration" function in the application.

FCC WARNING

This device complies with Part 15 of the FCC rules.

Operation is subject to the following two conditions:

- 1) this device may not cause harmful interference, and
- 2) this device must accept any interference received, including interference that may cause undesired operation.

Caution: Changes or modifications not expressly approved by the party responsible for compliance could void your authority to operate the equipment.

Radiation Exposure Statement

The device has been evaluated to meet general RF exposure requirement.

The device can be used in portable exposure condition without restriction.

CONTACT US

If you have any after-sales service needs, please contact AeroBand.

Official website: www.aeroband.net