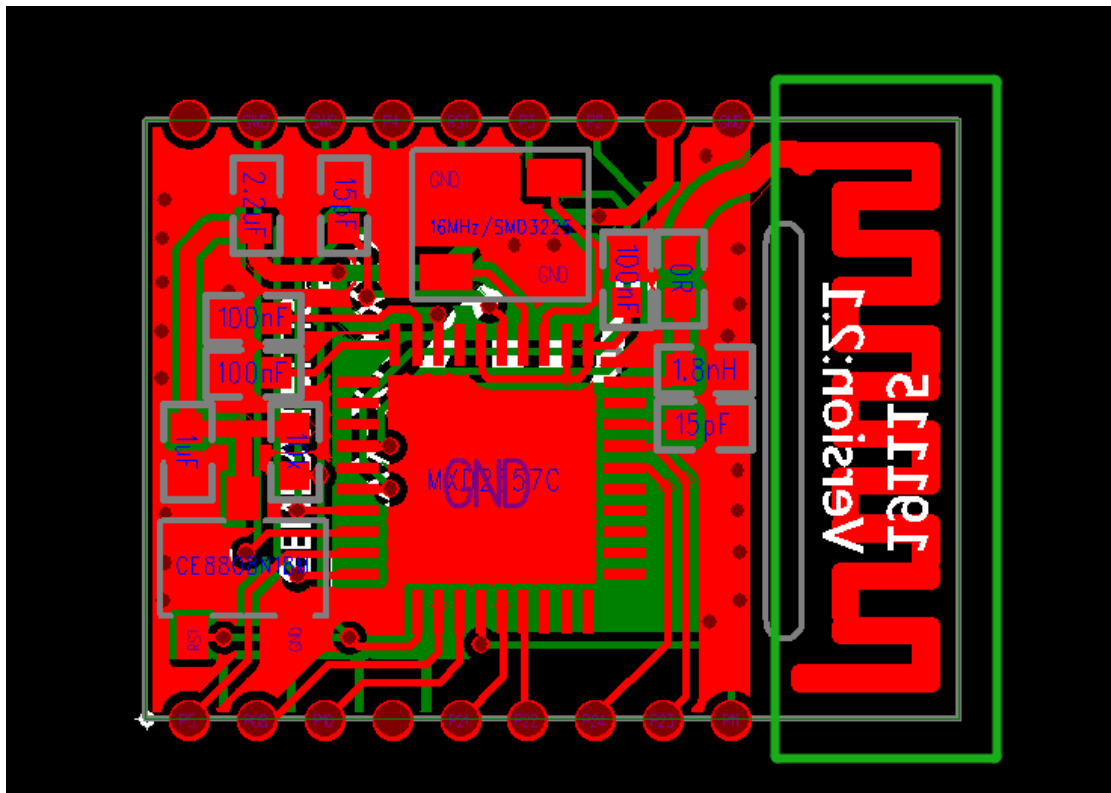


ANTENNA INFORMATION



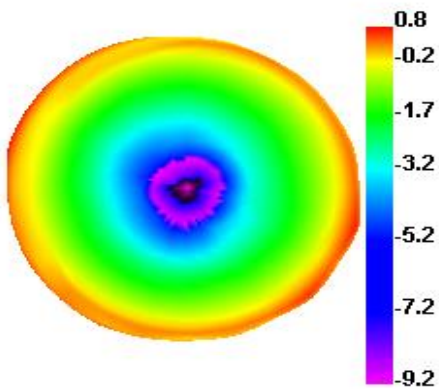
Antenna Type: PCB antenna



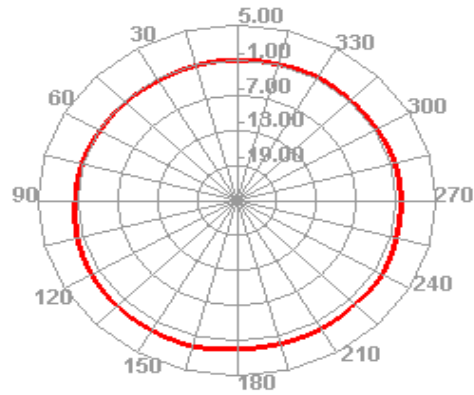
Passive Test For 2.21-2.8G		
Freq (MHz)	Effi (%)	Gain (dBi)
2400	57.32	0.8
2410	58.07	0.89
2420	58.34	0.81
2430	59.3	0.68
2440	62.52	1.02
2450	63.32	1.14
2460	61.65	0.8
2470	59.91	0.55
2480	58.57	0.21
2490	57.69	0.12
2500	57.3	-0.15

Application Information	
O4Version	4.68.283
TotalTime	15m 6s 811ms

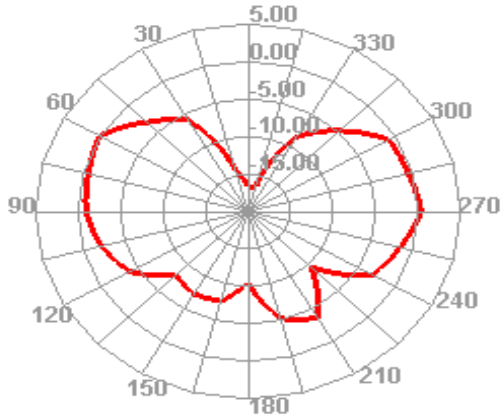
2400.000MHz



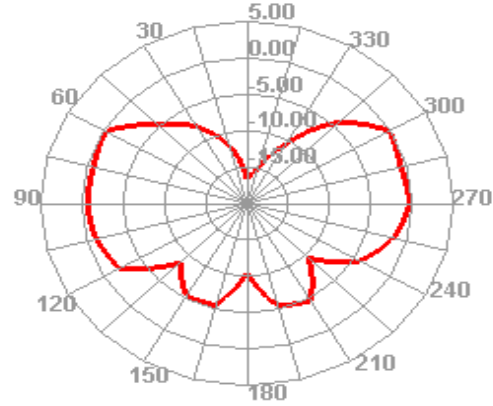
2400.000MHz H



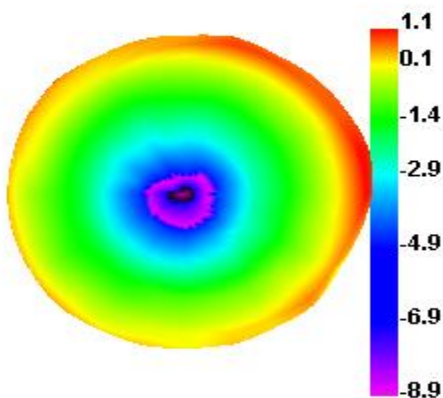
2400.000MHz E1



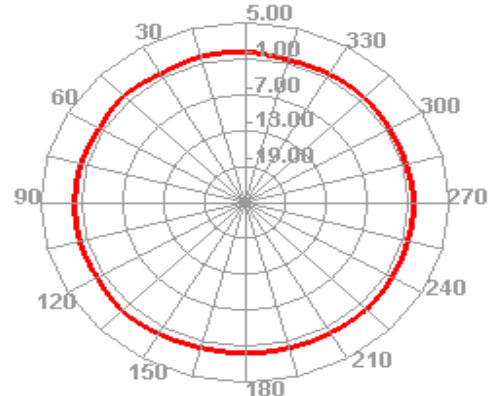
2400.000MHz E2



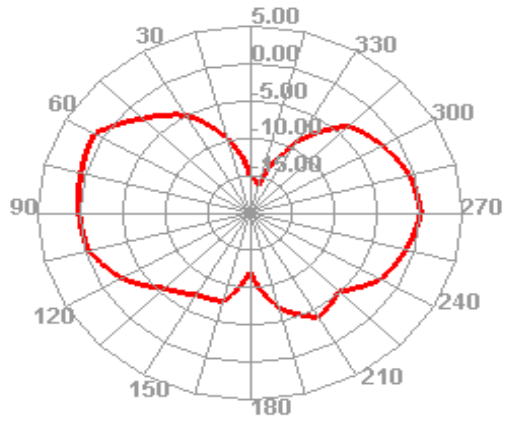
2450.000MHz



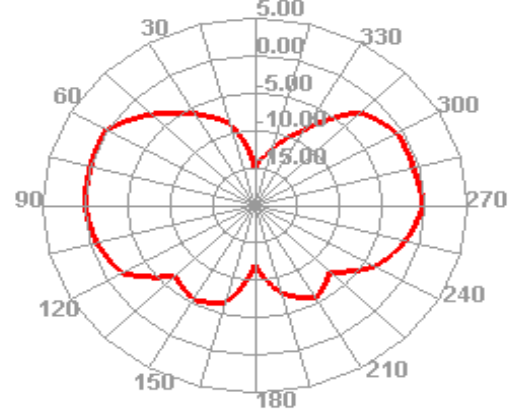
2450.000MHz H



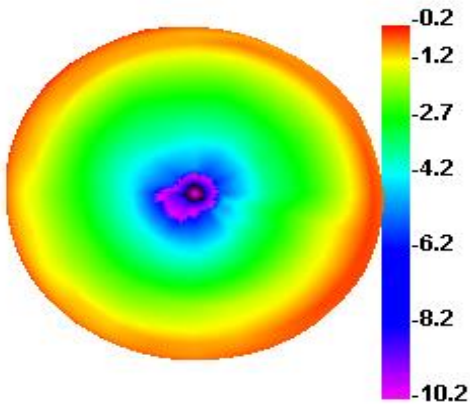
2450.000MHz E1



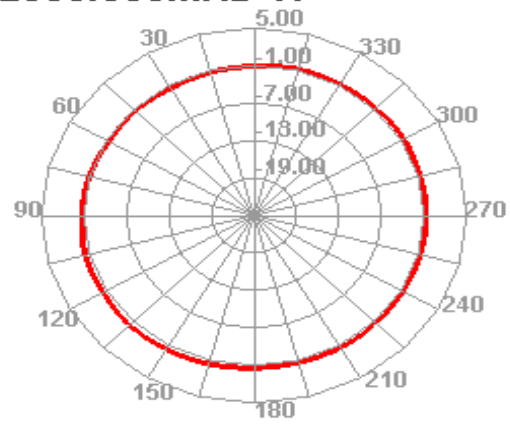
2450.000MHz E2



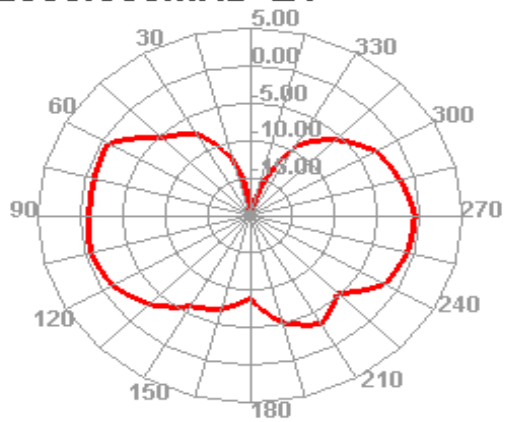
2500.000MHz



2500.000MHz H



2500.000MHz E1



2500.000MHz E2

