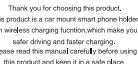


User Manual



Air Vent Clamp

Air Vent Clamp



Telescopic Arm Mount



PRODUCT SPECIFICATIONS

- Power in interface: Type C USB
- Standard/Protocol: WPC Qi V 1.2.4
- Wireless Charging Distance: 3-8mm
- Working Frequency: 100-200KHz

- **Charging Efficiency:** >= 90%
- **Compatibility:** Qi, CE, FCC, RoHS/CE, Prop 65
- **Product color:** Black/Gray/Silver/Black Customized color
- **Operating Environment:** 0°C~45°C temperature, 10%~80% humidity
- **Storage Environment Temperature:** -10°C~55°C
- **Cell type and quality:** A1111(A1109),
- **Sensor:** Gravity Sensor
- **Motor:** Electric Gear Motor
- **Product Weight:** 130g(Averest Clamp) - 130g(with dashboard mount)
- **Package weight:** 250g(Averest Clamp) - 300g(with dashboard mount)
- **Adaptability:** Fit the width of Phone-61~80mm with protective case
- **Application:** Qi-enabled smart phones
- **Product Size:** 120.9*96.0*11.0mm (Clamp Open)
- **Size:** 116.0*72.1*11.0mm (Clamp Closed)

MAIN FEATURES

- Smart Car model wireless phone holder
- Quantum Leap technology widely applied
- Quantum smart phones
- QWERTY FAST CHARGE technology
- Dynamic smart gravity sensor
- The built-in electric motor drives lamps open and close automatically
- Trillix touch switch buttons to walk users take off the phone without habits
- Built-in A4 capacitor opening lamps open automatically
- Adjustable 100% variable light source built-in supports all landscape or portrait navigation mode
- Aluminum alloy clamps and bottom support with anodizing finishing
- Full HD High display (true blue)
- Creative universal arm clamp
- Durable telescopic arm device (transparent)
- Optical LCD lighting logo or pattern on front bezel

UNIQUE FEATURES



- We designed three touch switches on left/right and top sides so suit various users' habit when touch the button to open or close the damper.

Air vent clamp
multichannel design

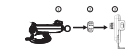


INSTALLATION STEPS



The feed nut on the 380° ball head of the air coil is, and then inserted into the back cover, and the feed nut is tightened to be integrated with the main body.

2. Telescopic arm dashboard installation method



The feed nut on the 380" is **1/8** inch of the air out **1/8**, and then inserted into the back cover, and the feed nut is tightened to be integrated with the main body.

3. Universal air vent clamp to the car air outlet



Press the handle firmly to open it a certain distance, then insert a blade of the air outlet and loosen the handle to clamp the blade.

4. Telescopic arm dashboard holder to car dashboard



Click the **telescope** icon dashboard on the instrument panel and press the air compression switch to secure the trackset

5. Connection to the car charger



PRODUCT USE



Connect the receiver connector to the phone, strengthen the receiver call to a phone phone Center the location and then attach the receiver to the back cover of the phone or secure it with the phone case.



Note: External router must be purchased separately.

LED INDICATOR DEFINATION

#	Working status	Lighting Effects
1	Power on Plug it in	Red and blue lights flash continuously for 3 times then turn off
2	Normal Charging	Blue light on breathably
3	Finished Charging	Blue light on constantly
4	Alert for abnormal	Red light flash

WHAT PACKED IN BOX

1. Wireless charger phone holder x 1
2. Telescopio arm mount with suction cup x 1
3. Air vent clamp & fixed nut set x 1
4. Charging cable x 1
5. User manual x 1

ATTENTION

1. Do not use the wireless charger in an ambient temperature above 42 degrees. Otherwise, it will reduce the efficiency of the charging.
2. Do not place any metal objects between the wireless charger and the charging device, which will result in failure of charging.
3. If your phone is charging slowly or not, and has a thick protective case, metal case or battery case, try remove the protective case or case.
4. Please do not use the phone or wireless charging device that is compatible with the Qi standards.
5. Please check the list of devices listed with Qi certification. If your phone is not on the list, it may not receive a message received. It may shut off, which may cause the wireless charger to stop charging the phone. If this happens frequently, immediately turn off the phone's vibration function.
6. The wireless charger may produce a weak sound when the phone is charging. This is a normal function. If the noise is disturbing, please contact us.
7. The mobile phone may be not when charging. When the phone is fully charged, the phone will stop charging at the level charging. When the temperature drops, the phone will stop charging. Try to put your phone and wireless charger in a cool place.
8. When the mobile phone is connected to a computer or adapter via a USB cable, the mobile phone is charged via the USB cable and the wireless charger does not charge.

- Amazing tech, joyful life



Made in China

FCC Warning Statement

Changes or modifications not expressly approved by the party responsible for compliance could void the user's authority to operate the equipment. This equipment has been tested and found to comply with the limits for a Class B digital device, pursuant to part 15 of the FCC rules. These limits are designed to provide reasonable protection against harmful interference in a residential installation. This equipment generates uses and can radiate radio frequency energy and, if not installed and used in accordance with the instructions, may cause harmful interference to radio communications. However, there is no guarantee that interference will not occur in a particular installation. If this equipment does cause harmful interference, which can be determined by turning the equipment off and on, the user is encouraged to try to correct the interference by one or more of the following measures:

- Reorient or relocate the receiving antenna.
- Increase the separation between the equipment and receiver.
- Connect the equipment into an outlet on a circuit different than that to which the receiver is connected.
- Consult the dealer or an experienced radio/TV technician for help.

RF Exposure: A distance of 15 cm shall be maintained between the antenna and users, and the transmitter may not be co-located with any other transmitter or antenna.