

Antenna Test Report

Electrical Properties	
Frequency	2400~2484MHz
Impedance	50 Ohm Nominal
V.S.W.R	1.92: 1 Max
Return Loss	-10 dB Max
Radiation	Omni-directional
Gain (Peak)	3.0 dbi
Polarization	Linear
Connector	1代IPEX
Physical Properties	
Antenna Material	PCB
Cable Type	O.D.1.13mm//L=67mm
Operating Temp.	-10 ~ +60 °C
Storage Temp.	-10 ~ +70 °C
Cable Color	Gray

Contents:

- 1. Antenna Profile*
- 2. Antenna Performance Test*
- 3. Antenna Passive Test*

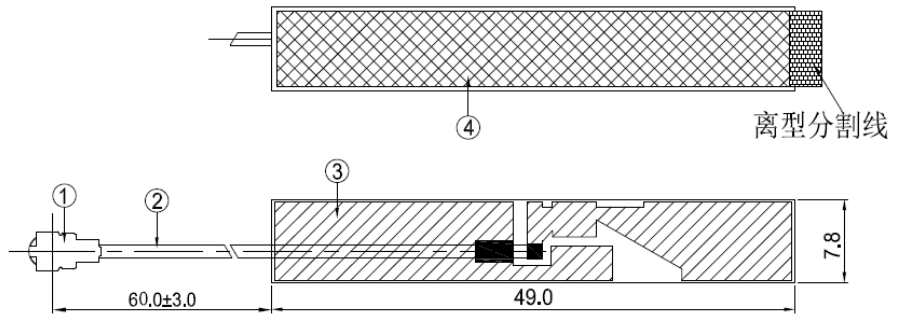
Tester : Tang Guohao

Approval : Chen Guoqiang

Date : 2022 / 9 / 2

1. Antenna Profile

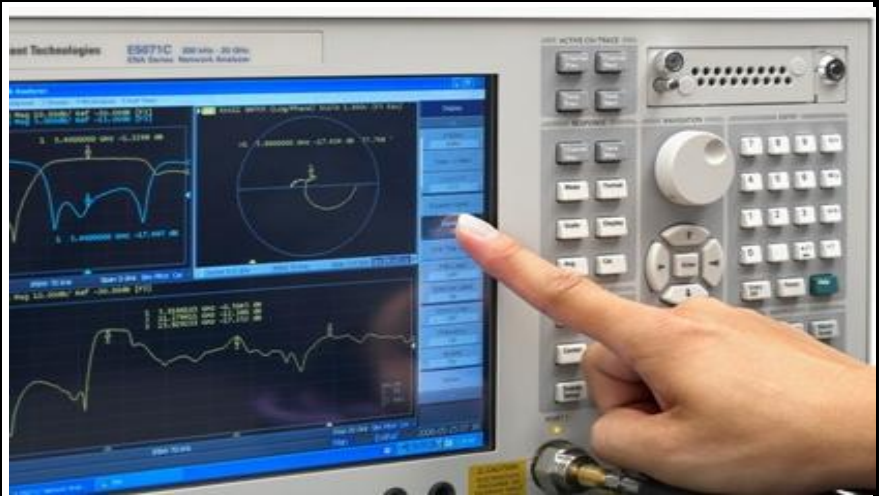
WiFi Antenna



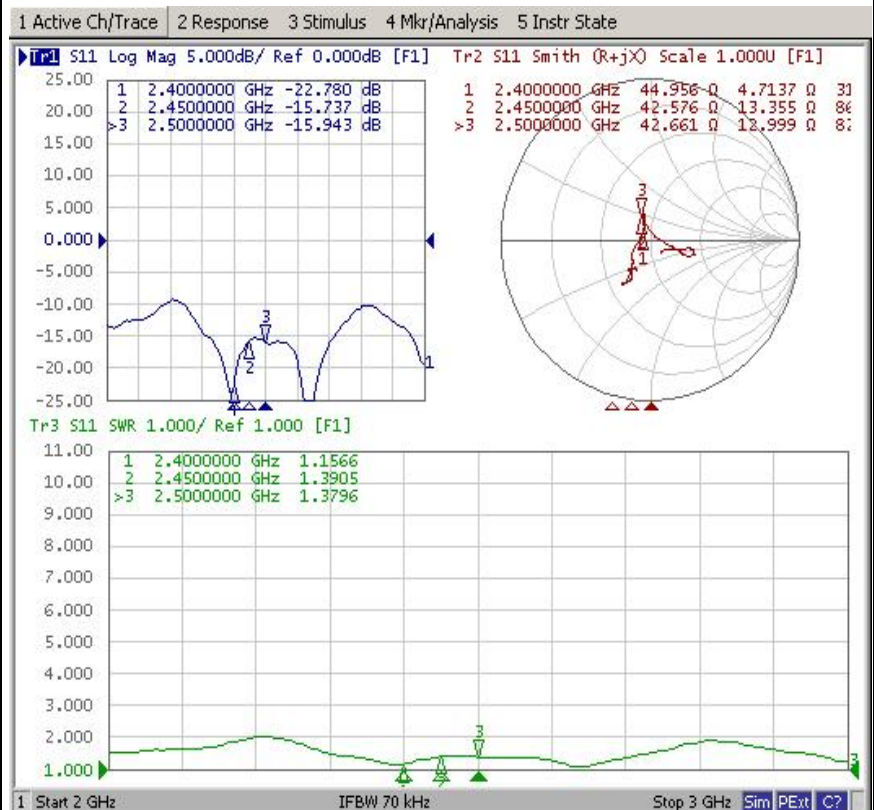
Unit: mm

2. Antenna Performance Test

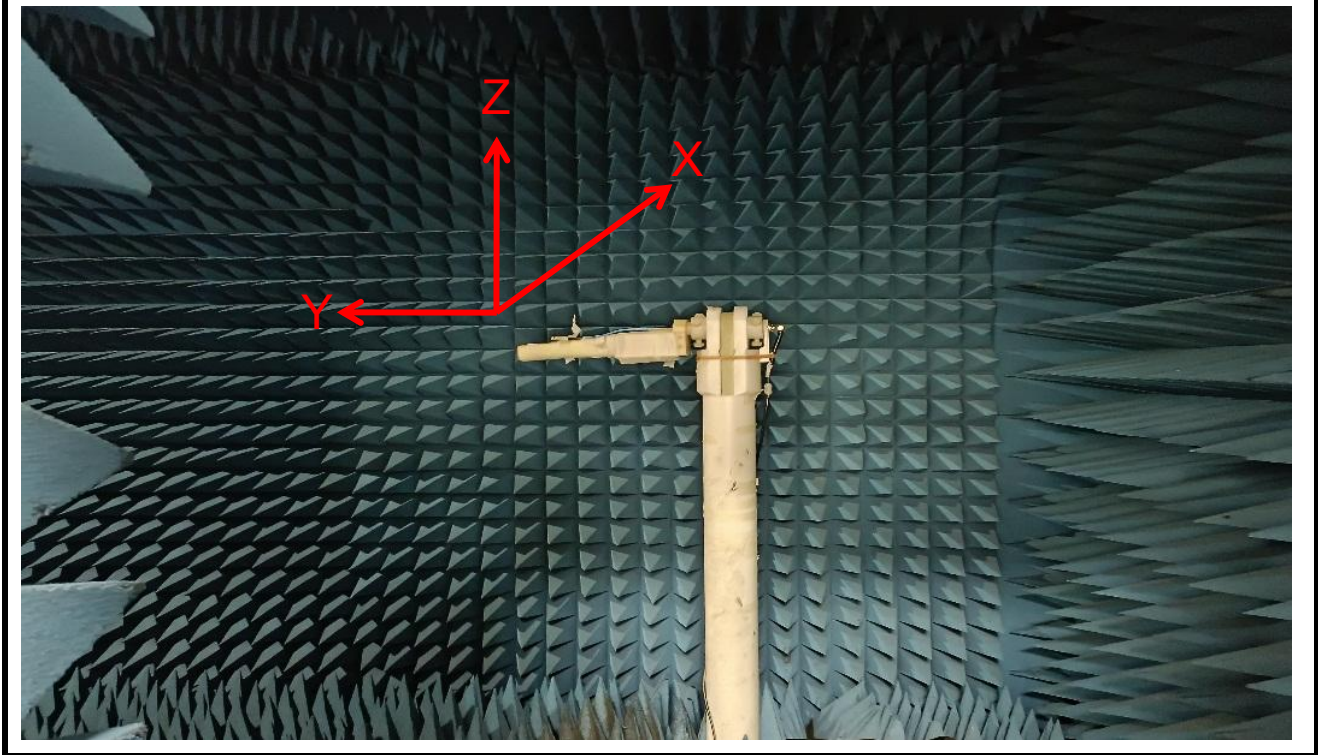
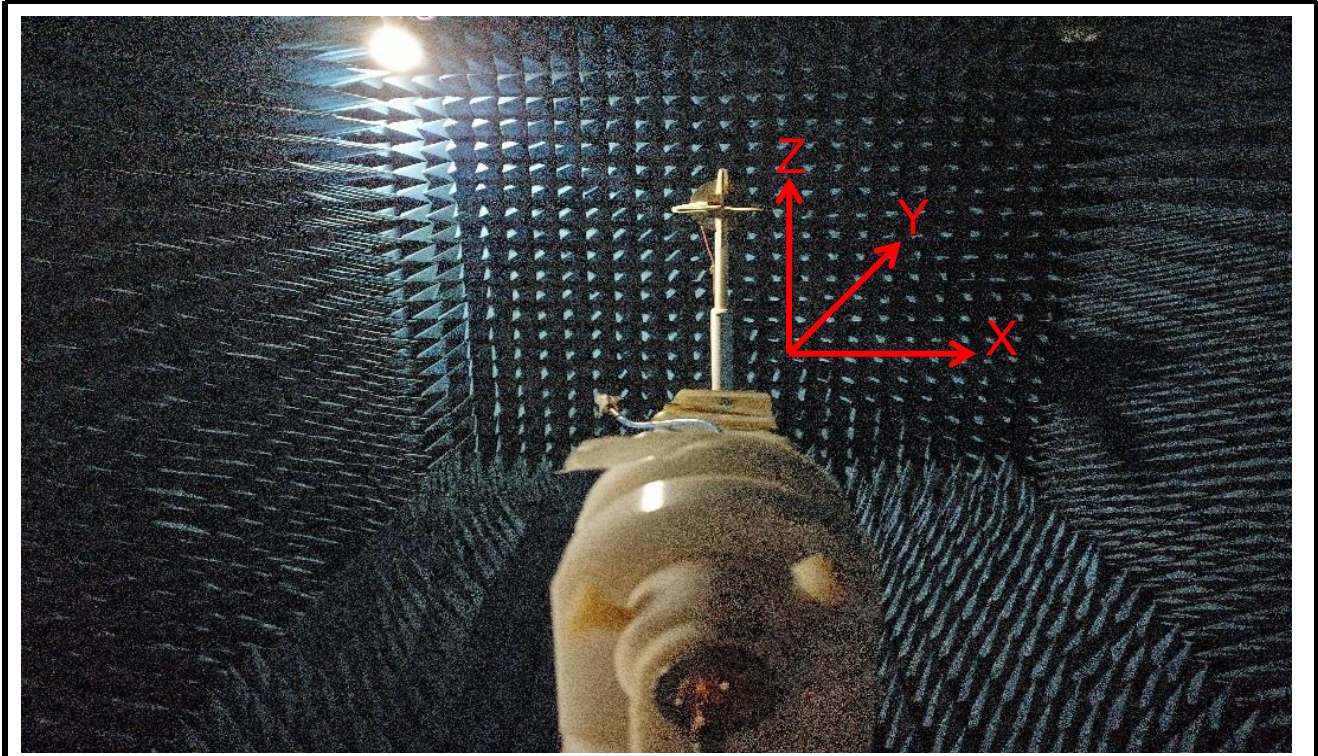
**Agilent
E5071B**



**S
Parameter
Test //
WiFi
Antenna**



3. Antenna Passive Test

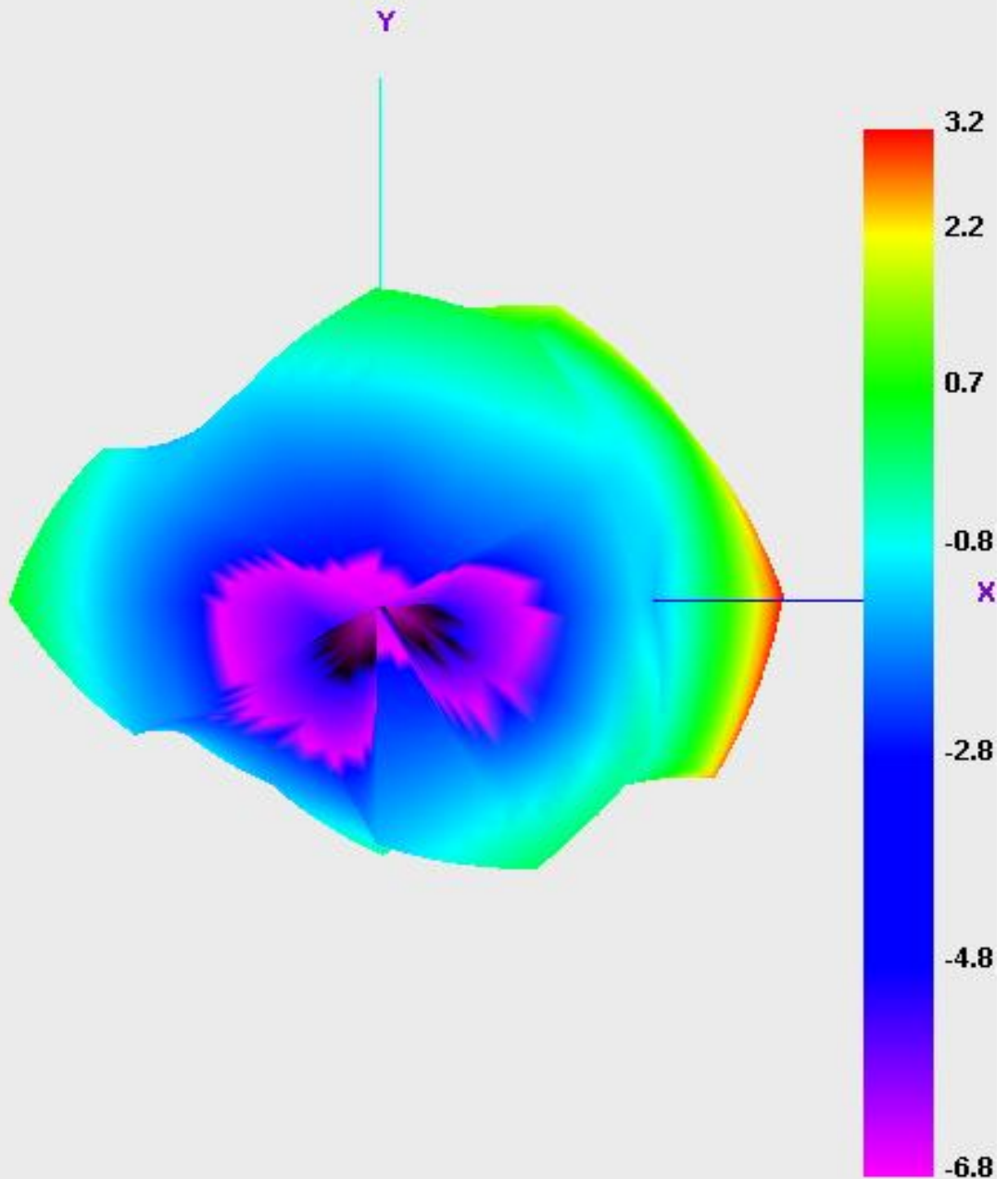


Passive Test For WiFi Antenna

Freq (MHz)	Effi (%)	Effi (dB)	Gain (dBi)
2400	52.0	-2.8	3.0
2410	50.7	-3.0	2.8
2420	49.0	-3.1	3.0
2430	46.6	-3.3	2.9
2440	44.7	-3.5	2.7
2450	46.8	-3.3	2.8
2460	47.2	-3.3	2.8
2470	49.3	-3.1	3.0
2480	48.9	-3.1	2.8
2490	49.8	-3.0	2.7
2500	53.0	-2.8	2.9

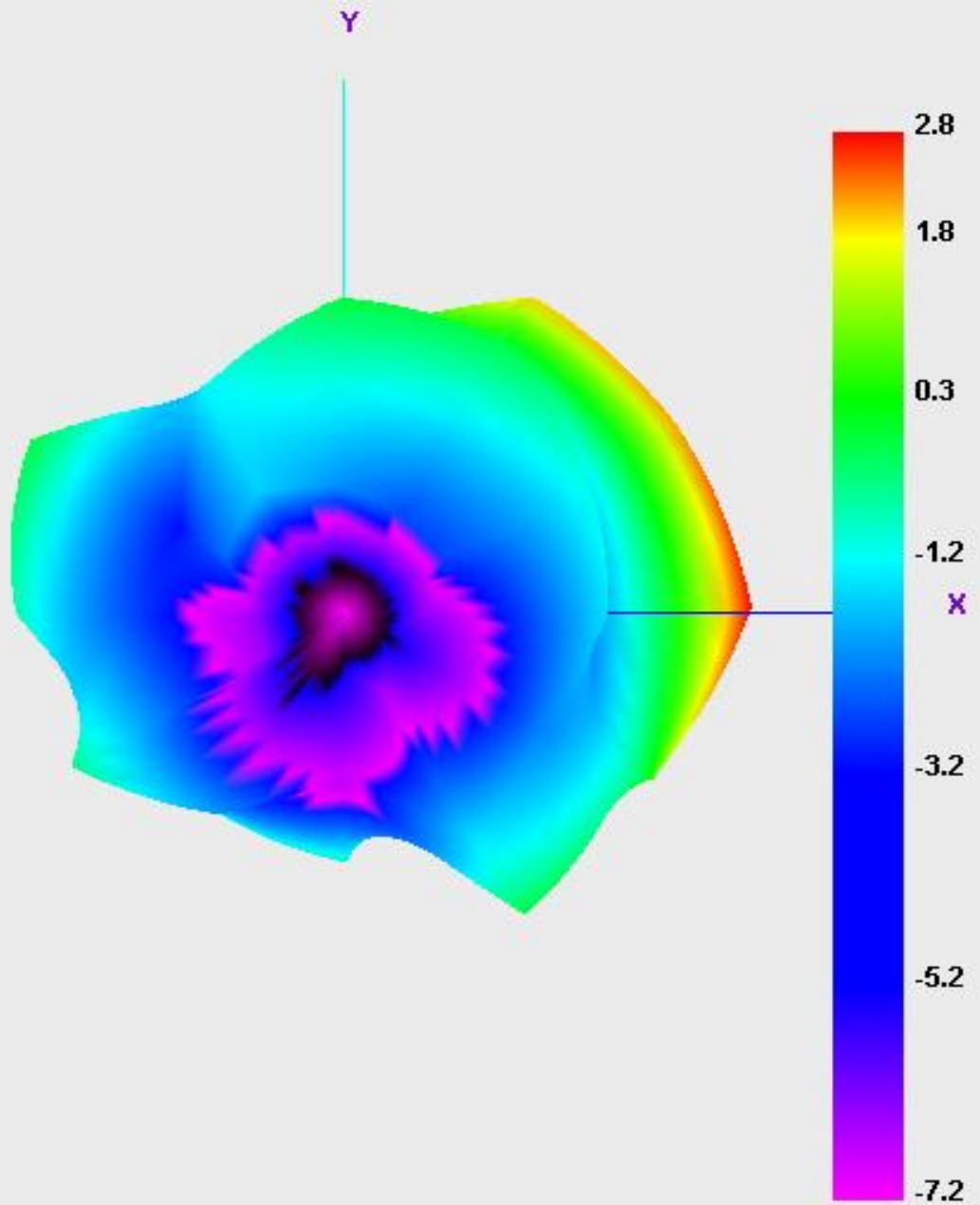
Radiation Pattern For WiFi Antenna

2400.000MHz



Radiation Pattern For WiFi Antenna

2450.000MHz



Radiation Pattern For WiFi Antenna

2500.000MHz

