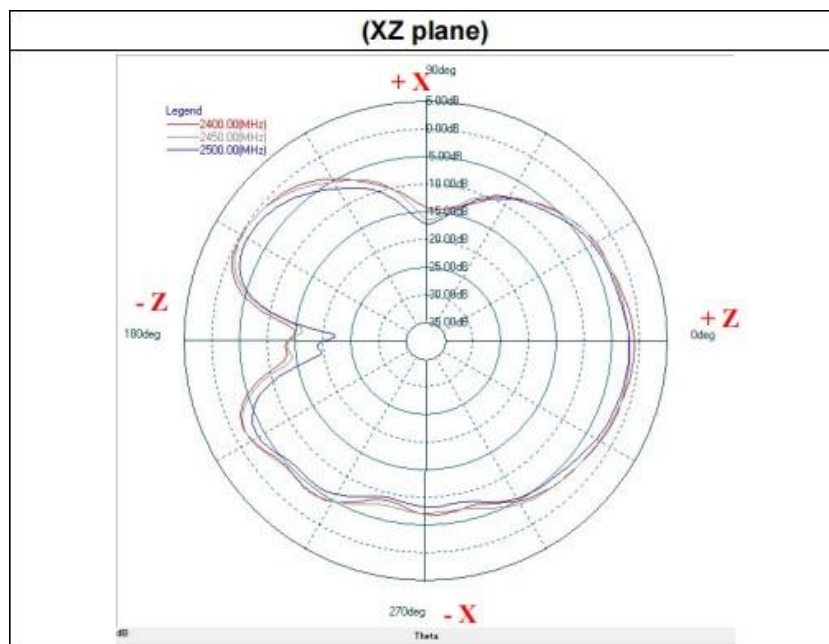
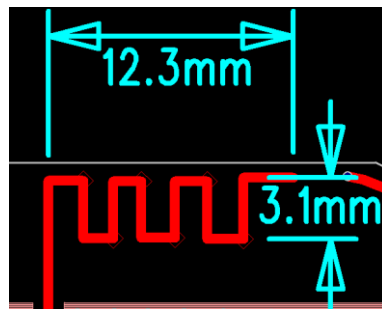
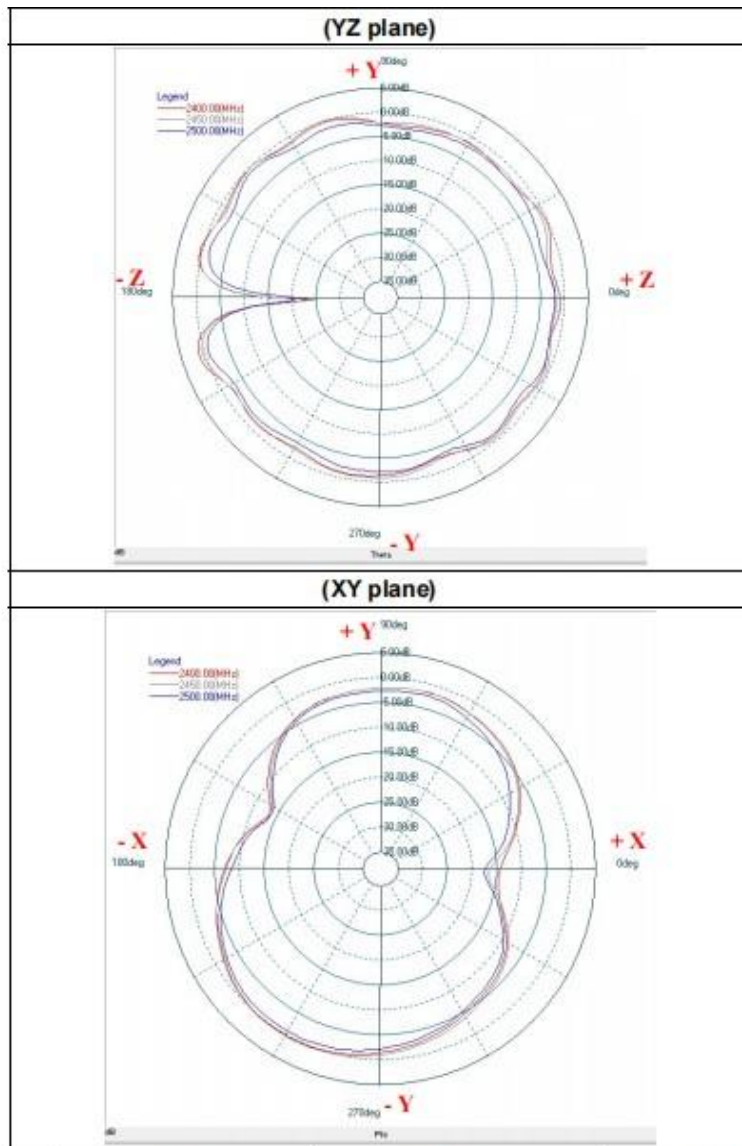


Antenna Specification

Specifications

	Specification
Working Frequency Range	2400 ~ 2500 MHz
Gain	1.0 dBi (Typical)
VSWR	2.0 max.
Polarization	Linear
Azimuth Beamwidth	Omni-directional
Impedance	50Ω
Rated Power (max.)	3 Watts
Maximum Input Power	5 Watts for 5 minutes
Operation Temperature	-40°C ~ +85°C





Frequency [MHz]	ZX plane		ZY plane		XY plane	
	Max Value [dB]	Average [dB]	Max Value [dB]	Average [dB]	Max Value [dB]	Average [dB]
2400	0.89	-4.72	0.97	-0.64	-0.03	-3.73
2450	-0.11	-4.90	1.00	-0.54	0.20	-3.54
2500	-0.72	-5.43	0.95	-1.00	0.09	-3.77